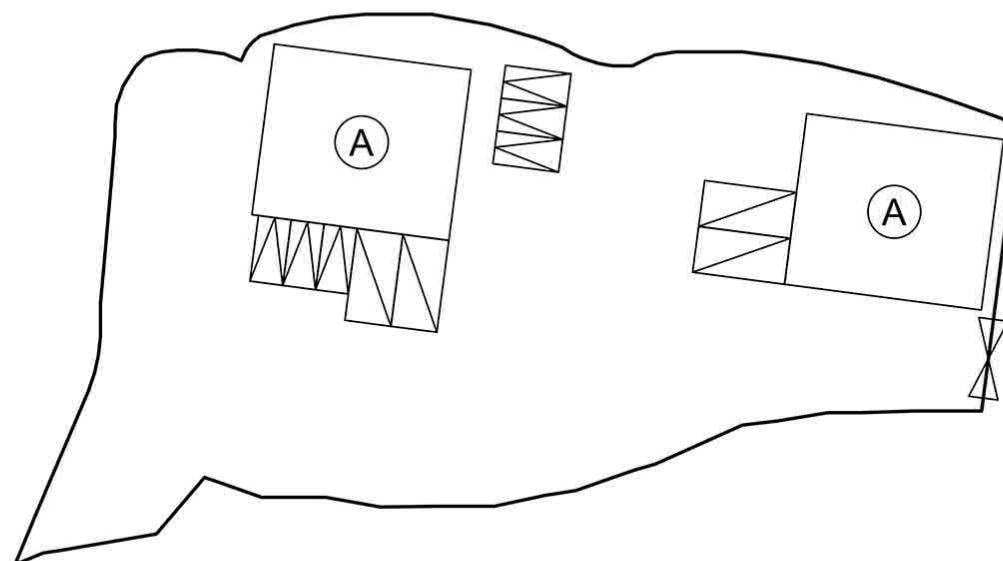


Proposed Structures Details

	Structures	Gross Floor Area (GFA)	Height (Not Exceeding)	No. of Storey	Unit(s)
A	Warehouse (Excluding D.G.G.) Ancillary Office	About 15m x 14m = 210 m ²	8m	1	2
	Total	420 m ²			
	Private Car Parking Space	5m x 2.5m			6
	LGV L/UL Space	7m x 3.5m			4



Scale: 1:500 @A4

Appendix 2

Proposed
Layout Plan

Location:
D.D. 107 Lot 1400 (Part) and 1401
(Part)

OZP: S/YL-KTN/10
District: Kam Tin North
Zoning: Agriculture

擬議臨時貨倉（危險品倉庫除外）連附屬
設施（為期3年）及填土工程

Proposed Temporary Warehouse
(excluding Dangerous Goods Godown)
for a Period of 3 Years and Filling of Land

Legend:

- Ingress / egress (About 6m)
- Proposed Structures
- Private Car Parking Space
- LGV L/UL Space

Drawing No.:
2-01

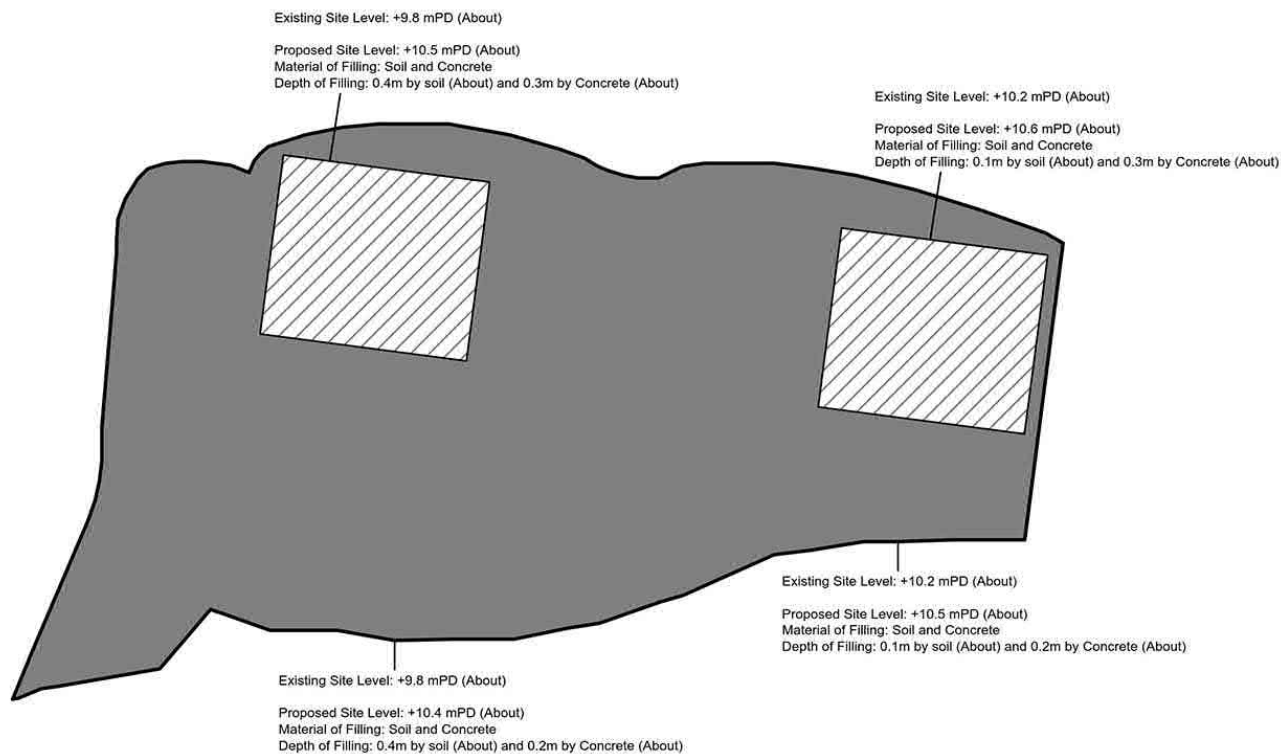
For Identification Only

Date: 15/11/2023

(摘錄自申請人於 7. 12. 2023 呈交的申請書)
(Extract from Applicant's
Submission of 7.12.2023)


參考編號
REFERENCE No.
A/YL-KTN/975

繪圖
DRAWING
A - 1



Paved Area: About 2,179.8 m²

Legend:

 Paved Area 平整範圍

Appendix 4

Location: DD 107 Lot 1400 (Part)
DD 107 Lot 1401 (Part)

OZP: S/YL-KTN/10
District: Kam Tin North
Zoning: Agriculture

Date: 28 November 2023

Paved Area

平整位置圖

擬議臨時貨倉（危險品倉庫除外）連附屬
設施（為期3年）及填土工程

Proposed Temporary Warehouse
(excluding Dangerous Goods Godown)
for a Period of 3 Years and Filling of Land

SCALE

1:500

@A4

For Identification Only

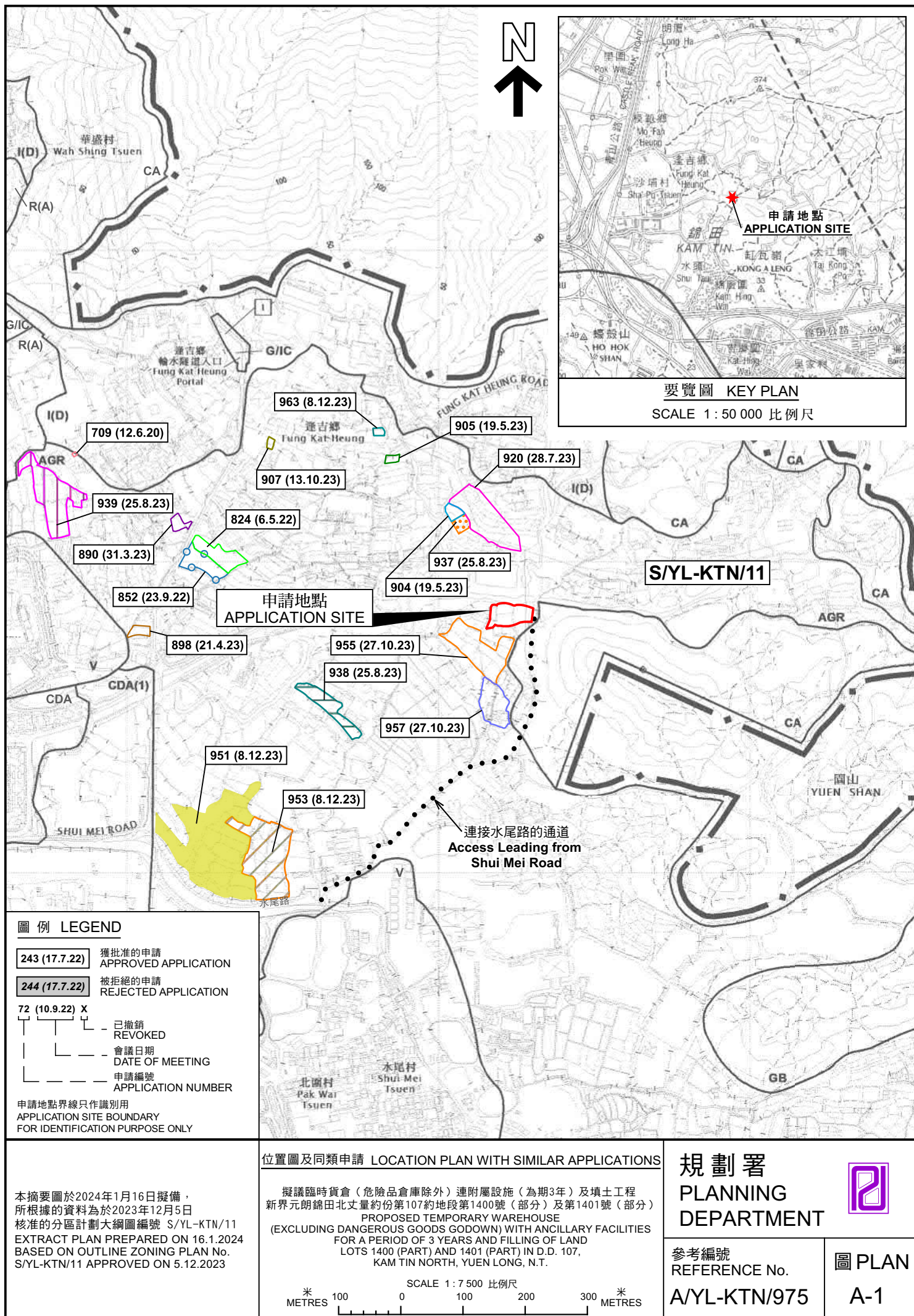
Drawing No.:

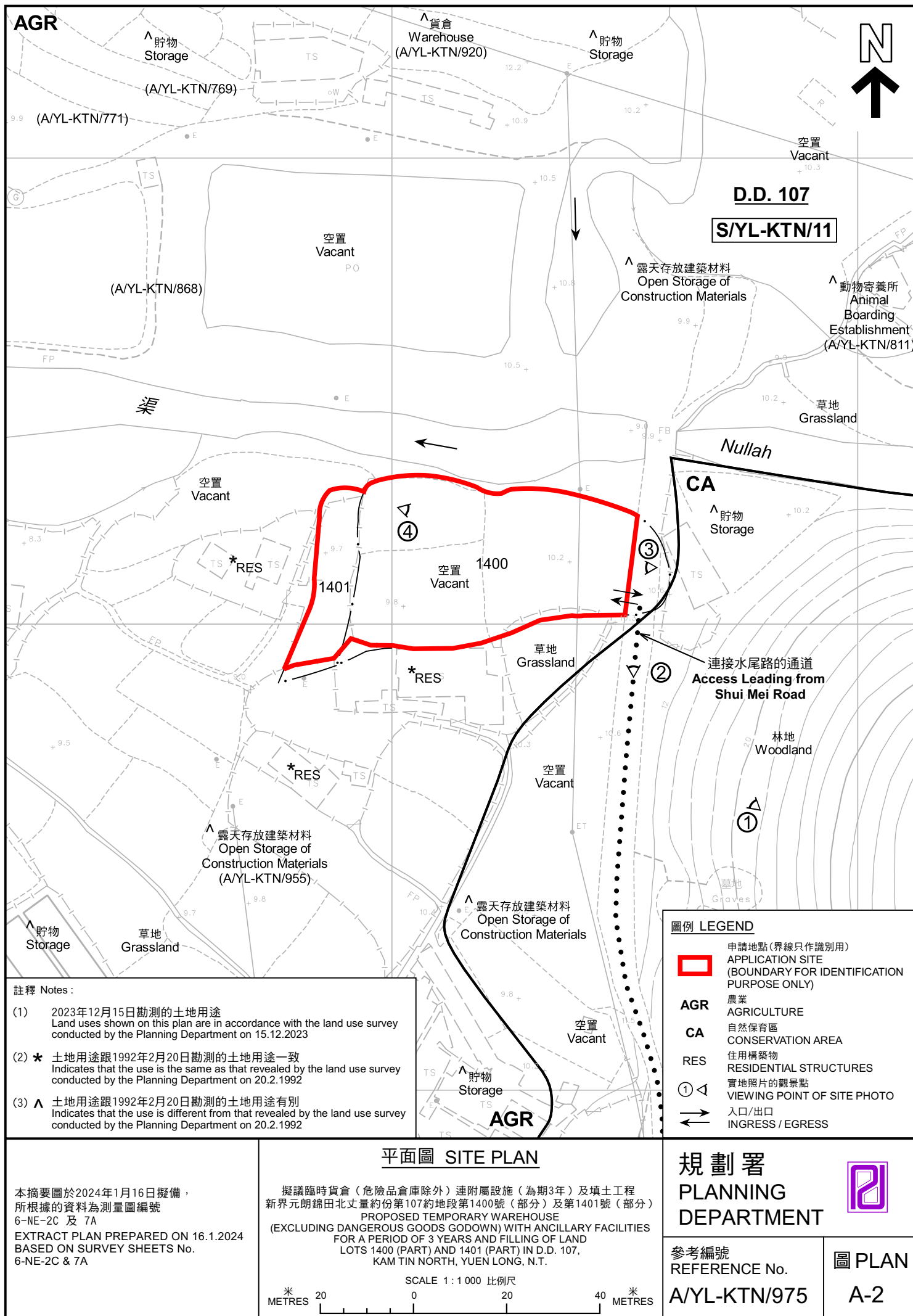
4-01

(摘錄自申請人於 7. 12. 2023 呈交的申請書)
(Extract from Applicant's
Submission of 7.12.2023)

參考編號
REFERENCE No.
A/YL-KTN/975

繪圖
DRAWING
A - 2







圖例 LEGEND



申請地點（界線只作識別用）
APPLICATION SITE (BOUNDARY FOR
IDENTIFICATION PURPOSE ONLY)

航攝照片 AERIAL PHOTO

本摘要圖於2024年1月16日擬備，
所根據的資料為地政總署於2022年12月18日
拍得的航攝照片編號 E174406C 及 E174407C
EXTRACT PLAN PREPARED ON 16.1.2024
BASED ON AERIAL PHOTOS No.
E174406C & E174407C TAKEN ON
18.12.2022 BY LANDS DEPARTMENT

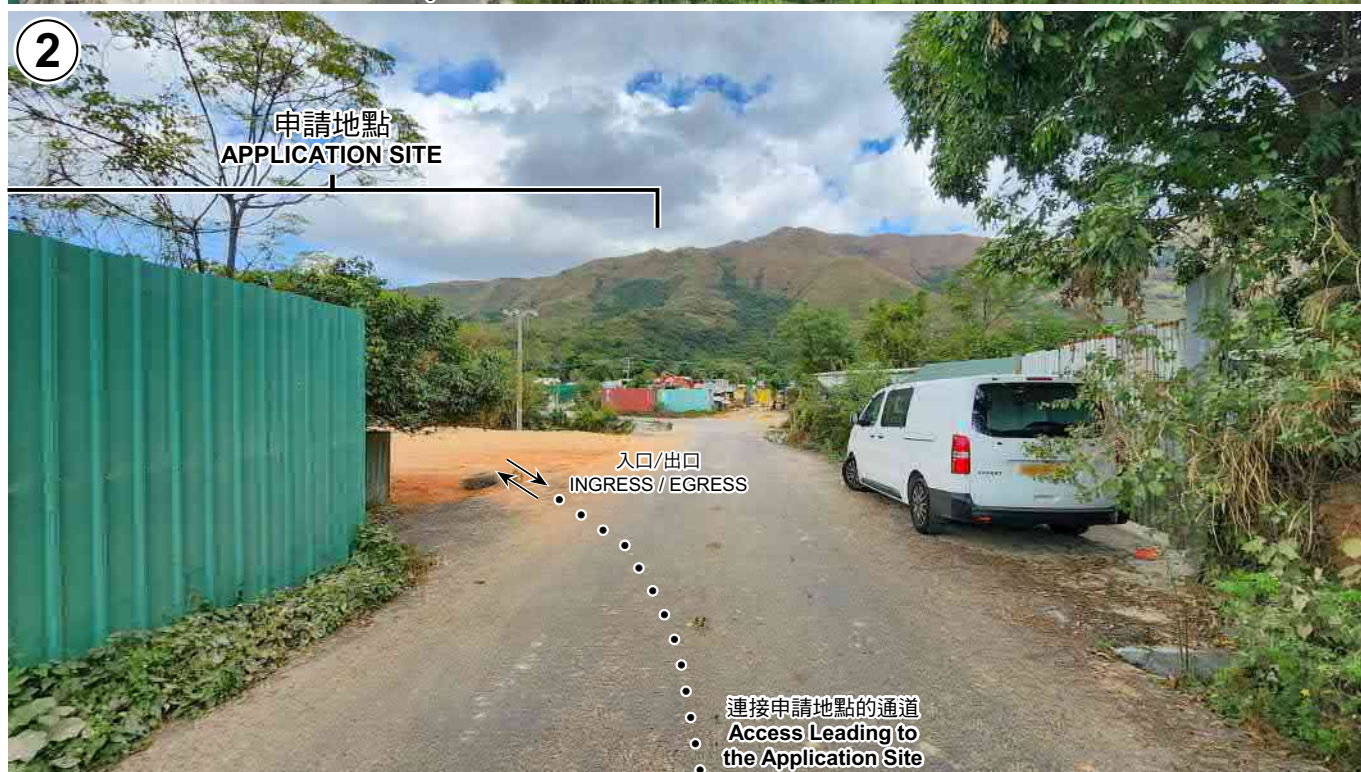
擬議臨時貨倉（危險品倉庫除外）連附屬設施（為期3年）及填土工程
新界元朗錦田北丈量約份第107約地段第1400號（部分）及第1401號（部分）
PROPOSED TEMPORARY WAREHOUSE
(EXCLUDING DANGEROUS GOODS GODOWN) WITH ANCILLARY FACILITIES
FOR A PERIOD OF 3 YEARS AND FILLING OF LAND
LOTS 1400 (PART) AND 1401 (PART) IN D.D. 107,
KAM TIN NORTH, YUEN LONG, N.T.

規劃署
PLANNING
DEPARTMENT



參考編號
REFERENCE No.
A/YL-KTN/975

圖 PLAN
A-3



申請地點界線只作識別用 APPLICATION SITE BOUNDARY FOR IDENTIFICATION PURPOSE ONLY

實地照片 SITE PHOTOS

本圖於2024年1月16日擬備，所根據的資料為攝於2023年12月15日的實地照片
PLAN PREPARED ON 16.1.2024
BASED ON SITE PHOTOS
TAKEN ON 15.12.2023

擬議臨時貨倉（危險品倉庫除外）連附屬設施（為期3年）及填土工程
新界元朗錦田北丈量約份第107約地段第1400號（部分）及第1401號（部分）
PROPOSED TEMPORARY WAREHOUSE
(EXCLUDING DANGEROUS GOODS GODOWN) WITH ANCILLARY FACILITIES
FOR A PERIOD OF 3 YEARS AND FILLING OF LAND
LOTS 1400 (PART) AND 1401 (PART) IN D.D. 107,
KAM TIN NORTH, YUEN LONG, N.T.

規劃署
PLANNING
DEPARTMENT



參考編號
REFERENCE No.
A/YL-KTN/975

圖 PLAN
A-4a



申請地點界線只作識別用 APPLICATION SITE BOUNDARY FOR IDENTIFICATION PURPOSE ONLY

<p>本圖於2024年1月16日擬備，所根據的資料為攝於2023年12月15日的實地照片 PLAN PREPARED ON 16.1.2024 BASED ON SITE PHOTOS TAKEN ON 15.12.2023</p>	<p>實地照片 SITE PHOTOS</p> <p>擬議臨時貨倉（危險品倉庫除外）連附屬設施（為期3年）及填土工程 新界元朗錦田北丈量約份第107約地段第1400號（部分）及第1401號（部分） PROPOSED TEMPORARY WAREHOUSE (EXCLUDING DANGEROUS GOODS GODOWN) WITH ANCILLARY FACILITIES FOR A PERIOD OF 3 YEARS AND FILLING OF LAND LOTS 1400 (PART) AND 1401 (PART) IN D.D. 107, KAM TIN NORTH, YUEN LONG, N.T.</p>	<p>規 劃 署 PLANNING DEPARTMENT</p> <p>參考編號 REFERENCE No. A/YL-KTN/975</p>	<p></p> <p>圖 PLAN A-4b</p>
----------------------------------------------------------------------------------------------------------------------------------	----------------------------------------------------------------------------------------------------------------------------------------------------------------------------------------------------------------------------------------------------------------------------------------------------------------------------------------------------------	------------------------------------------------------------------------------------------------	---------------------------------------------------------------------------------------------------------------------