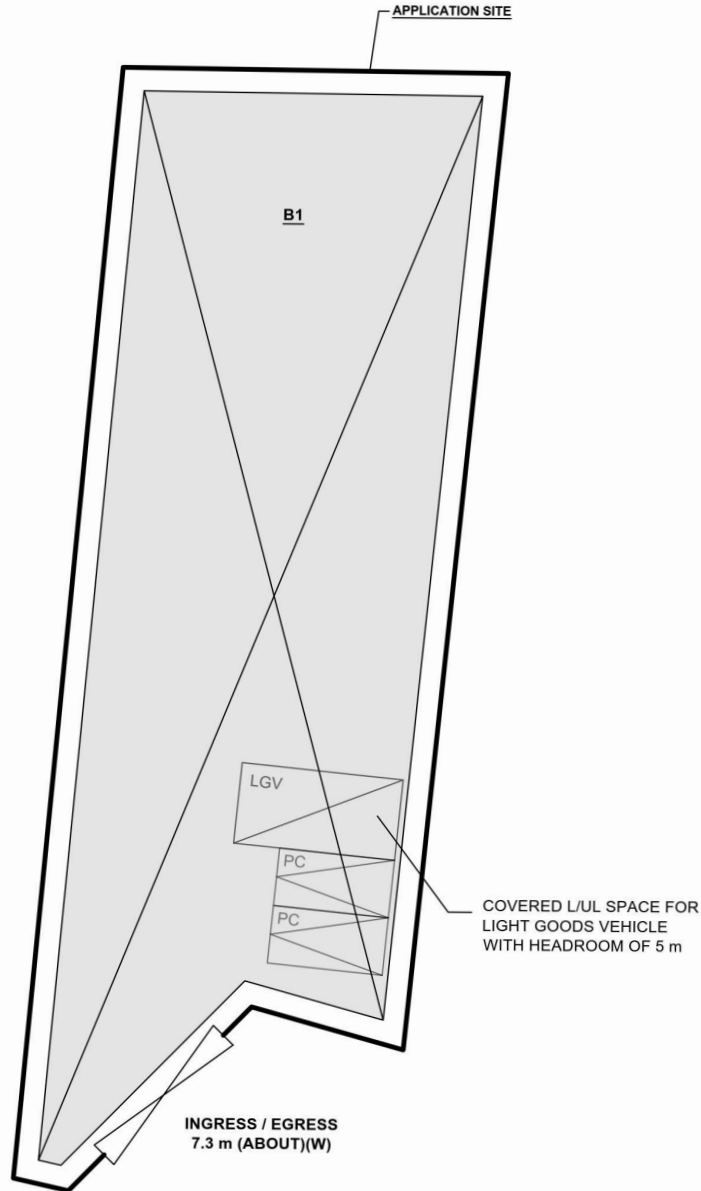


# DEVELOPMENT PARAMETERS

APPLICATION SITE AREA	: 722 m <sup>2</sup>	(ABOUT)
COVERED AREA	: 598 m <sup>2</sup>	(ABOUT)
UNCOVERED AREA	: 124 m <sup>2</sup>	(ABOUT)
PLOT RATIO	: 1.66	(ABOUT)
SITE COVERAGE	: 83 %	(ABOUT)
NO. OF STRUCTURE	: 1	
DOMESTIC GFA	: NOT APPLICABLE	
NON-DOMESTIC GFA	: 1,196 m <sup>2</sup>	(ABOUT)
TOTAL GFA	: 1,196 m <sup>2</sup>	(ABOUT)
BUILDING HEIGHT	: 13 m	(ABOUT)
NO. OF STOREY	: 2	

STRUCTURE	USE	COVERED AREA	GFA	BUILDING HEIGHT
B1 (G/F)	WAREHOUSE (EXCL. D.G.G.), OFFICE AND WASHROOM	598 m <sup>2</sup> (ABOUT)	598 m <sup>2</sup> (ABOUT)	13 m (ABOUT)(2-STOREY)
(1/F)	WAREHOUSE (EXCL. D.G.G.)		598 m <sup>2</sup> (ABOUT)	
TOTAL		598 m <sup>2</sup> (ABOUT)	1,196 m <sup>2</sup> (ABOUT)	



## PARKING AND LOADING/UNLOADING PROVISIONS

NO. OF PRIVATE CAR PARKING SPACE	: 2
DIMENSION OF PARKING SPACE	: 5 m (L) X 2.5 m (W)
NO. OF LOADING/UNLOADING SPACE FOR LIGHT GOODS VEHICLE	: 1
DIMENSION OF LOADING/UNLOADING SPACE	: 7 m (L) X 3.5 m (W)

## LEGEND

	APPLICATION SITE
	STRUCTURE
	PARKING SPACE (PC)
	L/UL SPACE (LGV)
	INGRESS/EGRESS

PLANNING CONSULTANT 	PROJECT PROPOSED TEMPORARY WAREHOUSE (EXCLUDING DANGEROUS GOODS GODOWN) WITH ANCILLARY FACILITIES FOR A PERIOD OF 3 YEARS AND ASSOCIATED FILLING OF LAND	ADDRESS LOTS 422 S.B ss.1 (PART) AND 422 S.B RP IN D.D. 110, KAM TIN, YUEN LONG, NEW TERRITORIES	SCALE <del>1:300 @ A1</del>	TITLE LAYOUT PLAN	NORTH 
			DRAWN BY MN	DATE 24.11.2023	
			REVISED BY	DATE	DWG NO. PLAN 4
					VER. 001

(摘錄自申請人於 2.1.2024 呈交的申請書)  
(Extract from Applicant's Submission of 2.1.2024)

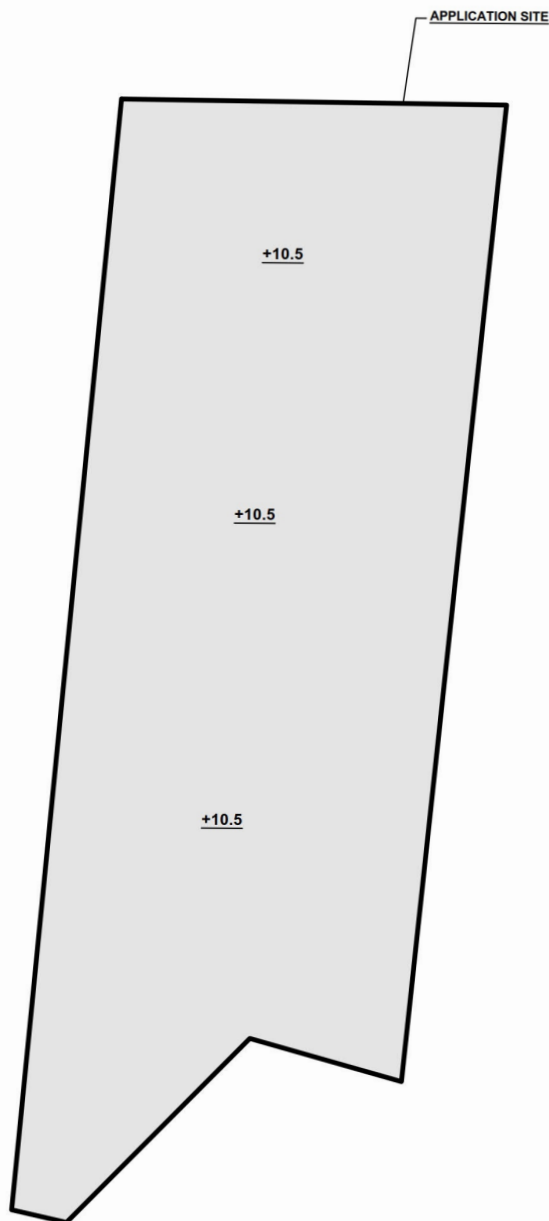
參考編號  
REFERENCE No.  
A/YL-KTN/978

繪圖  
DRAWING  
A - 1

# FILLING OF LAND AT THE APPLICATION SITE

APPLICATION SITE AREA	: 722 m <sup>2</sup>	(ABOUT)
EXISTING FILLED AREA	: 722 m <sup>2</sup>	(ABOUT)
EXISTING SITE LEVELS	: +10.5 mPD	(ABOUT)
DEPTH OF FILLING	: NOT MORE THAN 0.2 m	
PURPOSE OF FILLING	: SITE FORMATION AND CIRCULATION PURPOSE	

- THE APPLICATION SITE HAS BEEN PAVED WITH CONCRETE.
- THE EXISTING HARD-PAVING AT THE SITE WILL BE REMOVED AND A NEW LAYER OF CONCRETE WILL BE LAID AT THE SITE WITH SITE LEVEL OF +10.5 mPD.



## LEGEND

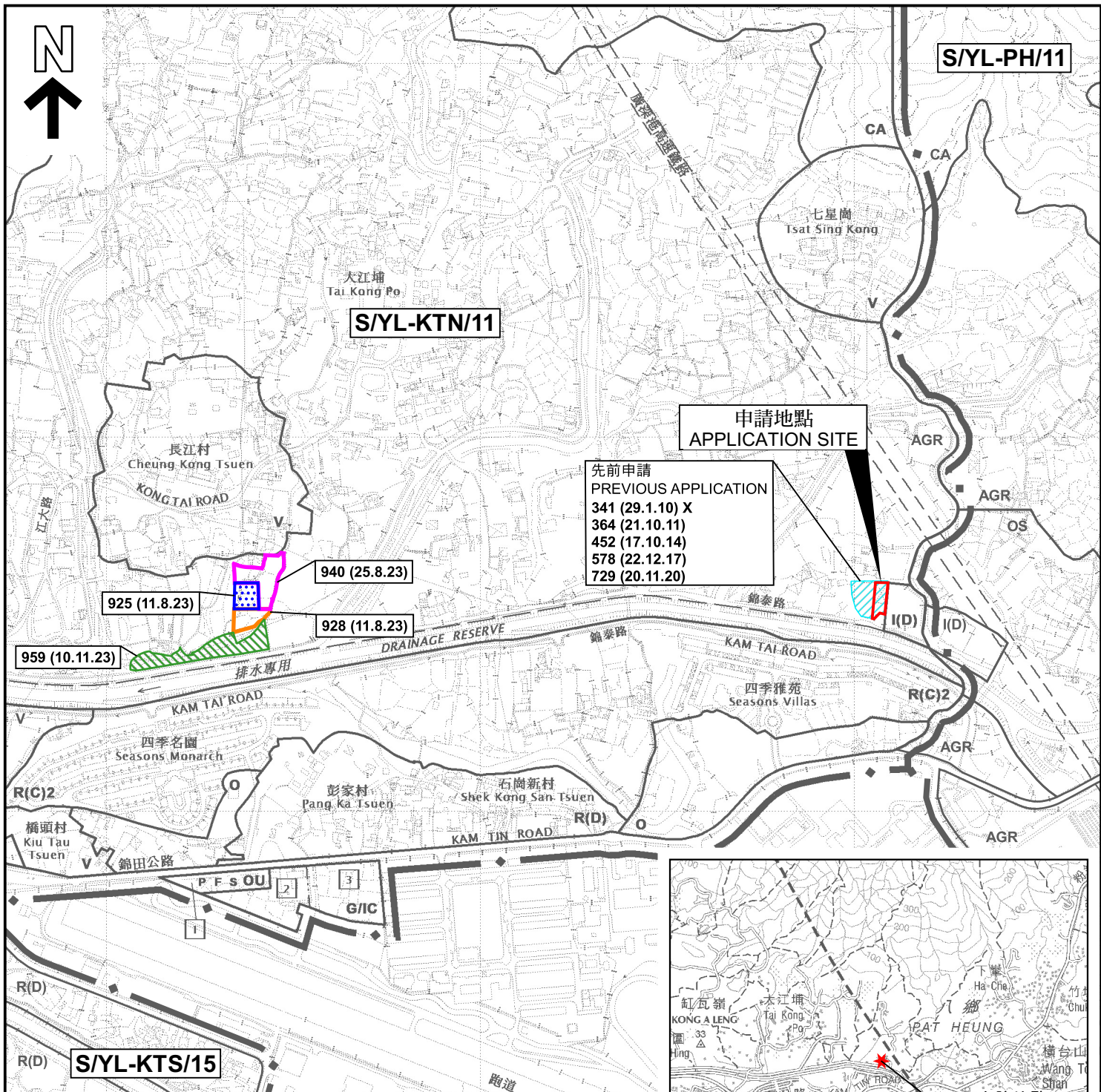
	APPLICATION SITE
	LAND FILLING AREA
<u>+3.4</u>	SITE LEVEL

	<b>PROJECT</b> PROPOSED TEMPORARY WAREHOUSE (EXCLUDING DANGEROUS GOODS GODOWN) WITH ANCILLARY FACILITIES FOR A PERIOD OF 3 YEARS AND ASSOCIATED FILLING OF LAND	<b>ADDRESS</b> LOTS 422 S.B ss.1 (PART) AND 422 S.B RP IN D.D. 110, KAM TIN, YUEN LONG, NEW TERRITORIES	<b>SCALE</b> 1:300 @ A1		<b>TITLE</b> FILLING OF LAND AREA		
			<b>DRAWN BY</b> MN	<b>DATE</b> 24.11.2023			
			<b>REVISED BY</b>	<b>DATE</b>	<b>DWG NO.</b> PLAN 5	<b>VER.</b> 001	

(摘錄自申請人於 2.1.2024 呈交的申請書)  
(Extract from Applicant's Submission of 2.1.2024)

參考編號  
REFERENCE No.  
A/YL-KTN/978

繪圖  
DRAWING  
A - 2



#### 圖例 LEGEND

- 243 (17.7.22)** 獲批准的申請  
APPROVED APPLICATION
- 244 (17.7.22)** 被拒絕的申請  
REJECTED APPLICATION
- 72 (10.9.22) X**  
已撤銷  
REVOKED
- 會議日期  
DATE OF MEETING
- 申請編號  
APPLICATION NUMBER

申請地點界線只作識別用  
APPLICATION SITE BOUNDARY  
FOR IDENTIFICATION PURPOSE ONLY



要覽圖 KEY PLAN  
SCALE 1: 50 000 比例尺

#### 位置圖及同類申請 LOCATION PLAN WITH SIMILAR APPLICATIONS

擬議臨時貨倉(危險品倉庫除外)連附屬設施  
(為期3年)及相關的填土工程  
新界元朗錦田丈量約份第110約地段  
第422號B分段第1小分段(部分)及第422號B分段餘段  
PROPOSED TEMPORARY WAREHOUSE  
(EXCLUDING DANGEROUS GOODS GODOWN) WITH ANCILLARY FACILITIES  
FOR A PERIOD OF 3 YEARS AND ASSOCIATED FILLING OF LAND  
LOTS 422 S.B ss.1 (PART) AND 422 S.B RP IN D.D. 110,  
KAM TIN, YUEN LONG, NEW TERRITORIES  
SCALE 1: 7 500 比例尺

米 100 0 100 200 300 米  
METRES

規劃署  
PLANNING  
DEPARTMENT

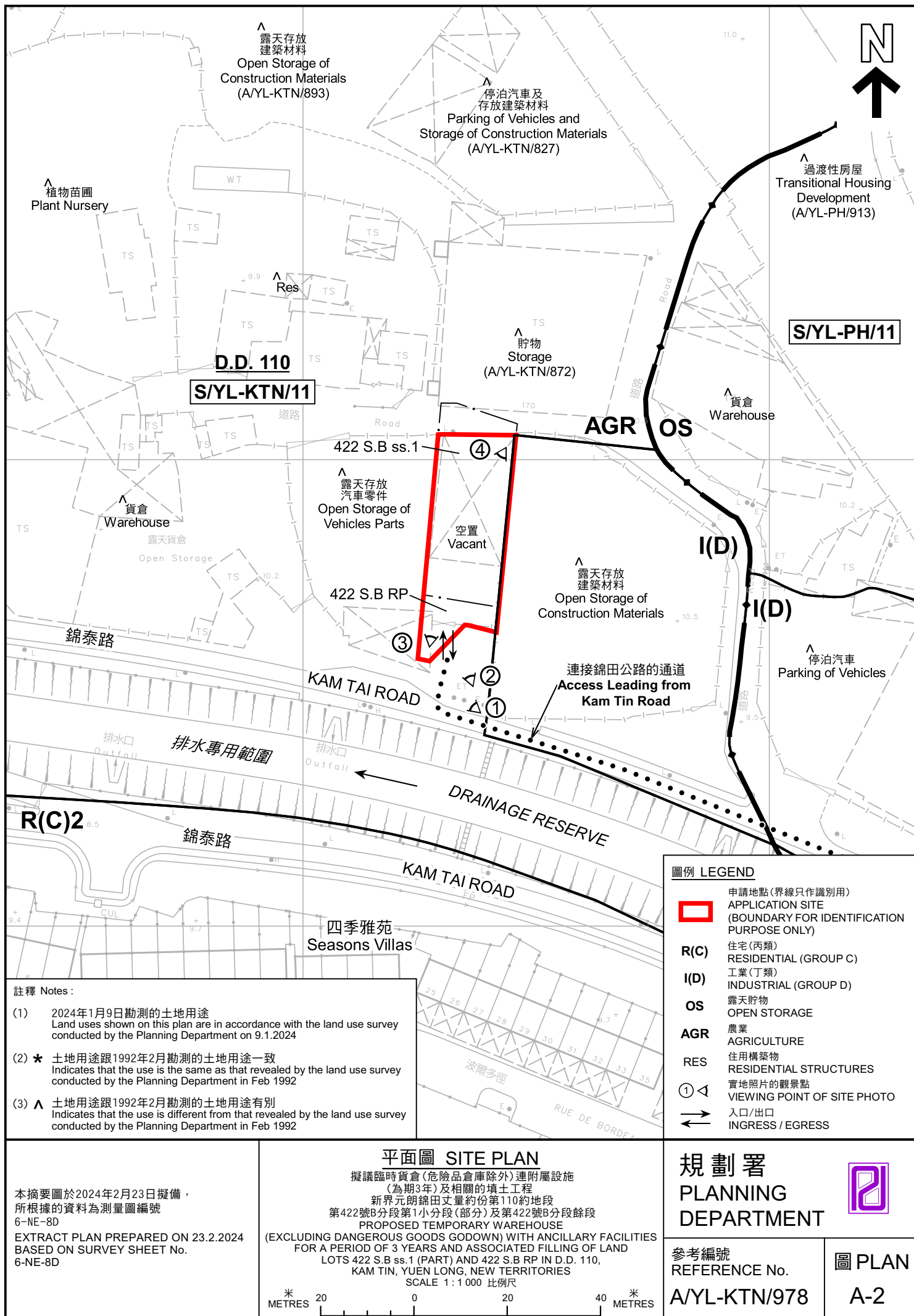


參考編號  
REFERENCE No.  
A/YL-KTN/978

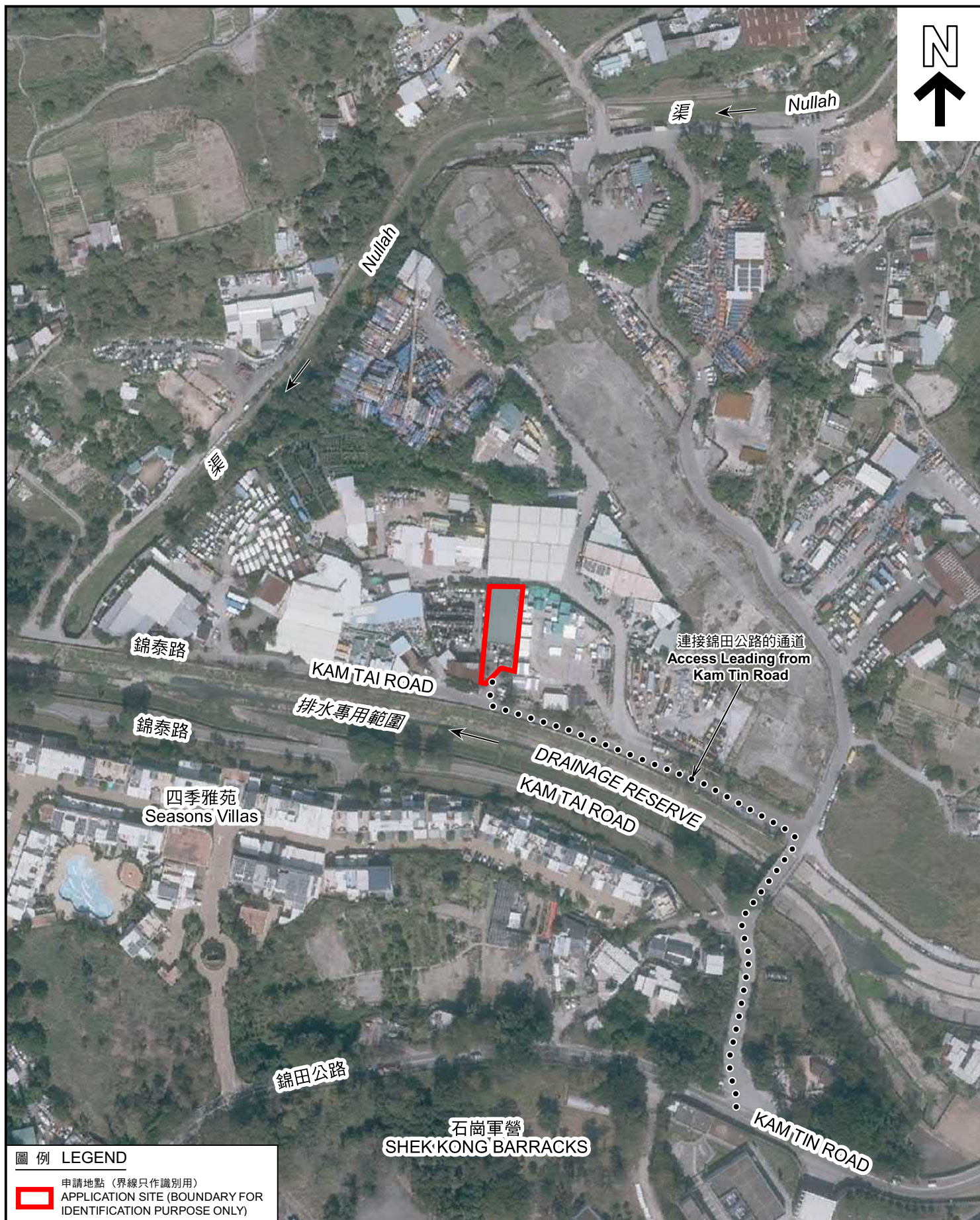
圖 PLAN  
A-1

本摘要圖於2024年2月19日擬備，  
所根據的資料為於2023年12月5日  
核准的分區計劃大綱圖編號 S/YL-KTN/11  
EXTRACT PLAN PREPARED ON 19.2.2024  
BASED ON OUTLINE ZONING PLAN No.  
S/YL-KTN/11 APPROVED ON 5.12.2023









圖例 LEGEND



申請地點 (界線只作識別用)  
APPLICATION SITE (BOUNDARY FOR  
IDENTIFICATION PURPOSE ONLY)

本摘要圖於2024年2月5日擬備，  
所根據的資料為地政總署於2022年2月14日  
拍得的航攝照片編號 E148841C  
EXTRACT PLAN PREPARED ON 5.2.2024  
BASED ON AERIAL PHOTO No.  
E148841C TAKEN ON  
14.2.2022 BY LANDS DEPARTMENT

航攝照片 AERIAL PHOTO

擬議臨時貨倉(危險品倉庫除外)連附屬設施  
(為期3年)及相關的填土工程  
新界元朗錦田丈量約份第110約地段  
第422號B分段第1小分段(部分)及第422號B分段餘段  
PROPOSED TEMPORARY WAREHOUSE  
(EXCLUDING DANGEROUS GOODS GODOWN) WITH ANCILLARY FACILITIES  
FOR A PERIOD OF 3 YEARS AND ASSOCIATED FILLING OF LAND  
LOTS 422 S.B ss.1 (PART) AND 422 S.B RP IN D.D. 110,  
KAM TIN, YUEN LONG, NEW TERRITORIES

規劃署  
PLANNING  
DEPARTMENT



參考編號  
REFERENCE No.  
A/YL-KTN/978

圖 PLAN  
A-3





申請地點界線只作識別用 APPLICATION SITE BOUNDARY FOR IDENTIFICATION PURPOSE ONLY

本圖於2024年2月5日擬備，所根據的資料為攝於2024年1月9日的實地照片  
PLAN PREPARED ON 5.2.2024  
BASED ON SITE PHOTOS  
TAKEN ON 9.1.2024

### 實地照片 SITE PHOTOS

擬議臨時貨倉(危險品倉庫除外)連附屬設施  
(為期3年)及相關的填土工程  
新界元朗錦田丈量約份第110約地段  
第422號B分段第1小分段(部分)及第422號B分段餘段  
PROPOSED TEMPORARY WAREHOUSE  
(EXCLUDING DANGEROUS GOODS GODOWN) WITH ANCILLARY FACILITIES  
FOR A PERIOD OF 3 YEARS AND ASSOCIATED FILLING OF LAND  
LOTS 422 S.B ss.1 (PART) AND 422 S.B RP IN D.D. 110,  
KAM TIN, YUEN LONG, NEW TERRITORIES

規劃署  
PLANNING  
DEPARTMENT



參考編號  
REFERENCE No.  
A/YL-KTN/978

圖 PLAN  
A-4