

### Proposed Structures Detail

Warehouse (Excluding D.G.G.) with Ancillary Office)

Non-Domestic GFA: About 210 m<sup>2</sup>

Height: Not Exceeding 8m

Storey: 1



### Private Car Parking Space

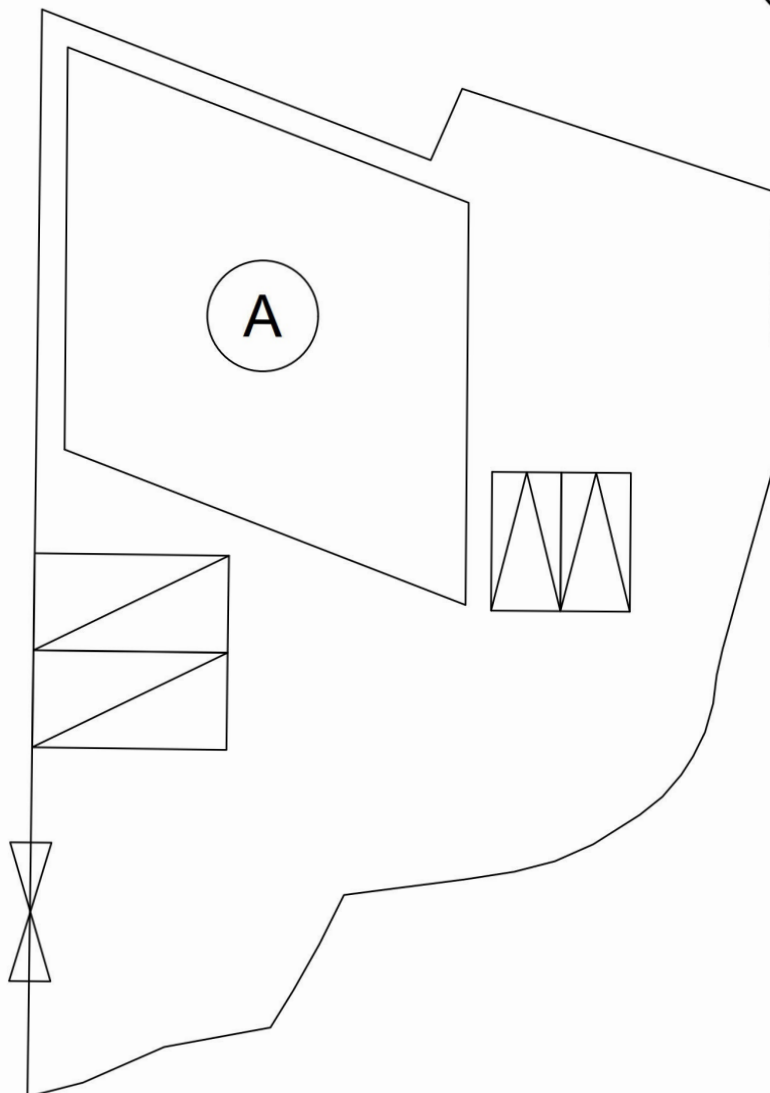
Dimension: 2.5 m x 5 m

Unit(s): 2

### Light-Goods Vehicle L/UL Space

Dimension: 3.5 m x 7 m

Unit(s): 2



### Legend:

⋈ Ingress/egress (Width: About 6m)

▣ Proposed Structures

▤ Private Car Parking Space

▥ LGV L/UL Space

Total Area: 764.7 m<sup>2</sup> (About)

Covered Area: 210 m<sup>2</sup> (About)

Uncovered Area: 554.7 m<sup>2</sup> (About)

Non-Domestic GFA: 210 m<sup>2</sup> (About)

Nos. of Proposed Structures: 1

### Appendix 2

Location: DD 107 Lot 1244 (Part)  
DD 107 Lot 1245 (Part)  
DD 107 Lot 1246 (Part)  
DD 107 Lot 1247 (Part)

OZP: S/YL-KTN/11  
District: Kam Tin North  
Zoning: Agriculture

### Proposed Layout Plan

擬議佈局平面圖

擬議臨時貨倉（危險品倉庫除外）  
連附屬設施（為期3年）及填土工程

Proposed Temporary Warehouse (excluding  
Dangerous Goods Godown) with Ancillary  
Facilities  
for a Period of 3 Years and Filling of Land

### SCALE

~~1:250~~

@A4

For Identification Only

Drawing No.:

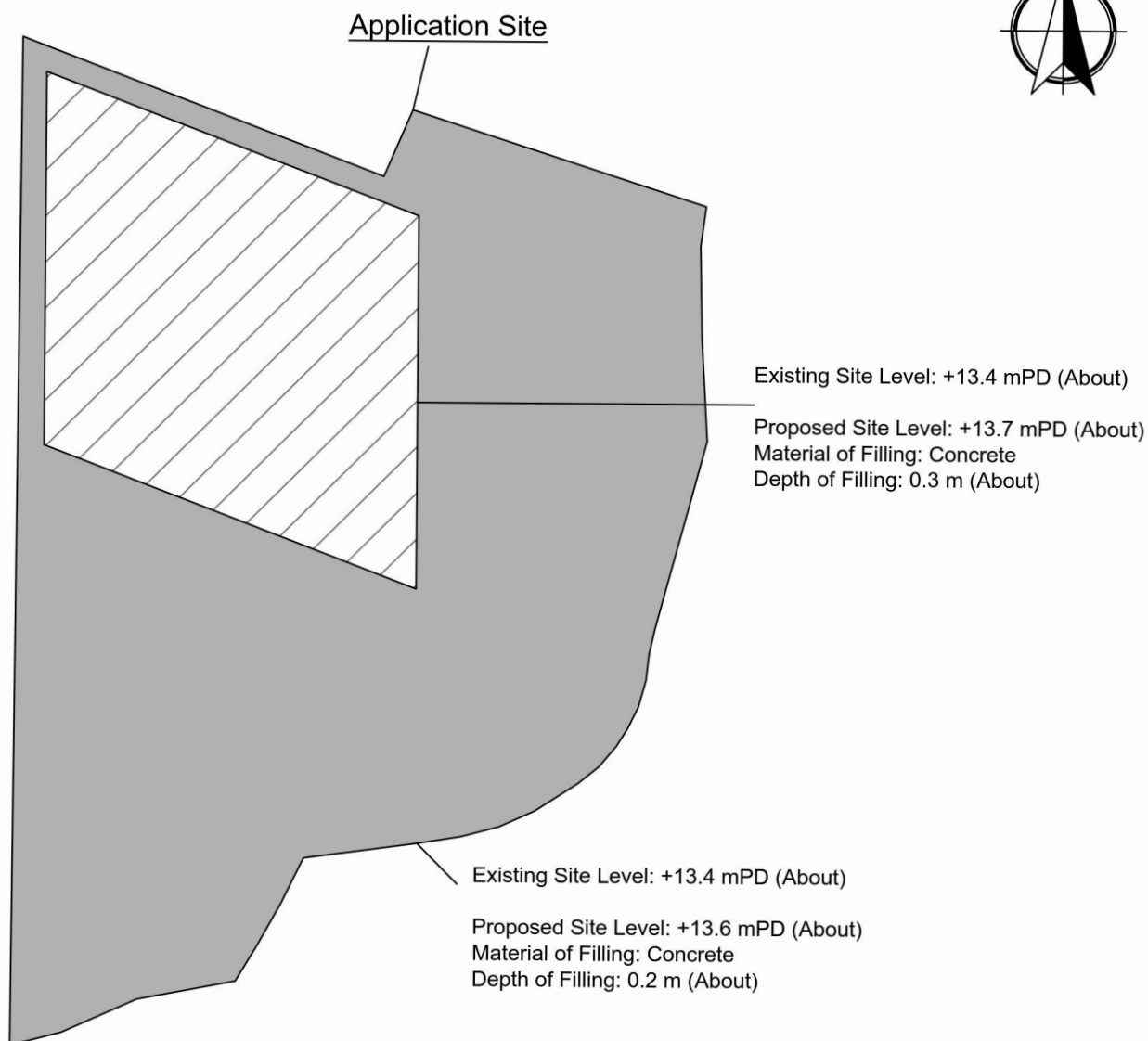
Date: 24 January 2024

2-01

(摘錄自申請人於 6. 2. 2024 呈交的申請書)  
(Extract from Applicant's  
Submission of 6.2.2024)


參考編號  
REFERENCE No.  
A/YL-KTN/992

繪圖  
DRAWING  
A - 1



Paved Area: About 764.7 m<sup>2</sup>

Legend:

 Paved Area 平整範圍

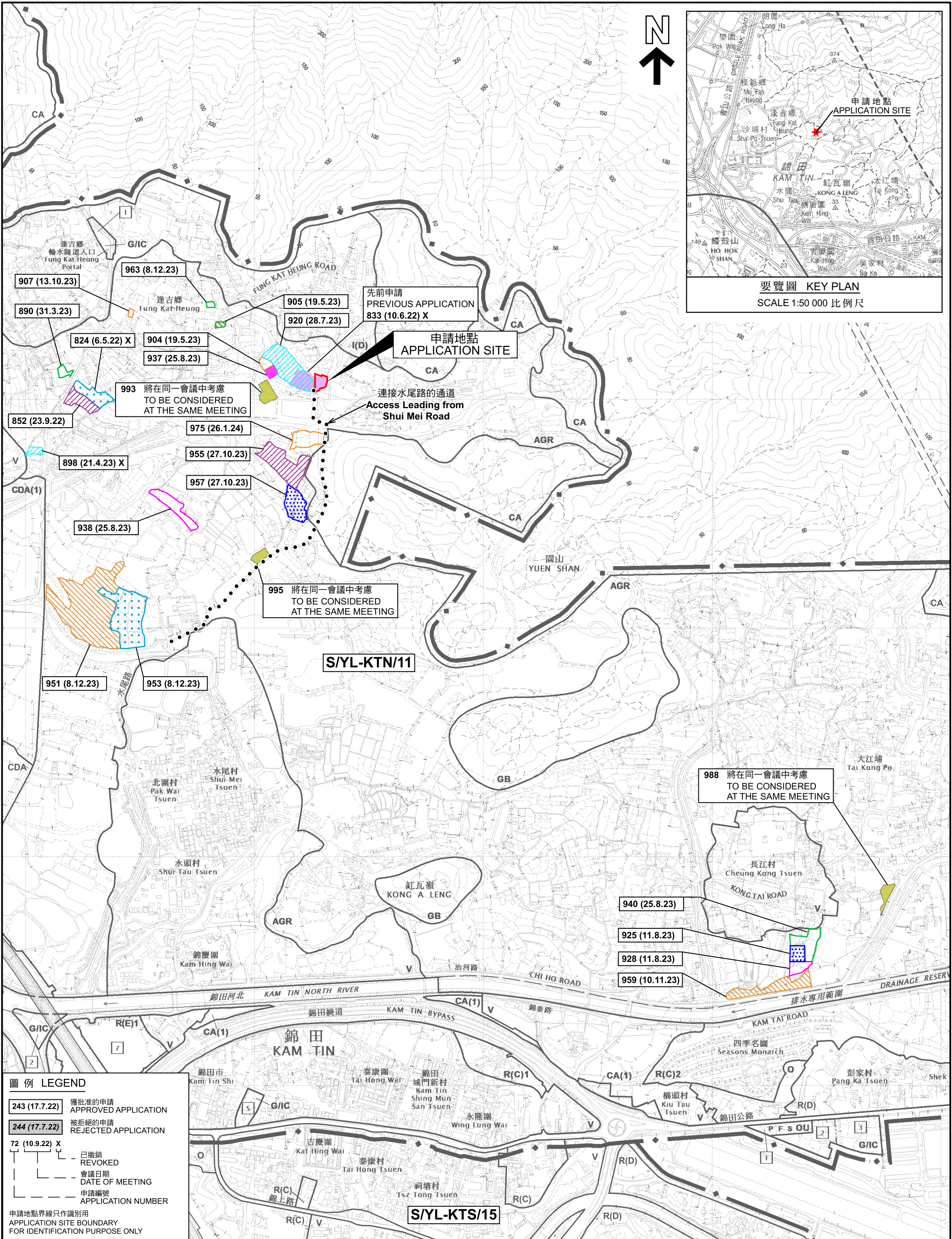
<p><u>Appendix 4</u> Location: DD 107 Lot 1244 (Part) DD 107 Lot 1245 (Part) DD 107 Lot 1246 (Part) DD 107 Lot 1247 (Part)</p> <p>OZP: S/YL-KTN/11 District: Kam Tin North Zoning: Agriculture</p>	<p><u>Paved Area</u> 平整位置圖</p> <p>擬議臨時貨倉（危險品倉庫除外） 連附屬設施（為期3年）及填土工程</p> <p>Proposed Temporary Warehouse (excluding Dangerous Goods Godown) with Ancillary Facilities for a Period of 3 Years and Filling of Land</p>	<p><u>SCALE</u></p> <p><del>1:250</del></p> <p>@A4</p>	
		For Identification Only	Drawing No.:
		Date: 24 January 2024	4-01

(摘錄自申請人於 6. 2. 2024 呈交的申請書)  
(Extract from Applicant's  
Submission of 6.2.2024)

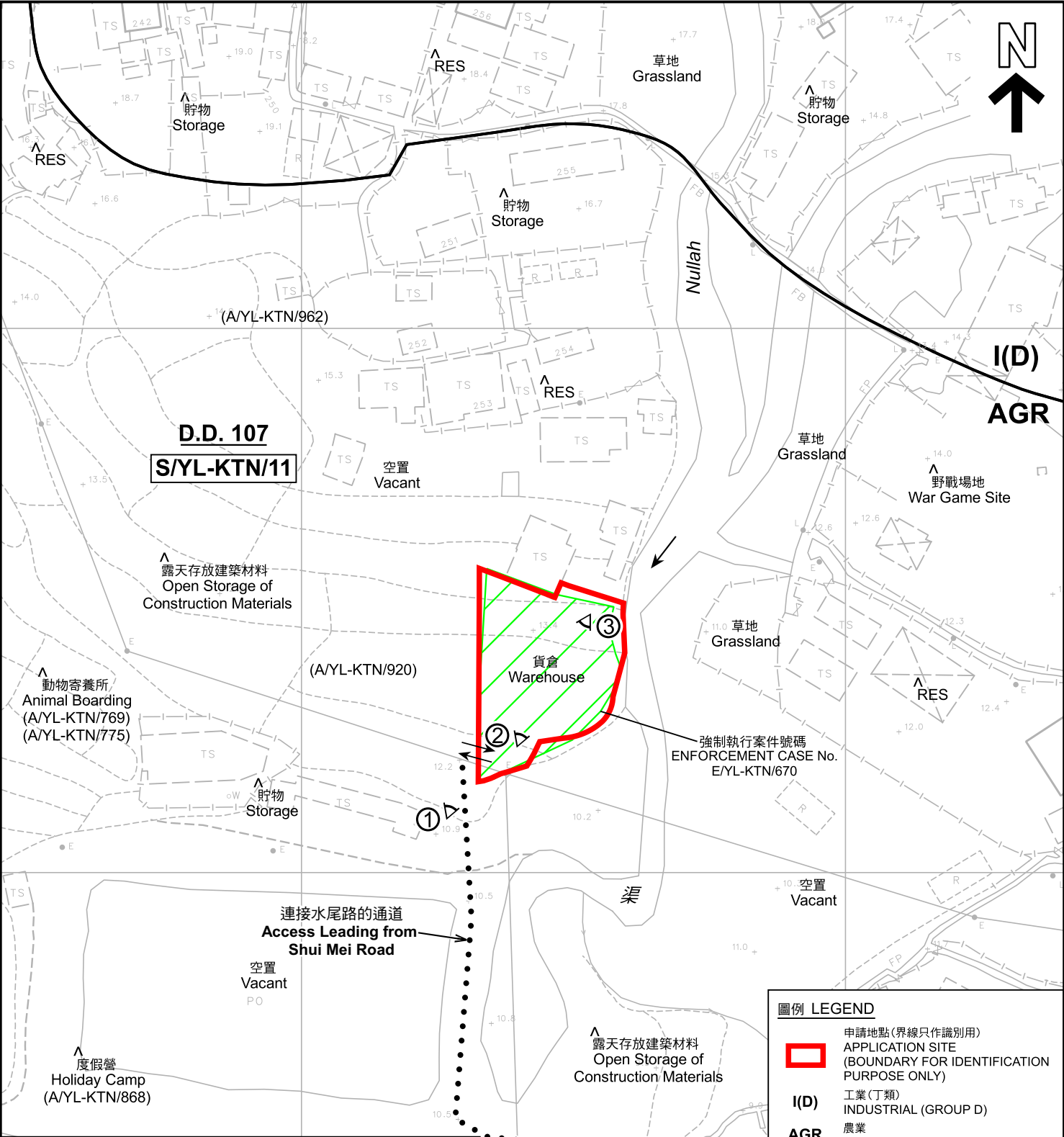
參考編號  
REFERENCE No.  
A/YL-KTN/992

繪圖  
DRAWING  
A - 2









註釋 Notes :

(1) 2024年2月23日勘測的土地用途  
Land uses shown on this plan are in accordance with the land use survey conducted by the Planning Department on 23.2.2024

(2) \* 土地用途跟1992年2月勘測的土地用途一致  
Indicates that the use is the same as that revealed by the land use survey conducted by the Planning Department in Feb 1992

(3) ^ 土地用途跟1992年2月勘測的土地用途有別  
Indicates that the use is different from that revealed by the land use survey conducted by the Planning Department in Feb 1992

圖例 LEGEND

申請地點(界線只作識別用)  
APPLICATION SITE  
(BOUNDARY FOR IDENTIFICATION PURPOSE ONLY)

**I(D)** 工業(丁類)  
INDUSTRIAL (GROUP D)

**AGR** 農業  
AGRICULTURE

**CA** 自然保育區  
CONSERVATION AREA

**A/C** 常耕農地  
CULTIVATED AGRICULTURAL LAND

**RES** 住用構築物  
RESIDENTIAL STRUCTURES

① ◁ 實地照片的觀景點  
VIEWING POINT OF SITE PHOTO

↔ 入口/出口  
INGRESS / EGRESS

平面圖 SITE PLAN

擬議臨時貨倉(危險品倉庫除外)連附屬設施(為期3年)及填土工程  
新界元朗錦田丈量約份第107約地段第1244號(部分)、  
第1245號(部分)、第1246號(部分)及第1247號(部分)  
PROPOSED TEMPORARY WAREHOUSE  
(EXCLUDING DANGEROUS GOODS GODOWN) WITH ANCILLARY FACILITIES  
FOR A PERIOD OF 3 YEARS AND FILLING OF LAND  
LOTS 1244 (PART), 1245 (PART), 1246 (PART) AND 1247 (PART)  
IN D.D. 107, KAM TIN, YUEN LONG, NEW TERRITORIES

SCALE 1 : 1 000 比例尺

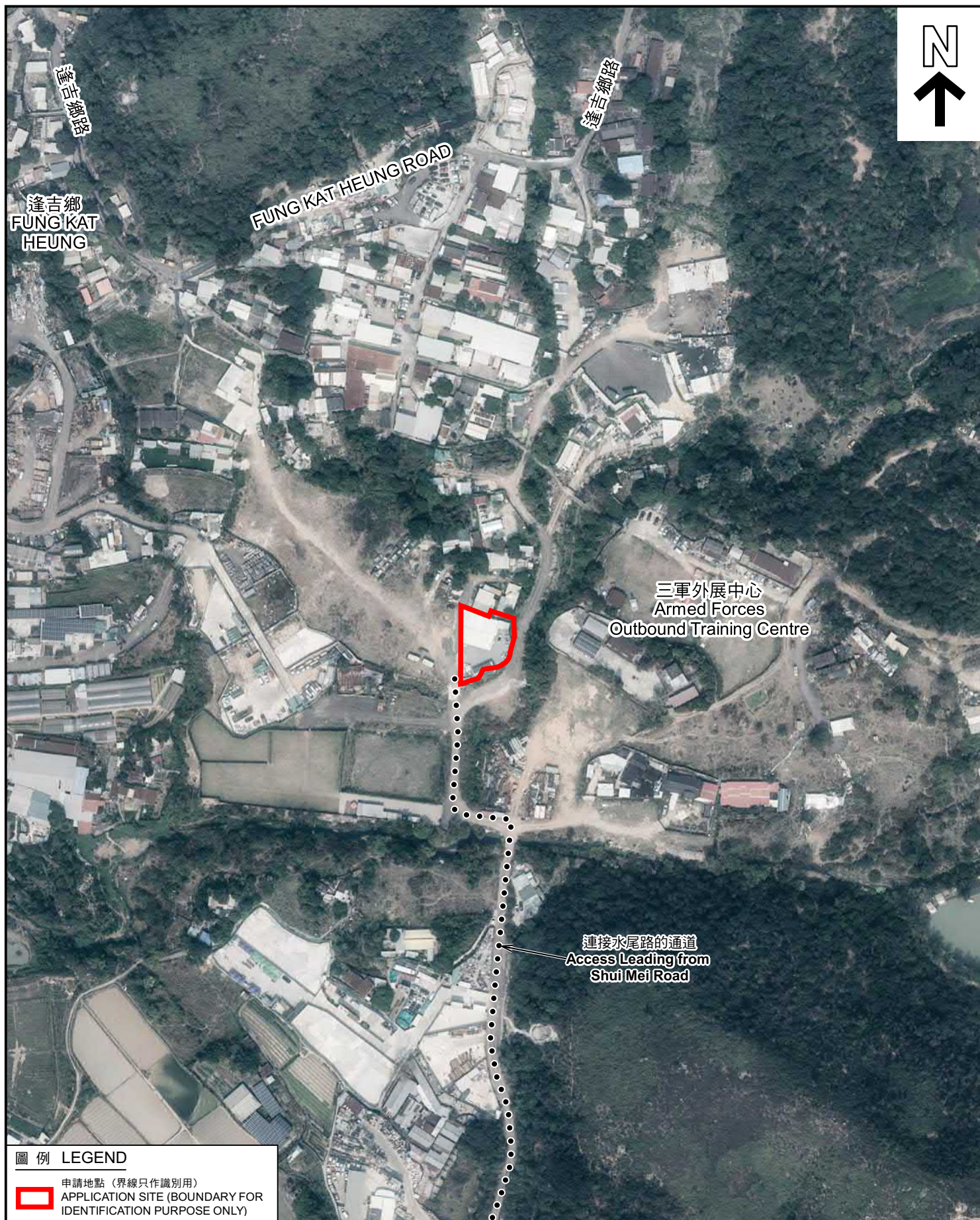
米 METRES 20 0 20 40 米 METRES

規劃署  
PLANNING  
DEPARTMENT

參考編號  
REFERENCE No.  
A/YL-KTN/992

圖 PLAN  
A-2





# 圖例 LEGEND



申請地點（界線只作識別用）  
APPLICATION SITE (BOUNDARY FOR  
IDENTIFICATION PURPOSE ONLY)

## 航攝照片 AERIAL PHOTO

本摘要圖於2024年3月5日擬備，  
所根據的資料為地政總署於2023年2月24日  
拍得的航攝照片編號 E186952C  
EXTRACT PLAN PREPARED ON 5.3.2024  
BASED ON AERIAL PHOTO No.  
E186952C TAKEN ON  
24.2.2023 BY LANDS DEPARTMENT

擬議臨時貨倉（危險品倉庫除外）連附屬設施（為期3年）及填土工程  
新界元朗錦田丈量約份第107約地段第1244號（部分）、  
第1245號（部分）、第1246號（部分）及第1247號（部分）  
PROPOSED TEMPORARY WAREHOUSE  
(EXCLUDING DANGEROUS GOODS GODOWN) WITH ANCILLARY FACILITIES  
FOR A PERIOD OF 3 YEARS AND FILLING OF LAND  
LOTS 1244 (PART), 1245 (PART), 1246 (PART) AND 1247 (PART)  
IN D.D. 107, KAM TIN, YUEN LONG, NEW TERRITORIES

規劃署  
PLANNING  
DEPARTMENT



參考編號  
REFERENCE No.  
A/YL-KTN/992

圖 PLAN  
A-3





申請地點界線只作識別用 APPLICATION SITE BOUNDARY FOR IDENTIFICATION PURPOSE ONLY

### 實地照片 SITE PHOTOS

本圖於2024年3月15日擬備，所根據的資料為攝於2024年2月23日的實地照片  
PLAN PREPARED ON 15.3.2024  
BASED ON SITE PHOTOS  
TAKEN ON 23.2.2024

擬議臨時貨倉（危險品倉庫除外）連附屬設施（為期3年）及填土工程  
新界元朗錦田丈量約份第107約地段第1244號（部分）、  
第1245號（部分）、第1246號（部分）及第1247號（部分）  
PROPOSED TEMPORARY WAREHOUSE  
(EXCLUDING DANGEROUS GOODS GODOWN) WITH ANCILLARY FACILITIES  
FOR A PERIOD OF 3 YEARS AND FILLING OF LAND  
LOTS 1244 (PART), 1245 (PART), 1246 (PART) AND 1247 (PART)  
IN D.D. 107, KAM TIN, YUEN LONG, NEW TERRITORIES

規劃署  
PLANNING  
DEPARTMENT



參考編號  
REFERENCE No.  
A/YL-KTN/992

圖 PLAN  
A-4