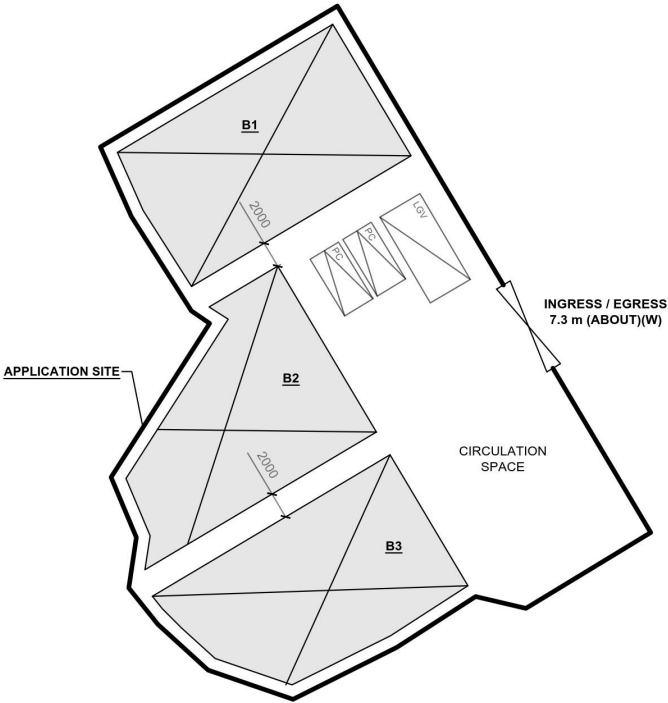
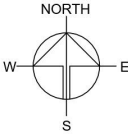


DEVELOPMENT PARAMETERS		
APPLICATION SITE AREA	: 1,270 m ²	(ABOUT)
COVERED AREA	: 646 m ²	(ABOUT)
UNCOVERED AREA	: 624 m ²	(ABOUT)
PLOT RATIO	: 0.51	(ABOUT)
SITE COVERAGE	: 51 %	(ABOUT)
NO. OF STRUCTURE	: 3	
DOMESTIC GFA	: NOT APPLICABLE	
NON-DOMESTIC GFA	: 646 m ²	(ABOUT)
TOTAL GFA	: 646 m ²	(ABOUT)
BUILDING HEIGHT	: 7 m	(ABOUT)
NO. OF STOREY	: 1	

STRUCTURE	USE	COVERED AREA	GFA	BUILDING HEIGHT
B1	WAREHOUSE (EXCLUDING D.G.G.), SITE OFFICE, WASHROOM	223 m ² (ABOUT)	223 m ² (ABOUT)	7 m (ABOUT)(1-STOREY)
B2	WAREHOUSE (EXCLUDING D.G.G.)	207 m ² (ABOUT)	134 m ² (ABOUT)	7 m (ABOUT)(1-STOREY)
B3	WAREHOUSE (EXCLUDING D.G.G.)	216 m ² (ABOUT)	147 m ² (ABOUT)	7 m (ABOUT)(1-STOREY)
TOTAL		646 m ² (ABOUT)	646 m ² (ABOUT)	

*D.G.G. - DANGEROUS GOODS GODOWN



PARKING AND LOADING / UNLOADING PROVISIONS	
NO. OF PRIVATE CAR PARKING SPACE	: 2
DIMENSION OF L/UL SPACE	: 5 m (L) x 2.5 m (W)
NO. OF L/UL SPACE FOR LIGHT GOODS VEHICLE	: 1
DIMENSION OF L/UL SPACE	: 7 m (L) x 3.5 m (W)

LEGEND	
	APPLICATION SITE
	STRUCTURE
	PARKING SPACE (PC)
	LOADING / UNLOADING SPACE (LGV)
	INGRESS / EGRESS



PROJECT
PROPOSED WAREHOUSE (EXCLUDING DANGEROUS GOODS GODOWN) WITH ANCILLARY FACILITIES FOR A PERIOD OF 3 YEARS AND ASSOCIATED FILLING OF LAND

SITE LOCATION
VARIOUS LOTS IN D.D. 107, FUNG KAT HEUNG, YUEN LONG, NEW TERRITORIES

SCALE
4:600 @ A4

DRAWN BY MN	DATE 16.1.2024
REVISD BY	DATE
APPROVED BY	DATE
DWG. TITLE LAYOUT PLAN	
DWG NO. PLAN 4	VER. 001

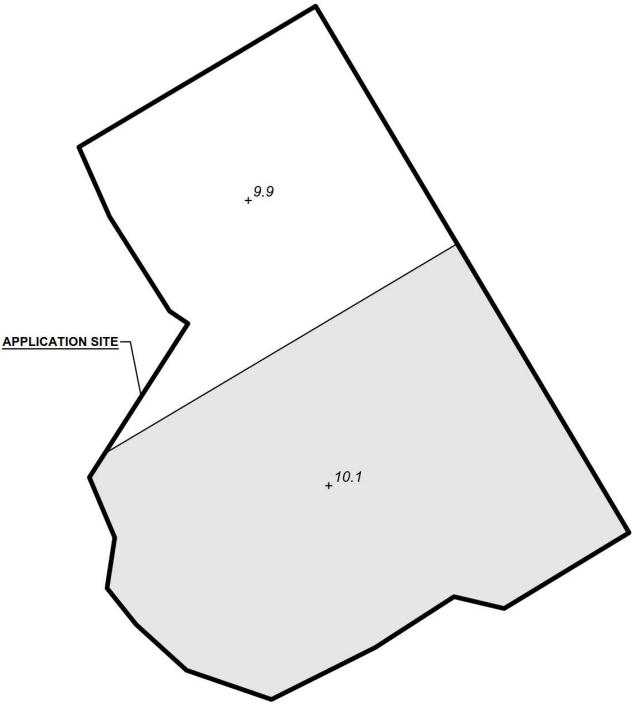
(摘錄自申請人於 7.2.2024 呈交的申請書)
(Extract from Applicant's
Submission of 7.2.2024)

參考編號
REFERENCE No.
A/YL-KTN/993

繪圖
DRAWING
A - 1

EXISTING CONDITION OF THE APPLICATION SITE

APPLICATION SITE AREA	: 1,270 m ²	(ABOUT)
SOILED GROUND AREA	: 471 m ²	(ABOUT)
HARD-PAVED AREA	: 799 m ²	(ABOUT)
EXISTING SITE LEVEL	: +9.9 mPD - +10.1 mPD	(ABOUT)

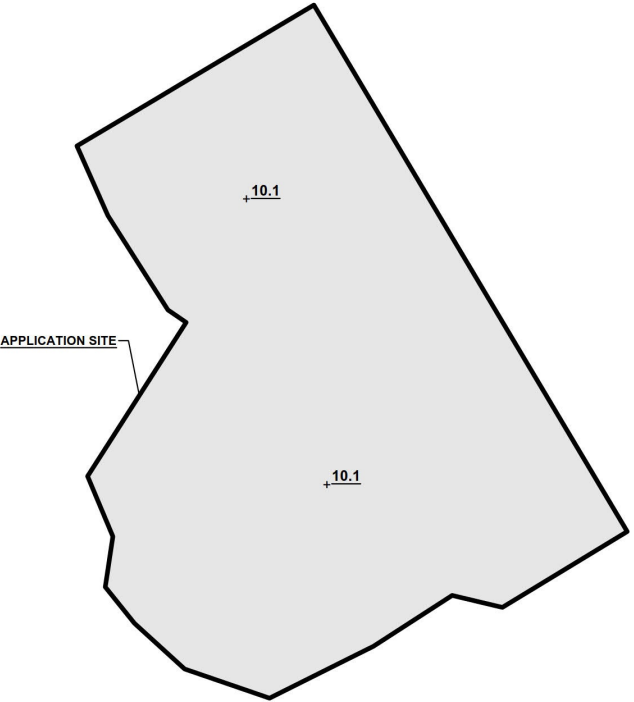


LEGEND	
	APPLICATION SITE
	EXISTING SOILED GROUND
	EXISTING HARD-PAVED AREA
+3.4	SITE LEVEL

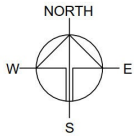
SITE LEVELS ARE FOR REFERENCE ONLY.

PROPOSED FILLING OF LAND AT THE APPLICATION SITE

APPLICATION SITE AREA	: 1,270 m ²	(ABOUT)
COVERED BY STRUCTURE	: 950 m ²	(ABOUT)
PROPOSED LAND FILLING AREA	: 1,270 m ²	(ABOUT)
DEPTH OF LAND FILLING	: NOT MORE THAN 0.2 m	(ABOUT)
PROPOSED SITE LEVELS	: +10.1 mPD (ABOUT)	
MATERIAL OF LAND FILLING	: CONCRETE	
USE	: SITE FORMATION OF STRUCTURES, AND CIRCULATION SPACE	



LEGEND	
	APPLICATION SITE
	PROPOSED HARD-PAVED AREA
+3.4	SITE LEVEL



PLANNING CONSULTANT



PROJECT

PROPOSED WAREHOUSE (EXCLUDING DANGEROUS GOODS GODOWN) WITH ANCILLARY FACILITIES FOR A PERIOD OF 3 YEARS AND ASSOCIATED FILLING OF LAND

SITE LOCATION

VARIOUS LOTS IN D.D. 107, FUNG KAT HEUNG, YUEN LONG, NEW TERRITORIES

SCALE

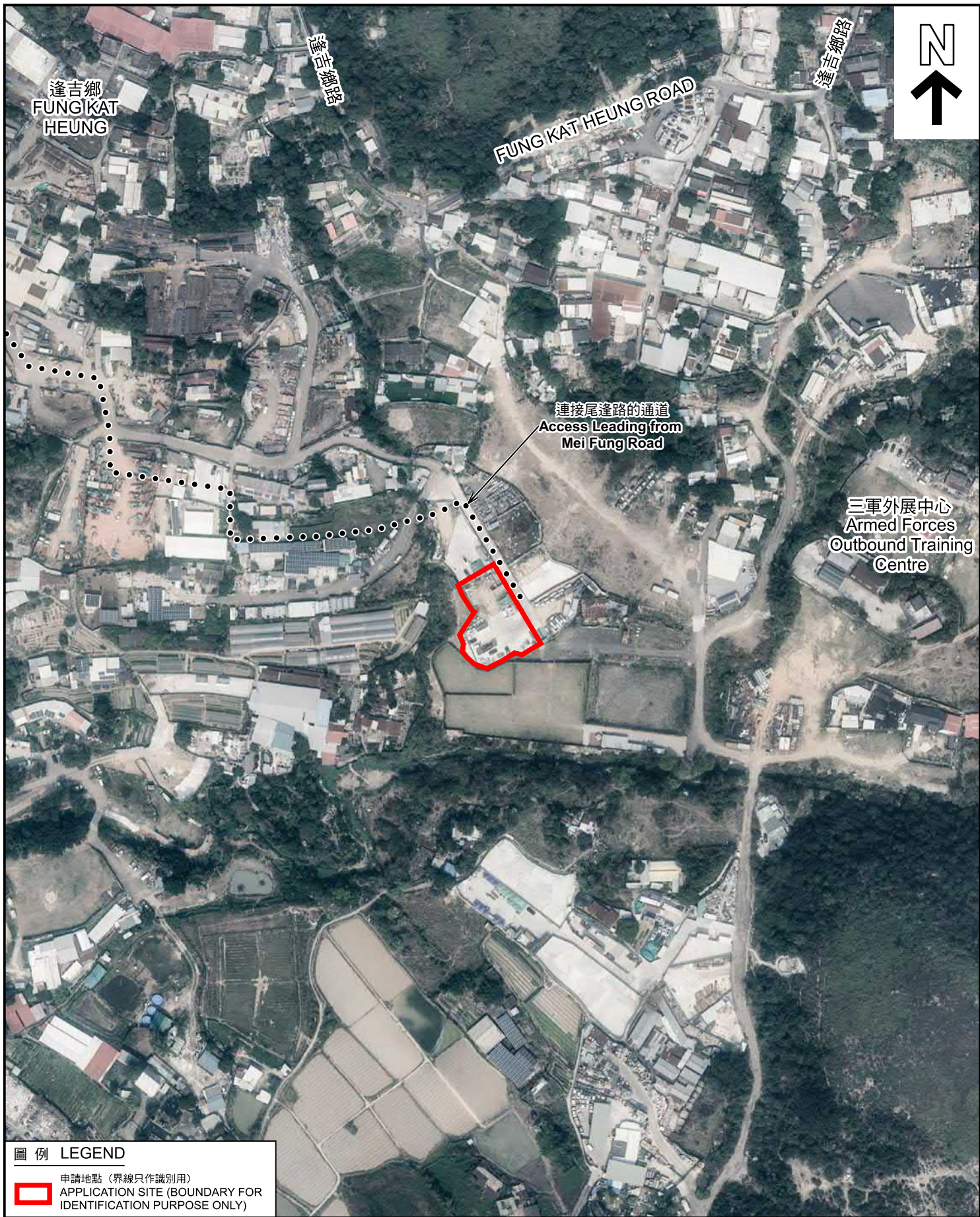
1:500 @ A4

DRAWN BY	DATE
MN	16.1.2024
REVISD BY	DATE
APPROVED BY	DATE
DWG. TITLE	
FILLING OF LAND	
DWG NO.	VER.
PLAN 5	001

(摘錄自申請人於 7.2.2024 呈交的申請書)
(Extract from Applicant's Submission of 7.2.2024)

參考編號
REFERENCE No.
A/YL-KTN/993

繪圖
DRAWING
A - 2



圖例 LEGEND

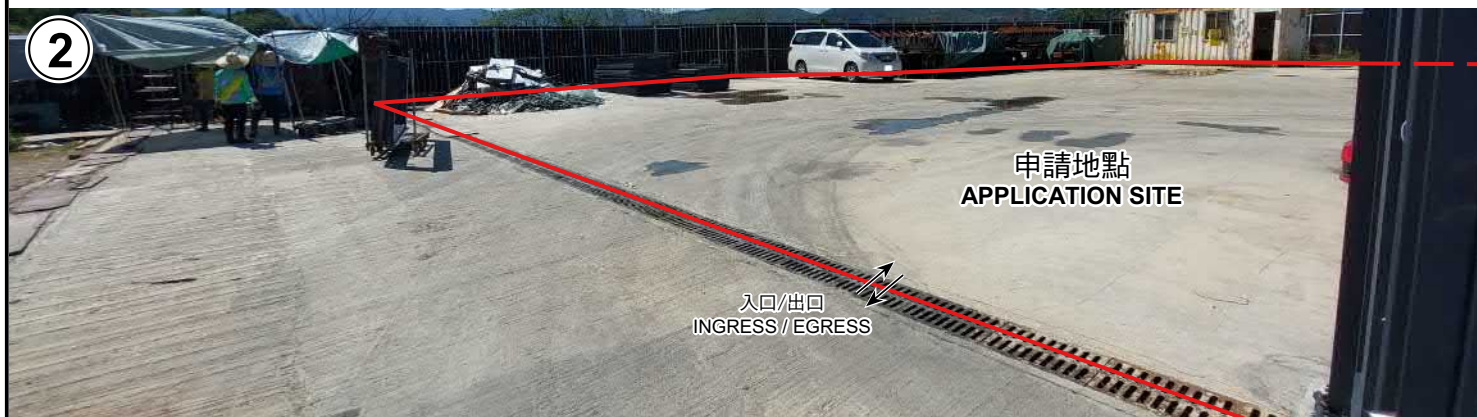
 申請地點（界線只作識別用）
APPLICATION SITE (BOUNDARY FOR IDENTIFICATION PURPOSE ONLY)

本摘要圖於2024年3月20日擬備，
所根據的資料為地政總署於2023年2月24日
拍得的航攝照片編號 E186953C
EXTRACT PLAN PREPARED ON 20.3.2024
BASED ON AERIAL PHOTO No.
E186953C TAKEN ON
24.2.2023 BY LANDS DEPARTMENT

航攝照片 AERIAL PHOTO

擬議臨時貨倉（危險品倉庫除外）連附屬設施（為期3年）及相關的填土工程
新界元朗錦田逢吉鄉丈量約份第107約地段第1226號C分段、
第1227號B分段、第1227號C分段及第1230號A分段
PROPOSED TEMPORARY WAREHOUSE
(EXCLUDING DANGEROUS GOODS GODOWN) WITH ANCILLARY FACILITIES
FOR A PERIOD OF 3 YEARS AND ASSOCIATED FILLING OF LAND
LOTS 1226 S.C, 1227 S.B, 1227 S.C AND 1230 S.A IN D.D.107,
FUNG KAT HEUNG, KAM TIN, YUEN LONG, NEW TERRITORIES

規劃署 PLANNING DEPARTMENT		
參考編號 REFERENCE No. A/YL-KTN/993	圖 PLAN A-3	



申請地點界線只作識別用 APPLICATION SITE BOUNDARY FOR IDENTIFICATION PURPOSE ONLY

實地照片 SITE PHOTOS

本圖於2024年3月19日擬備，所根據的資料為攝於2024年3月12日的實地照片
PLAN PREPARED ON 19.3.2024
BASED ON SITE PHOTOS
TAKEN ON 12.3.2024

擬議臨時貨倉（危險品倉庫除外）連附屬設施（為期3年）及相關的填土工程
新界元朗錦田逢吉鄉丈量約份第107約地段第1226號C分段、
第1227號B分段、第1227號C分段及第1230號A分段
PROPOSED TEMPORARY WAREHOUSE
(EXCLUDING DANGEROUS GOODS GODOWN) WITH ANCILLARY FACILITIES
FOR A PERIOD OF 3 YEARS AND ASSOCIATED FILLING OF LAND
LOTS 1226 S.C, 1227 S.B, 1227 S.C AND 1230 S.A IN D.D.107,
FUNG KAT HEUNG, KAM TIN, YUEN LONG, NEW TERRITORIES

規 劃 署
PLANNING
DEPARTMENT



參考編號
REFERENCE No.
A/YL-KTN/993

圖 PLAN
A-4