

## DEVELOPMENT PARAMETERS

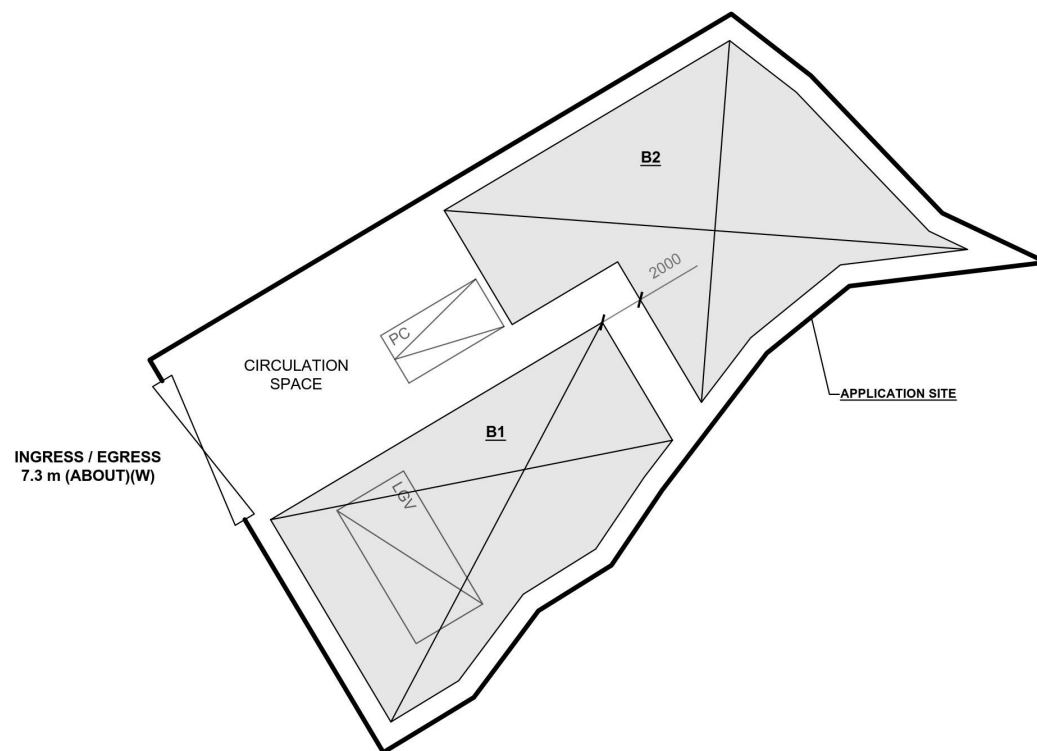
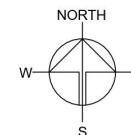
APPLICATION SITE AREA	: 565 m <sup>2</sup>	(ABOUT)
COVERED AREA	: 328 m <sup>2</sup>	(ABOUT)
UNCOVERED AREA	: 237 m <sup>2</sup>	(ABOUT)
PLOT RATIO	: 0.58	(ABOUT)
SITE COVERAGE	: 58 %	(ABOUT)

NO. OF STRUCTURE	: 2	
DOMESTIC GFA	: NOT APPLICABLE	
NON-DOMESTIC GFA	: 328 m <sup>2</sup>	(ABOUT)
TOTAL GFA	: 328 m <sup>2</sup>	(ABOUT)

BUILDING HEIGHT	: 7 m	(ABOUT)
NO. OF STOREY	: 1	

STRUCTURE	USE	COVERED AREA	GFA	BUILDING HEIGHT
B1	WAREHOUSE (EXCLUDING D.G.G.), SITE OFFICE AND WASHROOM	172 m <sup>2</sup> (ABOUT)	172 m <sup>2</sup> (ABOUT)	7 m (ABOUT)(1-STOREY)
B2	WAREHOUSE (EXCLUDING D.G.G.)	156 m <sup>2</sup> (ABOUT)	156 m <sup>2</sup> (ABOUT)	7 m (ABOUT)(1-STOREY)
TOTAL		328 m <sup>2</sup> (ABOUT)	328 m <sup>2</sup> (ABOUT)	

\*D.G.G. - DANGEROUS GOODS GODOWN



## PARKING AND LOADING / UNLOADING PROVISIONS

NO. OF PRIVATE CAR PARKING SPACE	: 1
DIMENSION OF PARKING SPACE	: 5 m (L) x 2.5 m (W)

NO. OF L/UL SPACE FOR LIGHT GOODS VEHICLE	: 1
DIMENSION OF L/UL SPACE	: 7 m (L) x 3.5 m (W)

## LEGEND

	APPLICATION SITE
	STRUCTURE
	PARKING SPACE (PC)
	LOADING / UNLOADING SPACE (LGV)
	INGRESS / EGRESS

PLANNING CONSULTANT



PROJECT

PROPOSED WAREHOUSE (EXCLUDING DANGEROUS GOODS GODOWN) WITH ANCILLARY FACILITIES FOR A PERIOD OF 3 YEARS AND ASSOCIATED FILLING OF LAND

SITE LOCATION

VARIOUS LOTS IN D.D. 107, FUNG KAT HEUNG, YUEN LONG, NEW TERRITORIES

SCALE

4:300 @ A4

DRAWN BY	DATE
MN	16.1.2024
REVISD BY	DATE
APPROVED BY	DATE

DWG. TITLE  
LAYOUT PLAN

DWG NO.	VER.
PLAN 4	001

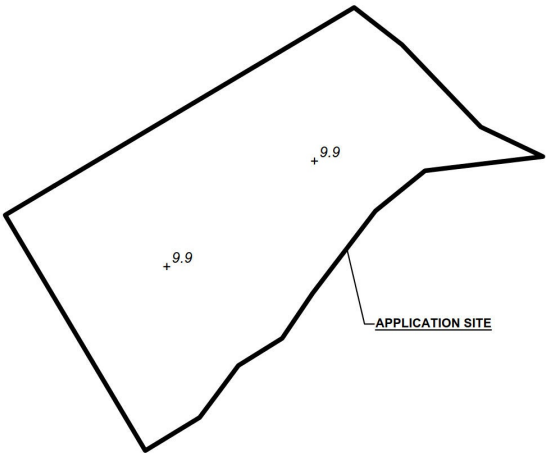
(摘錄自申請人於 21.2.2024 呈交的申請書)  
(Extract from Applicant's  
Submission of 21.2.2024)

參考編號  
REFERENCE No.  
A/YL-KTN/996

繪圖  
DRAWING  
A - 1

APPLICATION SITE BEFORE FILLING OF LAND

APPLICATION SITE AREA : 565 m<sup>2</sup> (ABOUT)  
EXISTING SITE LEVEL : +9.9 mPD (ABOUT)  
EXISTING GROUND SURFACE : SOILED GROUND



LEGEND

	APPLICATION SITE
+3.4	SITE LEVEL

SITE LEVELS ARE FOR REFERENCE ONLY.

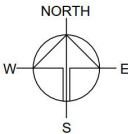
EXISTING FILLING OF LAND AREA

APPLICATION SITE AREA : 565 m<sup>2</sup> (ABOUT)  
PROPOSED LAND FILLING AREA : 565 m<sup>2</sup> (ABOUT)  
DEPTH OF LAND FILLING : NOT MORE THAN 0.2 m  
PROPOSED SITE LEVELS : +10.1 mPD (ABOUT)  
MATERIAL OF LAND FILLING : CONCRETE  
USE : SITE FORMATION OF STRUCTURES, AND CIRCULATION SPACE



LEGEND

	APPLICATION SITE
	LAND FILLING AREA
+3.4	SITE LEVEL



PROJECT

PROPOSED WAREHOUSE (EXCLUDING DANGEROUS GOODS GODOWN) WITH ANCILLARY FACILITIES FOR A PERIOD OF 3 YEARS AND ASSOCIATED FILLING OF LAND

SITE LOCATION

VARIOUS LOTS IN D.D. 107, FUNG KAT HEUNG, YUEN LONG, NEW TERRITORIES

SCALE

1:500 @ A4

DRAWN BY	DATE
MN	16.1.2024
REVISED BY	DATE
APPROVED BY	DATE

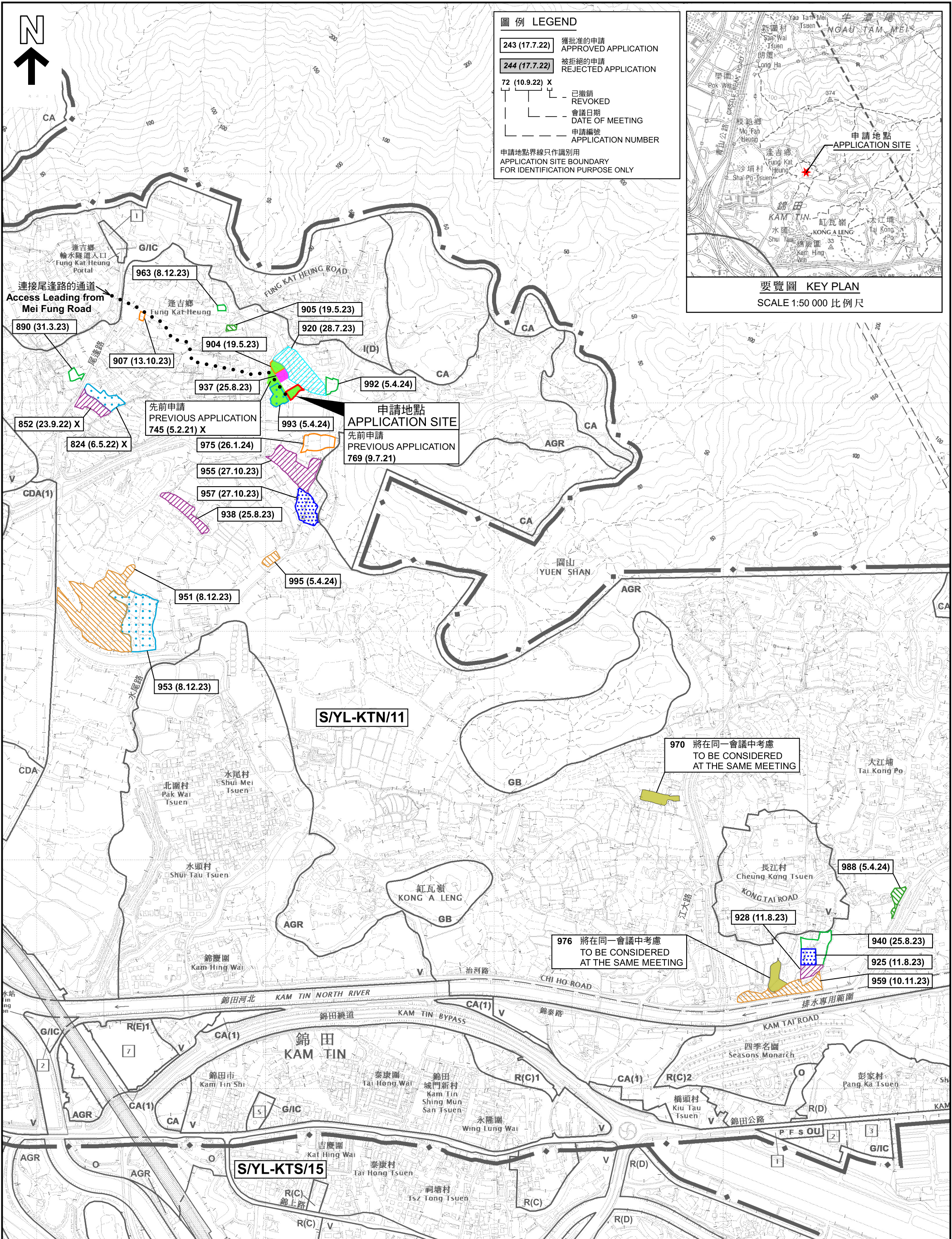
DWG. TITLE	VER.
FILLING OF LAND	001
DWG NO.	
PLAN 5	

(摘錄自申請人於 21.2.2024 呈交的申請書)  
(Extract from Applicant's Submission of 21.2.2024)

參考編號  
REFERENCE No.  
A/YL-KTN/996

繪圖  
DRAWING  
A - 2

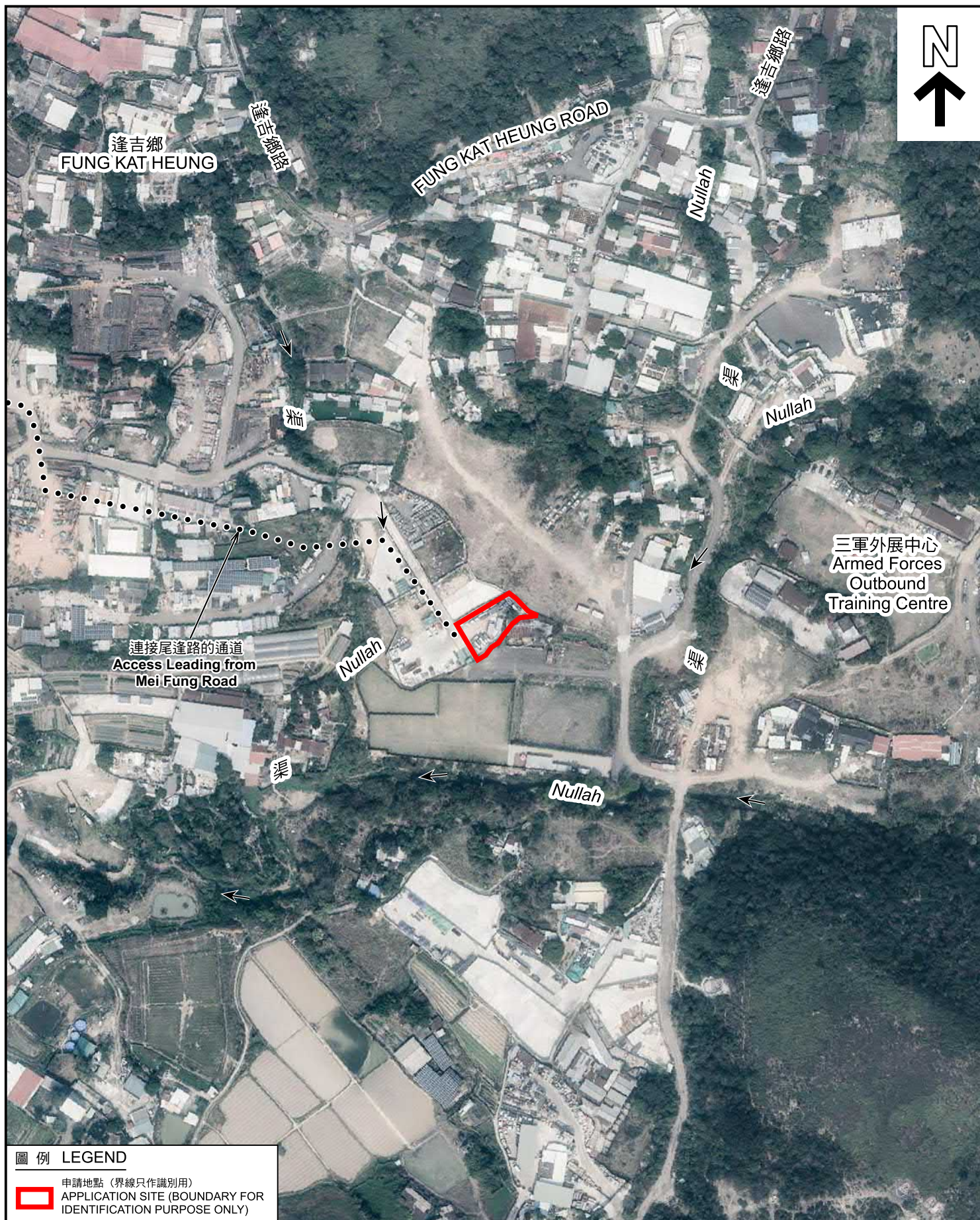












# 圖例 LEGEND



申請地點（界線只作識別用）  
APPLICATION SITE (BOUNDARY FOR  
IDENTIFICATION PURPOSE ONLY)

## 航攝照片 AERIAL PHOTO

本摘要圖於2024年4月5日擬備，  
所根據的資料為地政總署於2023年2月24日  
拍得的航攝照片編號E186952C及E186953C  
EXTRACT PLAN PREPARED ON 5.4.2024  
BASED ON AERIAL PHOTOS No.  
E186952C & E186953C TAKEN ON  
24.2.2023 BY LANDS DEPARTMENT

擬議臨時貨倉（危險品倉庫除外）  
連附屬設施（為期3年）及相關的填土工程  
新界元朗錦田逢吉鄉丈量約份第107約地段第1225號C分段、  
第1226號E分段及第1230號B分段  
PROPOSED TEMPORARY WAREHOUSE  
(EXCLUDING DANGEROUS GOODS GODOWN) WITH ANCILLARY FACILITIES  
FOR A PERIOD OF 3 YEARS AND ASSOCIATED FILLING OF LAND  
LOTS 1225 S.C, 1226 S.E AND 1230 S.B IN D.D.107,  
FUNG KAT HEUNG, KAM TIN, YUEN LONG, NEW TERRITORIES

規劃署  
PLANNING  
DEPARTMENT



參考編號  
REFERENCE No.  
A/YL-KTN/996

圖 PLAN  
A-3



1

申請地點  
APPLICATION SITE



2



3



申請地點界線只作識別用 APPLICATION SITE BOUNDARY FOR IDENTIFICATION PURPOSE ONLY

### 實地照片 SITE PHOTOS

本圖於2024年4月3日擬備，所根據的資料為攝於2024年2月29日的實地照片  
PLAN PREPARED ON 3.4.2024  
BASED ON SITE PHOTOS  
TAKEN ON 29.2.2024

擬議臨時貨倉（危險品倉庫除外）  
連附屬設施（為期3年）及相關的填土工程  
新界元朗錦田達吉鄉丈量約份第107約地段第1225號C分段、  
第1226號E分段及第1230號B分段  
PROPOSED TEMPORARY WAREHOUSE  
(EXCLUDING DANGEROUS GOODS GODOWN) WITH ANCILLARY FACILITIES  
FOR A PERIOD OF 3 YEARS AND ASSOCIATED FILLING OF LAND  
LOTS 1225 S.C, 1226 S.E AND 1230 S.B IN D.D.107,  
FUNG KAT HEUNG, KAM TIN, YUEN LONG, NEW TERRITORIES

規劃署  
PLANNING  
DEPARTMENT



參考編號  
REFERENCE No.  
A/YL-KTN/996

圖 PLAN  
A-4