

(摘錄自申請人於 13. 1. 2025 呈交的進一步資料)  
(Extract from Applicant's Further  
Information Submitted on 13.1.2025)

參考編號  
REFERENCE No.  
A/YL-KTS/1011

繪圖  
DRAWING  
A - 1

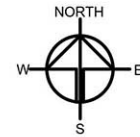
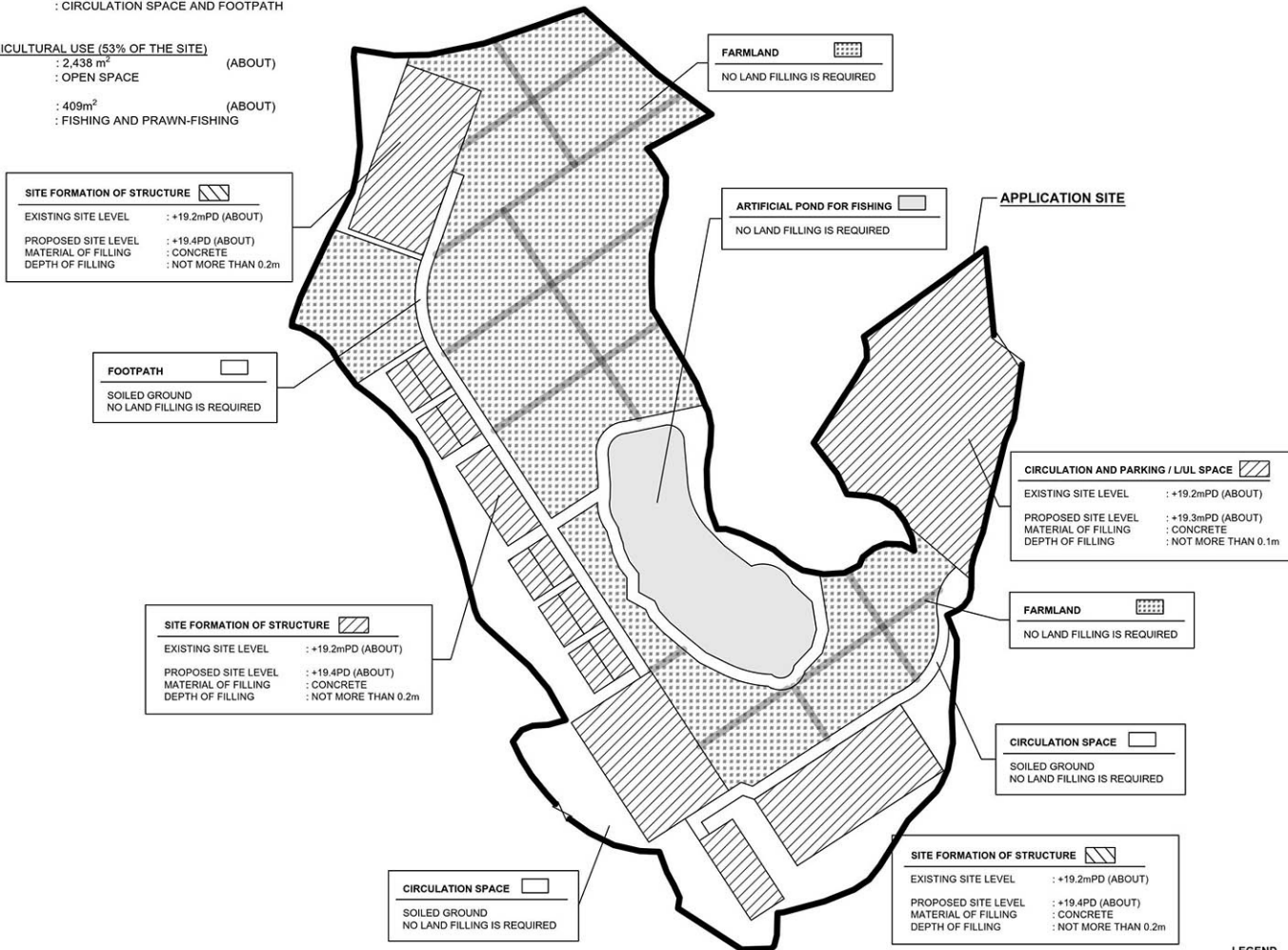
# PAVED RATIO OF THE APPLICATION SITE

APPLICATION SITE AREA	: 5,381 m <sup>2</sup>	(ABOUT)
COVERED BY STRUCTURE	: 950 m <sup>2</sup>	(ABOUT)
LAND FILLING AREA	: 1,545 m <sup>2</sup>	(ABOUT)
EXISTING SITE LEVEL	: +19.2 mPD	(ABOUT)
PROPOSED SITE LEVEL	: +19.3 mPD TO +19.4 mPD	(ABOUT)
DEPTH OF LAND FILLING	: NOT MORE THAN 0.2m	(ABOUT)
MATERIAL OF LAND FILLING	: CONCRETE	
PURPOSE OF LAND FILLING	: SITE FORMATION OF STRUCTURES PARKING AND LUL SPACE	

SOILED GROUND AREA	: 989m <sup>2</sup>	(ABOUT)
USE	: CIRCULATION SPACE AND FOOTPATH	

FOR RECREATIONAL AGRICULTURAL USE (53% OF THE SITE)		
FARMLAND AREA	: 2,438 m <sup>2</sup>	(ABOUT)
USE	: OPEN SPACE	

ARTIFICIAL POND AREA	: 409m <sup>2</sup>	(ABOUT)
USE	: FISHING AND PRAWN-FISHING	



PLANNING CONSULTANT	R-RICHES PROPERTY CONSULTANTS LIMITED	
PROJECT	PROPOSED TEMPORARY PLACE OF RECREATION, SPORTS OR CULTURE (HOBBY FARM AND FISHING GROUND), BARBECUE SITE, EDUCATION CENTRE WITH ANCILLARY EATING PLACE FOR A PERIOD OF 3 YEARS AND LAND FILLING	
SITE LOCATION	VARIOUS LOTS IN D.D. 113, KAM TIN, YUEN LONG, NEW TERRITORIES	
SCALE	1:800 @ A+	
DRAWN BY	MN	DATE: 17.5.2022
REVISED BY	MN	DATE: 21.7.2022
APPROVED BY		DATE:
DWG. TITLE	LAND FILLING AREA	
DWG NO.	Plan 5	VER: 001

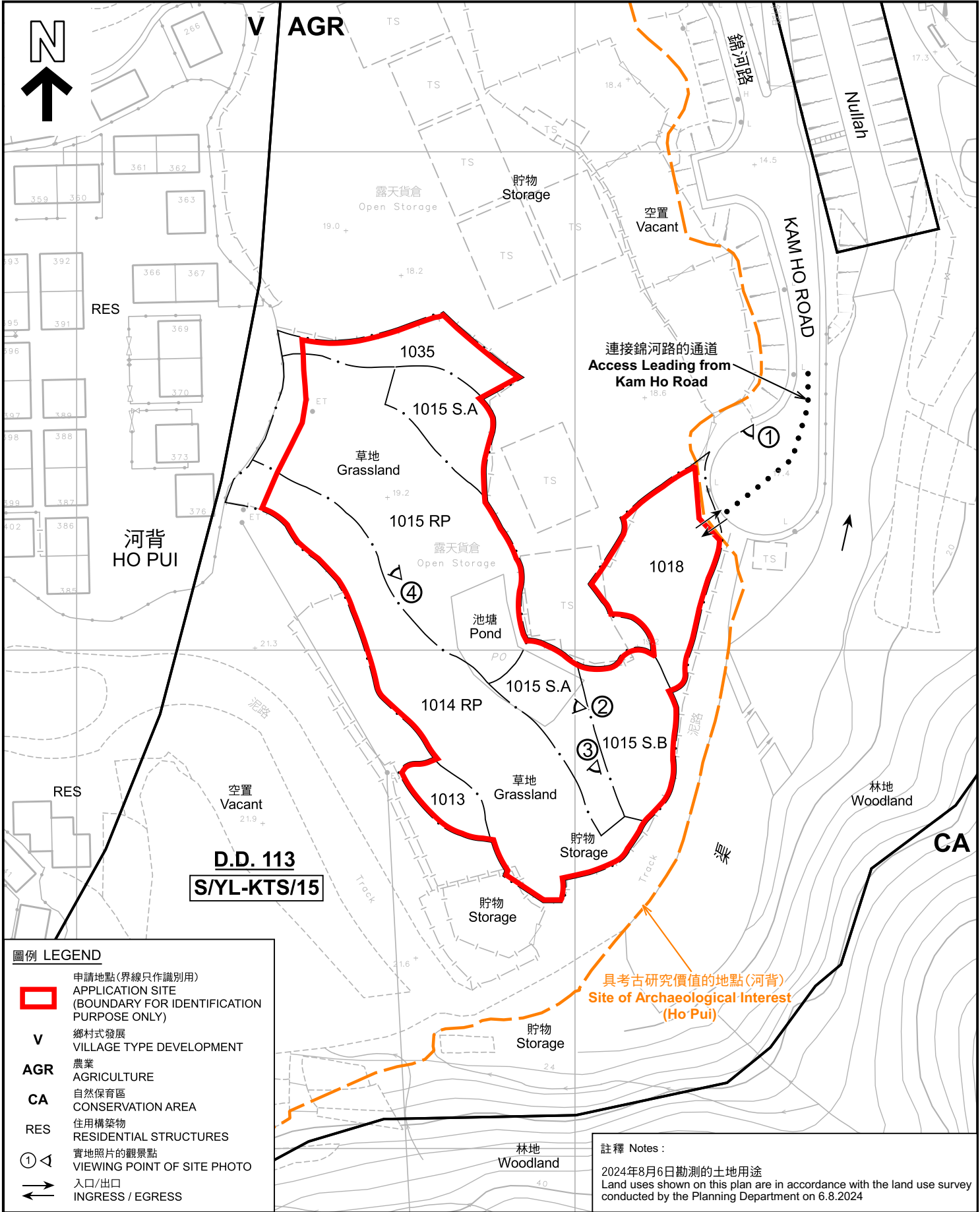
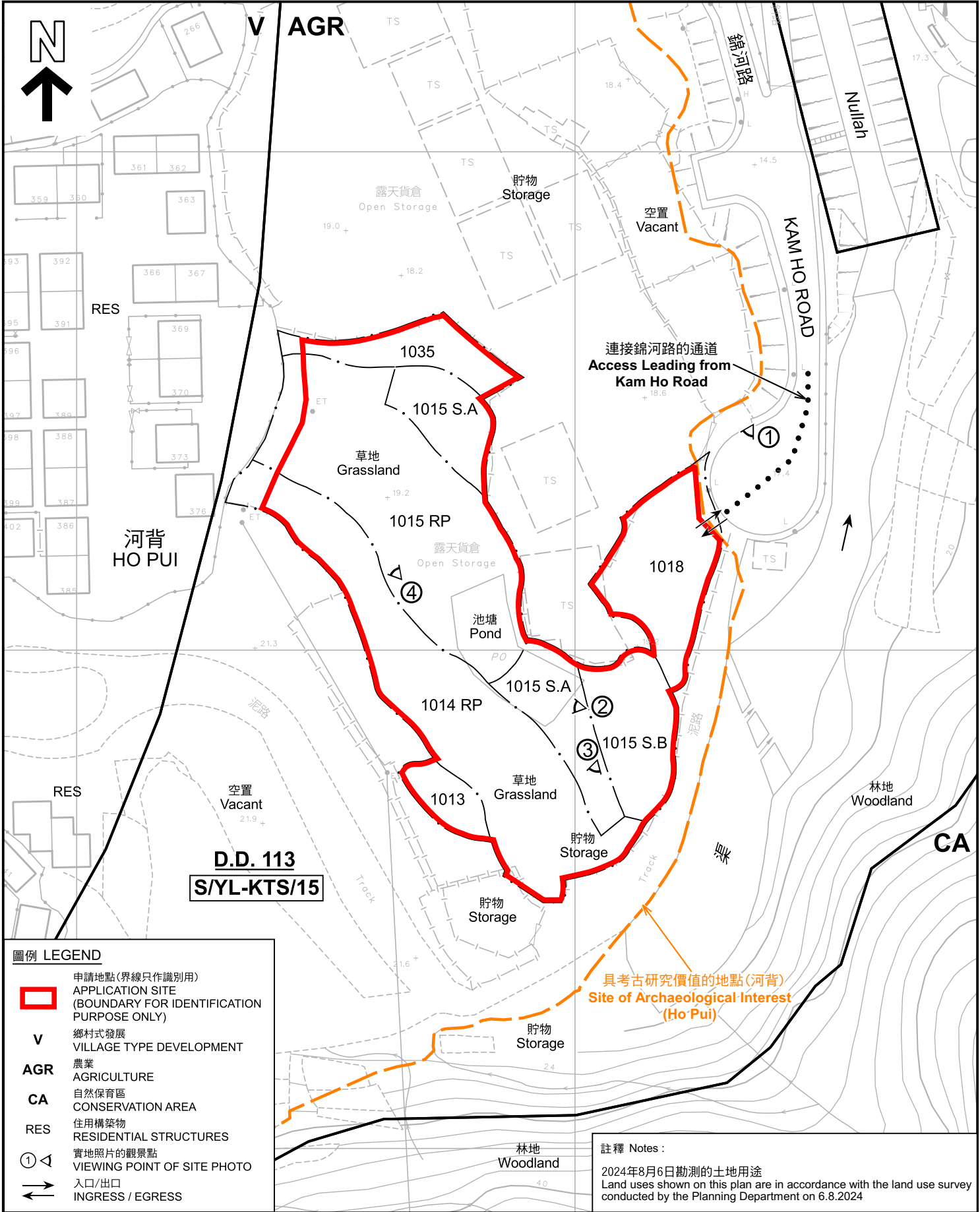
LEGEND	
	APPLICATION SITE
	INGRESS / EGRESS

(摘錄自申請人於 17.7.2024 呈交的申請書)  
(Extract from Applicant's Submission of 17.7.2024)

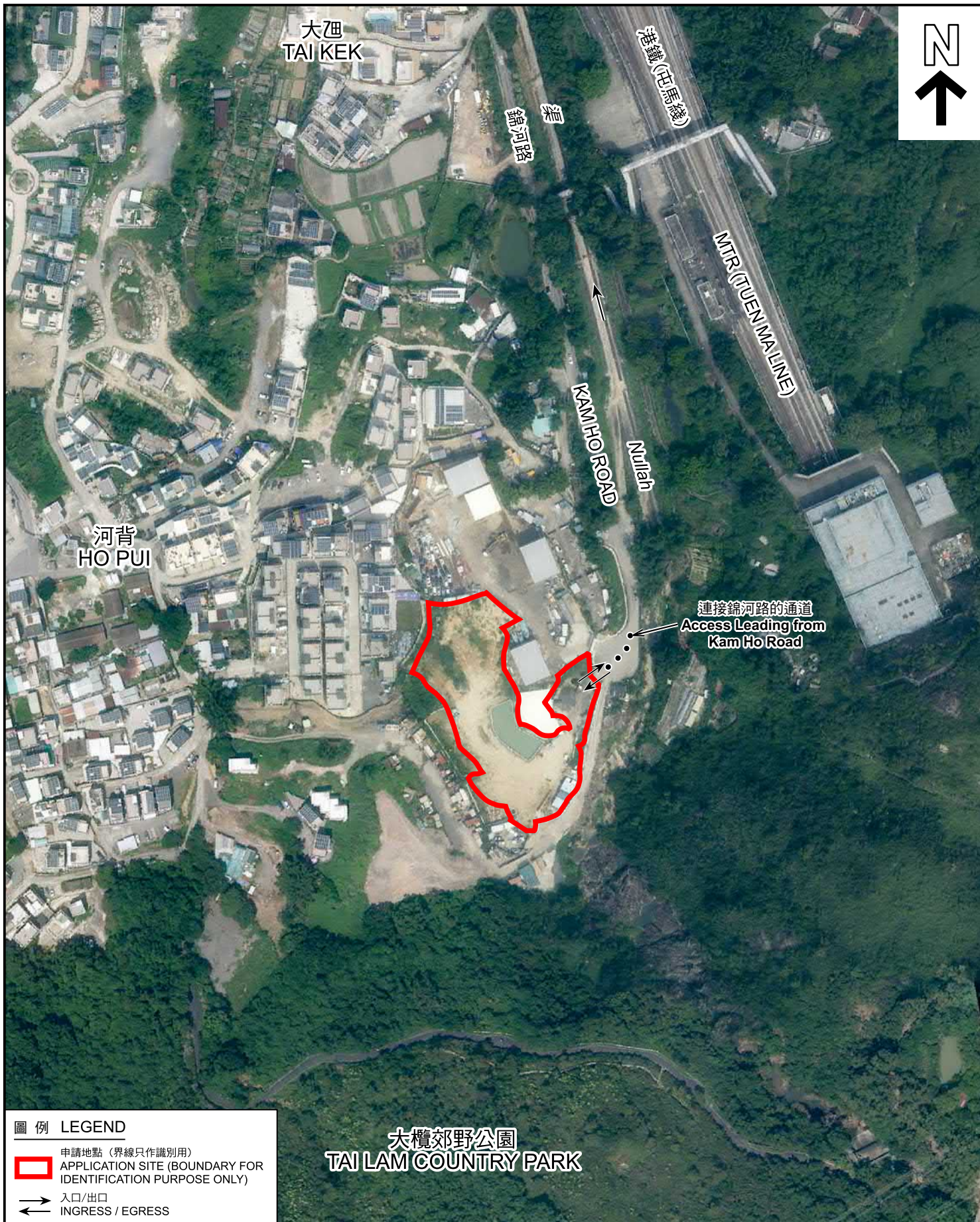
參考編號  
REFERENCE No.  
A/YL-KTS/1011

繪圖  
DRAWING  
A - 2









圖例 LEGEND

-  申請地點 (界線只作識別用)  
APPLICATION SITE (BOUNDARY FOR IDENTIFICATION PURPOSE ONLY)
-  入口/出口  
INGRESS / EGRESS

大欖郊野公園  
TAI LAM COUNTRY PARK

航攝照片 AERIAL PHOTO

本摘要圖於2025年2月7日擬備，  
所根據的資料為地政總署於2023年10月5日  
拍得的航攝照片編號 E209713C  
EXTRACT PLAN PREPARED ON 7.2.2025  
BASED ON AERIAL PHOTO NO.  
E209713C TAKEN ON 5.10.2023  
BY LANDS DEPARTMENT

臨時康體文娛場所(休閒農莊及釣魚場)、  
燒烤地點及教育中心連附屬食肆(為期3年)及相關填土工程  
新界元朗錦田丈量約份第113約地段第1013號、第1014號餘段(部分)、第1015號A分段、  
第1015號B分段、第1015號餘段(部分)、第1018號(部分)及第1035號(部分)  
TEMPORARY PLACE OF RECREATION, SPORTS OR CULTURE  
(HOBBY FARM AND FISHING GROUND), BARBECUE SITE AND EDUCATION CENTRE WITH  
ANCILLARY EATING PLACE FOR A PERIOD OF 3 YEARS AND ASSOCIATED FILLING OF LAND  
LOTS 1013, 1014 RP (PART), 1015 S.A, 1015 S.B, 1015 RP (PART),  
1018 (PART) AND 1035 (PART) IN D.D.113, KAM TIN, YUEN LONG, NEW TERRITORIES

規劃署  
PLANNING  
DEPARTMENT



參考編號  
REFERENCE No.  
A/YL-KTS/1011

圖 PLAN  
A-3





申請地點界線只作識別用 APPLICATION SITE BOUNDARY FOR IDENTIFICATION PURPOSE ONLY

### 實地照片 SITE PHOTOS

本圖於2025年2月7日擬備，所根據的資料為攝於2025年1月28日的實地照片  
PLAN PREPARED ON 7.2.2025  
BASED ON SITE PHOTOS  
TAKEN ON 28.1.2025

臨時康體文娛場所(休閒農莊及釣魚場)、  
燒烤地點及教育中心連附屬食肆(為期3年)及相關填土工程  
新界元朗錦田丈量約份第113約地段第1013號、第1014號餘段(部分)、第1015號A分段、  
第1015號B分段、第1015號餘段(部分)、第1018號(部分)及第1035號(部分)  
TEMPORARY PLACE OF RECREATION, SPORTS OR CULTURE  
(HOBBY FARM AND FISHING GROUND), BARBECUE SITE AND EDUCATION CENTRE WITH  
ANCILLARY EATING PLACE FOR A PERIOD OF 3 YEARS AND ASSOCIATED FILLING OF LAND  
LOTS 1013, 1014 RP (PART), 1015 S.A, 1015 S.B, 1015 RP (PART),  
1018 (PART) AND 1035 (PART) IN D.D.113, KAM TIN, YUEN LONG, NEW TERRITORIES

規劃署  
PLANNING  
DEPARTMENT



參考編號  
REFERENCE No.  
A/YL-KTS/1011

圖 PLAN  
A-4