

(摘錄自申請人於 29.8.2024 呈交的申請書)
(Extract from Applicant's
Submission of 29.8.2024)

參考編號
REFERENCE No.
A/YL-KTS/1023

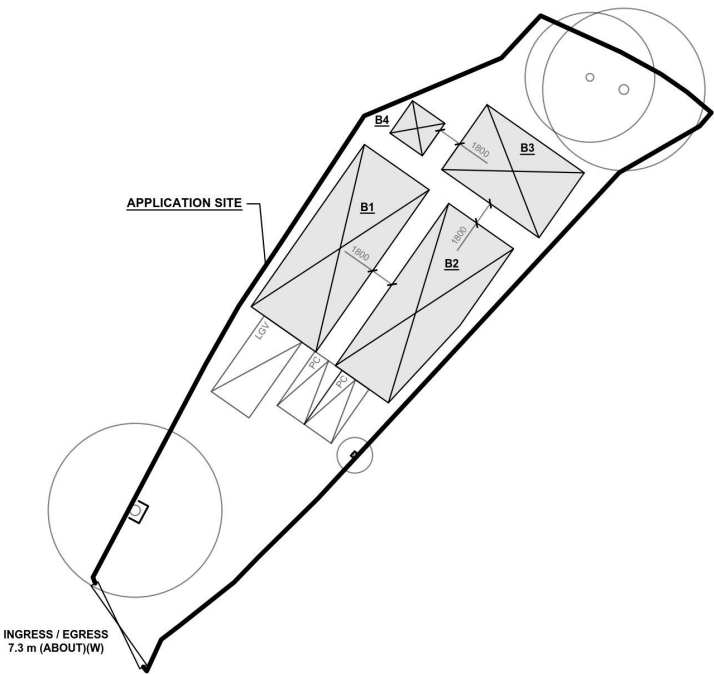
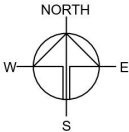
繪圖
DRAWING
A - 1

DEVELOPMENT PARAMETERS

APPLICATION SITE AREA	: 770 m ²	(ABOUT)
COVERED AREA	: 239 m ²	(ABOUT)
UNCOVERED AREA	: 531 m ²	(ABOUT)
PLOT RATIO	: 0.5	(ABOUT)
SITE COVERAGE	: 31 %	(ABOUT)
NO. OF STRUCTURE	: 4	
DOMESTIC GFA	: NOT APPLICABLE	
NON-DOMESTIC GFA	: 383 m ²	(ABOUT)
TOTAL GFA	: 383 m ²	(ABOUT)
BUILDING HEIGHT	: 3 m - 7 m	(ABOUT)
NO. OF STOREY	: 1 - 2	

ALL EXISTING TREES WILL BE WELL PRESERVED BY THE APPLICANT DURING THE PLANNING APPROVAL PERIOD.

STRUCTURE	USE	COVERED AREA	GFA	BUILDING HEIGHT
B1	WAREHOUSE (EXCLUDING D.G.G.) AND SITE OFFICE	90 m ² (ABOUT)	180 m ² (ABOUT)	7 m (ABOUT)(2-STOREY)
B2	WAREHOUSE (EXCLUDING D.G.G.)	86 m ² (ABOUT)	86 m ² (ABOUT)	7 m (ABOUT)(1-STOREY)
B3	WAREHOUSE (EXCLUDING D.G.G.)	54 m ² (ABOUT)	108 m ² (ABOUT)	7 m (ABOUT)(2-STOREY)
B4	WASHROOM	9 m ² (ABOUT)	9 m ² (ABOUT)	3 m (ABOUT)(1-STOREY)
TOTAL		239 m ² (ABOUT)	383 m ² (ABOUT)	



PARKING AND LOADING/UNLOADING PROVISION

NO. OF PRIVATE CAR PARKING SPACE	: 2
DIMENSION OF PARKING SPACE	: 5 m (L) X 2.5 m (W)
NO. OF LIGHT GOODS VEHICLE PARKING SPACE	: 1
DIMENSION OF LOADING/UNLOADING SPACE	: 7 m (L) X 3.5 m (W)

LEGEND

	APPLICATION SITE
	STRUCTURE
	PARKING SPACE
	LOADING / UNLOADING SPACE (LGV)
	INGRESS / EGRESS
	EXISTING TREE

PLANNING CONSULTANT



PROJECT

PROPOSED TEMPORARY
WAREHOUSE (EXCLUDING
DANGEROUS GOODS GODOWN)
WITH ANCILLARY FACILITIES
FOR A PERIOD OF 3 YEARS AND
ASSOCIATED FILLING OF LAND

SITE LOCATION

LOT 1165 (PART) IN D.D. 106,
PAT HEUNG, YUEN LONG, NEW
TERRITORIES

SCALE

1:500 @ A1

DRAWN BY

MN

DATE

14.8.2024

CHECKED BY

DATE

APPROVED BY

DATE

DWG. TITLE

LAYOUT PLAN

DWG NO.

PLAN 4

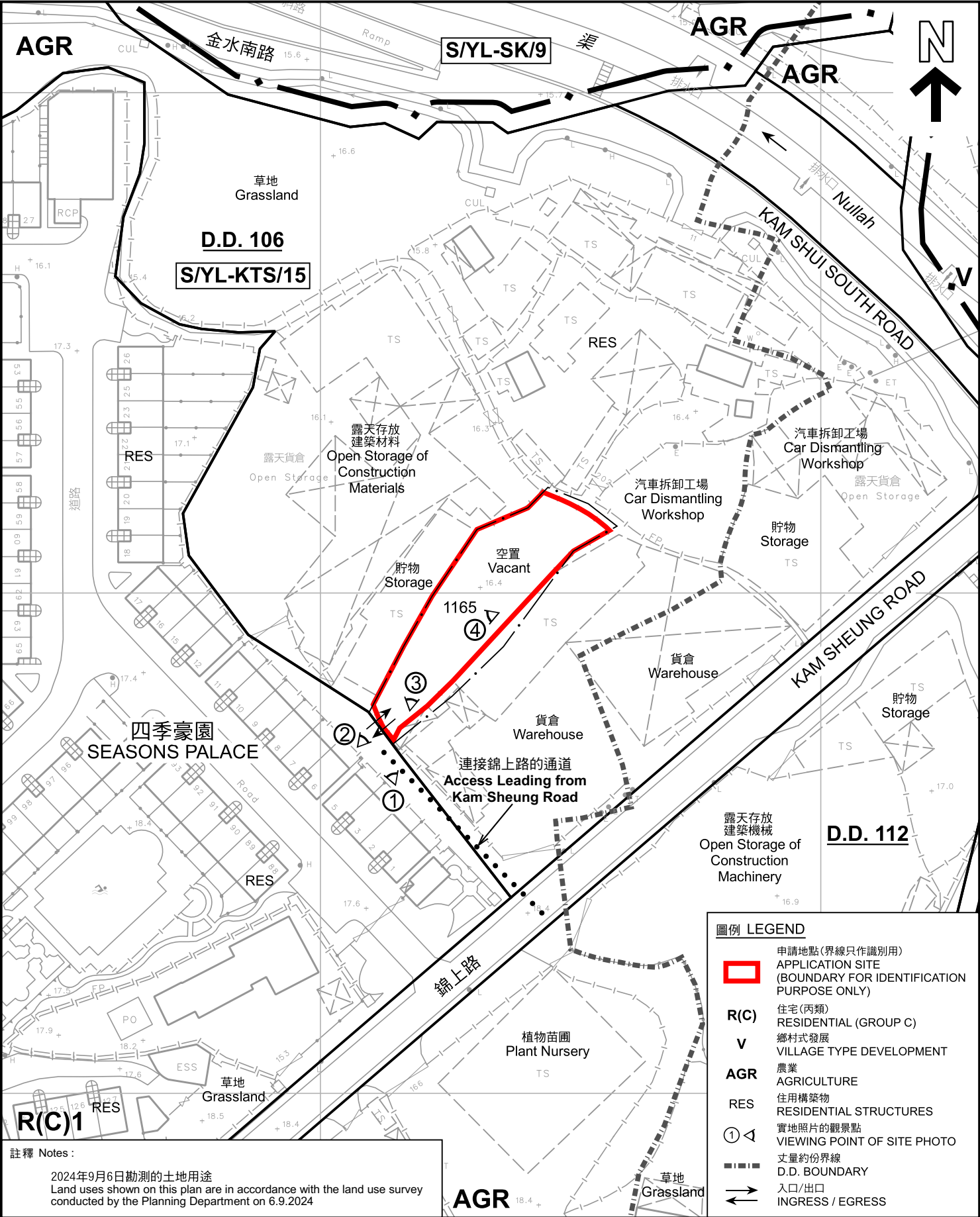
VER.

001

(摘錄自申請人於 29. 8. 2024 呈交的申請書)
(Extract from Applicant's
Submission of 29.8.2024)

參考編號
REFERENCE No.
A/YL-KTS/1023

繪圖
DRAWING
A - 2



註釋 Notes :

2024年9月6日勘測的土地用途
Land uses shown on this plan are in accordance with the land use survey conducted by the Planning Department on 6.9.2024

本摘要圖於2024年10月22日擬備，
所根據的資料為測量圖編號
6-NE-18B
EXTRACT PLAN PREPARED ON 22.10.2024
BASED ON SURVEY SHEET No.
6-NE-18B

平面圖 SITE PLAN

擬議臨時貨倉(危險品倉庫除外)連附屬設施(為期3年)及相關填土工程
新界元朗錦田丈量約份第106約地段第1165號(部分)
PROPOSED TEMPORARY WAREHOUSE (EXCLUDING DANGEROUS
GOODS GODOWN) WITH ANCILLARY FACILITIES
FOR A PERIOD OF 3 YEARS AND ASSOCIATED FILLING OF LAND
LOT 1165 (PART) IN D.D. 106, KAM TIN,
YUEN LONG, NEW TERRITORIES

SCALE 1 : 1 000 比例尺

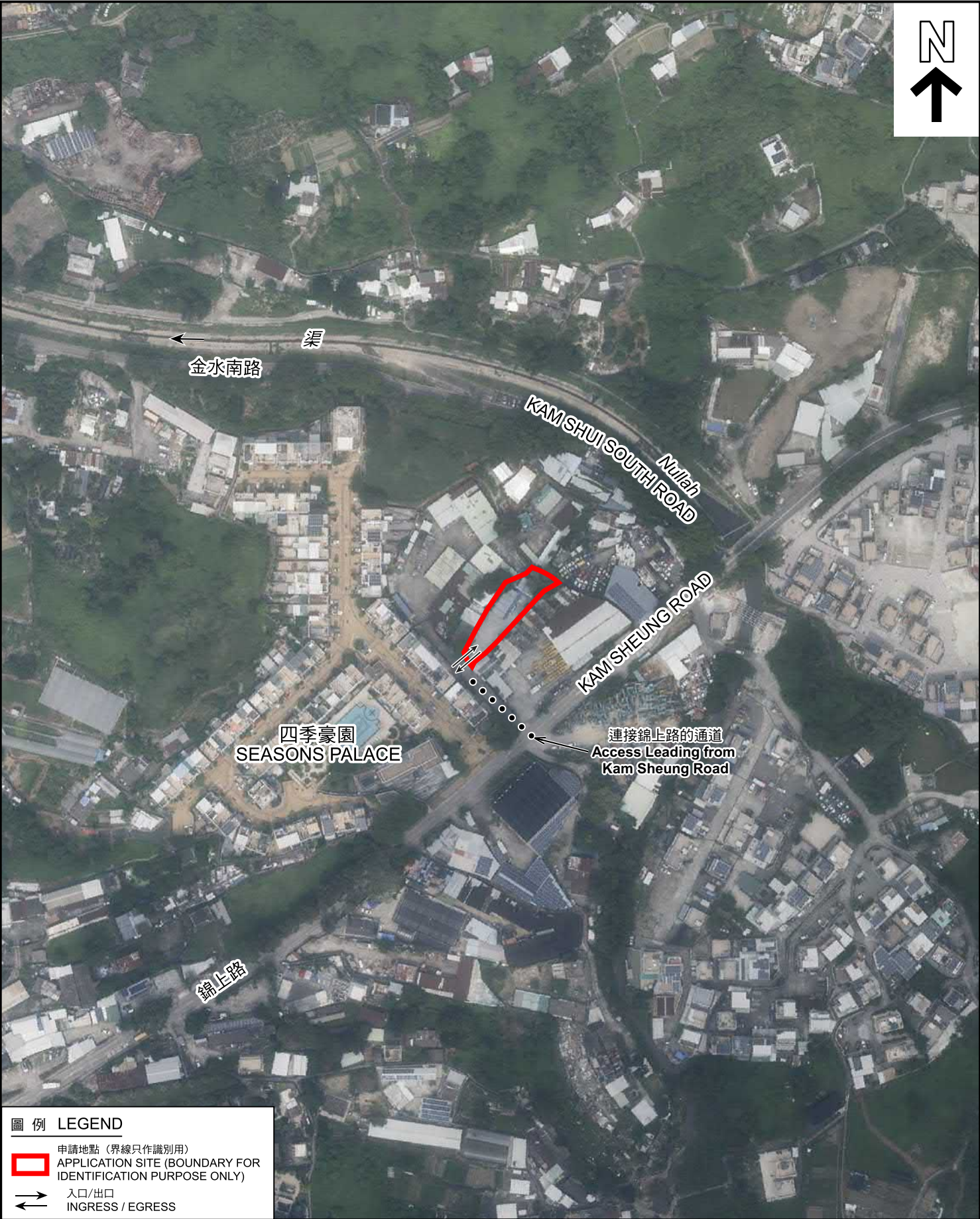
米 20 0 20 40 米
METRES

規劃署
PLANNING
DEPARTMENT



參考編號
REFERENCE No.
A/YL-KTS/1023

圖 PLAN
A-2



圖例 LEGEND

 申請地點 (界線只作識別用)
APPLICATION SITE (BOUNDARY FOR IDENTIFICATION PURPOSE ONLY)

 入口/出口
INGRESS / EGRESS

本摘要圖於2024年9月23日擬備，
所根據的資料為地政總署於2023年10月5日
拍得的航攝照片編號 E210224C
EXTRACT PLAN PREPARED ON 23.9.2024
BASED ON AERIAL PHOTO No.
E210224C TAKEN ON 5.10.2023
BY LANDS DEPARTMENT

航攝照片 AERIAL PHOTO

擬議臨時貨倉(危險品倉庫除外)連附屬設施(為期3年)及相關填土工程
新界元朗錦田丈量約份第106約地段第1165號(部分)
PROPOSED TEMPORARY WAREHOUSE (EXCLUDING DANGEROUS
GOODS GODOWN) WITH ANCILLARY FACILITIES
FOR A PERIOD OF 3 YEARS AND ASSOCIATED FILLING OF LAND
LOT 1165 (PART) IN D.D. 106, KAM TIN,
YUEN LONG, NEW TERRITORIES

規劃署 PLANNING DEPARTMENT		
參考編號 REFERENCE No. A/YL-KTS/1023	圖 PLAN A-3	

1



2



3



4



申請地點界線只作識別用 APPLICATION SITE BOUNDARY FOR IDENTIFICATION PURPOSE ONLY

實地照片 SITE PHOTOS

本圖於2024年9月24日擬備，所根據的資料為攝於2024年9月5日的實地照片
PLAN PREPARED ON 24.9.2024
BASED ON SITE PHOTOS
TAKEN ON 5.9.2024

擬議臨時貨倉(危險品倉庫除外)連附屬設施(為期3年)及相關填土工程
新界元朗錦田丈量約份第106約地段第1165號(部分)
PROPOSED TEMPORARY WAREHOUSE (EXCLUDING DANGEROUS
GOODS GODOWN) WITH ANCILLARY FACILITIES
FOR A PERIOD OF 3 YEARS AND ASSOCIATED FILLING OF LAND
LOT 1165 (PART) IN D.D. 106, KAM TIN,
YUEN LONG, NEW TERRITORIES

規劃署
PLANNING
DEPARTMENT



參考編號
REFERENCE No.
A/YL-KTS/1023

圖 PLAN
A-4