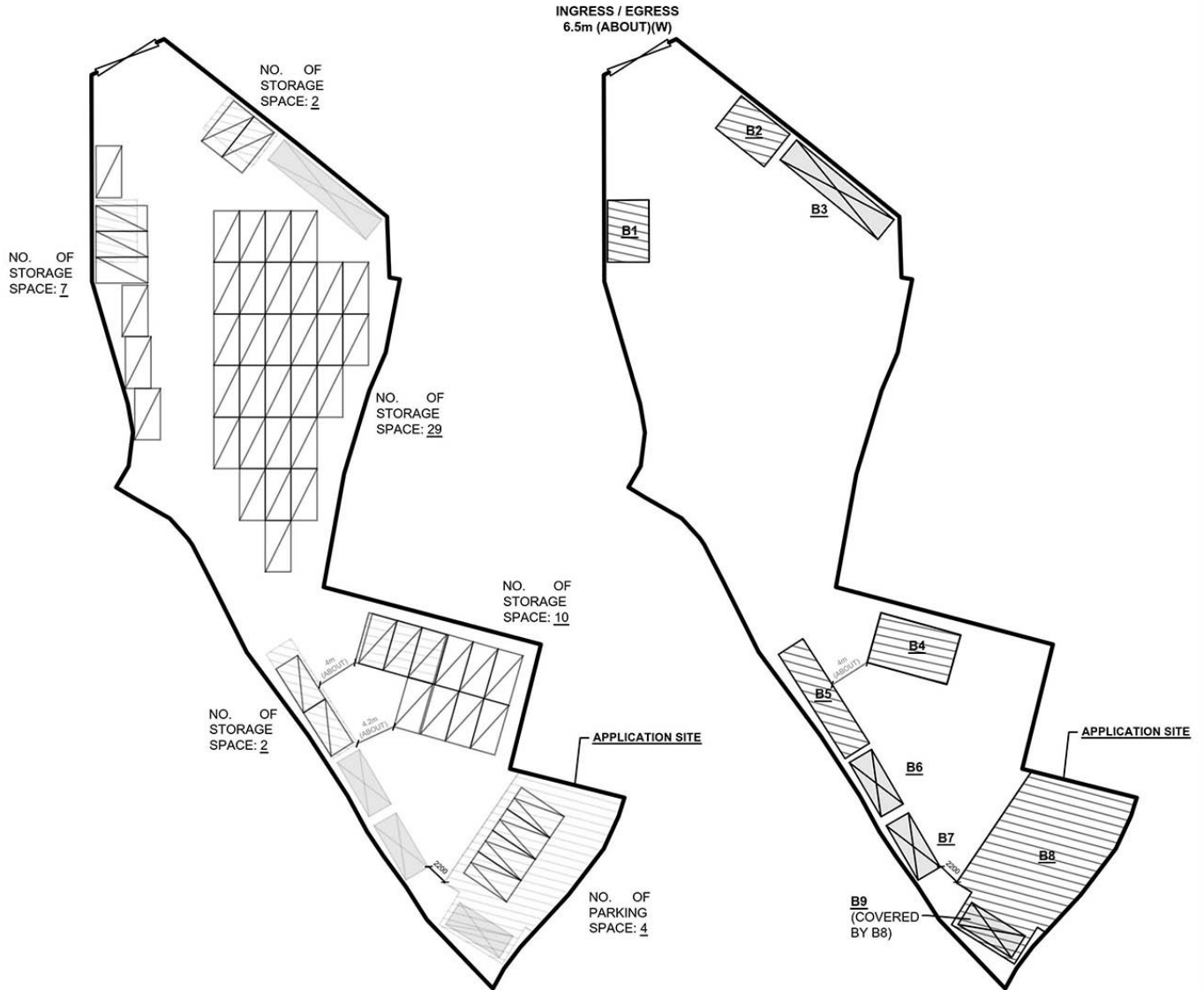


# MAJOR DEVELOPMENT PARAMETERS

APPLICATION SITE AREA	: 1,837 m <sup>2</sup>	(ABOUT)
COVERED AREA	: 363 m <sup>2</sup>	(ABOUT)
UNCOVERED AREA	: 1,474 m <sup>2</sup>	(ABOUT)
PLOT RATIO	: 0.2	(ABOUT)
SITE COVERAGE	: 20%	(ABOUT)
NO. OF STRUCTURE	: 9	
DOMESTIC GFA	: N/A	
NON-DOMESTIC GFA	: 393 m <sup>2</sup>	(ABOUT)
TOTAL GFA	: 393 m <sup>2</sup>	(ABOUT)
BUILDING HEIGHT	: 2.8 m - 6 m	(ABOUT)
NO. OF STOREY	: 1 - 2	

STRUCTURE	USE	COVERED AREA	GFA	BUILDING HEIGHT
B1	COVERED STORAGE SPACE	24m <sup>2</sup> (ABOUT)	24m <sup>2</sup> (ABOUT)	3m (ABOUT)(1-STOREY)
B2	COVERED STORAGE SPACE	24m <sup>2</sup> (ABOUT)	24m <sup>2</sup> (ABOUT)	3m (ABOUT)(1-STOREY)
B3	STORAGE OF TOOLS	30m <sup>2</sup> (ABOUT)	30m <sup>2</sup> (ABOUT)	2.8m (ABOUT)(1-STOREY)
B4	COVERED STORAGE SPACE	40m <sup>2</sup> (ABOUT)	40m <sup>2</sup> (ABOUT)	3m (ABOUT)(1-STOREY)
B5	COVERED STORAGE SPACE	34m <sup>2</sup> (ABOUT)	34m <sup>2</sup> (ABOUT)	3m (ABOUT)(1-STOREY)
B6	STORAGE OF TOOLS	15m <sup>2</sup> (ABOUT)	15m <sup>2</sup> (ABOUT)	2.8m (ABOUT)(1-STOREY)
B7	PORTABLE TOILET	15m <sup>2</sup> (ABOUT)	15m <sup>2</sup> (ABOUT)	2.8m (ABOUT)(1-STOREY)
B8	COVERED PARKING SPACE	181m <sup>2</sup> (ABOUT)	181m <sup>2</sup> (ABOUT)	6m (ABOUT)(1-STOREY)
B9	SITE OFFICE	COVERED BY B8	30m <sup>2</sup> (ABOUT)	5.6m (ABOUT)(2-STOREY)
TOTAL		363m <sup>2</sup> (ABOUT)	393m <sup>2</sup> (ABOUT)	



## PARKING PROVISION

NO. OF PRIVATE CAR PARKING SPACE	: 4
DIMENSION OF PARKING SPACE	: 2.5m (W) X 5m (L)

## STORAGE SPACE FOR VEHICLE

NO. OF STORAGE SPACE	: 50
TYPE OF STORAGE SPACE	: PRIVATE CAR

## LEGEND

	APPLICATION SITE
	STRUCTURE (ENCLOSED)
	STRUCTURE (CANOPY)
	PARKING SPACE (PC)
	STORAGE SPACE FOR VEHICLE
	INGRESS / EGRESS

PLANNING CONSULTANT



PROJECT

PROPOSED TEMPORARY OPEN STORAGE OF VEHICLES FOR SALE (INCLUDING NEW/USED VEHICLES) FOR A PERIOD OF 3 YEARS

ADDRESS

LOTS 512 RP (PART) AND 515 (PART) IN D.D. 103 AND ADJOINING GOVERNMENT LAND, KAM TIN, YUEN LONG, NEW TERRITORIES

SCALE

1:600 @ A4

DRAWN BY

MN

DATE

18.10.2023

REVISED BY

DATE

TITLE

LAYOUT PLAN

DWG NO.

PLAN 4

VER.

001



(摘錄自申請人於 8. 10. 2024 呈交的申請書)  
(Extract from Applicant's  
Submission of 8.10.2024)

參考編號  
REFERENCE No.  
AYL-KTS/1035

繪圖  
DRAWING  
A - 1

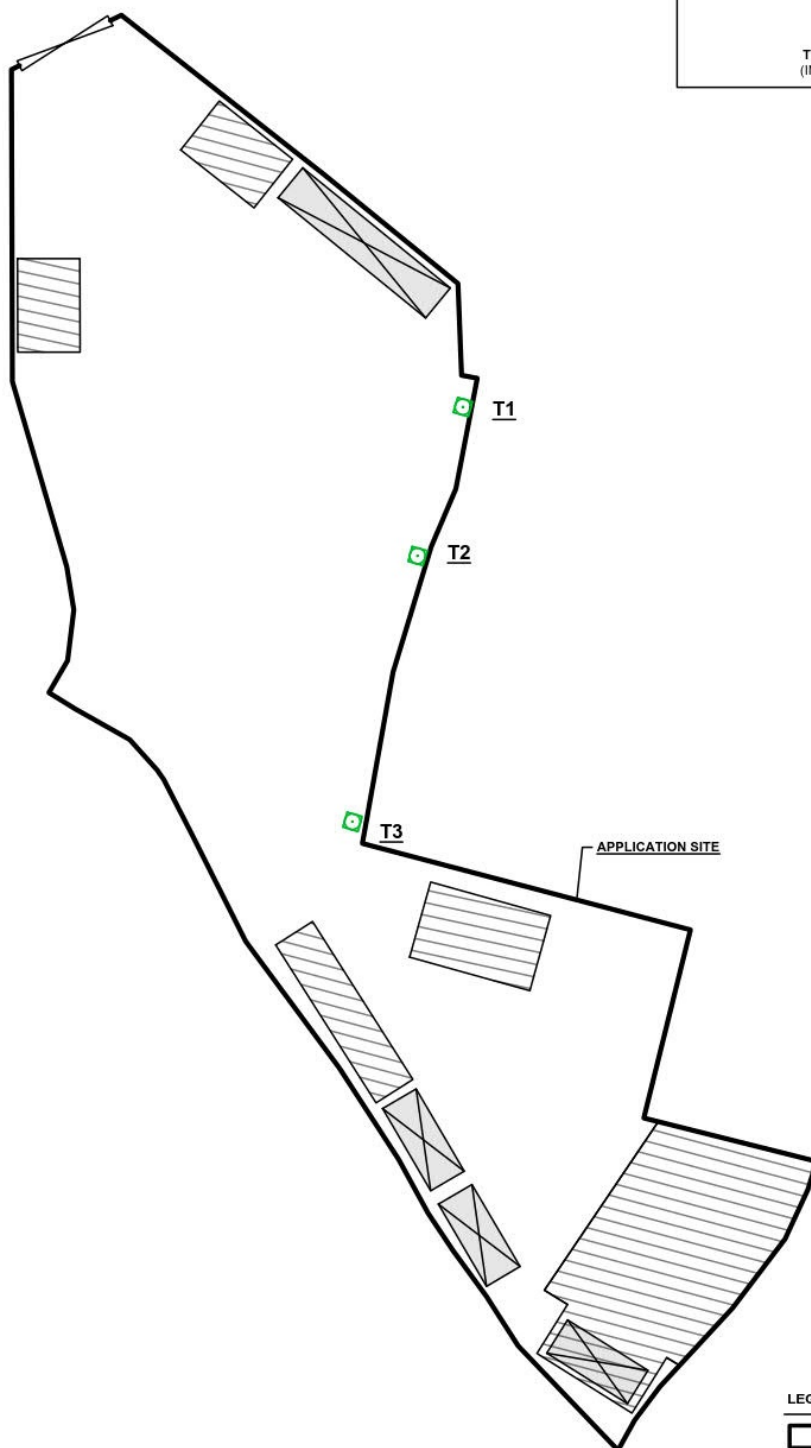
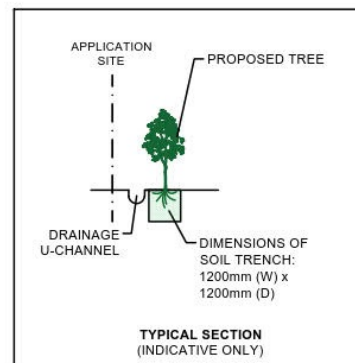
# LANDSCAPE PROPOSAL

APPLICATION SITE AREA : 1,837 m<sup>2</sup> (ABOUT)  
COVERED AREA : 363 m<sup>2</sup> (ABOUT)  
UNCOVERED AREA : 1,474 m<sup>2</sup> (ABOUT)

NO. OF EXISTING TREES : 3 (T1 TO T3)

TREE SPECIES : *FICUS HISPIDA* (T1)  
*FICUS BENJAMINA* (T2)  
*BAUHINIA SPP.* (T3)

NO. OF TREES TO BE PRESERVED : 3 (T1 TO T3)





## NOTES:

- THE APPLICANT WILL MAINTAIN TREES IN GOOD CONDITION DURING THE PLANNING APPROVAL PERIOD.
- THE APPLICANT WILL REPLACE TREES WHICH ARE DYING OR DEAD DURING THE PLANNING APPROVAL PERIOD.
- THE APPLICANT WILL PROVIDE ADEQUATE IRRIGATION FOR TREES.

## LEGEND

- APPLICATION SITE
- STRUCTURE (ENCLOSED)
- STRUCTURE (CANOPY)
- INGRESS / EGRESS
- EXISTING TREES

<div>PLANNING CONSULTANT</div> <div></div>	<div>PROJECT</div> <div>PROPOSED TEMPORARY OPEN STORAGE OF VEHICLES FOR SALE (INCLUDING NEW/USED VEHICLES) FOR A PERIOD OF 3 YEARS</div>	<div>ADDRESS</div> <div>LOTS 512 RP (PART) AND 515 (PART) IN D.D. 103 AND ADJOINING GOVERNMENT LAND, KAM TIN, YUEN LONG, NEW TERRITORIES</div>	<div>SCALE</div> <div>1:450 @ A4</div>		<div>TITLE</div> <div>LANDSCAPE PROPOSAL</div>		
			<div>DRAWN BY</div> <div>MN</div>	<div>DATE</div> <div>18.10.2023</div>			
			<div>REVISED BY</div> <div>LT</div>		<div>DATE</div> <div>22.12.2024</div>	<div>DWG NO.</div> <div>ANNEX II</div>	<div>VER.</div> <div>001</div>
							<div></div>

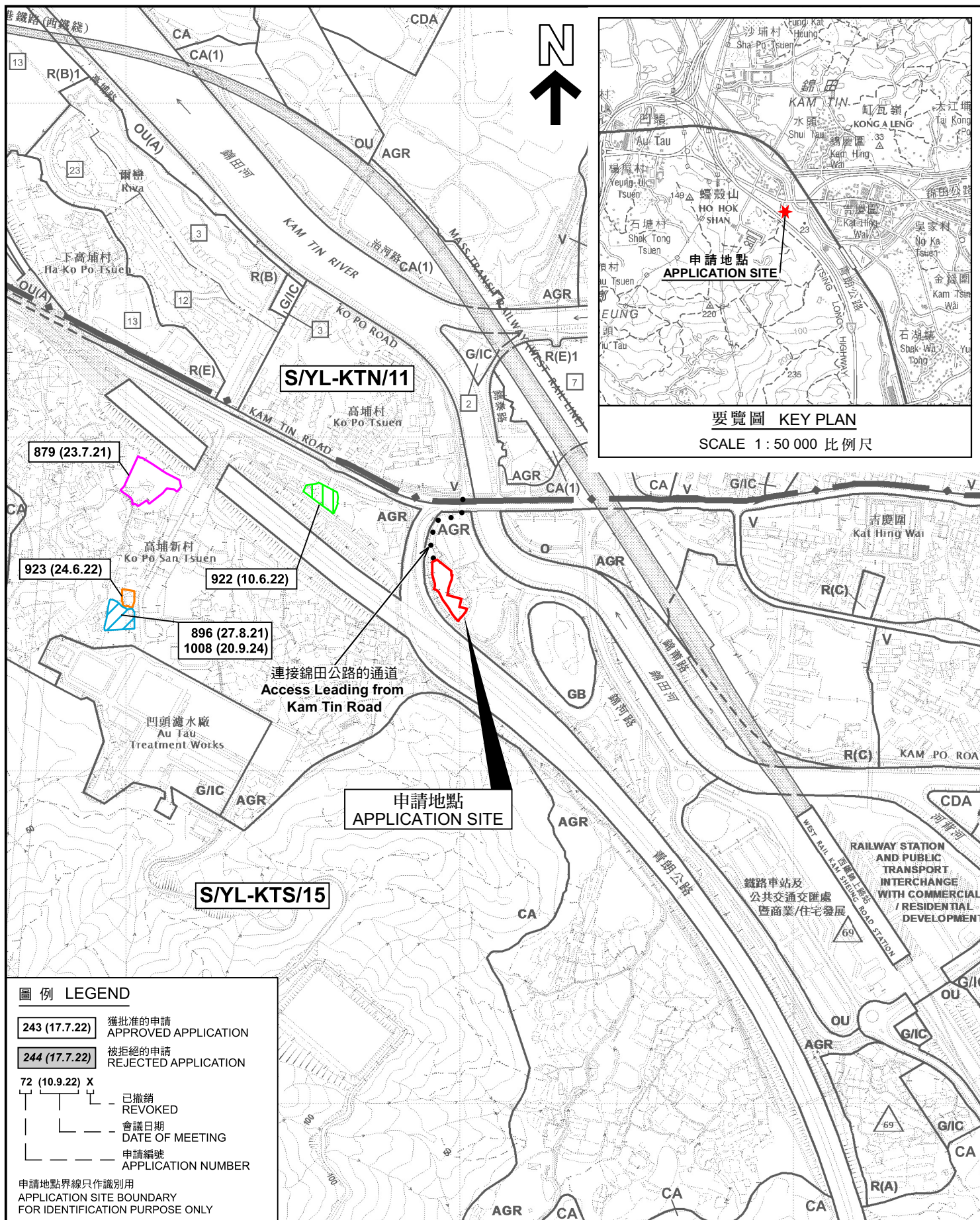


(摘錄自申請人於20.12.2024呈交的進一步資料)  
(Extract from Applicant's Further Information Submitted on 20.12.2024)

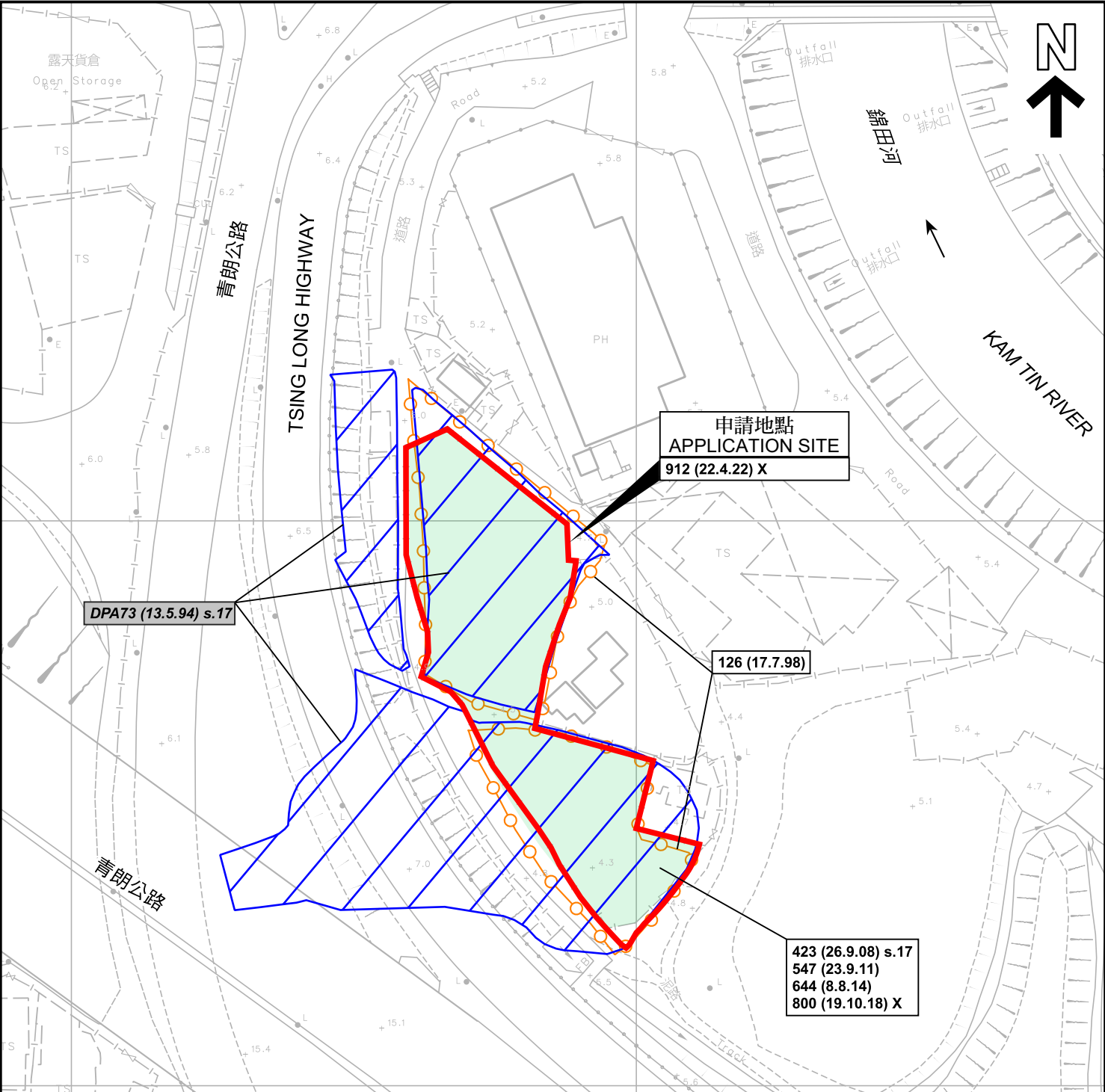
參考編號  
REFERENCE No.  
AYL-KTS/1035

繪圖  
DRAWING  
A - 2





本摘要圖於2025年1月23日擬備，  
所根據的資料為於2018年12月11日  
核准的分區計劃大綱圖編號 S/YL-KTS/15  
EXTRACT PLAN PREPARED ON 23.1.2025  
BASED ON OUTLINE ZONING PLAN No.  
S/YL-KTS/15 APPROVED ON 11.12.2018



**圖例 LEGEND**

243 (17.7.04)	獲批准的申請 APPROVED APPLICATION
244 (17.7.04)	被拒絕的申請 REJECTED APPLICATION
72 (10.9.99) X	已撤銷 REVOKED
—	會議日期 DATE OF MEETING
—	申請編號 APPLICATION NUMBER

申請地點界線只作識別用  
APPLICATION SITE BOUNDARY  
FOR IDENTIFICATION PURPOSE ONLY

**先前申請圖 PREVIOUS APPLICATION PLAN**

擬議臨時露天存放汽車作銷售用途(包括新舊車輛)(為期3年)  
新界元朗錦田丈量約份第103約

地段第512號餘段(部分)及第515號(部分)和毗連政府土地  
PROPOSED TEMPORARY OPEN STORAGE OF VEHICLES FOR SALE  
(INCLUDING NEW/USED VEHICLES) FOR A PERIOD OF 3 YEARS  
LOTS 512 RP (PART) AND 515 (PART) IN D.D. 103 AND ADJOINING  
GOVERNMENT LAND, KAM TIN, YUEN LONG, NEW TERRITORIES

SCALE 1 : 1 000 比例尺

米 20 0 20 40 米  
METRES

**規劃署  
PLANNING  
DEPARTMENT**

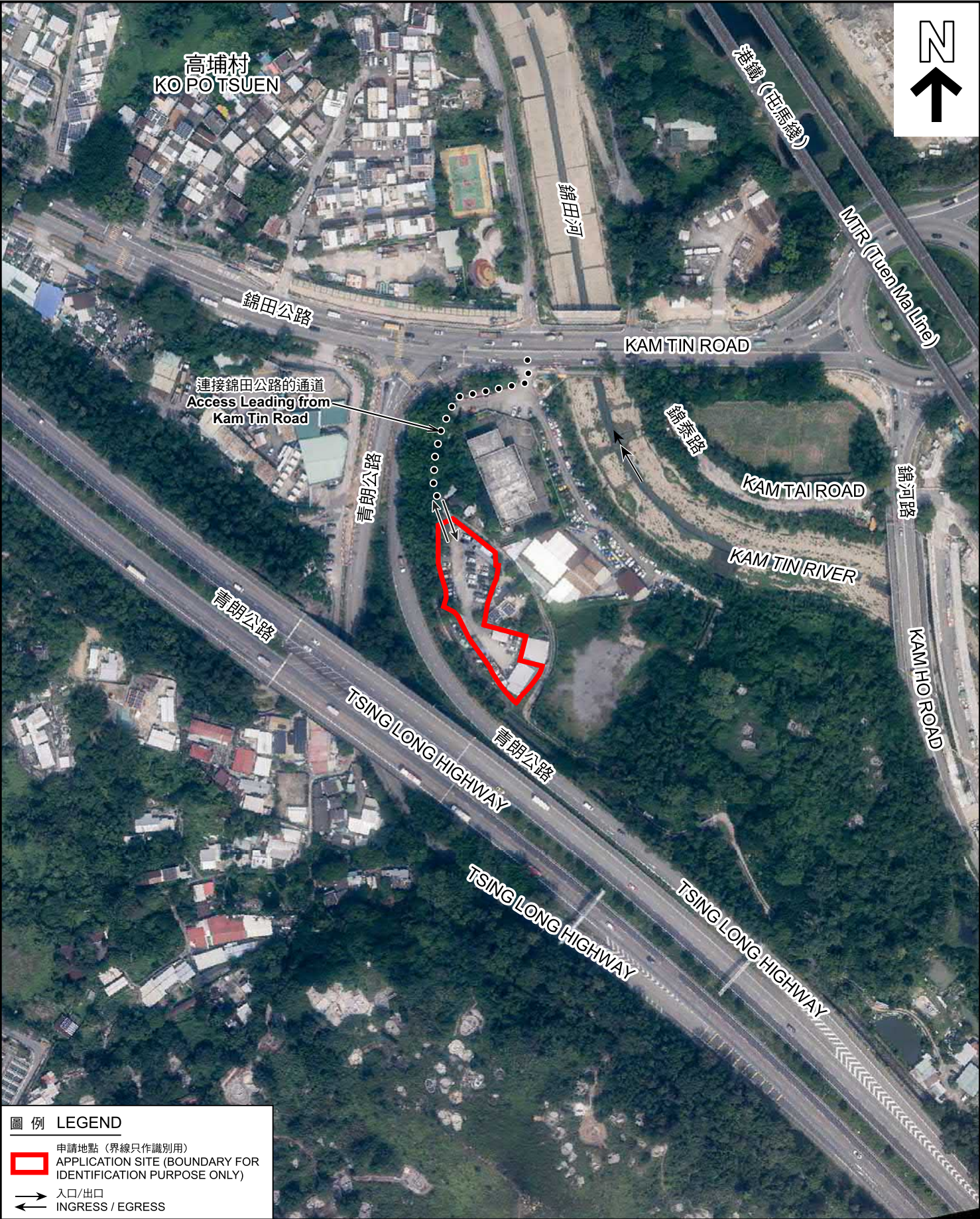
參考編號  
REFERENCE No.  
A/YL-KTS/1035

圖 PLAN  
A-1b









**圖例 LEGEND**

 申請地點 (界線只作識別用)  
APPLICATION SITE (BOUNDARY FOR IDENTIFICATION PURPOSE ONLY)

 入口/出口  
INGRESS / EGRESS

本摘要圖於2025年1月23日擬備，  
所根據的資料為地政總署於2023年10月5日  
拍得的航攝照片編號 E209941C  
EXTRACT PLAN PREPARED ON 23.1.2025  
BASED ON AERIAL PHOTO No.  
E209941C TAKEN ON 5.10.2023  
BY LANDS DEPARTMENT

**航攝照片 AERIAL PHOTO**

擬議臨時露天存放汽車作銷售用途 (包括新舊車輛) (為期3年)  
新界元朗錦田丈量約份第103約  
地段第512號餘段 (部分) 及第515號 (部分) 和毗連政府土地  
PROPOSED TEMPORARY OPEN STORAGE OF VEHICLES FOR SALE  
(INCLUDING NEW/USED VEHICLES) FOR A PERIOD OF 3 YEARS  
LOTS 512 RP (PART) AND 515 (PART) IN D.D. 103 AND ADJOINING  
GOVERNMENT LAND, KAM TIN, YUEN LONG, NEW TERRITORIES

<b>規劃署</b> <b>PLANNING</b> <b>DEPARTMENT</b>		
參考編號 REFERENCE No. A/YL-KTS/1035	圖 PLAN A-3	





申請地點界線只作識別用 APPLICATION SITE BOUNDARY FOR IDENTIFICATION PURPOSE ONLY

<p>本圖於2025年1月23日擬備，所根據的資料為攝於2024年10月25日的實地照片 PLAN PREPARED ON 23.1.2025 BASED ON SITE PHOTOS TAKEN ON 25.10.2024</p>	<p><b>實地照片 SITE PHOTOS</b></p> <p>擬議臨時露天存放汽車作銷售用途(包括新舊車輛)(為期3年) 新界元朗錦田丈量約份第103約 地段第512號餘段(部分)及第515號(部分)和毗連政府土地 PROPOSED TEMPORARY OPEN STORAGE OF VEHICLES FOR SALE (INCLUDING NEW/USED VEHICLES) FOR A PERIOD OF 3 YEARS LOTS 512 RP (PART) AND 515 (PART) IN D.D. 103 AND ADJOINING GOVERNMENT LAND, KAM TIN, YUEN LONG, NEW TERRITORIES</p>	<p><b>規劃署 PLANNING DEPARTMENT</b></p> <p>參考編號 REFERENCE No. A/YL-KTS/1035</p>	<p></p> <p>圖 PLAN A-4</p>
--	--	---	--