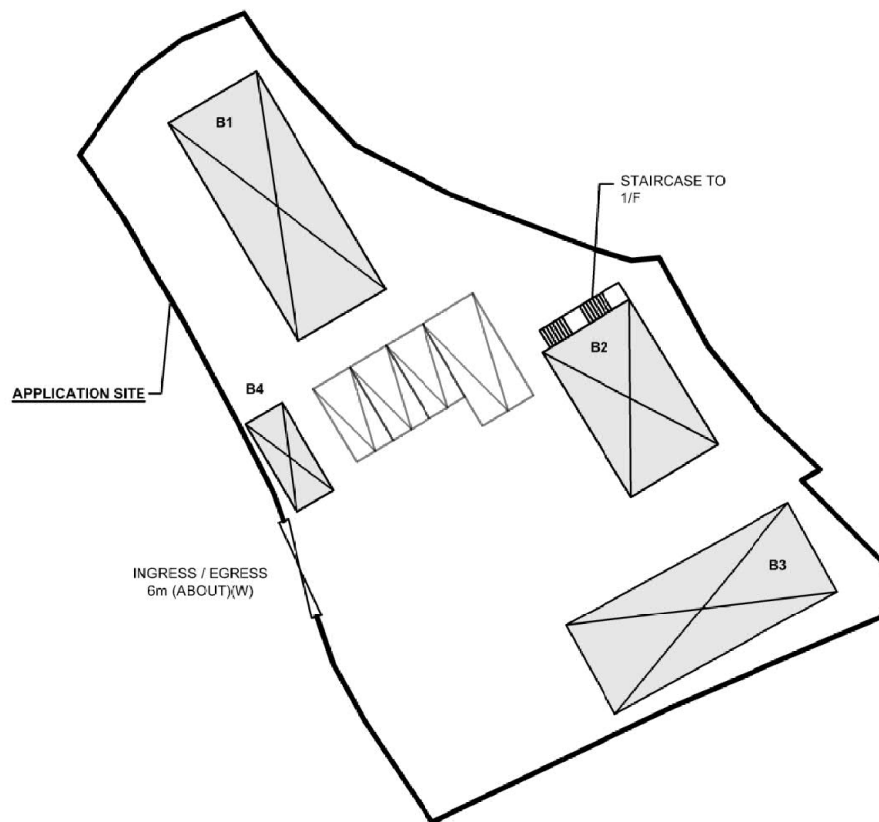
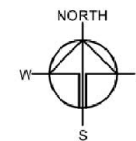


# DEVELOPMENT PARAMETERS OF THE APPLICATION SITE

APPLICATION SITE AREA	: 1,030m <sup>2</sup> (ABOUT)
COVERED AREA	: 255m <sup>2</sup> (ABOUT)
UNCOVERED AREA	: 775m <sup>2</sup> (ABOUT)
PLOT RATIO	: 0.3 (ABOUT)
SITE COVERAGE	: 25% (ABOUT)
NO. OF STRUCTURE	: 4
DOMESTIC GFA	: NOT APPLICABLE
NON-DOMESTIC GFA	: 315m <sup>2</sup> (ABOUT)
BUILDING HEIGHT	: 2.8m TO 7.2m (ABOUT)
NO. OF STOREY	: 1 TO 2

STRUCTURE	USE	COVERED AREA	GFA	BUILDING HEIGHT
B1	ANIMAL BOARDING ESTABLISHMENT (ABE)	90m <sup>2</sup> (ABOUT)	90m <sup>2</sup> (ABOUT)	4.2m (ABOUT)(1-STOREY)
B2	ABE AND SITE OFFICE	60m <sup>2</sup> (ABOUT)	120m <sup>2</sup> (ABOUT)	7.2m (ABOUT)(2-STOREY)
B3	ABE AND STORAGE OF PET GOODS	90m <sup>2</sup> (ABOUT)	90m <sup>2</sup> (ABOUT)	4.2m (ABOUT)(1-STOREY)
B4	FIRE SERVICE WATER TANK & PANEL	15m <sup>2</sup> (ABOUT)	15m <sup>2</sup> (ABOUT)	2.8m (ABOUT)(1-STOREY)
TOTAL		255m <sup>2</sup> (ABOUT)	315m <sup>2</sup> (ABOUT)	



## PARKING PROVISIONS

NO. OF PRIVATE CAR PARKING SPACE	: 3
DIMENSION OF PARKING SPACE	: 2.5m (W) X 5m (L)
NO. OF LUL SPACE FOR LIGHT GOODS VEHICLE	: 1
DIMENSION OF LUL SPACE	: 3.5m (W) X 7m (L)

## LEGEND

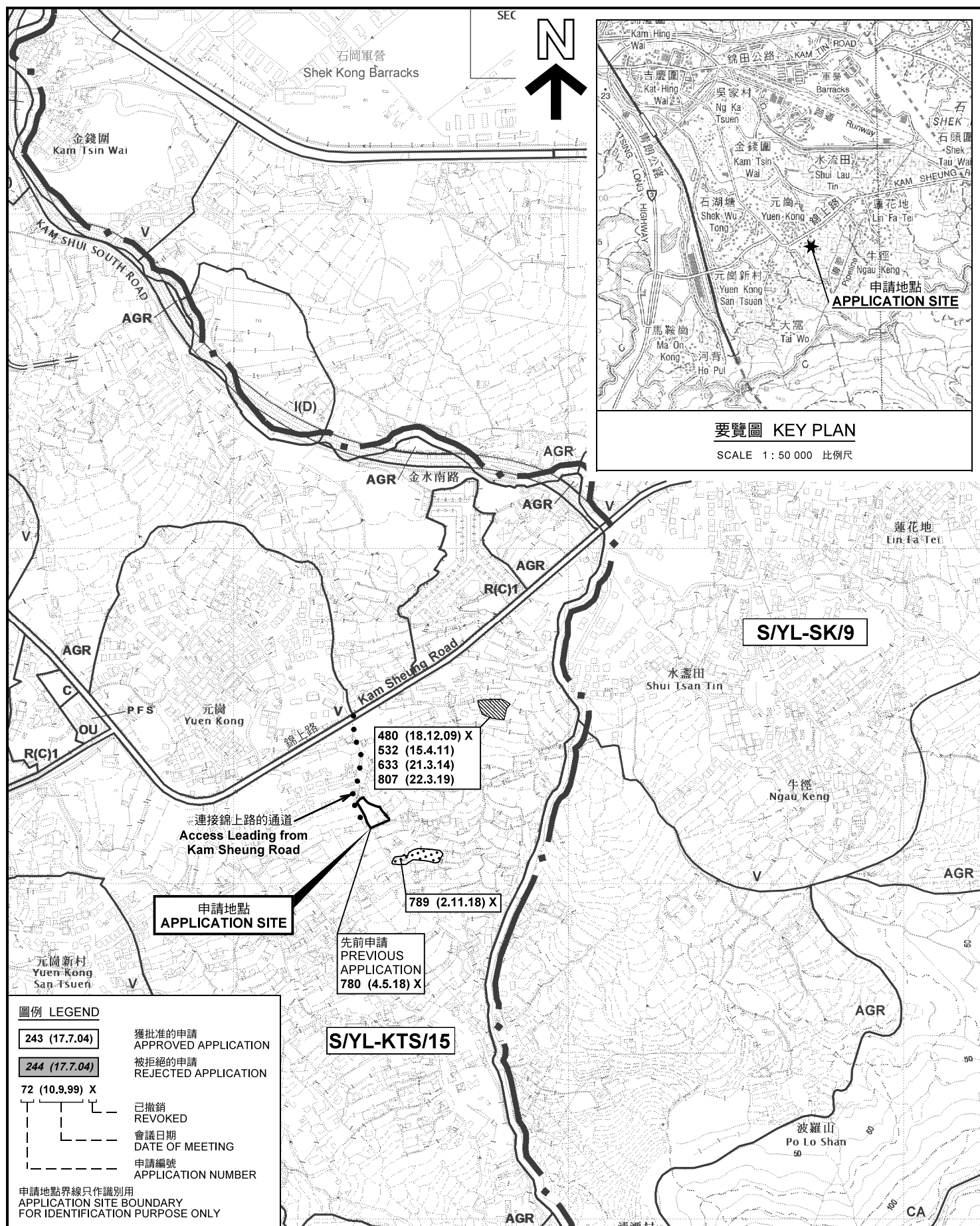
	STRUCTURE
	PARKING / LUL SPACE
	INGRESS / EGRESS

Drawing No.	Ver.
PLAN 1	01
Project	
PROPOSED TEMPORARY ANIMAL BOARDING ESTABLISHMENT FOR A PERIOD OF 5 YEARS	
LOTS 1703 (A-C) S.A, 1703 (A-C) S.B AND 1703 (A-C) S.C IN D.D. 105, PAT HEUNG, YUEN LONG	
Drawing Title	
LAYOUT PLAN	
Scale of A4	
1:400	
Drawn	Date
	27.11.2020
Revised	Date
	4.3.2021

(摘錄自申請人於5.3.2021呈交的進一步資料)  
(Extract from Applicant's Further Information Submitted on 5.3.2021)

參考編號  
REFERENCE No.  
A/YL-KTS/877

繪圖 DRAWING  
A-1



本摘要圖於2021年2月24日擬備，  
所根據的資料為於2018年12月11日  
核准的分區計劃大綱圖編號 S/YL-KTS/15  
EXTRACT PLAN PREPARED ON 24.2.2021  
BASED ON OUTLINE ZONING PLAN No.  
S/YL-KTS/15 APPROVED ON 11.12.2018

## 位置圖及同類申請 LOCATION PLAN WITH SIMILAR APPLICATIONS

擬議臨時動物寄養所（為期5年）  
 新界元朗八鄉丈量約份第106約地段第1703(A-C)號A分段、  
 第1703(A-C)號B分段及第1703(A-C)號C分段  
 PROPOSED TEMPORARY ANIMAL BOARDING  
 ESTABLISHMENT FOR A PERIOD OF 5 YEARS  
 LOTS 1703 (A-C) S.A, 1703 (A-C) S.B AND 1703 (A-C) S.C  
 IN D.D. 106, PAT HEUNG, YUEN LONG, NEW TERRITORIES

SCALE 1 : 7 500 比例尺

100 0 100 200 300

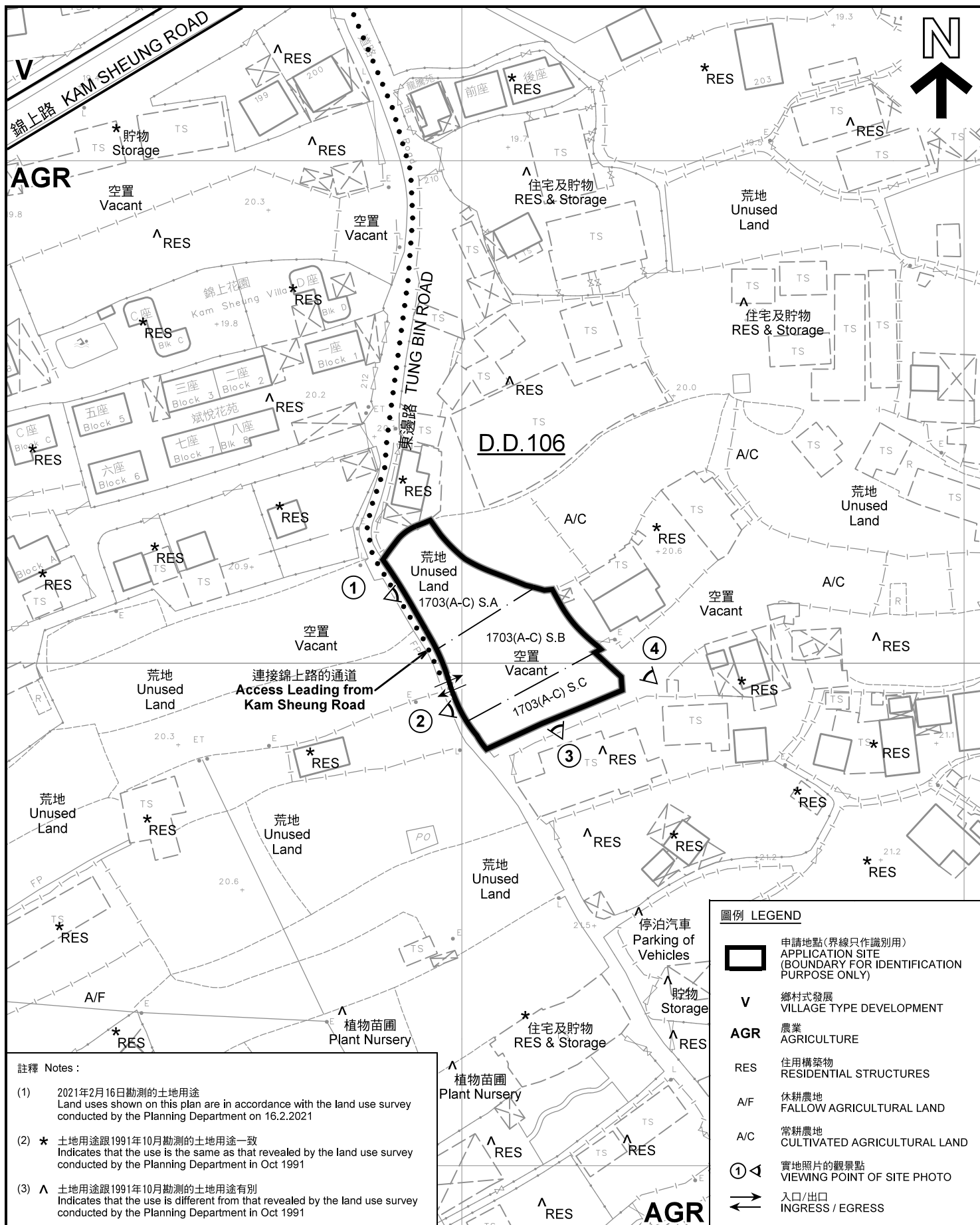
METRES METRES

規劃署  
PLANNING  
DEPARTMENT



參考編號  
REFERENCE No.  
A/YL-KTS/877

PLAN  
A-1



<p>本摘要圖於2021年2月24日擬備，所根據的資料為測量圖編號 6-NE-18C 及 6-NE-18D EXTRACT PLAN PREPARED ON 24.2.2021 BASED ON SURVEY SHEETS No. 6-NE-18C &amp; 6-NE-18D</p>	<p align="center"><b>平面圖 SITE PLAN</b></p> <p align="center">擬議臨時動物寄養所 (為期5年)</p> <p align="center">新界元朗八鄉丈量約份第106約地段第1703(A-C)號A分段、 第1703(A-C)號B分段及第1703(A-C)號C分段 PROPOSED TEMPORARY ANIMAL BOARDING ESTABLISHMENT FOR A PERIOD OF 5 YEARS LOTS 1703 (A-C) S.A, 1703 (A-C) S.B AND 1703 (A-C) S.C IN D.D. 106, PAT HEUNG, YUEN LONG, NEW TERRITORIES SCALE 1 : 1 000 比例尺</p> <p align="center">米 20 0 20 40 米 METRES</p>	<p align="center"><b>規劃署 PLANNING DEPARTMENT</b></p> <p align="center">參考編號 REFERENCE No. <b>A/YL-KTS/877</b></p> <p align="center">圖 PLAN <b>A-2</b></p>
---	---	---





圖例 LEGEND



申請地點(界線只作識別用)  
APPLICATION SITE  
(BOUNDARY FOR IDENTIFICATION  
PURPOSE ONLY)

本摘要圖於2021年2月24日擬備，所根據的資料為地政總署於2020年2月18日拍得的航攝照片編號 E088810C  
EXTRACT PLAN PREPARED ON 24.2.2021  
BASED ON AERIAL PHOTO No.  
E088810C TAKEN ON 18.2.2020  
BY LANDS DEPARTMENT

航攝照片 AERIAL PHOTO

擬議臨時動物寄養所(為期5年)  
新界元朗八鄉丈量約份第106約地段第1703(A-C)號A分段、  
第1703(A-C)號B分段及第1703(A-C)號C分段  
PROPOSED TEMPORARY ANIMAL BOARDING  
ESTABLISHMENT FOR A PERIOD OF 5 YEARS  
LOTS 1703 (A-C) S.A, 1703 (A-C) S.B AND 1703 (A-C) S.C  
IN D.D. 106, PAT HEUNG, YUEN LONG, NEW TERRITORIES

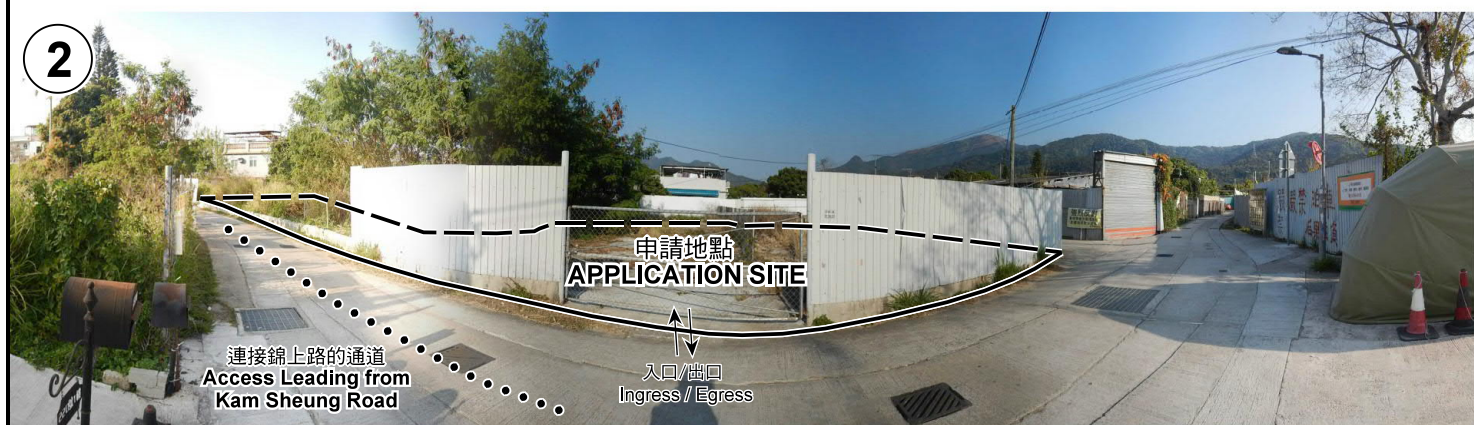
規劃署  
PLANNING  
DEPARTMENT



參考編號  
REFERENCE No.  
AYL-KTS/877

圖 PLAN  
A-3





申請地點界線只作識別用 APPLICATION SITE BOUNDARY FOR IDENTIFICATION PURPOSE ONLY

本圖於2021年2月24日擬備，所根據的資料為攝於2021年2月16日的實地照片  
PLAN PREPARED ON 24.2.2021  
BASED ON SITE PHOTOS  
TAKEN ON 16.2.2021

**實地照片 SITE PHOTOS**  
擬議臨時動物寄養所（為期5年）  
新界元朗八鄉丈量約份第106約地段第1703(A-C)號A分段、  
第1703(A-C)號B分段及第1703(A-C)號C分段  
PROPOSED TEMPORARY ANIMAL BOARDING  
ESTABLISHMENT FOR A PERIOD OF 5 YEARS  
LOTS 1703 (A-C) S.A, 1703 (A-C) S.B AND 1703 (A-C) S.C  
IN D.D. 106, PAT HEUNG, YUEN LONG, NEW TERRITORIES

**規劃署  
PLANNING  
DEPARTMENT**



參考編號  
REFERENCE No.  
A/YL-KTS/877

圖 PLAN  
A-4