

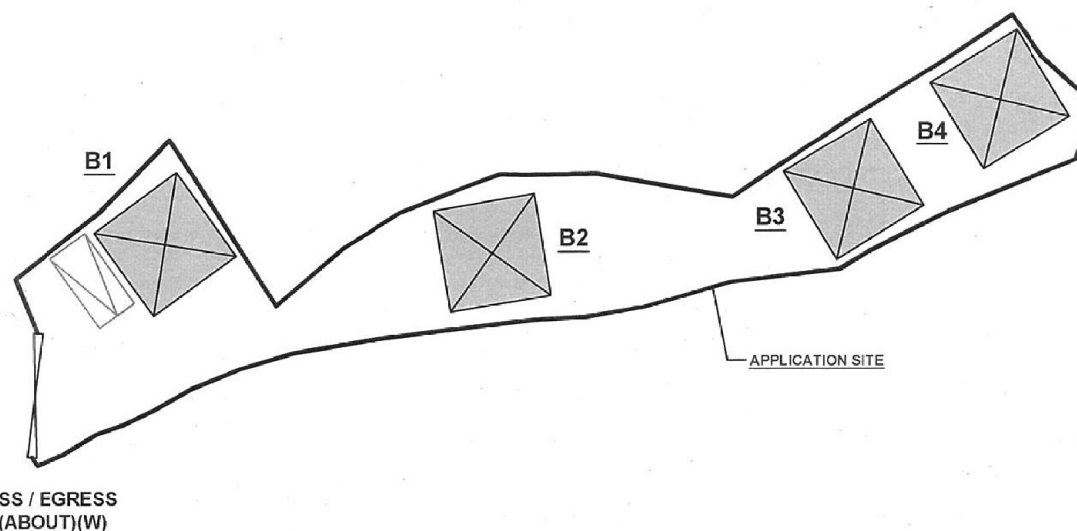
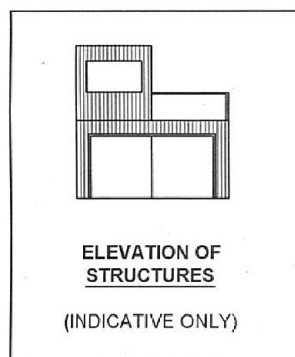
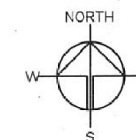
# DEVELOPMENT PARAMETERS OF THE APPLICATION SITE

APPLICATION SITE AREA : 512m<sup>2</sup> (ABOUT)  
COVERED AREA : 144m<sup>2</sup> (ABOUT)  
UNCOVERED AREA : 368m<sup>2</sup> (ABOUT)

PLOT RATIO : 0.4 (ABOUT)  
SITE COVERAGE : 28% (ABOUT)

NO. OF STRUCTURE : 4  
DOMESTIC GFA : NOT APPLICABLE  
NON-DOMESTIC GFA : 216m<sup>2</sup> (ABOUT)  
BUILDING HEIGHT : 6m (ABOUT)  
NO. OF STOREY : 2

STRUCTURE	USE	COVERED AREA	GFA	BUILDING HEIGHT
B1	SHOP AND SERVICES	36m <sup>2</sup> (ABOUT)	54m <sup>2</sup> (ABOUT)	6m (ABOUT)(2-STOREY)
B2	SHOP AND SERVICES	36m <sup>2</sup> (ABOUT)	54m <sup>2</sup> (ABOUT)	6m (ABOUT)(2-STOREY)
B3	SHOP AND SERVICES	36m <sup>2</sup> (ABOUT)	54m <sup>2</sup> (ABOUT)	6m (ABOUT)(2-STOREY)
B4	SHOP AND SERVICES	36m <sup>2</sup> (ABOUT)	54m <sup>2</sup> (ABOUT)	6m (ABOUT)(2-STOREY)
TOTAL		144m <sup>2</sup> (ABOUT)	216m <sup>2</sup> (ABOUT)	



INGRESS / EGRESS  
7.3m (ABOUT)(W)

## PARKING PROVISIONS

NO. OF PRIVATE CAR PARKING SPACE : 1  
DIMENSION OF PARKING SPACE : 2.5m (W) X 5m (L)

## LEGEND

- APPLICATION SITE
- STRUCTURE
- PARKING SPACE

Drawing No. **PLAN 1** Ver. **02**

Project  
PROPOSED TEMPORARY  
SHOP AND SERVICES FOR A  
PERIOD OF 5 YEARS

LOTS 1289 (PART) AND 1293  
(PART) IN D.D. 113, CHEUNG  
PO, KAM TIN, YUEN LONG,  
NEW TERRITORIES

Drawing Title  
LAYOUT PLAN

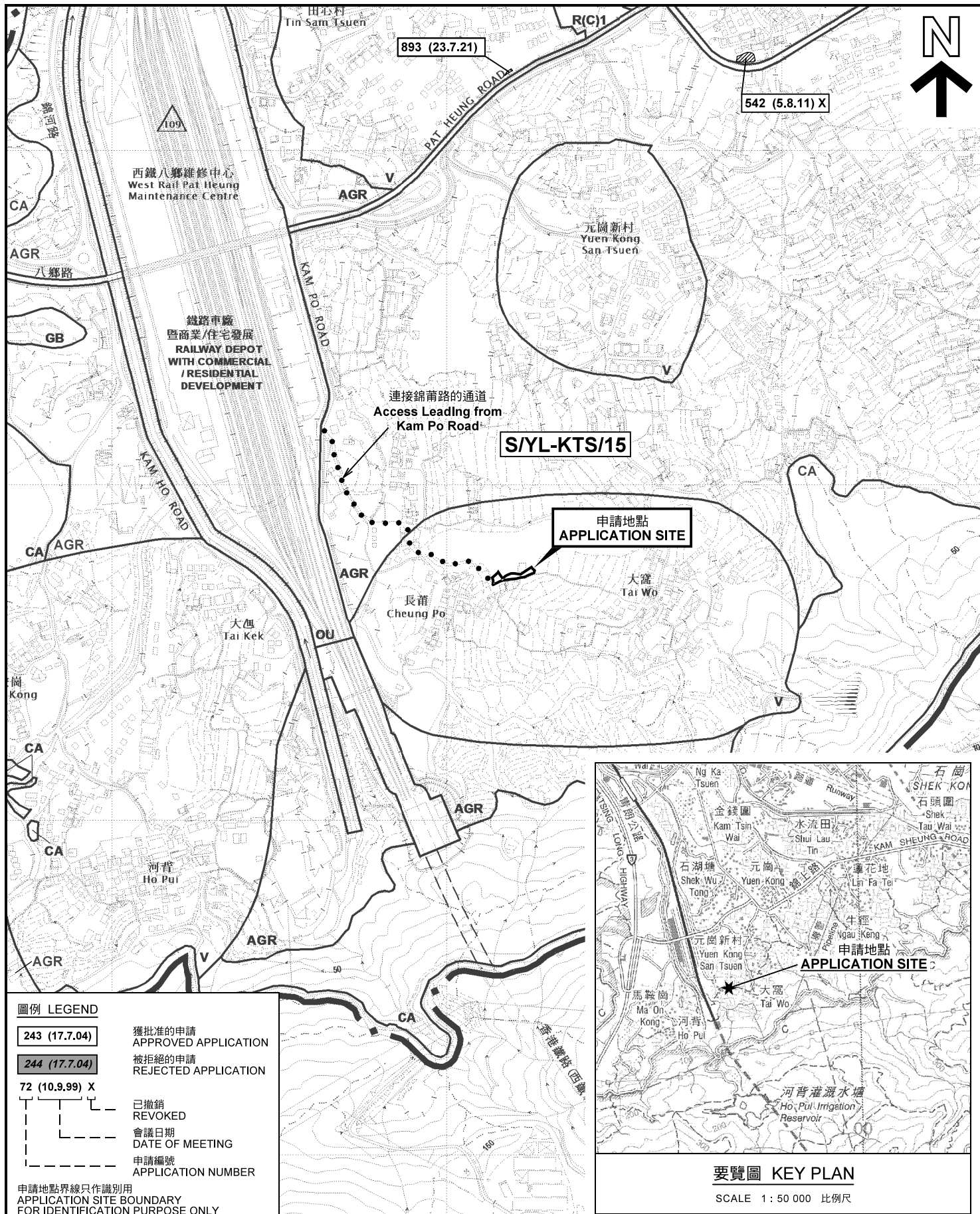
Scale of All  
**1:400**

Drawn	Date 23.7.2021
Revised	Date 14.9.2021

(摘錄自申請人於16. 9. 2021呈交的進一步資料)  
(Extract from Applicant's Further  
Information Submitted on 16.9.2021)

參考編號  
REFERENCE No.  
**A/YL-KTS/901**

繪圖 DRAWING  
**A-1**



圖例 LEGEND

243 (17.7.04)

獲批准的申請  
APPROVED APPLICATION

244 (17.7.04)

被拒絕的申請  
REJECTED APPLICATION

72 (10.9.99) X

已撤銷  
REVOKED

會議日期  
DATE OF MEETING

申請編號  
APPLICATION NUMBER

申請地點界線只作識別用  
APPLICATION SITE BOUNDARY  
FOR IDENTIFICATION PURPOSE ONLY

位置圖及同類申請 LOCATION PLAN WITH SIMILAR APPLICATIONS

擬議臨時商店及服務行業（為期5年）  
新界元朗錦田長莆丈量約份第113約  
地段第1289號（部分）及第1293號（部分）

PROPOSED TEMPORARY SHOP AND SERVICES  
FOR A PERIOD OF 5 YEARS

LOTS 1289 (PART) AND 1293 (PART) IN D.D. 113,  
CHEUNG PO, KAM TIN, YUEN LONG, NEW TERRITORIES

SCALE 1 : 7 500 比例尺

米 100 0 100 200 300 米  
METRES

規劃署  
PLANNING  
DEPARTMENT



參考編號  
REFERENCE No.  
A/YL-KTS/901

圖 PLAN  
A-1

本摘要圖於2021年9月17日擬備，  
所根據的資料為於2018年12月11日  
核准的分區計劃大綱圖編號 S/YL-KTS/15  
EXTRACT PLAN PREPARED ON 17.9.2021  
BASED ON OUTLINE ZONING PLAN No.  
S/YL-KTS/15 APPROVED ON 11.12.2018







圖例 LEGEND



申請地點(界線只作識別用)  
APPLICATION SITE  
(BOUNDARY FOR IDENTIFICATION  
PURPOSE ONLY)

本摘要圖於2021年9月17日擬備，所根據  
的資料為地政總署於2020年2月28日拍得  
的航攝照片編號 E088279C  
EXTRACT PLAN PREPARED ON 17.9.2021  
BASED ON AERIAL PHOTO No.  
E088279C TAKEN ON 28.2.2020  
BY LANDS DEPARTMENT

航攝照片 AERIAL PHOTO

擬議臨時商店及服務行業（為期5年）  
新界元朗錦田長莆丈量約份第113約  
地段第1289號（部分）及第1293號（部分）  
PROPOSED TEMPORARY SHOP AND SERVICES  
FOR A PERIOD OF 5 YEARS  
LOTS 1289 (PART) AND 1293 (PART) IN D.D. 113,  
CHEUNG PO, KAM TIN, YUEN LONG, NEW TERRITORIES

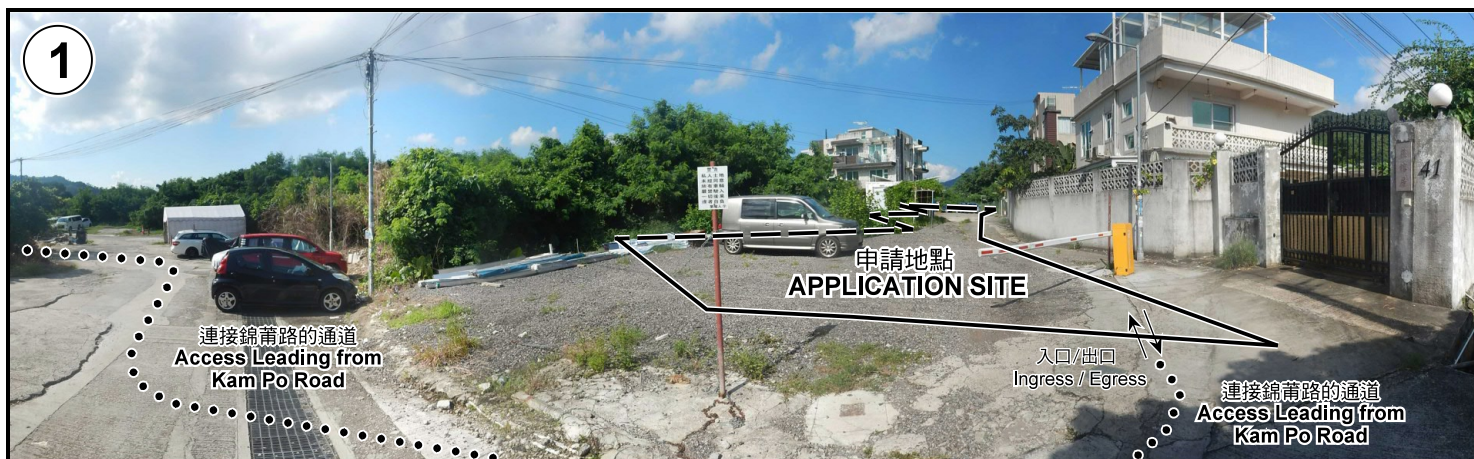
規 劃 署  
PLANNING  
DEPARTMENT



參考編號  
REFERENCE No.  
AYL-KTS/901

圖 PLAN  
A-3





申請地點界線只作識別用 APPLICATION SITE BOUNDARY FOR IDENTIFICATION PURPOSE ONLY

本圖於2021年9月17日擬備，所根據的資料為攝於2021年8月17日的實地照片  
PLAN PREPARED ON 17.9.2021  
BASED ON SITE PHOTOS  
TAKEN ON 17.8.2021

**實地照片 SITE PHOTOS**  
擬議臨時商店及服務行業（為期5年）  
新界元朗錦田長莆丈量約份第113約  
地段第1289號（部分）及第1293號（部分）  
PROPOSED TEMPORARY SHOP AND SERVICES  
FOR A PERIOD OF 5 YEARS  
LOTS 1289 (PART) AND 1293 (PART) IN D.D. 113,  
CHEUNG PO, KAM TIN, YUEN LONG, NEW TERRITORIES

**規劃署  
PLANNING  
DEPARTMENT**



參考編號  
REFERENCE No.  
AYL-KTS/901

圖 PLAN  
A-4