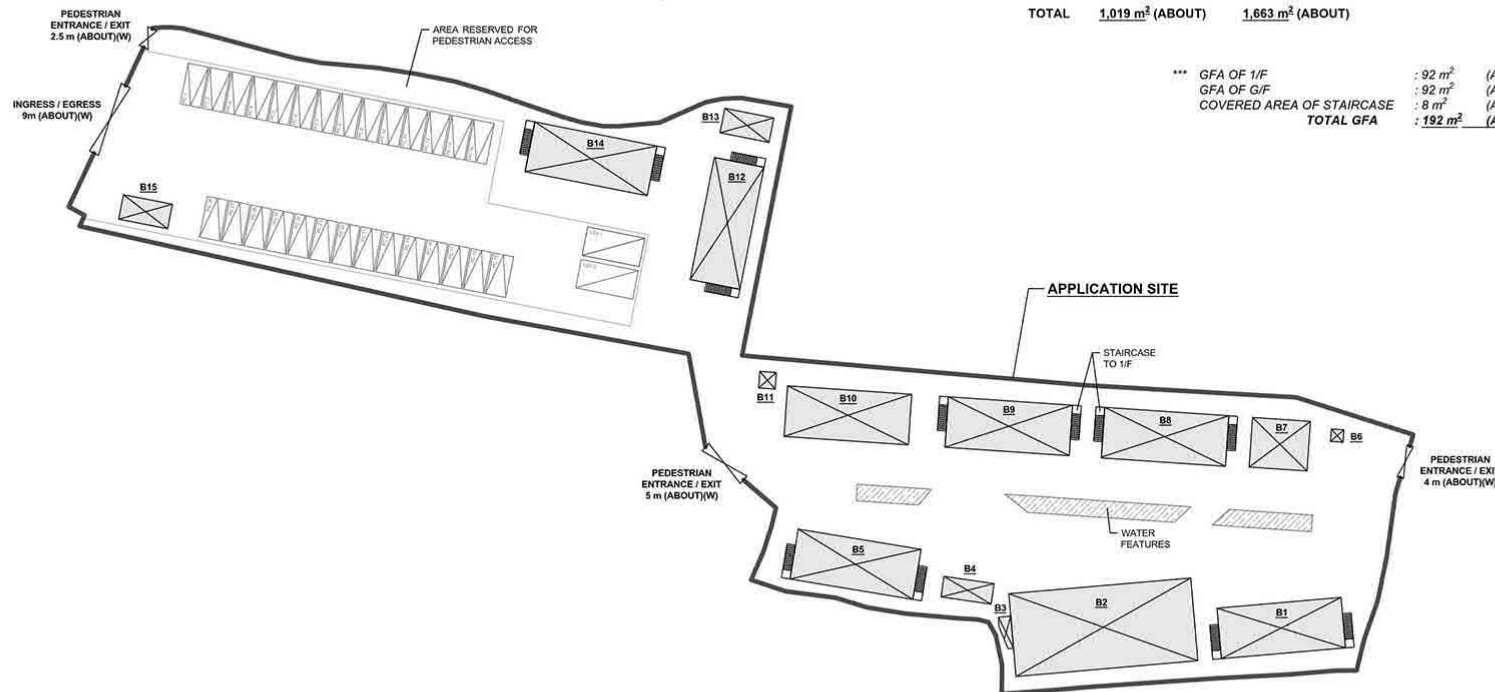


DEVELOPMENT PARAMETERS

APPLICATION SITE AREA	: 4,683 m ²	(ABOUT)
COVERED AREA	: 1,019 m ²	(ABOUT)
UNCOVERED AREA	: 3,664 m ²	(ABOUT)
PLOT RATIO	: 0.36	(ABOUT)
SITE COVERAGE	: 22 %	(ABOUT)
NO. OF STRUCTURE	: 15	
DOMESTIC GFA	: NOT APPLICABLE	
NON-DOMESTIC GFA	: 1,663 m ²	(ABOUT)
TOTAL GFA	: 1,663 m ²	(ABOUT)
BUILDING HEIGHT	: 3 m - 7.2 m	(ABOUT)
NO. OF STOREY	: 1 - 2	

STRUCTURE	USE	COVERED AREA	GFA	BUILDING HEIGHT
B1	SHOP AND SERVICES / EATING PLACE	100 m ² (ABOUT)	192* m ² (ABOUT)	7.2 m (ABOUT)(2-STOREY)
B2	PLACE OF RECREATION, SPORTS OF CULTURE / SHOP AND SERVICES	220 m ² (ABOUT)	220 m ² (ABOUT)	4.2 m (ABOUT)(1-STOREY)
B3	FIRE SERVICE WATER TANK AND PANEL	7 m ² (ABOUT)	7 m ² (ABOUT)	3 m (ABOUT)(1-STOREY)
B4	WASHROOM	15 m ² (ABOUT)	15 m ² (ABOUT)	3.5 m (ABOUT)(1-STOREY)
B5	SHOP AND SERVICES / EATING PLACE	100 m ² (ABOUT)	192* m ² (ABOUT)	7.2 m (ABOUT)(1-STOREY)
B6	GUARD ROOM	2 m ² (ABOUT)	2 m ² (ABOUT)	3 m (ABOUT)(1-STOREY)
B7	SHOP AND SERVICES / EATING PLACE	42 m ² (ABOUT)	42 m ² (ABOUT)	3.6 m (ABOUT)(1-STOREY)
B8	SHOP AND SERVICES / EATING PLACE	100 m ² (ABOUT)	192* m ² (ABOUT)	7.2 m (ABOUT)(2-STOREY)
B9	SHOP AND SERVICES / EATING PLACE	100 m ² (ABOUT)	192* m ² (ABOUT)	7.2 m (ABOUT)(2-STOREY)
B10	SHOP AND SERVICES	92 m ² (ABOUT)	184 m ² (ABOUT)	7.2 m (ABOUT)(2-STOREY)
B11	METER ROOM	5 m ² (ABOUT)	5 m ² (ABOUT)	3 m (ABOUT)(1-STOREY)
B12	SHOP AND SERVICES	100 m ² (ABOUT)	192* m ² (ABOUT)	7.2 m (ABOUT)(2-STOREY)
B13	METER ROOM AND STORE ROOM	18 m ² (ABOUT)	18 m ² (ABOUT)	3 m (ABOUT)(1-STOREY)
B14	SHOP AND SERVICES	100 m ² (ABOUT)	192* m ² (ABOUT)	7.2 m (ABOUT)(2-STOREY)
B15	CARETAKER OFFICE	18 m ² (ABOUT)	18 m ² (ABOUT)	3 m (ABOUT)(1-STOREY)
TOTAL		1,019 m ² (ABOUT)	1,663 m ² (ABOUT)	

*** GFA OF 1/F	: 92 m ²	(ABOUT)
GFA OF G/F	: 92 m ²	(ABOUT)
COVERED AREA OF STAIRCASE	: 8 m ²	(ABOUT)
TOTAL GFA	: 192 m ²	(ABOUT)

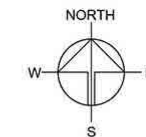


PARKING AND LOADING / UNLOADING PROVISIONS

NO. OF PRIVATE CAR PARKING SPACE	: 28
DIMENSIONS OF PARKING SPACE	: 5 m (L) X 2.5 m (W)
NO. OF LOADING / UNLOADING SPACE FOR LIGHT GOODS VEHICLE	: 2
DIMENSIONS OF LOADING / UNLOADING SPACE	: 7 m (L) X 3.5 m (W)

LEGEND

	APPLICATION SITE
	STRUCTURE
	PARKING SPACE (PC)
	LOADING / UNLOADING SPACE (LGV)
	INGRESS / EGRESS



PLANNING CONSULTANT



PROJECT

PROPOSED TEMPORARY SHOP AND SERVICES, EATING PLACE, PLACE OF RECREATION, SPORTS OR CULTURE AND PUBLIC VEHICLE PARK (EXCLUDING CONTAINER VEHICLE) WITH ANCILLARY FACILITIES FOR A PERIOD OF 5 YEARS

SITE LOCATION

VARIOUS LOTS IN D.D. 109, KAM TIN, YUEN LONG, NEW TERRITORIES

SCALE

1:600 @ A4

DRAWN BY: MN DATE: 31.10.2023

CHECKED BY: DATE:

APPROVED BY: DATE:

DWG. TITLE: LAYOUT PLAN

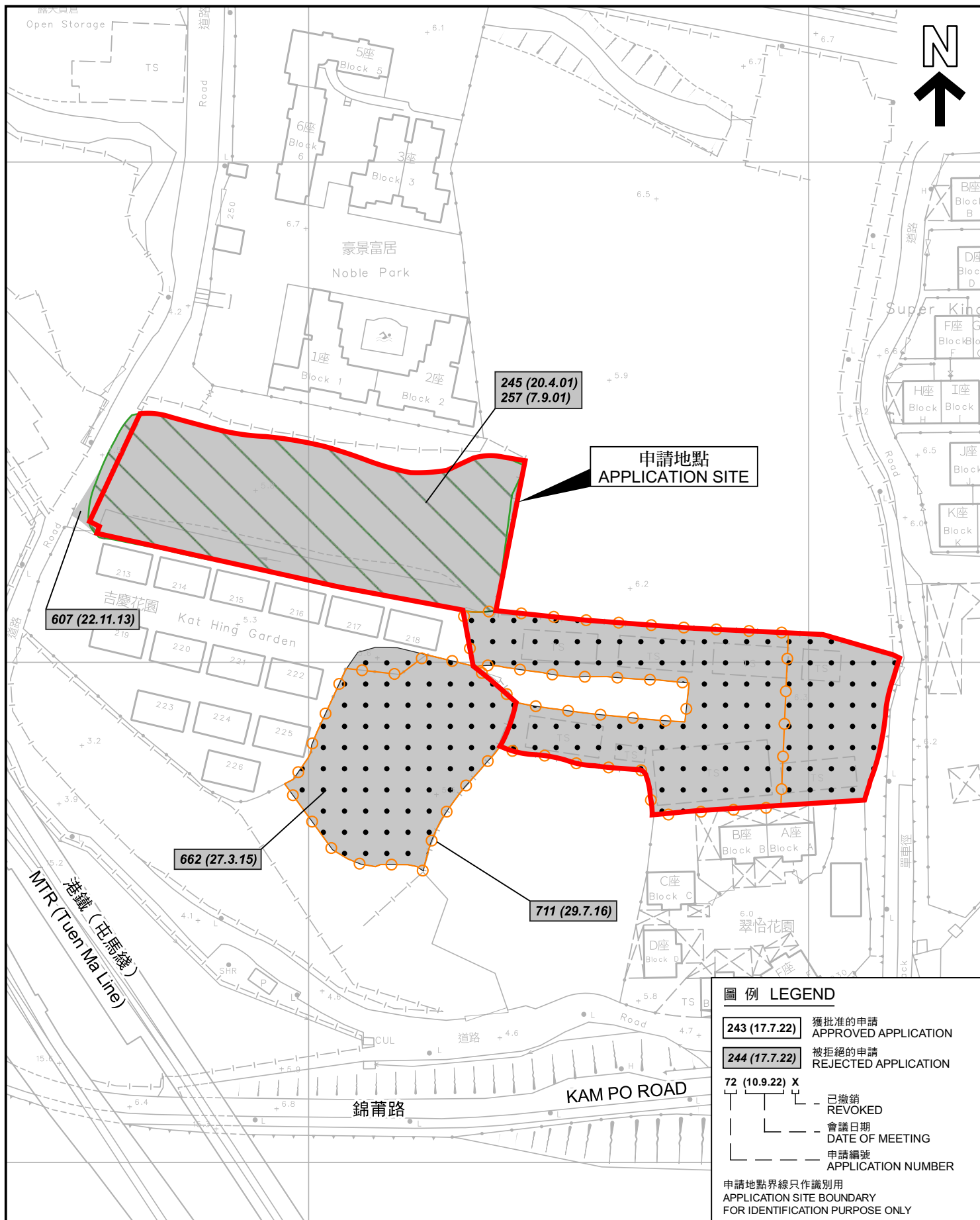
DWG NO: PLAN 1

VER: 003

(摘錄自申請人於1. 11. 2023呈交的進一步資料)
(Extract from Applicant's Further Information Submitted on 1.11.2023)

參考編號
REFERENCE No.
AYL-KTS/972

繪圖
DRAWING
A - 1



圖例 LEGEND

- 243 (17.7.22) 獲批准的申請
APPROVED APPLICATION
- 244 (17.7.22) 被拒絕的申請
REJECTED APPLICATION
- 72 (10.9.22) X
已撤銷
REVOKED
- 會議日期
DATE OF MEETING
- 申請編號
APPLICATION NUMBER

申請地點界線只作識別用
APPLICATION SITE BOUNDARY
FOR IDENTIFICATION PURPOSE ONLY

先前申請圖 PREVIOUS APPLICATION PLAN

擬議臨時商店及服務行業、食肆、康體文娛場所及
公眾停車場（貨櫃車除外）連附屬設施（為期5年）
元朗錦田丈量約份第109約多個地段

PROPOSED TEMPORARY SHOP AND SERVICES, EATING PLACE,
PLACE OF RECREATION, SPORT OR CULTURE
AND PUBLIC VEHICLE PARK (EXCLUDING CONTAINER VEHICLE)
WITH ANCILLARY FACILITIES FOR A PERIOD OF 5 YEARS
VARIOUS LOTS IN D.D. 109, KAM TIN, YUEN LONG
SCALE 1 : 1 000 比例尺

米 METRES 20 0 20 40 米 METRES

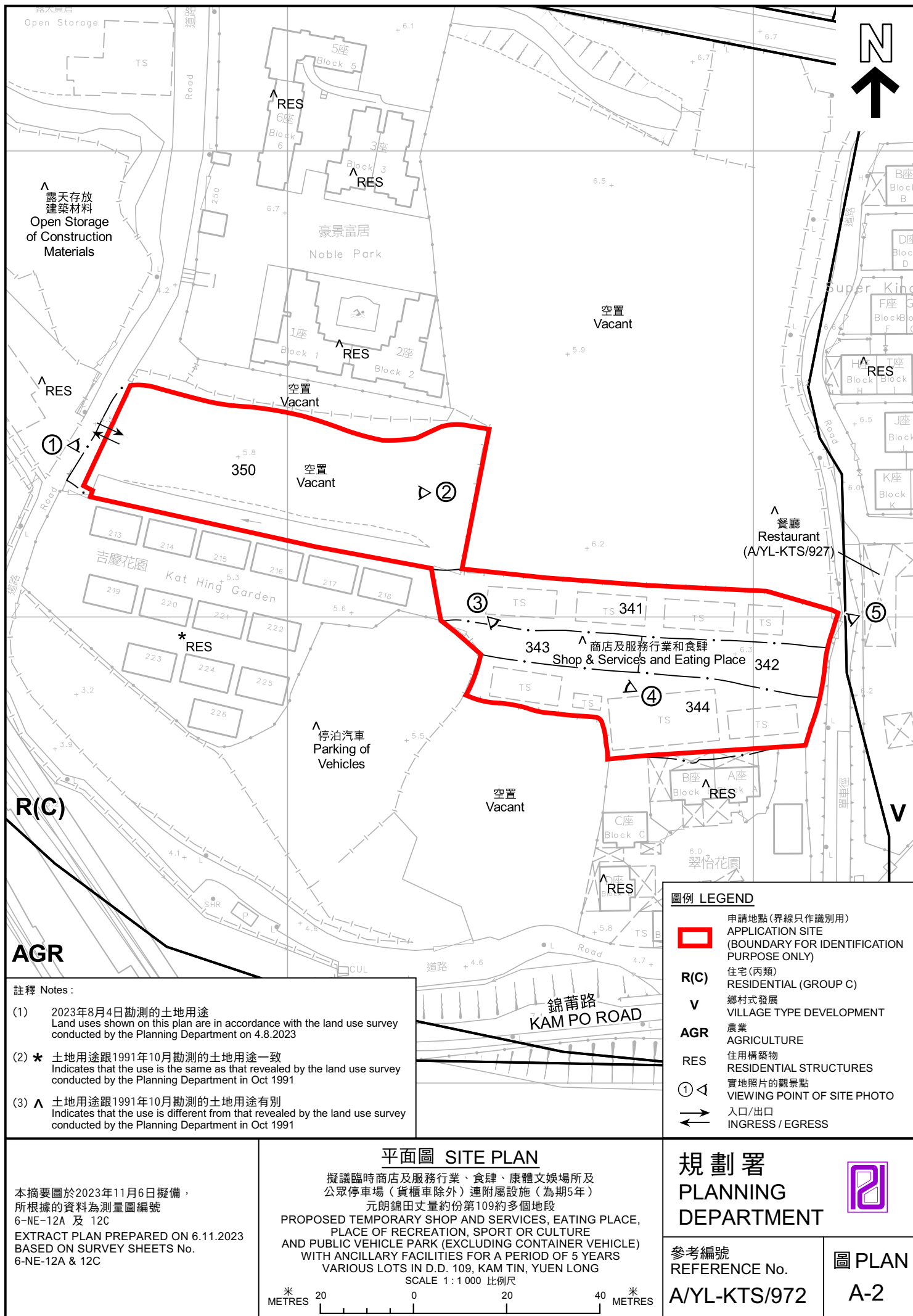
規劃署
PLANNING
DEPARTMENT

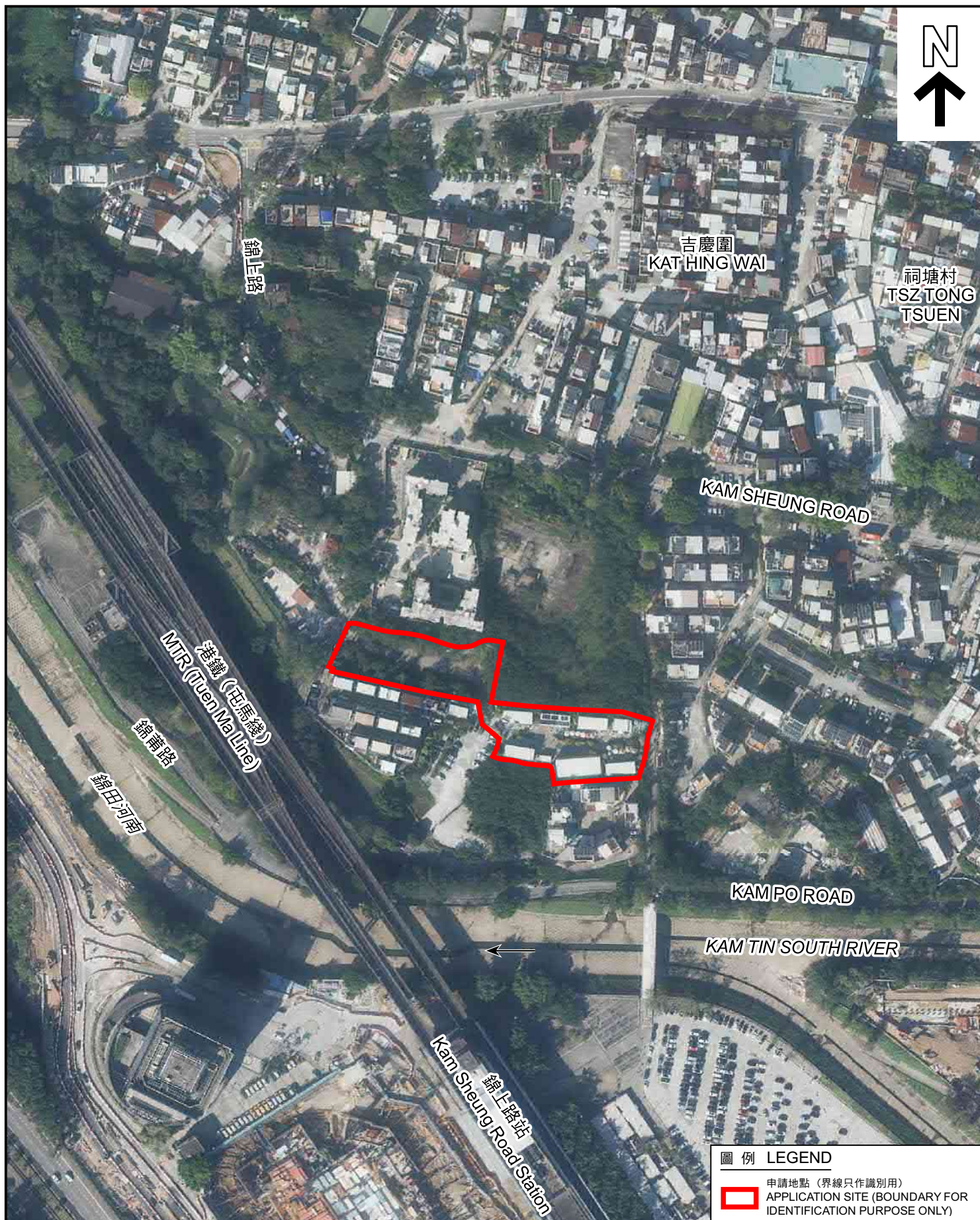


參考編號
REFERENCE No.
A/YL-KTS/972

圖 PLAN
A-1c

本摘要圖於2023年10月11日擬備，
所根據的資料為測量圖編號
6-NE-12A 及 12C
EXTRACT PLAN PREPARED ON 11.10.2023
BASED ON SURVEY SHEETS No.
6-NE-12A & 12C





圖例 LEGEND

申請地點 (界線只作識別用)
APPLICATION SITE (BOUNDARY FOR IDENTIFICATION PURPOSE ONLY)

航攝照片 AERIAL PHOTO

本摘要圖於2023年10月11日擬備，
所根據的資料為地政總署於2022年12月18日
拍得的航攝照片編號 E173764C 及 E173765C
EXTRACT PLAN PREPARED ON 11.10.2023
BASED ON AERIAL PHOTOS No.
E173764C & E173765C TAKEN ON
18.12.2022 BY LANDS DEPARTMENT

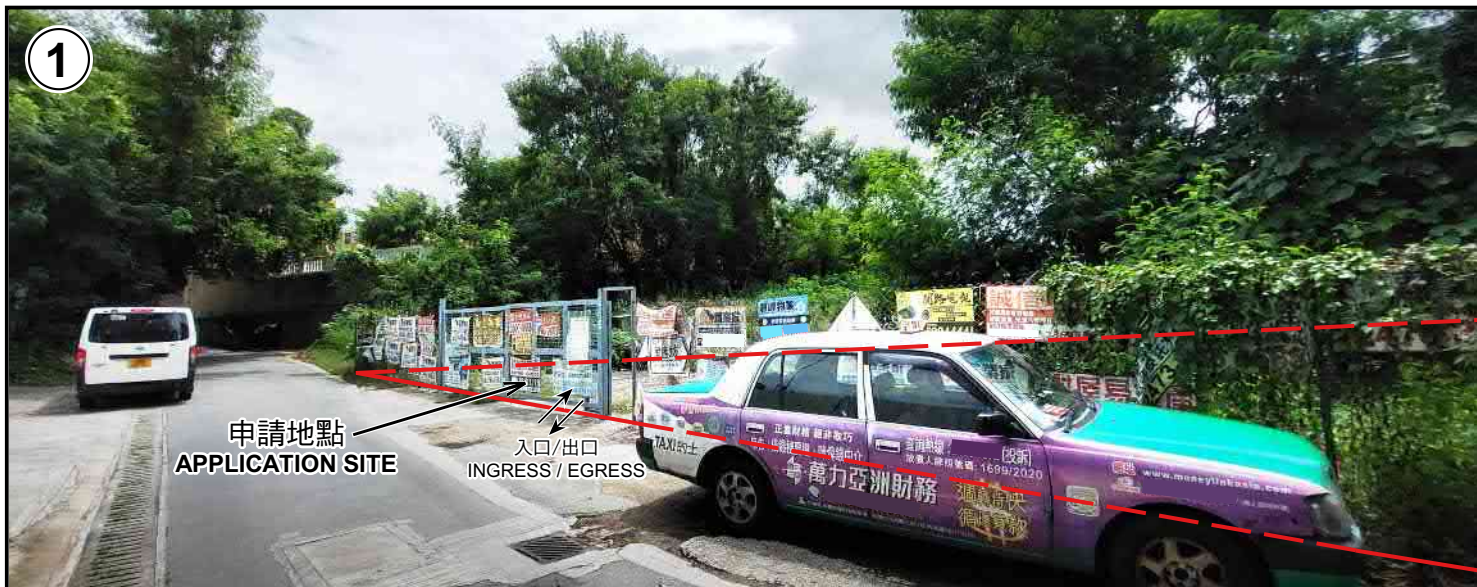
擬議臨時商店及服務行業、食肆、康體文娛場所及
公眾停車場 (貨櫃車除外) 連附屬設施 (為期5年)
元朗錦田丈量約份第109約多個地段
PROPOSED TEMPORARY SHOP AND SERVICES, EATING PLACE,
PLACE OF RECREATION, SPORT OR CULTURE
AND PUBLIC VEHICLE PARK (EXCLUDING CONTAINER VEHICLE)
WITH ANCILLARY FACILITIES FOR A PERIOD OF 5 YEARS
VARIOUS LOTS IN D.D. 109, KAM TIN, YUEN LONG

規劃署
PLANNING
DEPARTMENT



參考編號
REFERENCE No.
A/YL-KTS/972

圖 PLAN
A-3



申請地點界線只作識別用 APPLICATION SITE BOUNDARY FOR IDENTIFICATION PURPOSE ONLY

實地照片 SITE PHOTOS

擬議臨時商店及服務行業、食肆、康體文娛場所及公眾停車場（貨櫃車除外）連附屬設施（為期5年）

元朗錦田丈量約份第109約多個地段

PROPOSED TEMPORARY SHOP AND SERVICES, EATING PLACE, PLACE OF RECREATION, SPORT OR CULTURE AND PUBLIC VEHICLE PARK (EXCLUDING CONTAINER VEHICLE) WITH ANCILLARY FACILITIES FOR A PERIOD OF 5 YEARS
VARIOUS LOTS IN D.D. 109, KAM TIN, YUEN LONG

規劃署
PLANNING
DEPARTMENT



參考編號
REFERENCE No.
A/YL-KTS/972

圖 PLAN
A-4a

本圖於2023年10月13日擬備，所根據的資料為攝於2023年8月4日的實地照片
PLAN PREPARED ON 13.10.2023
BASED ON SITE PHOTOS
TAKEN ON 4.8.2023



申請地點界線只作識別用 APPLICATION SITE BOUNDARY FOR IDENTIFICATION PURPOSE ONLY

實地照片 SITE PHOTOS

擬議臨時商店及服務行業、食肆、康體文娛場所及公眾停車場（貨櫃車除外）連附屬設施（為期5年）

元朗錦田丈量約份第109約多個地段

PROPOSED TEMPORARY SHOP AND SERVICES, EATING PLACE, PLACE OF RECREATION, SPORT OR CULTURE AND PUBLIC VEHICLE PARK (EXCLUDING CONTAINER VEHICLE) WITH ANCILLARY FACILITIES FOR A PERIOD OF 5 YEARS
VARIOUS LOTS IN D.D. 109, KAM TIN, YUEN LONG

規劃署
PLANNING
DEPARTMENT



參考編號
REFERENCE No.
A/YL-KTS/972

圖 PLAN
A-4b

本圖於2023年10月11日擬備，所根據的資料為攝於2023年8月4日的實地照片
PLAN PREPARED ON 11.10.2023
BASED ON SITE PHOTOS
TAKEN ON 4.8.2023