

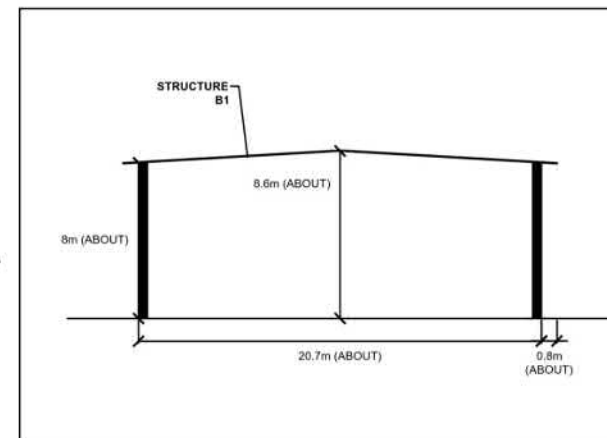
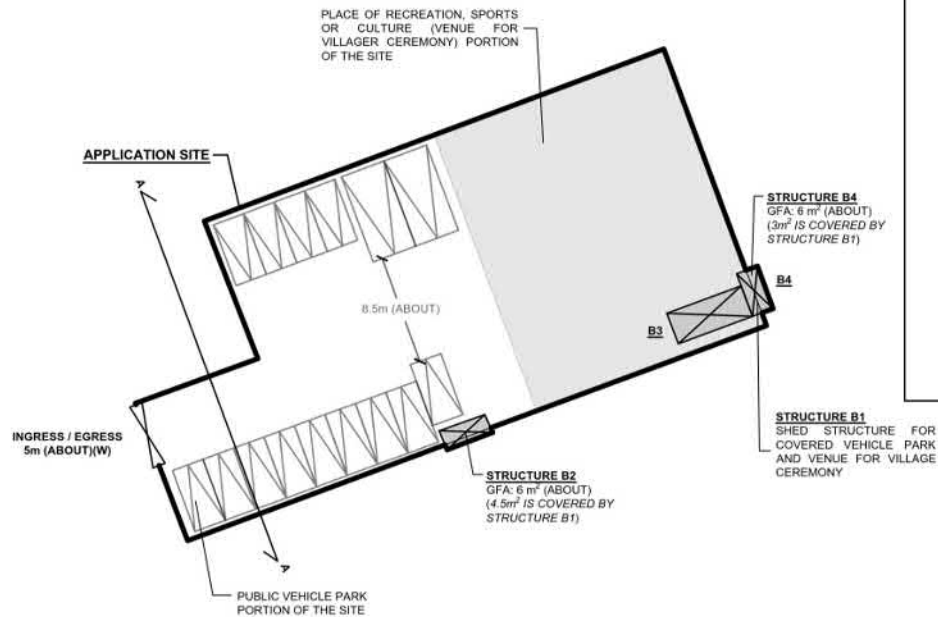
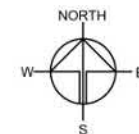
DEVELOPMENT PARAMETERS

APPLICATION SITE AREA	: 973.5 m ²	(ABOUT)
COVERED AREA	: 973.5 m ²	(ABOUT)
UNCOVERED AREA	: NOT APPLICABLE	
PLOT RATIO	: 1	(ABOUT)
SITE COVERAGE	: 100%	(ABOUT)
NO. OF STRUCTURE	: 4	
DOMESTIC GFA	: NOT APPLICABLE	
NON-DOMESTIC GFA	: 973.5 m ²	(ABOUT)
TOTAL FGA	: 973.5 m ²	(ABOUT)
BUILDING HEIGHT	: 2.8 m - 8.6 m	(ABOUT)
NO. OF STOREY	: 1	

STRUCTURE	USE	COVERED AREA	GFA	BUILDING HEIGHT
B1	STRUCTURE FOR RECREATIONAL AND CEREMONY ACTIVITIES*	969 m ² (ABOUT)	969 m ² (ABOUT)	8.6 m (ABOUT)(1-STOREY)
B2	STORAGE OF CHAIRS AND TABLE FOR CEREMONY USE	1.5 m ² (ABOUT) [#]	1.5 m ² (ABOUT) [#]	2.8 m (ABOUT)(1-STOREY)
B3	STORAGE OF CHAIRS AND TABLE FOR CEREMONY USE	COVERED BY B1	COVERED BY B1	2.8 m (ABOUT)(1-STOREY)
B4	METER ROOM	3 m ² (ABOUT) [#]	3 m ² (ABOUT) [#]	3 m (ABOUT)(1-STOREY)
TOTAL		973.5 m ² (ABOUT)	973.5 m ² (ABOUT)	

*STRUCTURE B1 IS A SHED STRUCTURE (NOT ENCLOSED)

#STRUCTURE B2 AND B4 ARE PARTIALLY COVERED BY STRUCTURE B1



ELEVATION OF STRUCTURE B1
(INDICATIVE ONLY)

PARKING PROVISIONS

NO. OF PRIVATE CAR PARKING SPACE	: 13
DIMENSION OF PARKING SPACE	: 2.5m (W) X 5m (L)
NO. OF LIGHT GOODS VEHICLE PARKING SPACE	: 2
DIMENSION OF PARKING SPACE	: 3.5m (W) X 7m (L)

LEGEND

	APPLICATION SITE
	STRUCTURE
	PARKING SPACE
	INGRESS / EGRESS

PLANNING CONSULTANT



PROJECT

PROPOSED TEMPORARY PUBLIC VEHICLE PARK (EXCLUDING CONTAINER VEHICLE) AND PLACE OF RECREATION, SPORTS OR CULTURE (VENUE FOR VILLAGER CEREMONY) FOR A PERIOD OF 3 YEARS

SITE LOCATION

VARIOUS LOTS IN D.D. 129 AND ADJOINING GOVERNMENT LAND, LAU FAU SHAN, YUEN LONG, NEW TERRITORIES

SCALE

1:500 @ A1

DRAWN BY: MN DATE: 6.2.2023

REVISED BY: OL DATE: 28.3.2023

APPROVED BY: DATE:

DWG. TITLE: LAYOUT PLAN

DWG. NO.: PLAN 1

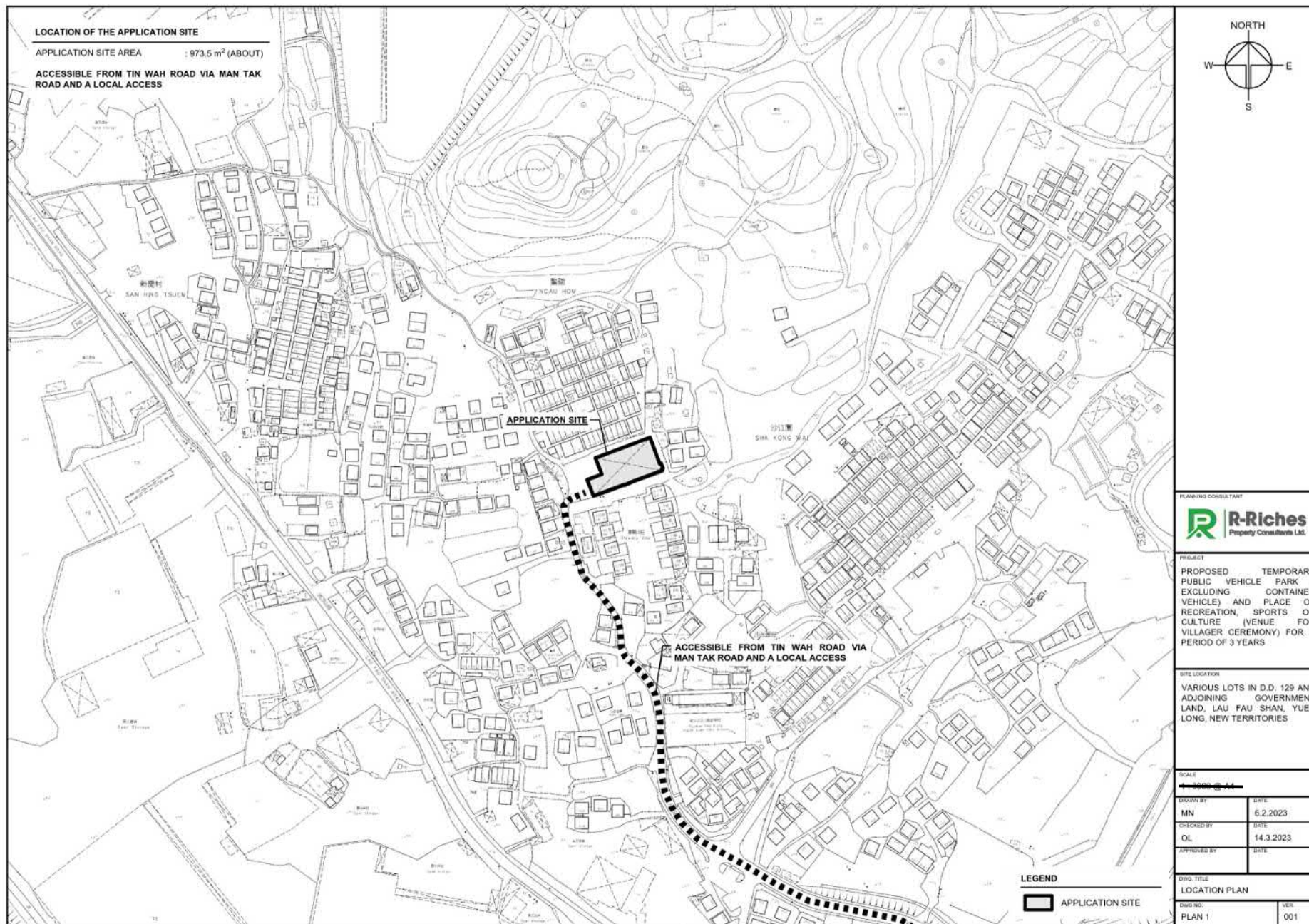
VER: 002

參考編號
REFERENCE No.
A/YL-LFS/464

繪圖 DRAWING
A-1

(摘錄自申請人於29. 3. 2023呈交的申請書)

(Extract from Applicant's
Submission of 29.3.2023)



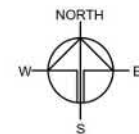
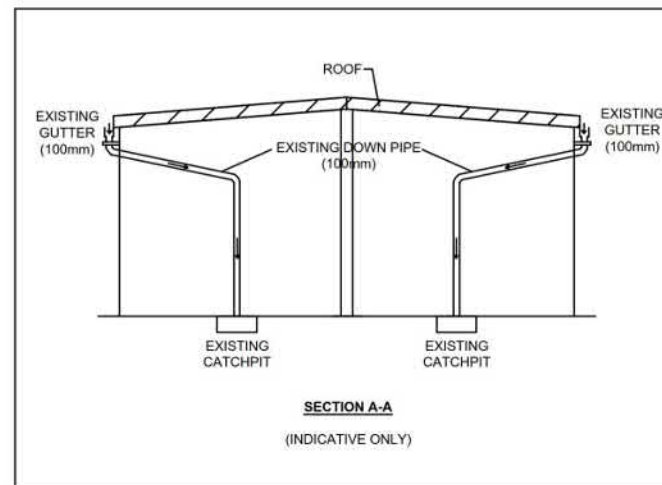
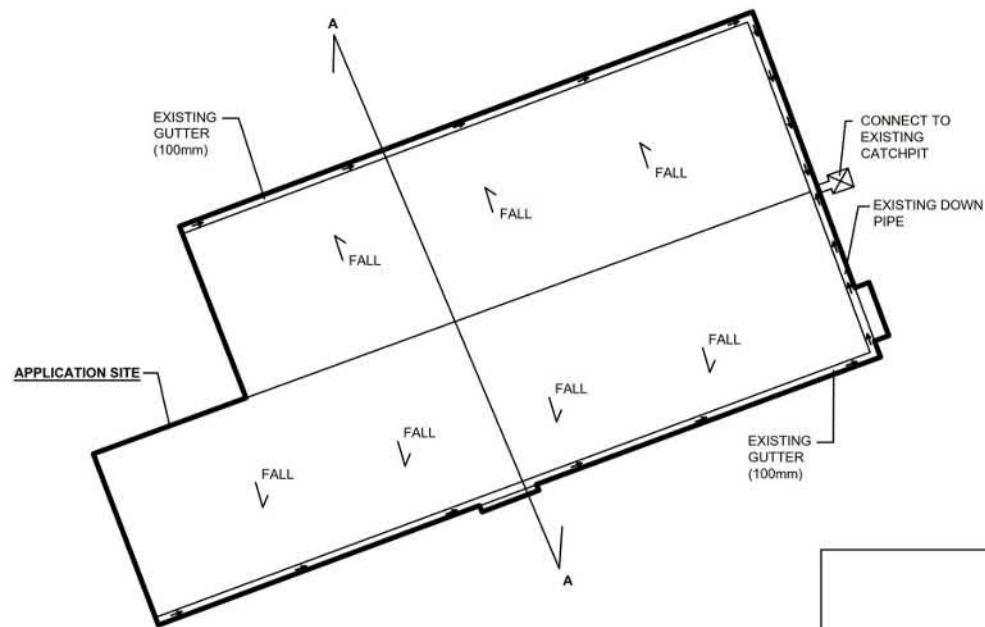
參考編號
 REFERENCE No.
 A/YL-LFS/464

繪圖 DRAWING
 A-2

(摘錄自申請人於28. 3. 2023呈交的申請書)
 (Extract from Applicant's
 Submission of 28.3.2023)

AS-BUILT DRAINAGE PLAN

APPLICATION SITE AREA : 973.5 m² (ABOUT)
COVERED AREA : 973.5 m² (ABOUT)
UNCOVERED AREA : NOT APPLICABLE



PLANNING CONSULTANT



PROJECT

PROPOSED TEMPORARY
PUBLIC VEHICLE PARK (EXCLUDING CONTAINER VEHICLE) AND PLACE OF RECREATION, SPORTS OR CULTURE (VENUE FOR VILLAGER CEREMONY) FOR A PERIOD OF 3 YEARS

SITE LOCATION

VARIOUS LOTS IN D.D. 129 AND ADJOINING GOVERNMENT LAND, LAU FAU SHAN, YUEN LONG, NEW TERRITORIES

SCALE

1:400 @ A1

DRAWN BY

MN

DATE

6.2.2023

REVIEWED BY

OL

DATE

27.3.2023

APPROVED BY

DATE

DWG. TITLE

AS-BUILT DRAINAGE PLAN

DWG. NO.

APPENDIX II

VER.

002

參考編號
REFERENCE No.
A/YL-LFS/464

繪圖 DRAWING
A-3

(摘錄自申請人於28. 3. 2023呈交的申請書)

(Extract from Applicant's
Submission of 28.3.2023)

DEVELOPMENT PARAMETERS

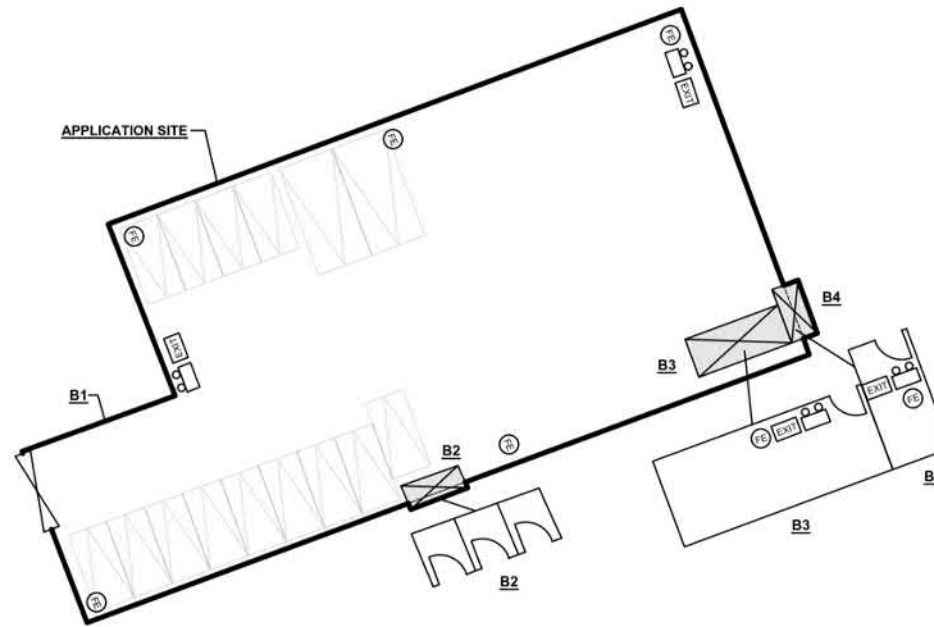
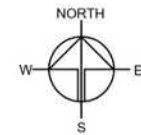
APPLICATION SITE AREA	: 973.5 m ²	(ABOUT)
COVERED AREA	: 973.5 m ²	(ABOUT)
UNCOVERED AREA	: NOT APPLICABLE	
PLOT RATIO	: 1	(ABOUT)
SITE COVERAGE	: 100%	(ABOUT)
NO. OF STRUCTURE	: 4	
DOMESTIC GFA	: NOT APPLICABLE	
NON-DOMESTIC GFA	: 973.5 m ²	(ABOUT)
TOTAL FGA	: 973.5 m ²	(ABOUT)

BUILDING HEIGHT	: 2.8 m - 8.6 m	(ABOUT)
NO. OF STOREY	: 1	

STRUCTURE	USE	COVERED AREA	GFA	BUILDING HEIGHT
B1	STRUCTURE FOR RECREATIONAL AND CEREMONY ACTIVITIES*	969 m ² (ABOUT)	969 m ² (ABOUT)	8.6 m (ABOUT)(1-STOREY)
B2	STORAGE OF CHAIRS AND TABLE FOR CEREMONY USE	1.5 m ² (ABOUT) [#]	1.5 m ² (ABOUT) [#]	2.8 m (ABOUT)(1-STOREY)
B3	STORAGE OF CHAIRS AND TABLE FOR CEREMONY USE	COVERED BY B1	COVERED BY B1	2.8 m (ABOUT)(1-STOREY)
B4	METER ROOM	3 m ² (ABOUT) [#]	3 m ² (ABOUT) [#]	3 m (ABOUT)(1-STOREY)
TOTAL		973.5 m ² (ABOUT)	973.5 m ² (ABOUT)	

*STRUCTURE B1 IS A SHED STRUCTURE (NOT ENCLOSED)

#STRUCTURE B2 AND B4 ARE PARTIALLY COVERED BY STRUCTURE B1



FIRE SERVICE INSTALLATIONS

- 4 X EMERGENCY LIGHTING
- 4 X EXIT SIGN
- 7 X 4.5KG DRY POWDER TYPE FIRE EXTINGUISHER

FS NOTES:

SUFFICIENT EMERGENCY LIGHTING SHALL BE PROVIDED THROUGHOUT THE ENTIRE BUILDING IN ACCORDANCE WITH BS5266:PART 1 AND BS EN 1838.

SUFFICIENT DIRECTIONAL AND EXIT SIGN SHALL BE PROVIDED IN ACCORDANCE WITH BS5266: PART 1 AND FSD CIRCULAR LETTER 5/2008.

LEGEND

- APPLICATION SITE
- STRUCTURE
- PARKING SPACE
- INGRESS / EGRESS

PLANNING CONSULTANT



PROJECT

PROPOSED TEMPORARY PUBLIC VEHICLE PARK (EXCLUDING CONTAINER VEHICLE) AND PLACE OF RECREATION, SPORTS OR CULTURE (VENUE FOR VILLAGER CEREMONY) FOR A PERIOD OF 3 YEARS

SITE LOCATION

VARIOUS LOTS IN D.D. 129 AND ADJOINING GOVERNMENT LAND, LAU FAU SHAN, YUEN LONG, NEW TERRITORIES

SCALE

1:100 @ 1:1

DRAWN BY MN DATE 6.2.2023

REVIEWED BY OL DATE 27.3.2023

APPROVED BY DATE

DRAW TITLE

FSIS PROPOSAL

DRAW NO

APPENDIX I

VER

002

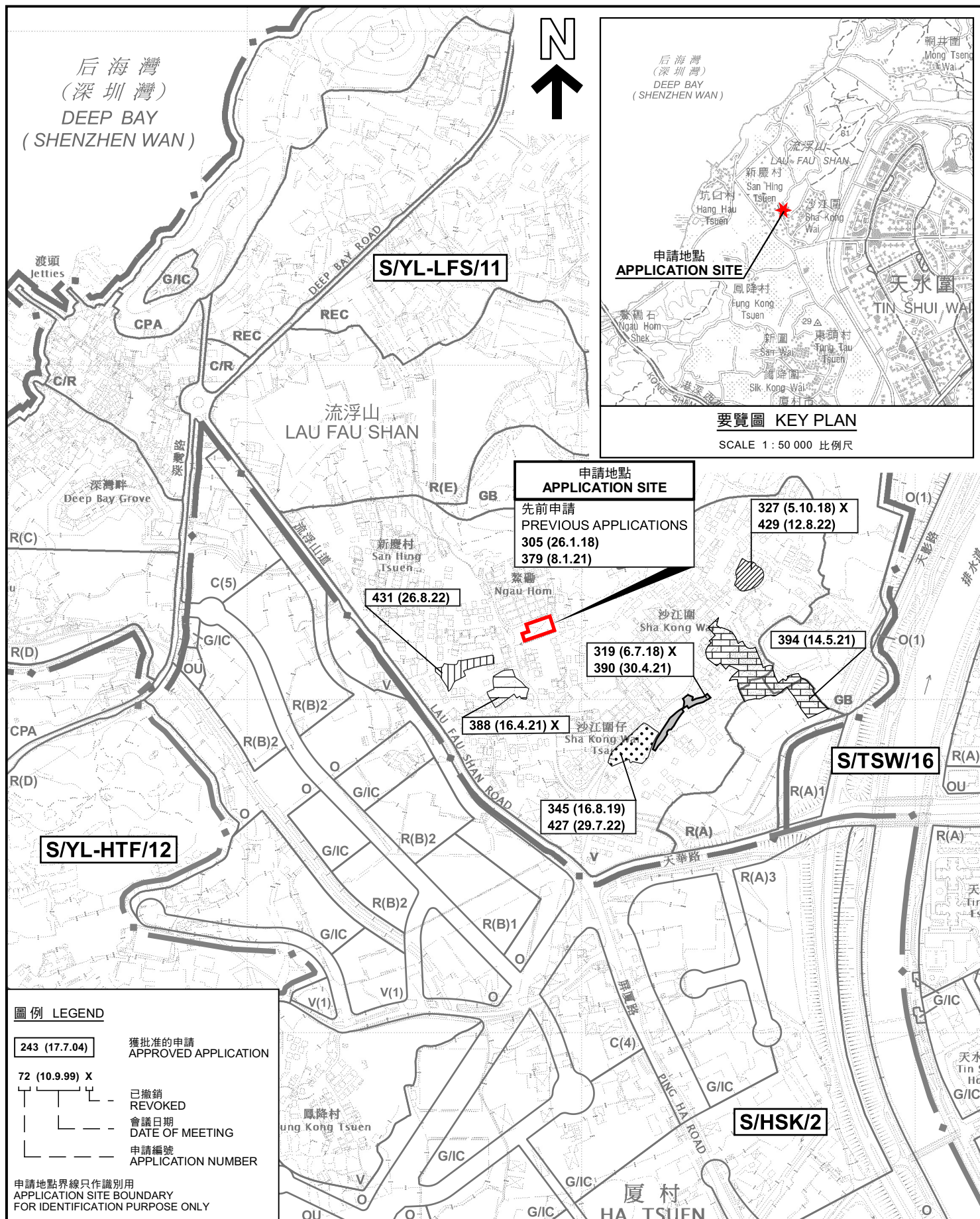
參考編號
REFERENCE No.
A/YL-LFS/464

繪圖 DRAWING
A-4

(摘錄自申請人於28. 3. 2023呈交的申請書)

(Extract from Applicant's
Submission of 28.3.2023)

N
↑

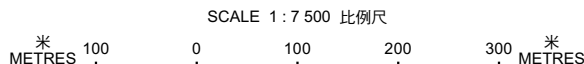


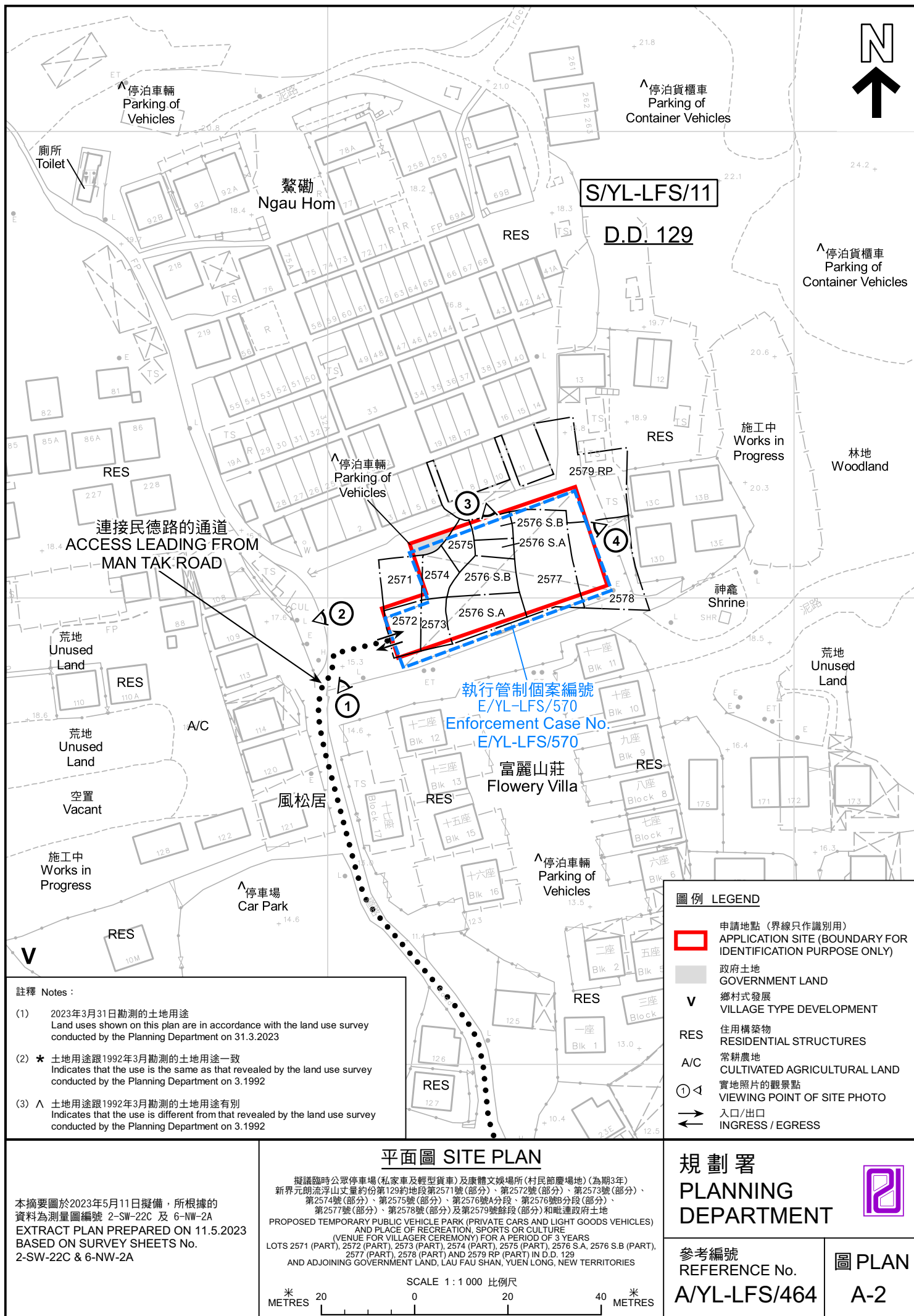
規劃署
PLANNING
DEPARTMENT

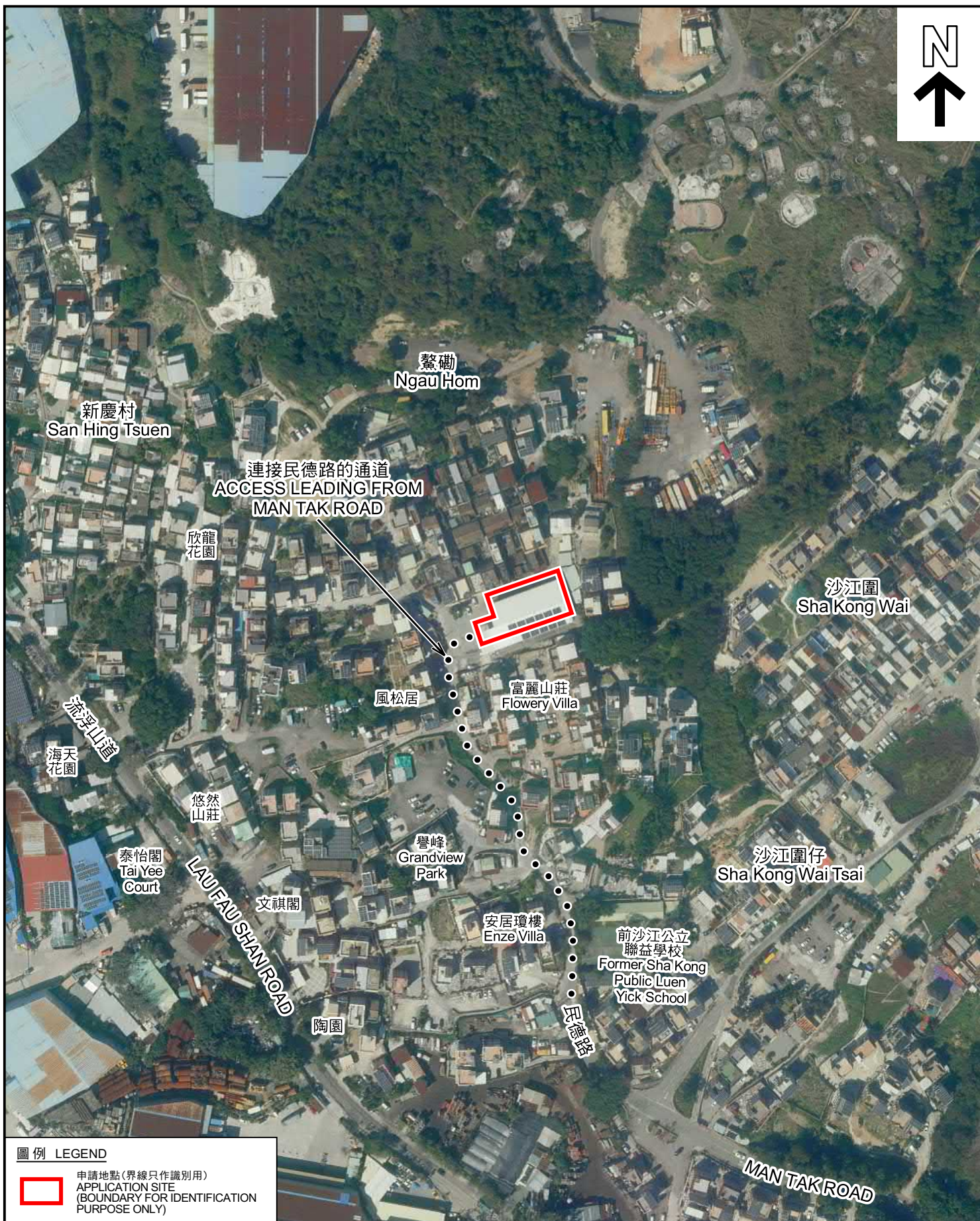


擬議臨時公眾停車場(私家車及輕型貨車)及康體文娛場所(村民前廣場地)(為期3年)
 新界元朗流浮山丈量約份第129號地段第2571號(部分)、第2572號(部分)、第2573號(部分)、
 第2574號(部分)、第2575號(部分)、第2576號4小段、第2576號部分地段(部分)、
 第2577號(部分)、第2578號(部分)及第2579號餘段(部分)和毗連政府土地
 PROPOSED TEMPORARY PUBLIC VEHICLE PARK (PRIVATE CARS AND LIGHT GOODS VEHICLES)
 AND PLACE OF RECREATION, SPORTS OR CULTURE
 (VENUE FOR VILLAGER CEREMONY) FOR A PERIOD OF 3 YEARS
 LOTS 2571 (PART), 2572 (PART), 2573 (PART), 2574 (PART), 2575 (PART), S.A., 2576 S.B (PART),
 2577 (PART), 2578 (PART) AND 2579 RP (PART) IN D.D. 129
 AND ADJOINING GOVERNMENT LAND, LAU FAU SHAN, YUEN LONG, NEW TERRITORIES

PLAN
A-1







圖例 LEGEND



申請地點(界線只作識別用)
APPLICATION SITE
(BOUNDARY FOR IDENTIFICATION
PURPOSE ONLY)

本摘要圖於2023年5月8日擬備，所根據的資料為地政總署於2022年3月8日拍得的航攝照片編號 E153660C
EXTRACT PLAN PREPARED ON 8.5.2023
BASED ON AERIAL PHOTO No.
E153660C TAKEN ON 8.3.2022 BY
LANDS DEPARTMENT

航攝照片 AERIAL PHOTO

擬議臨時公眾停車場(私家車及輕型貨車)及康體文娛場所(村民節慶場地)(為期3年)
新界元朗流浮山丈量約份第129約地段第2571號(部分)、第2572號(部分)、第2573號(部分)、
第2574號(部分)、第2575號(部分)、第2576號A分段、第2576號B分段(部分)、
第2577號(部分)、第2578號(部分)及第2579號餘段(部分)和毗連政府土地
PROPOSED TEMPORARY PUBLIC VEHICLE PARK (PRIVATE CARS AND LIGHT GOODS VEHICLES)
AND PLACE OF RECREATION, SPORTS OR CULTURE
(VENUE FOR VILLAGER CEREMONY) FOR A PERIOD OF 3 YEARS
LOTS 2571 (PART), 2572 (PART), 2573 (PART), 2574 (PART), 2575 (PART), 2576 S.A, 2576 S.B (PART),
2577 (PART), 2578 (PART) AND 2579 RP (PART) IN D.D. 129
AND ADJOINING GOVERNMENT LAND, LAU FAU SHAN, YUEN LONG, NEW TERRITORIES

規劃署
PLANNING
DEPARTMENT



參考編號
REFERENCE No.
A/YL-LFS/464

圖 PLAN
A-3



申請地點界線只作識別用 APPLICATION SITE BOUNDARY FOR IDENTIFICATION PURPOSE ONLY

實地照片 SITE PHOTOS

本圖於2023年5月9日擬備，所根據的資料為攝於2023年3月31日的實地照片
PLAN PREPARED ON 9.5.2023
BASED ON SITE PHOTOS
TAKEN ON 31.3.2023

擬議臨時公眾停車場(私家車及輕型貨車)及康體文娛場所(村民節慶場地)(為期3年)
新界元朗流浮山丈量約份第129約地段第2571號(部分)、第2572號(部分)、第2573號(部分)、
第2574號(部分)、第2575號(部分)、第2576號A分段、第2576號B分段(部分)、
第2577號(部分)、第2578號(部分)及第2579號餘段(部分)和毗連政府土地
PROPOSED TEMPORARY PUBLIC VEHICLE PARK (PRIVATE CARS AND LIGHT GOODS VEHICLES)
AND PLACE OF RECREATION, SPORTS OR CULTURE
(VENUE FOR VILLAGER CEREMONY) FOR A PERIOD OF 3 YEARS
LOTS 2571 (PART), 2572 (PART), 2573 (PART), 2574 (PART), 2575 (PART), 2576 S.A, 2576 S.B (PART),
2577 (PART), 2578 (PART) AND 2579 RP (PART) IN D.D. 129
AND ADJOINING GOVERNMENT LAND, LAU FAU SHAN, YUEN LONG, NEW TERRITORIES

規劃署
PLANNING
DEPARTMENT



參考編號
REFERENCE No.
A/YL-LFS/464

圖 PLAN
A-4