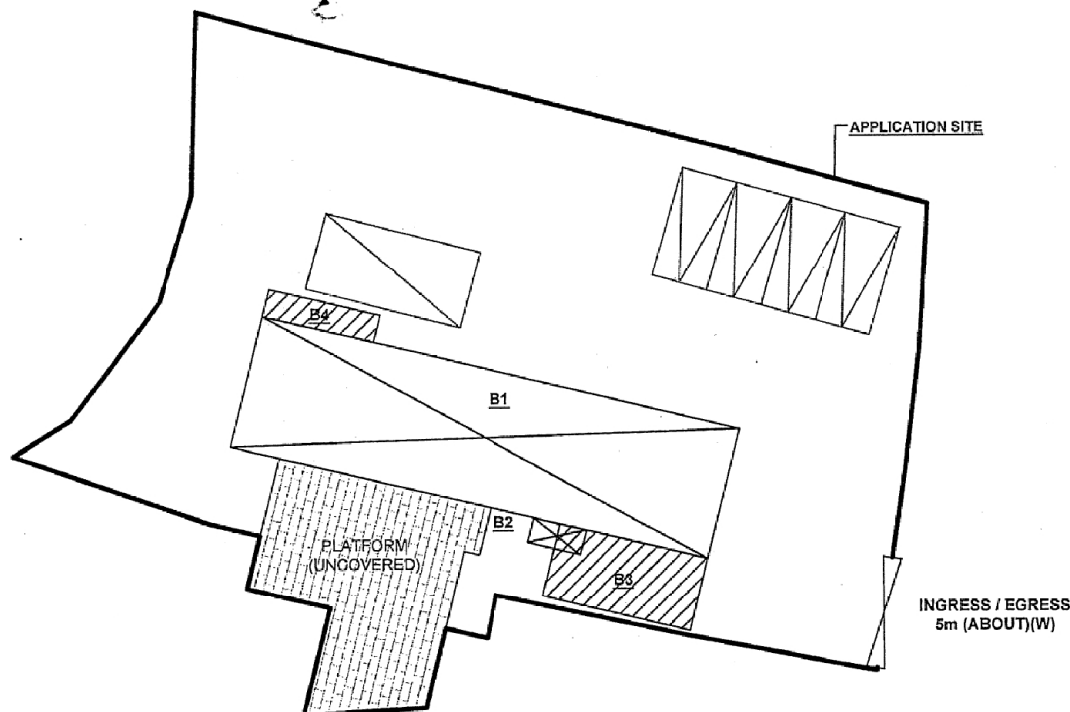
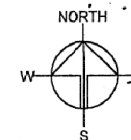


MAJOR DEVELOPMENT PARAMETERS

APPLICATION SITE AREA	: 791m ² (ABOUT)
COVERED AREA	: 158.5m ² (ABOUT)
UNCOVERED AREA	: 632.5m ² (ABOUT)
PLOT RATIO	: 0.2 (ABOUT)
SITE COVERAGE	: 20% (ABOUT)
NO. OF STRUCTURE	: 4
DOMESTIC GFA	: NOT APPLICABLE
NON-DOMESTIC GFA	: 161.5m ² (ABOUT)
BUILDING HEIGHT	: 2.8m TO 4m (ABOUT)
NO. OF STOREY	: 1

STRUCTURE	USE	COVERED AREA	GFA	BUILDING HEIGHT
B1	SHOP AND SERVICES WITH OFFICE	129m ² (ABOUT)	129m ² (ABOUT)	3.7m (ABOUT)(1-STOREY)
B2	TOILET	1.5m ² (ABOUT)*	1.5m ² (ABOUT)*	3m (ABOUT)(1-STOREY)
B3	RAIN SHELTER AND STORAGE OF GOODS	22m ² (ABOUT)	22m ² (ABOUT)	2.8m (ABOUT)(1-STOREY)
B4	FIRE SERVICE WATER TANK AND PUMP	6m ² (ABOUT)	6m ² (ABOUT)	4m (ABOUT)(1-STOREY)
TOTAL		158.5m ² (ABOUT)	158.5m ² (ABOUT)	

*STRUCTURE B2 - 3m² (ABOUT) IS PARTIALLY COVERED BY STRUCTURE B3



PARKING AND LOADING / UNLOADING PROVISIONS

NO. OF PRIVATE CAR PARKING SPACE	: 4
DIMENSION OF PARKING SPACE	: 5m (L) X 2.5m (W)
NO. OF L/U/L OF LIGHT GOODS VEHICLE	: 1
DIMENSION OF L/U/L SPACE	: 7.5m (L) X 3.5m (W)

LEGEND

	APPLICATION SITE
	STRUCTURE (ENCLOSED)
	STRUCTURE (CANOPY)
	PARKING SPACE
	LOADING / UNLOADING SPACE
	INGRESS / EGRESS

Drawing No.	Ver.
P04	01

Project
PROPOSED TEMPORARY
SHOP AND SERVICES WITH
ANCILLARY OFFICE FOR A
PERIOD OF 5 YEARS

LOTS 2874 AND 2876 (PART)
IN D.D. 104, MAI PO, YUEN
LONG, NEW TERRITORIES

Drawing Title
LAYOUT PLAN

Scale of A4
4 : 300

Drawn	Date
Revised	Date

(摘錄自申請人於 25. 10. 2021 呈交的申請書)
(Extract from Applicant's
Submission of 25.10.2021)

參考編號
REFERENCE No.
A/YL-MP/319

繪圖 DRAWING
A-1

MAJOR DEVELOPMENT PARAMETERS

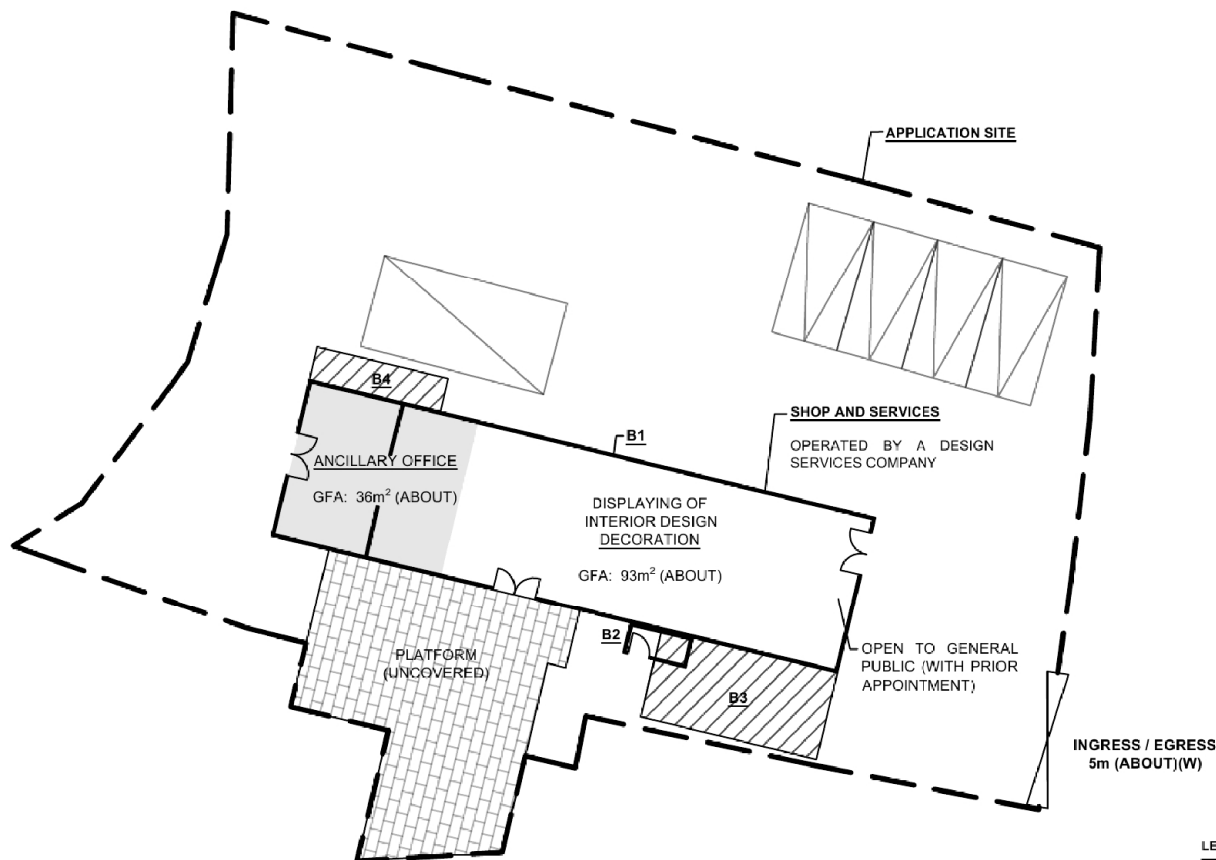
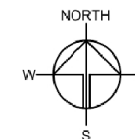
APPLICATION SITE AREA : 791m² (ABOUT)
COVERED AREA : 158.5m² (ABOUT)
UNCOVERED AREA : 632.5m² (ABOUT)

PLOT RATIO : 0.2 (ABOUT)
SITE COVERAGE : 20% (ABOUT)

NO. OF STRUCTURE : 4
DOMESTIC GFA : NOT APPLICABLE
NON-DOMESTIC GFA : 161.5m² (ABOUT)
BUILDING HEIGHT : 2.8m TO 4m (ABOUT)
NO. OF STOREY : 1

STRUCTURE	USE	COVERED AREA	GFA	BUILDING HEIGHT
B1	SHOP AND SERVICES WITH OFFICE	129m ² (ABOUT)	129m ² (ABOUT)	3.7m (ABOUT); 1-STOREY
B2	TOILET	1.5m ² (ABOUT)*	1.5m ² (ABOUT)*	3m (ABOUT); 1-STOREY
B3	RAIN SHELTER AND STORAGE OF GOODS	22m ² (ABOUT)	22m ² (ABOUT)	2.8m (ABOUT); 1-STOREY
B4	FIRE SERVICE WATER TANK AND PUMP RAIN SHELTER	6m ² (ABOUT)	6m ² (ABOUT)	4m (ABOUT); 1-STOREY
TOTAL		158.5m ² (ABOUT)	158.5m ² (ABOUT)	

*STRUCTURE B2 - 3m² (ABOUT) IS PARTIALLY COVERED BY STRUCTURE B3



PARKING AND LOADING / UNLOADING PROVISIONS

NO. OF PRIVATE CAR PARKING SPACE : 4
DIMENSION OF PARKING SPACE : 5m (L) X 2.5m (W)

NO. OF L/U/L OF LIGHT GOODS VEHICLE : 1
DIMENSION OF L/U/L SPACE : 7.5m (L) X 3.5m (W)

LEGEND

- APPLICATION SITE
- STRUCTURE (ENCLOSED)
- STRUCTURE (CANOPY)
- PARKING SPACE
- LOADING / UNLOADING SPACE
- INGRESS / EGRESS

Drawing No. **PLAN 1** Ver. **01**

Project
PROPOSED TEMPORARY
SHOP AND SERVICES WITH
ANCILLARY OFFICE FOR A
PERIOD OF 5 YEARS

LOTS 2874 AND 2876 (PART)
IN D.D. 104, MAI PO, YUEN
LONG, NEW TERRITORIES

Drawing Title
LAYOUT PLAN

Scale of A4
1:250

Drawn **13.12.2021** Date

Revised Date

(摘錄自申請人於15. 12. 2021呈交的進一步資料)
(Extract from Applicant's Further
Information Submitted on 15.12.2021)

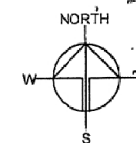
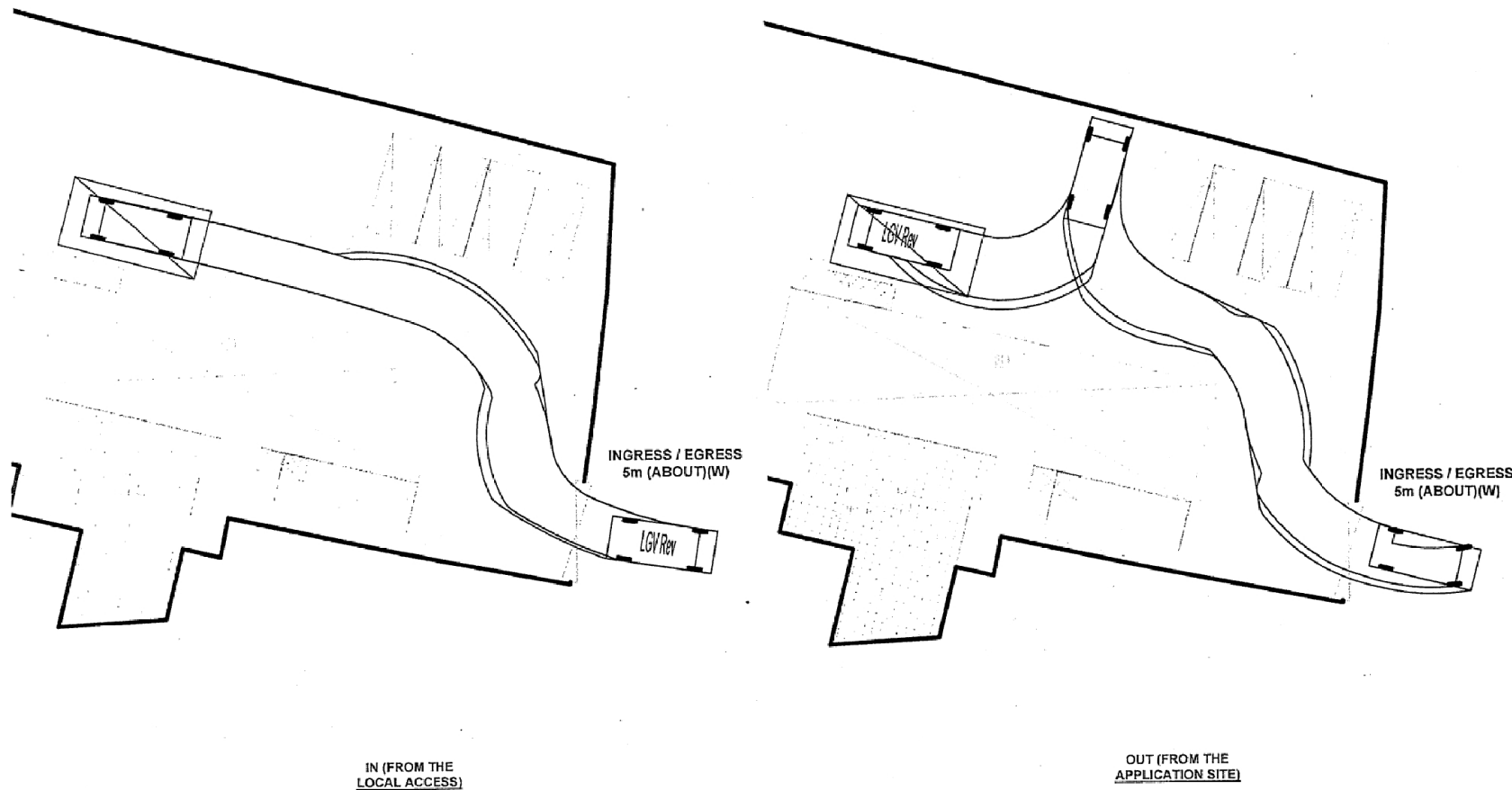
參考編號
REFERENCE No.
A/YL-MP/319

繪圖 **DRAWING**
A-2

SWEPT PATH ANALYSIS OF VEHICLE

VEHICLE USED FOR ANALYSIS : LIGHT GOODS VEHICLE
 DIMENSION OF VEHICLE : 2.1m (W) X 5.2m (L)

SWEPT PATHS GENERATED BY AUTODESK VEHICLE TRACKING 2019



Drawing No. P05
 Var. 01

Project
 PROPOSED TEMPORARY SHOP AND SERVICES WITH ANCILLARY OFFICE FOR A PERIOD OF 5 YEARS

LOTS 2874 AND 2876 (PART)
 IN D.D. 104 MAI PO, YUEN LONG, NEW TERRITORIES

Drawing Title
 SWEPT PATH ANALYSIS

Scale of A4
 1:300

Drawn	Date
20.9.2021	
Revised	Date

LEGEND

- APPLICATION SITE
- ENCLOSED STRUCTURE
- PARKING SPACE
- LUL SPACE FOR LGV
- LIGHT GOODS VEHICLE
- SWEPT PATH OF VEHICLE

PARKING AND LOADING / UNLOADING PROVISIONS

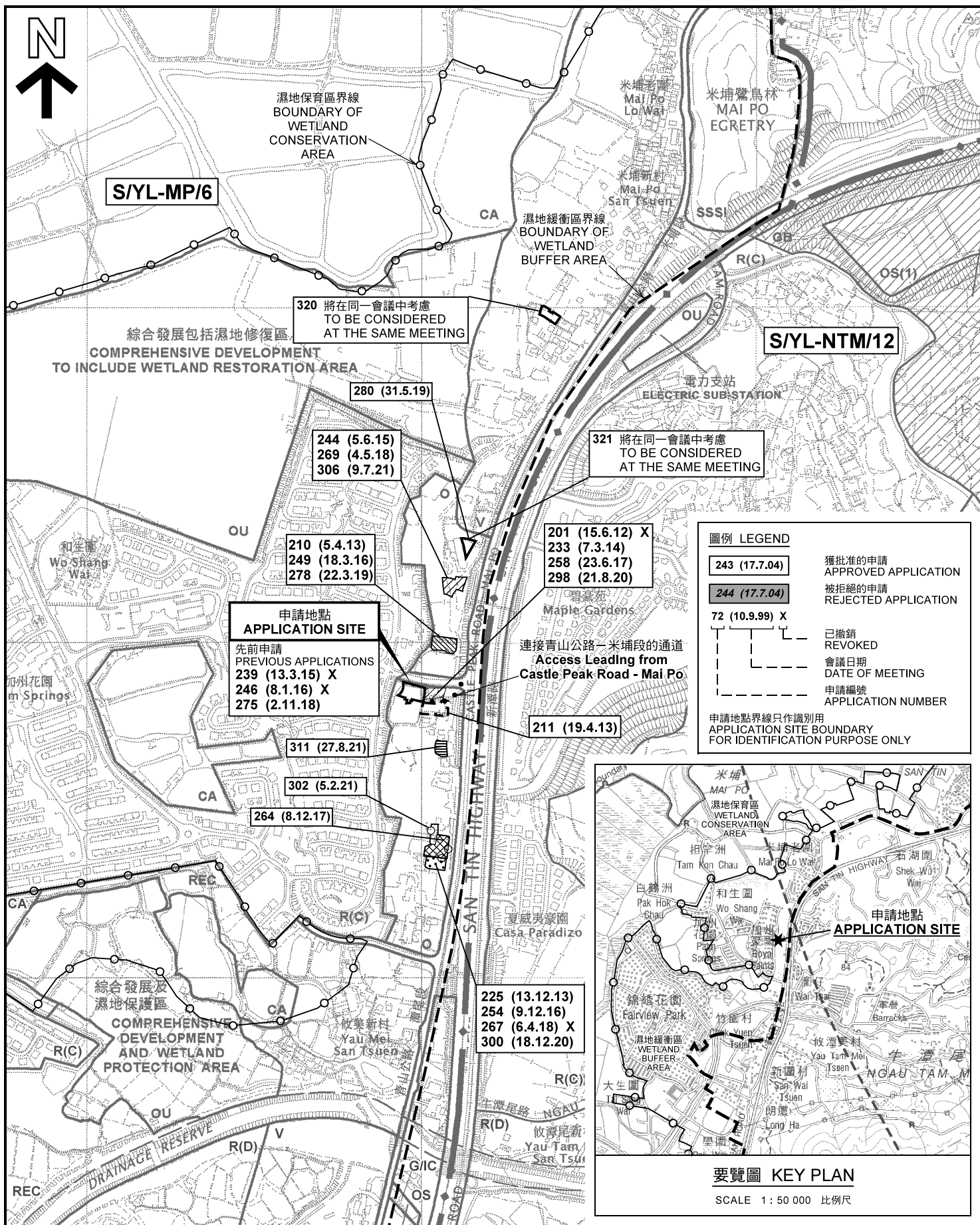
NO. OF PRIVATE CAR PARKING SPACE : 4
 DIMENSION OF PARKING SPACE : 5m (L) X 2.5m (W)

NO. OF LUL OF LIGHT GOODS VEHICLE : 1
 DIMENSION OF LUL SPACE : 7.5m (L) X 3.5m (W)

(摘錄自申請人於 25.10.2021 呈交的申請書)
 (Extract from Applicant's
 Submission of 25.10.2021)

參考編號
 REFERENCE No.
 A/YL-MP/319

繪圖 DRAWING
 A-3



本摘要圖於2021年12月21日擬備，
所根據的資料為於2005年2月1日
核准的分區計劃大綱圖編號 S/YL-MP/6
EXTRACT PLAN PREPARED ON 21.12.2021
BASED ON OUTLINE ZONING PLAN No.
S/YL-MP/6 APPROVED ON 1.2.2005

位置圖及同類申請 LOCATION PLAN WITH SIMILAR APPLICATIONS

臨時商店及服務行業及附屬辦公室（為期 5 年）
元朗米埔丈量約份第104約地段第2874號及第2876號（部分）
TEMPORARY SHOP AND SERVICES WITH
ANCILLARY OFFICE FOR A PERIOD OF 5 YEARS
LOT 2874 AND 2876 (PART) IN D.D. 104,
MAI PO, YUEN LONG

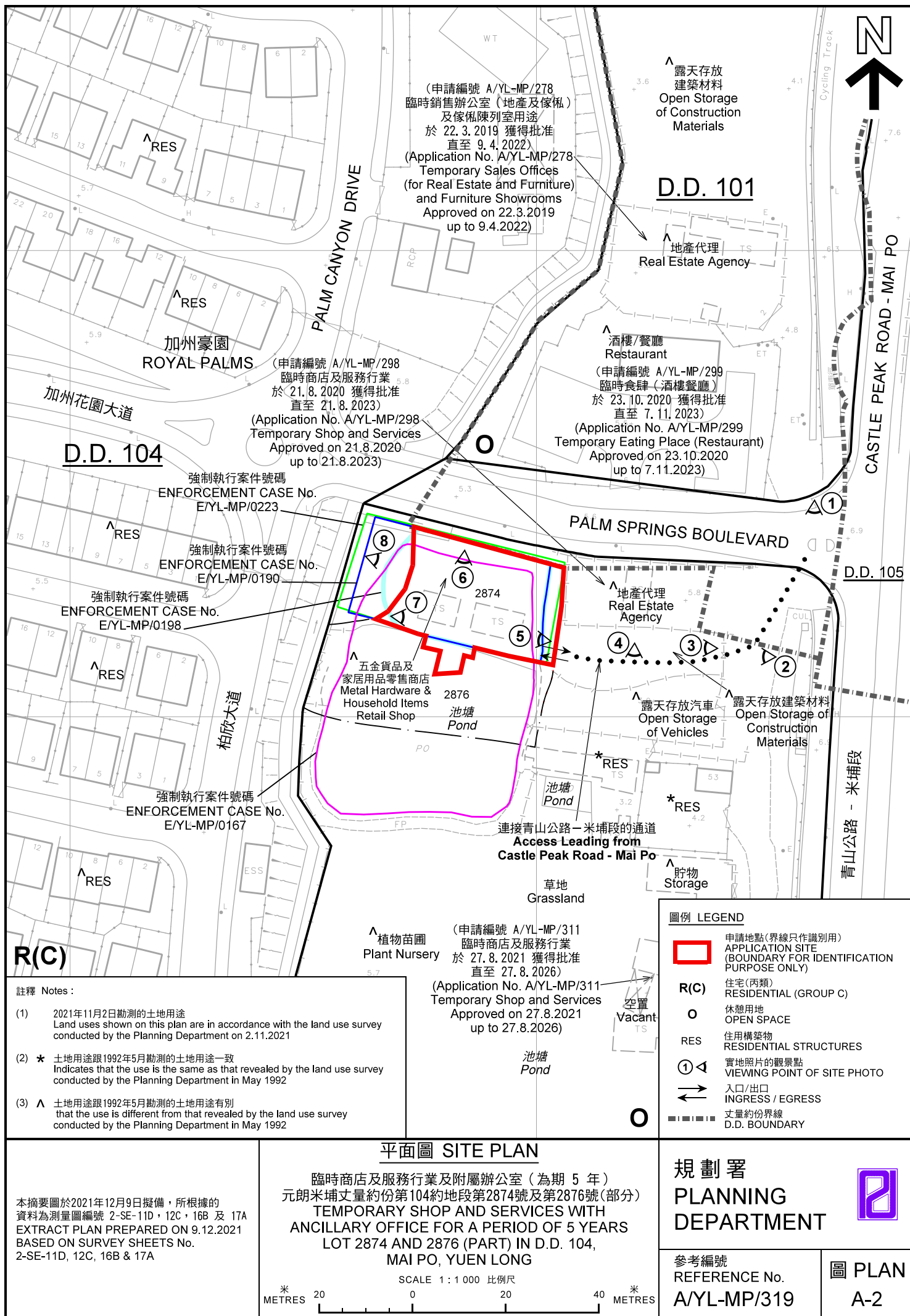
SCALE 1 : 7 500 比例尺
0 100 200 300
METRES

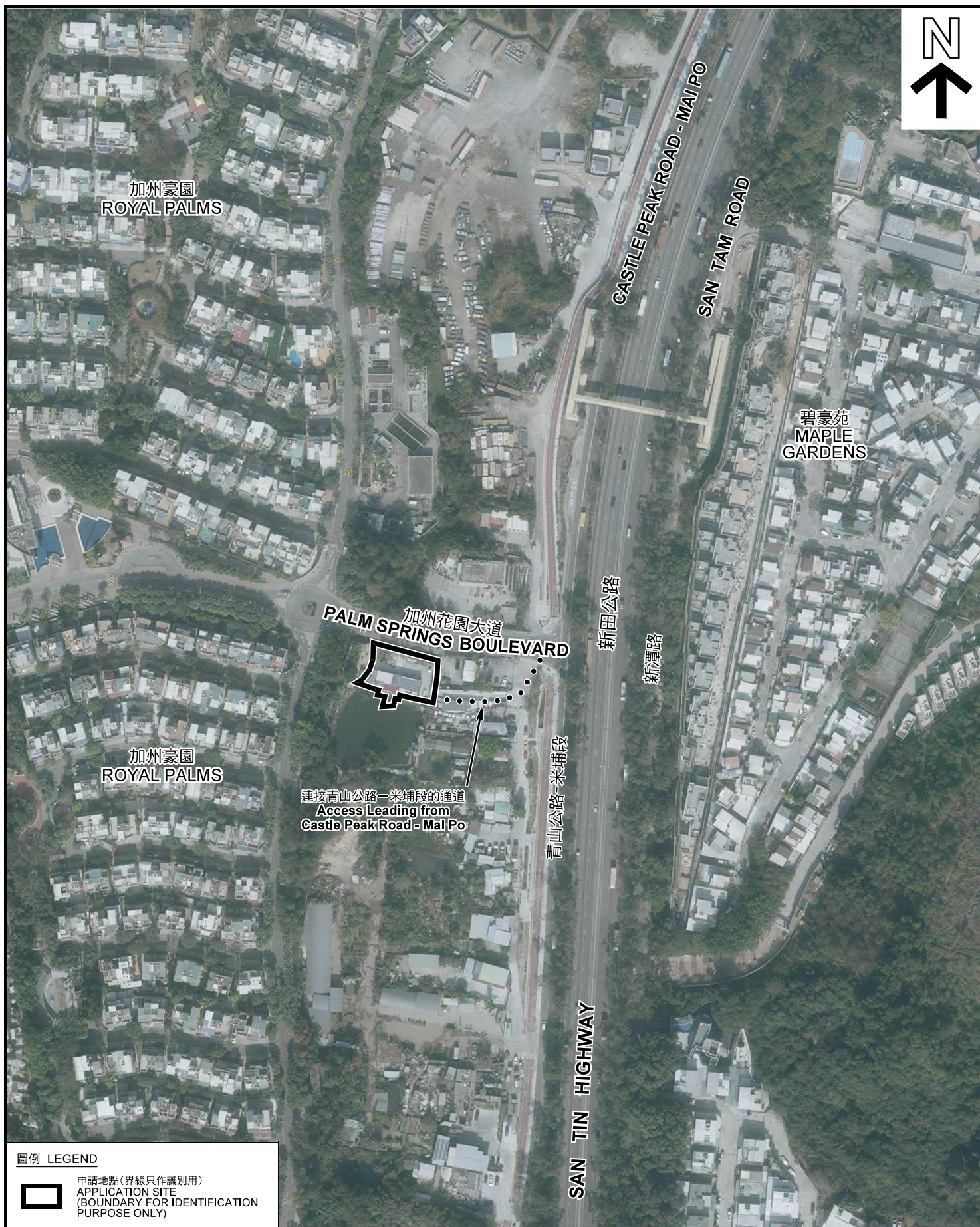
規劃署
PLANNING
DEPARTMENT



參考編號
REFERENCE No.
A/YL-MP/319

圖 PLAN
A-1





圖例 LEGEND



申請地點(界線只作識別用)
APPLICATION SITE
(BOUNDARY FOR IDENTIFICATION
PURPOSE ONLY)

本摘要圖於2021年12月1日擬備，所根據的資料為地政總署於2021年1月14日拍得的航攝照片編號 E125577C
EXTRACT PLAN PREPARED ON 1.12.2021
BASED ON AERIAL PHOTO No.
E125577C TAKEN ON 14.1.2021
BY LANDS DEPARTMENT

航攝照片 AERIAL PHOTO

臨時商店及服務行業及附屬辦公室（為期 5 年）
元朗米埔丈量約份第104約地段第2874號及第2876號(部分)
TEMPORARY SHOP AND SERVICES WITH
ANCILLARY OFFICE FOR A PERIOD OF 5 YEARS
LOT 2874 AND 2876 (PART) IN D.D. 104,
MAI PO, YUEN LONG

規劃署
PLANNING
DEPARTMENT



參考編號
REFERENCE No.
AYL-MP/319

圖 PLAN
A-3



日期 Date 2.11.2021



日期 Date 2.11.2021



日期 Date 7.12.2021

申請地點界線只作識別用 APPLICATION SITE BOUNDARY FOR IDENTIFICATION PURPOSE ONLY

實地照片 SITE PHOTOS

臨時商店及服務行業及附屬辦公室（為期 5 年）
元朗米埔丈量約份第104約地段第2874號及第2876號（部分）
TEMPORARY SHOP AND SERVICES WITH
ANCILLARY OFFICE FOR A PERIOD OF 5 YEARS
LOT 2874 AND 2876 (PART) IN D.D. 104,
MAI PO, YUEN LONG

規 劃 署
PLANNING
DEPARTMENT



參考編號
REFERENCE No.
A/YL-MP/319

圖 PLAN
A-4a

本圖於2021年12月9日擬備，所根據的
資料為攝於2021年11月2日及12月7日的實地照片
PLAN PREPARED ON 9.12.2021
BASED ON SITE PHOTOS
TAKEN ON 2.11.2021 AND 7.12.2021



申請地點界線只作識別用 APPLICATION SITE BOUNDARY FOR IDENTIFICATION PURPOSE ONLY

實地照片 SITE PHOTOS

臨時商店及服務行業及附屬辦公室（為期 5 年）
元朗米埔丈量約份第104約地段第2874號及第2876號（部分）
TEMPORARY SHOP AND SERVICES WITH
ANCILLARY OFFICE FOR A PERIOD OF 5 YEARS
LOT 2874 AND 2876 (PART) IN D.D. 104,
MAI PO, YUEN LONG

規 劃 署
PLANNING
DEPARTMENT



參考編號
REFERENCE No.
A/YL-MP/319

圖 PLAN
A-4b

本圖於2021年12月9日擬備，所根據的資料為攝於2021年11月2日的實地照片
PLAN PREPARED ON 9.12.2021
BASED ON SITE PHOTOS
TAKEN ON 2.11.2021



申請地點界線只作識別用 APPLICATION SITE BOUNDARY FOR IDENTIFICATION PURPOSE ONLY

實地照片 SITE PHOTOS

臨時商店及服務行業及附屬辦公室（為期 5 年）
元朗米埔丈量約份第104約地段第2874號及第2876號（部分）
TEMPORARY SHOP AND SERVICES WITH
ANCILLARY OFFICE FOR A PERIOD OF 5 YEARS
LOT 2874 AND 2876 (PART) IN D.D. 104,
MAI PO, YUEN LONG

規劃署
PLANNING
DEPARTMENT



參考編號
REFERENCE No.
A/YL-MP/319

圖 PLAN
A-4c

本圖於2021年12月9日擬備，所根據的
資料為攝於2021年11月2日的實地照片
PLAN PREPARED ON 9.12.2021
BASED ON SITE PHOTOS
TAKEN ON 2.11.2021