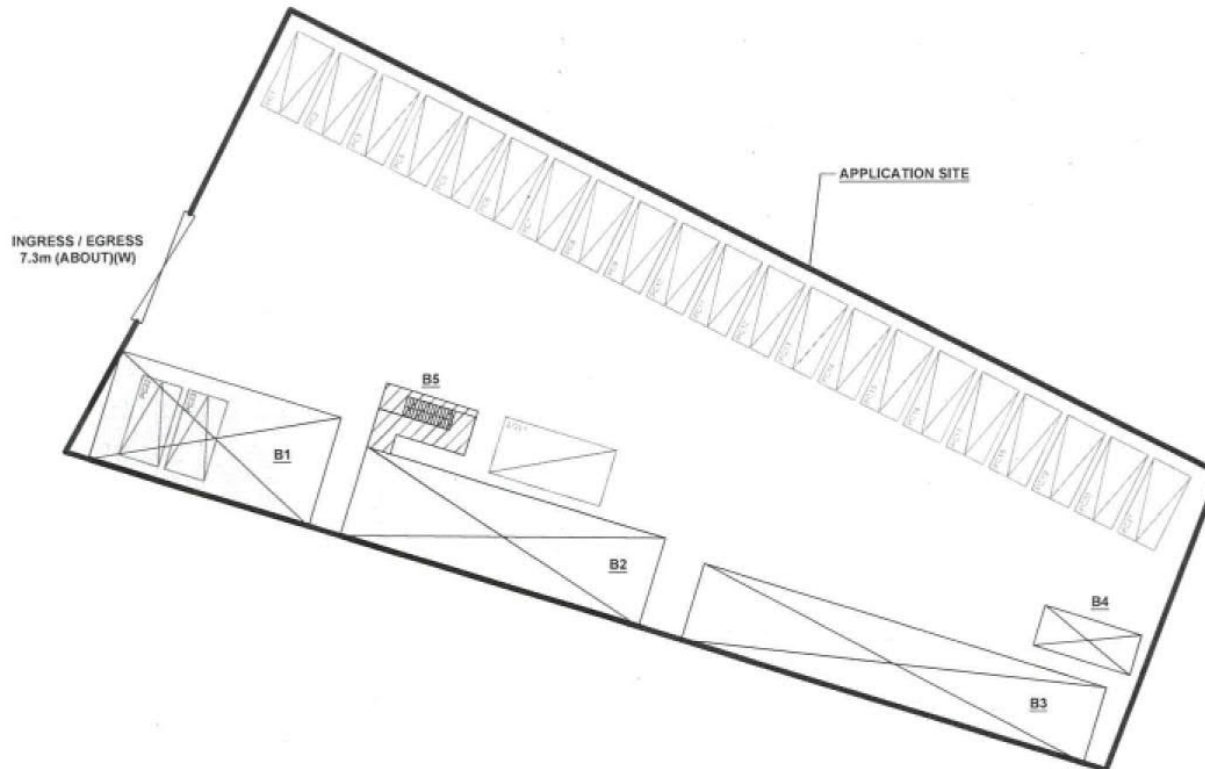
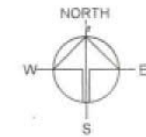


DEVELOPMENT PARAMETERS

APPLICATION SITE AREA	1,571 m ² (ABOUT)
COVERED AREA	355 m ² (ABOUT)
UNCOVERED AREA	1,216 m ² (ABOUT)
PLOT RATIO	0.35 (ABOUT)
SITE COVERAGE	23 % (ABOUT)
NO. OF STRUCTURE	5
DOMESTIC GFA	NOT APPLICABLE
NON-DOMESTIC GFA	555 m ² (ABOUT)
TOTAL GFA	555 m ² (ABOUT)
BUILDING HEIGHT	3 m - 7 m (ABOUT)
NO. OF STOREY	1 - 2

STRUCTURE	USE	COVERED AREA	GFA	BUILDING HEIGHT
B1	PARKING SPACE (G/F)	95 m ² (ABOUT)	95 m ² (ABOUT)	7m (ABOUT)(2-STOREY)
B2	OFFICE (1/F)	105 m ² (ABOUT)	95 m ² (ABOUT)	7m (ABOUT)(2-STOREY)
B3	SHOP AND SERVICES (G/F)	122 m ² (ABOUT)	105 m ² (ABOUT)	3.5m (ABOUT)(1-STOREY)
B4	OFFICE (1/F)	15 m ² (ABOUT)	122m ² (ABOUT)	3m (ABOUT)(1-STOREY)
B5	SHOP AND SERVICES	18 m ² (ABOUT)	15m ² (ABOUT)	3m (ABOUT)(1-STOREY)
TOTAL		355 m ² (ABOUT)	555 m ² (ABOUT)	



PARKING AND LOADING/UNLOADING PROVISION

NO. OF PRIVATE CAR PARKING SPACE	23
DIMENSION OF PARKING SPACE	5 m (L) X 2.5 m (W)
NO. LUL SPACE FOR LIGHT GOODS VEHICLE	1
DIMENSION OF LOADING/UNLOADING SPACE	7 m (L) X 3.5 m (W)

LEGEND

	APPLICATION SITE
	STRUCTURE (ENCLOSED / PARTIAL ENCLOSED)
	STRUCTURE (4-SIDE OPENED)
	PARKING SPACE
	LUL SPACE (LIGHT GOODS VEHICLE)
	INGRESS / EGRESS

PLANNING CONSULTANT



PROJECT

TEMPORARY SHOP AND SERVICES AND PUBLIC VEHICLE PARK FOR A PERIOD OF 3 YEARS

SITE LOCATION

LOTS 3250 S.B SS.16 RP AND 3250 S.B SS.17 RP IN D.D. 104 MAI PO, YUEN LONG, NEW TERRITORIES

SCALE

1:100 @ 1/4" = 1' - 0"

DRAWN BY

MN

DATE

24.7.2023

CHECKED BY

OL

DATE

02.08.2023

APPROVED BY

DATE

DWG TITLE

LAYOUT PLAN

DWG NO

PLAN 4

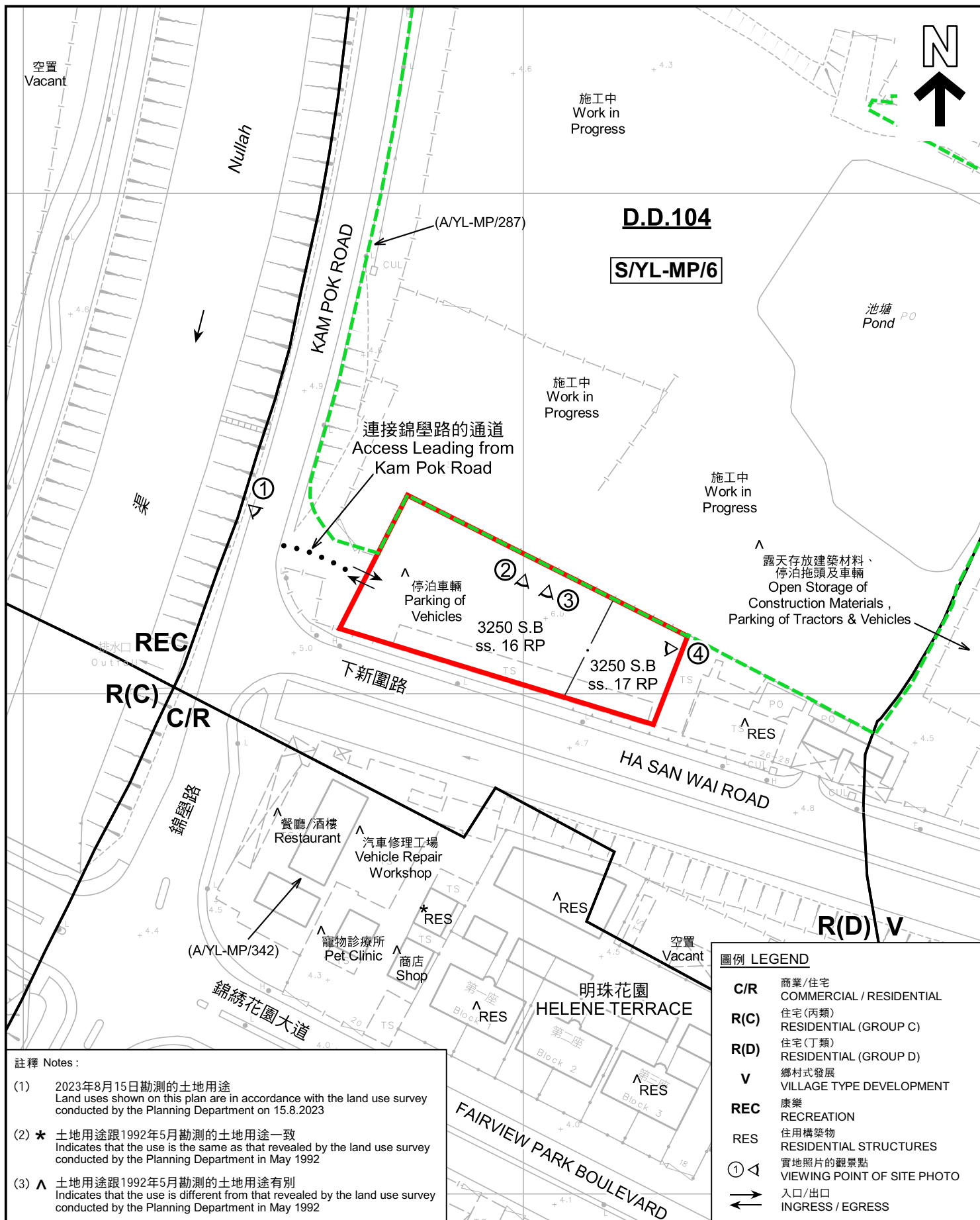
VER

002

(摘錄自申請人於 8.8.2023 呈交的申請書)
(Extract from Applicant's
Submission of 8.8.2023)

參考編號
REFERENCE No.
A/YL-MP/354

繪圖
DRAWING
A - 1



註釋 Notes:

- (1) 2023年8月15日勘測的土地用途
Land uses shown on this plan are in accordance with the land use survey conducted by the Planning Department on 15.8.2023
- (2) * 土地用途跟1992年5月勘測的土地用途一致
Indicates that the use is the same as that revealed by the land use survey conducted by the Planning Department in May 1992
- (3) ^ 土地用途跟1992年5月勘測的土地用途有別
Indicates that the use is different from that revealed by the land use survey conducted by the Planning Department in May 1992

圖例 LEGEND

- | | |
|------|---|
| C/R | 商業/住宅
COMMERCIAL / RESIDENTIAL |
| R(C) | 住宅(丙類)
RESIDENTIAL (GROUP C) |
| R(D) | 住宅(丁類)
RESIDENTIAL (GROUP D) |
| V | 鄉村式發展
VILLAGE TYPE DEVELOPMENT |
| REC | 康樂
RECREATION |
| RES | 住用構築物
RESIDENTIAL STRUCTURES |
| ① | 實地照片的觀景點
VIEWING POINT OF SITE PHOTO |
| ↔ | 入口/出口
INGRESS / EGRESS |

平面圖 SITE PLAN

臨時商店及服務行業及公眾停車場 (為期3年)
元朗米埔丈量約份第104約地段第3250號B分段第16小分段餘段及
第3250號B分段第17小分段餘段
TEMPORARY SHOP AND SERVICES AND PUBLIC VEHICLE PARK
FOR A PERIOD OF 3 YEARS
LOTS 3250 S.B ss.16 RP AND 3250 S.B ss.17 RP IN D.D. 104,
MAI PO, YUEN LONG

SCALE 1 : 1 000 比例尺

米 20 0 20 40 米
METRES

規劃署
PLANNING
DEPARTMENT



參考編號
REFERENCE No.
A/YL-MP/354

圖 PLAN
A-2

本摘要圖於2023年9月15日擬備，
所根據的資料為測量圖編號
2-SE-16D 及 21B
EXTRACT PLAN PREPARED ON 15.9.2023
BASED ON SURVEY SHEETS No.
2-SE-16D & 21B



圖例 LEGEND



申請地點 (界線只作識別用)
APPLICATION SITE (BOUNDARY FOR
IDENTIFICATION PURPOSE ONLY)

本摘要圖於2023年9月15日擬備，
所根據的資料為地政總署於2022年3月8日
拍得的航攝照片編號 E153013C
EXTRACT PLAN PREPARED ON 15.9.2023
BASED ON AERIAL PHOTO No.
E153013C TAKEN ON 8.3.2022
BY LANDS DEPARTMENT

航攝照片 AERIAL PHOTO

臨時商店及服務行業及公眾停車場 (為期3年)
元朗米埔丈量約份第104約地段第3250號B分段第16小分段餘段及
第3250號B分段第17小分段餘段
TEMPORARY SHOP AND SERVICES AND PUBLIC VEHICLE PARK
FOR A PERIOD OF 3 YEARS
LOTS 3250 S.B ss.16 RP AND 3250 S.B ss.17 RP IN D.D. 104,
MAI PO, YUEN LONG

規劃署
PLANNING
DEPARTMENT



參考編號
REFERENCE No.
A/YL-MP/354

圖 PLAN
A-3

1



2



3



4



申請地點界線只作識別用 APPLICATION SITE BOUNDARY FOR IDENTIFICATION PURPOSE ONLY

實地照片 SITE PHOTOS

臨時商店及服務行業及公眾停車場（為期3年）
元朗米埔丈量約份第104約地段第3250號B分段第16小分段餘段及
第3250號B分段第17小分段餘段
TEMPORARY SHOP AND SERVICES AND PUBLIC VEHICLE PARK
FOR A PERIOD OF 3 YEARS
LOTS 3250 S.B ss.16 RP AND 3250 S.B ss.17 RP IN D.D. 104,
MAI PO, YUEN LONG

規劃署
PLANNING
DEPARTMENT



參考編號
REFERENCE No.
A/YL-MP/354

圖 PLAN
A-4

本圖於2023年9月15日擬備，所根據的
資料為攝於2023年8月15日的實地照片
PLAN PREPARED ON 15.9.2023
BASED ON SITE PHOTOS
TAKEN ON 15.8.2023