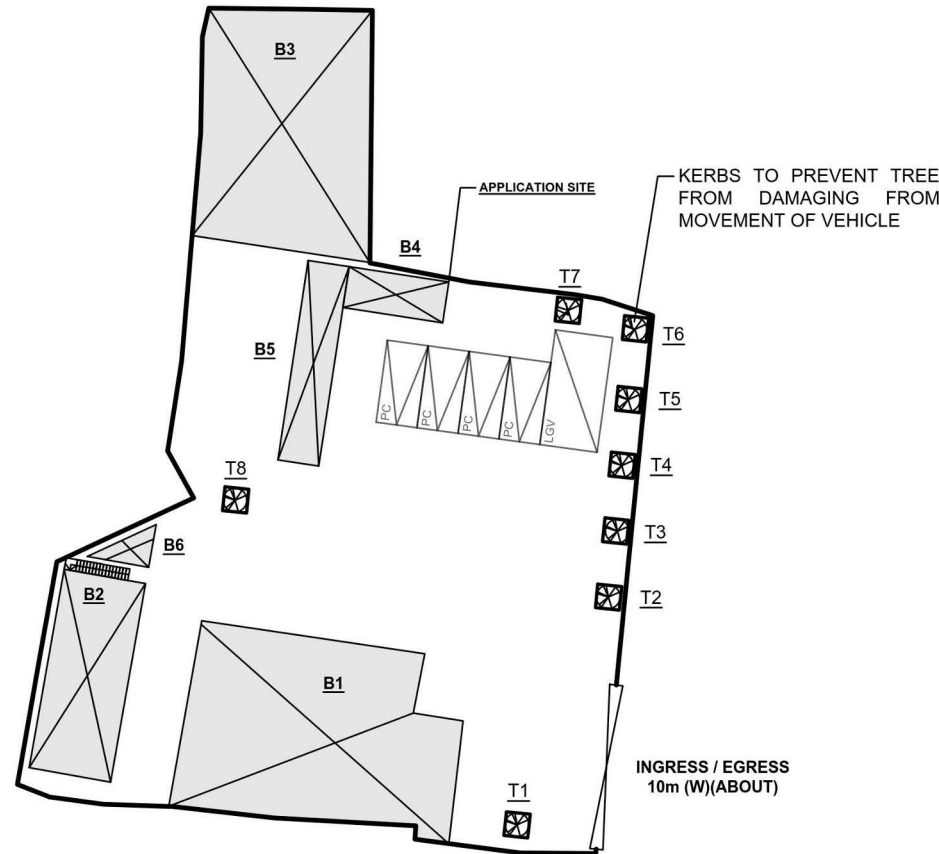
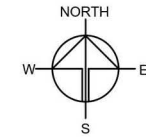


DEVELOPMENT PARAMETERS

APPLICATION SITE AREA	: 1,209m ²	(ABOUT)
COVERED AREA	: 435.5m ²	(ABOUT)
UNCOVERED AREA	: 773.5m ²	(ABOUT)
PLOT RATIO	: 0.4	(ABOUT)
SITE COVERAGE	: 36%	(ABOUT)
NO. OF STRUCTURE	: 6	
DOMESTIC GFA	: NOT APPLICABLE	
NON-DOMESTIC GFA	: 511.5m ²	(ABOUT)
TOTAL GFA	: 511.5 m ²	(ABOUT)
BUILDING HEIGHT	: 3 m - 7.2 m	(ABOUT)
NO. OF STOREY	: 1 - 2	
NO. OF EXISTING TREES	: 8 (T1 - T8)	
TREE SPECIES	: BAUHINIA x BLAKEANA	

STRUCTURE	USE	COVERED AREA	GROSS FLOOR AREA	BUILDING HEIGHT
B1	SHOP AND SERVICES	173.5m ² (ABOUT)	173.5m ² (ABOUT)	7.2m (ABOUT)(1-STOREY)
B2	SHOP AND SERVICES	61m ² (ABOUT)	61m ² (ABOUT)	7.2m (ABOUT)(2-STOREY)
B3	SITE OFFICE	151m ² (ABOUT)	61m ² (ABOUT)	5.5m (ABOUT)(1-STOREY)
B4	SHOP AND SERVICES	15m ² (ABOUT)	151m ² (ABOUT)	6m (ABOUT)(2-STOREY)
B5	TOILET	30m ² (ABOUT)	15m ² (ABOUT)	3m (ABOUT)(1-STOREY)
B6	STORAGE OF GOODS	5m ² (ABOUT)	30m ² (ABOUT)	3m (ABOUT)(1-STOREY)
	FIRE SERVICE WATER TANK AND CONTROL PANEL		5m ² (ABOUT)	
TOTAL		435.5m ² (ABOUT)	511.5m ² (ABOUT)	



PARKING AND LOADING / UNLOADING (L/UL) PROVISION

NO. OF PRIVATE CAR PARKING SPACE	: 4
DIMENSION OF PARKING SPACE	: 5 m (L) X 2.5 m (W)
NO. OF L/UL SPACE FOR LIGHT GOODS VEHICLE	: 1
DIMENSION OF PARKING SPACE	: 7 m (L) X 3.5 m (W)

LEGEND

	APPLICATION SITE
	STRUCTURE
	PARKING SPACE (PC)
	L/UL SPACE (LGV)
	INGRESS / EGRESS
	EXISTING TREES

PLANNING CONSULTANT



PROJECT

TEMPORARY SHOP AND SERVICES (WOODEN WARE RETAIL SHOP) FOR A PERIOD OF 5 YEARS

SITE LOCATION

VARIOUS LOTS IN D.D.104 AND ADJOINING GOVERNMENT LAND, MAI PO, YUEN LONG, NEW TERRITORIES

SCALE

1:400 @ A4

DRAWN BY

MN

DATE

13.12.2024

CHECKED BY

DATE

APPROVED BY

DATE

DWG. TITLE

LAYOUT PLAN

DWG NO.

PLAN 4

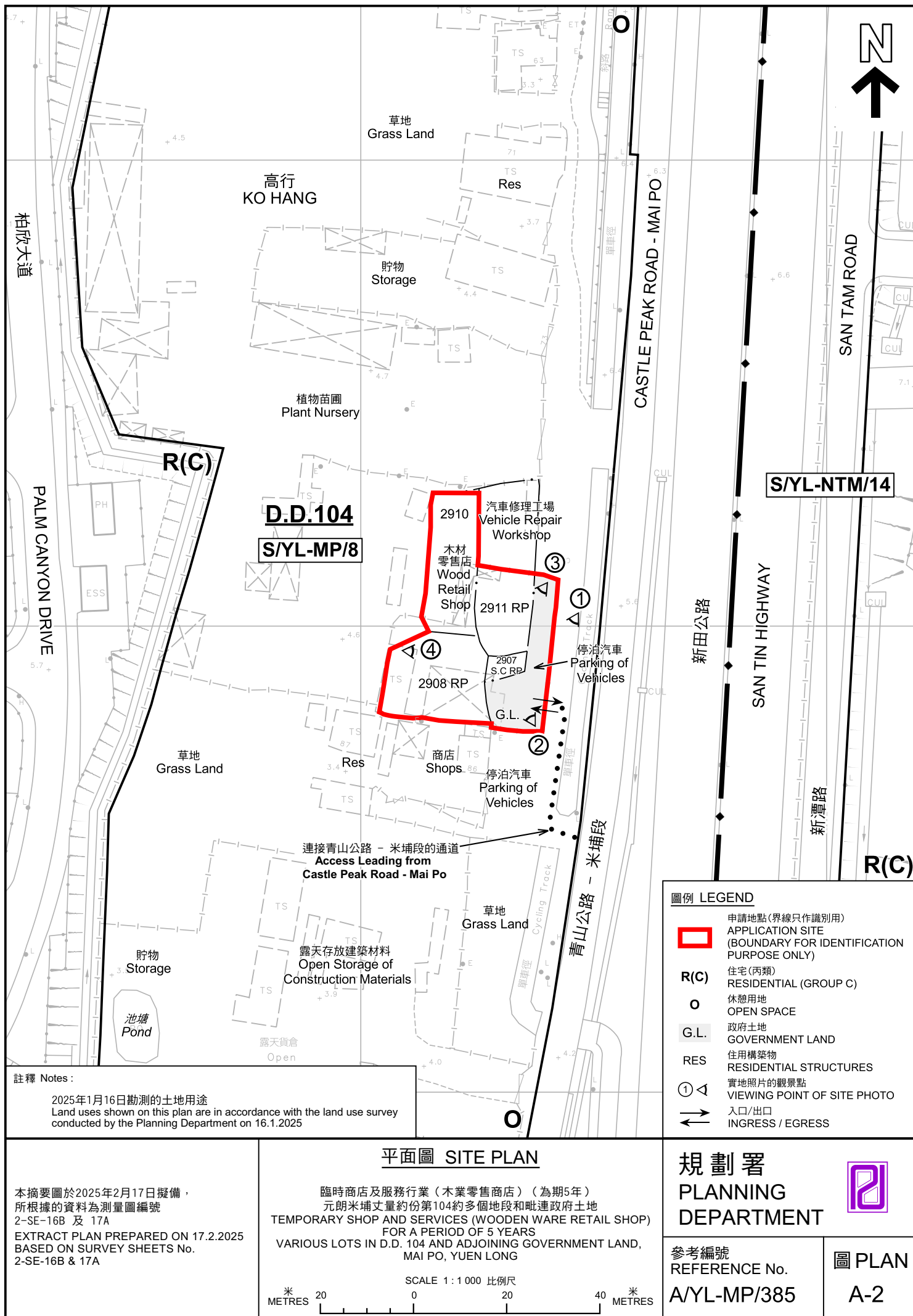
VER.

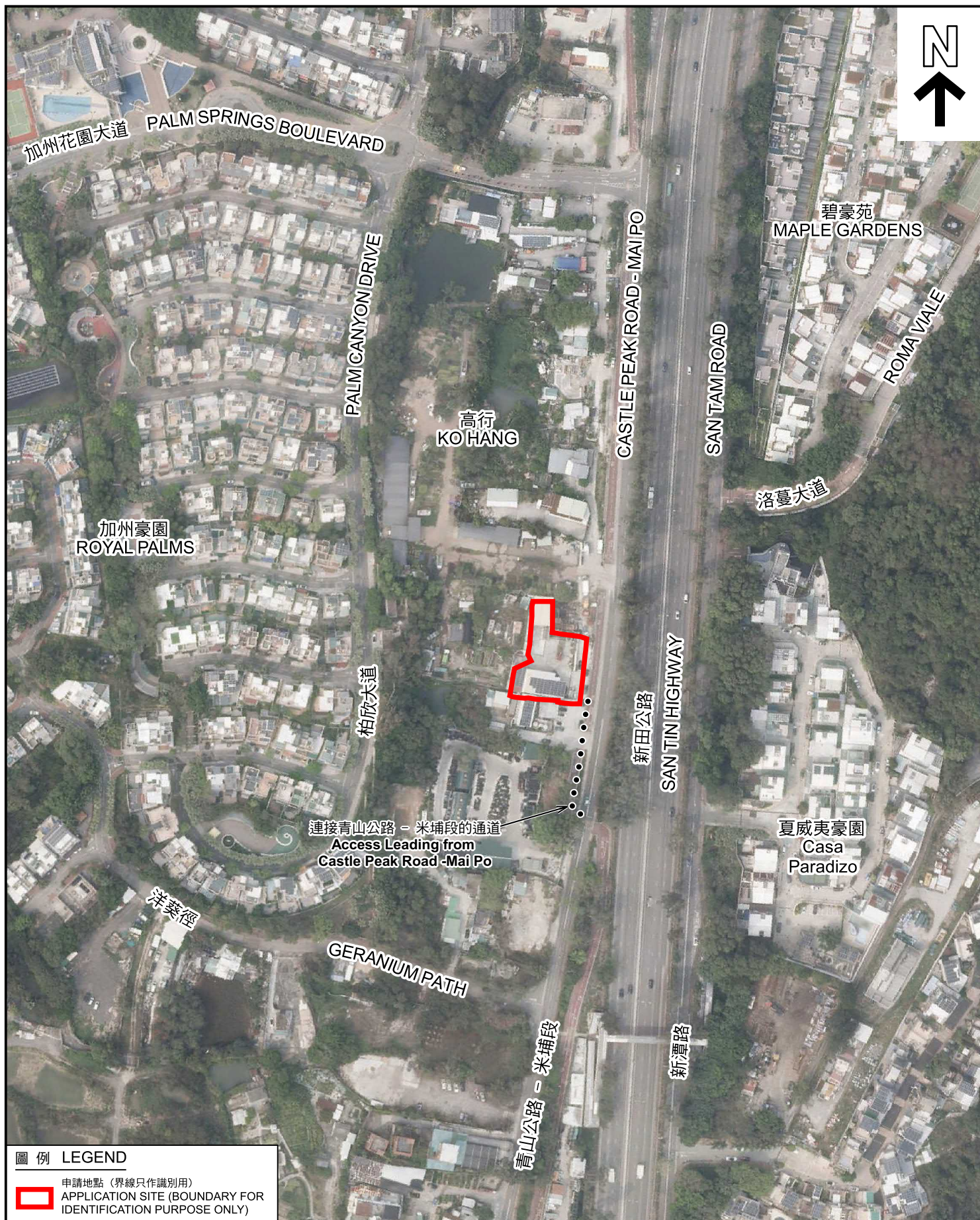
001

(摘錄自申請人於24. 2. 2025呈交的進一步資料)
(Extract from Applicant's Further Information Submitted on 24.2.2025)

參考編號
REFERENCE No.
A/YL-MP/385

繪圖
DRAWING
A - 1





圖例 LEGEND



申請地點 (界線只作識別用)
APPLICATION SITE (BOUNDARY FOR
IDENTIFICATION PURPOSE ONLY)

航攝照片 AERIAL PHOTO

本摘要圖於2025年1月27日擬備，
所根據的資料為地政總署於2024年3月17日
拍得的航攝照片編號 E219311C 及 E219313C
EXTRACT PLAN PREPARED ON 27.1.2025
BASED ON AERIAL PHOTO No.
E219311C & E219313C TAKEN ON 17.3.2024
BY LANDS DEPARTMENT

臨時商店及服務行業 (木業零售商店) (為期5年)
元朗米埔丈量約份第104約多個地段和毗連政府土地
TEMPORARY SHOP AND SERVICES (WOODEN WARE RETAIL SHOP)
FOR A PERIOD OF 5 YEARS
VARIOUS LOTS IN D.D. 104 AND ADJOINING GOVERNMENT LAND,
MAI PO, YUEN LONG

規劃署
PLANNING
DEPARTMENT



參考編號
REFERENCE No.
A/YL-MP/385

圖 PLAN
A-3

1



2



3



4



申請地點界線只作識別用 APPLICATION SITE BOUNDARY FOR IDENTIFICATION PURPOSE ONLY

實地照片 SITE PHOTOS

本圖於2025年2月13日擬備，所根據的資料為攝於2025年1月16日的實地照片
PLAN PREPARED ON 13.2.2025
BASED ON SITE PHOTOS
TAKEN ON 16.1.2025

臨時商店及服務行業（木業零售商店）（為期5年）
元朗米埔丈量約份第104約多個地段和毗連政府土地
TEMPORARY SHOP AND SERVICES (WOODEN WARE RETAIL SHOP)
FOR A PERIOD OF 5 YEARS
VARIOUS LOTS IN D.D. 104 AND ADJOINING GOVERNMENT LAND,
MAI PO, YUEN LONG

規劃署
PLANNING
DEPARTMENT



參考編號
REFERENCE No.
A/YL-MP/385

圖 PLAN
A-4