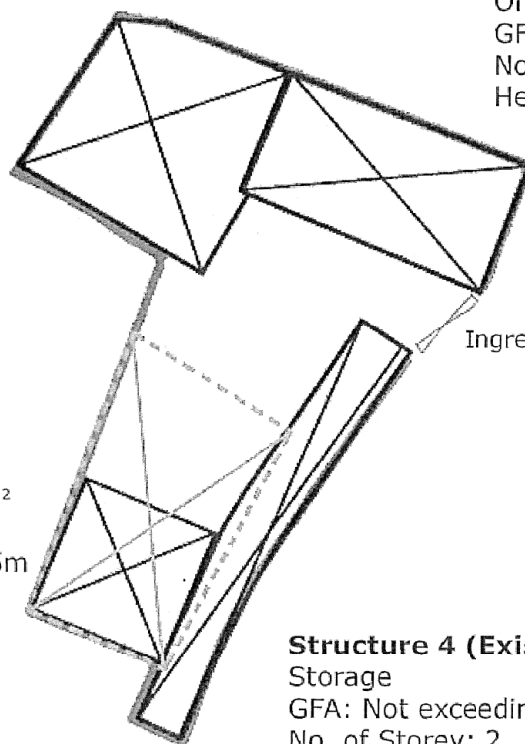


**Structure 2 (Existing)**

Storage  
GFA: Not exceeding 228m<sup>2</sup>  
No. of Storey: 2  
Height: Not exceeding 7.5m

**Structure 1 (Existing)**

Office and Reception  
GFA: Not exceeding 170m<sup>2</sup>  
No. of Storey: 2  
Height: Not exceeding 7.5m



**Structure 3 (Existing)**

Shop and Service  
GFA: Not exceeding 100m<sup>2</sup>  
No. of Storey: 2  
Height: Not exceeding 7.5m

**Structure 4 (Existing)**

Storage  
GFA: Not exceeding 130m<sup>2</sup>  
No. of Storey: 2  
Height: Not exceeding 7.5m

Project 項目名稱:

Proposed Temporary Shop and Services (Sales of Hardware Accessories) for a period of 3 Years at Lots 771(Part), 772(Part), 787(Part), 788(Part), 789(Part) in D.D. 115, Castle Peak Road - Yuen Long Section, Yuen Long, N.T.

Drawing Title 圖紙標題:

Layout Plan



Drawing No. 圖紙號碼:

Figure 1

Remarks 備註:



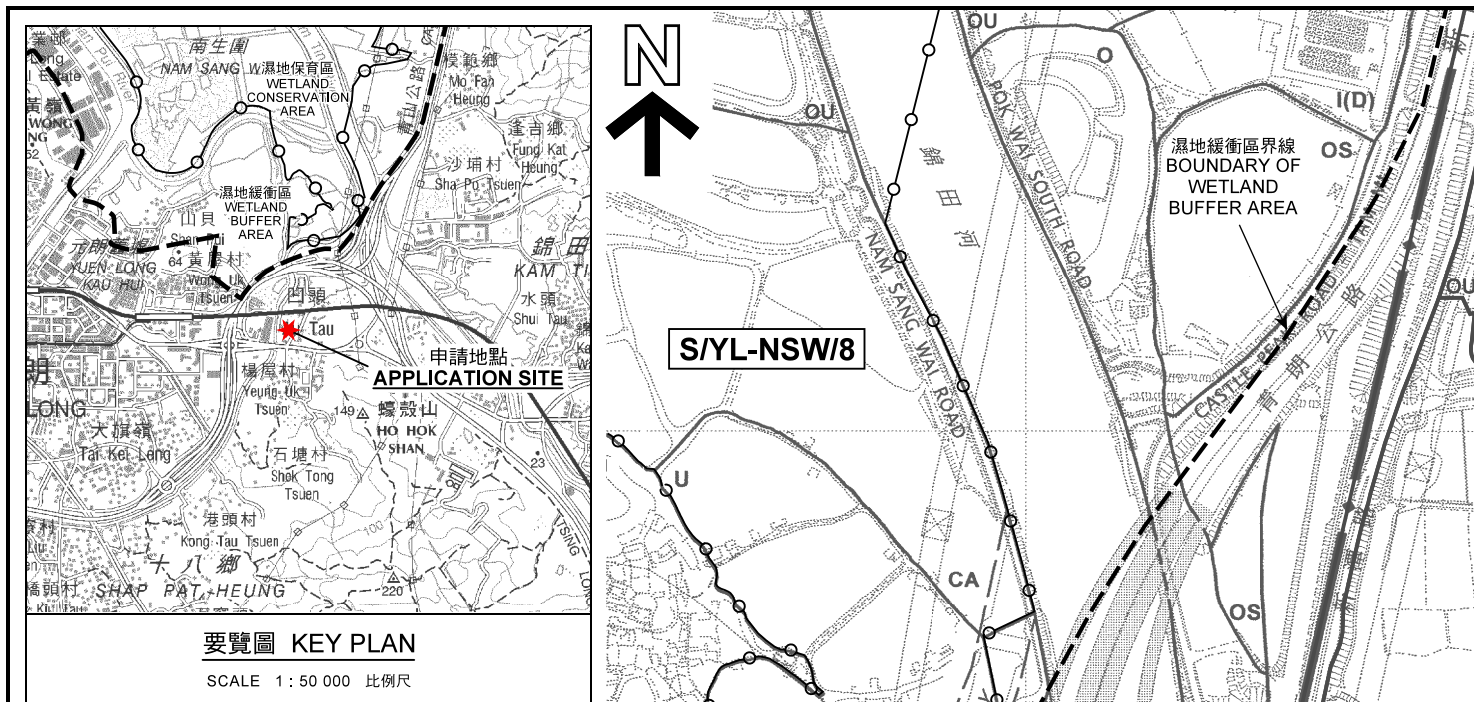
Metal Heat Shelter

Scale 比例:

(摘錄自申請人於 21.3.2022 呈交的申請書)  
(Extract from Applicant's  
Submission of 21.3.2022)

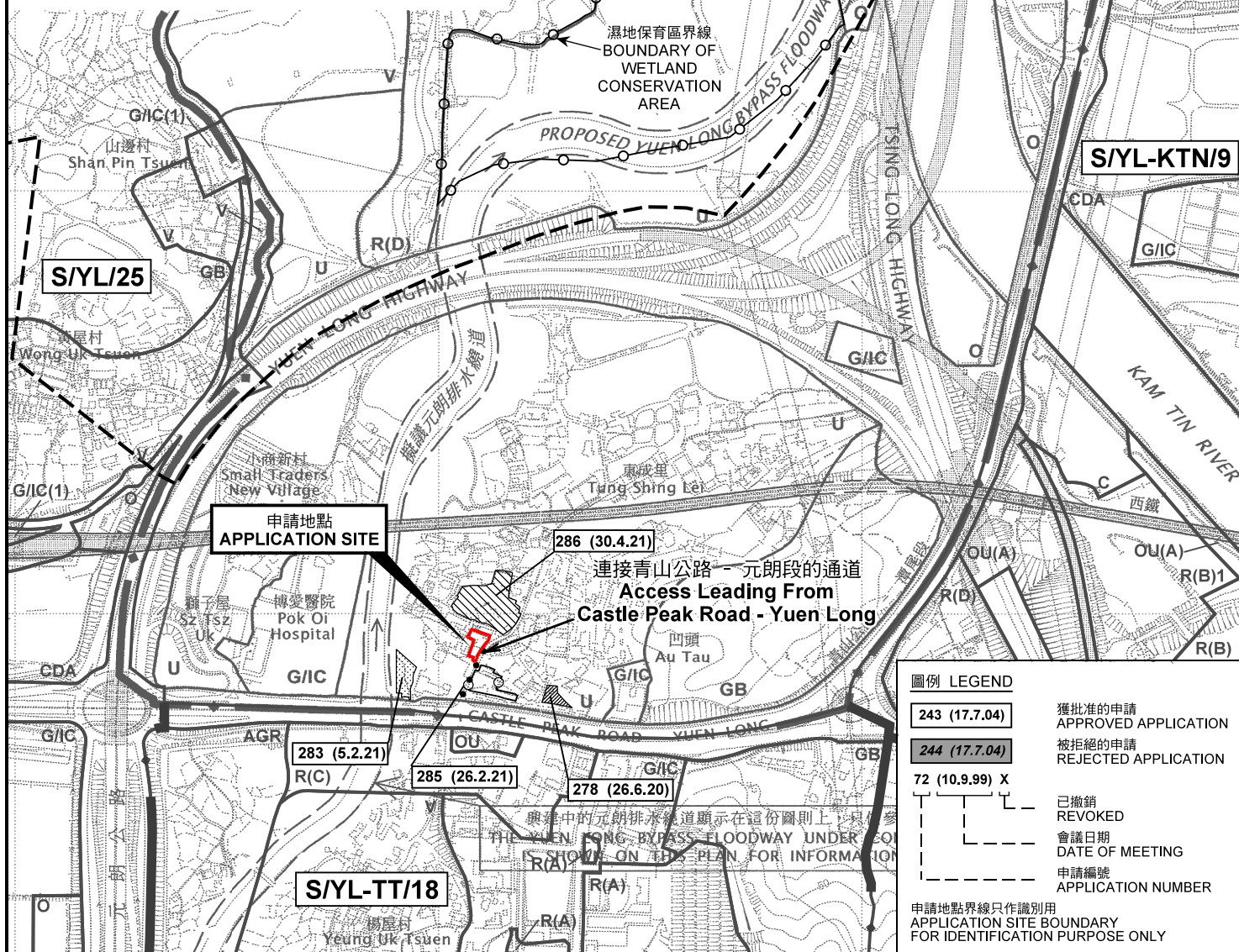
參考編號  
REFERENCE No.  
A/YL-NSW/296

繪圖 DRAWING  
A-1



要覽圖 KEY PLAN

SCALE 1 : 50 000 比例尺



圖例 LEGEND

243 (17.7.04)

獲批准的申請  
APPROVED APPLICATION

244 (17.7.04)

被拒絕的申請  
REJECTED APPLICATION

72 (10.9.99) X

已撤銷  
REVOKED

會議日期  
DATE OF MEETING

申請編號  
APPLICATION NUMBER

申請地點界線只作識別用  
APPLICATION SITE BOUNDARY  
FOR IDENTIFICATION PURPOSE ONLY

位置圖及同類申請 LOCATION PLAN WITH SIMILAR APPLICATIONS

本摘要圖於2022年5月13日擬備，  
所根據的資料為2006年10月17日  
核准的分區計劃大綱圖編號 S/YL-NSW/8  
EXTRACT PLAN PREPARED ON 13.5.2022  
BASED ON OUTLINE ZONING PLAN No.  
S/YL-NSW/8 APPROVED ON 17.10.2006

臨時商店及服務行業(五金零件銷售)  
元朗青山公路-元朗段丈量約份第115約多個地段  
TEMPORARY SHOP AND SERVICES (SALES OF HARDWARE ACCESSORIES)  
VARIOUS LOTS IN D.D. 115,  
CASTLE PEAK ROAD-YUEN LONG SECTION, YUEN LONG

SCALE 1 : 7 500 比例尺  
米 100 0 100 200 300 米  
METRES

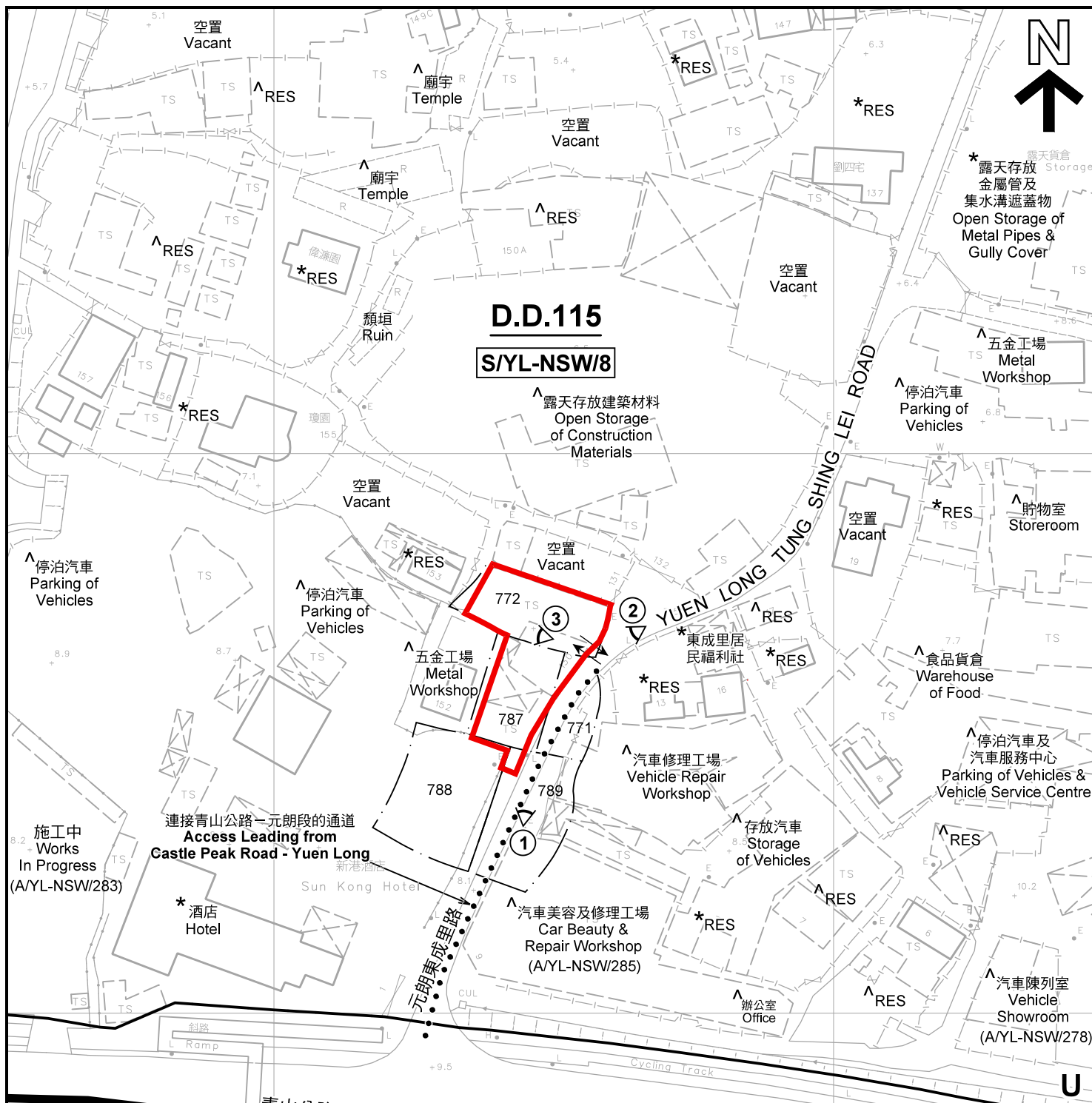
規劃署  
PLANNING  
DEPARTMENT



參考編號  
REFERENCE No.  
A/YL-NSW/296

圖 PLAN  
A-1





**註釋 Notes :**

(1) 2022年4月20日勘測的土地用途  
Land uses shown on this plan are in accordance with the land use survey conducted by the Planning Department on 20.4.2022

(2) \* 土地用途跟1992年2月勘測的土地用途一致  
Indicates that the use is the same as that revealed by the land use survey conducted by the Planning Department in Feb 1992

(3) ^ 土地用途跟1992年2月勘測的土地用途有別  
Indicates that the use is different from that revealed by the land use survey conducted by the Planning Department in Feb 1992

**圖例 LEGEND**

  申請地點(界線只作識別用)  
APPLICATION SITE (BOUNDARY FOR IDENTIFICATION PURPOSE ONLY)

OU 其他指定用途  
OTHER SPECIFIED USES

U 未決定用途  
UNDETERMINED

RES 住用構築物  
RESIDENTIAL STRUCTURES

① 實地照片的觀景點  
VIEWING POINT OF SITE PHOTO

↔ 入口/出口  
INGRESS / EGRESS

本摘要圖於2022年5月13日擬備，所根據的資料為測量圖編號 6-NE-6C 及 6-NW-10D  
EXTRACT PLAN PREPARED ON 13.5.2021  
BASED ON SURVEY SHEETS No. 6-NE-6C & 6-NW-10D

**平面圖 SITE PLAN**

臨時商店及服務行業(五金零件銷售)  
元朗青山公路-元朗段丈量約份第115約多個地段  
TEMPORARY SHOP AND SERVICES (SALES OF HARDWARE ACCESSORIES)  
VARIOUS LOTS IN D.D. 115,  
CASTLE PEAK ROAD-YUEN LONG SECTION, YUEN LONG

SCALE 1 : 1 000 比例尺

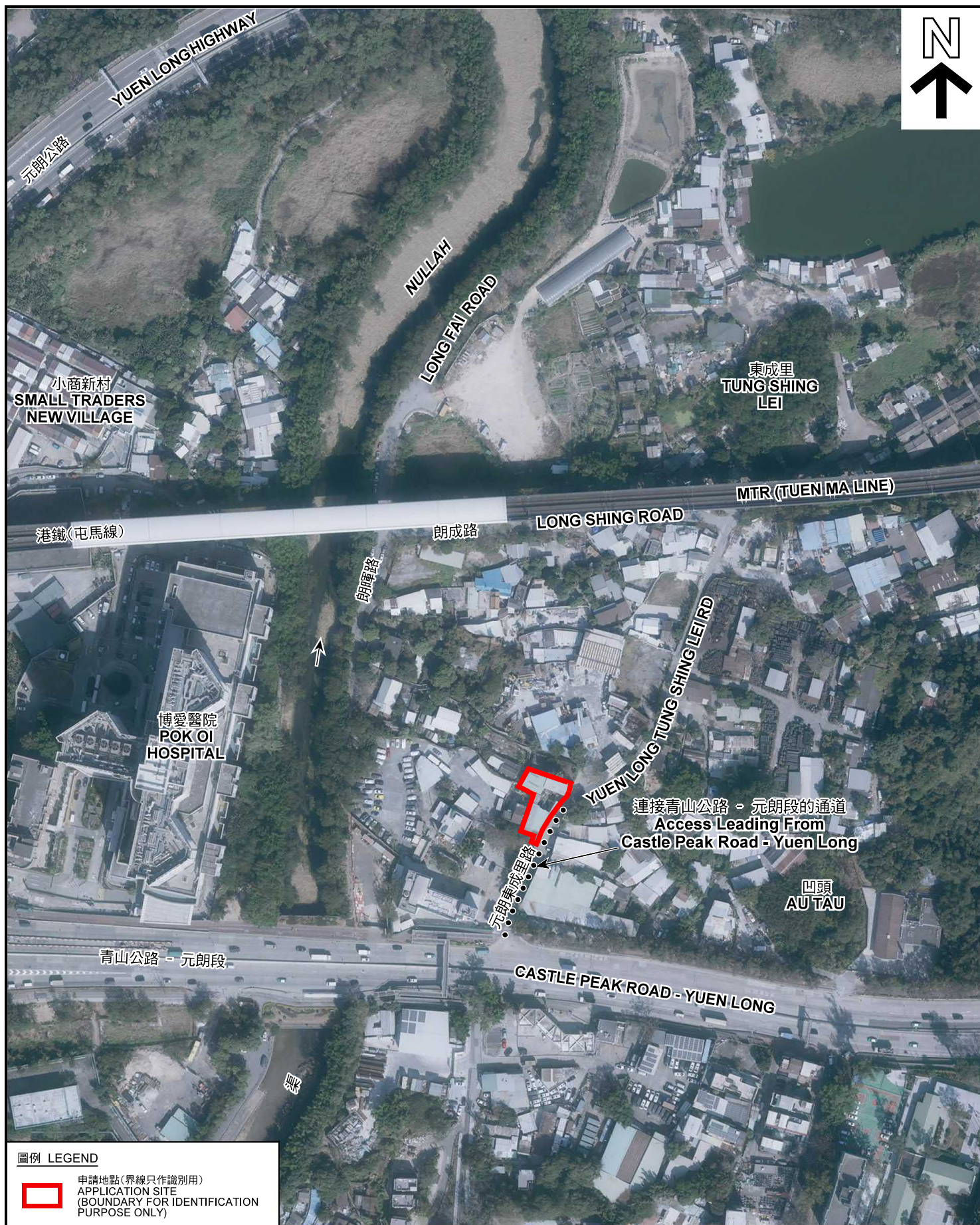
米 20 0 20 40 米  
METRES

**規劃署  
PLANNING  
DEPARTMENT**

參考編號  
REFERENCE No.  
A/YL-NSW/296

**圖 PLAN  
A-2**





圖例 LEGEND



申請地點(界線只作識別用)  
APPLICATION SITE  
(BOUNDARY FOR IDENTIFICATION  
PURPOSE ONLY)

本摘要圖於2022年4月25日擬備，所根據的資料為地政總署於2021年1月19日拍得的航攝照片編號 E130827C  
EXTRACT PLAN PREPARED ON 25.4.2022  
BASED ON AERIAL PHOTO No.  
E130827C TAKEN ON 19.1.2021  
BY LANDS DEPARTMENT

航攝照片 AERIAL PHOTO

臨時商店及服務行業(五金零件銷售)  
元朗青山公路-元朗段丈量約份第115約多個地段  
TEMPORARY SHOP AND SERVICES (SALES OF HARDWARE ACCESSORIES)  
VARIOUS LOTS IN D.D. 115,  
CASTLE PEAK ROAD-YUEN LONG SECTION, YUEN LONG

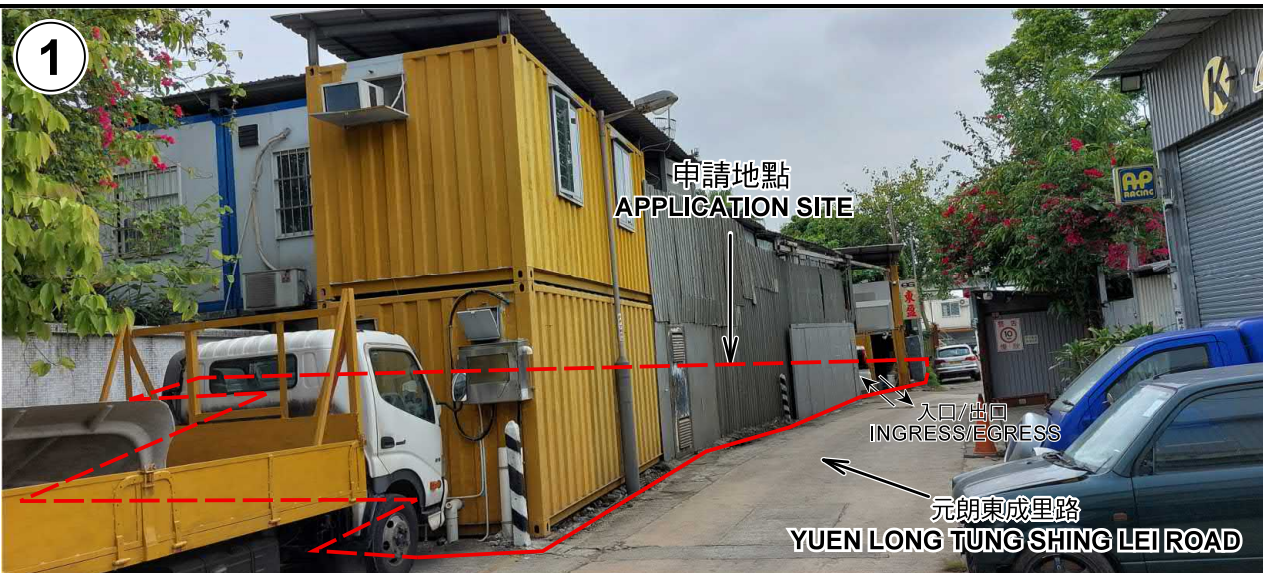
規劃署  
PLANNING  
DEPARTMENT



參考編號  
REFERENCE No.  
A/YL-NSW/296

圖 PLAN  
A-3





申請地點界線只作識別用 APPLICATION SITE BOUNDARY FOR IDENTIFICATION PURPOSE ONLY

### 實地照片 SITE PHOTOS

臨時商店及服務行業(五金零件銷售)  
元朗青山公路-元朗段丈量約份第115約多個地段  
TEMPORARY SHOP AND SERVICES (SALES OF HARDWARE ACCESSORIES)  
VARIOUS LOTS IN D.D. 115  
CASTLE PEAK ROAD-YUEN LONG SECTION, YUEN LONG

規劃署  
PLANNING  
DEPARTMENT



參考編號  
REFERENCE No.  
A/YL-NSW/296

圖 PLAN  
A-4

本圖於2022年5月13日擬備，所根據的資料為攝於2022年4月20日的實地照片  
PLAN PREPARED ON 13.5.2022  
BASED ON SITE PHOTOS  
TAKEN ON 20.4.2022