

**Structure 1**

Shop and Service

GFA: Not exceeding 38m<sup>2</sup>

No. of Storey: 1

Height: Not exceeding 3m

**Structure 3**

Shop and Service

GFA: Not exceeding 38m<sup>2</sup>

No. of Storey: 1

Height: Not exceeding 3m

Ingress/Egress

**Structure 5**

Shop and Service

GFA: Not exceeding 38m<sup>2</sup>

No. of Storey: 1

Height: Not exceeding 3m

**Structure 2**

Shop and Service

GFA: Not exceeding 38m<sup>2</sup>

No. of storey: 1

Height: Not exceeding 3m

**Structure 4**

Shop and Service

GFA: Not exceeding 38m<sup>2</sup>

No. of storey: 1

Height: Not exceeding 3m

**Structure 6**

Shop and Service

GFA: Not exceeding 38m<sup>2</sup>

No. of storey: 1

Height: Not exceeding 3m

**Structure 7**

Shop and Service

GFA: Not exceeding 38m<sup>2</sup>

No. of Storey: 1

Height: Not exceeding 3m

**Structure 9**

Shop and Service

GFA: Not exceeding 38m<sup>2</sup>

No. of Storey: 1

Height: Not exceeding 3m

**Structure 8**

Shop and Service

GFA: Not exceeding 38m<sup>2</sup>

No. of storey: 1

Height: Not exceeding 3m

Project 項目名稱:

Proposed Temporary Shop and  
Services for a Period of 3 Years at  
Lot 3250 S.B ss.46(Part) in D.D. 104,  
San Tin, Yuen Long, N.T.

Drawing Title 圖紙標題:

Layout Plan

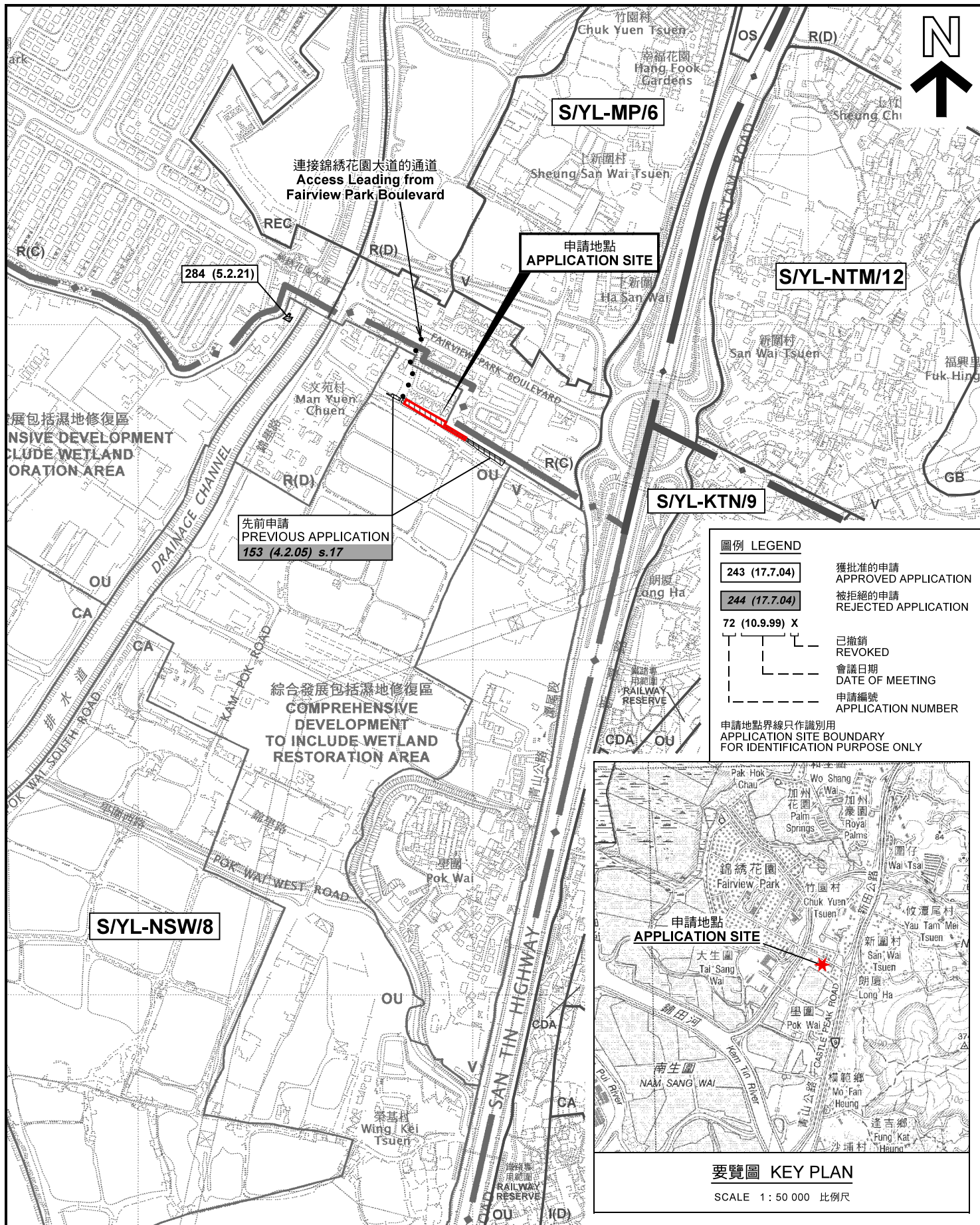
Drawing No. 圖號:

Figure 3



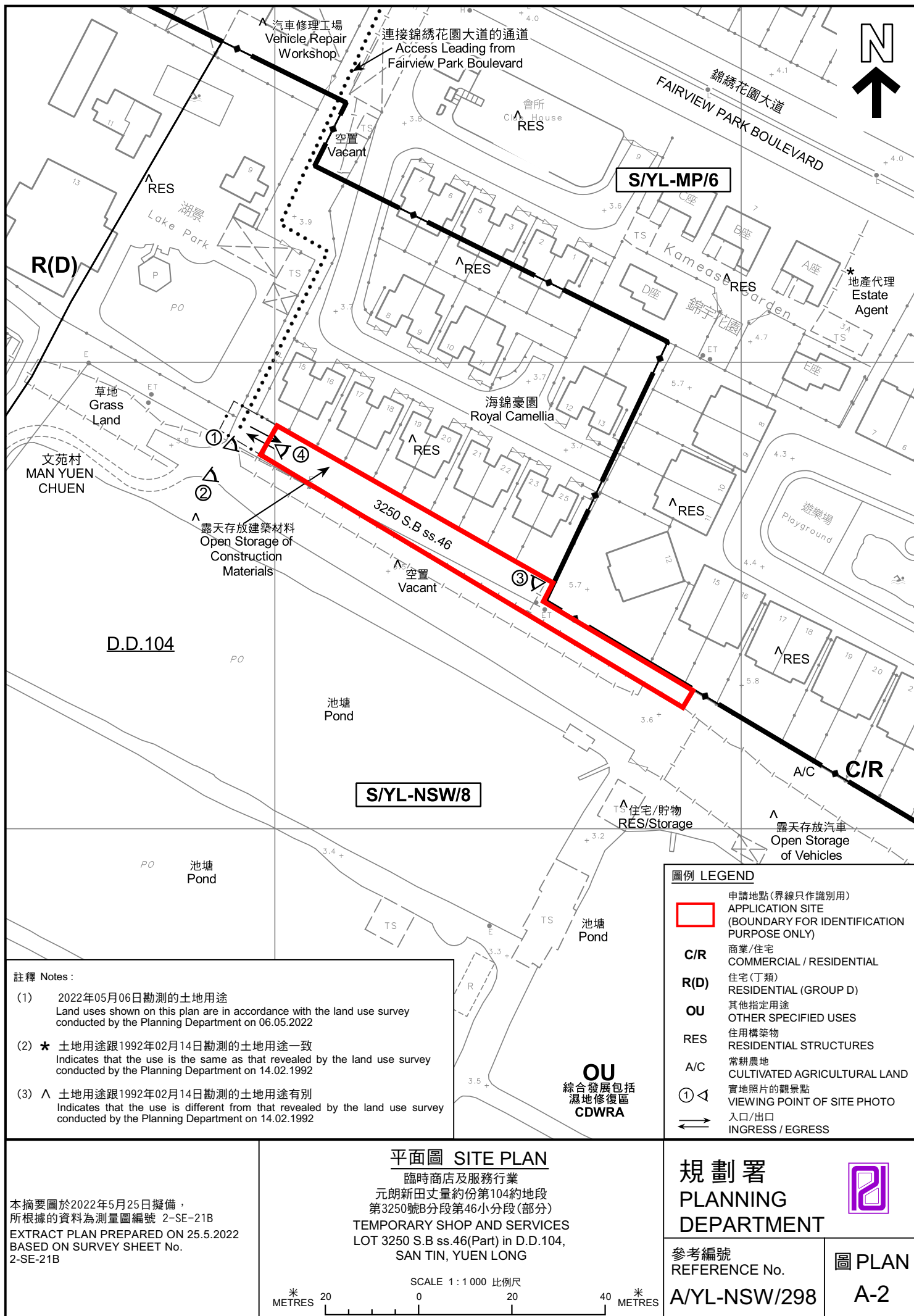
Remarks 備註:

Scale 比例:



<p>本摘要圖於2022年6月6日擬備， 所根據的資料為於2006年10月17日 核准的分區計劃大綱圖編號 S/YL-NSW/8 EXTRACT PLAN PREPARED ON 6.6.2022 BASED ON OUTLINE ZONING PLAN No. S/YL-NSW/8 APPROVED ON 17.10.2006</p>	<p>位置圖及同類申請 LOCATION PLAN WITH SIMILAR APPLICATION</p> <p>臨時商店及服務行業 元朗新田丈量約份第104約地段 第3250號B分段第46小分段(部分) TEMPORARY SHOP AND SERVICES LOT 3250 S.B ss.46(PART) IN D.D.104, SAN TIN, YUEN LONG</p> <p>SCALE 1 : 7 500 比例尺</p> <p>米 100 0 100 200 300 米 METRES</p>	<p>規劃署 PLANNING DEPARTMENT</p> <p>參考編號 REFERENCE No. A/YL-NSW/298</p>	<p>圖 PLAN A-1</p>
	<p>要覽圖 KEY PLAN</p> <p>SCALE 1 : 50 000 比例尺</p>		









#### 圖例 LEGEND

申請地點 (界線只作識別用)  
APPLICATION SITE (BOUNDARY FOR IDENTIFICATION PURPOSE ONLY)

本摘要圖於2022年5月27日擬備，  
所根據的資料為地政總署於2021年01月15日  
拍得的航攝照片編號E127164C  
EXTRACT PLAN PREPARED ON 27.5.2022  
BASED ON AERIAL PHOTO No.  
E127164C TAKEN ON 15.01.2021  
BY LANDS DEPARTMENT

#### 航攝照片 AERIAL PHOTO

臨時商店及服務行業  
元朗新田丈量約份第104約地段  
第3250號B分段第46小分段(部分)  
TEMPORARY SHOP AND SERVICES  
LOT 3250 S.B ss.46(Part) in D.D.104,  
SAN TIN, YUEN LONG

規劃署  
PLANNING  
DEPARTMENT



參考編號  
REFERENCE No.  
A/YL-NSW/298

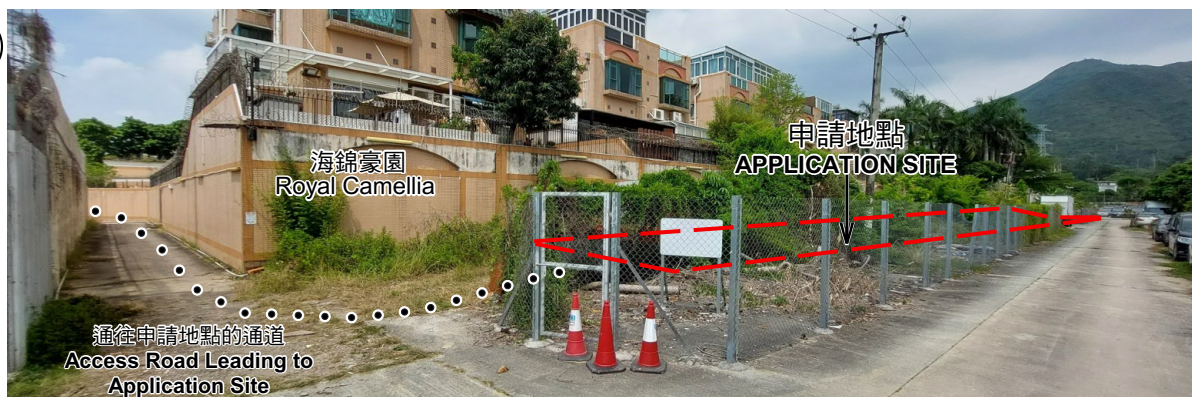
圖 PLAN  
A-3



1



2



3



4



申請地點界線只作識別用 APPLICATION SITE BOUNDARY FOR IDENTIFICATION PURPOSE ONLY

### 實地照片 SITE PHOTOS

臨時商店及服務行業  
元朗新田丈量約份第104約地段  
第3250號B分段第46小分段(部分)  
TEMPORARY SHOP AND SERVICES  
LOT 3250 S.B ss.46(Part) in D.D.104,  
SAN TIN, YUEN LONG

本圖於2022年6月7日擬備，所根據的  
資料為攝於2022年5月6日的實地照片  
PLAN PREPARED ON 7.6.2022  
BASED ON SITE PHOTOS  
TAKEN ON 6.5.2022

規劃署  
PLANNING  
DEPARTMENT



參考編號  
REFERENCE No.  
A/YL-NSW/298

圖 PLAN  
A-4