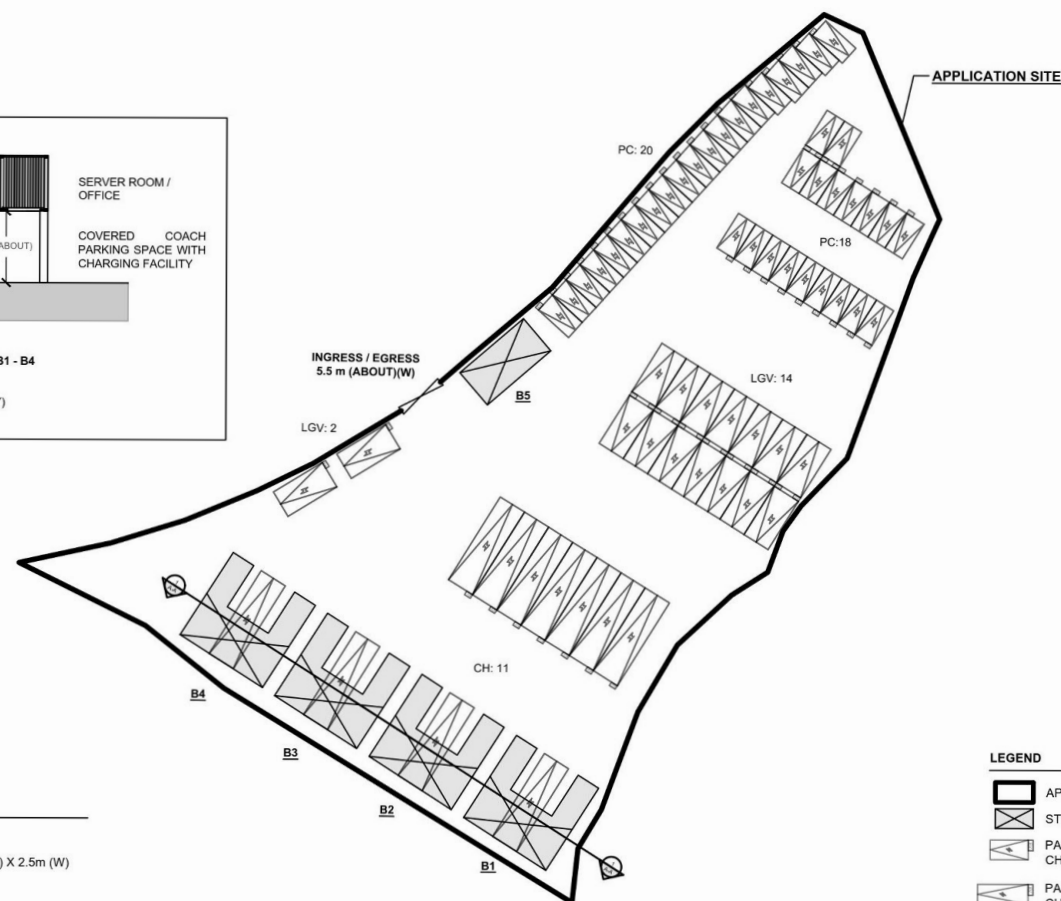
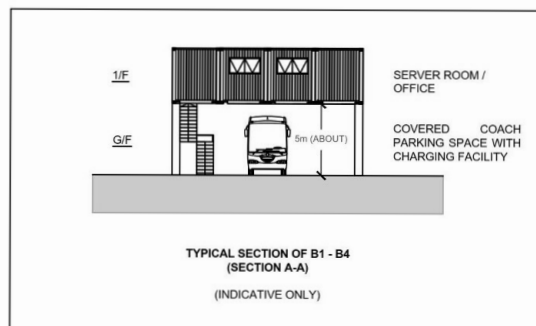
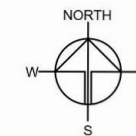


# DEVELOPMENT PARAMETERS

APPLICATION SITE AREA	: 4,736 m <sup>2</sup>	(ABOUT)
COVERED AREA	: 486 m <sup>2</sup>	(ABOUT)
UNCOVERED AREA	: 4,250 m <sup>2</sup>	(ABOUT)
PLOT RATIO	: 0.19	(ABOUT)
SITE COVERAGE	: 10 %	(ABOUT)
NO. OF STRUCTURE	: 7	
DOMESTIC GFA	: NOT APPLICABLE	
NON-DOMESTIC GFA	: 918 m <sup>2</sup>	(ABOUT)
TOTAL GFA	: 918 m <sup>2</sup>	(ABOUT)
BUILDING HEIGHT	: 3.5 m - 8 m	(ABOUT)
NO. OF STOREY	: 1 - 2	

STRUCTURE	USE	COVERED AREA	GFA	BUILDING HEIGHT
B1 (G/F)	COVERED PARKING SPACE	108 m <sup>2</sup> (ABOUT)	108 m <sup>2</sup> (ABOUT)	8 m (ABOUT)(2-STOREY)
B2 (G/F)	SERVER ROOM	108 m <sup>2</sup> (ABOUT)	108 m <sup>2</sup> (ABOUT)	8 m (ABOUT)(2-STOREY)
B3 (G/F)	COVERED PARKING SPACE	108 m <sup>2</sup> (ABOUT)	108 m <sup>2</sup> (ABOUT)	8 m (ABOUT)(2-STOREY)
B4 (G/F)	SERVER ROOM	108 m <sup>2</sup> (ABOUT)	108 m <sup>2</sup> (ABOUT)	8 m (ABOUT)(2-STOREY)
B5 (1/F)	SITE OFFICE	54 m <sup>2</sup> (ABOUT)	54 m <sup>2</sup> (ABOUT)	3.5 m (ABOUT)(1-STOREY)
TOTAL		486 m <sup>2</sup> (ABOUT)	918 m <sup>2</sup> (ABOUT)	



## PARKING PROVISIONS

NO. OF PRIVATE CAR AND TAXI PARKING SPACE WITH EV CHARGER	: 38
DIMENSION OF PARKING SPACE	: 5m (L) X 2.5m (W)
NO. OF LIGHT GOODS VEHICLE PARKING SPACE WITH EV CHARGER	: 16
DIMENSION OF PARKING SPACE	: 3.5m (L) X 7m (W)
NO. OF COACH PARKING SPACE WITH EV CHARGER	: 11
DIMENSION OF PARKING SPACE	: 12m (L) X 3.5m (W)

## LEGEND

[Symbol]	APPLICATION SITE
[Symbol]	STRUCTURE
[Symbol]	PARKING SPACE WITH EV CHARGER (PC / TAXI)
[Symbol]	PARKING SPACE WITH EV CHARGER (LGV)
[Symbol]	PARKING SPACE WITH EV CHARGER (COACH)
[Symbol]	INGRESS / EGRESS

## PLANNING CONSULTANT



## PROJECT

PROPOSED TEMPORARY PUBLIC VEHICLE PARK (EXCLUDING CONTAINER VEHICLE) WITH ANCILLARY ELECTRIC VEHICLE CHARGING FACILITY AND OFFICE FOR A PERIOD OF 5 YEARS AND ASSOCIATED FILLING OF LAND

## SITE LOCATION

VARIOUS LOTS IN D.D. 104, POK WAI, YUEN LONG, NEW TERRITORIES

## SCALE

1:100 @ A4

DRAWN BY MN DATE 18.8.2023

CHECKED BY DATE

APPROVED BY DATE

## DWG. TITLE

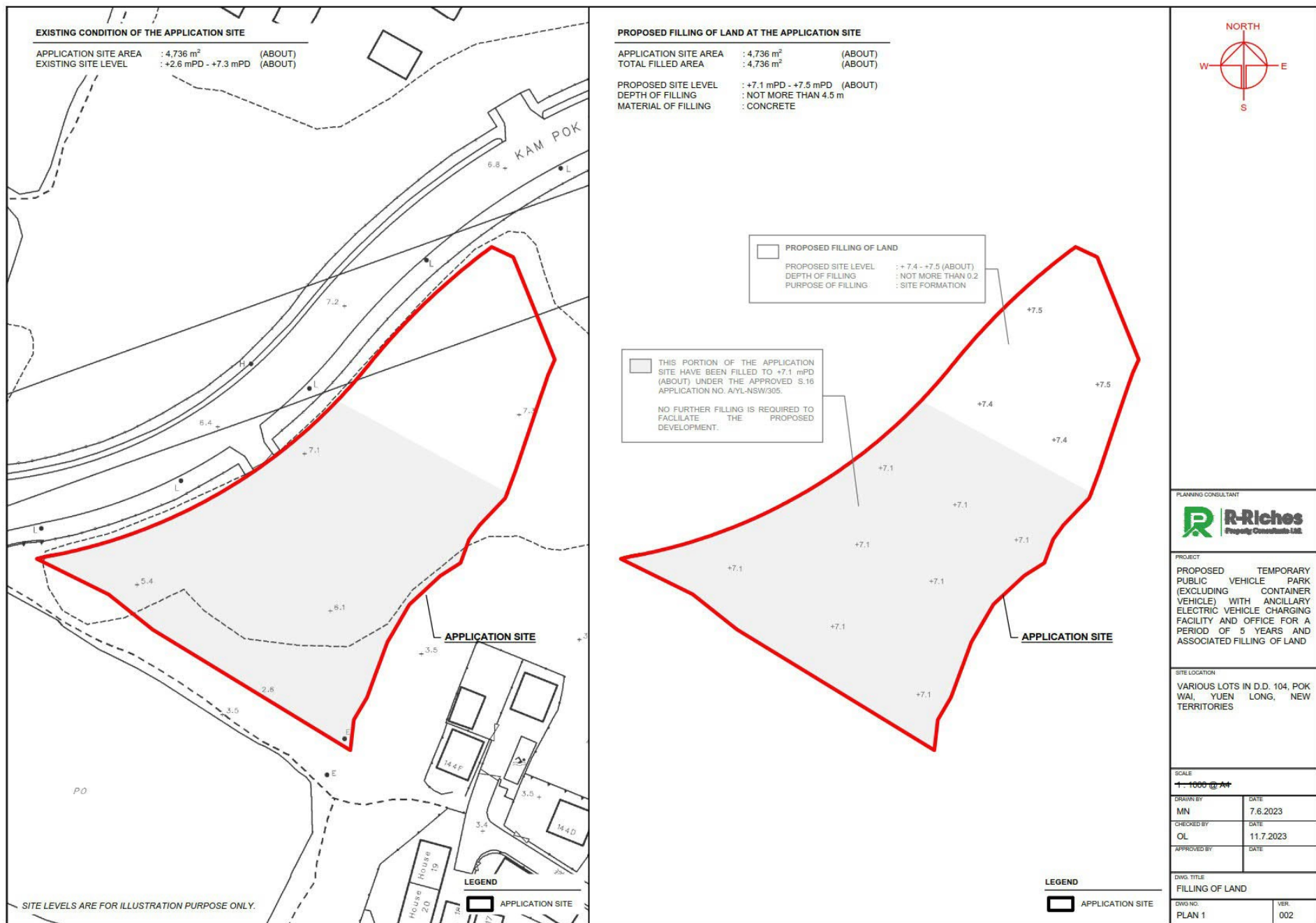
LAYOUT PLAN

DWG NO. PLAN 1 VER. 003

(摘錄自申請人於28. 8. 2023呈交的進一步資料)  
(Extract from Applicant's Further Information Submitted on 28.8.2023)

參考編號  
REFERENCE No.  
A/YL-NSW/318

繪圖  
DRAWING  
A - 1



(摘錄自申請人於 3.7.2023 呈交的申請書)  
 (Extract from Applicant's  
 Submission of 3.7.2023)

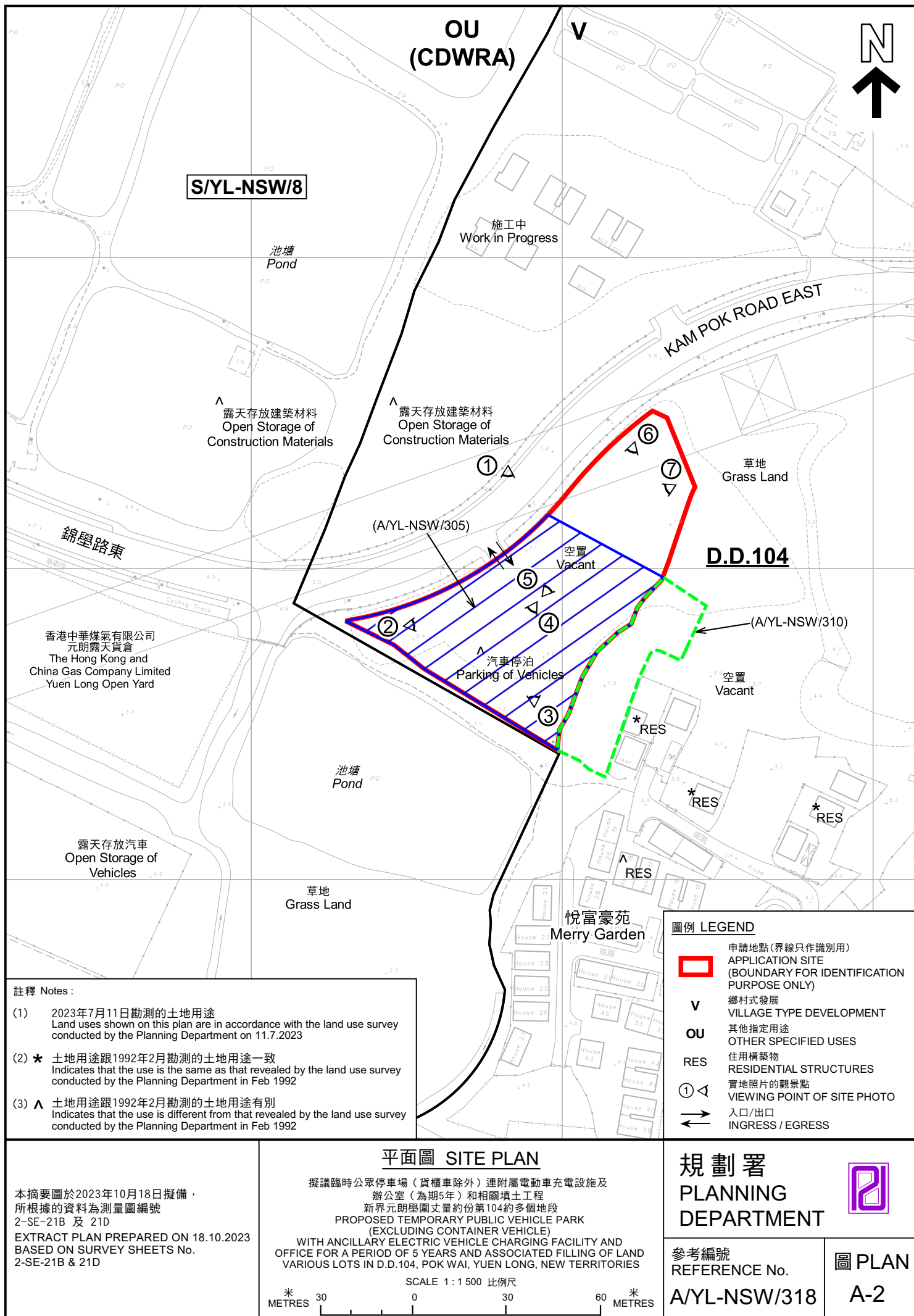
參考編號  
 REFERENCE No.  
 A/YL-NSW/318

繪圖  
 DRAWING  
 A - 2













#### 圖例 LEGEND



申請地點 (界線只作識別用)  
APPLICATION SITE (BOUNDARY FOR  
IDENTIFICATION PURPOSE ONLY)

#### 航攝照片 AERIAL PHOTO

擬議臨時公眾停車場 (貨櫃車除外) 連附屬電動車充電設施及  
辦公室 (為期5年) 和相關填土工程  
新界元朗區丈量約份第104約多個地段  
PROPOSED TEMPORARY PUBLIC VEHICLE PARK  
(EXCLUDING CONTAINER VEHICLE)  
WITH ANCILLARY ELECTRIC VEHICLE CHARGING FACILITY AND  
OFFICE FOR A PERIOD OF 5 YEARS AND ASSOCIATED FILLING OF LAND  
VARIOUS LOTS IN D.D.104, POK WAI, YUEN LONG, NEW TERRITORIES

規劃署  
PLANNING  
DEPARTMENT



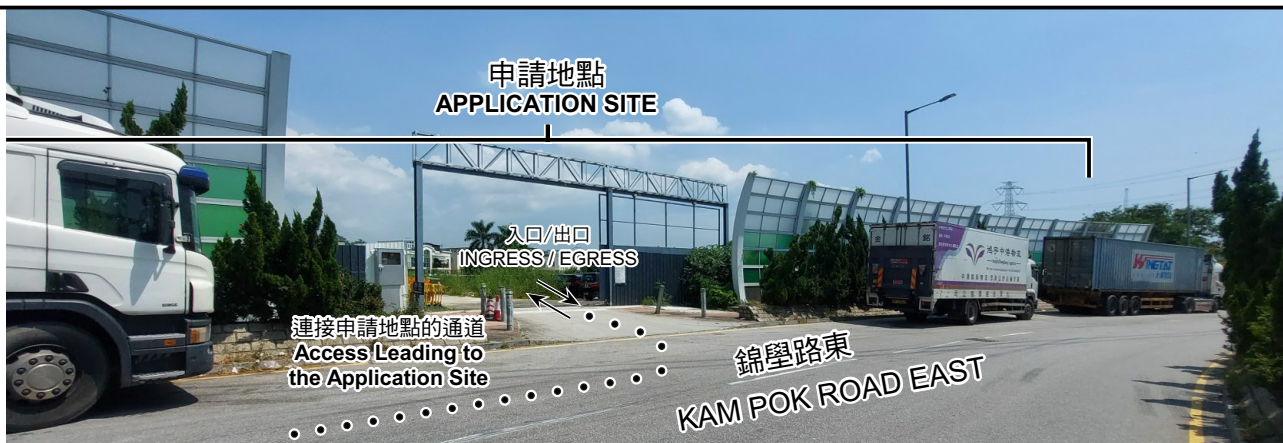
參考編號  
REFERENCE No.  
A/YL-NSW/318

圖 PLAN  
A-3

本摘要圖於2023年10月18日擬備，  
所根據的資料為地政總署於2022年3月8日  
拍得的航攝照片編號 E153015C  
EXTRACT PLAN PREPARED ON 18.10.2023  
BASED ON AERIAL PHOTO No.  
E153015C TAKEN ON 8.3.2022  
BY LANDS DEPARTMENT



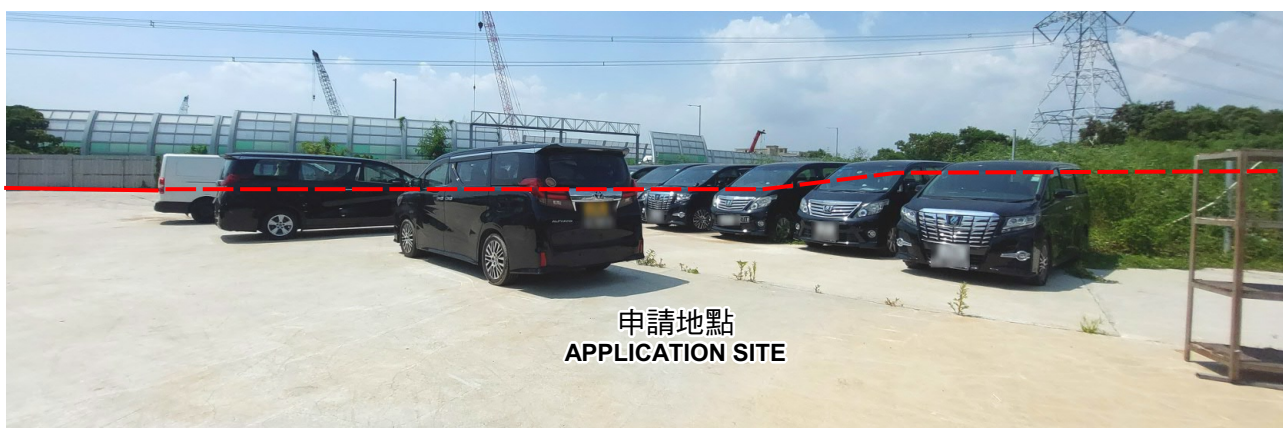
1



2



3



4



申請地點界線只作識別用 APPLICATION SITE BOUNDARY FOR IDENTIFICATION PURPOSE ONLY

### 實地照片 SITE PHOTOS

擬議臨時公眾停車場（貨櫃車除外）連附屬電動車充電設施及  
辦公室（為期5年）和相關填土工程  
新界元朗區丈量約份第104約多個地段  
PROPOSED TEMPORARY PUBLIC VEHICLE PARK  
(EXCLUDING CONTAINER VEHICLE)  
WITH ANCILLARY ELECTRIC VEHICLE CHARGING FACILITY AND  
OFFICE FOR A PERIOD OF 5 YEARS AND ASSOCIATED FILLING OF LAND  
VARIOUS LOTS IN D.D.104, POK WAI, YUEN LONG, NEW TERRITORIES

規劃署  
PLANNING  
DEPARTMENT



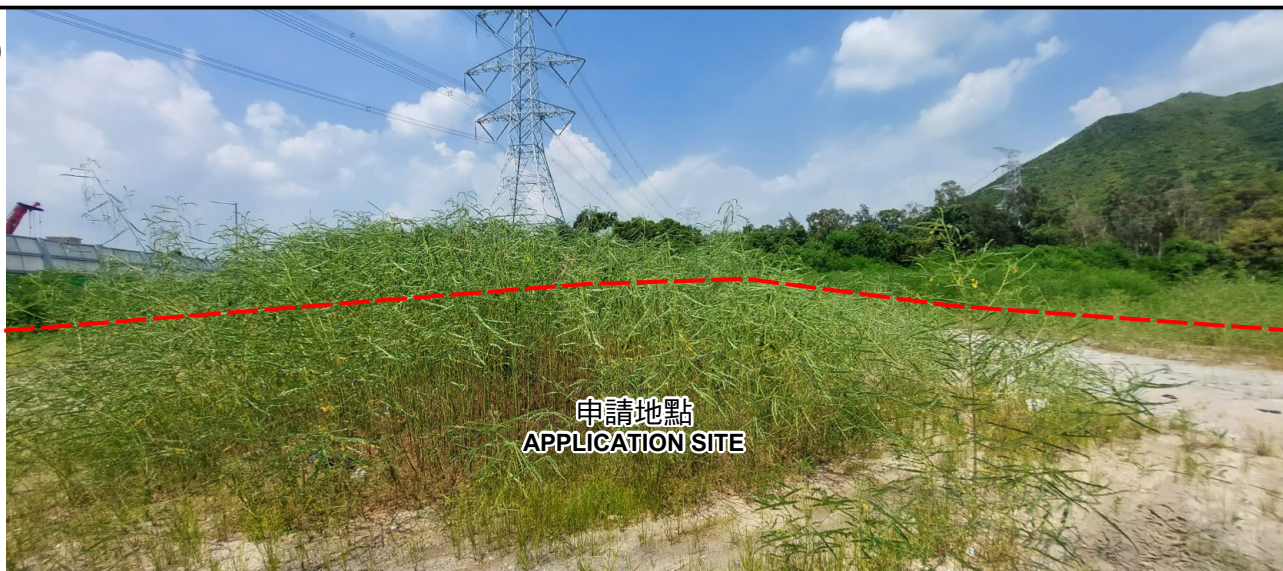
參考編號  
REFERENCE No.  
A/YL-NSW/318

圖 PLAN  
A-4a

本圖於2023年10月18日擬備，所根據的  
資料為攝於2023年7月14日的實地照片  
PLAN PREPARED ON 18.10.2023  
BASED ON SITE PHOTOS  
TAKEN ON 14.7.2023



5



申請地點  
APPLICATION SITE

6



申請地點  
APPLICATION SITE

7



申請地點  
APPLICATION SITE

申請地點界線只作識別用 APPLICATION SITE BOUNDARY FOR IDENTIFICATION PURPOSE ONLY

### 實地照片 SITE PHOTOS

本圖於2023年10月18日擬備，所根據的資料為攝於2023年7月14日的實地照片  
PLAN PREPARED ON 18.10.2023  
BASED ON SITE PHOTOS  
TAKEN ON 14.7.2023

擬議臨時公眾停車場（貨櫃車除外）連附屬電動車充電設施及辦公室（為期5年）和相關填土工程  
PROPOSED TEMPORARY PUBLIC VEHICLE PARK  
(EXCLUDING CONTAINER VEHICLE)  
WITH ANCILLARY ELECTRIC VEHICLE CHARGING FACILITY AND OFFICE FOR A PERIOD OF 5 YEARS AND ASSOCIATED FILLING OF LAND  
VARIOUS LOTS IN D.D.104, POK WAI, YUEN LONG, NEW TERRITORIES

規 劃 署  
PLANNING  
DEPARTMENT



參考編號  
REFERENCE No.  
A/YL-NSW/318

圖 PLAN  
A-4b