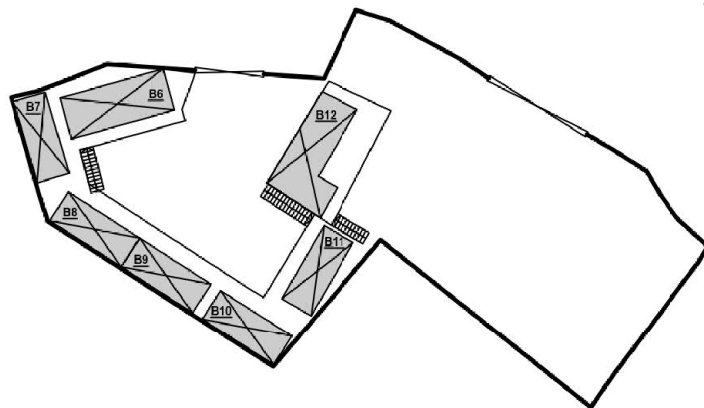


# DEVELOPMENT PARAMETERS

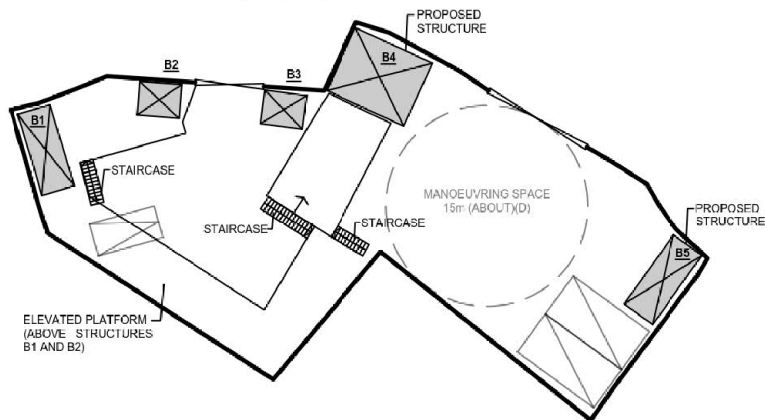
APPLICATION SITE AREA	: 760m <sup>2</sup> (ABOUT)
COVERED AREA	: 365.8m <sup>2</sup> (ABOUT)
UNCOVERED AREA	: 394.2m <sup>2</sup> (ABOUT)
PLOT RATIO	: 0.9 (ABOUT)
SITE COVERAGE	: 48% (ABOUT)
NO. OF STRUCTURE	: 13
DOMESTIC GFA	: N/A
NON-DOMESTIC GFA	: 675.75m <sup>2</sup> (ABOUT)
BUILDING HEIGHT	: 2.6m - 5.6m (ABOUT)
NO. OF STOREY	: 1 - 2

STRUCTURE	PROPOSED USE	COVERED AREA	GFA	BUILDING HEIGHT
B1	STORAGE OF METALWARE GOODS	COVERED BY B13	COVERED BY B13	2.6m (ABOUT)(1-STOREY)
B2	STORAGE OF METALWARE GOODS	COVERED BY B13	COVERED BY B13	2.6m (ABOUT)(1-STOREY)
B3	CARETAKER OFFICE	8m <sup>2</sup> (ABOUT)	8m <sup>2</sup> (ABOUT)	2.6m (ABOUT)(1-STOREY)
B4	METALWARE GOODS SHOP*	32.5m <sup>2</sup> (ABOUT)	32.5m <sup>2</sup> (ABOUT)	2.6m (ABOUT)(1-STOREY)
B5	STORAGE OF METALWARE GOODS*	15.25m <sup>2</sup> (ABOUT)	15.25m <sup>2</sup> (ABOUT)	2.6m (ABOUT)(1-STOREY)
B6	METALWARE GOODS SHOP	COVERED BY B13	COVERED BY B13	2.6m (ABOUT)(1-STOREY)
B7	METALWARE GOODS SHOP	COVERED BY B13	COVERED BY B13	2.6m (ABOUT)(1-STOREY)
B8	METALWARE GOODS SHOP	COVERED BY B13	COVERED BY B13	2.6m (ABOUT)(1-STOREY)
B9	METALWARE GOODS SHOP	COVERED BY B13	COVERED BY B13	2.6m (ABOUT)(1-STOREY)
B10	METALWARE GOODS SHOP	COVERED BY B13	COVERED BY B13	2.6m (ABOUT)(1-STOREY)
B11	METALWARE GOODS SHOP	COVERED BY B13	COVERED BY B13	2.6m (ABOUT)(1-STOREY)
B12	SITE OFFICE	COVERED BY B13	COVERED BY B13	2.6m (ABOUT)(1-STOREY)
B13	RAIN SHELTER (CANOPY)	310m <sup>2</sup> (ABOUT)	620m <sup>2</sup> (ABOUT)	5.6m (ABOUT)(2-STOREY)
TOTAL		365.8m <sup>2</sup> (ABOUT)	675.75m <sup>2</sup> (ABOUT)	

\* STRUCTURES B4 AND B5 ARE PROPOSED STRUCTURES.  
THE REMAINING STRUCTURE B1 TO B3, B6 TO B13 ARE EXISTING STRUCTURE



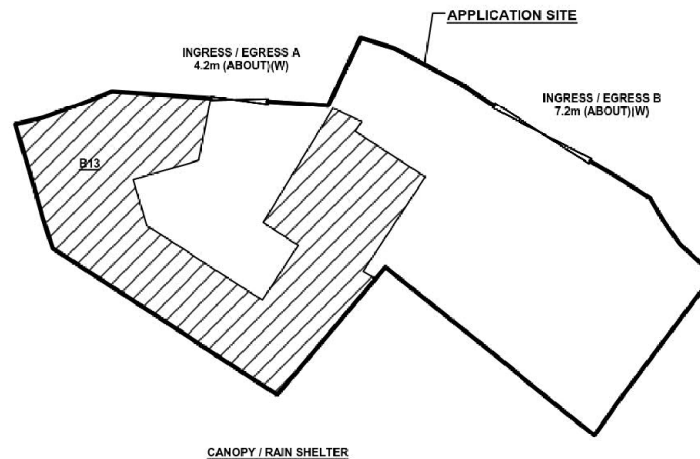
FIRST FLOOR



GROUND FLOOR

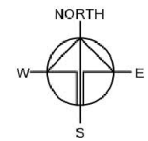
## PARKING AND LOADING / UNLOADING PROVISIONS

NO. OF PRIVATE CAR PARKING SPACE	: 1
DIMENSION OF PARKING SPACE	: 2.5m (W) x 5m (L)
NO. OF L/L SPACE FOR LGV	: 2
DIMENSION OF L/L SPACE	: 3.5m (W) x 7m (L)



## LEGEND

[Symbol]	APPLICATION SITE
[Symbol]	STRUCTURE (ENCLOSED)
[Symbol]	STRUCTURE (CANOPY)
[Symbol]	INGRESS / EGRESS
[Symbol]	PARKING SPACE
[Symbol]	LOADING / UNLOADING SPACE



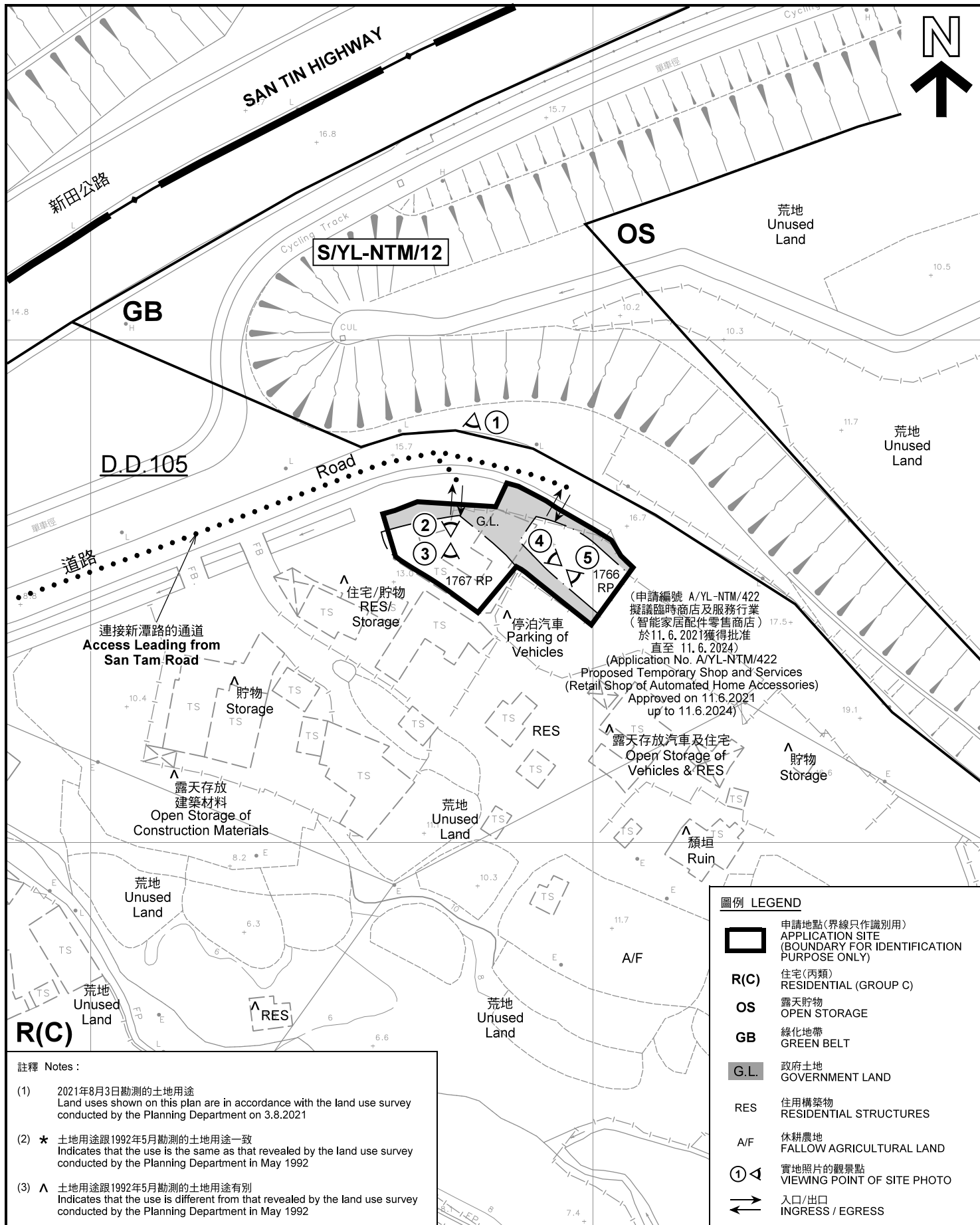
Drawing No.	Ver.
PLAN 1	01
Project	TEMPORARY SHOP AND SERVICES FOR A PERIOD OF 3 YEARS
Location	LOTS 1766 RP AND 1767 RP (PART) IN D.D. 105 AND ADJOINING GOVERNMENT LAND, NGAU TAM MEI, YUEN LONG
Drawing Title	LAYOUT PLAN
Scale of A4	1:500
Drawn	Date
	2.8.2021
Revised	Date
	8.9.2021

(摘錄自申請人於 9.9.2021 呈交的進一步資料)  
(Extract from Applicant's Further  
Information Submitted on 9.9.2021)

參考編號  
REFERENCE No.  
A/YL-NTM/425

繪圖 DRAWING  
A-1





註釋 Notes:

- (1) 2021年8月3日勘測的土地用途  
Land uses shown on this plan are in accordance with the land use survey conducted by the Planning Department on 3.8.2021
- (2) \* 土地用途跟1992年5月勘測的土地用途一致  
Indicates that the use is the same as that revealed by the land use survey conducted by the Planning Department in May 1992
- (3) ^ 土地用途跟1992年5月勘測的土地用途有別  
Indicates that the use is different from that revealed by the land use survey conducted by the Planning Department in May 1992

平面圖 SITE PLAN

臨時商店及服務行業（為期3年）  
元朗牛潭尾丈量約份第105約  
地段第1766號餘段及第1767號餘段（部分）和毗連政府土地  
TEMPORARY SHOP AND SERVICES  
FOR A PERIOD OF 3 YEARS  
LOTS 1766 RP AND 1767 RP (PART) IN D.D. 105 AND  
ADJOINING GOVERNMENT LAND, NGAU TAM MEI, YUEN LONG

SCALE 1 : 1 000 比例尺

米 20 0 20 40 米  
METRES

規劃署  
PLANNING  
DEPARTMENT



參考編號  
REFERENCE No.  
A/YL-NTM/425

圖 PLAN  
A-2





圖例 LEGEND



申請地點 (界線只作識別用)  
APPLICATION SITE  
(BOUNDARY FOR IDENTIFICATION  
PURPOSE ONLY)

本摘要圖於2021年9月8日擬備，所根據的資料為地政總署於2021年1月14日拍得的航攝照片編號 E125120C  
EXTRACT PLAN PREPARED ON 8.9.2021  
BASED ON AERIAL PHOTO No.  
E125120C TAKEN ON 14.1.2021  
BY LANDS DEPARTMENT

航攝照片 AERIAL PHOTO

臨時商店及服務行業 (為期3年)  
元朗牛潭尾丈量約份第105約  
地段第1766號餘段及第1767號餘段 (部分) 和毗連政府土地  
TEMPORARY SHOP AND SERVICES  
FOR A PERIOD OF 3 YEARS  
LOTS 1766 RP AND 1767 RP (PART) IN D.D. 105 AND  
ADJOINING GOVERNMENT LAND, NGAU TAM MEI, YUEN LONG

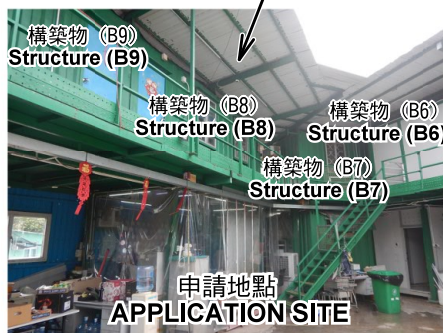
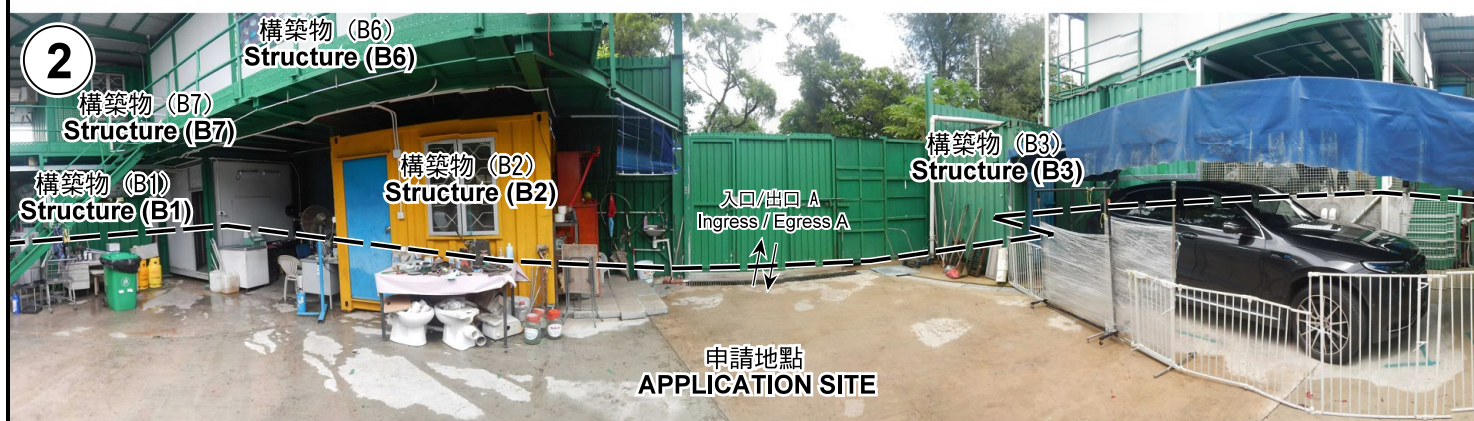
規劃署  
PLANNING  
DEPARTMENT



參考編號  
REFERENCE No.  
A/YL-NTM/425

圖 PLAN  
A-3





申請地點界線只作識別用 APPLICATION SITE BOUNDARY FOR IDENTIFICATION PURPOSE ONLY

## 實地照片 SITE PHOTOS

本圖於2021年9月8日擬備，所根據的資料為攝於2021年8月3日的實地照片  
PLAN PREPARED ON 8.9.2021  
BASED ON SITE PHOTOS  
TAKEN ON 3.8.2021

臨時商店及服務行業（為期3年）  
元朗牛潭尾丈量約份第105約  
地段第1766號餘段及第1767號餘段（部分）和毗連政府土地  
TEMPORARY SHOP AND SERVICES  
FOR A PERIOD OF 3 YEARS  
LOTS 1766 RP AND 1767 RP (PART) IN D.D. 105 AND  
ADJOINING GOVERNMENT LAND, NGAU TAM MEI, YUEN LONG

規劃署  
PLANNING  
DEPARTMENT



參考編號  
REFERENCE No.  
A/YL-NTM/425

圖 PLAN  
A-4a



4



5



申請地點界線只作識別用 APPLICATION SITE BOUNDARY FOR IDENTIFICATION PURPOSE ONLY

### 實地照片 SITE PHOTOS

本圖於2021年9月8日擬備，所根據的資料為攝於2021年8月3日的實地照片  
PLAN PREPARED ON 8.9.2021  
BASED ON SITE PHOTOS  
TAKEN ON 3.8.2021

臨時商店及服務行業（為期3年）  
元朗牛潭尾丈量約份第105約  
地段第1766號餘段及第1767號餘段（部分）和毗連政府土地  
TEMPORARY SHOP AND SERVICES  
FOR A PERIOD OF 3 YEARS  
LOTS 1766 RP AND 1767 RP (PART) IN D.D. 105 AND  
ADJOINING GOVERNMENT LAND, NGAU TAM MEI, YUEN LONG

規劃署  
PLANNING  
DEPARTMENT



參考編號  
REFERENCE No.  
A/YL-NTM/425

圖 PLAN  
A-4b