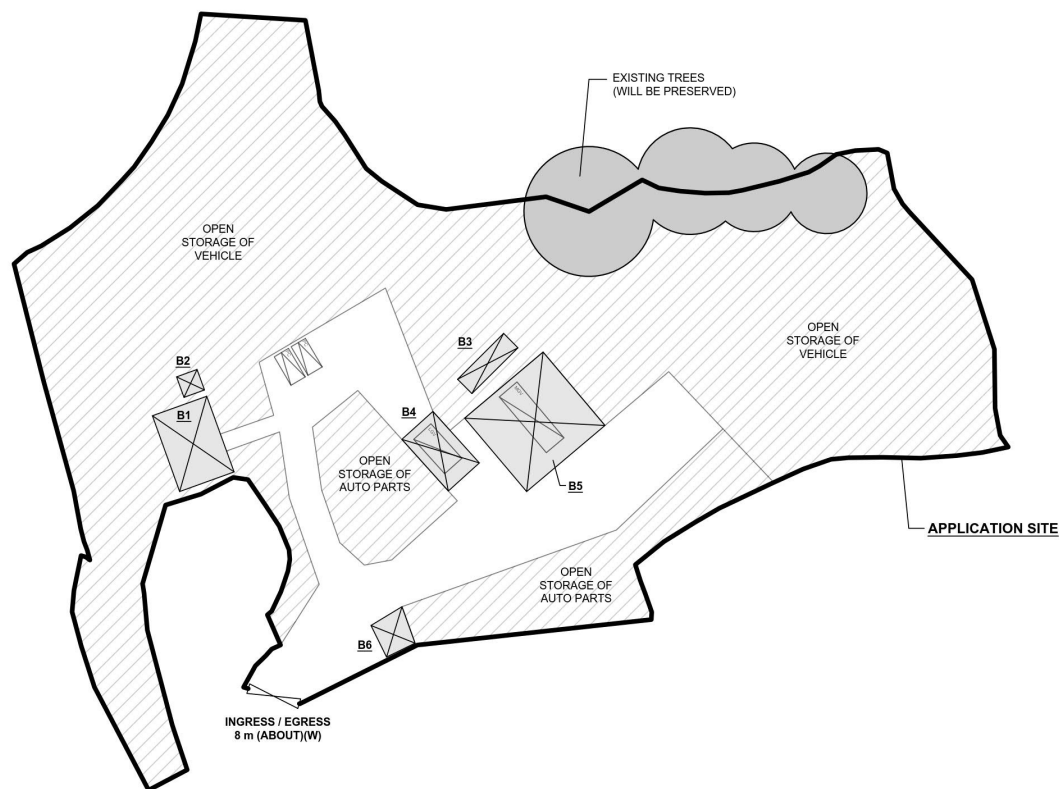
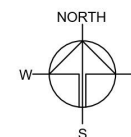


DEVELOPMENT PARAMETERS

APPLICATION SITE AREA	: 8,699 m ²	(ABOUT)
COVERED AREA	: 464 m ²	(ABOUT)
UNCOVERED AREA	: 8,235 m ²	(ABOUT)
PLOT RATIO	: 0.07	(ABOUT)
SITE COVERAGE	: 5 %	(ABOUT)
NO. OF STRUCTURE	: 6	
DOMESTIC GFA	: N/A	
NON-DOMESTIC GFA	: 570 m ²	(ABOUT)
TOTAL GFA	: 570 m ²	(ABOUT)
BUILDING HEIGHT	: 3 m - 8 m	(ABOUT)
NO. OF STOREY	: 1 - 2	

STRUCTURE	USE	COVERED AREA	GFA	BUILDING HEIGHT
B1	SITE OFFICE, STORAGE OF AUTO PARTS	106 m ² (ABOUT)	212 m ² (ABOUT)	7 m (ABOUT)(2-STOREY)
B2	WASHROOM	10 m ² (ABOUT)	10 m ² (ABOUT)	3 m (ABOUT)(1-STOREY)
B3	STORAGE OF AUTO PARTS	30 m ² (ABOUT)	30 m ² (ABOUT)	3 m (ABOUT)(1-STOREY)
B4	VEHICLE STRIPPING WORKSHOP, SHELTER FOR LOADING / UNLOADING	66 m ² (ABOUT)	66 m ² (ABOUT)	7 m (ABOUT)(1-STOREY)
B5	VEHICLE STRIPPING WORKSHOP, SHELTER FOR LOADING / UNLOADING	224 m ² (ABOUT)	224 m ² (ABOUT)	8 m (ABOUT)(1-STOREY)
B6	STORAGE OF AUTO PARTS	28 m ² (ABOUT)	28 m ² (ABOUT)	6 m (ABOUT)(1-STOREY)
TOTAL		464 m ² (ABOUT)	570 m ² (ABOUT)	



PARKING AND LOADING / UNLOADING PROVISIONS

NO. OF PRIVATE CAR PARKING SPACE	: 2
DIMENSION OF PARKING SPACE	: 5 m (L) x 2.5 m (W)
NO. OF L/UL SPACE FOR LIGHT GOODS VEHICLE	: 1
DIMENSION OF L/UL SPACE	: 7 m (L) x 3.5 m (W)
NO. OF L/UL SPACE FOR MEDIUM GOODS VEHICLE	: 1
DIMENSION OF L/UL SPACE	: 11 m (L) x 3.5 m (W)

LEGEND

	APPLICATION SITE
	STRUCTURE
	PARKING SPACE (PRIVATE CAR)
	L/UL SPACE (LIGHT GOODS VEHICLE)
	L/UL SPACE (MEDIUM GOODS VEHICLE)
	INGRESS / EGRESS

PLANNING CONSULTANT



PROJECT

PROPOSED VEHICLE STRIPPING WORKSHOP, OPEN STORAGE OF VEHICLES AND AUTO PARTS WITH ANCILLARY FACILITIES FOR A PERIOD OF 3 YEARS AND ASSOCIATED FILLING OF LAND

SITE LOCATION

VARIOUS LOTS IN D.D. 111, PAT HEUNG, YUEN LONG, NEW TERRITORIES

SCALE

1:1000 @ A4

DRAWN BY	DATE
MN	18.3.2024
CHECKED BY	DATE
APPROVED BY	DATE
DWG. TITLE	
LAYOUT PLAN	
DWG NO.	VER.
PLAN 5	001

(摘錄自申請人於 11. 4. 2024 呈交的申請書)
(Extract from Applicant's
Submission of 11.4.2024)

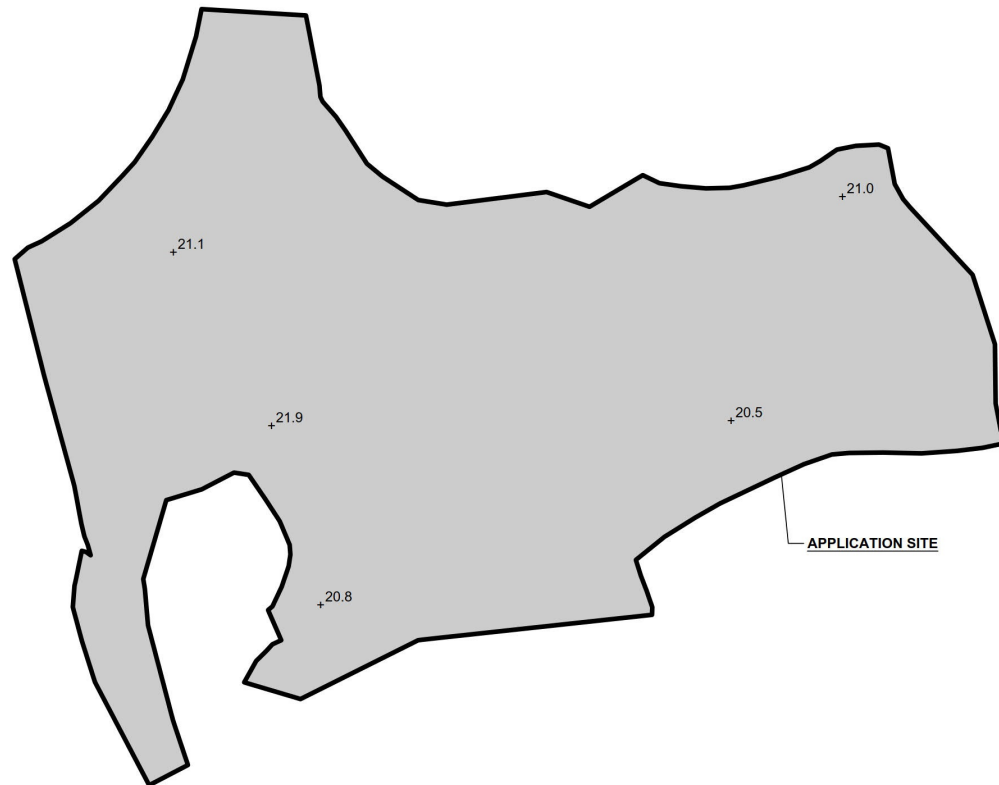
參考編號
REFERENCE No.
A/YL-PH/1006

繪圖
DRAWING
A - 1

EXISTING CONDITION OF THE APPLICATION SITE

APPLICATION SITE AREA	: 8,699 m ²	(ABOUT)
COVERED BY STRUCTURE	: 464 m ²	(ABOUT)
EXISTING FILLED AREA	: 8,699 m ²	(ABOUT)
DEPTH OF LAND FILLING	: NOT MORE THAN 0.2 m	
EXISTING SITE LEVELS	: +20.5 mPD TO +21.9 mPD	(ABOUT)
MATERIAL OF LAND FILLING	: CONCRETE	
USE	: PARKING AND LOADING / UNLOADING SPACE, OPEN STORAGE AND CIRCULATION AREA	

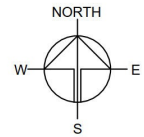
THE APPLICATION SITE HAS ALREADY BEEN HARD-PAVED. NO FURTHER FILLING OF LAND WILL BE CARRIED OUT AFTER PLANNING PERMISSION HAS BEEN GRANTED FROM THE TOWN PLANNING BOARD.



LEGEND

	APPLICATION SITE
	LAND FILLING AREA
+8.9	EXISTING SITE LEVEL

*SITE LEVELS ARE FOR ILLUSTRATION PURPOSE ONLY



PLANNING CONSULTANT



PROJECT

PROPOSED VEHICLE WORKSHOP, OPEN STORAGE OF VEHICLES AND AUTO PARTS WITH ANCILLARY FACILITIES FOR A PERIOD OF 3 YEARS AND ASSOCIATED FILLING OF LAND

SITE LOCATION

VARIOUS LOTS IN D.D. 111, PAT HEUNG, YUEN LONG, NEW TERRITORIES

SCALE

1:1000 @ A4

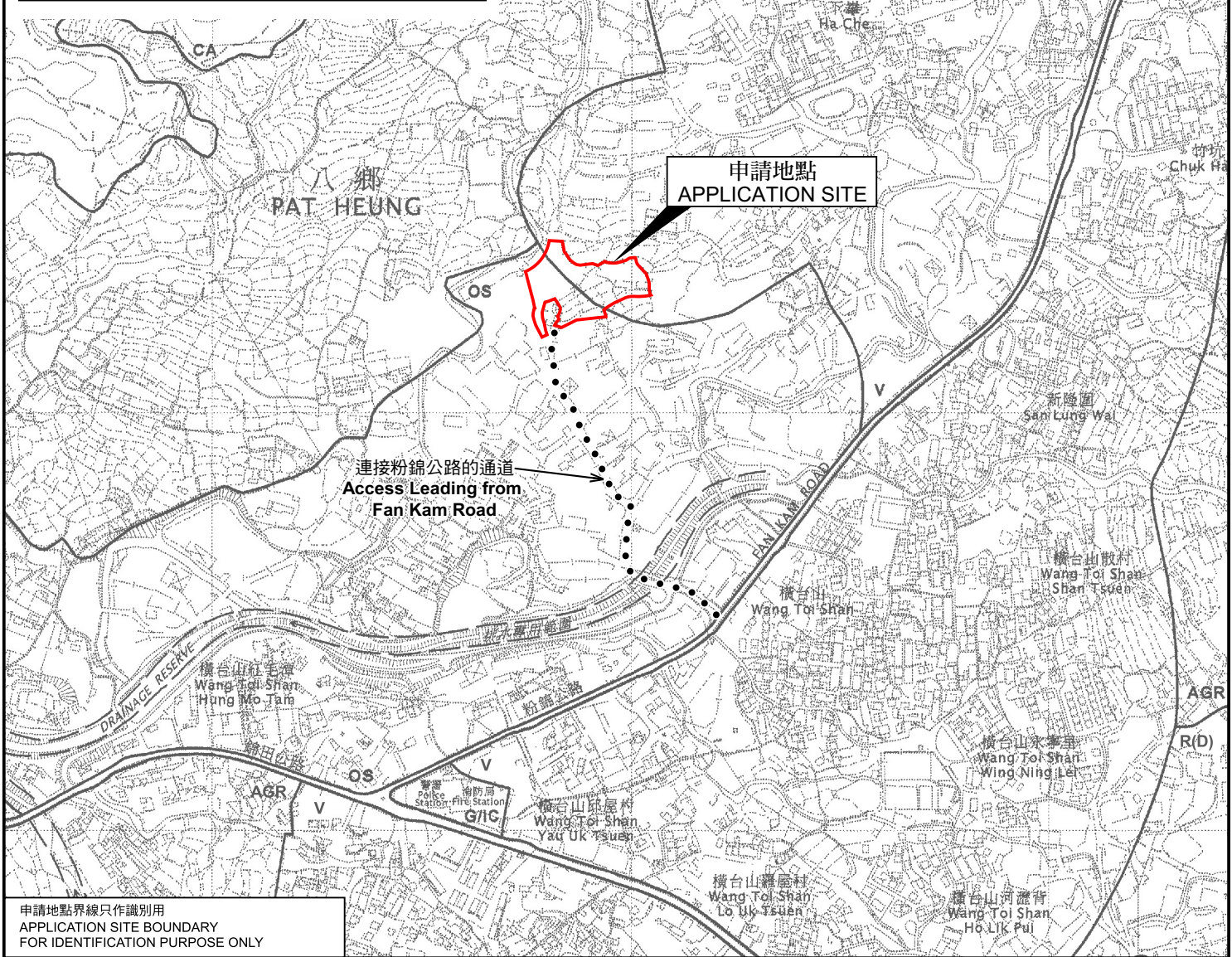
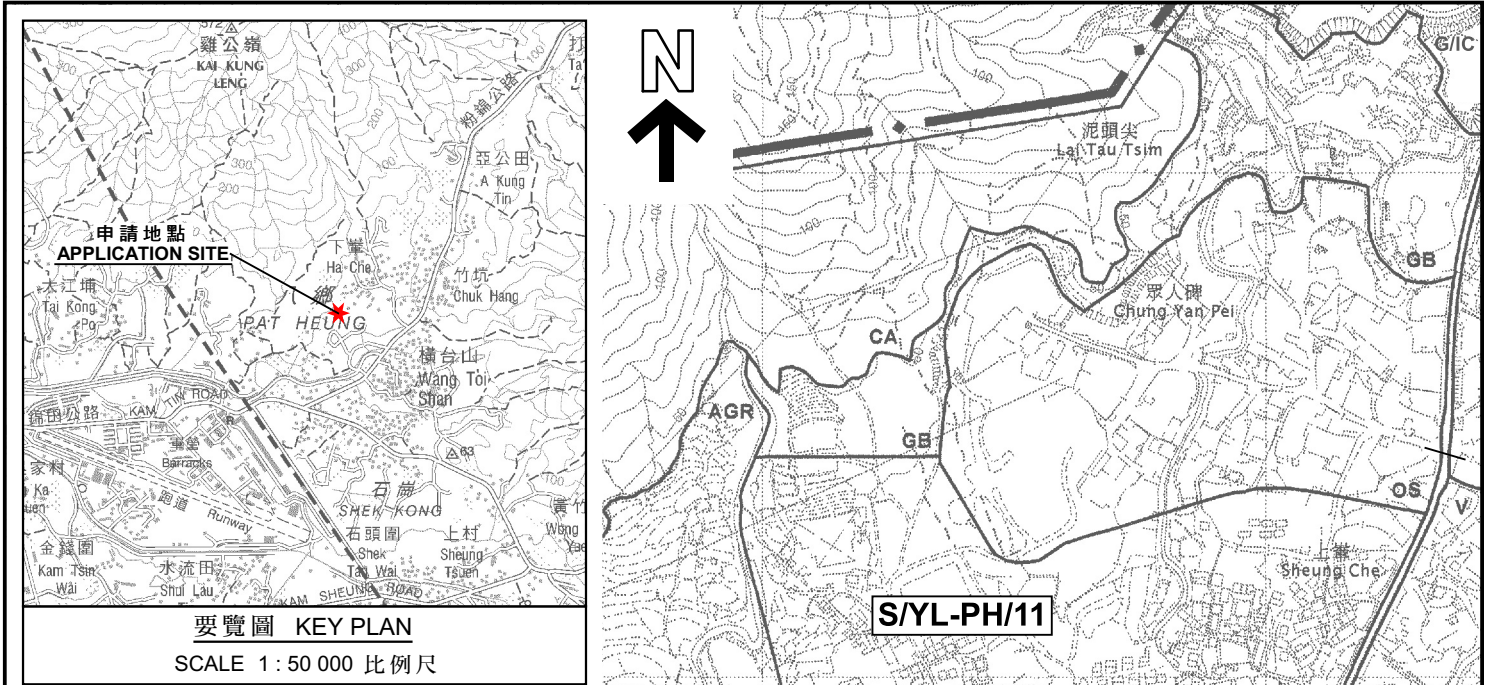
DRAWN BY	DATE
MN	18.3.2024
REVISED BY	DATE
APPROVED BY	DATE

DWG. TITLE	FILLING OF LAND AREA
DWG NO.	PLAN 6
VER.	001

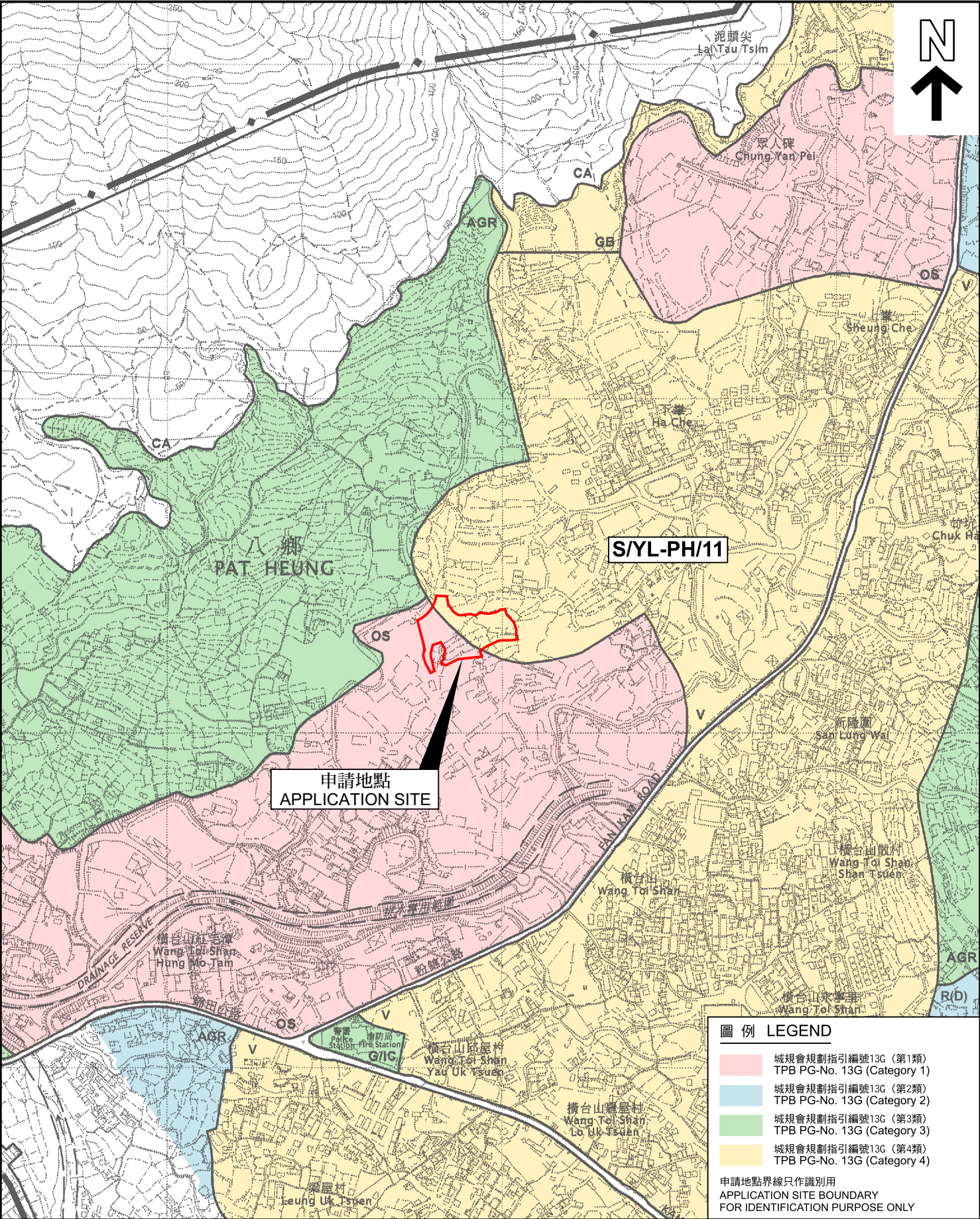
(摘錄自申請人於 11. 4. 2024 呈交的申請書)
(Extract from Applicant's
Submission of 11.4.2024)

參考編號
REFERENCE No.
A/YL-PH/1006

繪圖
DRAWING
A - 2



<p>申請地點界線只作識別用 APPLICATION SITE BOUNDARY FOR IDENTIFICATION PURPOSE ONLY</p> <p>本摘要圖於2024年5月23日擬備， 所根據的資料為於2006年10月17日 核准的分區計劃大綱圖編號 S/YL-PH/11 EXTRACT PLAN PREPARED ON 23.5.2024 BASED ON OUTLINE ZONING PLAN No. S/YL-PH/11 APPROVED ON 17.10.2006</p>	<p>位置圖 LOCATION PLAN</p> <p>臨時露天存放(車輛和車輛零件)及拆車場連附屬設施(為期3年)及填土工程 新界元朗八鄉丈量約份第111約地段第1050號(部分)、 第1054號餘段(部分)、第1055號(部分)、第1057號(部分)、 第1059號(部分)、第1161號(部分)及第1169號(部分) TEMPORARY OPEN STORAGE (VEHICLES AND VEHICLE PARTS) AND VEHICLE STRIPPING YARD WITH ANCILLARY FACILITIES FOR A PERIOD OF 3 YEARS AND FILLING OF LAND LOTS 1050 (PART), 1054 RP (PART), 1055 (PART), 1057 (PART), 1059 (PART), 1161 (PART) AND 1169 (PART) IN D.D. 111, PAT HEUNG, YUEN LONG, NEW TERRITORIES</p> <p>SCALE 1 : 7 500 比例尺</p> <p>米 100 0 100 200 300 米 METRES</p>	<p>規劃署 PLANNING DEPARTMENT</p> <p>參考編號 REFERENCE No. A/YL-PH/1006</p> <p>圖 PLAN A-1a</p>
--	--	---



圖例 LEGEND

城規會規劃指引編號13G (第1類)
TPB PG-No. 13G (Category 1)

城規會規劃指引編號13G (第2類)
TPB PG-No. 13G (Category 2)

城規會規劃指引編號13G (第3類)
TPB PG-No. 13G (Category 3)

城規會規劃指引編號13G (第4類)
TPB PG-No. 13G (Category 4)

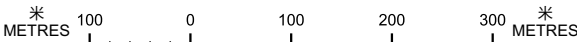
申請地點界線只作識別用
APPLICATION SITE BOUNDARY
FOR IDENTIFICATION PURPOSE ONLY

位置圖 LOCATION PLAN

臨時露天存放(車輛和車輛零件)及拆車場連附屬設施(為期3年)及填土工程
新界元朗八鄉丈量約份第111約地段第1050號(部分)、
第1054號餘段(部分)、第1055號(部分)、第1057號(部分)、
第1059號(部分)、第1161號(部分)及第1169號(部分)

TEMPORARY OPEN STORAGE (VEHICLES AND VEHICLE PARTS)
AND VEHICLE STRIPPING YARD WITH ANCILLARY FACILITIES
FOR A PERIOD OF 3 YEARS AND FILLING OF LAND
LOTS 1050 (PART), 1054 RP (PART), 1055 (PART), 1057 (PART), 1059 (PART),
1161 (PART) AND 1169 (PART) IN D.D. 111, PAT HEUNG, YUEN LONG, NEW TERRITORIES

SCALE 1 : 7 500 比例尺



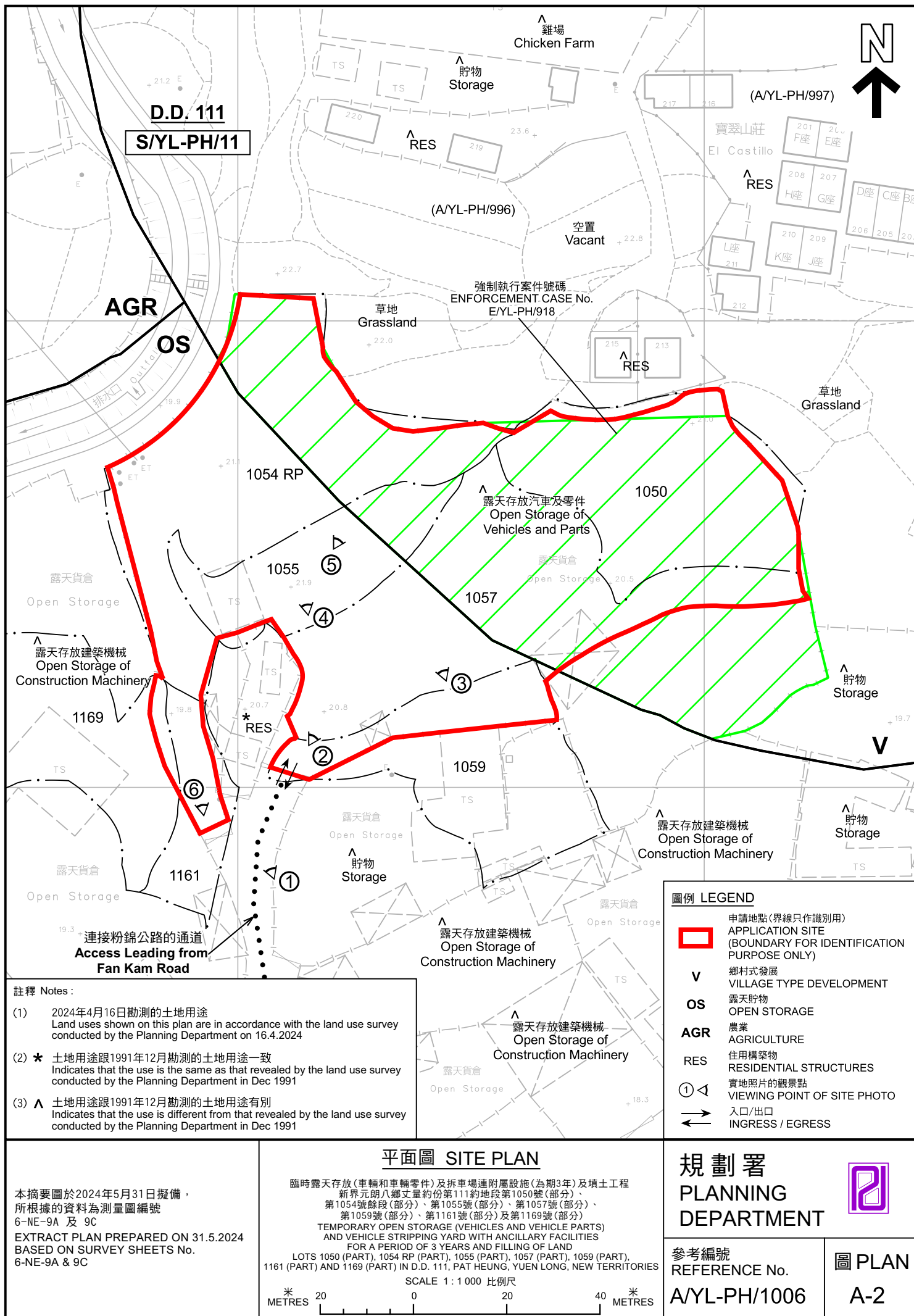
規劃署
PLANNING
DEPARTMENT

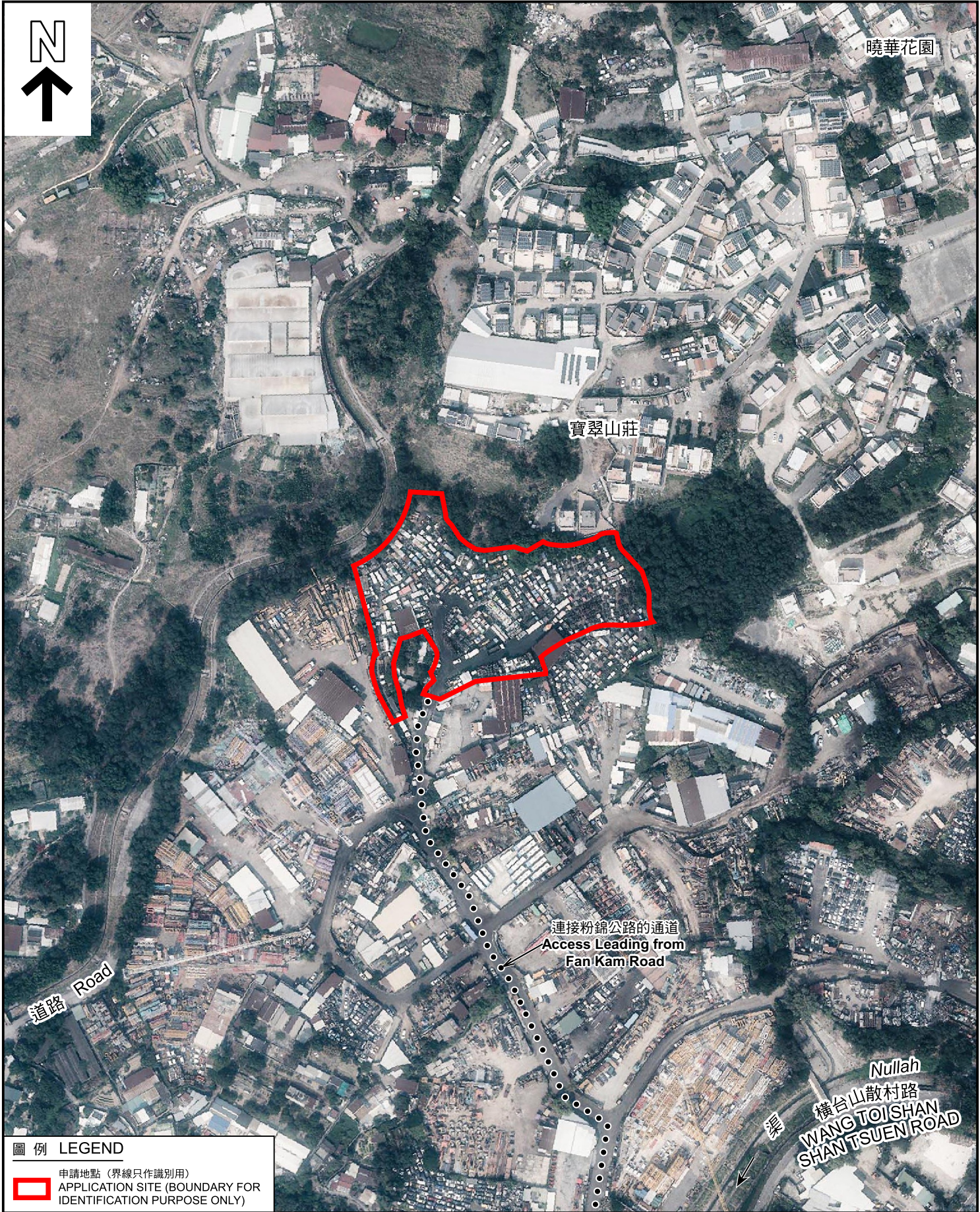


參考編號
REFERENCE No.
A/YL-PH/1006

圖 PLAN
A-1b

本摘要圖於2024年5月23日擬備，
所根據的資料為於2006年10月17日
核准的分區計劃大綱圖編號 S/YL-PH/11
EXTRACT PLAN PREPARED ON 23.5.2024
BASED ON OUTLINE ZONING PLAN No.
S/YL-PH/11 APPROVED ON 17.10.2006





圖例 LEGEND

申請地點 (界線只作識別用)
APPLICATION SITE (BOUNDARY FOR IDENTIFICATION PURPOSE ONLY)

本摘要圖於2024年5月24日擬備，
所根據的資料為地政總署於2023年2月24日
拍得的航攝照片編號E187745C 及 E187746C
EXTRACT PLAN PREPARED ON 24.5.2024
BASED ON AERIAL PHOTOS No.
E187745C & E187746C TAKEN ON
24.2.2023 BY LANDS DEPARTMENT

航攝照片 AERIAL PHOTO

臨時露天存放(車輛和車輛零件)及拆車場連附屬設施(為期3年)及填土工程
新界元朗八鄉丈量約份第111約地段第1050號(部分)、
第1054號餘段(部分)、第1055號(部分)、第1057號(部分)、
第1059號(部分)、第1161號(部分)及第1169號(部分)
TEMPORARY OPEN STORAGE (VEHICLES AND VEHICLE PARTS)
AND VEHICLE STRIPPING YARD WITH ANCILLARY FACILITIES
FOR A PERIOD OF 3 YEARS AND FILLING OF LAND
LOTS 1050 (PART), 1054 RP (PART), 1055 (PART), 1057 (PART), 1059 (PART),
1161 (PART) AND 1169 (PART) IN D.D. 111, PAT HEUNG, YUEN LONG, NEW TERRITORIES

規劃署
PLANNING
DEPARTMENT

參考編號
REFERENCE No.
A/YL-PH/1006

圖 PLAN
A-3



申請地點界線只作識別用 APPLICATION SITE BOUNDARY FOR IDENTIFICATION PURPOSE ONLY

實地照片 SITE PHOTOS

本圖於2024年5月23日擬備，所根據的資料為攝於2024年4月16日的實地照片
PLAN PREPARED ON 23.5.2024
BASED ON SITE PHOTOS
TAKEN ON 16.4.2024

臨時露天存放(車輛和車輛零件)及拆車場連附屬設施(為期3年)及填土工程
新界元朗八鄉丈量約份第111約地段第1050號(部分)、
第1054號餘段(部分)、第1055號(部分)、第1057號(部分)、
第1059號(部分)、第1161號(部分)及第1169號(部分)
TEMPORARY OPEN STORAGE (VEHICLES AND VEHICLE PARTS)
AND VEHICLE STRIPPING YARD WITH ANCILLARY FACILITIES
FOR A PERIOD OF 3 YEARS AND FILLING OF LAND
LOTS 1050 (PART), 1054 RP (PART), 1055 (PART), 1057 (PART), 1059 (PART),
1161 (PART) AND 1169 (PART) IN D.D. 111, PAT HEUNG, YUEN LONG, NEW TERRITORIES

規劃署
PLANNING
DEPARTMENT



參考編號
REFERENCE No.
A/YL-PH/1006

圖 PLAN
A-4a



申請地點
APPLICATION SITE



申請地點
APPLICATION SITE



申請地點
APPLICATION SITE

申請地點界線只作識別用 APPLICATION SITE BOUNDARY FOR IDENTIFICATION PURPOSE ONLY

實地照片 SITE PHOTOS

本圖於2024年5月23日擬備，所根據的資料為攝於2024年4月16日的實地照片
PLAN PREPARED ON 23.5.2024
BASED ON SITE PHOTOS
TAKEN ON 16.4.2024

臨時露天存放(車輛和車輛零件)及拆車場連附屬設施(為期3年)及填土工程
新界元朗八鄉丈量約份第111約地段第1050號(部分)、
第1054號餘段(部分)、第1055號(部分)、第1057號(部分)、
第1059號(部分)、第1161號(部分)及第1169號(部分)
TEMPORARY OPEN STORAGE (VEHICLES AND VEHICLE PARTS)
AND VEHICLE STRIPPING YARD WITH ANCILLARY FACILITIES
FOR A PERIOD OF 3 YEARS AND FILLING OF LAND
LOTS 1050 (PART), 1054 RP (PART), 1055 (PART), 1057 (PART), 1059 (PART),
1161 (PART) AND 1169 (PART) IN D.D. 111, PAT HEUNG, YUEN LONG, NEW TERRITORIES

規劃署
PLANNING
DEPARTMENT



參考編號
REFERENCE No.
A/YL-PH/1006

圖 PLAN
A-4b