

## DEVELOPMENT PARAMETERS

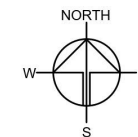
APPLICATION SITE AREA	: 2,650 m <sup>2</sup>	(ABOUT)
COVERED AREA	: 183 m <sup>2</sup>	(ABOUT)
UNCOVERED AREA	: 2,467 m <sup>2</sup>	(ABOUT)

PLOT RATIO	: 0.07	(ABOUT)
SITE COVERAGE	: 7%	(ABOUT)

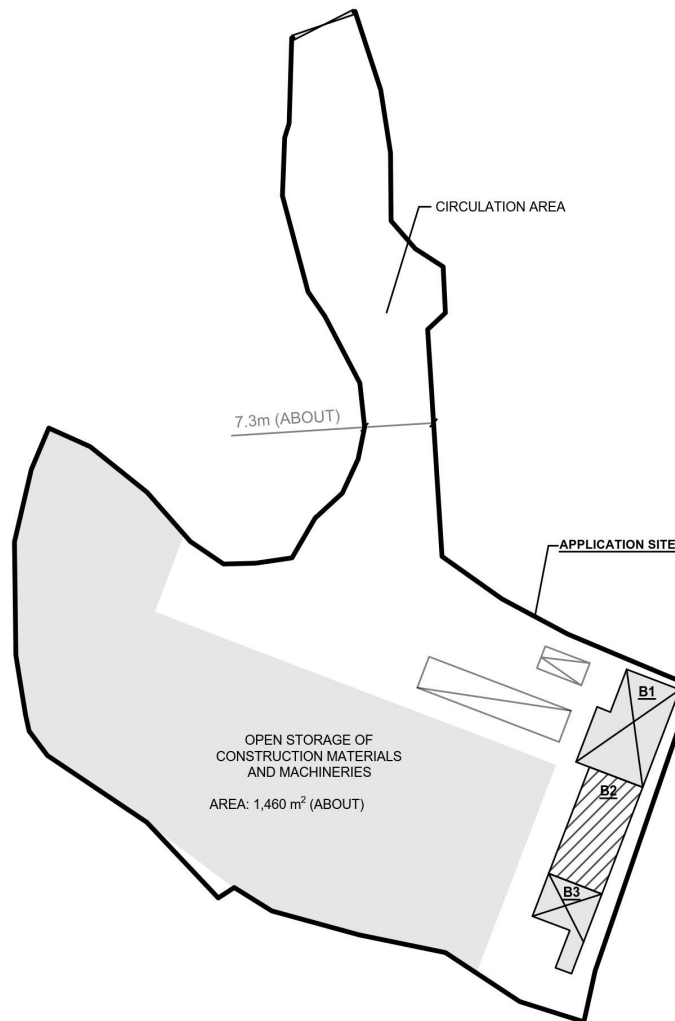
NO. OF STRUCTURE	: 3	
DOMESTIC GFA	: N/A	
NON-DOMESTIC GFA	: 183 m <sup>2</sup>	(ABOUT)
TOTAL GFA	: 183 m <sup>2</sup>	(ABOUT)

BUILDING HEIGHT	: 2.8 m - 4.8 m	(ABOUT)
NO. OF STOREY	: 1	

STRUCTURE	USE	COVERED AREA	GROSS FLOOR AREA	BUILDING HEIGHT
B1	SITE OFFICE AND WASHROOM	75 m <sup>2</sup> (ABOUT)	75 m <sup>2</sup> (ABOUT)	2.8 m (ABOUT)(1-STOREY)
B2	STORAGE OF CONSTRUCTION MATERIALS	72 m <sup>2</sup> (ABOUT)	72 m <sup>2</sup> (ABOUT)	4.8 m (ABOUT)(1-STOREY)
B3	STORAGE OF TOOLS	36 m <sup>2</sup> (ABOUT)	36 m <sup>2</sup> (ABOUT)	2.8 m (ABOUT)(1-STOREY)
TOTAL		183 m <sup>2</sup> (ABOUT)	183 m <sup>2</sup> (ABOUT)	



INGRESS / EGRESS  
7.3 m (ABOUT)(W)



CIRCULATION AREA

APPLICATION SITE

OPEN STORAGE OF  
CONSTRUCTION MATERIALS  
AND MACHINERIES  
AREA: 1,460 m<sup>2</sup> (ABOUT)

## LEGEND

	APPLICATION SITE
	STRUCTURE (ENCLOSED)
	STRUCTURE (SHED)
	PARKING SPACE
	LOADING / UNLOADING SPACE
	INGRESS / EGRESS

## PARKING AND LOADING / UNLOADING PROVISIONS

NO. OF PRIVATE CAR PARKING SPACE	: 1
DIMENSION OF PARKING SPACE	: 5 m (L) x 2.5 m (W)

NO. OF L/U SPACE FOR CONTAIN VEHICLE	: 1
DIMENSION OF L/U SPACE	: 16 m (L) x 3.5 m (W)

## PLANNING CONSULTANT



## PROJECT

PROPOSED TEMPORARY OPEN  
STORAGE OF CONSTRUCTION  
MATERIALS AND MACHINERIES  
WITH ANCILLARY FACILITIES  
FOR A PERIOD OF 3 YEARS AND  
ASSOCIATED FILLING OF LAND

## SITE LOCATION

LOT 55 (PART) IN D.D. 108, PAT  
HEUNG, YUEN LONG, NEW  
TERRITORIES

## SCALE

1:700 @ A4

DRAWN BY	DATE
MN	30.9.2024
REVISED BY	DATE
APPROVED BY	DATE

DWG. TITLE  
LAYOUT PLAN

DWG NO.	VER.
PLAN 1	002

(摘錄自申請人於 2. 10. 2024 呈交的進一步資料)  
(Extract from Applicant's Further  
Information Submitted on 2.10.2024)

參考編號  
REFERENCE No.  
AYL-PH/1015

繪圖  
DRAWING  
A - 1

# FILLING OF LAND AREA OF THE APPLICATION SITE

APPLICATION SITE AREA	: 2,650 m <sup>2</sup>	(ABOUT)
PROPOSED FILLING OF LAND AREA	: 2,641 m <sup>2</sup>	(ABOUT)
DEPTH OF LAND FILLING	: NOT MORE THAN 0.2 m	
EXISTING SITE LEVELS	: +34.4 mPD TO +35 mPD	(ABOUT)
MATERIAL OF LAND FILLING	: CONCRETE	
PURPOSE OF LAND FILLING	: SITE FORMATION OF STRUCTURE AND CIRCULATION SPACE	

THE SITE HAS ALREADY BEEN FILLED WITH CONCRETE. NO FURTHER FILLING OF LAND WILL BE CARRIED OUT DURING THE PLANNING APPROVAL PERIOD

STRUCTURE	USE	COVERED AREA	GROSS FLOOR AREA	BUILDING HEIGHT
B1	SITE OFFICE AND WASHROOM	75 m <sup>2</sup> (ABOUT)	75 m <sup>2</sup> (ABOUT)	2.8 m (ABOUT)(1-STOREY)
B2	STORAGE OF CONSTRUCTION MATERIALS	72 m <sup>2</sup> (ABOUT)	72 m <sup>2</sup> (ABOUT)	4.8 m (ABOUT)(1-STOREY)
B3	STORAGE OF TOOLS	36 m <sup>2</sup> (ABOUT)	36 m <sup>2</sup> (ABOUT)	2.8 m (ABOUT)(1-STOREY)
TOTAL		183 m <sup>2</sup> (ABOUT)	183 m <sup>2</sup> (ABOUT)	



INGRESS / EGRESS  
7.3 m (ABOUT)(W)

SOILED GROUND

- NO FILLING OF LAND WILL BE CARRIED AFTER PLANNING APPROVAL HAS BEEN OBTAINED FROM THE TOWN PLANNING BOARD



## PARKING AND LOADING / UNLOADING PROVISIONS

NO. OF PRIVATE CAR PARKING SPACE	: 1
DIMENSION OF PARKING SPACE	: 5 m (L) x 2.5 m (W)
NO. OF L/U SPACE FOR CONTAIN VEHICLE	: 1
DIMENSION OF L/U SPACE	: 16 m (L) x 3.5 m (W)

## LEGEND

<span style="border: 1px solid red; display: inline-block; width: 10px; height: 10px;"></span>	APPLICATION SITE
<span style="background-color: #cccccc; display: inline-block; width: 10px; height: 10px;"></span>	PROPOSED FILLING OF LAND
<b>+10.2</b>	PROPOSED SITE LEVEL

## PLANNING CONSULTANT



## PROJECT

TEMPORARY OPEN STORAGE OF CONSTRUCTION MATERIALS AND MACHINERIES WITH ANCILLARY FACILITIES FOR A PERIOD OF 3 YEARS

## SITE LOCATION

LOT 55 (PART) IN D.D. 108, PAT HEUNG, YUEN LONG, NEW TERRITORIES

## SCALE

1:700 @ A4

DRAWN BY	DATE
MN	15.9.2023
REVISED BY	DATE
LT	9.7.2024
APPROVED BY	DATE

DWG. TITLE  
PAVED RATIO

DWG NO.	VER.
PLAN 2	001

(摘錄自申請人於 2. 10. 2024 呈交的進一步資料)  
(Extract from Applicant's Further Information Submitted on 2.10.2024)

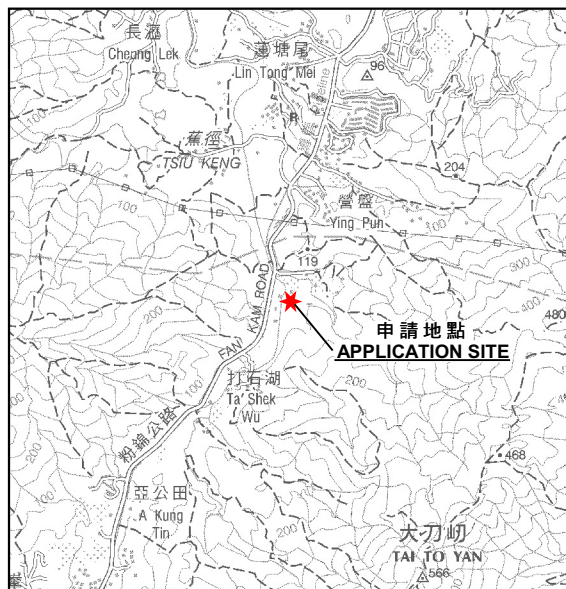
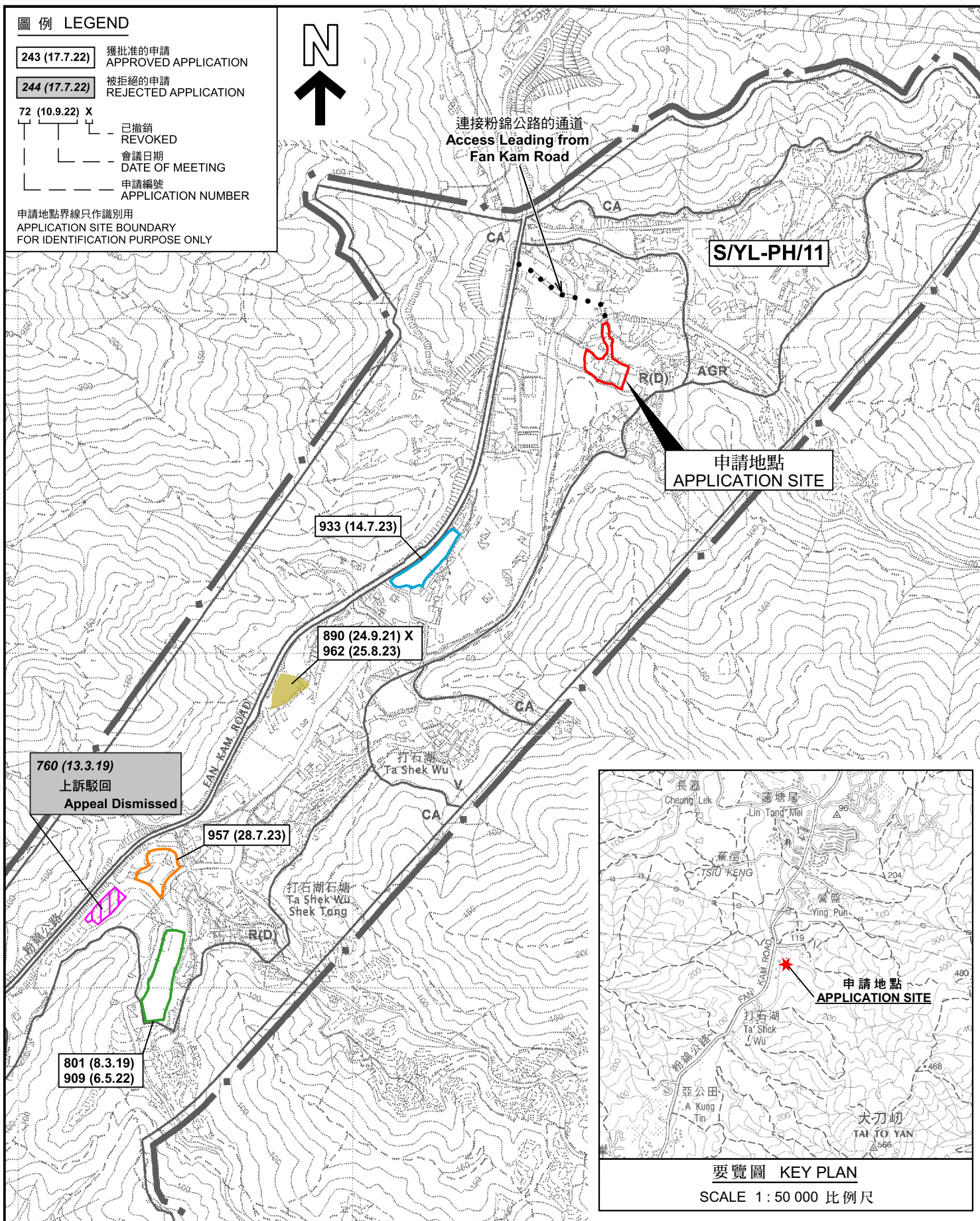
參考編號  
REFERENCE No.  
A/YL-PH/1015

繪圖  
DRAWING  
A - 2

# 圖例 LEGEND

- 243 (17.7.22) 獲批准的申請  
APPROVED APPLICATION
- 244 (17.7.22) 被拒絕的申請  
REJECTED APPLICATION
- 72 (10.9.22) X  
已撤銷  
REVOKED
- 會議日期  
DATE OF MEETING
- 申請編號  
APPLICATION NUMBER

申請地點界線只作識別用  
APPLICATION SITE BOUNDARY  
FOR IDENTIFICATION PURPOSE ONLY



要覽圖 KEY PLAN

SCALE 1: 50 000 比例尺

## 位置圖 LOCATION PLAN

臨時露天存放建築物料和機械連附屬設施(為期3年)及相關填土工程  
新界元朗八鄉丈量約份第108約地段第55號(部分)  
TEMPORARY OPEN STORAGE OF CONSTRUCTION MATERIALS AND  
MACHINERIES WITH ANCILLARY FACILITIES FOR  
A PERIOD OF 3 YEARS AND ASSOCIATED FILLING OF LAND  
LOT 55 (PART) IN D.D. 108,  
PAT HEUNG, YUEN LONG, NEW TERRITORIES

SCALE 1: 7 500 比例尺  
米 100 0 100 200 300 米  
METRES

規劃署  
PLANNING  
DEPARTMENT

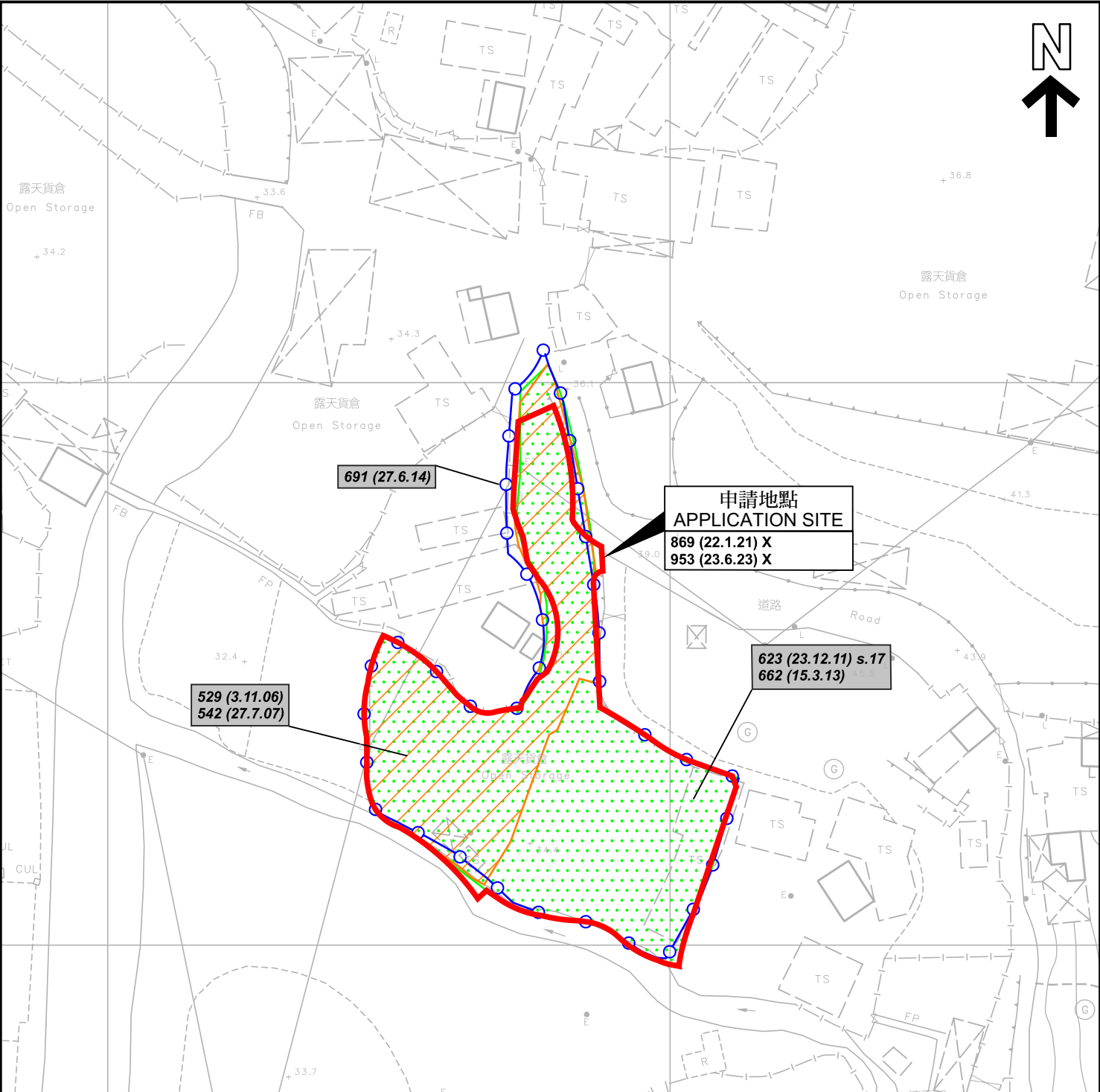


參考編號  
REFERENCE No.  
A/YL-PH/1015

圖 PLAN  
A-1a

本摘要圖於2024年11月13日擬備，  
所根據的資料為於2006年10月17日  
核准的分區計劃大綱圖編號 S/YL-PH/11  
EXTRACT PLAN PREPARED ON 13.11.2024  
BASED ON OUTLINE ZONING PLAN No.  
S/YL-PH/11 APPROVED ON 17.10.2006





圖例 LEGEND

- 243 (17.7.04)** 獲批准的申請  
APPROVED APPLICATION
- 244 (17.7.04)** 被拒絕的申請  
REJECTED APPLICATION
- 72 (10.9.99) X** 已撤銷  
REVOKED
- 會議日期  
DATE OF MEETING
- 申請編號  
APPLICATION NUMBER

申請地點界線只作識別用  
APPLICATION SITE BOUNDARY  
FOR IDENTIFICATION PURPOSE ONLY

本摘要圖於2024年11月13日擬備，  
所根據的資料為測量圖編號  
2-SE-25D  
EXTRACT PLAN PREPARED ON 13.11.2024  
BASED ON SURVEY SHEET No.  
2-SE-25D

先前申請圖 PREVIOUS APPLICATION PLAN

臨時露天存放建築物料和機械連附屬設施(為期3年)及相關填土工程  
新界元朗八鄉丈量約份第108約地段第55號(部分)  
TEMPORARY OPEN STORAGE OF CONSTRUCTION MATERIALS AND  
MACHINERIES WITH ANCILLARY FACILITIES FOR  
A PERIOD OF 3 YEARS AND ASSOCIATED FILLING OF LAND  
LOT 55 (PART) IN D.D. 108,  
PAT HEUNG, YUEN LONG, NEW TERRITORIES

SCALE 1 : 1 000 比例尺  
米 20 0 20 40 米  
METRES

規劃署  
PLANNING  
DEPARTMENT

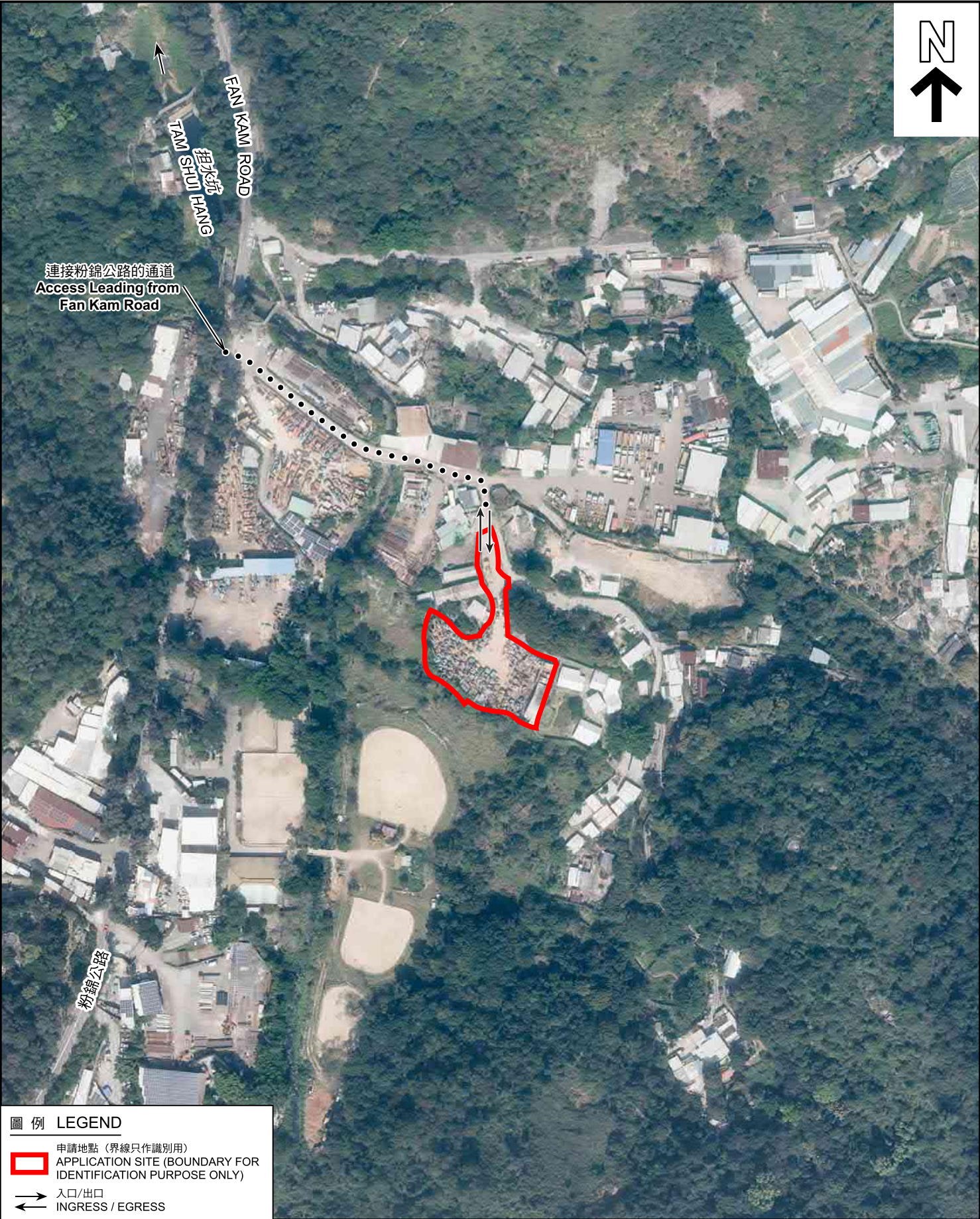


參考編號  
REFERENCE No.  
A/YL-PH/1015

圖 PLAN  
A-1b







**圖例 LEGEND**


 申請地點 (界線只作識別用)  
APPLICATION SITE (BOUNDARY FOR IDENTIFICATION PURPOSE ONLY)

 入口/出口  
INGRESS / EGRESS

本摘要圖於2024年11月13日擬備，  
所根據的資料為地政總署於2023年2月23日  
拍得的航攝照片編號 E186490C  
EXTRACT PLAN PREPARED ON 13.11.2024  
BASED ON AERIAL PHOTO No.  
E186490C TAKEN ON 23.2.2023  
BY LANDS DEPARTMENT

**航攝照片 AERIAL PHOTO**

臨時露天存放建築物料和機械連附屬設施(為期3年)及相關填土工程  
新界元朗八鄉丈量約份第108約地段第55號(部分)  
TEMPORARY OPEN STORAGE OF CONSTRUCTION MATERIALS AND  
MACHINERIES WITH ANCILLARY FACILITIES FOR  
A PERIOD OF 3 YEARS AND ASSOCIATED FILLING OF LAND  
LOT 55 (PART) IN D.D. 108,  
PAT HEUNG, YUEN LONG, NEW TERRITORIES

<b>規劃署 PLANNING DEPARTMENT</b>		
參考編號 REFERENCE No.	圖 PLAN	
A/YL-PH/1015	A-3	





申請地點界線只作識別用 APPLICATION SITE BOUNDARY FOR IDENTIFICATION PURPOSE ONLY

### 實地照片 SITE PHOTOS

本圖於2024年11月13日擬備，所根據的資料為攝於2024年6月18日的實地照片  
PLAN PREPARED ON 13.11.2024  
BASED ON SITE PHOTOS  
TAKEN ON 18.6.2024

臨時露天存放建築物料和機械連附屬設施(為期3年)及相關填土工程  
新界元朗八鄉丈量約份第108約地段第55號(部分)  
TEMPORARY OPEN STORAGE OF CONSTRUCTION MATERIALS AND  
MACHINERIES WITH ANCILLARY FACILITIES FOR  
A PERIOD OF 3 YEARS AND ASSOCIATED FILLING OF LAND  
LOT 55 (PART) IN D.D. 108,  
PAT HEUNG, YUEN LONG, NEW TERRITORIES

規劃署  
PLANNING  
DEPARTMENT



參考編號  
REFERENCE No.  
A/YL-PH/1015

圖 PLAN  
A-4a



4



申請地點  
APPLICATION SITE

5



申請地點  
APPLICATION SITE

申請地點界線只作識別用 APPLICATION SITE BOUNDARY FOR IDENTIFICATION PURPOSE ONLY

### 實地照片 SITE PHOTOS

本圖於2024年11月13日擬備，所根據的資料為攝於2024年6月18日的實地照片  
PLAN PREPARED ON 13.11.2024  
BASED ON SITE PHOTOS  
TAKEN ON 18.6.2024

臨時露天存放建築物料和機械連附屬設施(為期3年)及相關填土工程  
新界元朗八鄉丈量約份第108約地段第55號(部分)  
TEMPORARY OPEN STORAGE OF CONSTRUCTION MATERIALS AND  
MACHINERIES WITH ANCILLARY FACILITIES FOR  
A PERIOD OF 3 YEARS AND ASSOCIATED FILLING OF LAND  
LOT 55 (PART) IN D.D. 108,  
PAT HEUNG, YUEN LONG, NEW TERRITORIES

規劃署  
PLANNING  
DEPARTMENT



參考編號  
REFERENCE No.  
A/YL-PH/1015

圖 PLAN  
A-4b