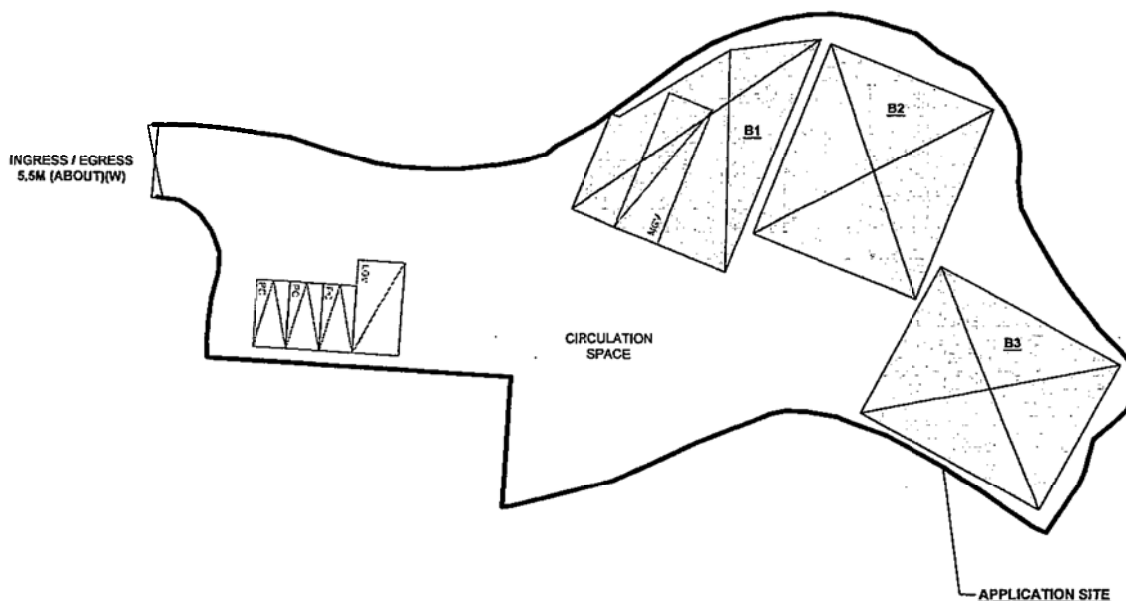
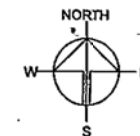


DEVELOPMENT PARAMETERS

APPLICATION SITE AREA	: 1,640m ²	(ABOUT)
COVERED AREA	: 579m ²	(ABOUT)
UNCOVERED AREA	: 1,061m ²	(ABOUT)
PLOT RATIO	: 0.4	(ABOUT)
SITE COVERAGE	: 35 %	(ABOUT)
NO. OF STRUCTURE	: 3	
DOMESTIC GFA	: NOT APPLICABLE	
NON-DOMESTIC GFA	: 579m ²	(ABOUT)
TOTAL GFA	: 579m ²	(ABOUT)
BUILDING HEIGHT	: 8.23m	(ABOUT)
NO. OF STOREY	: 1	

STRUCTURE	USE	COVERED AREA	GFA	BUILDING HEIGHT
B1	STORAGE OF CONSTRUCTION MATERIAL AND LOADING/UNLOADING SPACE	179m ² (ABOUT)	179m ² (ABOUT)	8.23m (ABOUT)(1-STOREY)
B2	STORAGE OF CONSTRUCTION MATERIAL	206m ² (ABOUT)	206m ² (ABOUT)	8.23m (ABOUT)(1-STOREY)
B3	STORAGE OF CONSTRUCTION MATERIAL ANCILLARY OFFICE	194m ² (ABOUT)	194m ² (ABOUT)	8.23m (ABOUT)(1-STOREY)
TOTAL		579m ² (ABOUT)	579m ² (ABOUT)	



PARKING AND LOADING/UNLOADING PROVISIONS

NO. OF PRIVATE CAR PARKING SPACE	: 3
DIMENSION OF PARKING SPACE	: 5m (L) X 2.5m (W)
NO. OF L/U/L SPACE FOR LIGHT GOODS VEHICLE	: 1
DIMENSION OF L/U/L SPACE	: 7m (L) X 3.5m (W)
NO. OF L/U/L SPACE FOR MEDIUM GOODS VEHICLE	: 1
DIMENSION OF L/U/L SPACE	: 11m (L) X 3.5m (W)

LEGEND

	APPLICATION SITE
	STRUCTURE
	PARKING SPACE
	LOADING / UNLOADING SPACE
	INGRESS / EGRESS

PLANNING CONSULTANT

R-RICHES PROPERTY CONSULTANTS LIMITED

PROJECT

PROPOSED TEMPORARY STORAGE OF CONSTRUCTION MATERIALS WITH ANCILLARY OFFICE FOR A PERIOD OF 3 YEARS AND LAND FILLING

SITE LOCATION

LOTS 22 (PART) AND 24 (PART) IN D.D. 111, PAT HEUNG, YUEN LONG, NEW TERRITORIES

SCALE

1:500

DATE

7.1.2022

CHECKED BY

DATE

APPROVED BY

DATE

DWG. TITLE

LAYOUT PLAN

DWG. NO.

P05

VER.

001

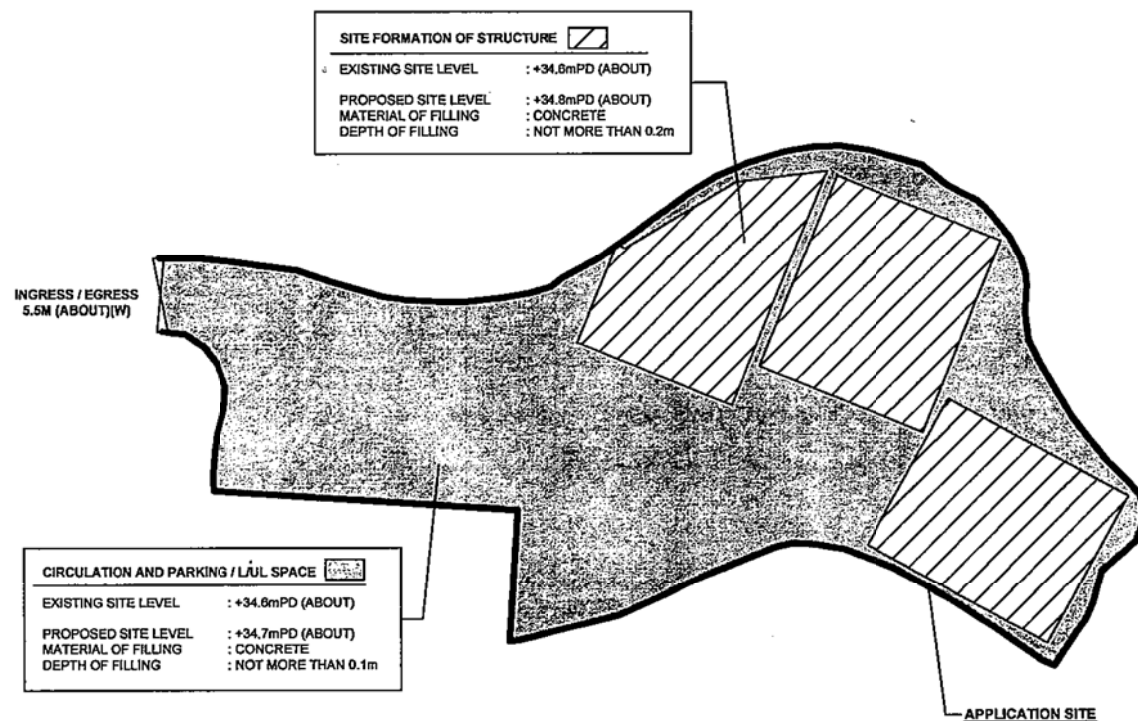
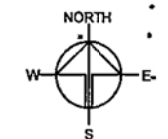
(摘錄自申請人於 16. 2. 2022 呈交的申請書)
(Extract from Applicant's
Submission of 16.2.2022)

參考編號
REFERENCE No.
A/YL-PH/908

繪圖 DRAWING
A-1

PAVED RATIO OF THE APPLICATION SITE

APPLICATION SITE AREA	: 1,640m ²	(ABOUT)
COVERED BY STRUCTURE	: 579m ²	(ABOUT)
LAND FILLING AREA	: 1,640m ² (100%)	(ABOUT)
DEPTH OF LAND FILLING	: NOT MORE THAN 0.2m	(ABOUT)
MATERIAL OF LAND FILLING	: CONCRETE	
PURPOSE OF LAND FILLING	: SITE FORMATION OF STRUCTURES AND CIRCULATION SPACE	



LEGEND	
	APPLICATION SITE
	STRUCTURE
	LAND FILLING (FOR STRUCTURE)
	LAND FILLING (FOR CIRCULATION)
	INGRESS / EGRESS

PLANNING CONSULTANT
R-RICHES PROPERTY CONSULTANTS LIMITED

PROJECT
PROPOSED TEMPORARY STORAGE OF CONSTRUCTION MATERIALS WITH ANCILLARY OFFICE FOR A PERIOD OF 3 YEARS AND LAND FILLING

SITE LOCATION
LOTS 22 (PART) AND 24 (PART) IN D.D. 111, PAT HEUNG, YUEN LONG, NEW TERRITORIES

SCALE
1:500

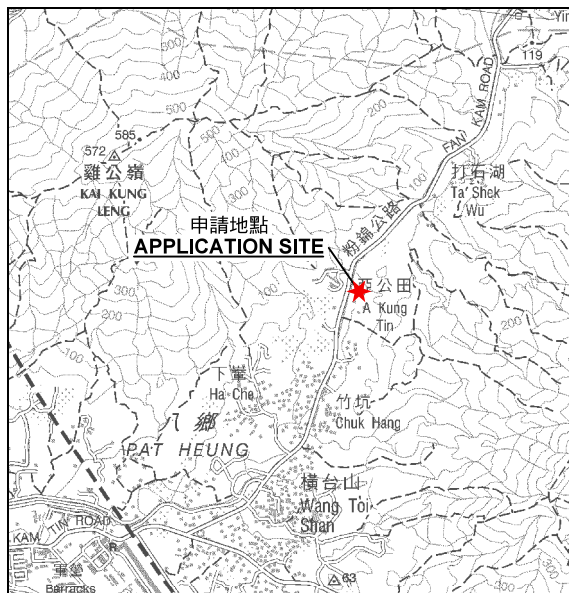
DATE	10.1.2022
MIN	
CHECKED BY	
DATE	
APPROVED BY	
DATE	
DWG. TITLE	LAND FILLING AREA
DWG. NO.	P06
VER.	001

(摘錄自申請人於 16. 2. 2022 呈交的申請書)
(Extract from Applicant's Submission of 16.2.2022)

參考編號
REFERENCE No.
A/YL-PH/908

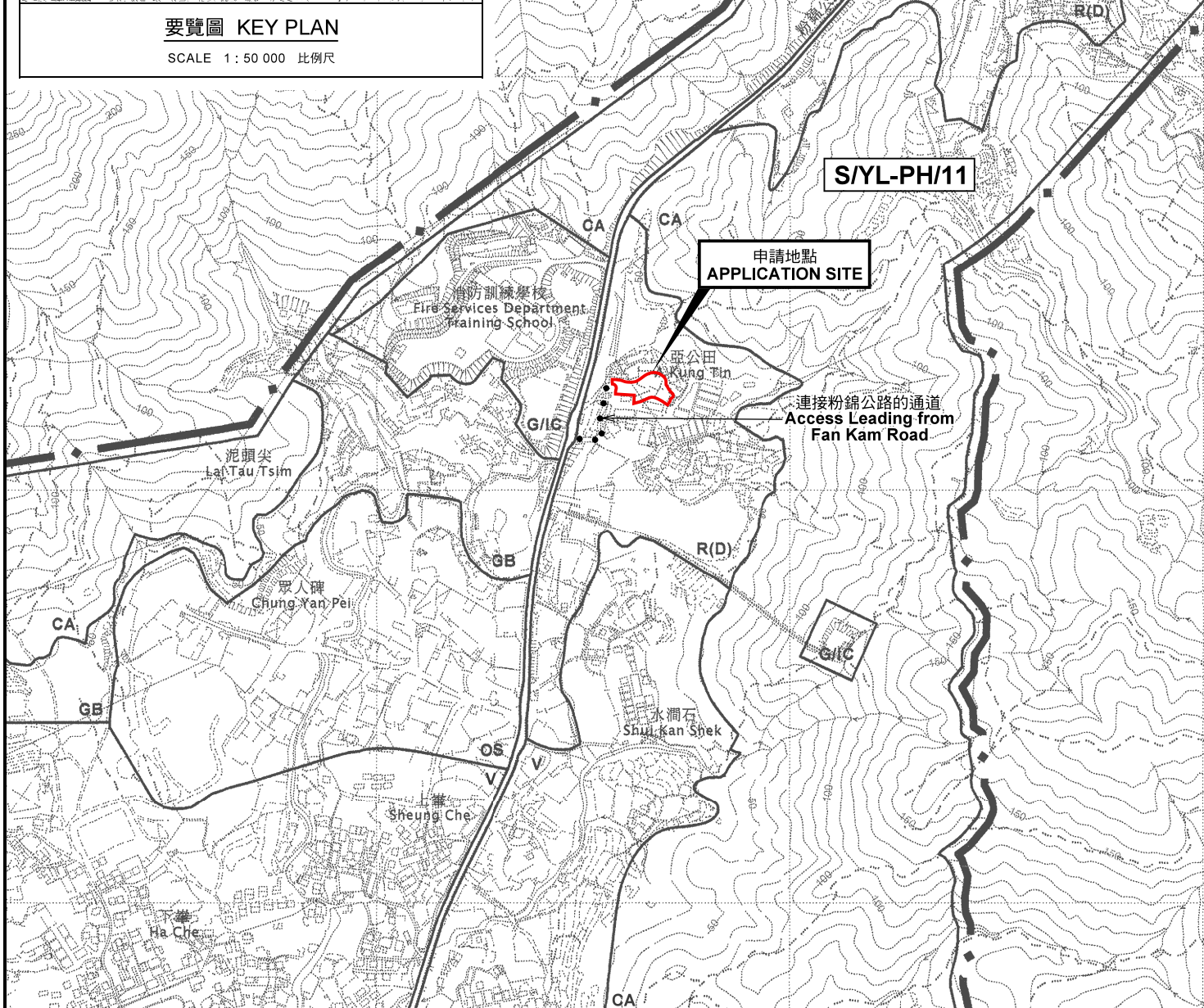
繪圖 DRAWING
A-2

申請地點界線只作識別用
APPLICATION SITE BOUNDARY
FOR IDENTIFICATION PURPOSE ONLY



要覽圖 KEY PLAN

SCALE 1:50 000 比例尺



位置圖 LOCATION PLAN

本摘要圖於2022年4月28日擬備，
所根據的資料為於2006年10月17日
核准的分區計劃大綱圖編號 S/YL-PH/11
EXTRACT PLAN PREPARED ON 28.4.2022
BASED ON OUTLINE ZONING PLAN No.
S/YL-PH/11 APPROVED ON 17.10.2006

擬議臨時存放建築材料連附屬辦公室（為期3年）及填土工程
元朗八鄉丈量約份第111約地段第22號（部分）及第24號（部分）
PROPOSED TEMPORARY STORAGE OF
CONSTRUCTION MATERIALS WITH ANCILLARY OFFICE
FOR A PERIOD OF 3 YEARS AND LAND FILLING
LOTS 22 (PART) AND 24 (PART) IN D.D. 111,
PAT HEUNG, YUEN LONG

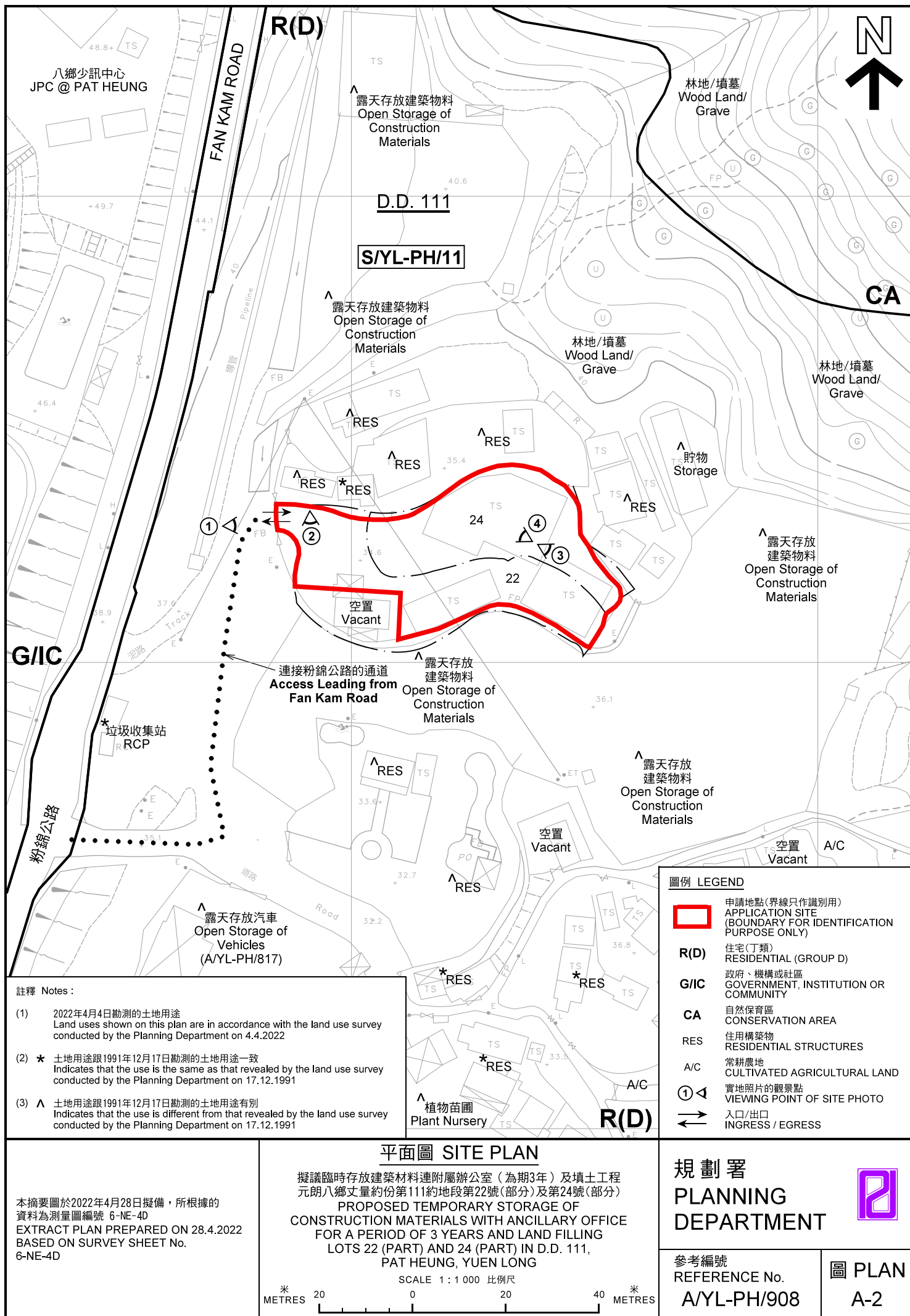
SCALE 1:7 500 比例尺
米 100 0 100 200 300 米
METRES

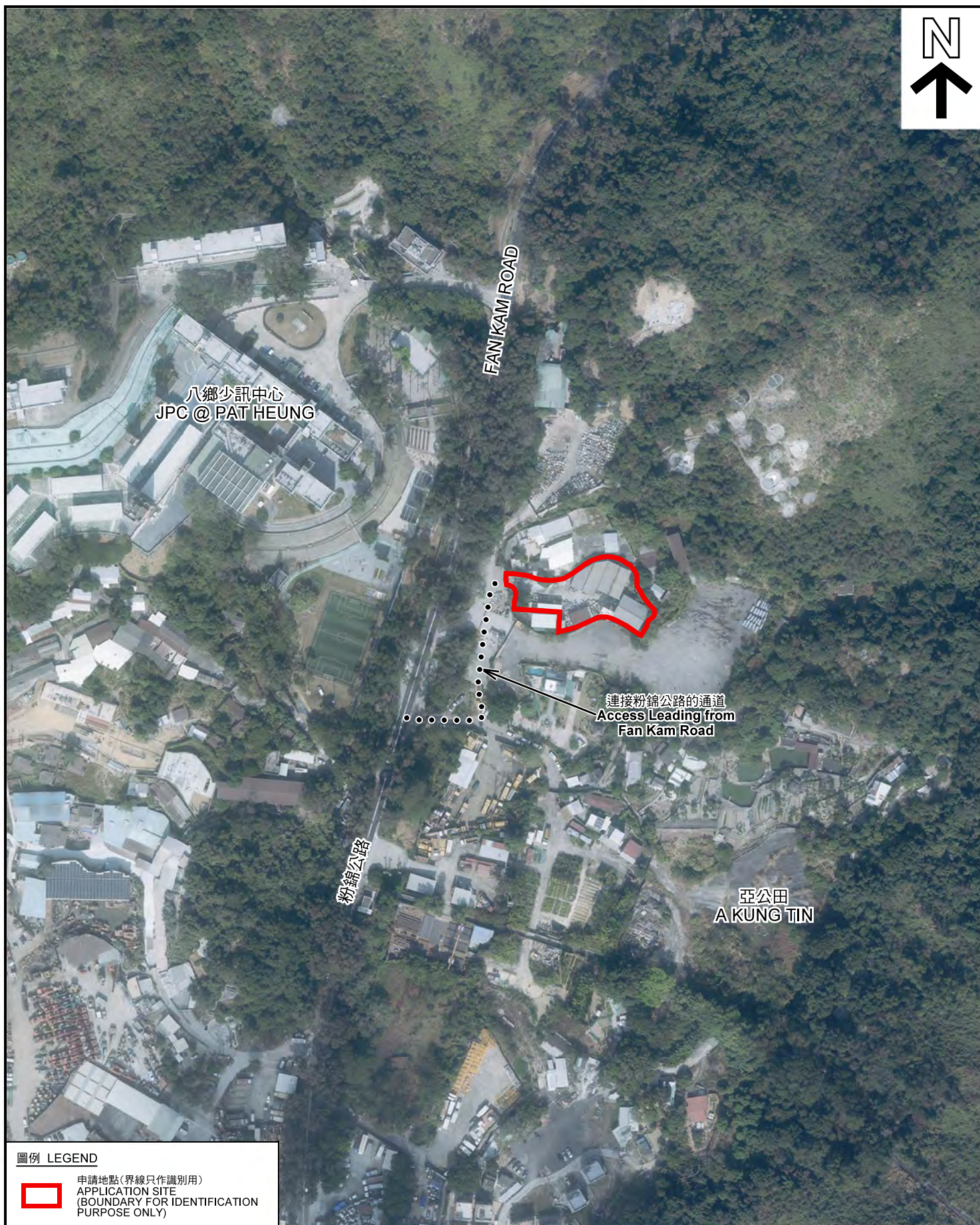
規劃署
PLANNING
DEPARTMENT



參考編號
REFERENCE No.
A/YL-PH/908

圖 PLAN
A-1





圖例 LEGEND



申請地點(界線只作識別用)
APPLICATION SITE
(BOUNDARY FOR IDENTIFICATION
PURPOSE ONLY)

本摘要圖於2022年3月17日擬備，所根據的資料為地政總署於2021年1月19日拍得的航攝照片編號 E132218C
EXTRACT PLAN PREPARED ON 17.3.2022
BASED ON AERIAL PHOTO No.
E132218C TAKEN ON 19.1.2021
BY LANDS DEPARTMENT

航攝照片 AERIAL PHOTO

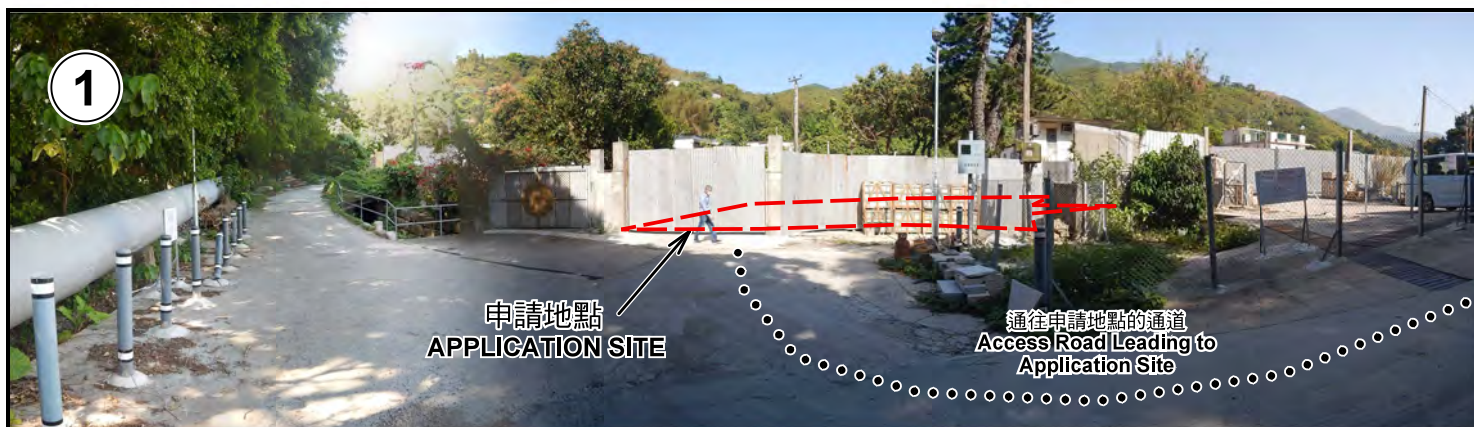
擬議臨時存放建築材料連附屬辦公室（為期3年）及填土工程
元朗八鄉丈量約份第111約地段第22號（部分）及第24號（部分）
PROPOSED TEMPORARY STORAGE OF
CONSTRUCTION MATERIALS WITH ANCILLARY OFFICE
FOR A PERIOD OF 3 YEARS AND LAND FILLING
LOTS 22 (PART) AND 24 (PART) IN D.D. 111,
PAT HEUNG, YUEN LONG

規劃署
PLANNING
DEPARTMENT



參考編號
REFERENCE No.
A/YL-PH/908

圖 PLAN
A-3



申請地點界線只作識別用 APPLICATION SITE BOUNDARY FOR IDENTIFICATION PURPOSE ONLY

實地照片 SITE PHOTOS

擬議臨時存放建築材料連附屬辦公室（為期3年）及填土工程
元朗八鄉丈量約份第111約地段第22號（部分）及第24號（部分）
PROPOSED TEMPORARY STORAGE OF
CONSTRUCTION MATERIALS WITH ANCILLARY OFFICE
FOR A PERIOD OF 3 YEARS AND LAND FILLING
LOTS 22 (PART) AND 24 (PART) IN D.D. 111,
PAT HEUNG, YUEN LONG

規劃署
PLANNING
DEPARTMENT



參考編號
REFERENCE No.
A/YL-PH/908

圖 PLAN
A-4

本圖於2022年4月21日擬備，所根據的
資料為攝於2022年4月4日的實地照片
PLAN PREPARED ON 21.4.2022
BASED ON SITE PHOTOS
TAKEN ON 4.4.2022