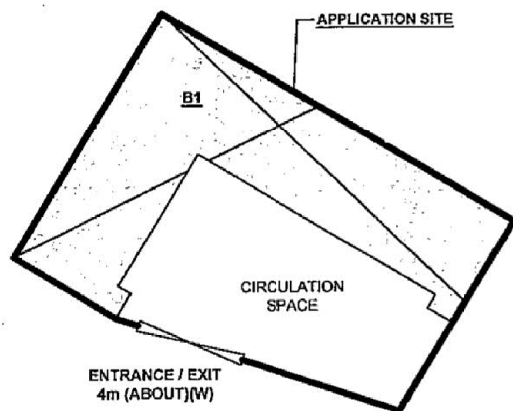
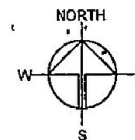
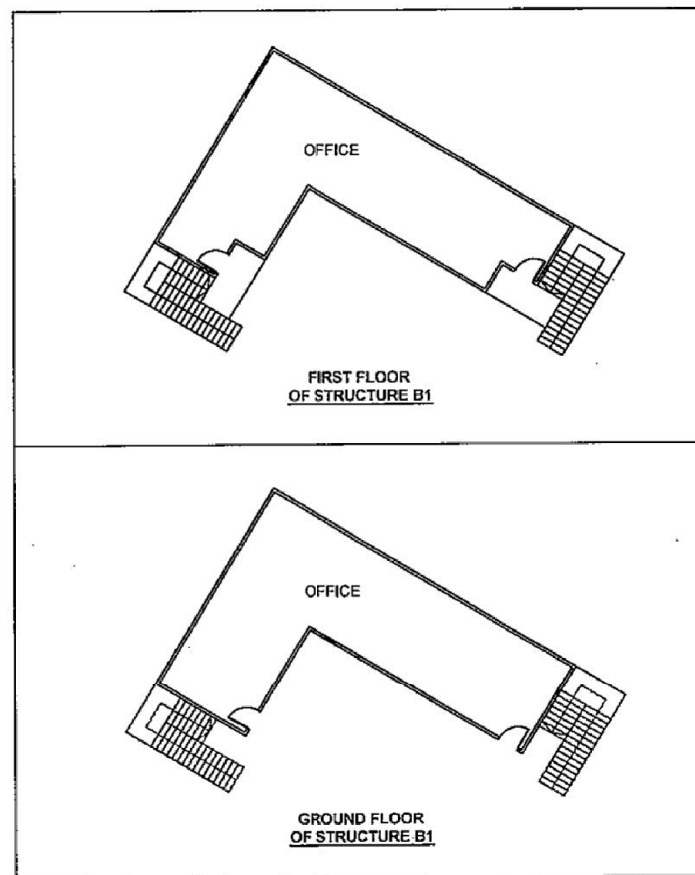


# DEVELOPMENT PARAMETERS

APPLICATION SITE AREA	: 144m <sup>2</sup>	(ABOUT)
COVERED AREA	: 83m <sup>2</sup>	(ABOUT)
UNCOVERED AREA	: 61m <sup>2</sup>	(ABOUT)
PLOT RATIO	: 1.2	(ABOUT)
SITE COVERAGE	: 58%	(ABOUT)
NO. OF STRUCTURE	: 1	
DOMESTIC GFA	: NOT APPLICABLE	
NON-DOMESTIC GFA	: 166m <sup>2</sup>	(ABOUT)
TOTAL GFA	: 166m <sup>2</sup>	(ABOUT)
BUILDING HEIGHT	: 7.2m	(ABOUT)
NO. OF STOREY	: 2	



STRUCTURE	USE	COVERED AREA	GFA	BUILDING HEIGHT
B1	OFFICE (G/F) OFFICE (1/F)	83m <sup>2</sup> (ABOUT)	83m <sup>2</sup> (ABOUT) 83m <sup>2</sup> (ABOUT)	7.2m (ABOUT) (2-STOREY)
TOTAL		83m <sup>2</sup> (ABOUT)	166m <sup>2</sup> (ABOUT)	



PLANNING CONSULTANT  
R-RICHES PROPERTY  
CONSULTANTS LIMITED

PROJECT  
PROPOSED TEMPORARY  
OFFICE FOR A PERIOD OF 3  
YEARS

SITE LOCATION  
LOTS 1576 (PART) AND 1584 S.A.  
SS.2 (PART) IN D.D. 111, PAT  
HEUNG, YUEN LONG, NEW  
TERRITORIES

SCALE  
1:250 @ A4

DRAWN BY  
MIN

DATE  
18.1.2022

CHECKED BY

DATE

APPROVED BY

DATE

DWG. TITLE  
LAYOUT PLAN

DWG. NO.

P04

YEAR

001

## LEGEND

- APPLICATION SITE
- STRUCTURE
- ENTRANCE / EXIT

(摘錄自申請人於 25.2.2022 呈交的申請書)  
(Extract from Applicant's  
Submission of 25.2.2022)

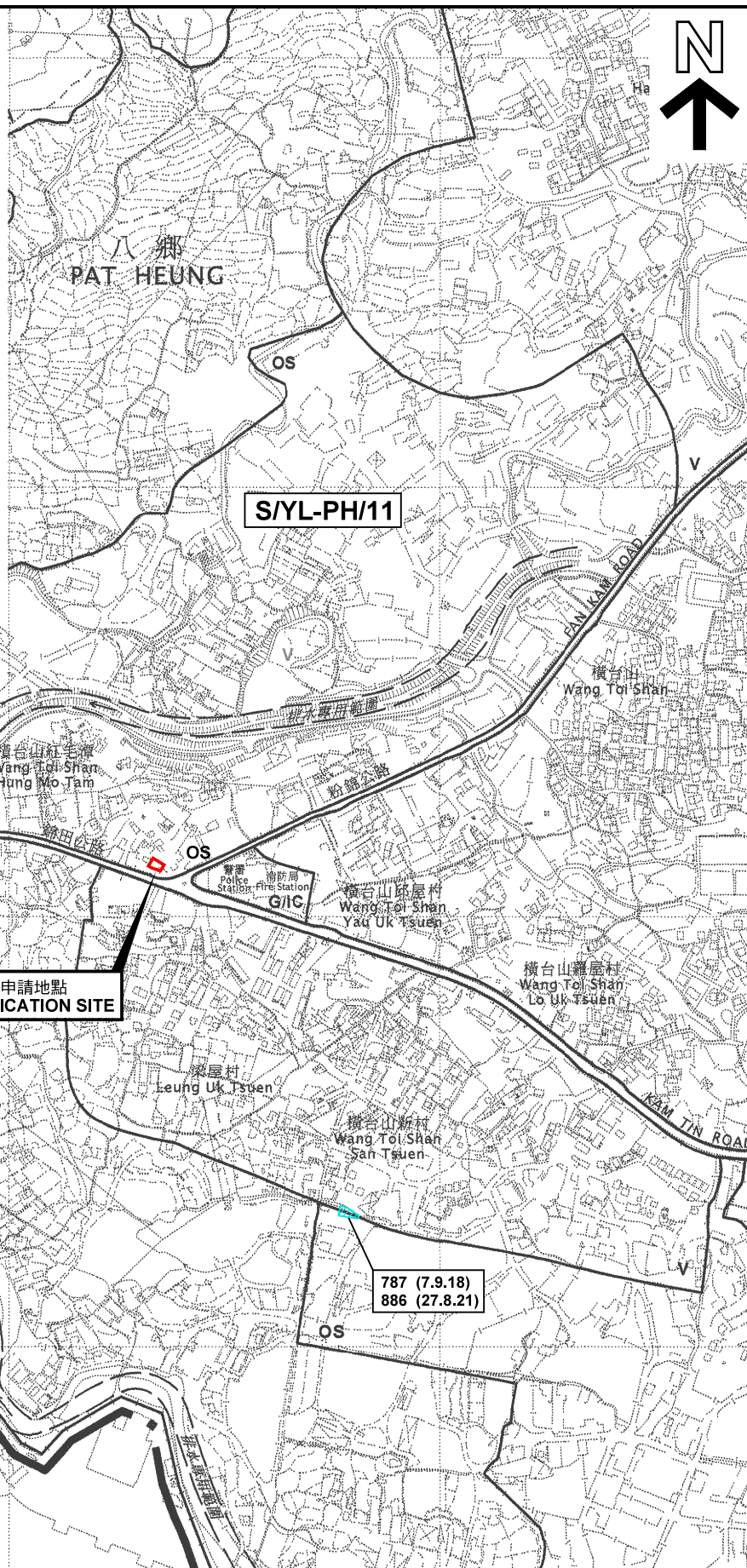
參考編號  
REFERENCE No.  
A/YL-PH/911

繪圖 DRAWING  
A-1



要覽圖 KEY PLAN

SCALE 1 : 50 000 比例尺



圖例 LEGEND

- |                |                                |
|----------------|--------------------------------|
| 243 (17.7.04)  | 獲批准的申請<br>APPROVED APPLICATION |
| 244 (17.7.04)  | 被拒絕的申請<br>REJECTED APPLICATION |
| 72 (10.9.99) X | 已撤銷<br>REVOKED                 |
| ---            | 會議日期<br>DATE OF MEETING        |
| ---            | 申請編號<br>APPLICATION NUMBER     |

申請地點界線只作識別用  
APPLICATION SITE BOUNDARY  
FOR IDENTIFICATION PURPOSE ONLY

位置圖及同類申請 LOCATION PLAN WITH SIMILAR APPLICATIONS

臨時辦公室用途(為期三年)  
新界元朗八鄉丈量約份第111約地段第1576號(部分)及  
第1584號A分段第2小分段(部分)  
TEMPORARY OFFICE FOR A PERIOD OF 3 YEARS  
LOTS 1576 (PART) AND 1584 S.A ss.2 (PART) IN D.D. 111,  
PAT HEUNG, YUEN LONG, NEW TERRITORIES

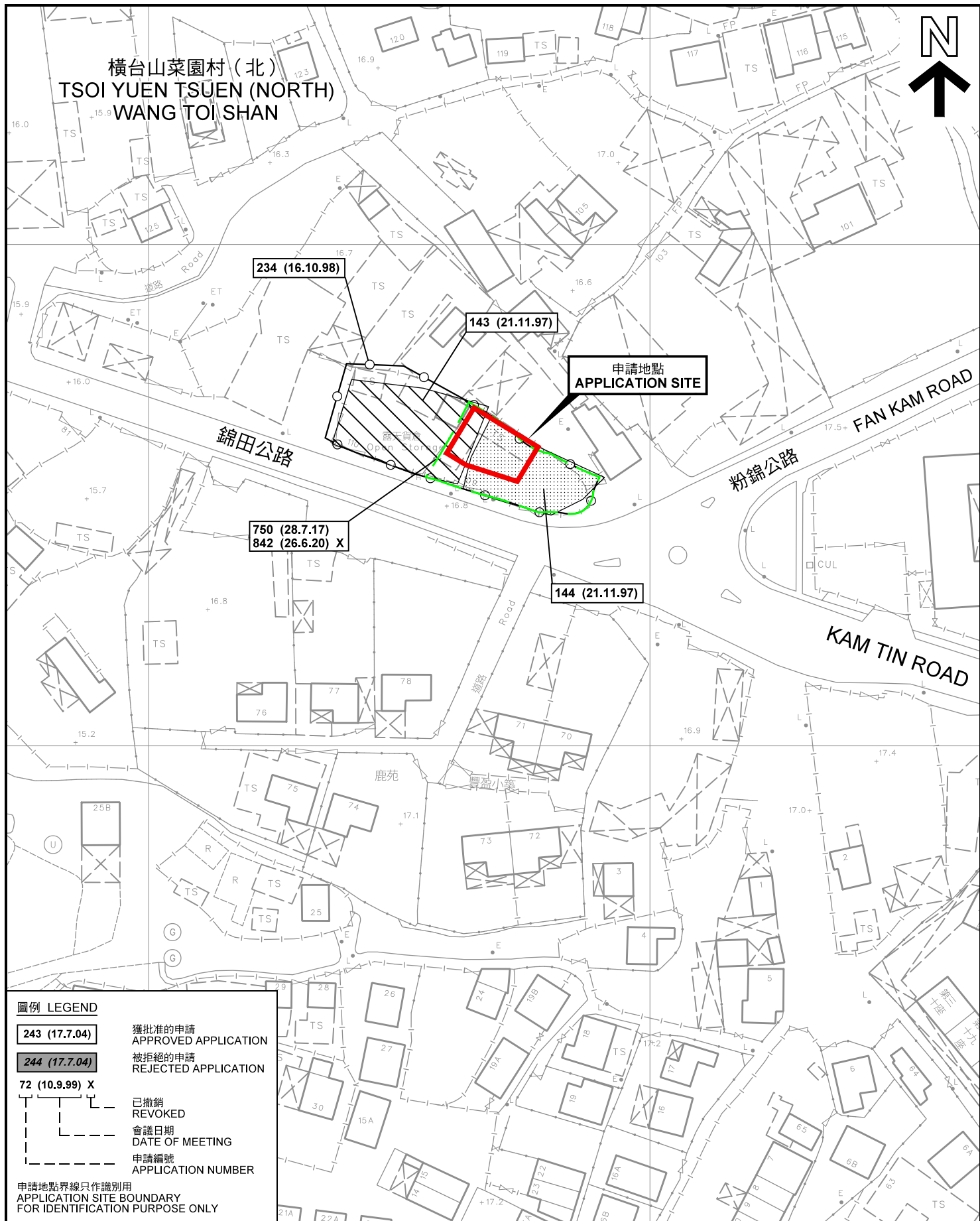
SCALE 1 : 7 500 比例尺  
米 100 0 100 200 300 米  
METRES

規劃署  
PLANNING  
DEPARTMENT



參考編號  
REFERENCE No.  
A/YL-PH/911

圖 PLAN  
A-1a



先前申請圖 PREVIOUS APPLICATION PLAN

臨時辦公室用途(為期三年)  
新界元朗八鄉丈量約份第111約地段第1576號(部分)及  
第1584號A分段第2小分段(部分)  
TEMPORARY OFFICE FOR A PERIOD OF 3 YEARS  
LOTS 1576 (PART) AND 1584 S.A ss.2 (PART) IN D.D. 111,  
PAT HEUNG, YUEN LONG, NEW TERRITORIES

SCALE 1 : 1 000 比例尺

米 20 0 20 40 米  
METRES

規劃署  
PLANNING  
DEPARTMENT

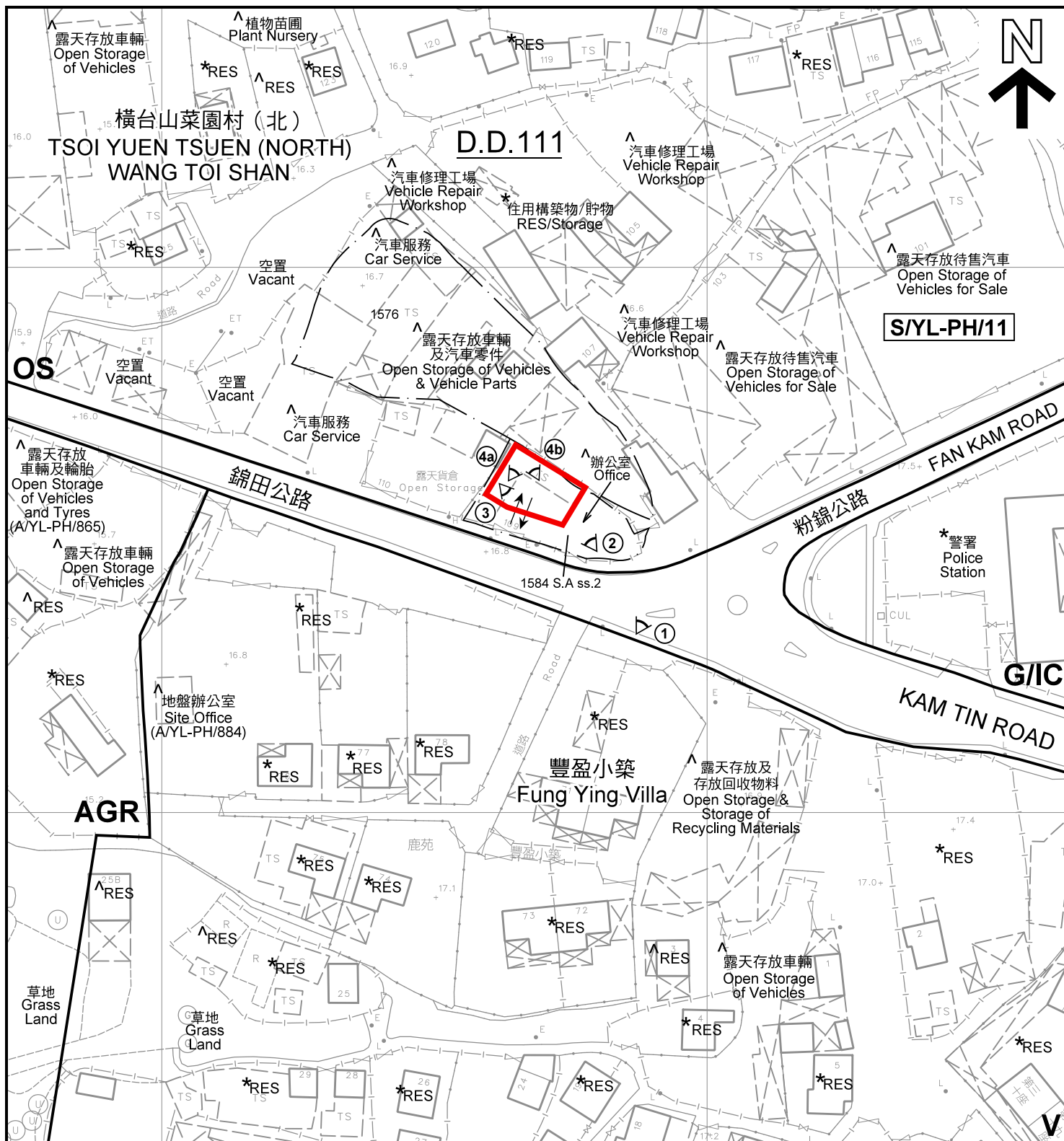


參考編號  
REFERENCE No.  
A/YL-PH/911

圖 PLAN  
A-1b

本摘要圖於2022年4月19日擬備, 所根據的  
資料為測量圖編號 6-NE-9C及14A  
EXTRACT PLAN PREPARED ON 19.4.2022  
BASED ON SURVEY SHEETS No.  
6-NE-9C & 14A





#### 註釋 Notes:

- (1) 2022年4月8日勘測的土地用途  
Land uses shown on this plan are in accordance with the land use survey conducted by the Planning Department on 8.4.2022
- (2) \* 土地用途跟1991年12月勘測的土地用途一致  
Indicates that the use is the same as that revealed by the land use survey conducted by the Planning Department in Dec 1991
- (3) ^ 土地用途跟1991年12月勘測的土地用途有別  
Indicates that the use is different from that revealed by the land use survey conducted by the Planning Department in Dec 1991

#### 圖例 LEGEND

- |            |  |            |   |
|------------|--|------------|---|
|            | 申請地點(界線只作識別用)<br>APPLICATION SITE<br>(BOUNDARY FOR IDENTIFICATION<br>PURPOSE ONLY) | <b>G/C</b> | 政府、機構或社區<br>GOVERNMENT, INSTITUTION OR<br>COMMUNITY |
| <b>V</b>   | 鄉村式發展<br>VILLAGE TYPE DEVELOPMENT  | <b>RES</b> | 住用構築物<br>RESIDENTIAL STRUCTURES                     |
| <b>OS</b>  | 露天貯物<br>OPEN STORAGE   |            | 實地照片的觀景點<br>VIEWING POINT OF SITE PHOTO             |
| <b>AGR</b> | 農業<br>AGRICULTURE  |            | 入口/出口<br>INGRESS / EGRESS                           |

#### 平面圖 SITE PLAN

臨時辦公室用途(為期三年)  
新界元朗八鄉丈量約份第111約地段第1576號(部分)及  
第1584號A分段第2小分段(部分)  
TEMPORARY OFFICE FOR A PERIOD OF 3 YEARS  
LOTS 1576 (PART) AND 1584 S.A ss.2 (PART) IN D.D. 111,  
PAT HEUNG, YUEN LONG, NEW TERRITORIES

本摘要圖於2022年4月19日擬備, 所根據的  
資料為測量圖編號 6-NE-9C及14A  
EXTRACT PLAN PREPARED ON 19.4.2022  
BASED ON SURVEY SHEETS No.  
6-NE-9C & 14A

SCALE 1 : 1 000 比例尺  
米 METRES 20 0 20 40 米 METRES

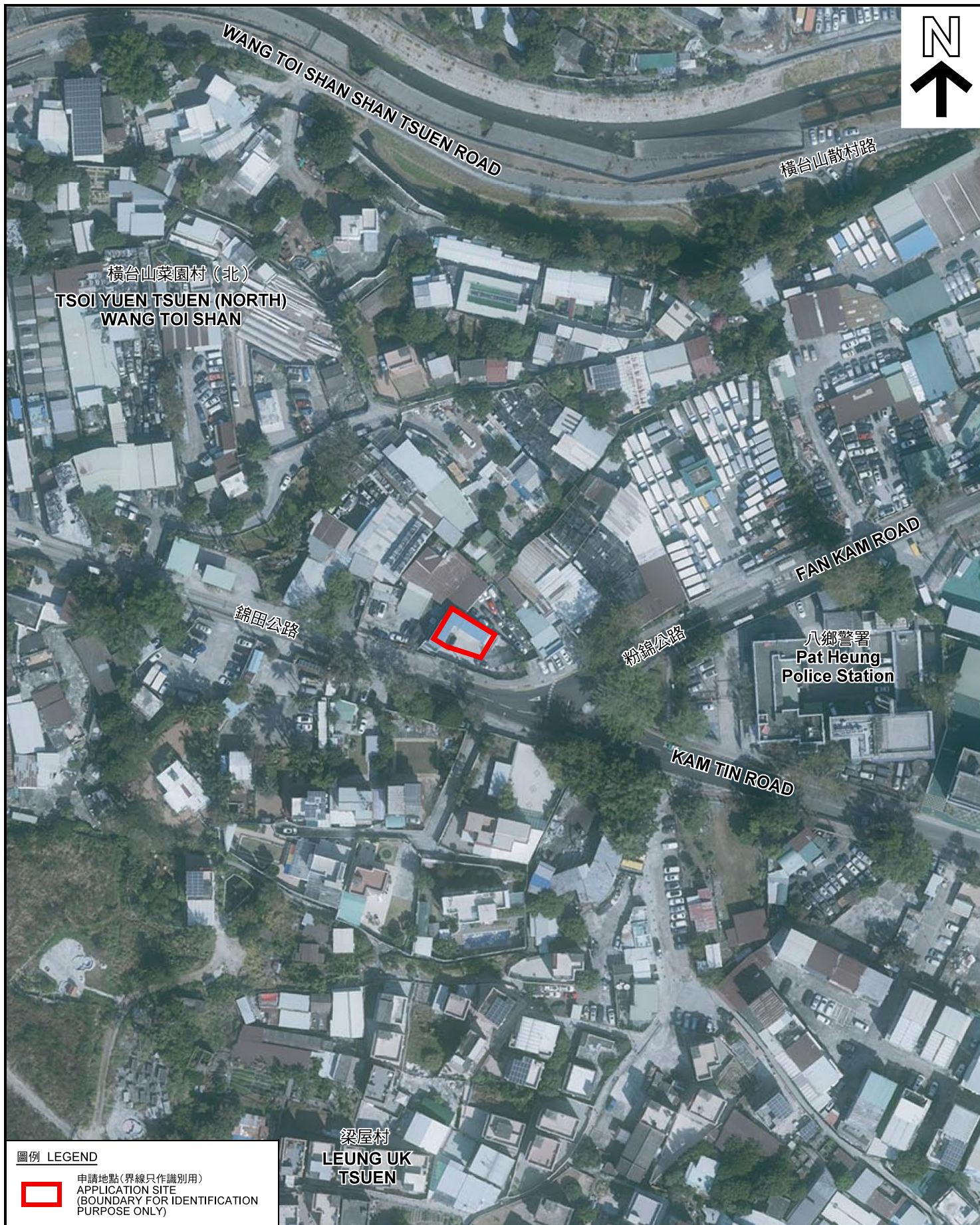
規劃署  
PLANNING  
DEPARTMENT



參考編號  
REFERENCE No.  
A/YL-PH/911

圖 PLAN  
A-2





圖例 LEGEND



申請地點(界線只作識別用)  
APPLICATION SITE  
(BOUNDARY FOR IDENTIFICATION  
PURPOSE ONLY)

本摘要圖於2022年4月19日擬備，所根據的資料為地政總署於2021年1月19日拍得的航攝照片編號 E130413C  
EXTRACT PLAN PREPARED ON 19.4.2022  
BASED ON AERIAL PHOTO No.  
E130413C TAKEN ON 19.1.2021  
BY LANDS DEPARTMENT

航攝照片 AERIAL PHOTO

臨時辦公室用途(為期三年)  
新界元朗八鄉丈量約份第111約地段第1576號(部分)及  
第1584號A分段第2小分段(部分)  
TEMPORARY OFFICE FOR A PERIOD OF 3 YEARS  
LOTS 1576 (PART) AND 1584 S.A ss.2 (PART) IN D.D. 111,  
PAT HEUNG, YUEN LONG, NEW TERRITORIES

規劃署  
PLANNING  
DEPARTMENT



參考編號  
REFERENCE No.  
A/YL-PH/911

圖 PLAN  
A-3





申請地點界線只作識別用 APPLICATION SITE BOUNDARY FOR IDENTIFICATION PURPOSE ONLY

### 實地照片 SITE PHOTOS

本圖於2022年4月19日擬備，所根據的資料為攝於2022年4月8日的實地照片  
PLAN PREPARED ON 19.4.2022  
BASED ON SITE PHOTOS  
TAKEN ON 8.4.2022

臨時辦公室用途(為期三年)  
新界元朗八鄉丈量約份第111約地段第1576號(部分)及  
第1584號A分段第2小分段(部分)  
TEMPORARY OFFICE FOR A PERIOD OF 3 YEARS  
LOTS 1576 (PART) AND 1584 S.A ss.2 (PART) IN D.D. 111,  
PAT HEUNG, YUEN LONG, NEW TERRITORIES

規劃署  
PLANNING  
DEPARTMENT



參考編號  
REFERENCE No.  
A/YL-PH/911

圖 PLAN  
A-4a





申請地點界線只作識別用 APPLICATION SITE BOUNDARY FOR IDENTIFICATION PURPOSE ONLY

### 實地照片 SITE PHOTOS

本圖於2022年4月19日擬備，所根據的資料為攝於2022年4月8日的實地照片  
PLAN PREPARED ON 19.4.2022  
BASED ON SITE PHOTOS  
TAKEN ON 8.4.2022

臨時辦公室用途(為期三年)  
新界元朗八鄉丈量約份第111約地段第1576號(部分)及  
第1584號A分段第2小分段(部分)  
TEMPORARY OFFICE FOR A PERIOD OF 3 YEARS  
LOTS 1576 (PART) AND 1584 S.A ss.2 (PART) IN D.D. 111,  
PAT HEUNG, YUEN LONG, NEW TERRITORIES

規劃署  
PLANNING  
DEPARTMENT



參考編號  
REFERENCE No.  
A/YL-PH/911

圖 PLAN  
A-4b