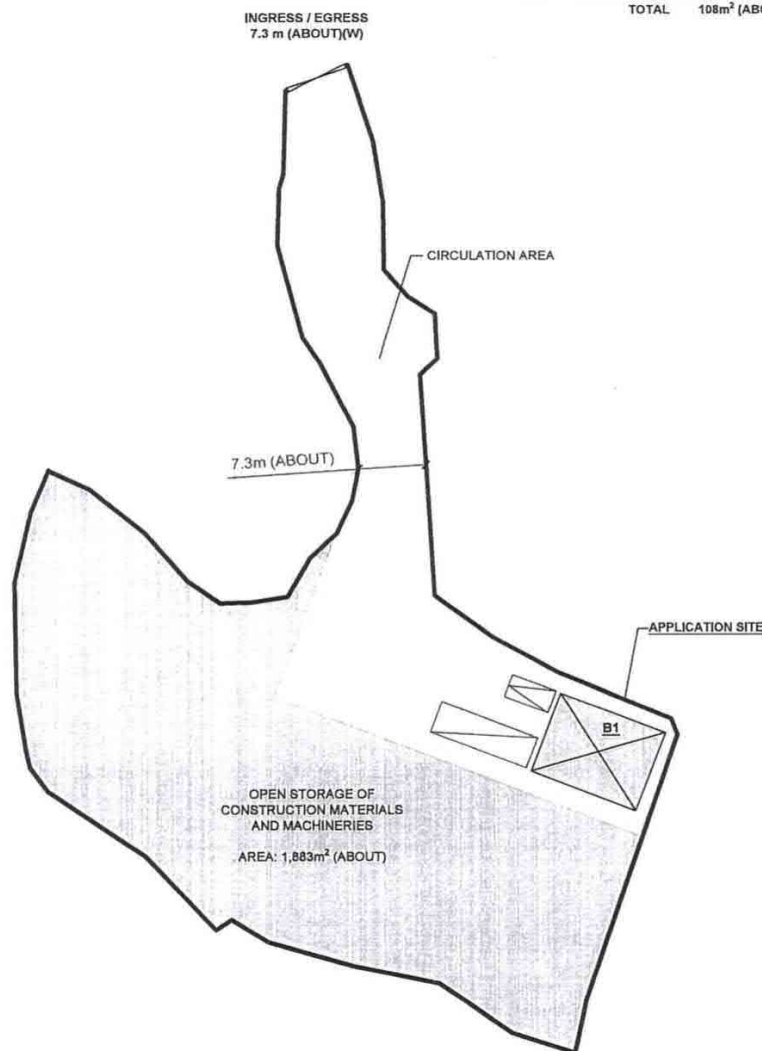
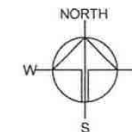


DEVELOPMENT PARAMETERS

APPLICATION SITE AREA	: 2,650 m ²	(ABOUT)
COVERED AREA	: 108 m ²	(ABOUT)
UNCOVERED AREA	: 2,542 m ²	(ABOUT)
PLOT RATIO	: 0.08	(ABOUT)
SITE COVERAGE	: 4%	(ABOUT)
NO. OF STRUCTURE	: 1	
DOMESTIC GFA	: N/A	
NON-DOMESTIC GFA	: 216 m ²	(ABOUT)
BUILDING HEIGHT	: 7 m	(ABOUT)
NO. OF STOREY	: 2	

STRUCTURE	USE	COVERED AREA	GFA	BUILDING HEIGHT
B1	SITE OFFICE WASHROOM METER ROOM	108m ² (ABOUT)	216m ² (ABOUT)	7m (ABOUT)(2-STOREY)
TOTAL		108m ² (ABOUT)	216m ² (ABOUT)	



LEGEND

	APPLICATION SITE
	STRUCTURE
	PARKING SPACE
	LOADING / UNLOADING SPACE
	INGRESS / EGRESS

PARKING AND LOADING / UNLOADING PROVISIONS

NO. OF PRIVATE CAR PARKING SPACE	: 1
DIMENSION OF PARKING SPACE	: 5 m (L) x 2.5 m (W)
NO. OF LUL SPACE FOR MEDIUM GOODS VEHICLE	: 1
DIMENSION OF LUL SPACE	: 11 m (L) x 3.5 m (W)

PLANNING CONSULTANT



PROJECT

PROPOSED TEMPORARY OPEN STORAGE OF CONSTRUCTION MATERIALS AND MACHINERIES WITH ANCILLARY FACILITIES FOR A PERIOD OF 3 YEARS

SITE LOCATION

LOT 55 (PART) IN D.D. 108, PAT HEUNG, YUEN LONG, NEW TERRITORIES

SCALE

1:100 @ 1/4" = 1'-0"

DRAWN BY	DATE
MN	2.5.2023
REVIEWED BY	DATE
APPROVED BY	DATE

DWG. TITLE
LAYOUT PLAN

DWG NO.	VER.
PLAN 4	001

(摘錄自申請人於 11.5.2023 呈交的申請書)
(Extract from Applicant's
Submission of 11.5.2023)

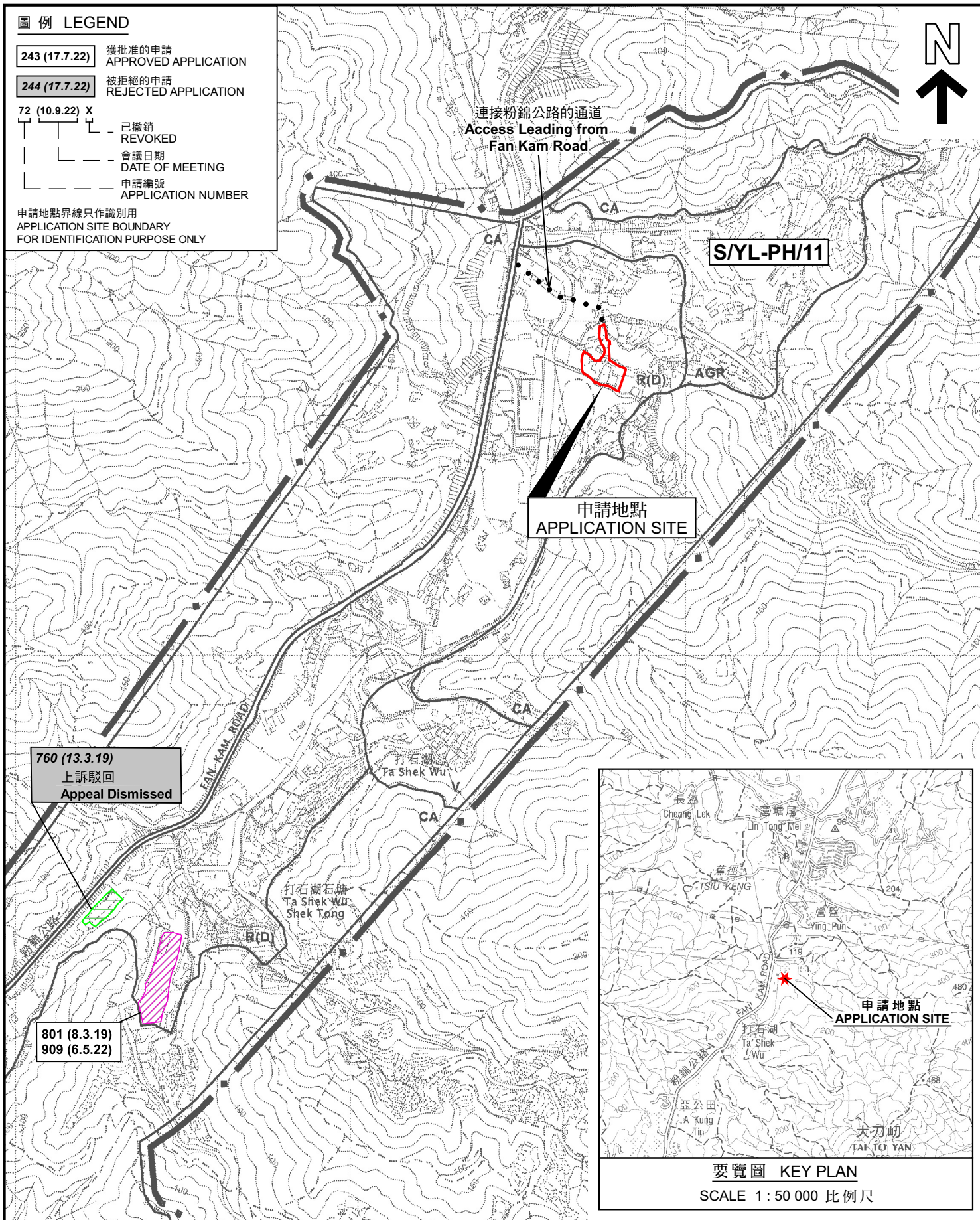
參考編號
REFERENCE No.
A/YL-PH/953

繪圖
DRAWING
A - 1

圖例 LEGEND

- 243 (17.7.22) 獲批准的申請
APPROVED APPLICATION
- 244 (17.7.22) 被拒絕的申請
REJECTED APPLICATION
- 72 (10.9.22) X
已撤銷
REVOKED
- 會議日期
DATE OF MEETING
- 申請編號
APPLICATION NUMBER

申請地點界線只作識別用
APPLICATION SITE BOUNDARY
FOR IDENTIFICATION PURPOSE ONLY



位置圖及同類申請 LOCATION PLAN WITH SIMILAR APPLICATIONS

本摘要圖於2023年6月16日擬備，
所根據的資料為於2006年10月17日
核准的分區計劃大綱圖編號 S/YL-PH/11
EXTRACT PLAN PREPARED ON 16.6.2023
BASED ON OUTLINE ZONING PLAN No.
S/YL-PH/11 APPROVED ON 17.10.2006

擬議臨時露天存放建築物及機械連附屬設施（為期3年）及填土工程
元朗八鄉丈量約份第108約地段第55號（部分）
PROPOSED TEMPORARY OPEN STORAGE OF
CONSTRUCTION MATERIALS AND MACHINERIES WITH
ANCILLARY FACILITIES FOR A PERIOD OF 3 YEARS AND FILLING OF LAND
LOT 55 (PART) IN D.D. 108, PAT HEUNG, YUEN LONG

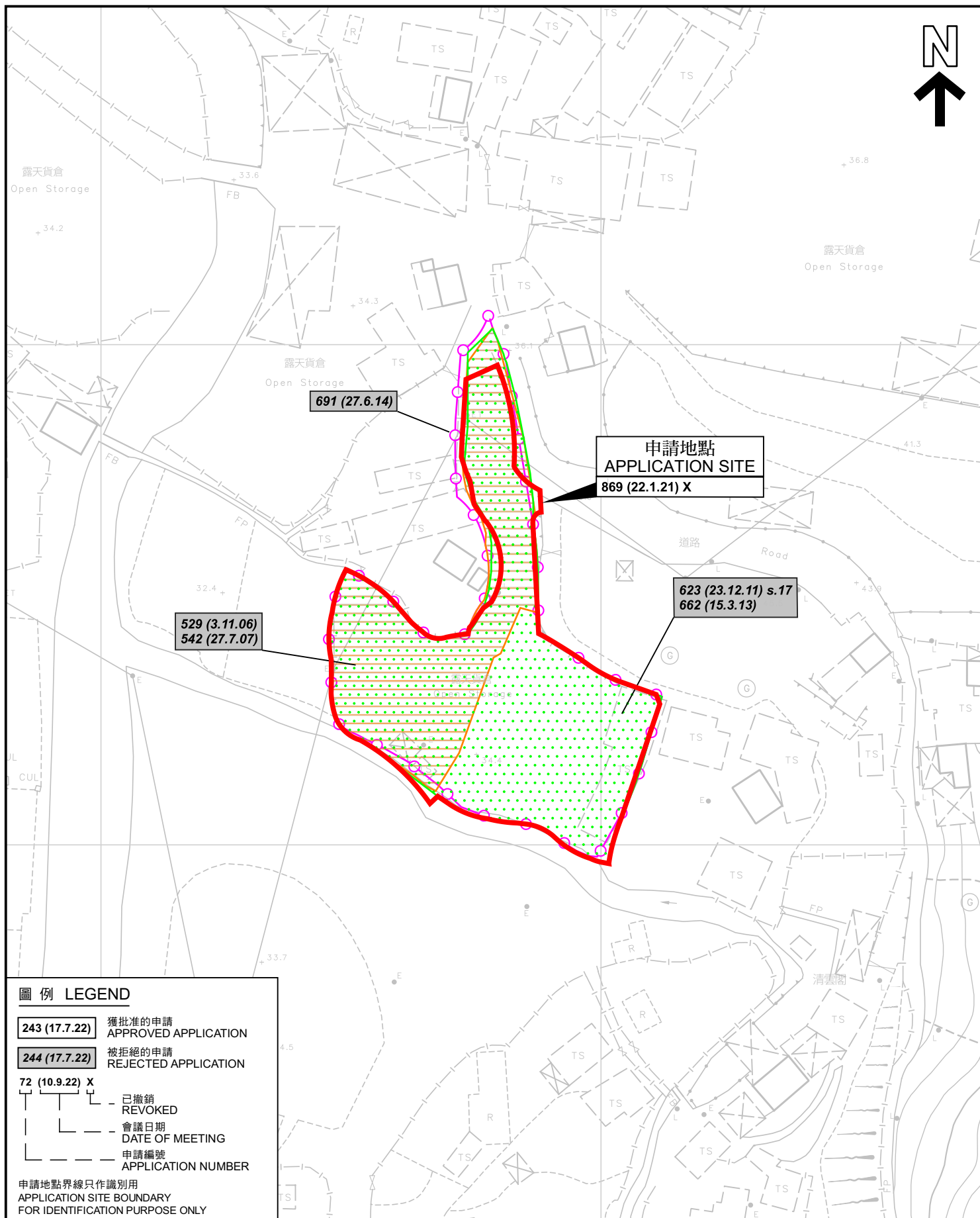
SCALE 1:7 500 比例尺
米 METRES 100 0 100 200 300 米 METRES

規劃署
PLANNING
DEPARTMENT



參考編號
REFERENCE No.
A/YL-PH/953

圖 PLAN
A-1a



先前申請圖 PREVIOUS APPLICATION PLAN

擬議臨時露天存放建築物料及機械連附屬設施（為期3年）及填土工程
元朗八鄉丈量約份第108約地段第55號（部分）
PROPOSED TEMPORARY OPEN STORAGE OF
CONSTRUCTION MATERIALS AND MACHINERIES WITH
ANCILLARY FACILITIES FOR A PERIOD OF 3 YEARS AND FILLING OF LAND
LOT 55 (PART) IN D.D. 108, PAT HEUNG, YUEN LONG

SCALE 1 : 1 000 比例尺
米 METRES 20 0 20 40 米 METRES

規劃署
PLANNING
DEPARTMENT



參考編號
REFERENCE No.
A/YL-PH/953

圖 PLAN
A-1b

本摘要圖於2023年6月16日擬備，
所根據的資料為測量圖編號
2-SE-25D

EXTRACT PLAN PREPARED ON 16.6.2023
BASED ON SURVEY SHEET No.
2-SE-25D




圖例 LEGEND

 申請地點 (界線只作識別用)
APPLICATION SITE (BOUNDARY FOR IDENTIFICATION PURPOSE ONLY)

本摘要圖於2023年6月16日擬備，
所根據的資料為地政總署於2022年2月14日
拍得的航攝照片編號 E148099C
EXTRACT PLAN PREPARED ON 16.6.2023
BASED ON AERIAL PHOTO No.
E148099C TAKEN ON 14.2.2022
BY LANDS DEPARTMENT

航攝照片 AERIAL PHOTO

擬議臨時露天存放建築物料及機械連附屬設施 (為期3年) 及填土工程
元朗八鄉丈量約份第108約地段第55號 (部分)
PROPOSED TEMPORARY OPEN STORAGE OF
CONSTRUCTION MATERIALS AND MACHINERIES WITH
ANCILLARY FACILITIES FOR A PERIOD OF 3 YEARS AND FILLING OF LAND
LOT 55 (PART) IN D.D. 108, PAT HEUNG, YUEN LONG

規劃署 PLANNING DEPARTMENT		
參考編號 REFERENCE No. A/YL-PH/953	圖 PLAN A-3	

1



2



申請地點界線只作識別用 APPLICATION SITE BOUNDARY FOR IDENTIFICATION PURPOSE ONLY

實地照片 SITE PHOTOS

本圖於2023年6月16日擬備，所根據的資料為攝於2023年5月16日的實地照片
PLAN PREPARED ON 16.6.2023
BASED ON SITE PHOTOS
TAKEN ON 16.5.2023

擬議臨時露天存放建築物料及機械連附屬設施（為期3年）及填土工程
元朗八鄉丈量約份第108約地段第55號（部分）
PROPOSED TEMPORARY OPEN STORAGE OF
CONSTRUCTION MATERIALS AND MACHINERIES WITH
ANCILLARY FACILITIES FOR A PERIOD OF 3 YEARS AND FILLING OF LAND
LOT 55 (PART) IN D.D. 108, PAT HEUNG, YUEN LONG

規劃署
PLANNING
DEPARTMENT



參考編號
REFERENCE No.
A/YL-PH/953

圖 PLAN
A-4a

3



4



申請地點界線只作識別用 APPLICATION SITE BOUNDARY FOR IDENTIFICATION PURPOSE ONLY

實地照片 SITE PHOTOS

本圖於2023年6月16日擬備，所根據的資料為攝於2023年5月16日的實地照片
PLAN PREPARED ON 16.6.2023
BASED ON SITE PHOTOS
TAKEN ON 16.5.2023

擬議臨時露天存放建築物料及機械連附屬設施（為期3年）及填土工程
元朗八鄉丈量約份第108約地段第55號（部分）
PROPOSED TEMPORARY OPEN STORAGE OF
CONSTRUCTION MATERIALS AND MACHINERIES WITH
ANCILLARY FACILITIES FOR A PERIOD OF 3 YEARS AND FILLING OF LAND
LOT 55 (PART) IN D.D. 108, PAT HEUNG, YUEN LONG

規 劃 署
PLANNING
DEPARTMENT



參考編號
REFERENCE No.
A/YL-PH/953

圖 PLAN
A-4b