

Project 項目名稱:

Proposed Temporary Shop & Services (Retail Shop for Selling Construction Material) and Wholesale of Construction Material for a Period of 3 Years at Lot 255 RP (Part) in D.D. 122, Ping Shan, Yuen Long, N.T.

Drawing Title 圖目:

Vehicular Access Plan

Drawing No. 圖號:

Figure 2

Remarks 備註:

●●● Vehicular access leading from Tsui Sing Road

Scale 比例:

1:7500

(摘錄自申請人於 3.6.2021 呈交的申請書)
(Extract from Applicant's Submission of 3.6.2021)

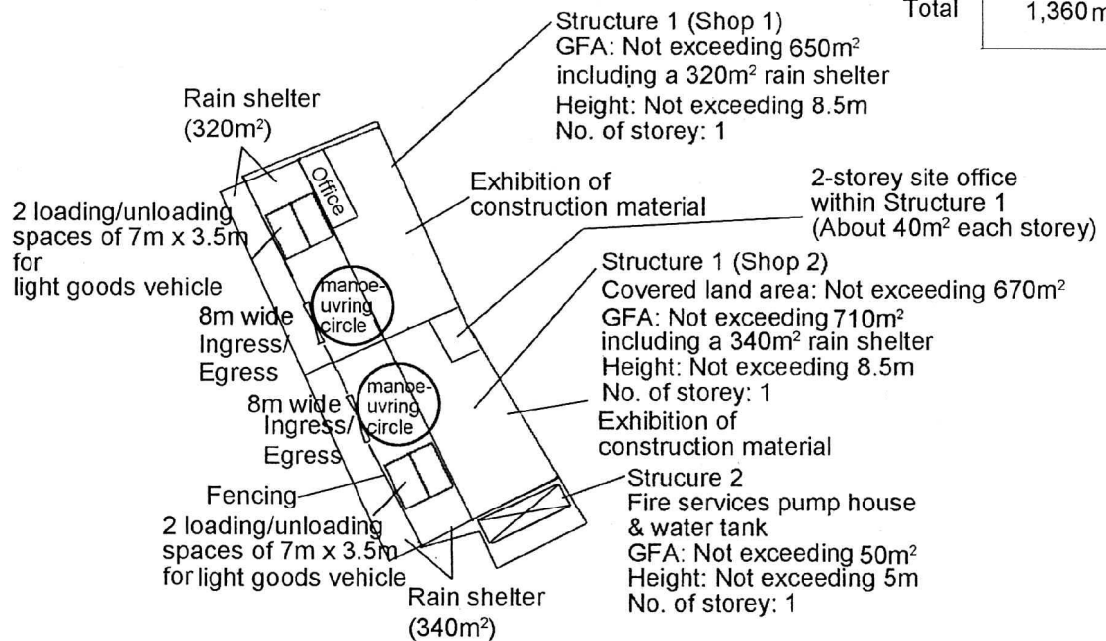
參考編號
REFERENCE No.
AYL-PS/639

繪圖 DRAWING
A-1



Breakdown of GFA of Structure 1

	Shop 1	Shop 2	GFA Sub-total
Size of the shop	310m ²	290m ²	600m ²
Size of the rain shelter	320m ²	340m ²	660m ²
Office	20m ²	80m ² (2-storeys)	100m ²
Total			1,360m ²



Project 項目名稱:

Proposed Temporary Shop & Services (Retail Shop for Selling Construction Material) and Wholesale of Construction Material for a Period of 3 Years at Lot 255 RP (Part) in D.D. 122, Ping Shan, Yuen Long, N.T.

Drawing Title 圖目:

Proposed Layout Plan

Drawing No. 圖號:

Figure 3

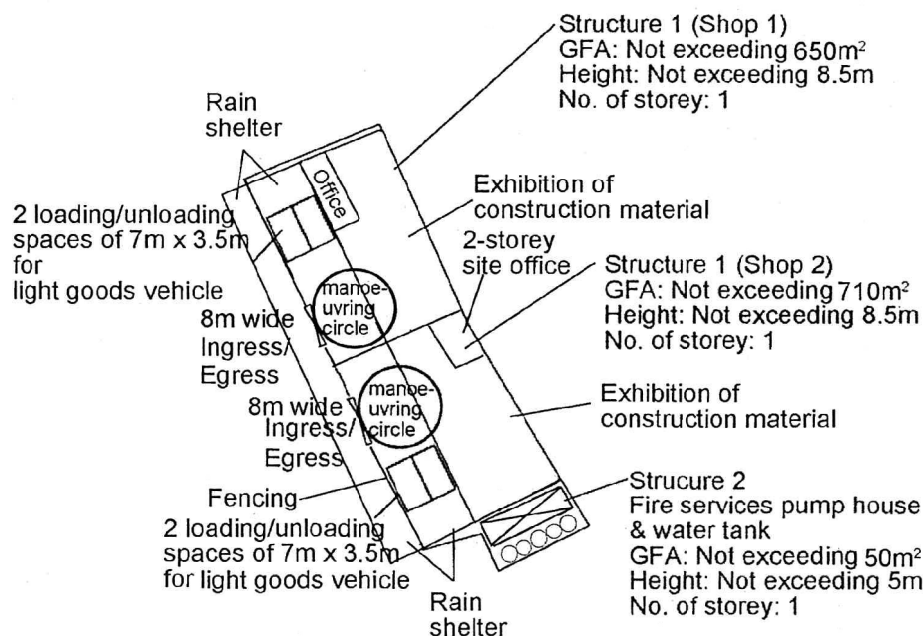
Remarks 備註:

Scale 比例:

1:1000



Tree	Approximate Height	Spacing
○ Existing <i>Bauhinia blakeana</i>	2.75m	4m

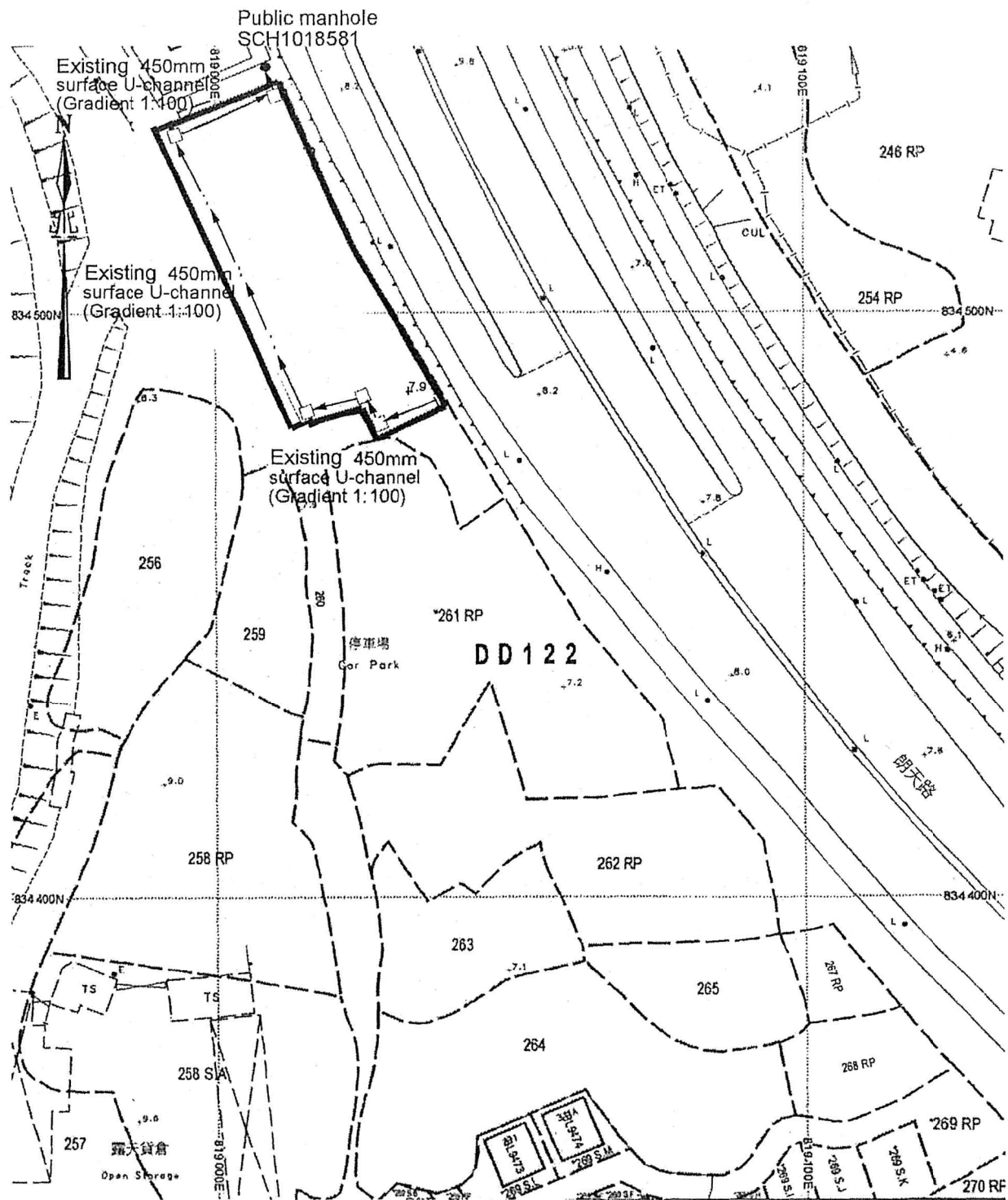


Project 項目名稱: Proposed Temporary Shop & Services (Retail Shop for Selling Construction Material) and Wholesale of Construction Material for a Period of 3 Years at Lot 255 RP (Part) in D.D. 122, Ping Shan, Yuen Long, N.T.	Drawing Title 圖目: Proposed Tree Preservation Plan	Remarks 備註:
	Drawing No. 圖號: Figure 4	Scale 比例: 1:1000

(摘錄自申請人於 3. 6. 2021 呈交的申請書)
(Extract from Applicant's Submission of 3.6.2021)

參考編號
REFERENCE No.
AYL-PS/639

繪圖 DRAWING
A-3

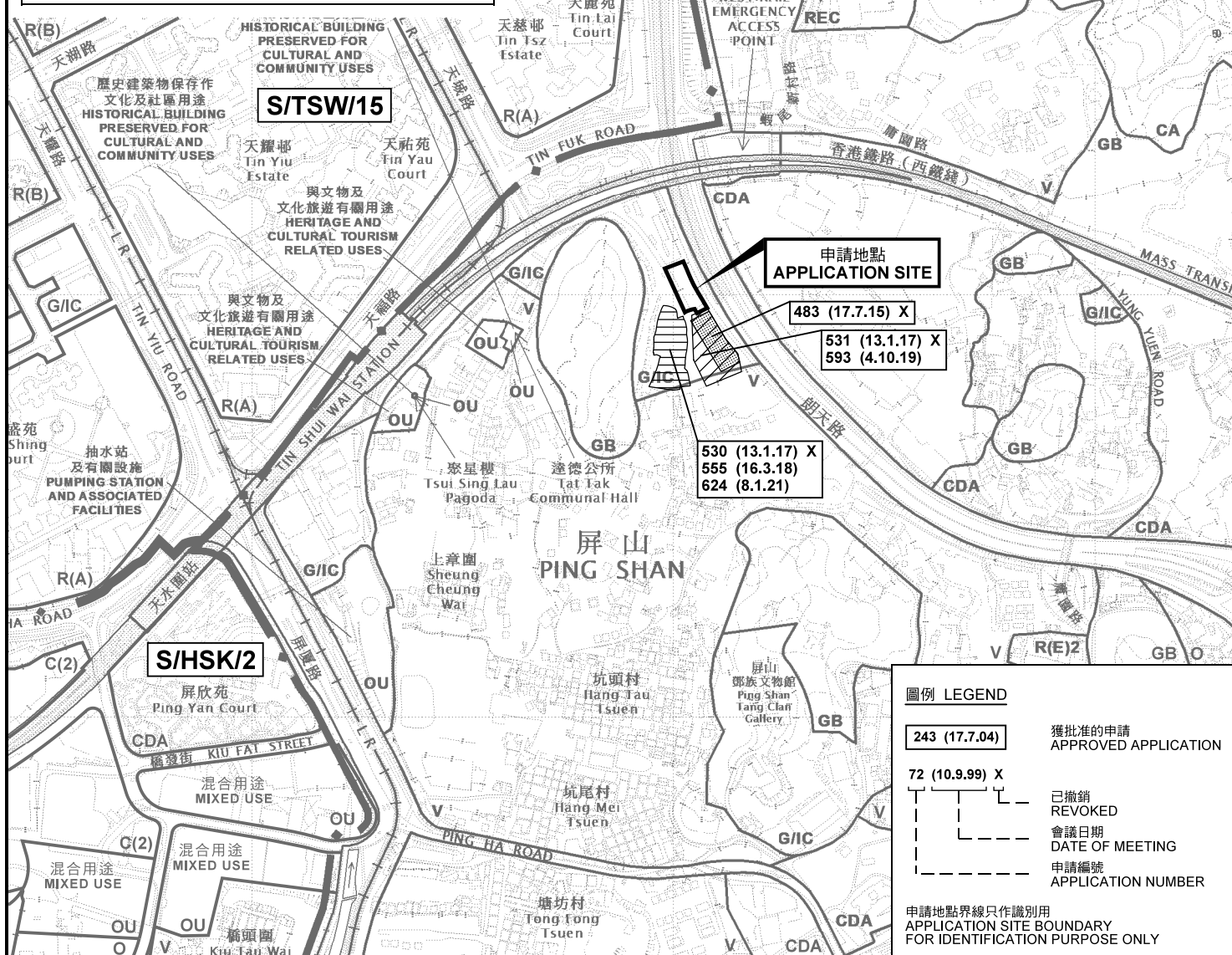
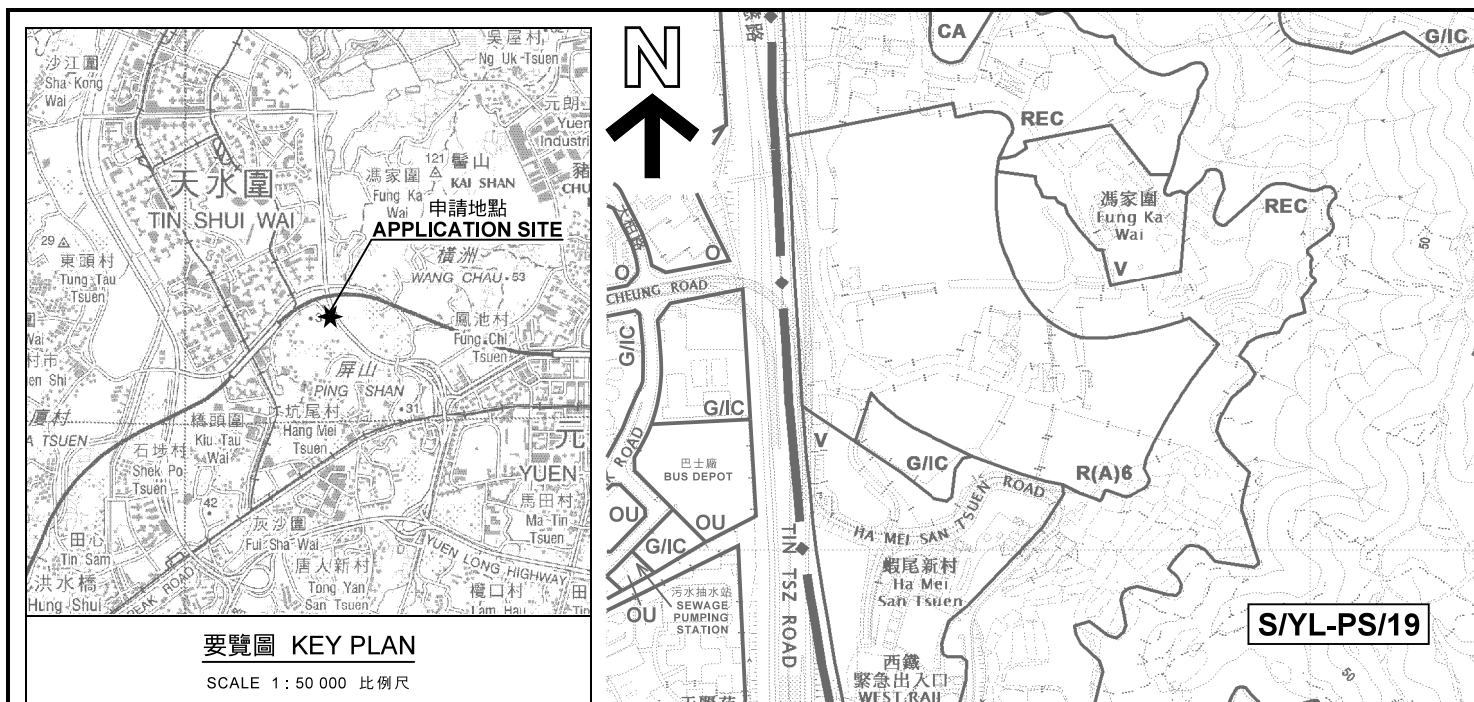


<p>Project 項目名稱:</p> <p>Proposed Temporary Shop & Services (Retail Shop for Selling Construction Material) and Wholesale of Construction Material for a Period of 3 Years at Lot 255 RP (Part) in D.D. 122, Ping Shan, Yuen Long, N.T.</p>	<p>Drawing Title 圖目:</p> <p>As-built Drainage Plan</p> <p>Drawing No. 圖號:</p> <p>Figure 5</p>	<p>Remarks 備註:</p> <p>+^{8.3} Level (in mPD)</p> <p>≡ Flow of surface runoff</p> <p>□ Existing catchpit</p> <p>Scale 比例:</p> <p>1:1000</p>
--	---	--

(摘錄自申請人於 3. 6. 2021 呈交的申請書)
(Extract from Applicant's Submission of 3.6.2021)

參考編號
REFERENCE No.
AYL-PS/639

繪圖 DRAWING
A-4



本摘要圖於2021年7月8日擬備，
所根據的資料為於2021年5月7日
展示的分區計劃大綱圖編號 S/YL-PS/19
EXTRACT PLAN PREPARED ON 8.7.2021
BASED ON OUTLINE ZONING PLAN No.
S/YL-PS/19 EXHIBITED ON 7.5.2021

位置圖及同類申請 LOCATION PLAN WITH SIMILAR APPLICATIONS

臨時商店及服務行業及建築材料批發(為期3年)
新界元朗屏山丈量約份第122約地段第255號餘段(部分)
TEMPORARY SHOP AND SERVICES
AND WHOLESALE OF CONSTRUCTION MATERIALS
FOR A PERIOD OF 3 YEARS
LOT 255 RP (PART) IN D.D.122,
PING SHAN, YUEN LONG, NEW TERRITORIES

SCALE 1: 7 500 比例尺

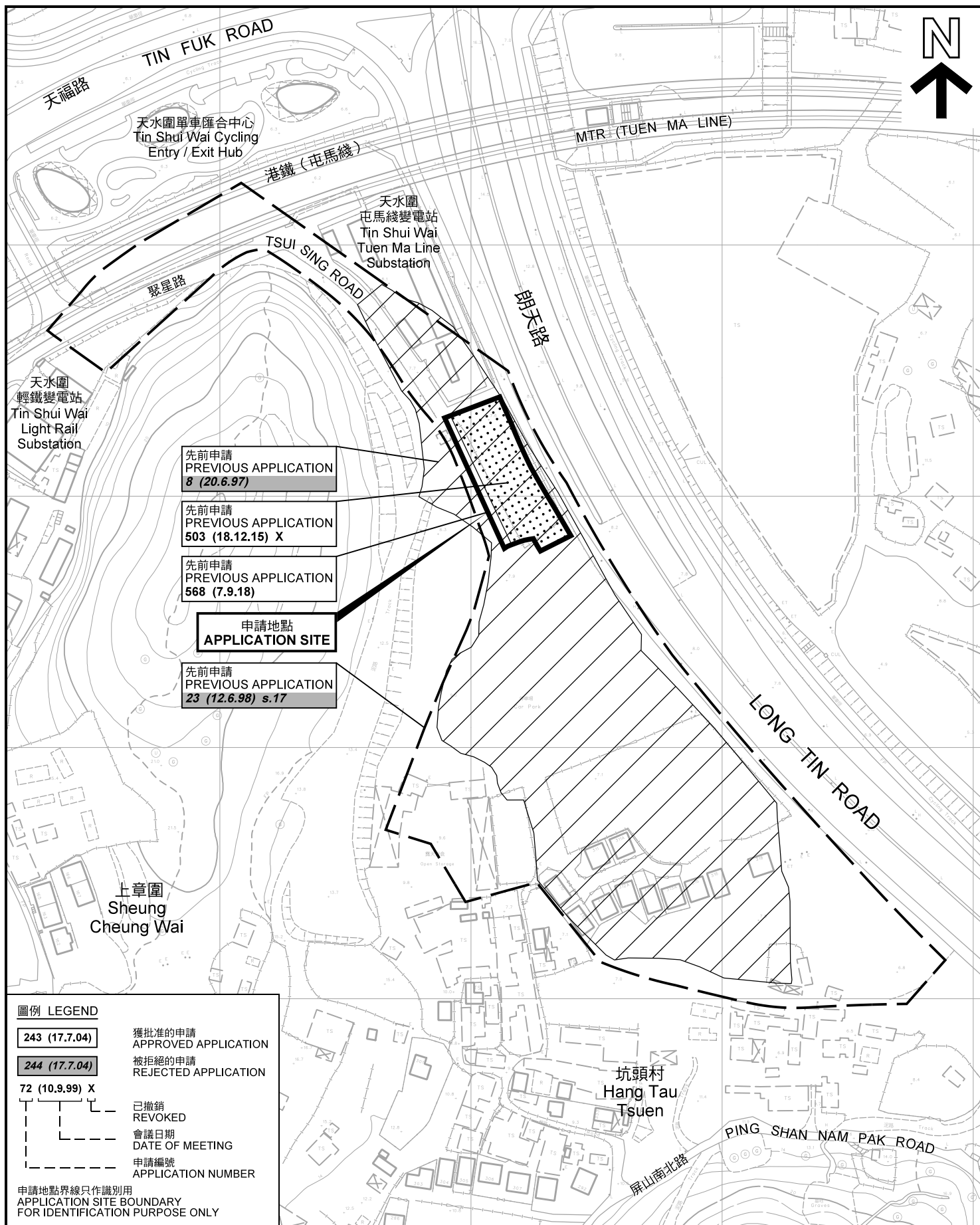
米 100 0 100 200 300 米
METRES

規劃署
PLANNING
DEPARTMENT



參考編號
REFERENCE No.
A/YL-PS/639

圖 PLAN
A-1a



先前申請圖 PREVIOUS APPLICATIONS PLAN

臨時商店及服務行業及建築材料批發(為期3年)
新界元朗屏山丈量約份第122約地段第255號餘段(部分)
TEMPORARY SHOP AND SERVICES
AND WHOLESALE OF CONSTRUCTION MATERIALS
FOR A PERIOD OF 3 YEARS
LOT 255 RP (PART) IN D.D.122,
PING SHAN, YUEN LONG, NEW TERRITORIES

SCALE 1:2 000 比例尺
米 METRES 20 0 20 40 60 80 100 米 METRES

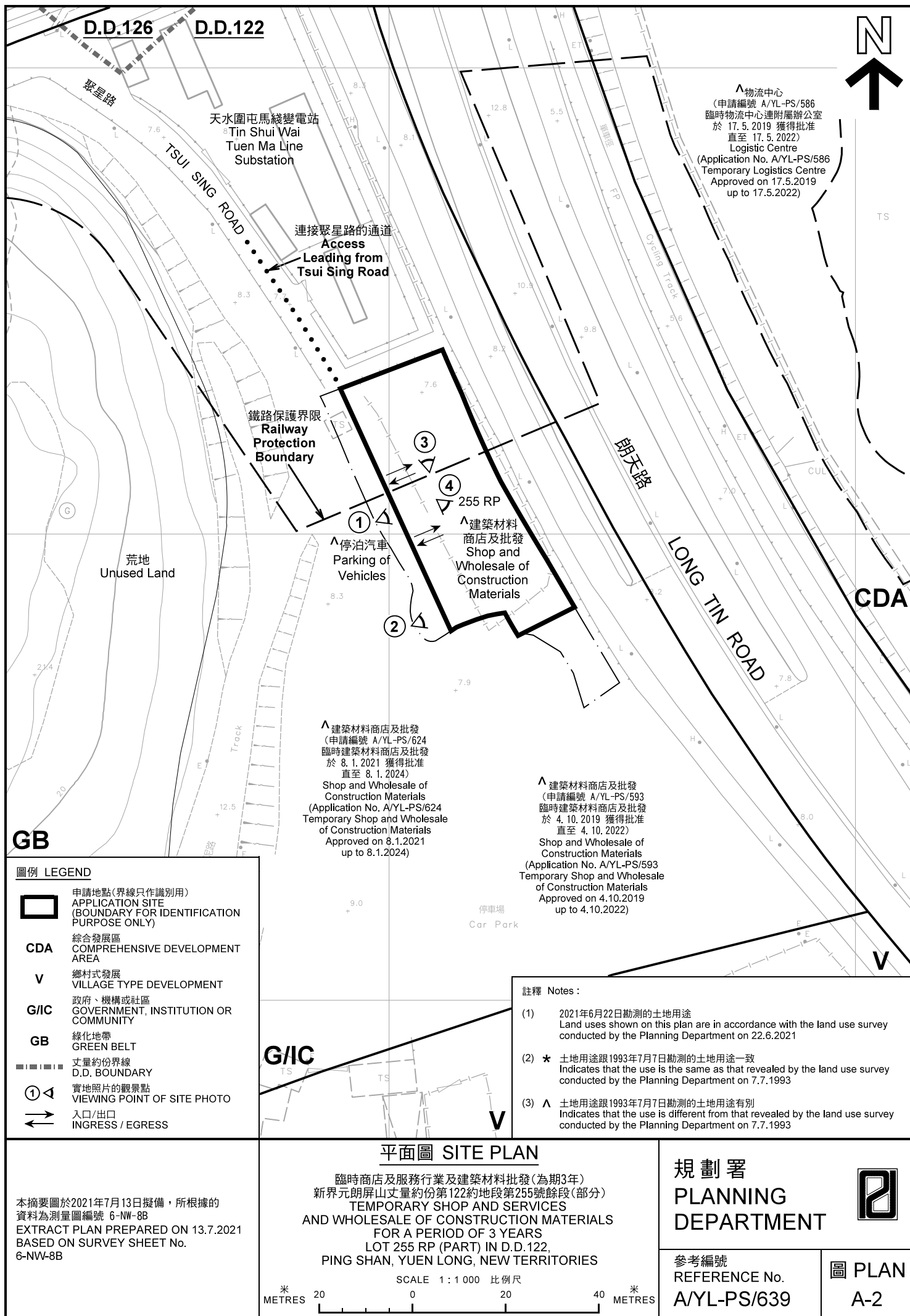
規劃署
PLANNING
DEPARTMENT



參考編號
REFERENCE No.
A/YL-PS/639

圖 PLAN
A-1b

本摘要圖於2021年7月14日擬備，所根據的
資料為測量圖編號 6-NW-8B
EXTRACT PLAN PREPARED ON 14.7.2021
BASED ON SURVEY SHEET No.
6-NW-8B





圖例 LEGEND



申請地點(界線只作識別用)
APPLICATION SITE
(BOUNDARY FOR IDENTIFICATION
PURPOSE ONLY)

本摘要圖於2021年7月14日擬備，所根據的資料為地政總署於2020年11月25日拍得的航攝照片編號 E106016C
EXTRACT PLAN PREPARED ON 14.7.2021
BASED ON AERIAL PHOTO No.
E106016C TAKEN ON 25.11.2020
BY LANDS DEPARTMENT

航攝照片 AERIAL PHOTO

臨時商店及服務行業及建築材料批發(為期3年)
新界元朗屏山丈量約份第122約地段第255號餘段(部分)
TEMPORARY SHOP AND SERVICES
AND WHOLESALE OF CONSTRUCTION MATERIALS
FOR A PERIOD OF 3 YEARS
LOT 255 RP (PART) IN D.D. 122,
PING SHAN, YUEN LONG, NEW TERRITORIES

規劃署
PLANNING
DEPARTMENT



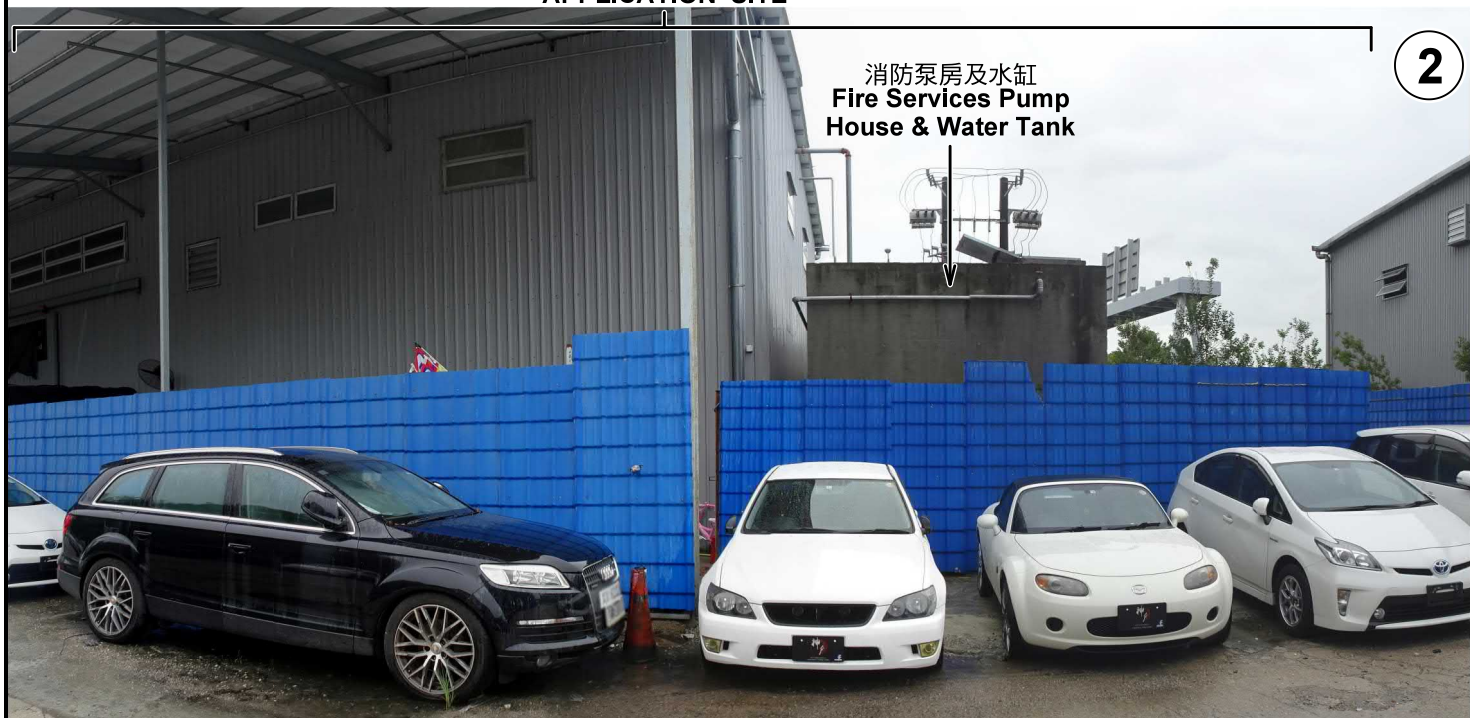
參考編號
REFERENCE No.
A/YL-PS/639

圖 PLAN
A-3

申請地點
APPLICATION SITE



申請地點
APPLICATION SITE



實地照片 SITE PHOTOS

臨時商店及服務行業及建築材料批發(為期3年)
新界元朗屏山丈量約份第122約地段第255號餘段(部分)
TEMPORARY SHOP AND SERVICES
AND WHOLESALE OF CONSTRUCTION MATERIALS
FOR A PERIOD OF 3 YEARS
LOT 255 RP (PART) IN D.D. 122,
PING SHAN, YUEN LONG, NEW TERRITORIES

規劃署
PLANNING
DEPARTMENT



參考編號
REFERENCE No.
A/YL-PS/639

圖 PLAN
A-4a

本圖於2021年7月9日擬備，所根據的資料為攝於2021年6月22日的實地照片
PLAN PREPARED ON 9.7.2021
BASED ON SITE PHOTOS
TAKEN ON 22.6.2021



本圖於2021年7月9日擬備，所根據的資料為攝於2021年6月22日的實地照片
PLAN PREPARED ON 9.7.2021
BASED ON SITE PHOTOS
TAKEN ON 22.6.2021

實地照片 SITE PHOTOS

臨時商店及服務行業及建築材料批發(為期3年)
新界元朗屏山丈量約份第122約地段第255號餘段(部分)
TEMPORARY SHOP AND SERVICES
AND WHOLESALE OF CONSTRUCTION MATERIALS
FOR A PERIOD OF 3 YEARS
LOT 255 RP (PART) IN D.D. 122,
PING SHAN, YUEN LONG, NEW TERRITORIES

規劃署
PLANNING
DEPARTMENT



參考編號
REFERENCE No.
A/YL-PS/639

圖 PLAN
A-4b