

Not to Scale	Location Plan Lots No. 63 (Part), 68 (Part), 69, 70 (Part), 71 (Part), 72 (Part) and 73 (Part) in D.D. 126, Ping Shan, Yuen Long, New Territories	Goldrich Planners & Surveyors Ltd.
April 2021		Plan 1 (P 20049)

(摘錄自申請人於 13. 12. 2021 呈交的申請書)
 (Extract from Applicant's
 Submission of 13.12.2021)

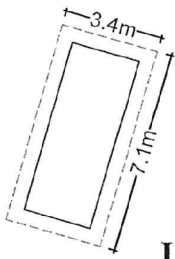
參考編號
 REFERENCE No.
 A/YL-PS/652

繪圖 DRAWING
 A-1



1

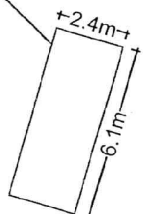
Floor Area: 15m²
Projection Area: 9m²
Covered Area: 24m²



(Not to scale)

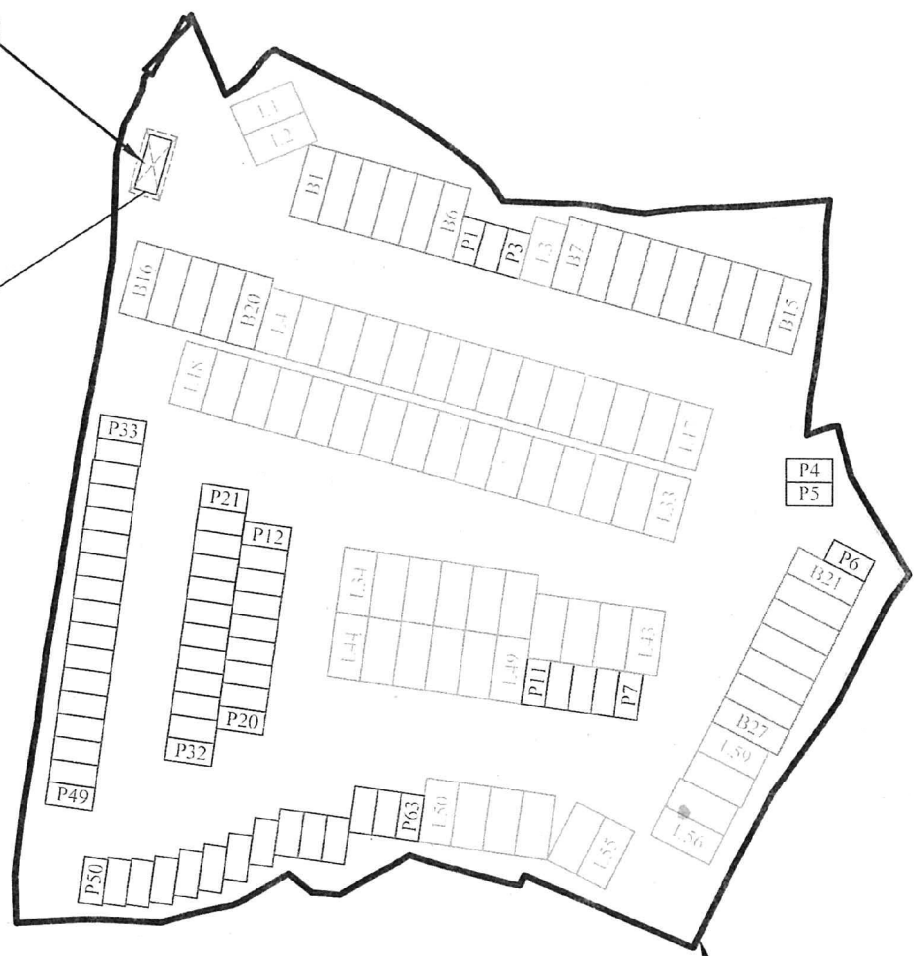
U/F

Floor Area: 15m²



(Not to scale)

G/F



Application Site

Legend

- P No. of Parking space for private car: 63 (42%)
(2.5m x 5m)
- L No. of Parking space for light goods vehicle: 59 (40%)
(3.5m x 7m)
- B No. of Parking space for light buses: 27 (18%)
(3m x 8m)

Total: 149 (100%) Site Area: about 6,621m²

No.	Structure / Use	Covered Area (about)	Floor Area (about)	Height	No. of Storeys
1	U/F: Ancillary Office G/F: Guard Room	24m ²	24m ² * 15m ²	6m	2
Total		<u>24m²</u>	<u>39m²</u>		

*Note: including 9m² projection area

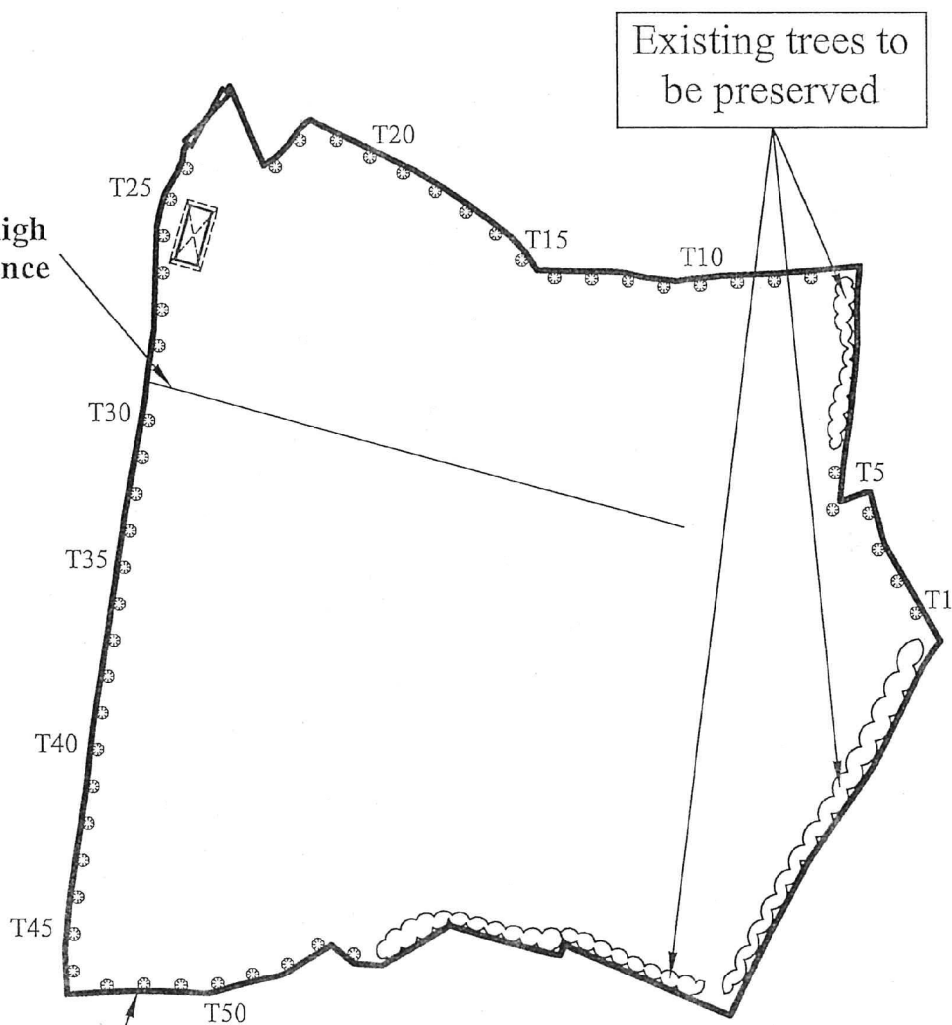
1-750 (A4)	Layout Plan	Goldrich Planners & Surveyors Ltd.
December 2021	Lots No. 63 (Part), 68 (Part), 69, 70 (Part), 71 (Part), 72 (Part) and 73 (Part) in D.D. 126, Ping Shan, Yuen Long, New Territories	Plan 3 (P 20049)

(摘錄自申請人於 13. 12. 2021 呈交的申請書)
(Extract from Applicant's
Submission of 13.12.2021)

參考編號 REFERENCE No. AYL-PS/652	繪圖 DRAWING A-2
--	---------------------------------



About 1m high level difference



Application Site

	Spacing (Centre to Centre)	Min. Size (Height)	Quantity
⊗ Proposed Melaleuca leucadendron (白千層)	4m	2.75	54
1:750	Tree Preservation and Landscape Proposal Lots No. 63 (Part), 68 (Part), 69, 70 (Part), 71 (Part), 72 (Part) and 73 (Part) in D.D. 126, Ping Shan, Yuen Long, New Territories		Goldrich Planners & Surveyors Ltd.
April 2021			Plan 4 (P 20049)

(摘錄自申請人於 13. 12. 2021 呈交的申請書)
(Extract from Applicant's Submission of 13.12.2021)

參考編號
REFERENCE No.
AYL-PS/652

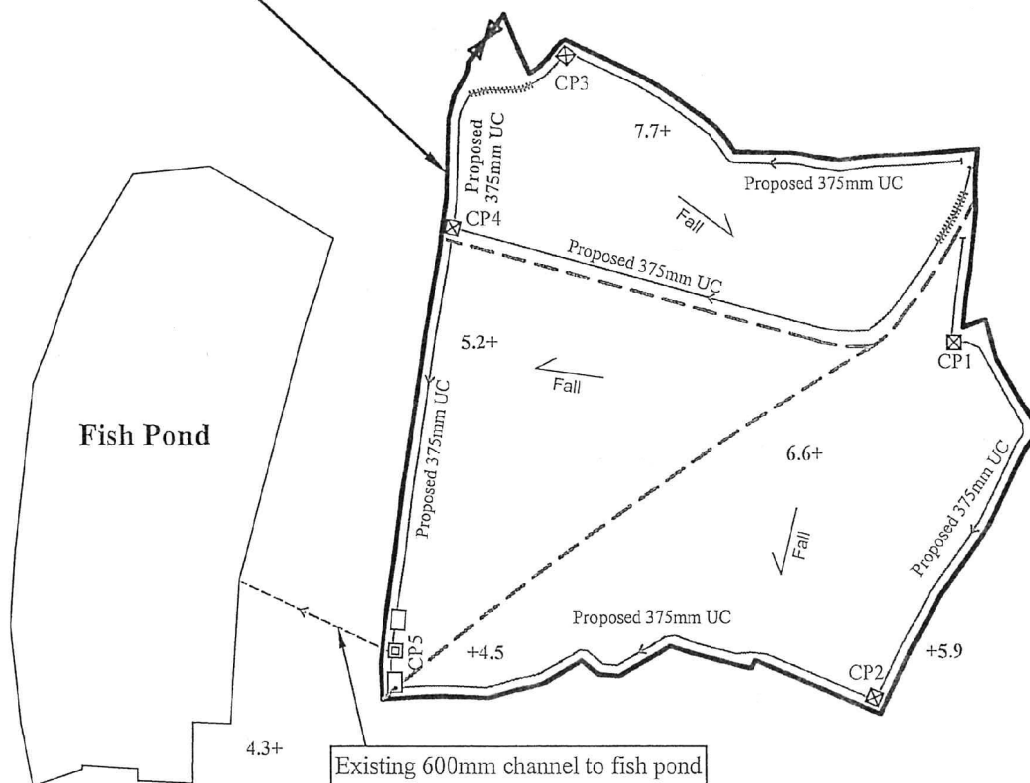
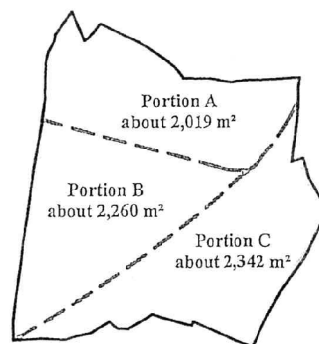
繪圖 DRAWING
A-3



Application Site

6.5 +

Key Plan



Note:

- 1) According to Technical Note to prepare a Drainage Submission by Drainage Services Department of November 2001(p.6), 375mm is acceptable for area < 2,400m² (i.e. Portions A, B and C)

LEGEND

- ☒ Proposed catch pit
- ☐ Proposed last catch pit
- Proposed grease traps
- Proposed 600mm U-channel
- ++++- Proposed U-channel with C. I. cover

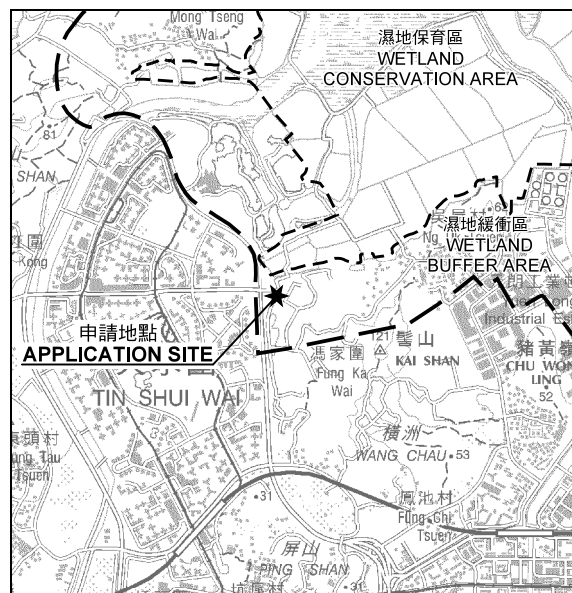
Site Area: about 6,621m²

1:1000 (A4)	Drainage Proposal	Goldrich Planners & Surveyors Ltd.
November 2021	Lots No. 63 (Part), 68 (Part), 69, 70 (Part), 71 (Part), 72 (Part) and 73 (Part) in D.D. 126, Ping Shan, Yuen Long, New Territories	Plan 5.1 (P 20049)

(摘錄自申請人於 13. 12. 2021 呈交的申請書)
(Extract from Applicant's
Submission of 13.12.2021)

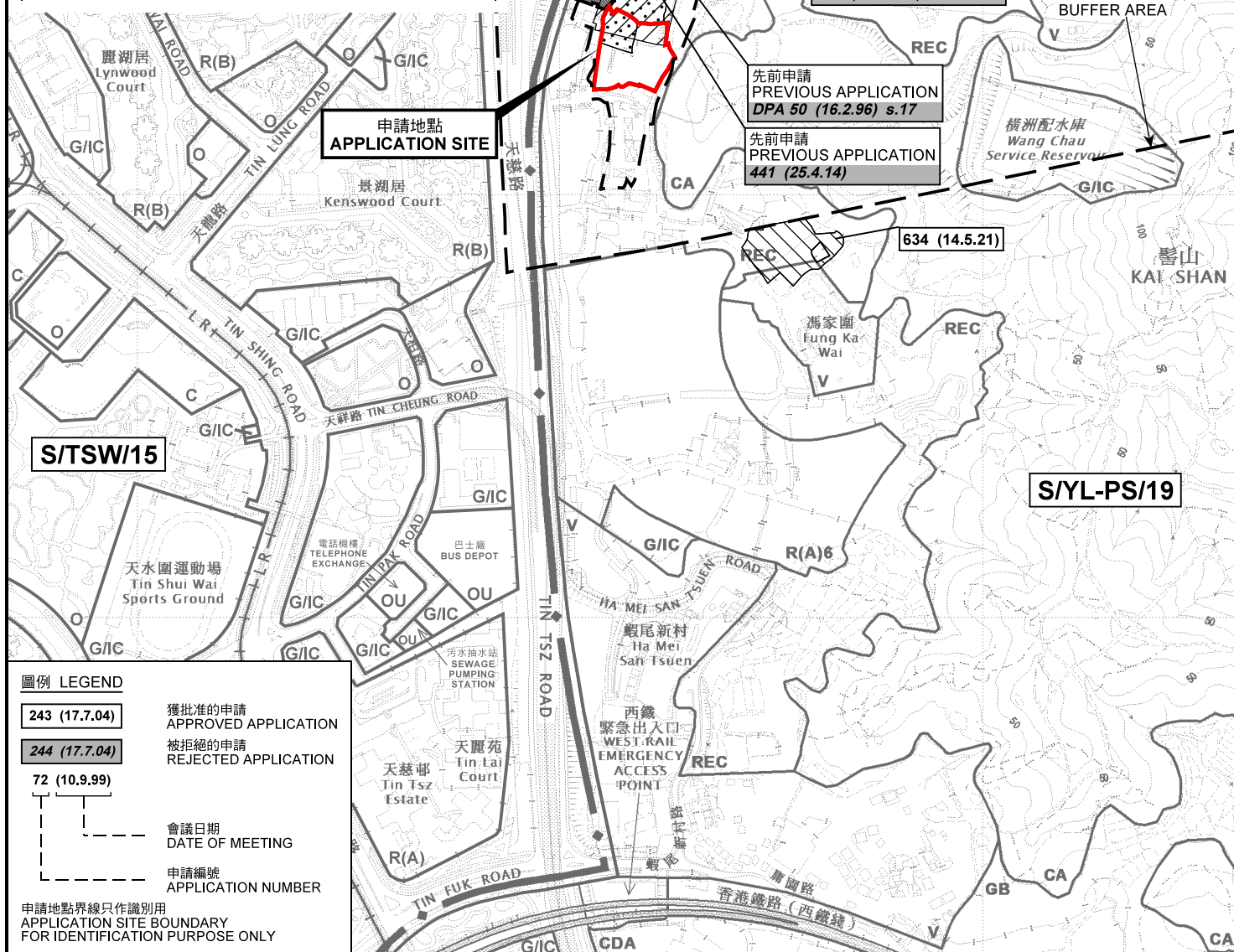
參考編號
REFERENCE No.
AYL-PS/652

繪圖 DRAWING
A-4



要覽圖 KEY PLAN

SCALE 1: 50 000 比例尺



圖例 LEGEND

- 243 (17.7.04) 獲批准的申請 APPROVED APPLICATION
- 244 (17.7.04) 被拒絕的申請 REJECTED APPLICATION
- 72 (10.9.99)
- 會議日期 DATE OF MEETING
- 申請編號 APPLICATION NUMBER

申請地點界線只作識別用
APPLICATION SITE BOUNDARY
FOR IDENTIFICATION PURPOSE ONLY

位置圖 LOCATION PLAN

擬議臨時公眾停車場(私家車、輕型貨車及小巴)
及附屬設施(為期3年)及填土

新界元朗屏山丈量約份第126約地段第63號(部分)、第68號(部分)、
第69號、第70號(部分)、第71號(部分)、第72號(部分)及第73號(部分)

PROPOSED TEMPORARY PUBLIC VEHICLE PARK

(PRIVATE CARS, LIGHT GOODS VEHICLES AND LIGHT BUSES) WITH
ANCILLARY FACILITIES FOR A PERIOD OF 3 YEARS AND FILLING OF LAND
LOTS 63(PART), 68(PART), 69, 70(PART), 71(PART), 72(PART) AND 73(PART)
IN D.D.126, PING SHAN, YUEN LONG, NEW TERRITORIES

SCALE 1: 7 500 比例尺

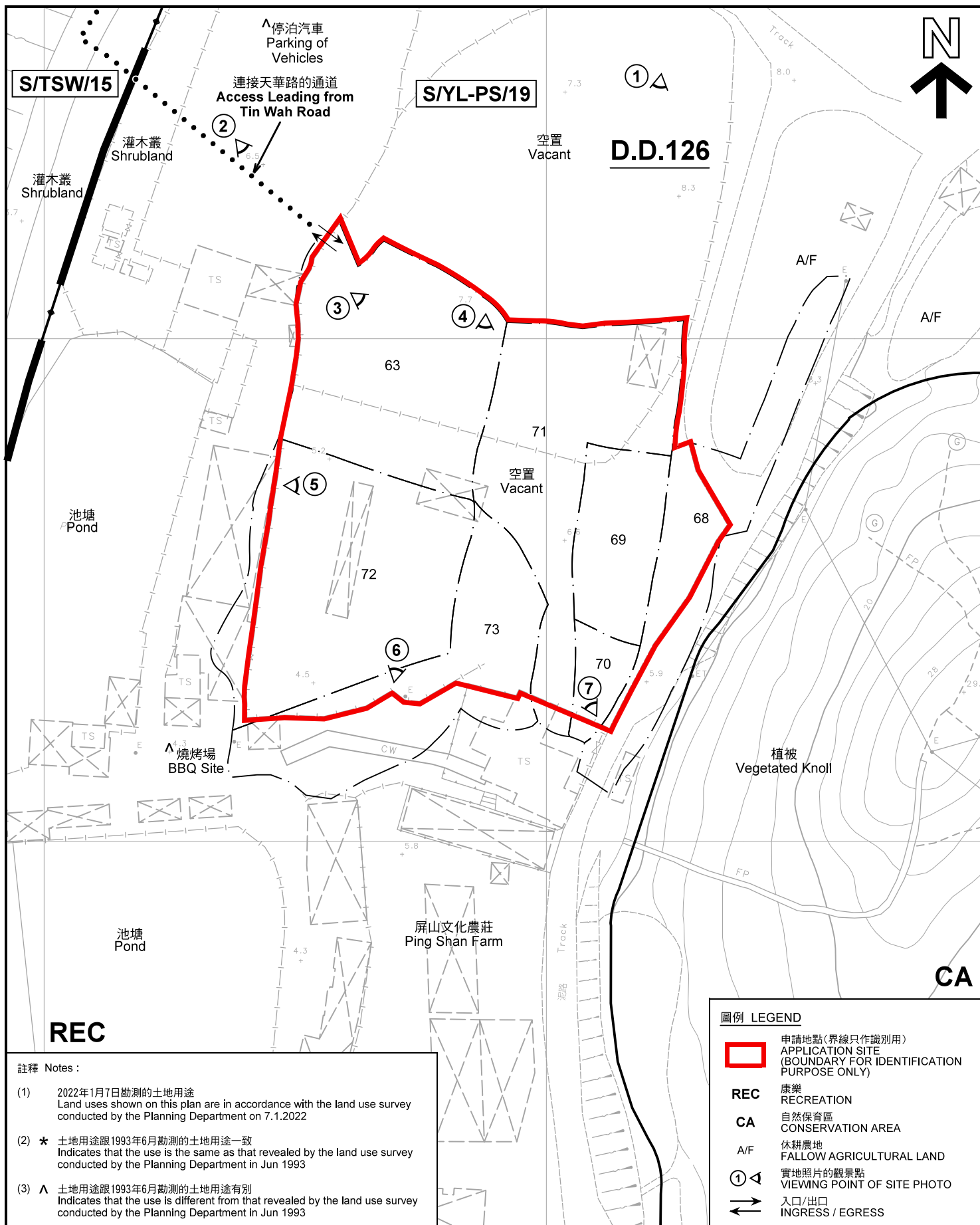
米 100 0 100 200 300 米
METRES

規劃署
PLANNING
DEPARTMENT



參考編號
REFERENCE No.
A/YL-PS/652

圖 PLAN
A-1



註釋 Notes:

- (1) 2022年1月7日勘測的土地用途
Land uses shown on this plan are in accordance with the land use survey conducted by the Planning Department on 7.1.2022
- (2) * 土地用途跟1993年6月勘測的土地用途一致
Indicates that the use is the same as that revealed by the land use survey conducted by the Planning Department in Jun 1993
- (3) ^ 土地用途跟1993年6月勘測的土地用途有別
Indicates that the use is different from that revealed by the land use survey conducted by the Planning Department in Jun 1993

平面圖 SITE PLAN

擬議臨時公眾停車場(私家車、輕型貨車及小巴)
及附屬設施(為期3年)及填土

新界元朗屏山丈量約份第126約地段第63號(部分)、第68號(部分)、
第69號、第70號(部分)、第71號(部分)、第72號(部分)及第73號(部分)

PROPOSED TEMPORARY PUBLIC VEHICLE PARK

(PRIVATE CARS, LIGHT GOODS VEHICLES AND LIGHT BUSES) WITH
ANCILLARY FACILITIES FOR A PERIOD OF 3 YEARS AND FILLING OF LAND
LOTS 63(PART), 68(PART), 69, 70(PART), 71(PART), 72(PART) AND 73(PART)
IN D.D.126, PING SHAN, YUEN LONG, NEW TERRITORIES

SCALE 1 : 1 000 比例尺

米 20 0 20 40 米
METRES

本摘要圖於2022年1月13日擬備, 所根據的
資料為測量圖編號6-NW-3B
EXTRACT PLAN PREPARED ON 13.1.2022
BASED ON SURVEY SHEET No. 6-NW-3B

圖例 LEGEND

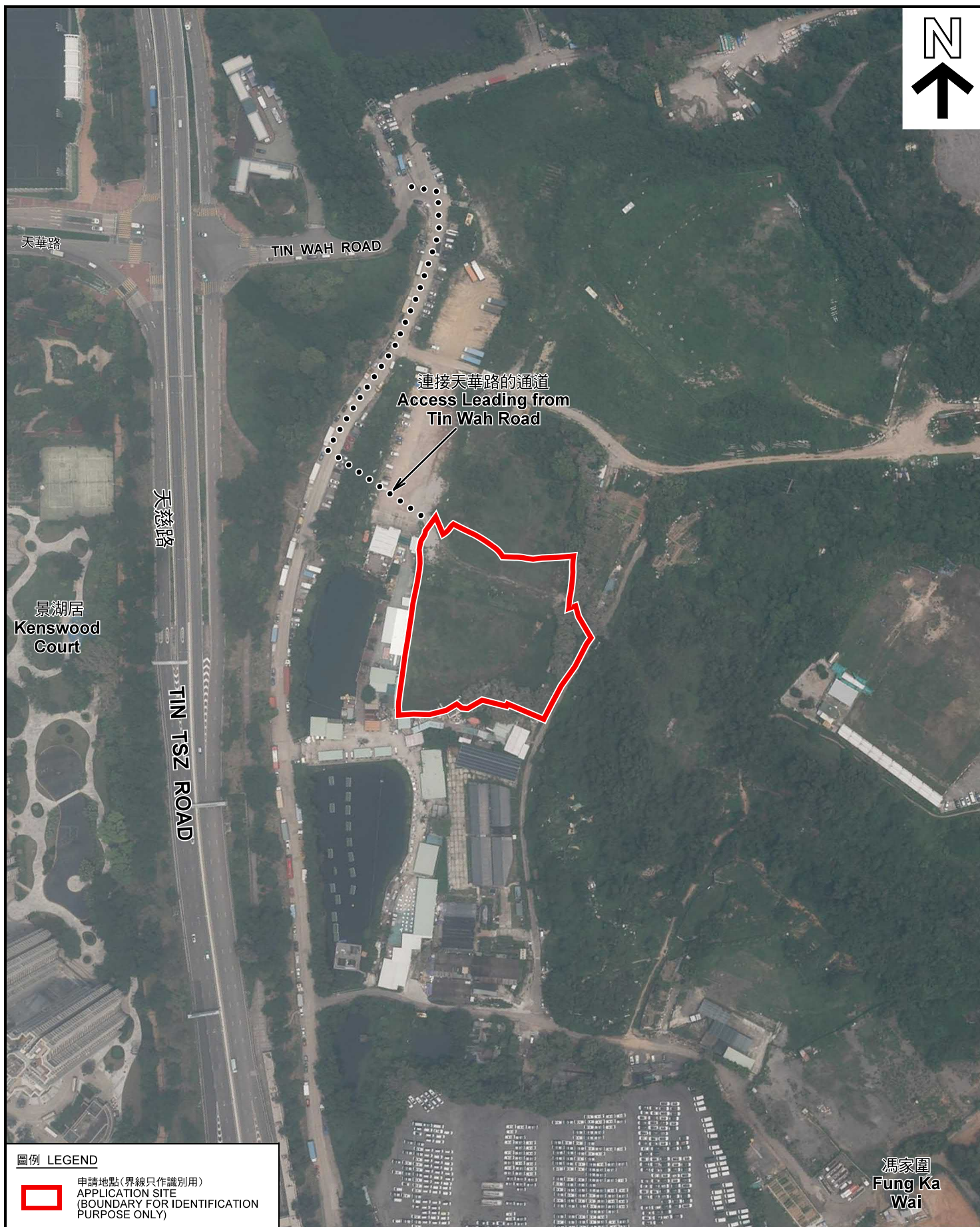
- 申請地點(界線只作識別用)
APPLICATION SITE
(BOUNDARY FOR IDENTIFICATION
PURPOSE ONLY)
- REC 康樂
RECREATION
- CA 自然保育區
CONSERVATION AREA
- A/F 休耕農地
FALLOW AGRICULTURAL LAND
- 實地照片的觀景點
VIEWING POINT OF SITE PHOTO
- 入口/出口
INGRESS / EGRESS

規劃署
PLANNING
DEPARTMENT



參考編號
REFERENCE No.
A/YL-PS/652

圖 PLAN
A-2



圖例 LEGEND



申請地點(界線只作識別用)
APPLICATION SITE
(BOUNDARY FOR IDENTIFICATION
PURPOSE ONLY)

本摘要圖於2022年1月12日擬備，所根據的資料為地政總署於2021年7月24日拍得的航攝照片編號 E140294C
EXTRACT PLAN PREPARED ON 12.1.2022
BASED ON AERIAL PHOTO No.
E140294C TAKEN ON 24.7.2021
BY LANDS DEPARTMENT

航攝照片 AERIAL PHOTO

擬議臨時公眾停車場(私家車、輕型貨車及小巴)
及附屬設施(為期3年)及填土

新界元朗屏山丈量約份第126約地段第63號(部分)、第68號(部分)、
第69號、第70號(部分)、第71號(部分)、第72號(部分)及第73號(部分)

PROPOSED TEMPORARY PUBLIC VEHICLE PARK
(PRIVATE CARS, LIGHT GOODS VEHICLES AND LIGHT BUSES) WITH
ANCILLARY FACILITIES FOR A PERIOD OF 3 YEARS AND FILLING OF LAND
LOTS 63(PART), 68(PART), 69, 70(PART), 71(PART), 72(PART) AND 73(PART)
IN D.D.126, PING SHAN, YUEN LONG, NEW TERRITORIES

規劃署
PLANNING
DEPARTMENT



參考編號
REFERENCE No.
A/YL-PS/652

圖 PLAN
A-3

1



2



申請地點界線只作識別用 APPLICATION SITE BOUNDARY FOR IDENTIFICATION PURPOSE ONLY

實地照片 SITE PHOTOS

擬議臨時公眾停車場(私家車、輕型貨車及小巴)
及附屬設施(為期3年)及填土

新界元朗屏山丈量約份第126約地段第63號(部分)、第68號(部分)、
第69號、第70號(部分)、第71號(部分)、第72號(部分)及第73號(部分)

PROPOSED TEMPORARY PUBLIC VEHICLE PARK

(PRIVATE CARS, LIGHT GOODS VEHICLES AND LIGHT BUSES) WITH
ANCILLARY FACILITIES FOR A PERIOD OF 3 YEARS AND FILLING OF LAND
LOTS 63(PART), 68(PART), 69, 70(PART), 71(PART), 72(PART) AND 73(PART)
IN D.D.126, PING SHAN, YUEN LONG, NEW TERRITORIES

本圖於2022年1月12日擬備，所根據的
資料為攝於2022年1月7日的實地照片
PLAN PREPARED ON 12.1.2022
BASED ON SITE PHOTOS
TAKEN ON 7.1.2022

規劃署
PLANNING
DEPARTMENT



參考編號
REFERENCE No.
A/YL-PS/652

圖 PLAN
A-4a



<p>本圖於2022年1月12日擬備，所根據的資料為攝於2022年1月7日的實地照片 PLAN PREPARED ON 12.1.2022 BASED ON SITE PHOTOS TAKEN ON 7.1.2022</p>	<p style="text-align: center;">實地照片 SITE PHOTOS</p> <p style="text-align: center;">擬議臨時公眾停車場(私家車、輕型貨車及小巴) 及附屬設施(為期3年)及填土 新界元朗屏山丈量約份第126約地段第63號(部分)、第68號(部分)、 第69號、第70號(部分)、第71號(部分)、第72號(部分)及第73號(部分) PROPOSED TEMPORARY PUBLIC VEHICLE PARK (PRIVATE CARS, LIGHT GOODS VEHICLES AND LIGHT BUSES) WITH ANCILLARY FACILITIES FOR A PERIOD OF 3 YEARS AND FILLING OF LAND LOTS 63(PART), 68(PART), 69, 70(PART), 71(PART), 72(PART) AND 73(PART) IN D.D.126, PING SHAN, YUEN LONG, NEW TERRITORIES</p>	<div> <div> <p>規 劃 署 PLANNING DEPARTMENT</p> </div> <div>  </div> </div> <div> <div> <p>參考編號 REFERENCE No. A/YL-PS/652</p> </div> <div> <p>圖 PLAN A-4b</p> </div> </div>
---	---	--