

Project 項目名稱: Temporary Shop & Services and Wholesale of Construction Material for a Period of 3 Years at Lots 256 (Part), 258 RP (Part) & 259 in D.D. 122, Ping Shan, Yuen Long, N.T.	Drawing Title 圖目: Proposed Layout Plan	Remarks 備註:
	Drawing No. 圖號: Figure 3	

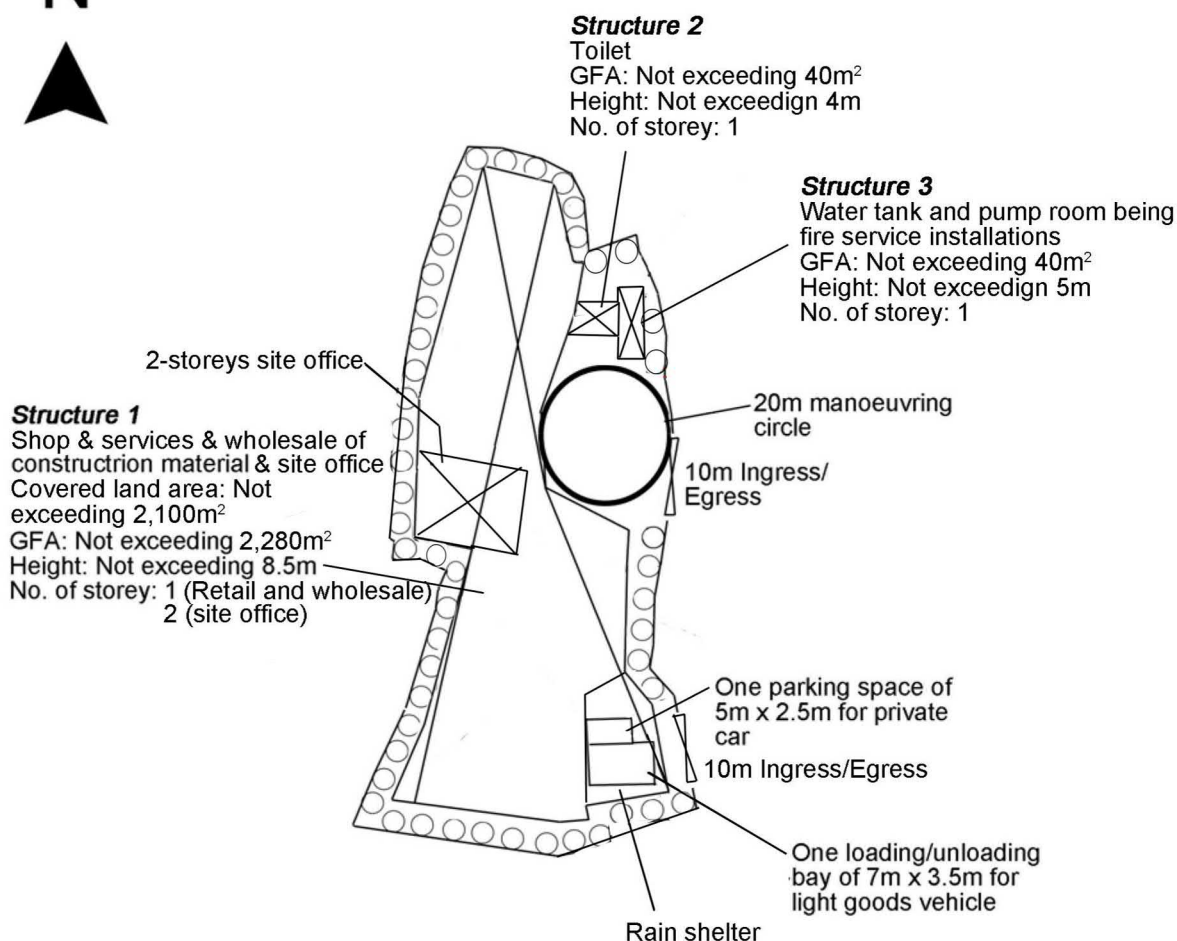
Scale 比例:
1:1000

(摘錄自申請人於 12.4.2024 呈交的申請書)
(Extract from Applicant's Submission of 12.4.2024)

參考編號
REFERENCE No.
A/YL-PS/713

繪圖 DRAWING
A-2

Tree	Approximate Height	Spacing
○ Existing <i>Bauhinia blakeana</i> to be preserved	2.75m	4m



Project 項目名稱:

Temporary Shop & Services and Wholesale of Construction Material for a Period of 3 Years at Lots 256 (Part), 258 RP (Part) & 259 in D.D. 122, Ping Shan, Yuen Long, N.T.

Drawing Title 圖目:

Proposed Landscape Plan

Drawing No. 圖號:

Figure 4

Remarks 備註:

Tree Preservation Measures:

- (i) No open storage of materials/objects will be carried out within the 1m diameter of all the trees within the site boundary;
- (ii) Irrigate the trees at regular interval;
- (iii) Replace dead tree, if any; &
- (iv) Removal of weeds and climbers adjacent to the existing trees.

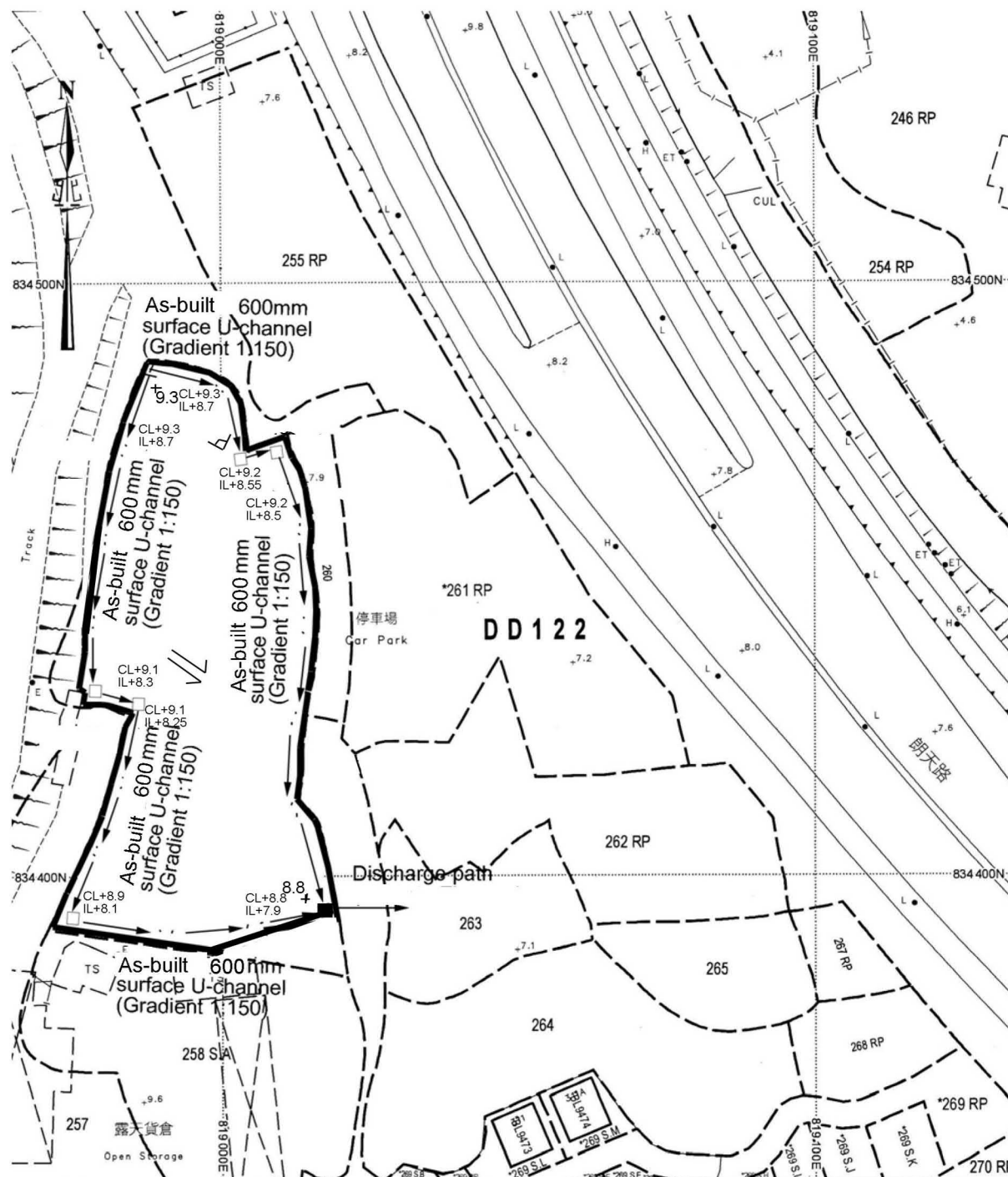
Scale 比例:

1:1000

(摘錄自申請人於 12.4.2024 呈交的申請書)
(Extract from Applicant's
Submission of 12.4.2024)

參考編號
REFERENCE No.
A/YL-PS/713

繪圖 DRAWING
A-3



Project 項目名稱:

Temporary Shop & Services and Wholesale of Construction Material for a Period of 3 Years at Lots 256 (Part), 258 RP (Part) & 259 in D.D. 122, Ping Shan, Yuen Long, N.T.

Drawing Title 圖目:

As-built Drainage Plan

Drawing No. 圖號:

Figure 5

Remarks 備註:

+9.3 Level (in mPD)

⇐ Flow of surface runoff

□ Existing catchpit

■ Existing catchpit with sand trap

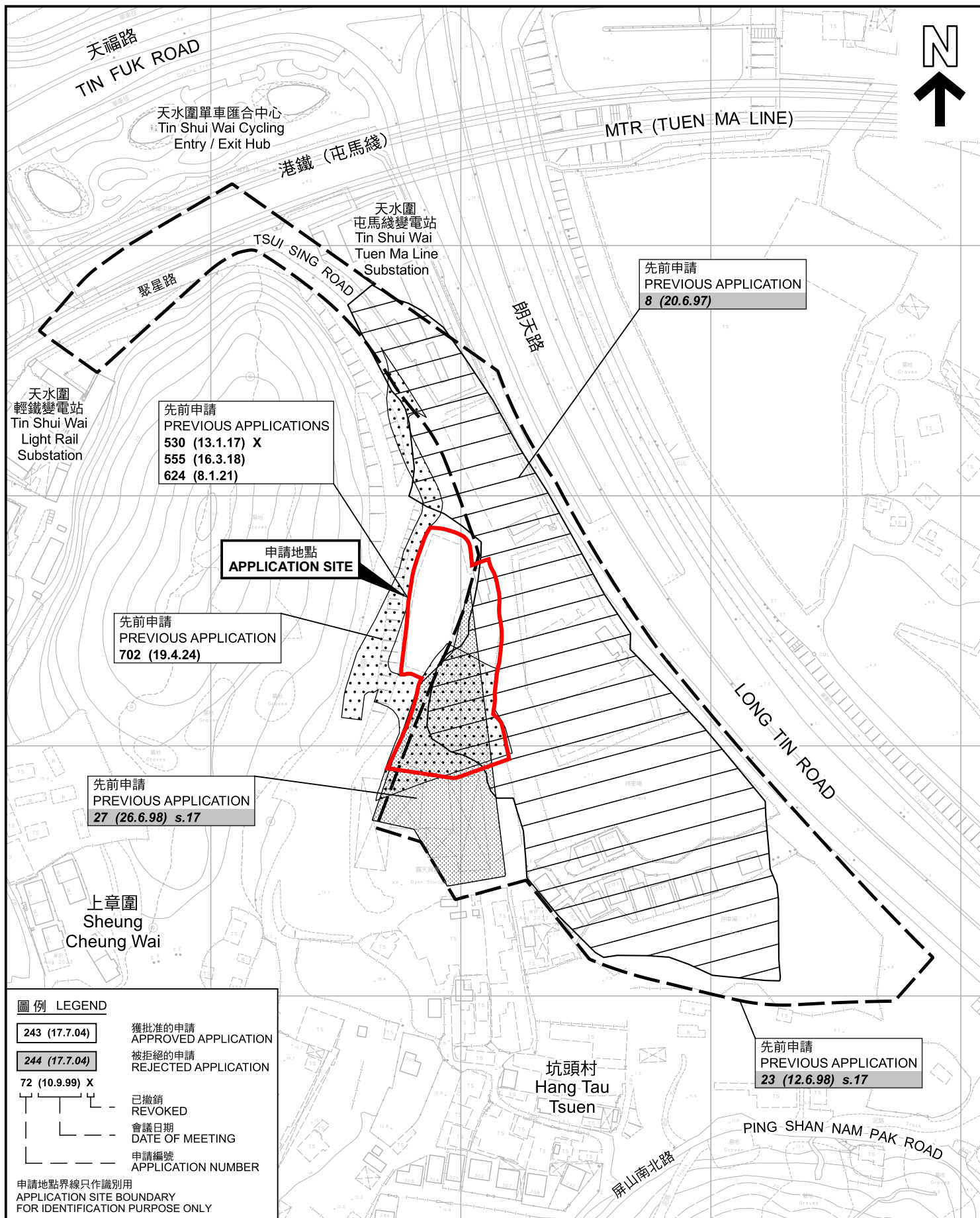
Scale 比例:

1:1000

(摘錄自申請人於 12.4.2024 呈交的申請書)
(Extract from Applicant's
Submission of 12.4.2024)

參考編號
REFERENCE No.
A/YL-PS/713

繪圖 DRAWING
A-4



先前申請圖 PREVIOUS APPLICATIONS PLAN

臨時商店及服務業及建築材料批發(為期3年)
新界元朗屏山丈量約份第122約
地段第256號(部分)、258號餘段(部分)及第259號
TEMPORARY SHOP AND SERVICES AND WHOLESALE OF
CONSTRUCTION MATERIALS FOR A PERIOD OF 3 YEARS
LOTS 256 (PART), 258 RP (PART) AND 259 IN D.D.122,
PING SHAN, YUEN LONG, NEW TERRITORIES

SCALE 1 : 2 000 比例尺

米 40 0 40 80 米
METRES METRES

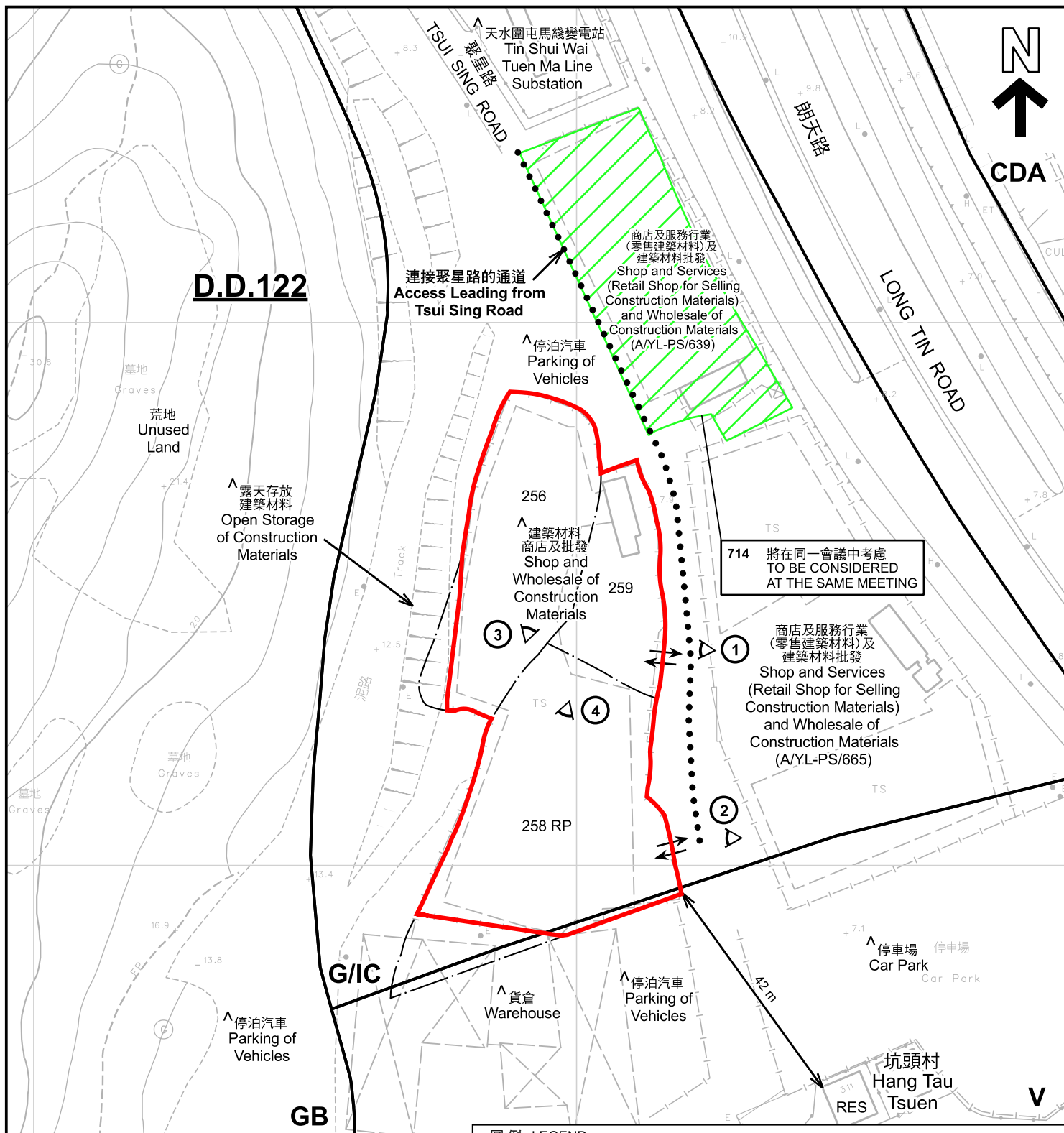
規 劃 署
PLANNING
DEPARTMENT



參考編號
REFERENCE No.
A/YL-PS/713

圖 PLAN
A-1b

本摘要圖於2024年5月28日擬備，所根據的
資料為測量圖編號 6-NW-8B
EXTRACT PLAN PREPARED ON 28.5.2024
BASED ON SURVEY SHEET No.
6-NW-8B



註釋 Notes:

- (1) 2024年4月19日勘測的土地用途
Land uses shown on this plan are in accordance with the land use survey conducted by the Planning Department on 19.4.2024
- (2) * 土地用途跟1993年6月22日及1993年7月7日勘測的土地用途一致
Indicates that the use is the same as that revealed by the land use survey conducted by the Planning Department on 22.6.1993 & 7.7.1993
- (3) ^ 土地用途跟1993年6月22日及1993年7月7日勘測的土地用途有別
Indicates that the use is different from that revealed by the land use survey conducted by the Planning Department on 22.6.1993 & 7.7.1993

圖例 LEGEND

- | | | | |
|-------------|---|------------|---|
| | 申請地點 (界線只作識別用)
APPLICATION SITE (BOUNDARY FOR IDENTIFICATION PURPOSE ONLY) | GB | 綠化地帶
GREEN BELT |
| CDA | 綜合發展區
COMPREHENSIVE DEVELOPMENT AREA | RES | 住用構築物
RESIDENTIAL STRUCTURES |
| V | 鄉村式發展
VILLAGE TYPE DEVELOPMENT | ① | 實地照片的觀景點
VIEWING POINT OF SITE PHOTO |
| G/IC | 政府、機構或社區
GOVERNMENT, INSTITUTION OR COMMUNITY | ↔ | 入口/出口
INGRESS / EGRESS |

平面圖 SITE PLAN

臨時商店及服務業及建築材料批發(為期3年)
新界元朗屏山丈量約份第122約
地段第256號(部分)、258號餘段(部分)及第259號
TEMPORARY SHOP AND SERVICES AND WHOLESALE OF
CONSTRUCTION MATERIALS FOR A PERIOD OF 3 YEARS
LOTS 256 (PART), 258 RP (PART) AND 259 IN D.D.122,
PING SHAN, YUEN LONG, NEW TERRITORIES

SCALE 1:1 000 比例尺

米 20 0 20 40 米
METRES

規劃署
PLANNING
DEPARTMENT



參考編號
REFERENCE No.
A/YL-PS/713

圖 PLAN
A-2

本摘要圖於2024年5月28日擬備，所根據的
資料為測量圖編號 6-NW-8B
EXTRACT PLAN PREPARED ON 28.5.2024
BASED ON SURVEY SHEET No.
6-NW-8B



圖例 LEGEND



申請地點(界線只作識別用)
APPLICATION SITE
(BOUNDARY FOR IDENTIFICATION
PURPOSE ONLY)

本摘要圖於2024年5月3日擬備，所根據的資料為地政總署於2023年2月24日拍得的航攝照片編號 E187390C
EXTRACT PLAN PREPARED ON 3.5.2024
BASED ON AERIAL PHOTO No.
E187390C TAKEN ON 24.2.2023
BY LANDS DEPARTMENT

航攝照片 AERIAL PHOTO

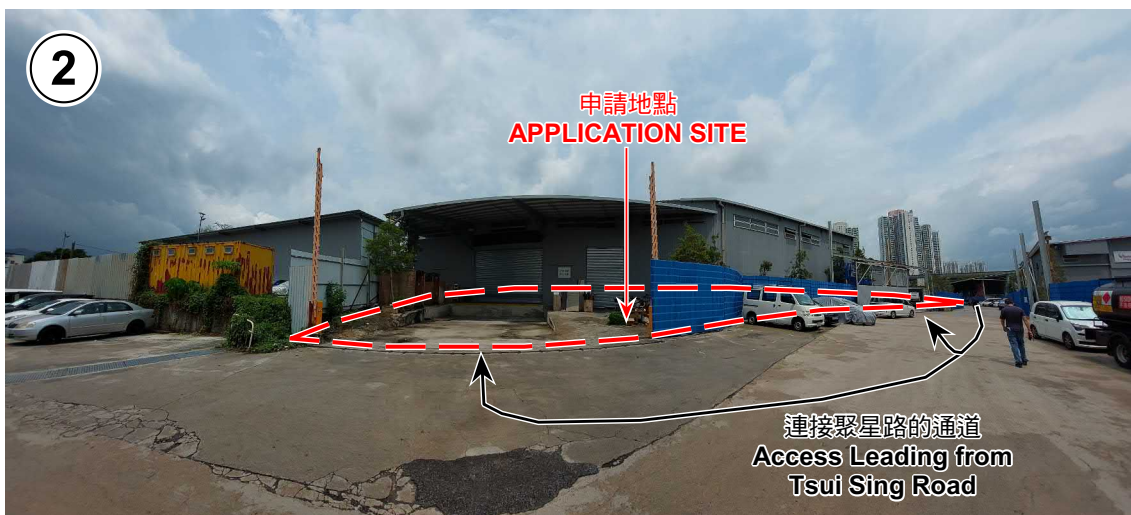
臨時商店及服務業及建築材料批發(為期3年)
新界元朗屏山丈量約份第122約
地段第256號(部分)、258號餘段(部分)及第259號
TEMPORARY SHOP AND SERVICES AND WHOLESALE OF
CONSTRUCTION MATERIALS FOR A PERIOD OF 3 YEARS
LOTS 256 (PART), 258 RP (PART) AND 259 IN D.D.122,
PING SHAN, YUEN LONG, NEW TERRITORIES

規劃署
PLANNING
DEPARTMENT



參考編號
REFERENCE No.
A/YL-PS/713

圖 PLAN
A-3



申請地點界線只作識別用 APPLICATION SITE BOUNDARY FOR IDENTIFICATION PURPOSE ONLY

實地照片 SITE PHOTOS

臨時商店及服務業及建築材料批發(為期3年)
新界元朗屏山丈量約份第122約
地段第256號(部分)、258號餘段(部分)及第259號
TEMPORARY SHOP AND SERVICES AND WHOLESAL OF
CONSTRUCTION MATERIALS FOR A PERIOD OF 3 YEARS
LOTS 256 (PART), 258 RP (PART) AND 259 IN D.D.122,
PING SHAN, YUEN LONG, NEW TERRITORIES

規劃署
PLANNING
DEPARTMENT



參考編號
REFERENCE No.
A/YL-PS/713

圖 PLAN
A-4

本圖於2024年5月3日擬備，所根據的
資料為攝於2024年4月19日的實地照片
PLAN PREPARED ON 3.5.2024
BASED ON SITE PHOTOS
TAKEN ON 19.4.2024