

Project 項目名稱:

Proposed Temporary Shop & Services (Retail Shop for Selling Construction Material) and Wholesale of Construction Material for a Period of 3 Years at Lot 255 RP (Part) in D.D. 122, Ping Shan, Yuen Long, N.T.

Drawing Title 圖目:

Vehicular Access Plan

Drawing No. 圖號:

Figure 2

Remarks 備註:

●●● Vehicular access leading from Tsui Sing Road

Scale 比例:

1:7500

(摘錄自申請人於 16. 4. 2024 呈交的申請書)  
(Extract from Applicant's Submission of 16.4.2024)

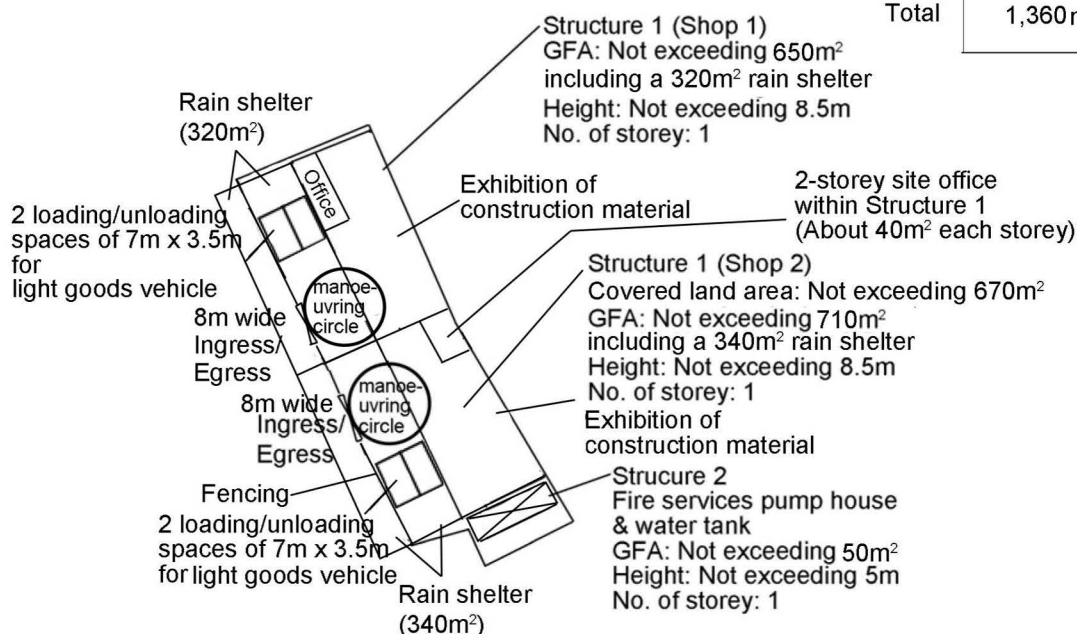
參考編號  
REFERENCE No.  
AYL-PS/714

繪圖 DRAWING  
A-1



Breakdown of GFA of Structure 1

	Shop 1	Shop 2	GFA Sub-total
Size of the shop	310m <sup>2</sup>	290m <sup>2</sup>	600m <sup>2</sup>
Size of the rain shelter	320m <sup>2</sup>	340m <sup>2</sup>	660m <sup>2</sup>
Office	20m <sup>2</sup>	80m <sup>2</sup> (2-storeys)	100m <sup>2</sup>
Total			1,360m <sup>2</sup>



Project 項目名稱:

Proposed Temporary Shop & Services  
(Retail Shop for Selling Construction  
Material) and Wholesale of Construction  
Material for a Period of 3 Years at Lot  
255 RP (Part) in D.D. 122, Ping Shan,  
Yuen Long, N.T.

Drawing Title 圖目:

Proposed Layout Plan

Remarks 備註:

Drawing No. 圖號:

Figure 3

Scale 比例:

1:1000

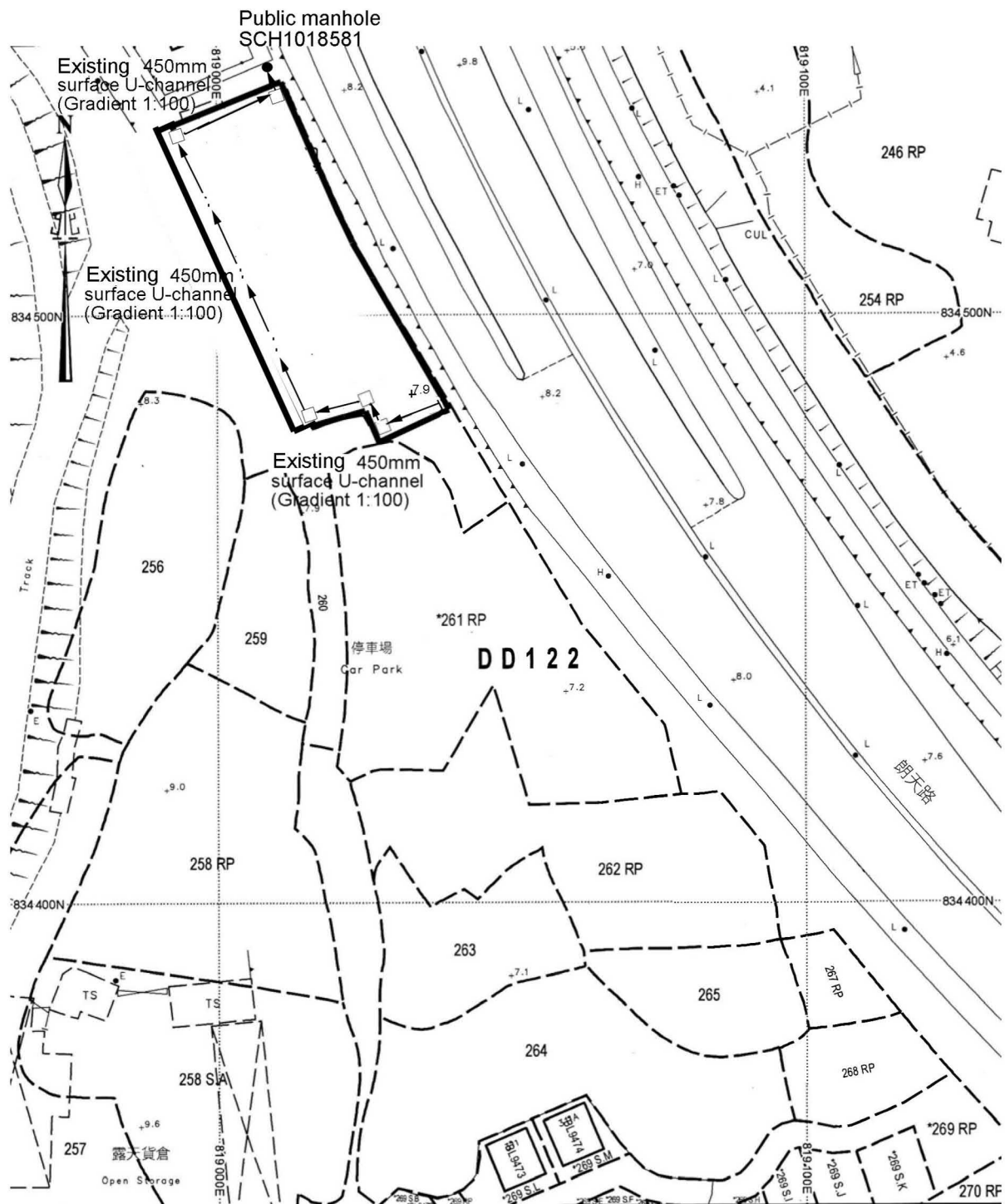
The map shows a residential area with several lots and features. Key elements include:

- Contour Lines:** Elevation markers such as +8.2, +7.6, +7.9, +7.2, +7.1, +7.8, +8.0, +7.0, +4.1, +4.6, +9.0, +9.6, and +6.1.
- Property Boundaries:** Dashed lines delineating lots 255 RP, 256, 259, 258 RP, 260, 261 RP, 262 RP, 263, 264, 265, 268 RP, and 269 RP.
- Infrastructure:** A "Track" on the left, a "Car Park" (停車場) near lot 261 RP, and a "CUL" (culvert) near lot 254 RP.
- Other Labels:** "DD 122" in the center, "朗天路" (Lang Tin Road) on the right, and "露天貨倉" (Open Storage) near lot 257.
- Grid Lines:** Horizontal lines labeled 834 500N and 834 400N, and vertical lines labeled 819 000E and 819 100E.
- Map Features:** A north arrow in the top left corner and a scale bar at the bottom right.

Tree	Approximate Height	Spacing
○ Existing <i>Bauhinia blakeana</i> to be preserved	2.75m	4m

~~1:1000~~

繪圖 DRAWING  
A-3



Project 項目名稱:

Proposed Temporary Shop & Services (Retail Shop for Selling Construction Material) and Wholesale of Construction Material for a Period of 3 Years at Lot 255 RP (Part) in D.D. 122, Ping Shan, Yuen Long, N.T.

Drawing Title 圖目:

As-built Drainage Plan

Drawing No. 圖號:

Figure 4

Remarks 備註:

+8.3 Level (in mPD)

⇐ Flow of surface runoff

□ Existing catchpit

Scale 比例:

1:1000

(摘錄自申請人於 16. 4. 2024 呈交的申請書)  
(Extract from Applicant's  
Submission of 16.4.2024)

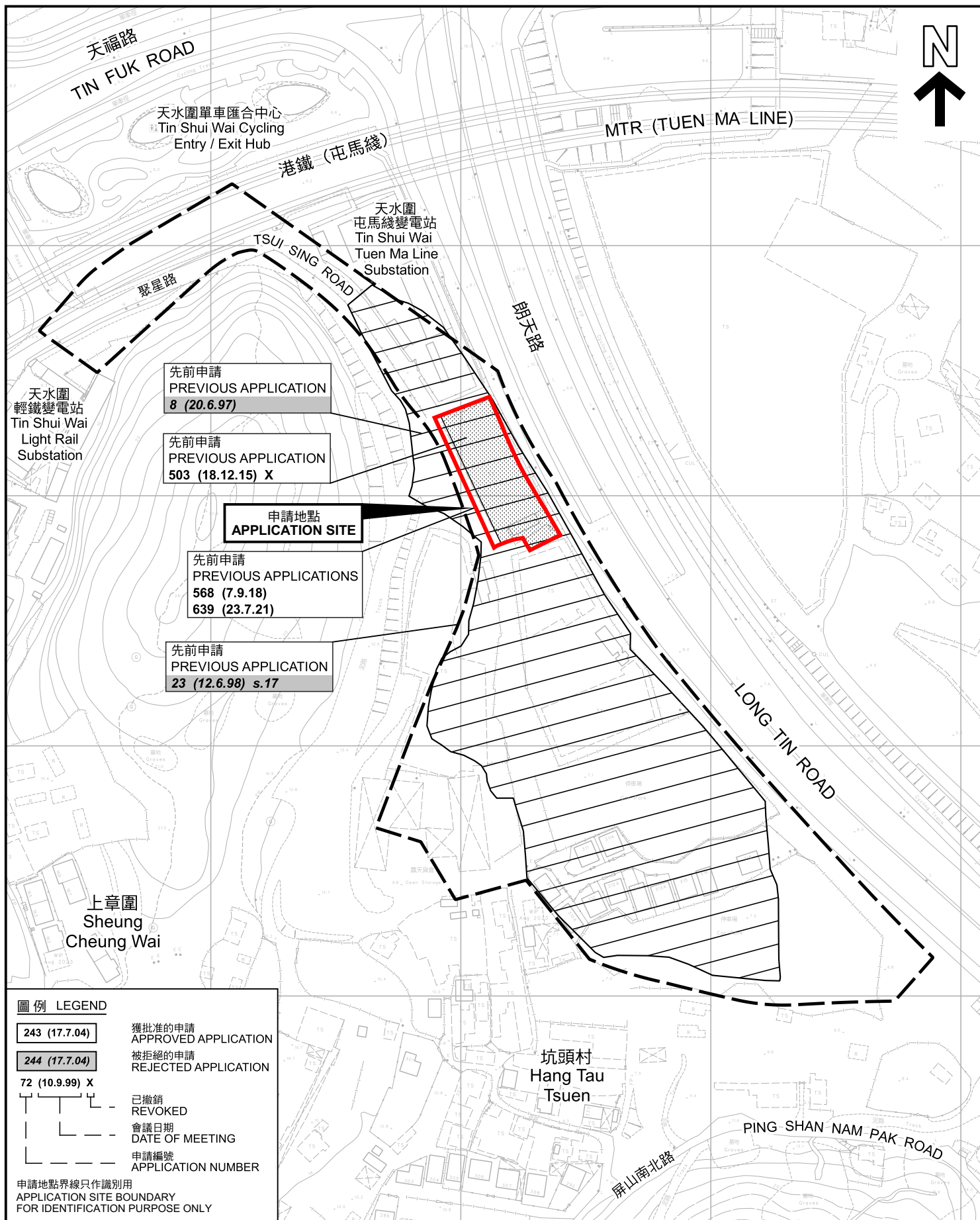
參考編號  
REFERENCE No.  
A/YL-PS/714

繪圖 DRAWING  
A-4









### 先前申請圖 PREVIOUS APPLICATIONS PLAN

臨時商店及服務行業(零售建築材料)及建築材料批發的規劃許可續期(為期3年)  
新界元朗屏山丈量約份第122約地段第255號餘段(部分)  
RENEWAL OF PLANNING APPROVAL FOR TEMPORARY SHOP AND SERVICES  
(RETAIL SHOP FOR SELLING CONSTRUCTION MATERIAL) AND  
WHOLESALE OF CONSTRUCTION MATERIAL FOR A PERIOD OF 3 YEARS  
LOT 255 RP (PART) IN D.D.122,  
PING SHAN, YUEN LONG, NEW TERRITORIES

SCALE 1 : 2 000 比例尺  
米 40 0 40 80 米  
METRES

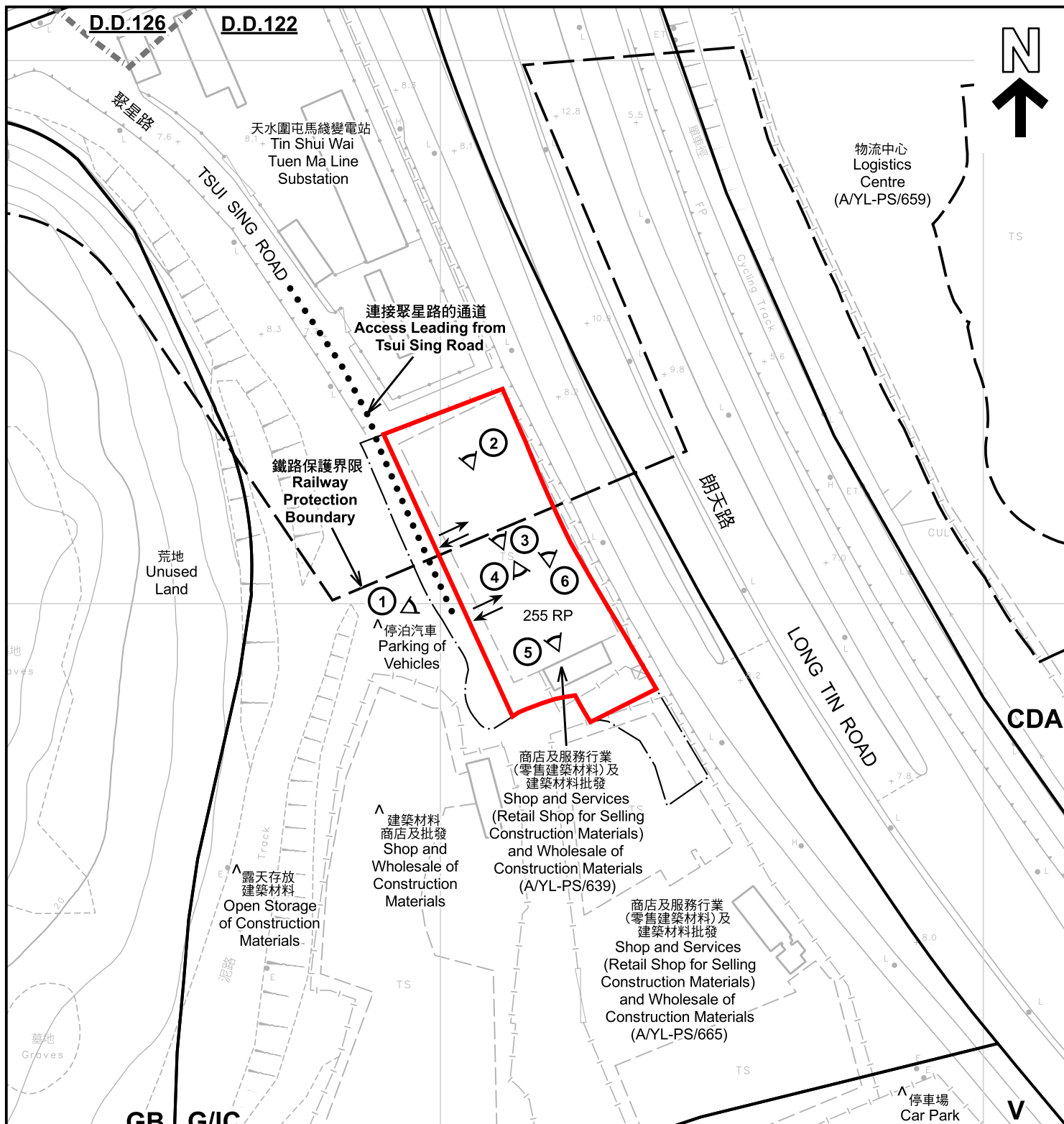
規劃署  
PLANNING  
DEPARTMENT



參考編號  
REFERENCE No.  
A/YL-PS/714

圖 PLAN  
A-1b

本摘要圖於2024年5月3日擬備，所根據的  
資料為測量圖編號 6-NW-8B  
EXTRACT PLAN PREPARED ON 3.5.2024  
BASED ON SURVEY SHEET No.  
6-NW-8B



註釋 Notes:

- (1) 2024年4月23日勘測的土地用途  
Land uses shown on this plan are in accordance with the land use survey conducted by the Planning Department on 23.4.2024
- (2) \* 土地用途跟1993年7月勘測的土地用途一致  
Indicates that the use is the same as that revealed by the land use survey conducted by the Planning Department in Jul 1993
- (3) ^ 土地用途跟1993年7月勘測的土地用途有別  
Indicates that the use is different from that revealed by the land use survey conducted by the Planning Department in Jul 1993

圖例 LEGEND

- 申請地點 (界線只作識別用)  
APPLICATION SITE (BOUNDARY FOR IDENTIFICATION PURPOSE ONLY)
- 綜合發展區  
COMPREHENSIVE DEVELOPMENT AREA
- 鄉村式發展  
VILLAGE TYPE DEVELOPMENT
- 政府、機構或社區  
GOVERNMENT, INSTITUTION OR COMMUNITY
- 綠化地帶  
GREEN BELT
- 丈量約份界線  
D.D. BOUNDARY
- 實地照片的觀景點  
VIEWING POINT OF SITE PHOTO
- 入口/出口  
INGRESS / EGRESS

平面圖 SITE PLAN

臨時商店及服務行業(零售建築材料)及建築材料批發的規劃許可續期(為期3年)  
新界元朗屏山丈量約份第122約地段第255號餘段(部分)  
RENEWAL OF PLANNING APPROVAL FOR TEMPORARY SHOP AND SERVICES  
(RETAIL SHOP FOR SELLING CONSTRUCTION MATERIAL) AND  
WHOLESALE OF CONSTRUCTION MATERIAL FOR A PERIOD OF 3 YEARS  
LOT 255 RP (PART) IN D.D.122,  
PING SHAN, YUEN LONG, NEW TERRITORIES

本摘要圖於2024年5月28日擬備，所根據的  
資料為測量圖編號 6-NW-8B  
EXTRACT PLAN PREPARED ON 28.5.2024  
BASED ON SURVEY SHEET No.  
6-NW-8B

SCALE 1:1 000 比例尺  
米 20 0 20 40 米  
METRES

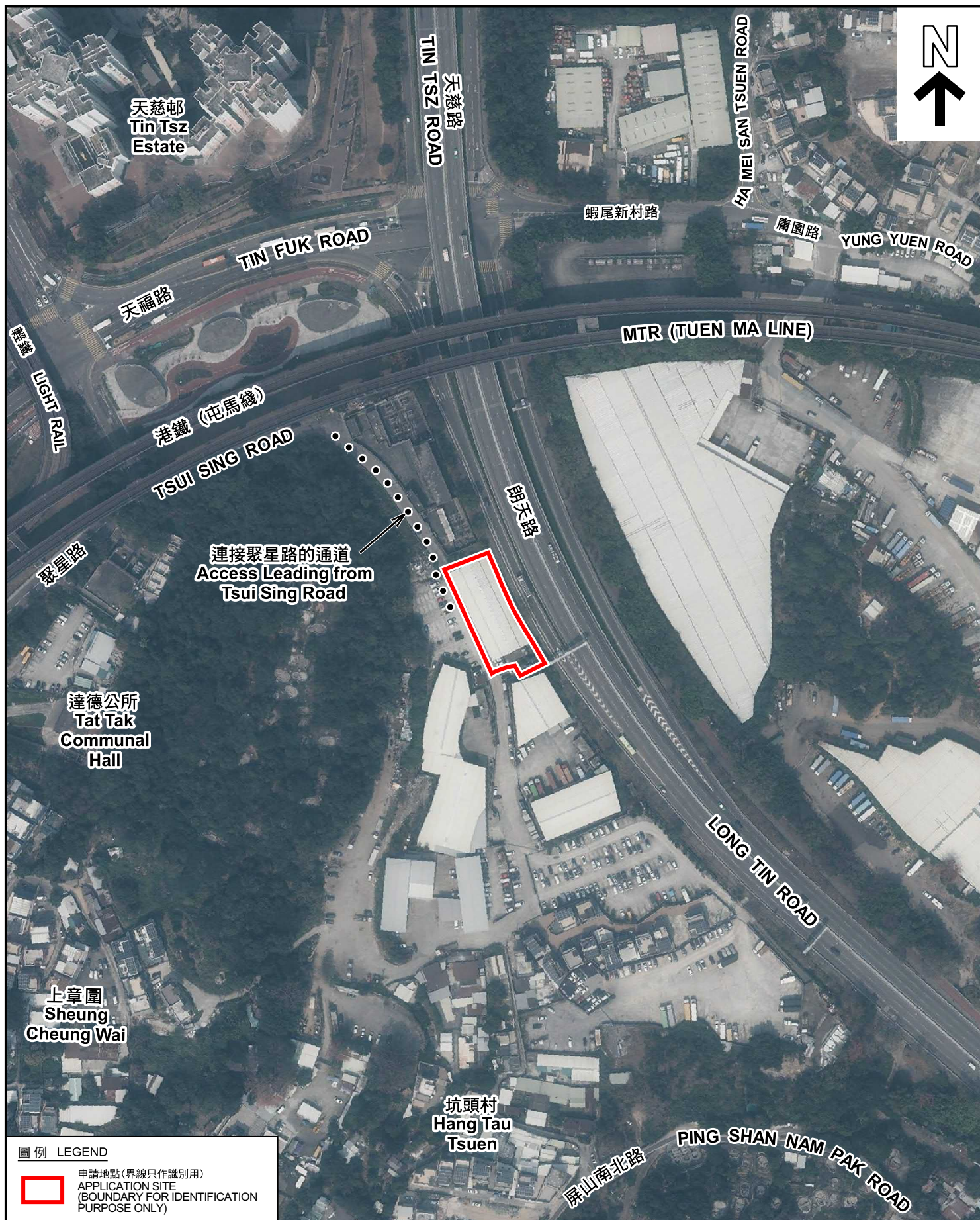
規劃署  
PLANNING  
DEPARTMENT



參考編號  
REFERENCE No.  
A/YL-PS/714

圖 PLAN  
A-2





圖例 LEGEND



申請地點(界線只作識別用)  
APPLICATION SITE  
(BOUNDARY FOR IDENTIFICATION  
PURPOSE ONLY)

本摘要圖於2024年5月3日擬備，所根據的資料為地政總署於2023年2月24日拍得的航攝照片編號 E187390C  
EXTRACT PLAN PREPARED ON 3.5.2024  
BASED ON AERIAL PHOTO No.  
E187390C TAKEN ON 24.2.2023  
BY LANDS DEPARTMENT

航攝照片 AERIAL PHOTO

臨時商店及服務行業(零售建築材料)及建築材料批發的規劃許可續期(為期3年)  
新界元朗屏山丈量約份第122約地段第255號餘段(部分)  
RENEWAL OF PLANNING APPROVAL FOR TEMPORARY SHOP AND SERVICES  
(RETAIL SHOP FOR SELLING CONSTRUCTION MATERIAL) AND  
WHOLESALE OF CONSTRUCTION MATERIAL FOR A PERIOD OF 3 YEARS  
LOT 255 RP (PART) IN D.D.122,  
PING SHAN, YUEN LONG, NEW TERRITORIES

規劃署  
PLANNING  
DEPARTMENT



參考編號  
REFERENCE No.  
A/YL-PS/714

圖 PLAN  
A-3





申請地點界線只作識別用 APPLICATION SITE BOUNDARY FOR IDENTIFICATION PURPOSE ONLY

### 實地照片 SITE PHOTOS

臨時商店及服務行業（零售建築材料）及建築材料批發的規劃許可續期（為期3年）  
新界元朗屏山丈量約份第122約地段第255號餘段（部分）  
RENEWAL OF PLANNING APPROVAL FOR TEMPORARY SHOP AND SERVICES  
(RETAIL SHOP FOR SELLING CONSTRUCTION MATERIAL) AND  
WHOLESALE OF CONSTRUCTION MATERIAL FOR A PERIOD OF 3 YEARS  
LOT 255 RP (PART) IN D.D.122,  
PING SHAN, YUEN LONG, NEW TERRITORIES

規劃署  
PLANNING  
DEPARTMENT

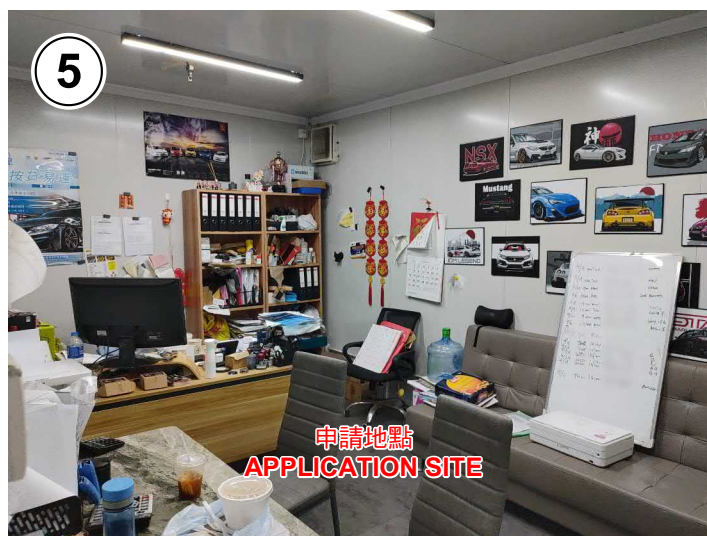


參考編號  
REFERENCE No.  
A/YL-PS/714

圖 PLAN  
A-4a

本圖於2024年5月3日擬備，所根據的  
資料為攝於2024年4月23日的實地照片  
PLAN PREPARED ON 3.5.2024  
BASED ON SITE PHOTOS  
TAKEN ON 23.4.2024





### 實地照片 SITE PHOTOS

臨時商店及服務行業(零售建築材料)及建築材料批發的規劃許可續期(為期3年)  
 新界元朗屏山丈量約份第122約地段第255號餘段(部分)  
 RENEWAL OF PLANNING APPROVAL FOR TEMPORARY SHOP AND SERVICES  
 (RETAIL SHOP FOR SELLING CONSTRUCTION MATERIAL) AND  
 WHOLESALE OF CONSTRUCTION MATERIAL FOR A PERIOD OF 3 YEARS  
 LOT 255 RP (PART) IN D.D.122,  
 PING SHAN, YUEN LONG, NEW TERRITORIES

規劃署  
 PLANNING  
 DEPARTMENT



參考編號  
 REFERENCE No.  
 A/YL-PS/714

圖 PLAN  
 A-4b

本圖於2024年5月30日擬備，所根據的  
 資料為攝於2024年4月23日的實地照片  
 PLAN PREPARED ON 30.5.2024  
 BASED ON SITE PHOTOS  
 TAKEN ON 23.4.2024