			Title: Proposed Layout Plan Project No.: PPC-PLG-10064	Project: Section 16 Planning Application for Proposed Temporary Eating Place and Shop and Services for a Period of 3 Years at Lot 841 RP in D.D. 114, Shek Kong, New Territories
Figure: 3	Scale: N/A	Date: February 2021		

(資料來源: 申請人於 4. 3. 2021 呈交的資料)
(Source : Applicant's Submission of 4.3.2021)

參考編號
REFERENCE No.
A/YL-SK/296

繪圖 DRAWING
A-1



要覽圖 KEY PLAN

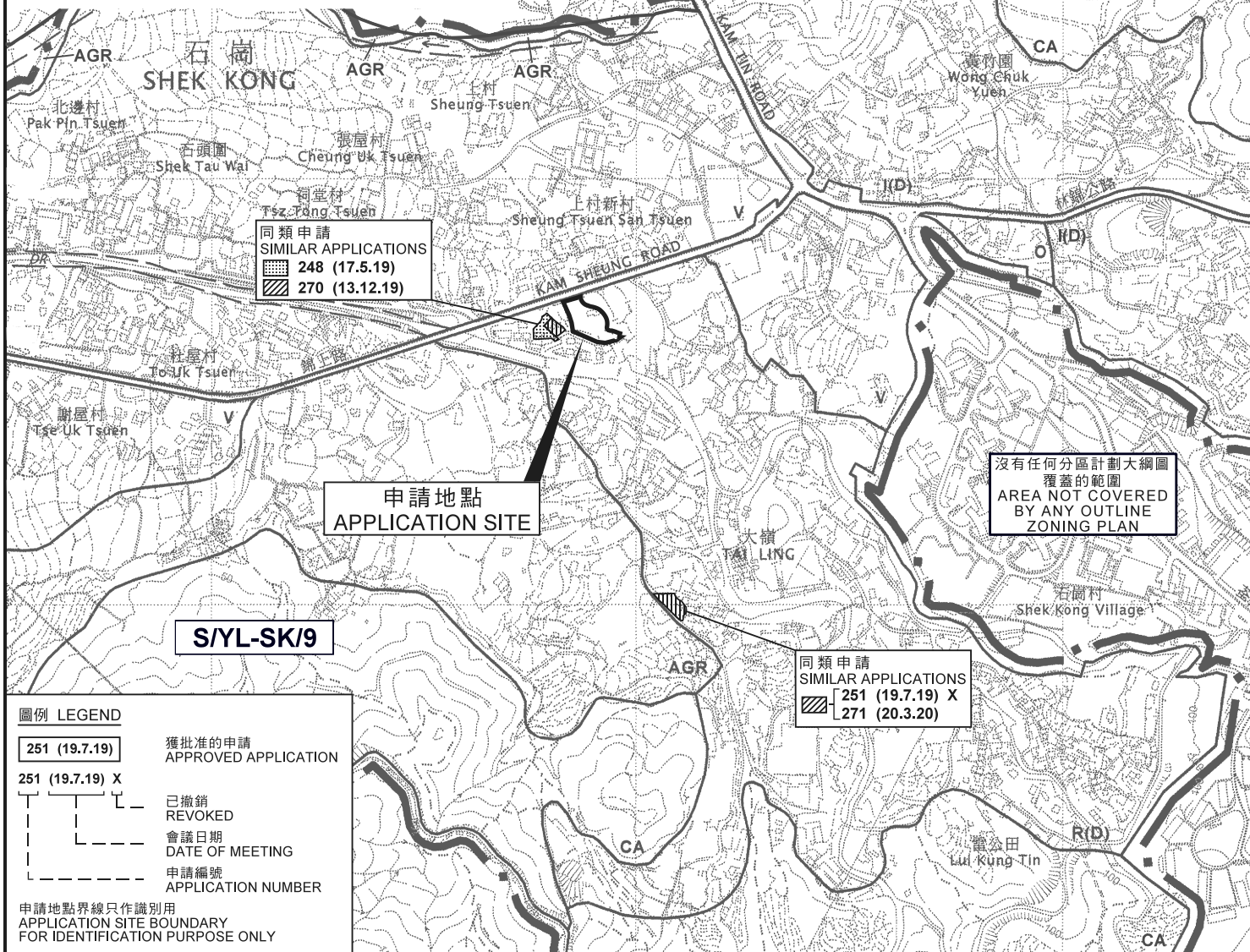
SCALE 1 : 50 000 比例尺



S/YL-PH/11

沒有任何分區計劃大綱圖
覆蓋的範圍
AREA NOT COVERED
BY ANY OUTLINE
ZONING PLAN

林村郊野公園
LAM TSUEN COUNTRY PARK



同類申請
SIMILAR APPLICATIONS
248 (17.5.19)
270 (13.12.19)

沒有任何分區計劃大綱圖
覆蓋的範圍
AREA NOT COVERED
BY ANY OUTLINE
ZONING PLAN

S/YL-SK/9

同類申請
SIMILAR APPLICATIONS
251 (19.7.19) X
271 (20.3.20)

圖例 LEGEND

251 (19.7.19)

獲批准的申請
APPROVED APPLICATION

251 (19.7.19) X

已撤銷
REVOKED

會議日期
DATE OF MEETING

申請編號
APPLICATION NUMBER

申請地點界線只作識別用
APPLICATION SITE BOUNDARY
FOR IDENTIFICATION PURPOSE ONLY

位置圖 LOCATION PLAN

擬議臨時食肆及商店及服務行業（為期3年）
元朗石崗丈量約份第114約地段第841號餘段
PROPOSED TEMPORARY EATING PLACE AND SHOP
AND SERVICES FOR A PERIOD OF 3 YEARS
LOT 841 RP IN D.D. 114, SHEK KONG, YUEN LONG

SCALE 1 : 7 500 比例尺
米 100 0 100 200 300 米
METRES

規劃署

PLANNING
DEPARTMENT



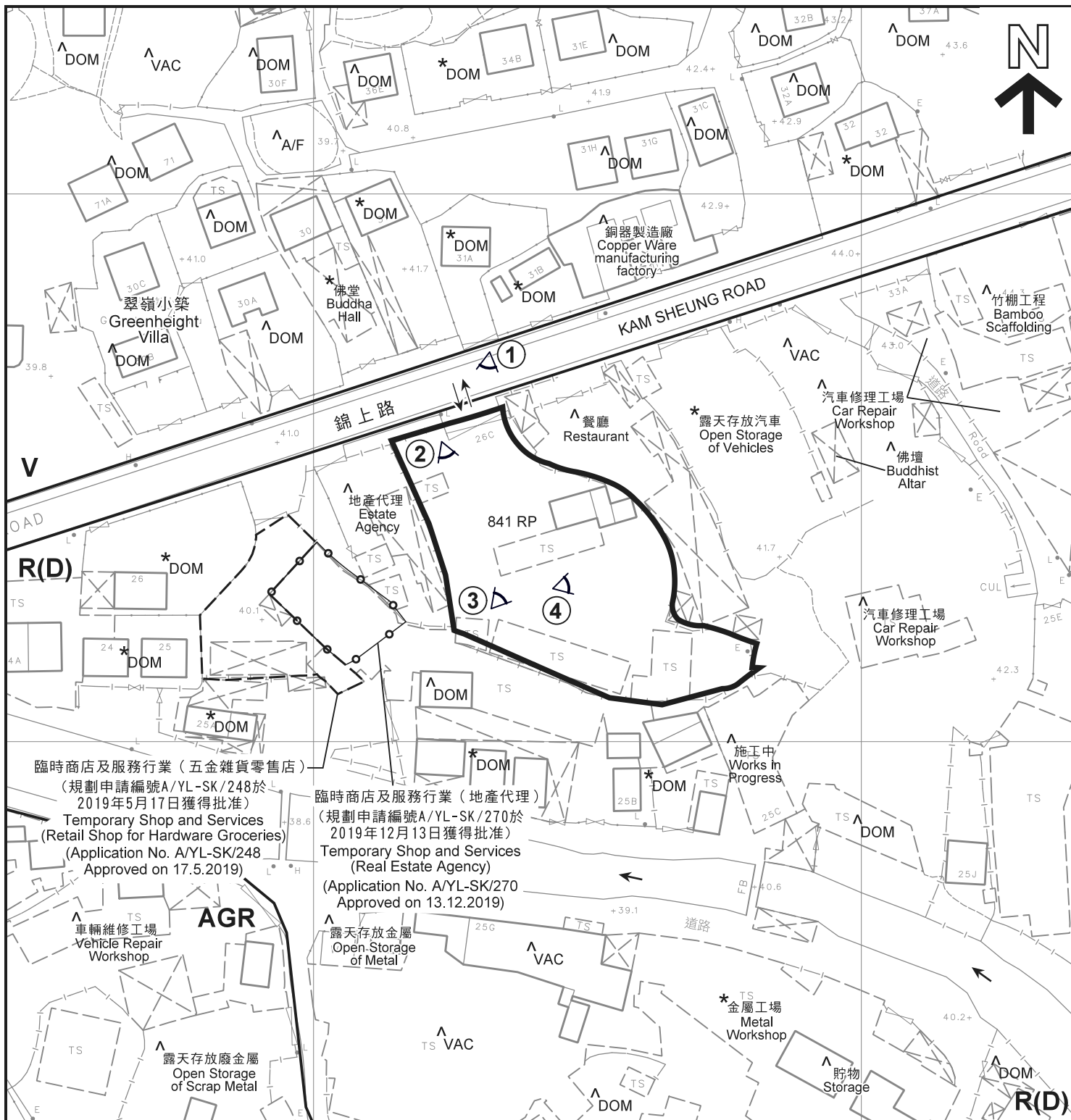
參考編號
REFERENCE No.

A/YL-SK/296

圖 PLAN

A-1

本摘要圖於2021年2月22日擬備，
所根據的資料為於2006年10月17日
核准的分區計劃大綱圖編號 S/YL-SK/9
EXTRACT PLAN PREPARED ON 22.2.2021
BASED ON OUTLINE ZONING PLAN No.
S/YL-SK/9 APPROVED ON 17.10.2006



圖例 LEGEND

- | | | | |
|-------------|------------------------------------------------------------------------------------|-----|-----------------------------------------|
| | 申請地點(界線只作識別用)
APPLICATION SITE
(BOUNDARY FOR IDENTIFICATION
PURPOSE ONLY) | DOM | 住用構築物
DOMESTIC STRUCTURE |
| R(D) | 住宅(丁類)
RESIDENTIAL (GROUP D) | A/F | 休耕農地
FALLOW AGRICULTURAL LAND |
| V | 鄉村式發展
VILLAGE TYPE DEVELOPMENT | VAC | 空置
VACANT |
| AGR | 農業
AGRICULTURE | | 入口/出口
INGRESS / EGRESS |
| | | | 實地照片的觀景點
VIEWING POINT OF SITE PHOTO |

註釋 Notes:

- (1) 2021年2月3日勘測的土地用途
Land uses shown on this plan are in accordance with the land use survey conducted by the Planning Department on 3.2.2021
- (2) * 土地用途跟1991年12月勘測的土地用途一致
Indicates that the use is the same as that revealed by the land use survey conducted by the Planning Department in Dec 1991
- (3) ^ 土地用途跟1991年12月勘測的土地用途有別
Indicates that the use is different from that revealed by the land use survey conducted by the Planning Department in Dec 1991

平面圖 SITE PLAN

擬議臨時食肆及商店及服務行業(為期3年)
元朗石崗丈量約份第114約地段第841號餘段
PROPOSED TEMPORARY EATING PLACE AND SHOP
AND SERVICES FOR A PERIOD OF 3 YEARS
LOT 841 RP IN D.D. 114, SHEK KONG, YUEN LONG

米 20 0 20 40 米
SCALE 1:1 000 比例尺
METRES

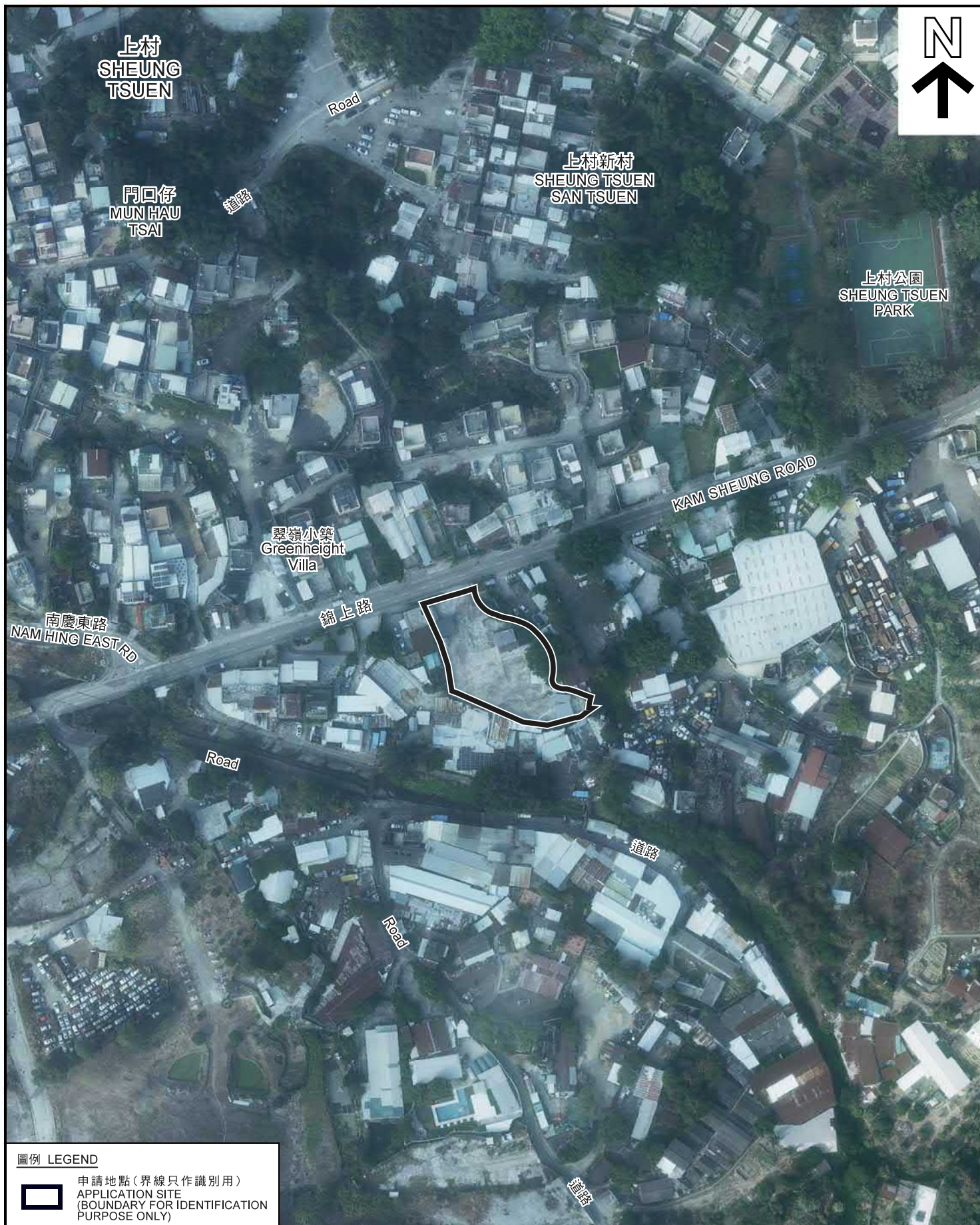
規劃署
PLANNING
DEPARTMENT



參考編號
REFERENCE No.
A/YL-SK/296

圖 PLAN
A-2

本摘要圖於2021年2月22日擬備，
所根據的資料為測量圖編號
6-NE-14D、15C、19B及20A
EXTRACT PLAN PREPARED ON 22.2.2021
BASED ON SURVEY SHEETS No.
6-NE-14D, 15C, 19B & 20A



圖例 LEGEND



申請地點 (界線只作識別用)
APPLICATION SITE
(BOUNDARY FOR IDENTIFICATION
PURPOSE ONLY)

本摘要圖於2021年2月22日擬備，所根據的資料為地政總署於2020年1月14日拍得的航攝照片編號 E087553C
EXTRACT PLAN PREPARED ON 22.2.2021
BASED ON AERIAL PHOTO No.
E087553C TAKEN ON 14.1.2020
BY LANDS DEPARTMENT

航攝照片 AERIAL PHOTO

擬議臨時食肆及商店及服務行業 (為期3年)
元朗石崗丈量約份第114約地段第841號餘段
PROPOSED TEMPORARY EATING PLACE AND SHOP
AND SERVICES FOR A PERIOD OF 3 YEARS
LOT 841 RP IN D.D. 114, SHEK KONG, YUEN LONG

規劃署
PLANNING
DEPARTMENT



參考編號
REFERENCE No.
A/YL-SK/296

圖 PLAN
A-3



<p>本摘要圖於2021年2月22日擬備， 所根據的資料為攝於 2021年2月3日的實地照片 PLAN PREPARED ON 22.2.2021 BASED ON SITE PHOTOS TAKEN ON 3.2.2021</p>	<p>實地照片 SITE PHOTO</p> <p>擬議臨時食肆及商店及服務行業（為期3年） 元朗石崗丈量約份第114約地段第841號餘段 PROPOSED TEMPORARY EATING PLACE AND SHOP AND SERVICES FOR A PERIOD OF 3 YEARS LOT 841 RP IN D.D. 114, SHEK KONG, YUEN LONG</p>	<p>規劃署 PLANNING DEPARTMENT</p> <p>參考編號 REFERENCE No. A/YL-SK/296</p> <p>圖 PLAN A-4</p>	
------------------------------------------------------------------------------------------------------------------------------------------	-----------------------------------------------------------------------------------------------------------------------------------------------------------------------------------------------------------------------------	---------------------------------------------------------------------------------------------------------------------------------	--