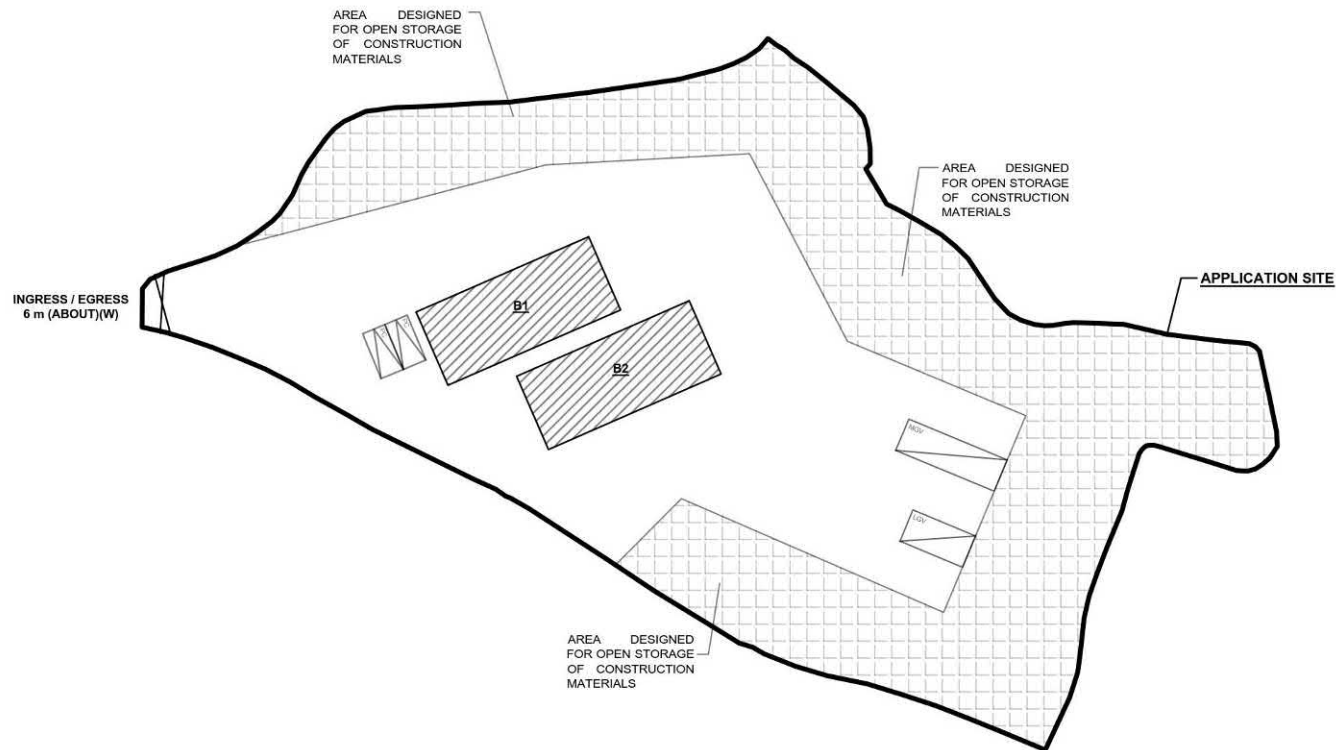
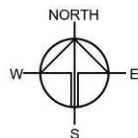


## DEVELOPMENT PARAMETERS

APPLICATION SITE AREA	: 4,226 m <sup>2</sup>	(ABOUT)
COVERED AREA	: 320 m <sup>2</sup>	(ABOUT)
UNCOVERED AREA	: 3,906 m <sup>2</sup>	(ABOUT)
PLOT RATIO	: 0.08	(ABOUT)
SITE COVERAGE	: 8 %	(ABOUT)
NO. OF STRUCTURE	: 2	
DOMESTIC GFA	: NOT APPLICABLE	
NON-DOMESTIC GFA	: 320 m <sup>2</sup>	(ABOUT)
TOTAL GFA	: 320 m <sup>2</sup>	(ABOUT)
BUILDING HEIGHT	: 5 m	(ABOUT)
NO. OF STOREY	: 1	

STRUCTURE	USE	COVERED AREA	GFA	BUILDING HEIGHT
B1	SHED FOR STORAGE OF CONSTRUCTION MATERIALS AND SITE OFFICE	160 m <sup>2</sup> (ABOUT)	160 m <sup>2</sup> (ABOUT)	5 m (ABOUT)(1-STOREY)
B2	SHED FOR STORAGE OF CONSTRUCTION MATERIALS AND SITE OFFICE	160 m <sup>2</sup> (ABOUT)	160 m <sup>2</sup> (ABOUT)	5 m (ABOUT)(1-STOREY)
TOTAL		320 m <sup>2</sup> (ABOUT)	320 m <sup>2</sup> (ABOUT)	



## PARKING AND LOADING / UNLOADING (L/U) PROVISIONS

NO. OF PRIVATE CAR PARKING SPACE	: 2
DIMENSION OF PARKING SPACE	: 5 m (L) x 2.5 m (W)
NO. OF L/U SPACE FOR LIGHT GOODS VEHICLE	: 1
DIMENSION OF L/U SPACE	: 7 m (L) X 3.5 m (W)
NO. OF L/U SPACE FOR MEDIUM GOODS VEHICLE	: 1
DIMENSION OF L/U SPACE	: 11 m (L) X 3.5 m (W)

## LEGEND

	APPLICATION SITE
	STRUCTURE (SHED)
	PARKING SPACE (PRIVATE CAR)
	L/U SPACE (LIGHT GOODS VEHICLE)
	L/U SPACE (MEDIUM GOODS VEHICLE)
	INGRESS / EGRESS

PLANNING CONSULTANT



PROJECT

PROPOSED TEMPORARY OPEN STORAGE OF CONSTRUCTION MATERIALS WITH ANCILLARY FACILITIES FOR A PERIOD OF 3 YEARS AND ASSOCIATED FILLING OF LAND

SITE LOCATION

LOT 1080 (PART) IN D.D. 106, KAM TIN, YUEN LONG, NEW TERRITORIES

SCALE

1:700 @ 1/4"

DRAWN BY	DATE
MN	12.6.2024
CHECKED BY	DATE
APPROVED BY	DATE
DWG. TITLE	
LAYOUT PLAN	
DWG. NO.	VER.
PLAN 5	001

(資料來源：申請人於 17. 7. 2024 呈交的資料)  
(Source: Applicant's Submission of 17.7.2024)

參考編號  
REFERENCE No.

A/YL-SK/384

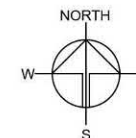
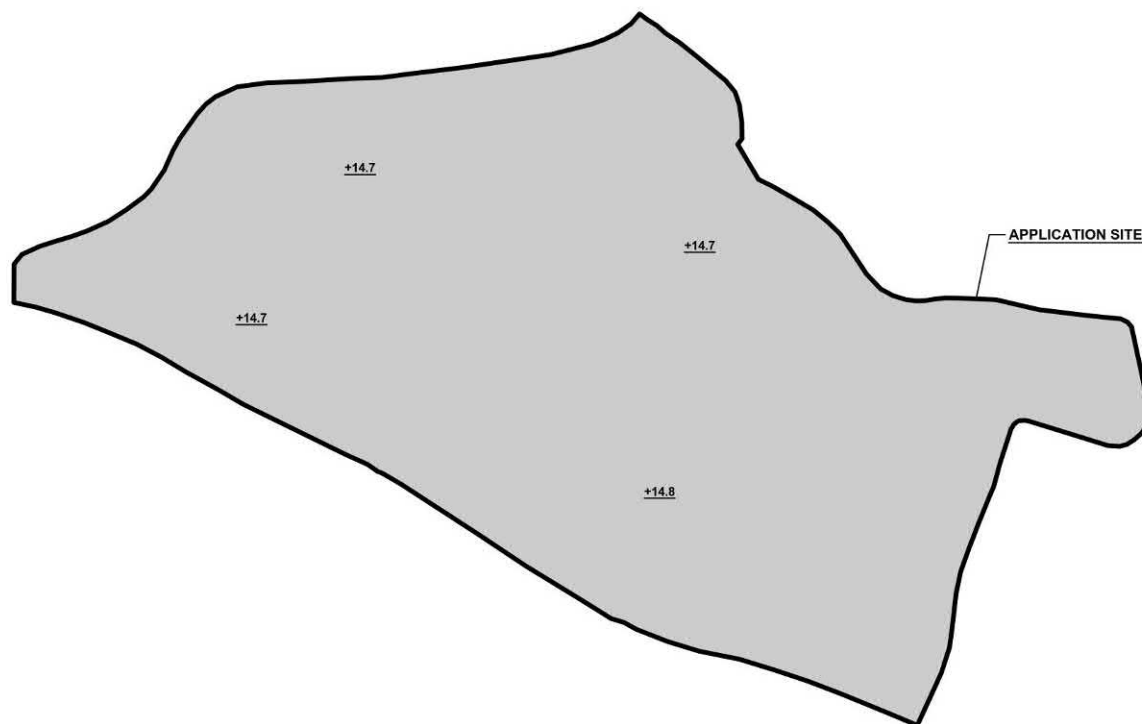
繪圖 DRAWING

A-1

# PAVED RATIO OF THE APPLICATION SITE

APPLICATION SITE AREA	: 4,226 m <sup>2</sup>	(ABOUT)
EXISTING SITE SURFACE	: HARD-PAVED	
EXISTING SITE LEVEL	: +14.7 mPD TO +14.8 mPD	(ABOUT)
DEPTH OF LAND FILLING	: NOT MORE THAN 0.2 m	

THE APPLICATION SITE HAS BEEN HARD-PAVED WITH CONCRETE. NO FURTHER FILLING OF LAND WILL BE CARRIED OUT AT THE SITE DURING THE PLANNING APPROVAL PERIOD.



PLANNING CONSULTANT



PROJECT

PROPOSED TEMPORARY OPEN STORAGE OF CONSTRUCTION MATERIALS WITH ANCILLARY FACILITIES FOR A PERIOD OF 3 YEARS AND ASSOCIATED FILLING OF LAND

SITE LOCATION

LOT 1080 (PART) IN D.D. 106, KAM TIN, YUEN LONG, NEW TERRITORIES

SCALE

1:700 @ A4

DRAWN BY	DATE
MN	12.6.2024
REVISED BY	DATE
APPROVED BY	DATE

DWG. TITLE  
FILLING OF LAND AREA

DWG. NO.	VER.
PLAN 6	001

## LEGEND

	APPLICATION SITE
<u>+14.7</u>	EXISTING SITE LEVELS
	EXISTING HARD-PAVED AREA

SITE BOUNDARY FOR IDENTIFICATION PURPOSE.

(資料來源：申請人於 17. 7. 2024 呈交的資料)  
(Source: Applicant's Submission of 17.7.2024)

參考編號  
REFERENCE No.  
A/YL-SK/384

繪圖 DRAWING  
A-2

# TREE PRESERVATION AND LANDSCAPE PROPOSAL

APPLICATION SITE AREA : 4,226 m<sup>2</sup> (ABOUT)

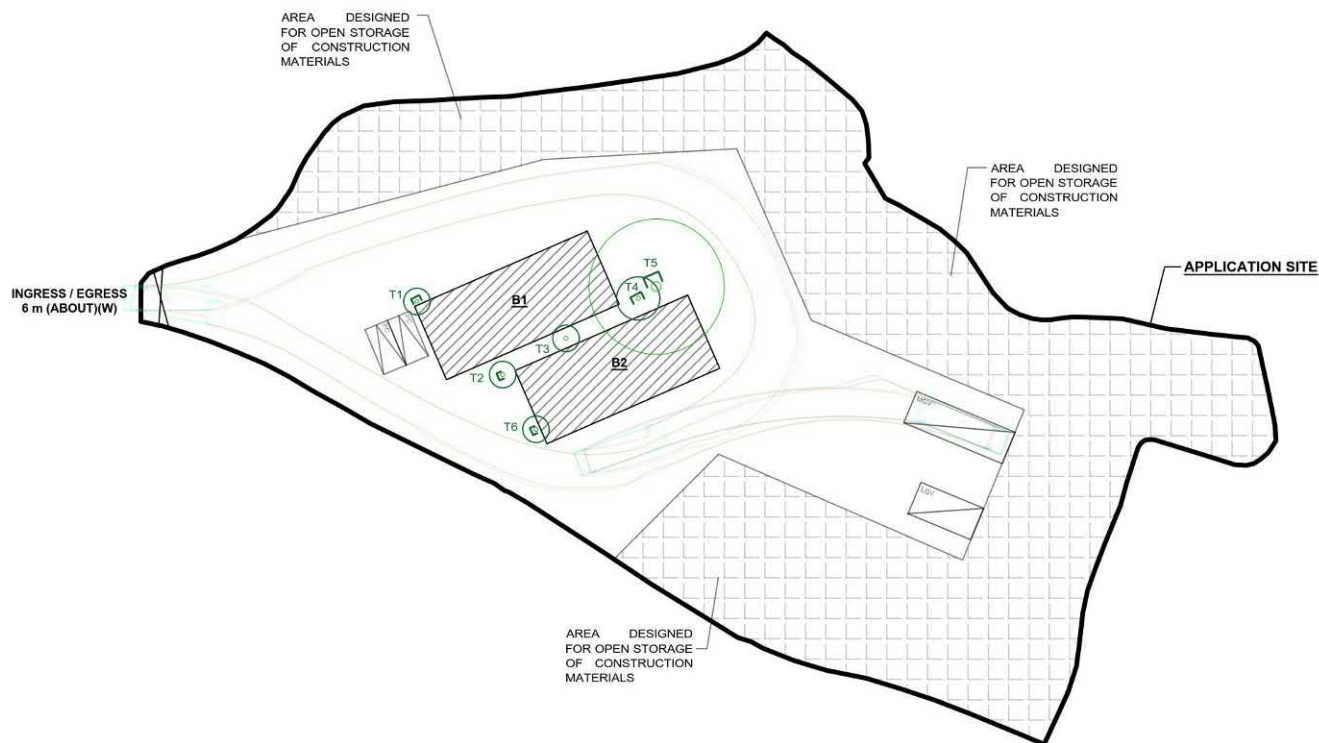
NO. OF EXISTING TREE SPECIES OF TREES

: 6 (T1 TO T6)  
 : T1 - MELIA AZEDARACH  
 T2 - DIMOCARPUS LONGAN  
 T3 - DIMOCARPUS LONGAN  
 T4 - DIMOCARPUS LONGAN  
 T5 - FICUS MICROCARPA  
 T6 - DIMOCARPUS LONGAN

NO. OF TREES WILL BE PRESERVED : 6 (T1 TO T6)

KERBS ARE PROPOSED AT TREES (T1, T2, T4, T5 AND T6) TO PREVENT TREE FROM DAMAGING BY MOVEMENT OF VEHICLES.

STRUCTURE	USE	COVERED AREA	GFA	BUILDING HEIGHT
B1	SHED FOR STORAGE OF CONSTRUCTION MATERIALS AND SITE OFFICE*	160 m <sup>2</sup> (ABOUT)	160 m <sup>2</sup> (ABOUT)	5 m (ABOUT)(1-STOREY)
B2	SHED FOR STORAGE OF CONSTRUCTION MATERIALS AND SITE OFFICE*	160 m <sup>2</sup> (ABOUT)	160 m <sup>2</sup> (ABOUT)	5 m (ABOUT)(1-STOREY)
TOTAL		320 m <sup>2</sup> (ABOUT)	320 m <sup>2</sup> (ABOUT)	



## PARKING AND LOADING / UNLOADING (L/U) PROVISIONS

NO. OF PRIVATE CAR PARKING SPACE : 2  
 DIMENSION OF PARKING SPACE : 5 m (L) x 2.5 m (W)  
 NO. OF L/U SPACE FOR LIGHT GOODS VEHICLE : 1  
 DIMENSION OF L/U SPACE : 7 m (L) X 3.5 m (W)  
 NO. OF L/U SPACE FOR MEDIUM GOODS VEHICLE : 1  
 DIMENSION OF L/U SPACE : 11 m (L) X 3.5 m (W)

## LEGEND

- APPLICATION SITE
- STRUCTURE (SHED)
- PARKING SPACE (PRIVATE CAR)
- L/U SPACE (LIGHT GOODS VEHICLE)
- L/U SPACE (MEDIUM GOODS VEHICLE)
- INGRESS / EGRESS
- EXISTING TREES

PLANNING CONSULTANT



PROJECT

PROPOSED TEMPORARY OPEN STORAGE OF CONSTRUCTION MATERIALS WITH ANCILLARY FACILITIES FOR A PERIOD OF 3 YEARS AND ASSOCIATED FILLING OF LAND

SITE LOCATION

LOT 1080 (PART) IN D.D. 106, KAM TIN, YUEN LONG, NEW TERRITORIES

SCALE

1:700 @ A4

DRAWN BY MN	DATE 22.8.2024
CHECKED BY	DATE
APPROVED BY	DATE
DWG. TITLE LANDSCAPE PLAN	
DWG. NO. PLAN 1	VER. 002

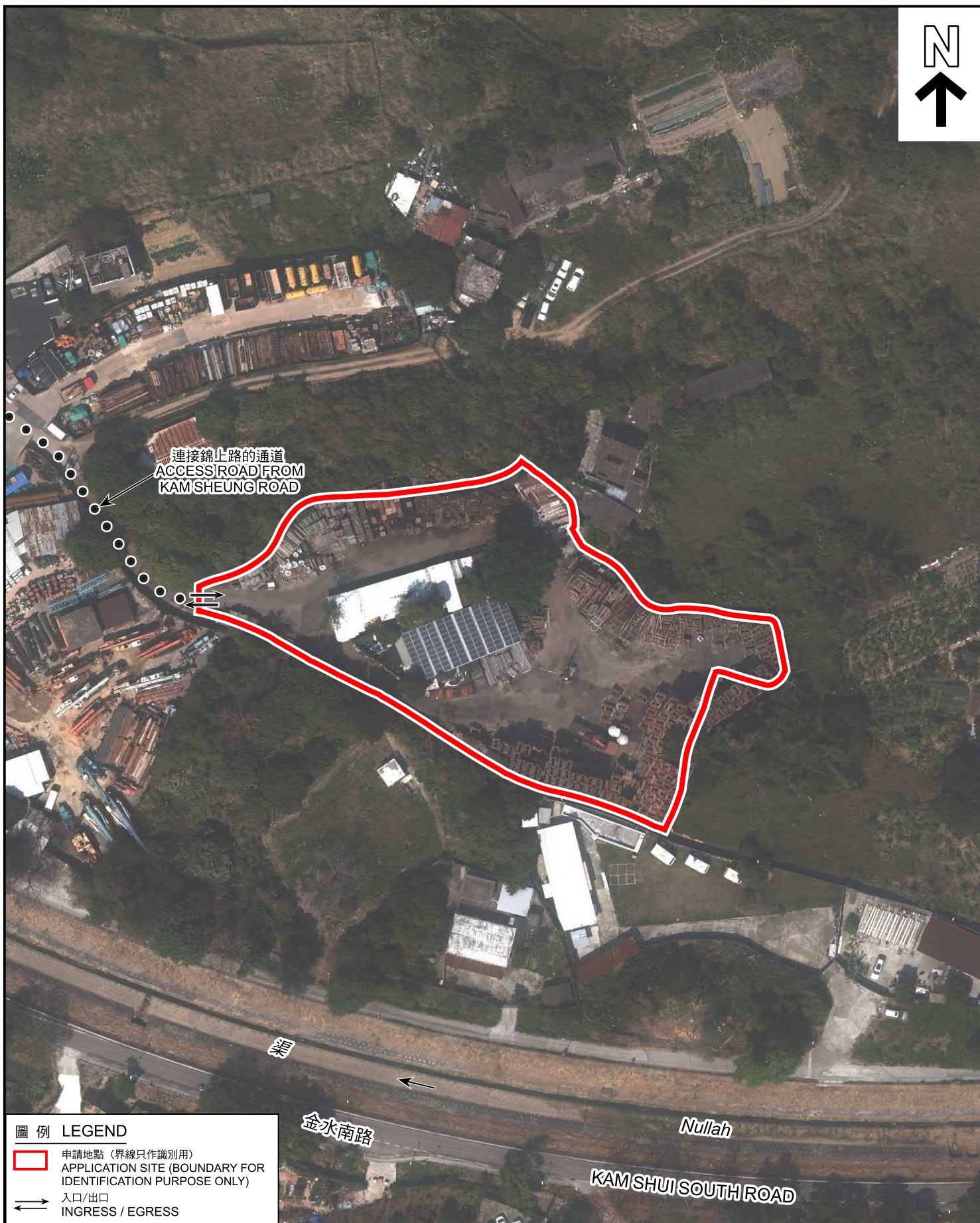
(資料來源：申請人於 23.8.2024 呈交的資料)  
 (Source: Applicant's Submission of 23.8.2024)

參考編號  
 REFERENCE No.  
 A/YL-SK/384

繪圖 DRAWING  
 A-3







#### 圖例 LEGEND

-  申請地點 (界線只作識別用)  
APPLICATION SITE (BOUNDARY FOR IDENTIFICATION PURPOSE ONLY)
-  入口/出口  
INGRESS / EGRESS

本摘要圖於2024年8月15日擬備，  
所根據的資料為地政總署於2023年2月27日  
拍得的航攝照片編號 E189359C  
EXTRACT PLAN PREPARED ON 15.8.2024  
BASED ON AERIAL PHOTO No.  
E189359C TAKEN ON 27.2.2023  
BY LANDS DEPARTMENT

#### 航攝照片 AERIAL PHOTO

臨時露天存放建築物料連附屬設施 (為期3年) 及相關的填土工程  
元朗錦田丈量約份第106約地段第1080號(部分)  
TEMPORARY OPEN STORAGE OF CONSTRUCTION MATERIALS WITH  
ANCILLARY FACILITIES FOR A PERIOD OF 3 YEARS AND  
ASSOCIATED FILLING OF LAND  
LOT 1080 (PART) IN D.D.106, KAM TIN, YUEN LONG

規劃署  
PLANNING  
DEPARTMENT



參考編號  
REFERENCE No.  
A/YL-SK/384

圖 PLAN  
A-3

1



2



3



申請地點界線只作識別用  
APPLICATION SITE BOUNDARY FOR IDENTIFICATION PURPOSE ONLY

### 實地照片 SITE PHOTOS

臨時露天存放建築物料連附屬設施（為期3年）及相關的填土工程  
元朗錦田丈量約份第106約地段第1080號（部分）  
TEMPORARY OPEN STORAGE OF CONSTRUCTION MATERIALS WITH  
ANCILLARY FACILITIES FOR A PERIOD OF 3 YEARS AND  
ASSOCIATED FILLING OF LAND  
LOT 1080 (PART) IN D.D.106, KAM TIN, YUEN LONG

規劃署  
PLANNING  
DEPARTMENT



參考編號  
REFERENCE No.  
A/YL-SK/384

圖 PLAN  
A-4a

本圖於2024年8月15日擬備，所根據的資料為攝於2024年7月26日的實地照片  
PLAN PREPARED ON 15.8.2024  
BASED ON SITE PHOTOS  
TAKEN ON 26.7.2024

4



5



6



7



申請地點界線只作識別用  
APPLICATION SITE BOUNDARY FOR IDENTIFICATION PURPOSE ONLY

### 實地照片 SITE PHOTOS

臨時露天存放建築物料連附屬設施（為期3年）及相關的填土工程  
元朗錦田丈量約份第106約地段第1080號（部分）  
TEMPORARY OPEN STORAGE OF CONSTRUCTION MATERIALS WITH  
ANCILLARY FACILITIES FOR A PERIOD OF 3 YEARS AND  
ASSOCIATED FILLING OF LAND  
LOT 1080 (PART) IN D.D.106, KAM TIN, YUEN LONG

規劃署  
PLANNING  
DEPARTMENT



參考編號  
REFERENCE No.  
A/YL-SK/384

圖 PLAN  
A-4b

本圖於2024年8月15日擬備，所根據的資料為攝於2024年7月26日的實地照片  
PLAN PREPARED ON 15.8.2024  
BASED ON SITE PHOTOS  
TAKEN ON 26.7.2024