

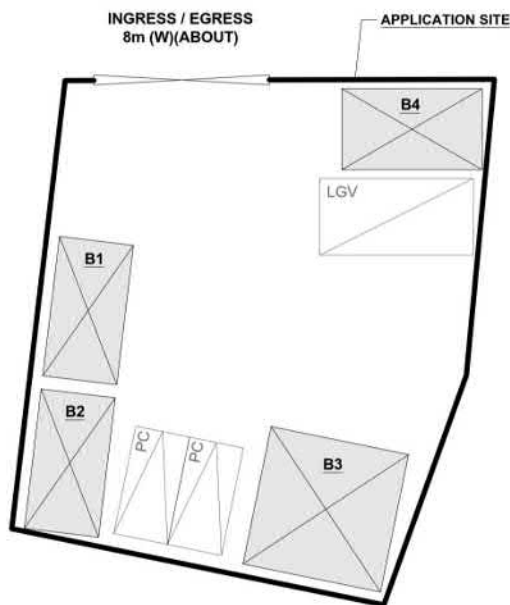
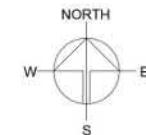
DEVELOPMENT PARAMETERS

APPLICATION SITE AREA	: 431m ²	(ABOUT)
COVERED AREA	: 234m ²	(ABOUT)
UNCOVERED AREA	: 197m ²	(ABOUT)
PLOT RATIO	: 0.5	(ABOUT)
SITE COVERAGE	: 54%	(ABOUT)
NO. OF STRUCTURE	: 6	
DOMESTIC GFA	: NOT APPLICABLE	
NON-DOMESTIC GFA	: 234m ²	(ABOUT)
TOTAL GFA	: 234m ²	(ABOUT)
BUILDING HEIGHT	: 3.3m - 3.8m	(ABOUT)
NO. OF STOREY	: 1	

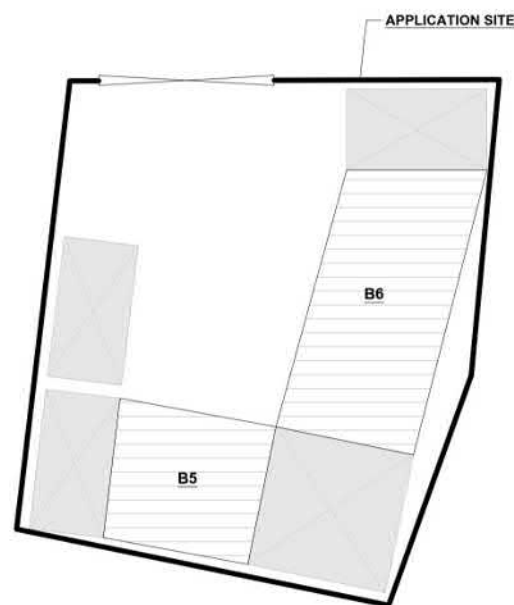
STRUCTURE	USE	COVERED AREA	GFA	BUILDING HEIGHT
B1	SHOP & SERVICES (SOLAR PANEL)	22m ² (ABOUT)	22m ² (ABOUT)	3.5m (ABOUT)(1-STOREY)
B2	SHOP & SERVICES (SOLAR PANEL)	22m ² (ABOUT)	22m ² (ABOUT)	3.5m (ABOUT)(1-STOREY)
B3	SITE OFFICE AND MEETING ROOM	41m ² (ABOUT)	41m ² (ABOUT)	3.8m (ABOUT)(1-STOREY)
B4	SITE OFFICE AND MEETING ROOM	24m ² (ABOUT)	24m ² (ABOUT)	3.3m (ABOUT)(1-STOREY)
B5	RAIN SHELTER (CANOPY)*	45m ² (ABOUT)	45m ² (ABOUT)	3.5m (ABOUT)(1-STOREY)
B6	RAIN SHELTER (CANOPY)* AND STORAGE OF GOODS	80m ² (ABOUT)	80m ² (ABOUT)	3.5m (ABOUT)(1-STOREY)
TOTAL		234m ² (ABOUT)	234m ² (ABOUT)	

STRUCTURES B1 TO B4 ARE CONTAINER CONVERTED STRUCTURE WITH SOLAR PANELS FITTED AT THE ROOF[#]
STRUCTURES B5 AND B6 ARE SHED STRUCTURES WITH SOLAR PANELS FITTER AT THE ROOF

*ELECTRICITY GENERATED BY THE SOLAR PANELS ON THE ROOF OF STRUCTURES B1 TO B4 ARE FOR THE USE OF THE PROPOSED DEVELOPMENT ONLY



ENCLOSED STRUCTURES



SHED STRUCTURES

PARKING AND LOADING / UNLOADING PROVISIONS

NO. OF PRIVATE CAR PARKING SPACE	: 2
DIMENSION OF PARKING SPACE	: 2.5m (W) X 5m (L)
NO. OF L/U SPACE FOR LIGHT GOODS VEHICLE	: 1
DIMENSION OF L/U SPACE	: 3.5m (W) X 7m (L)

LEGEND

	APPLICATION SITE
	STRUCTURE (ENCLOSED)
	STRUCTURE (CANOPY)
	PARKING SPACE (PRIVATE CAR)
	L/U SPACE (LIGHT GOODS VEHICLE)
	INGRESS / EGRESS

PLANNING CONSULTANT



PROJECT

TEMPORARY SHOP AND SERVICES FOR A PERIOD OF 5 YEARS AND ASSOCIATED FILLING OF LAND

SITE LOCATION

LOT 591 RP (PART) IN D.D. 112, SHEK KONG, YUEN LONG, NEW TERRITORIES

SCALE

1:500 @ A4

DRAWN BY

MN

DATE

28.10.2024

CHECKED BY

DATE

APPROVED BY

DATE

DWG. TITLE

LAYOUT PLAN

DWG NO.

PLAN 4

VER.

001

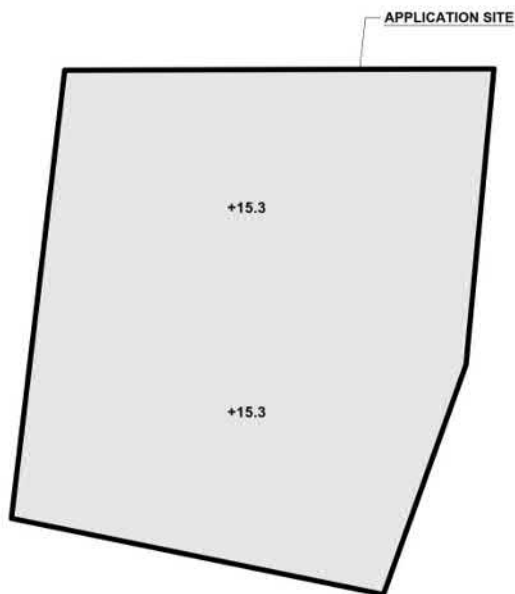
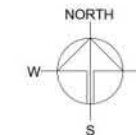
(摘錄自申請人於 8.1.2025 呈交的申請書)
(Extract from Applicant's Submission of 8.1.2025)

參考編號
REFERENCE No.
A/YL-SK/405

繪圖
DRAWING
A - 1

EXISTING CONDITION OF THE APPLICATION SITE

APPLICATION SITE AREA	: 431 m ²	(ABOUT)
COVERED BY STRUCTURE	: 234 m ²	(ABOUT)
EXISTING FILLING AREA	: 431 m ²	(ABOUT)
DEPTH OF LAND FILLING	: 0.1 m	(ABOUT)
EXISTING SITE LEVEL	: +15.3 mPD	(ABOUT)
MATERIAL OF LAND FILLING	: CONCRETE	
USE	: SITE FORMATION OF STRUCTURES AND CIRCULATION AREA	



PLANNING CONSULTANT



PROJECT

TEMPORARY SHOP AND SERVICES (SOLAR POWER SYSTEM SHOP) FOR A PERIOD OF 5 YEARS AND ASSOCIATED FILLING OF LAND

SITE LOCATION

LOT 591 RP (PART) IN D.D. 112, SHEK KONG, YUEN LONG, NEW TERRITORIES

SCALE

1:200 @ A1

DRAWN BY

MN

DATE

28.10.2024

REVIEWED BY

DATE

APPROVED BY

DATE

DWG. TITLE

FILLING OF LAND AREA

DWG. NO.

PLAN 5

VER.

001

LEGEND

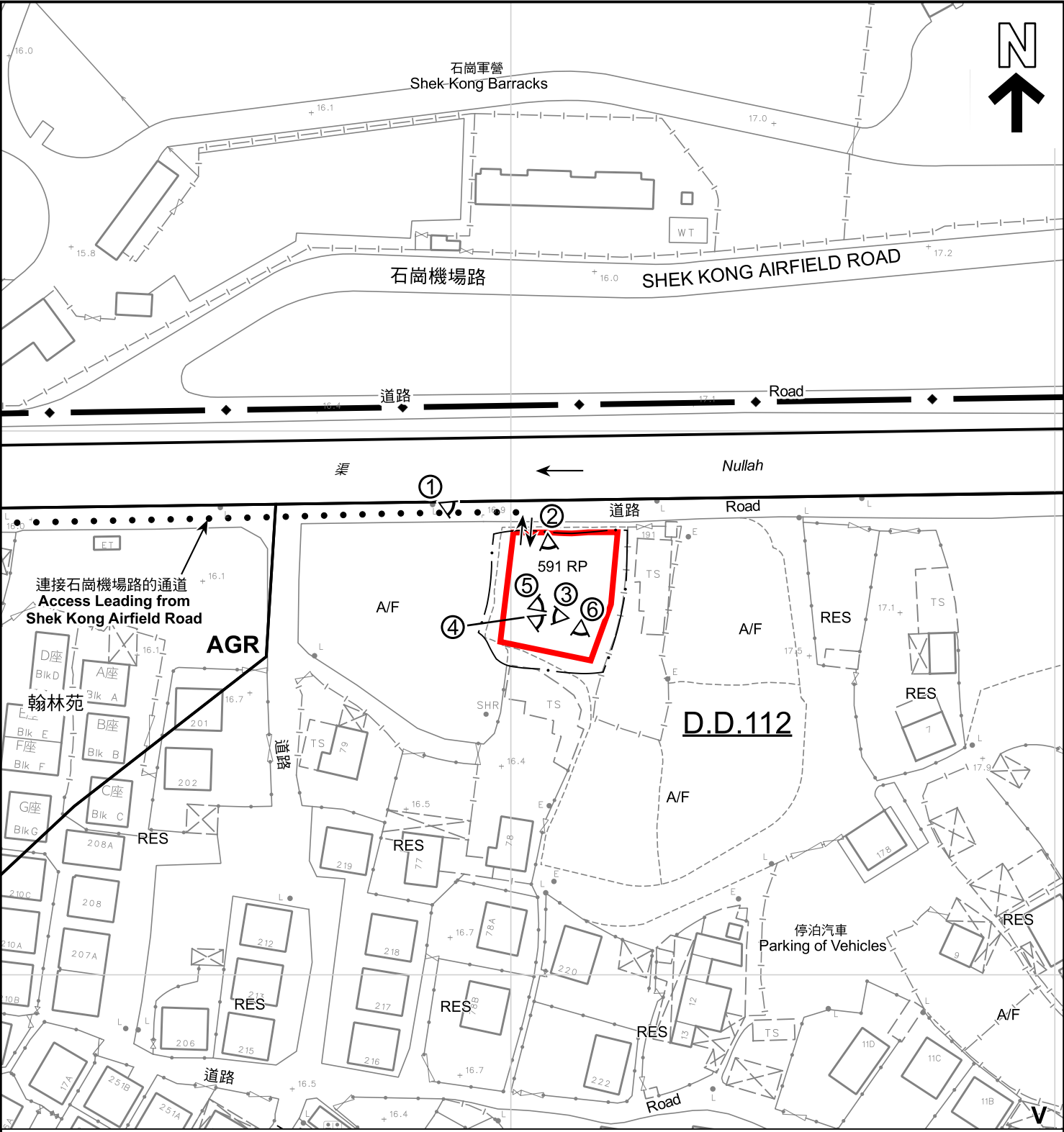
	APPLICATION SITE
	LAND FILLING AREA
	PROPOSED SITE LEVEL

*SITE LEVELS ARE FOR ILLUSTRATION PURPOSE ONLY

(摘錄自申請人於 17. 1. 2025 呈交的申請書)
(Extract from Applicant's
Submission of 17.1.2025)

參考編號
REFERENCE No.
A/YL-SK/405

繪圖
DRAWING
A - 2



圖例 LEGEND

- 申請地點 (界線只作識別用)
APPLICATION SITE (BOUNDARY FOR IDENTIFICATION PURPOSE ONLY)
- 鄉村式發展
VILLAGE TYPE DEVELOPMENT
- 農業
AGRICULTURE
- 休耕農地
FALLOW AGRICULTURAL LAND
- 住用構築物
RESIDENTIAL STRUCTURES
- 入口/出口
INGRESS / EGRESS
- 實地照片的觀景點
VIEWING POINT OF SITE PHOTO

註釋 Note :
2025年1月21日勘测的土地用途
Land uses shown on this plan are in accordance with the land use survey conducted by the Planning Department on 21.1.2025

本摘要圖於2025年2月6日擬備，
所根據的資料為測量圖編號6-NE-13D
EXTRACT PLAN PREPARED ON
6.2.2025 BASED ON SURVEY SHEET
No. 6-NE-13D

平面圖 SITE PLAN

臨時商店及服務行業（太陽能發電系統）（為期5年）及相關的填土工程
新界元朗石崗丈量約份第112約地段第591號餘段（部分）
TEMPORARY SHOP AND SERVICES (SOLAR POWER SYSTEM SHOP)
FOR A PERIOD OF 5 YEARS AND ASSOCIATED FILLING OF LAND
LOT 591 RP (PART) IN D.D.112, SHEK KONG,
YUEN LONG, NEW TERRITORIES

SCALE 1 : 1 000 比例尺

米 20 0 20 40 米
METRES


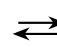
規劃署
PLANNING
DEPARTMENT

參考編號
REFERENCE No.
A/YL-SK/405

圖 PLAN
A-2



圖例 LEGEND

-  申請地點（界線只作識別用）
APPLICATION SITE
(BOUNDARY FOR IDENTIFICATION
PURPOSE ONLY)
-  入口/出口
INGRESS / EGRESS

航攝照片 AERIAL PHOTO

本摘要圖於2025年2月7日擬備，所根據的資料為地政總署於2023年10月5日拍得的航攝照片編號E209497C

EXTRACT PLAN PREPARED ON
7.2.2025 BASED ON AERIAL PHOTO No.
E209497C TAKEN ON 5.10.2023 BY
LANDS DEPARTMENT

臨時商店及服務行業（太陽能發電系統）（為期5年）及相關的填土工程
新界元朗石崗丈量約份第112約地段第591號餘段（部分）
TEMPORARY SHOP AND SERVICES (SOLAR POWER SYSTEM SHOP)
FOR A PERIOD OF 5 YEARS AND ASSOCIATED FILLING OF LAND
LOT 591 RP (PART) IN D.D.112, SHEK KONG,
YUEN LONG, NEW TERRITORIES

規劃署
PLANNING
DEPARTMENT



參考編號
REFERENCE No.
A/YL-SK/405

圖 PLAN
A-3



申請地點界線只作識別用
APPLICATION SITE BOUNDARY FOR IDENTIFICATION PURPOSE ONLY

實地照片 SITE PHOTOS

本圖於2025年2月6日擬備，所根據的資料為攝於2025年1月21日的實地照片

PLAN PREPARED ON 6.2.2025
BASED ON SITE PHOTOS
TAKEN ON 21.1.2025

臨時商店及服務行業（太陽能發電系統）（為期5年）及相關的填土工程
新界元朗石崗丈量約份第112約地段第591號餘段（部分）
TEMPORARY SHOP AND SERVICES (SOLAR POWER SYSTEM SHOP)
FOR A PERIOD OF 5 YEARS AND ASSOCIATED FILLING OF LAND
LOT 591 RP (PART) IN D.D.112, SHEK KONG,
YUEN LONG, NEW TERRITORIES

規劃署
PLANNING
DEPARTMENT



參考編號
REFERENCE No.
A/YL-SK/405

圖 PLAN
A-4a

4



5



6



申請地點界線只作識別用
APPLICATION SITE BOUNDARY FOR IDENTIFICATION PURPOSE ONLY

實地照片 SITE PHOTOS

臨時商店及服務行業（太陽能發電系統）（為期5年）及相關的填土工程
新界元朗石崗丈量約份第112約地段第591號餘段（部分）
TEMPORARY SHOP AND SERVICES (SOLAR POWER SYSTEM SHOP)
FOR A PERIOD OF 5 YEARS AND ASSOCIATED FILLING OF LAND
LOT 591 RP (PART) IN D.D.112, SHEK KONG,
YUEN LONG, NEW TERRITORIES

規劃署
PLANNING
DEPARTMENT



參考編號
REFERENCE No.
A/YL-SK/405

圖 PLAN
A-4b

本圖於2025年2月6日擬備，所根據的資料為攝於2025年1月21日的實地照片

PLAN PREPARED ON 6.2.2025
BASED ON SITE PHOTOS
TAKEN ON 21.1.2025