



LEGEND:

- Application Site (Area = about 70,679 sq.m.)
- Parking Spaces for Container Vehicles (3.5m x 16m) (147 nos.)
- Parking Spaces for Container Trailers (3.5m x 12.5m) (108 nos.)
- Parking Spaces for Medium Goods Vehicles (3.5m x 11m) (12 nos.)
- Parking Spaces for Staff/Visitors (2.5m x 5m) (22 nos.)
- Temporary Structures
- Storage of Containers
- Open Storage of Construction Materials



Top Bright Consultants Ltd.

Drawing No. :TB/20/668/05

Layout Plan

Lot 769RP(Part) in DD99,
San Tin, Yuen Long, N.T.

FIGURE 5

FOR IDENTIFICATION PURPOSE

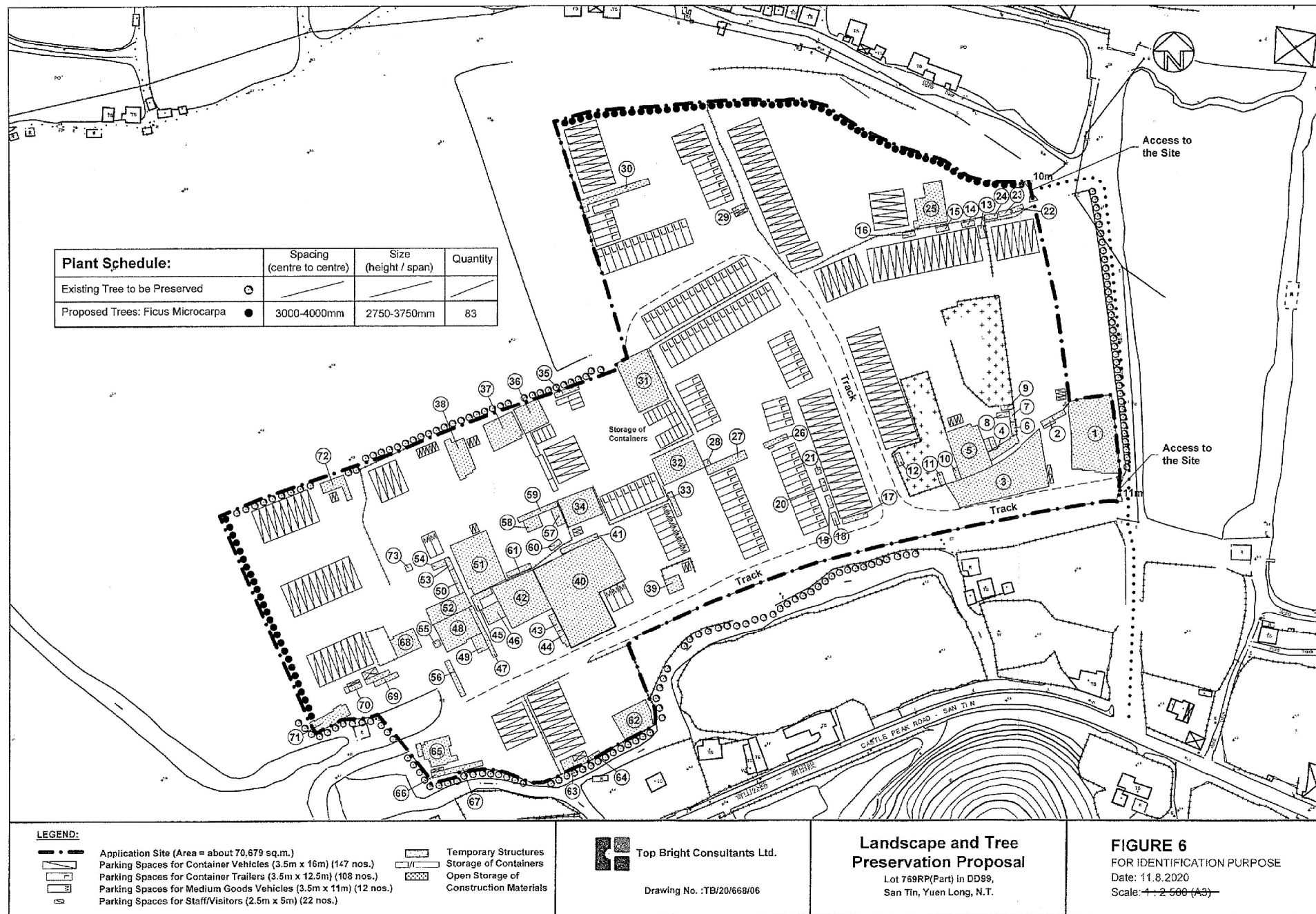
Date: 11.8.2020

Scale: 1:2,500 (A3)

(摘錄自申請人於 18.9.2020 呈交的申請書)
(Extract from Applicant's
Submission of 18.9.2020)

參考編號
REFERENCE No.
A/YL-ST/578

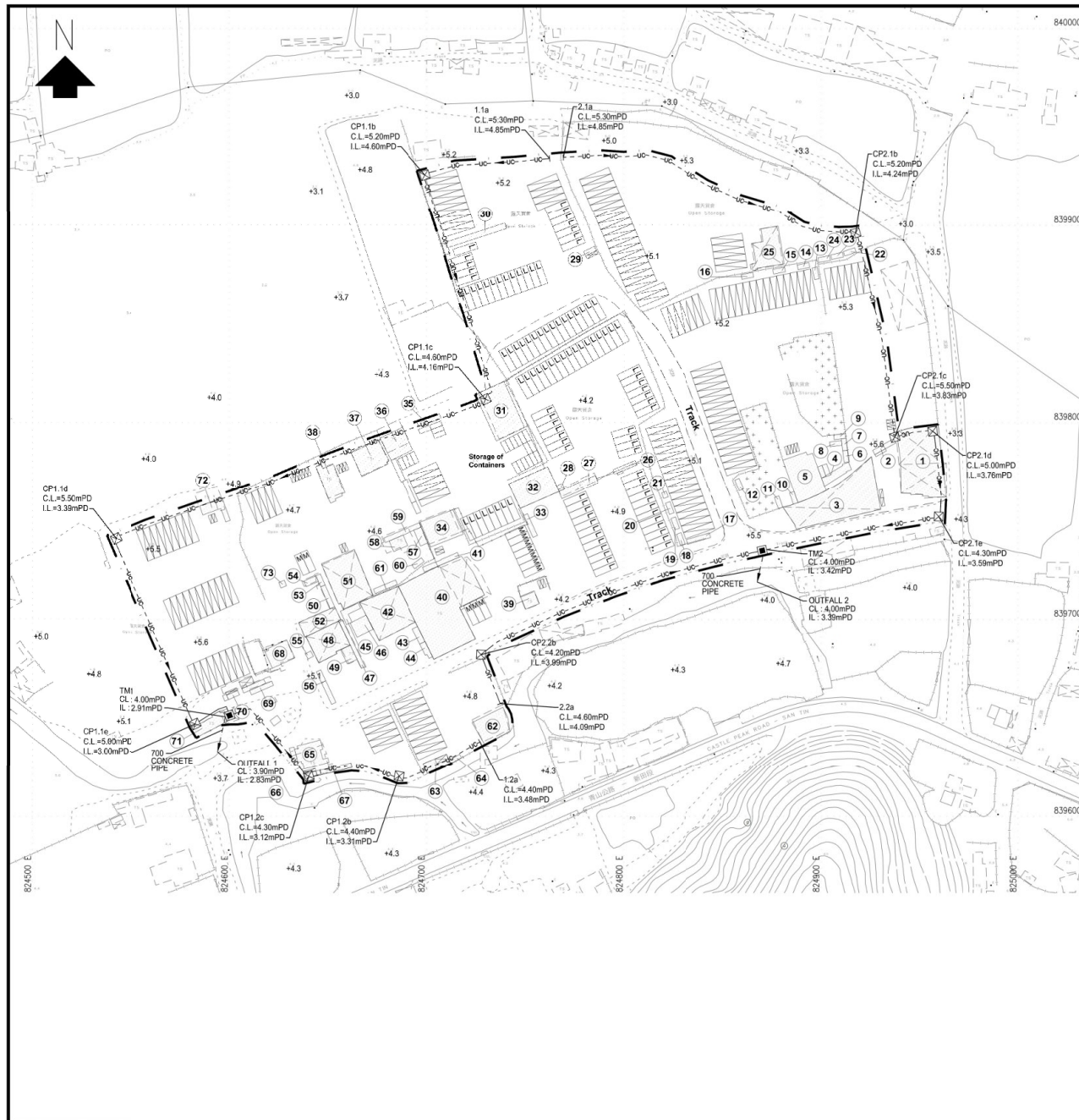
繪圖 DRAWING
A-1



(摘錄自申請人於 18.9.2020 呈交的申請書)
(Extract from Applicant's
Submission of 18.9.2020)

參考編號
REFERENCE No.
A/YL-ST/578

繪圖 DRAWING
A-2

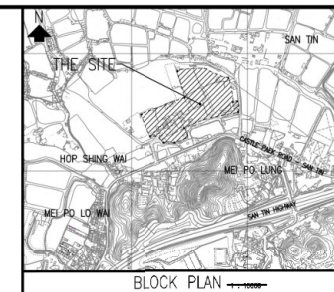


LEGEND:

- SITE BOUNDARY LINE
- - - 450 UC (SLOPE 1 IN 130) SURFACE CHANNEL WITH COVER
- NEW TRUNKAL MAN-POLE WITH DESILTING TRAP
- - - 700mm STORMWATER DRAINING
- ⊠ PROPOSED CATC-1 PIT WITH COVER

NOTES:

- ALL LEVELS SHOWN ARE IN METRES ABOVE THE PRINCIPAL DATUM.
- LOCATIONS OF EXISTING MANHOLES AND DRAINS ARE INDICATIVE ONLY. THE EXACT LOCATIONS SHALL BE VERIFIED ON SITE.
- THE EXACT LOCATIONS OF THE PROPOSED MANHOLES SHALL BE AGREED WITH THE ENGINEER ON SITE.
- PRECAST CONCRETE PIPES AND FITTINGS SHALL COMPLY WITH BS EN 1916 AND BS 5911-1, AND SHALL HAVE FLEXIBLE SPIGOT AND SOCKET JOINTS.
- ALL GROUND LEVELS SHOWN IN THIS DRAWING ARE REFERENCE ONLY.
- ALL MANHOLE COVERS SHOULD BE HEAVY DUTY.
- ALL REINFORCEMENT TO B.S. 4449. REINFORCEMENT SHALL BE HIGH-YIELD STEEL BARS AND (GRADE 460) WITH YIELD STRESS 460 MPa. ALL CONCRETE SHALL COMPLY WITH BS 5329:1999.
- ALL REINFORCEMENT CONCRETE WORKS SHALL COMPLY WITH THE HONG KONG BUILDING (CONSTRUCTION) REGULATION 1996.
- UNLESS SPECIFIED OTHERWISE, CONCRETE GRADES ARE: - STRUCTURAL CONCRETE 400/20. - BUILDING CONCRETE 100/20.
- UNLESS SPECIFIED OTHERWISE, CONCRETE SURFACE FINISHES ARE: - FORMED: - EXTERNAL F1 INTERNAL F4 UNFORMED: - EXTERNAL U1 INTERNAL U5
- MOVEMENT JOINT IS NORMAL TO THE FLOW DIRECTION.
- DOWEL BARS AT MOVEMENT JOINT SHALL BE SAW-CUT PERPENDICULAR TO BAR AXIS AND INSTALLED NORMAL TO THE MOVEMENT JOINT.
- CONCRETE COVER TO MAIN REINFORCEMENT TO BE 50mm (MIN.).
- MINIMUM LAP LENGTH SHOULD BE 48d OR AS DETERMINED BY THE ENGINEER.
- LEVELLING STONE AND ROCK FILL LAYERS ARE OPTIONAL AND DETERMINED BY THE ENGINEER.
- INTERFACE BETWEEN OLD AND NEW CONCRETE SHOULD BE ROUGHENED.
- REACTIVE ALKALI OF CONCRETE EXPRESSED AS THE EQUIVALENT SODIUM CHLORIDE PER CUBIC METRE OF CONCRETE SHOULD NOT EXCEED 3.0kg AS DETERMINATION IN ACCORDANCE WITH SPECIFICATION ITEMS GIVEN IN APPENDIX A OF "PAP 186".
- CONCRETE PIPE WITH COVER LESS THAN 900mm IN ROAD OR 450mm IN FOOTPATH SHOULD BE CONCRETE SURROUNDED.
- ALL PIPES SHALL BE WITH CONCRETE SURROUND TYPE II.
- ALL WORKS, WHERE APPLICABLE, SHALL COMPLY WITH GENERAL SPECIFICATION FOR CIVIL ENGINEERING WORKS, 2006 EDITION.



B.D. REF.	
F.S.D. REF.	
Do not scale drawing.	
Figured dimensions are to be taken in preference to scaled dimensions in all cases.	
Read this drawing in conjunction with general constructional plans, structural plans and other related drawings. Before commencing work, the full extent and exact nature of the works shown on this drawing shall be ascertained and all dimensions verified with the measurements. Any discrepancy shall be brought immediately to the notice of Ho Tin & Associates Consulting Engineers Limited.	
All prints and copies of this drawing are the property of Ho Tin & Associates Consulting Engineers Limited and shall be returned on completion of work.	
Copyright of this drawing is reserved by Ho Tin & Associates Consulting Engineers Limited.	
REVISIONS	
PROJECT	OPEN STORAGE AT LOT 769R(PART) IN DD99 SAN TIN, YUEN LONG, N.T.
何田顧問工程師有限公司 HO TIN & ASSOCIATES CONSULTING ENGINEERS LIMITED	
DATE PRINTED	
JOB NO.	HT20088
SCALE	1:1000
DRAWN	A. CHENG
CHECKED	FRED LUI
APPROVED	K. C. LEE
TITLE	PROPOSED STORMWATER DRAINAGE PLAN
DRAWING NO.	HT 20088 / A / DD / 001

(摘錄自申請人於 29. 10. 2020 呈交的進一步資料)
(Extract from Applicant's Further
Information Submitted on 29.10.2020)

參考編號
REFERENCE No.
A/YL-ST/578

繪圖 DRAWING
A-3

Details of Structures:

Structure No.	Uses	No. of Storey	Height (m)	Covered Area (m ²)	Floor Area (m ²)
1	Tyre Repair Workshop with Site Office and Storage	1-2	5.5	770	770 + 30 = 800
2	Storage and Site Office	2	5.0	37	37 + 30 = 67
3	Storage of Trailer Parts with Site Office, Toilet	1	5.5	812	812
4	Site Office and Toilet	1	3.0	66	96
5	Site Office and Storage	1-2	6.0	347	347 + 120 = 467
6	Site Office	1	2.5	15	15
7	Site Office	1	2.5	15	15
8	Site Office	2	5.0	15	15 x 2 = 30
9	Storage	1	2.5	15	15
10	Storage	1	2.5	15	15
11	Storage	1	2.5	15	15
12	Storage	1	2.5	15	15
13	Site Office	2	5.0	15	15 x 2 = 30
14	Site Office	1	2.5	15	15
15	Storage	1	2.5	15	15
16	Site Office	2	5.0	15	15 x 2 = 30
17	Site Office	1	2.5	30	30
18	Site Office	2	5.0	15	15 x 2 = 30
19	Site Office	1	2.5	15	15
20	Site Office	2	5.0	15	15 x 2 = 30
21	Toilet	1	3.0	7	7
22	Covered Parking Space for Staff	1	2.5	15	15
23	Site Office	1	2.5	15	15
24	Site Office	1	2.5	15	15
25	Site Office and Storage	1-2	5.5	245	245 + 60 = 305
26	Site Office and Water Tank	1-2	2.5-5.0	33	33 + 30 = 63
27	Site Office	2	5.0	79	30 + 79 = 109
28	Toilet	1	3.0	9	9
29	Site Office	1	2.5	26	26
30	Site Office and Storage	1-2	2.5-5.0	108	108 + 30 = 138
31	Site Office, Storage and Toilet	1-2	5.0-5.5	408	408 + 30 = 438
32	Site Office, Storage and Trailer Repair Area	1-2	5.0	294	294 + 60 = 354
33	Storage	2	5.0	30	30 + 30 = 60
34	Vehicle Repair Area	1	5.0-5.5	240	240
35	Storage	2	5.0	30	30
36	Site Office, Storage and Trailer Repair Area	1-2	5.0	159	159 + 75 = 234
37	Site Office, Storage and Tractor Repair Area	1-2	5.0	204	204 + 30 = 234
38	Site Office, Storage and Vehicle Repair Area	1-2	5.0	155	155 + 30 = 185
39	Parking of Private Vehicles	1	3.0	53	53
40	Warehouse and Site Office	1-2	5.0-5.5	1,279	1,279 + 210 = 1,489
41	Site Office and Storage	1-2	2.5-5.0	47	47 + 15 = 62
42	Site Office, Storage and Vehicle Repair Area	1-2	5.0-5.5	440	440 + 30 = 470
43	Site Office	2	5.0	26	26 + 26 = 52
44	Rain Shelter, Platform and Staircase	1-2	5.0	24	24 + 19 = 43
45	Site Office and Storage	1	2.5	44	44
46	Vehicle Repair Area	1	5.0	72	72
47	Storage	1	2.5	53	53
48	Site Office and Vehicle Repair Area	1-2	5.0	258	258 + 60 = 318
49	Vehicle Repair Area	1	4.5	43	43
50	Site Office and Storage	2	5.0	30	30 + 30 = 60
51	Warehouse and Site Office	1-2	5.0	449	449 + 15 = 464
52	Site Office and Tyre Repair Area	1	3.0	155	155
53	Site Office	2	5.0	15	15 + 15 = 30
54	Storage	1	2.5	21	21
55	Toilet	1	2.5	9	9
56	Storage	1	2.5	45	45
57	Storage	1	3.4	35	35
58	Vehicle Repair Area	1	5.0	45	45
59	Storage	1	2.5	48	48
60	Storage	1	2.5	15	15



Top Bright Consultants Ltd.

Drawing No. :TB/20/668/05A

Details of Temporary Structures

Lot 769RP(Part) in DD99,
San Tin, Yuen Long, N.T.

FIGURE 5A

FOR IDENTIFICATION PURPOSE
Date: 11.8.2020

(摘錄自申請人於 18. 9. 2020 呈交的申請書)
(Extract from Applicant's
Submission of 18.9.2020)

參考編號
REFERENCE No.
A/YL-ST/578

繪圖 DRAWING
A-4

Details of Structures:

Structure No.	Uses	No. of Storey	Height (m)	Covered Area (m ²)	Floor Area (m ²)
61	Storage	1	2.5-3.4	30	30
62	Site Office, Storage and Vehicle Repair Area	1	5.0-5.5	207	207
63	Site Office and Rain Shelter	1-2	5.0	71	71 + 45 = 116
64	Toilet	1	2.5	12	12
65	Storage, Pantry	1	2.5	172	172
66	Site Office and Toilet	1-2	5.0	24	24 + 15 = 39
67	Site Office	1	2.5	45	45
68	Site Office	1	3.5-5.0	123	123
69	Site Office	1	2.5	85	85
70	Site Office and Toilet	1-2	2.5-5.0	30	30 + 15 = 45
71	Staff Canteen	1	2.5	109	109
72	Site Office	2	5.0	76	76 + 45 = 121
73	Guard House	1	2.5	9	9



Top Bright Consultants Ltd.

Drawing No. :TB/20/668/05B

Details of Temporary Structures

Lot 769RP(Part) in DD99,
San Tin, Yuen Long, N.T.

FIGURE 5B

FOR IDENTIFICATION PURPOSE
Date: 11.8.2020

(摘錄自申請人於 18. 9. 2020 呈交的申請書)
(Extract from Applicant's
Submission of 18.9.2020)

參考編號

REFERENCE No.

A/YL-ST/578

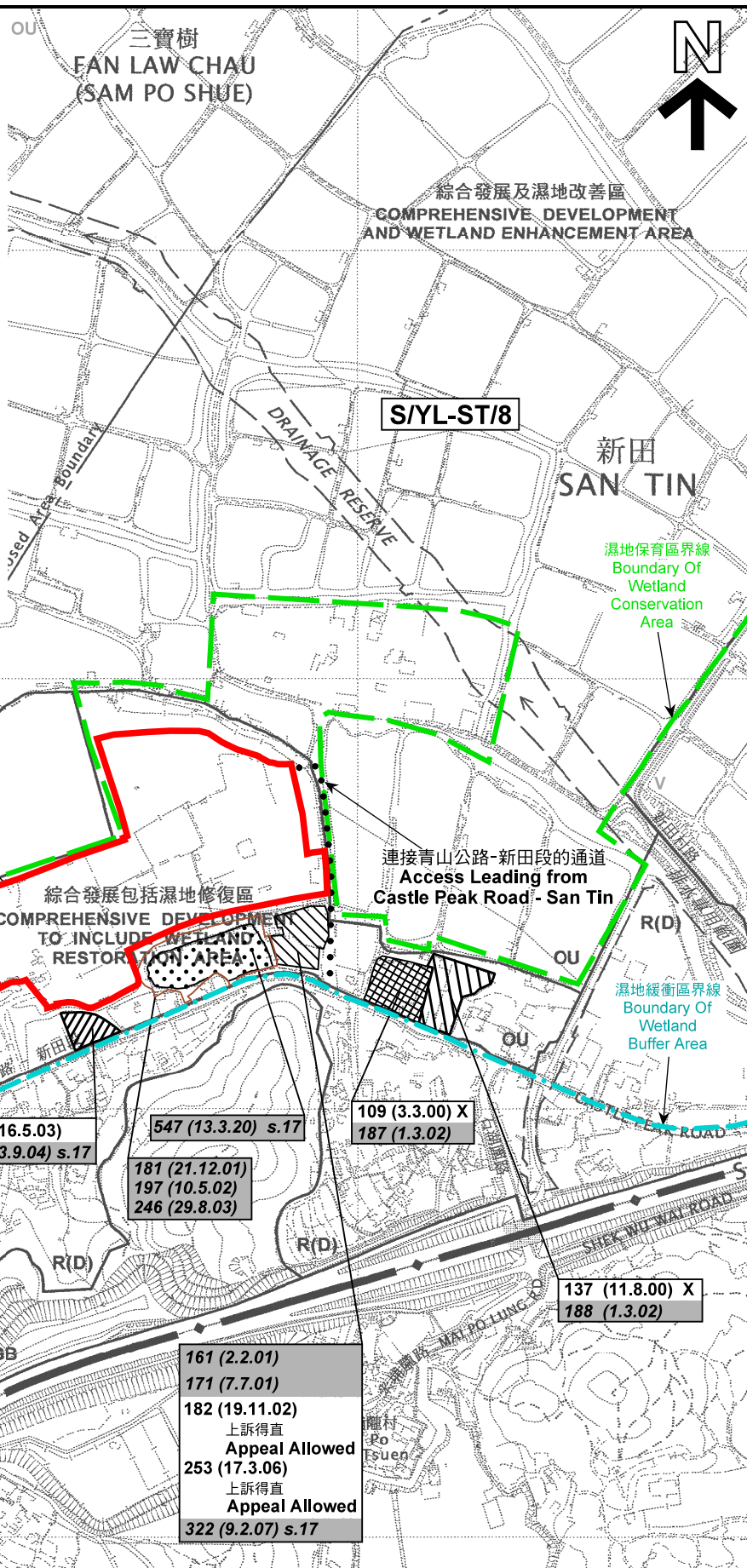
繪圖 DRAWING

A-5



要覽圖 KEY PLAN

SCALE 1 : 50 000 比例尺



圖例 LEGEND

- | | |
|-----------------------|--------------------------------|
| 243 (17.7.04) | 獲批准的申請
APPROVED APPLICATION |
| 244 (17.7.04) | 被拒絕的申請
REJECTED APPLICATION |
| 72 (10.9.99) X | 已撤銷
REVOKED |
| --- | 會議日期
DATE OF MEETING |
| --- | 申請編號
APPLICATION NUMBER |

申請地點界線只作識別用
APPLICATION SITE BOUNDARY
FOR IDENTIFICATION PURPOSE ONLY

位置圖及同類申請 LOCATION PLAN WITH SIMILAR APPLICATIONS

本摘要圖於2021年5月12日擬備，
所根據的資料為2006年12月5日
核准的分區計劃大綱圖編號 S/YL-ST/8
EXTRACT PLAN PREPARED ON 12.5.2021
BASED ON OUTLINE ZONING PLAN No.
S/YL-ST/8 APPROVED ON 5.12.2006

臨時貨櫃車及貨車停車場及
露天存放建築材料連附屬車胎及車輛維修處、
地盤辦公室、員工飯堂及存放用途（為期18個月）
元朗新田丈量約份第99約地段第769號餘段（部分）
TEMPORARY CONTAINER AND GOODS VEHICLE PARK AND
OPEN STORAGE OF CONSTRUCTION MATERIALS WITH ANCILLARY
TYRE AND VEHICLE REPAIR AREAS, SITE OFFICE, STAFF CANTEN
AND STORAGE USES FOR A PERIOD OF 18 MONTHS
LOT 769 RP (PART) IN D.D. 99, SAN TIN, YUEN LONG

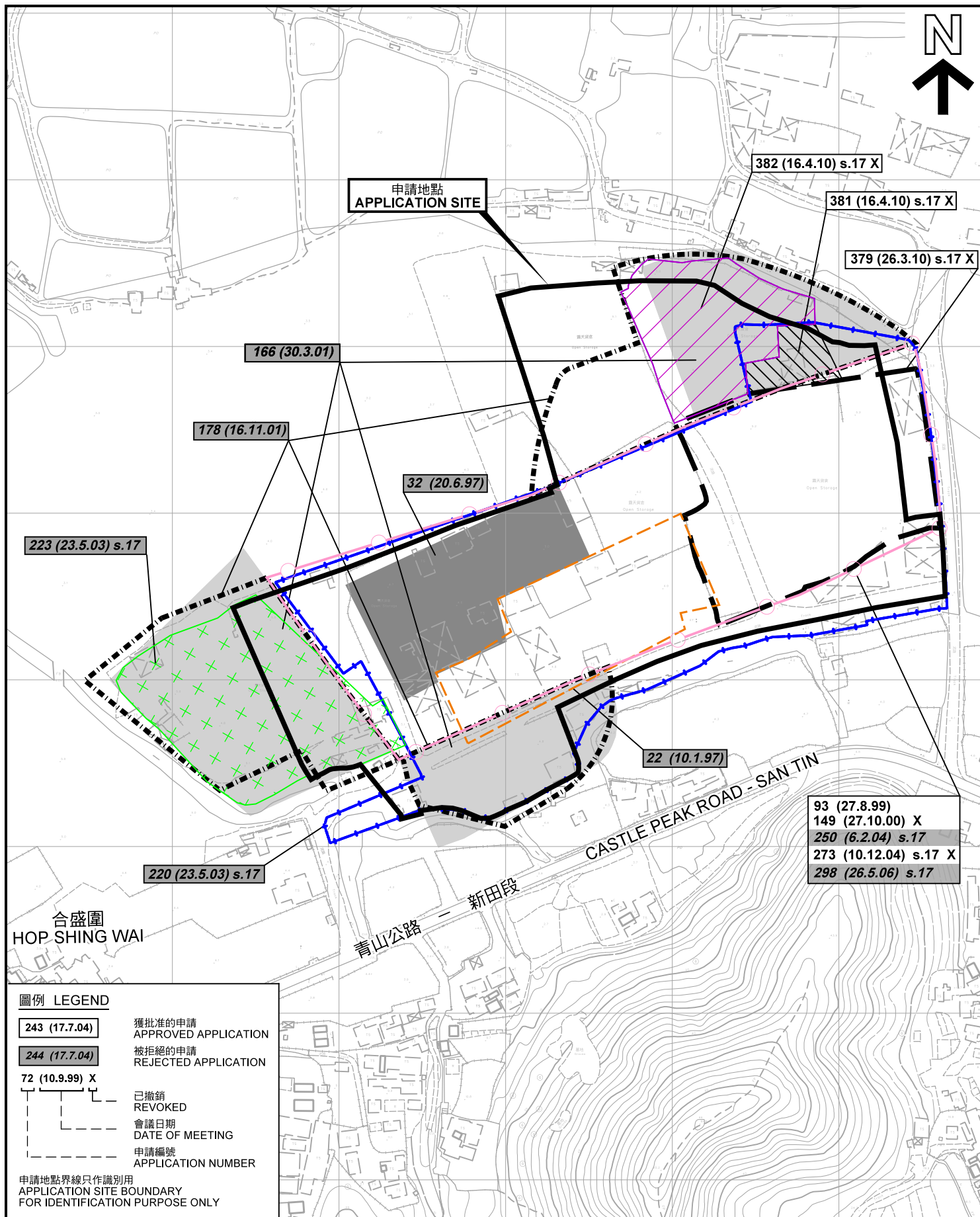
SCALE 1 : 7 500 比例尺
米 100 0 100 200 300 米
METRES

規劃署
PLANNING
DEPARTMENT



參考編號
REFERENCE No.
A/YL-ST/578

圖 PLAN
A-1a



先前申請圖 PREVIOUS APPLICATION PLAN

臨時貨櫃車及貨車停車場及
露天存放建築材料連附屬車胎及車輛維修處、
地盤辦公室、員工飯堂及存放用途 (為期18個月)
元朗新田丈量約份第99約地段第769號餘段(部分)
TEMPORARY CONTAINER AND GOODS VEHICLE PARK AND
OPEN STORAGE OF CONSTRUCTION MATERIALS WITH ANCILLARY
TYRE AND VEHICLE REPAIR AREAS, SITE OFFICE, STAFF CANTEEN
AND STORAGE USES FOR A PERIOD OF 18 MONTHS
LOT 769 RP (PART) IN D.D. 99, SAN TIN, YUEN LONG

SCALE 1 : 3 000 比例尺

米 60 0 60 120 米
METRES

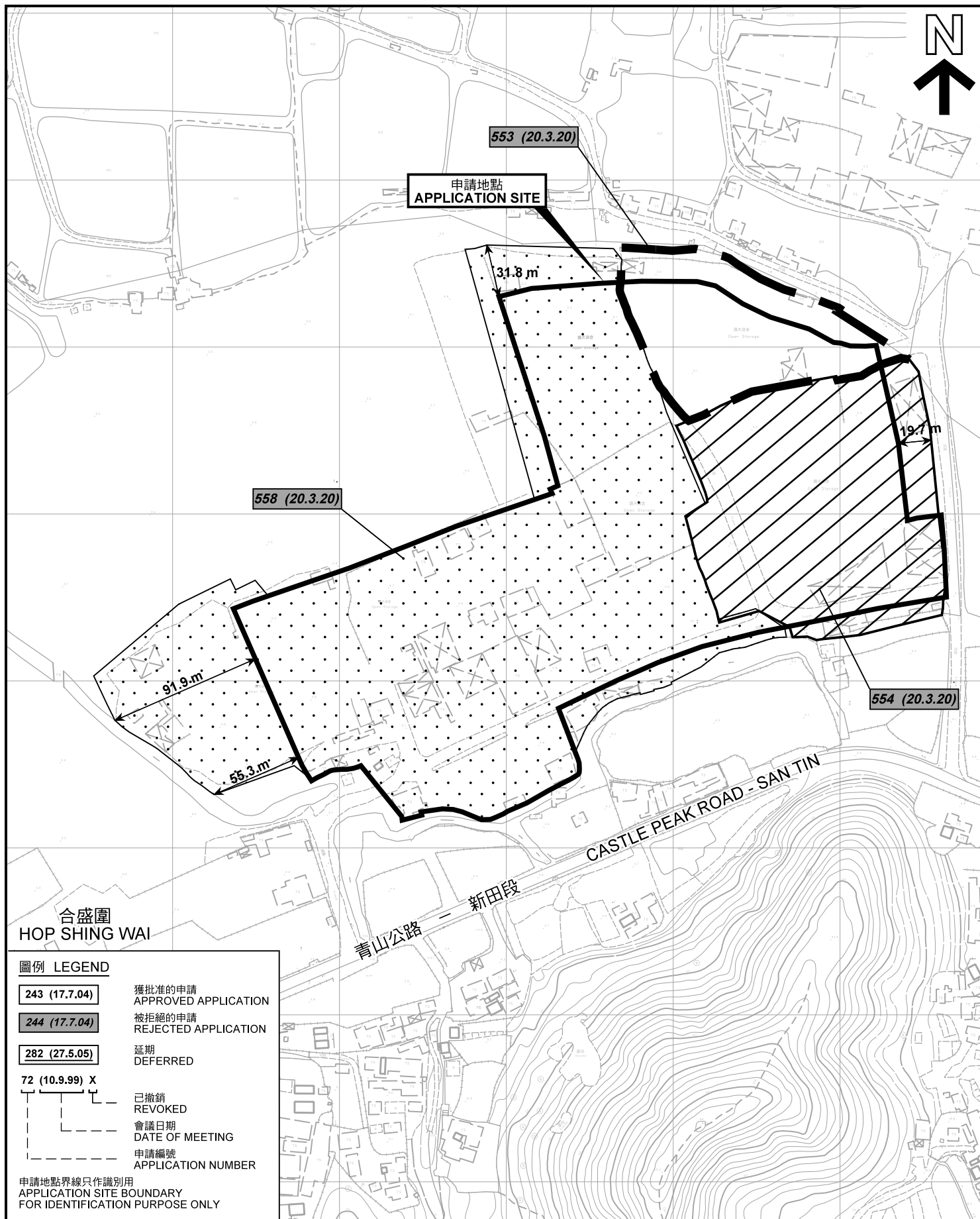
規劃署
PLANNING
DEPARTMENT



參考編號
REFERENCE No.
A/YL-ST/578

圖 PLAN
A-1b

本摘要圖於2021年5月12日擬備，
所根據的資料為測量圖編號
2-SE-7C、7D、12A 及 12B
EXTRACT PLAN PREPARED ON 12.5.2021
BASED ON SURVEY SHEETS No.
2-SE-7C, 7D, 12A & 12B



先前申請圖 PREVIOUS APPLICATION PLAN

臨時貨櫃車及貨車停車場及
露天存放建築材料連附屬車胎及車輛維修處、
地盤辦公室、員工飯堂及存放用途 (為期18個月)
元朗新田丈量約份第99約地段第769號餘段(部分)
TEMPORARY CONTAINER AND GOODS VEHICLE PARK AND
OPEN STORAGE OF CONSTRUCTION MATERIALS WITH ANCILLARY
TYRE AND VEHICLE REPAIR AREAS, SITE OFFICE, STAFF CANTEEN
AND STORAGE USES FOR A PERIOD OF 18 MONTHS
LOT 769 RP (PART) IN D.D. 99, SAN TIN, YUEN LONG

SCALE 1 : 3 000 比例尺

米 60 0 60 120 米
METRES

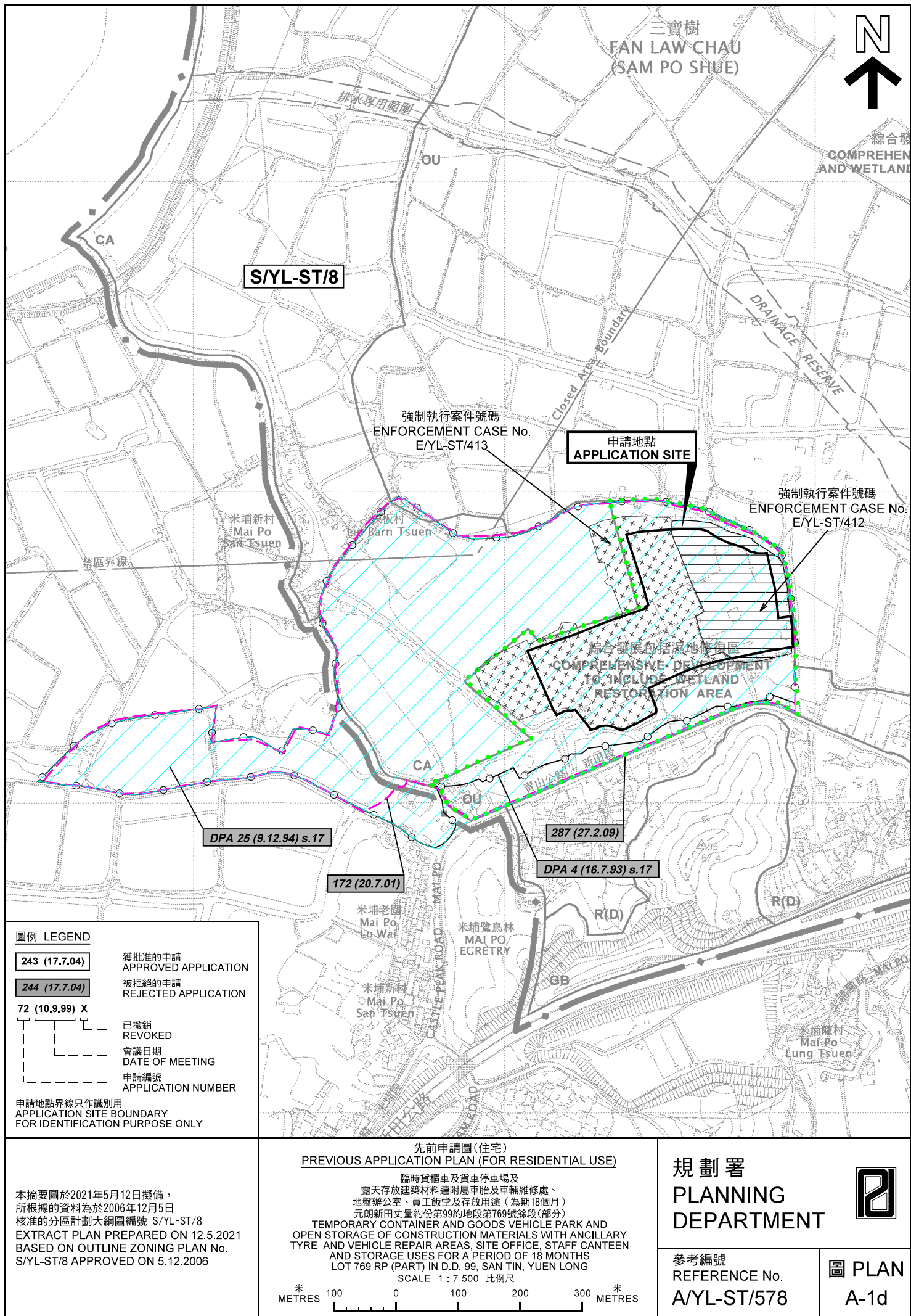
規劃署
PLANNING
DEPARTMENT

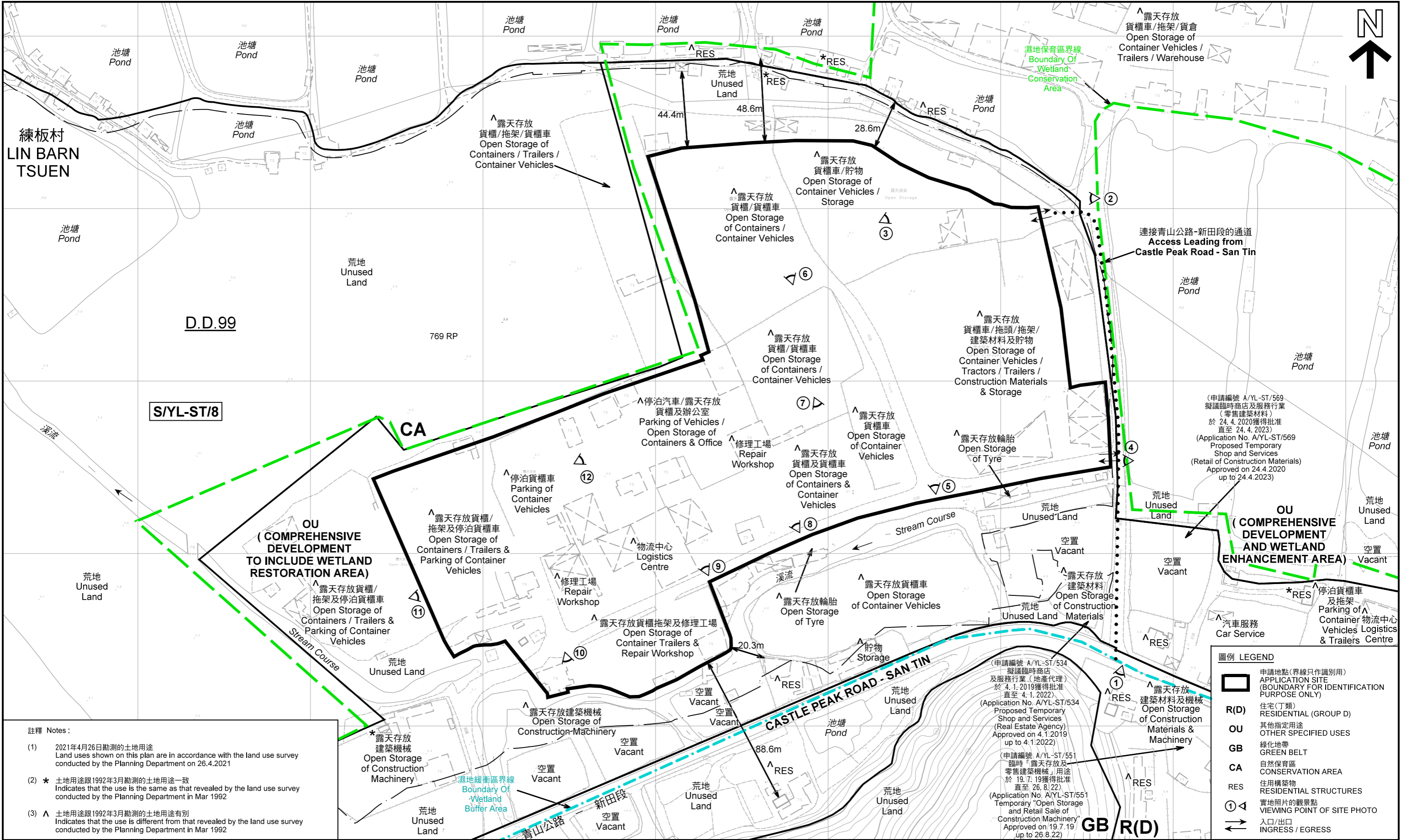


參考編號
REFERENCE No.
A/YL-ST/578

圖 PLAN
A-1c

本摘要圖於2021年5月12日擬備，
所根據的資料為測量圖編號
2-SE-7C、7D、12A 及 12B
EXTRACT PLAN PREPARED ON 12.5.2021
BASED ON SURVEY SHEETS No.
2-SE-7C, 7D, 12A & 12B





註釋 Notes:

- (1) 2021年4月26日勘測的土地用途
Land uses shown on this plan are in accordance with the land use survey conducted by the Planning Department on 26.4.2021
- (2) ★ 土地用途跟1992年3月勘測的土地用途一致
Indicates that the use is the same as that revealed by the land use survey conducted by the Planning Department in Mar 1992
- (3) ▲ 土地用途跟1992年3月勘測的土地用途有別
Indicates that the use is different from that revealed by the land use survey conducted by the Planning Department in Mar 1992

平面圖 SITE PLAN

臨時貨櫃車及貨車停車場及
露天存放建築材料連附屬車胎及車輛維修處、
地盤辦公室、員工飯堂及存放用途 (為期18個月)
元朗新田丈量約份第99約地段第769號餘段(部分)
TEMPORARY CONTAINER AND GOODS VEHICLE PARK AND
OPEN STORAGE OF CONSTRUCTION MATERIALS WITH ANCILLARY
TYRE AND VEHICLE REPAIR AREAS, SITE OFFICE, STAFF CANTEEN
AND STORAGE USES FOR A PERIOD OF 18 MONTHS
LOT 769 RP (PART) IN D.D. 99, SAN TIN, YUEN LONG

SCALE 1 : 2 000 比例尺

米 METRES 40 0 40 80 米 METRES

本摘要圖於2021年5月12日擬備，所根據的
資料為測量圖編號 2-SE-7C、2-SE-7D、
2-SE-12A 及 2-SE-12B
EXTRACT PLAN PREPARED ON 12.5.2021
BASED ON SURVEY SHEETS No.
2-SE-7C, 2-SE-7D, 2-SE-12A & 2-SE-12B

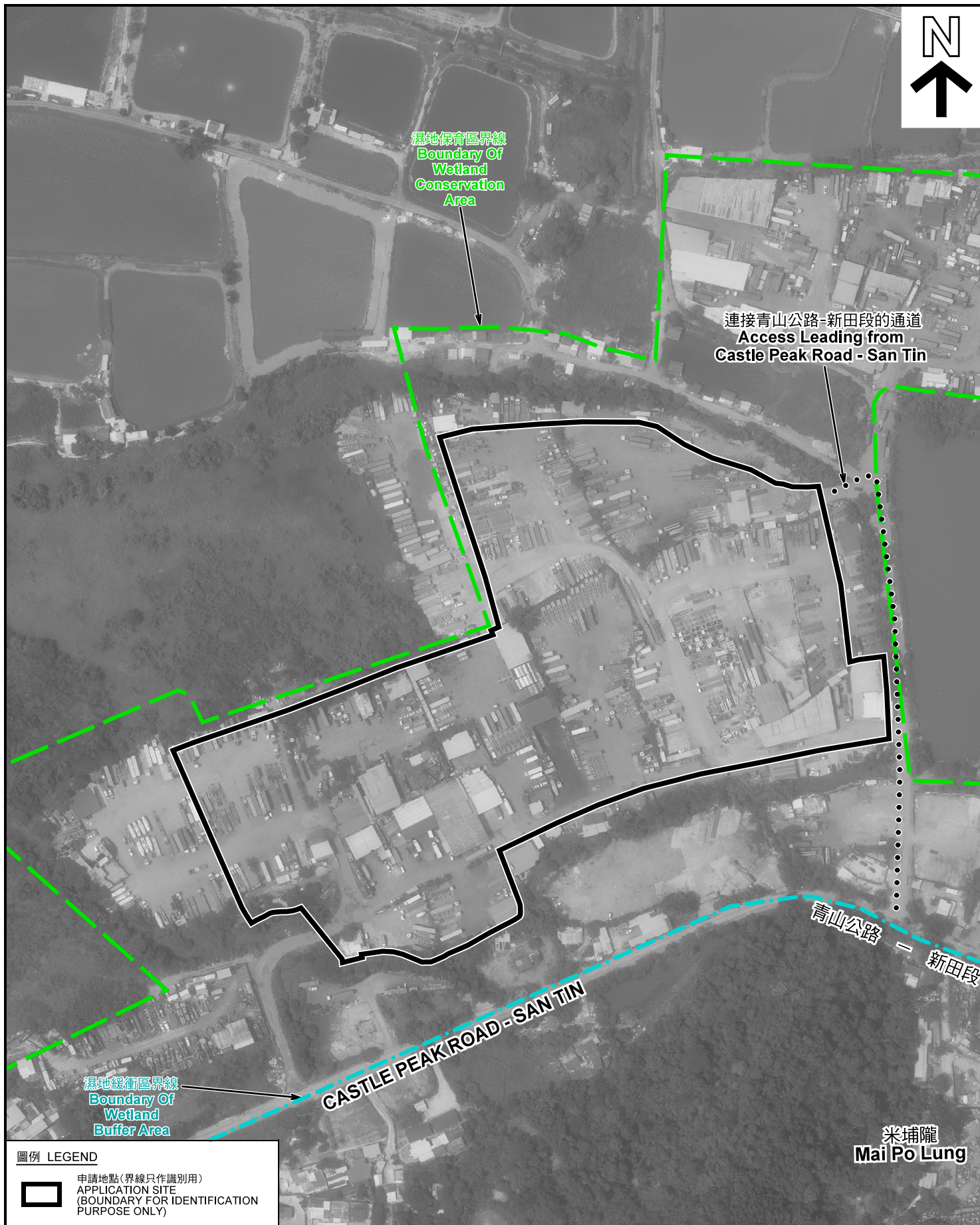
規劃署
PLANNING DEPARTMENT

參考編號 REFERENCE No.
AYL-ST/578

圖 PLAN
A-2

圖例 LEGEND

- 申請地點(界線只作識別用)
APPLICATION SITE
(BOUNDARY FOR IDENTIFICATION
PURPOSE ONLY)
- R(D) 住宅(丁類)
RESIDENTIAL (GROUP D)
- OU 其他指定用途
OTHER SPECIFIED USES
- GB 綠化地帶
GREEN BELT
- CA 自然保育區
CONSERVATION AREA
- RES 住用構築物
RESIDENTIAL STRUCTURES
- ① 實地照片的觀景點
VIEWING POINT OF SITE PHOTO
- ↔ 入口/出口
INGRESS / EGRESS



圖例 LEGEND



申請地點(界線只作識別用)
APPLICATION SITE
(BOUNDARY FOR IDENTIFICATION
PURPOSE ONLY)

本摘要圖於2021年5月12日擬備，所根據
的資料為地政總署於2020年4月15日拍得
的航攝照片編號 E094076C
EXTRACT PLAN PREPARED ON 12.5.2021
BASED ON AERIAL PHOTO No.
E094076C TAKEN ON 15.4.2020
BY LANDS DEPARTMENT

航攝照片 AERIAL PHOTO

臨時貨櫃車及貨車停車場及
露天存放建築材料連附屬車胎及車輛維修處、
地盤辦公室、員工飯堂及存放用途(為期18個月)
元朗新田丈量約份第99約地段第769號餘餘(部分)
TEMPORARY CONTAINER AND GOODS VEHICLE PARK AND
OPEN STORAGE OF CONSTRUCTION MATERIALS WITH ANCILLARY
TYRE AND VEHICLE REPAIR AREAS, SITE OFFICE, STAFF CANTEEN
AND STORAGE USES FOR A PERIOD OF 18 MONTHS
LOT 769 RP (PART) IN D.D. 99, SAN TIN, YUEN LONG

規劃署
PLANNING
DEPARTMENT



參考編號
REFERENCE No.
A/YL-ST/578

圖 PLAN
A-3



申請地點界線只作識別用 APPLICATION SITE BOUNDARY FOR IDENTIFICATION PURPOSE ONLY

實地照片 SITE PHOTOS

臨時貨櫃車及貨車停車場及
露天存放建築材料連附屬車胎及車輛維修處、
地盤辦公室、員工飯堂及存放用途（為期18個月）
元朗新田丈量約份第99約地段第769號餘段（部分）
TEMPORARY CONTAINER AND GOODS VEHICLE PARK AND
OPEN STORAGE OF CONSTRUCTION MATERIALS WITH ANCILLARY
TYRE AND VEHICLE REPAIR AREAS, SITE OFFICE, STAFF CANTEEN
AND STORAGE USES FOR A PERIOD OF 18 MONTHS
LOT 769 RP (PART) IN D.D. 99, SAN TIN, YUEN LONG

規劃署
PLANNING
DEPARTMENT



參考編號
REFERENCE No.
A/YL-ST/578

圖 PLAN
A-4a

本圖於2021年5月12日擬備，所根據的
資料為攝於2021年4月26日的實地照片
PLAN PREPARED ON 12.5.2021
BASED ON SITE PHOTOS
TAKEN ON 26.4.2021

6



申請地點
APPLICATION SITE

7



申請地點
APPLICATION SITE

8



申請地點
APPLICATION SITE

9



申請地點
APPLICATION SITE

申請地點界線只作識別用 APPLICATION SITE BOUNDARY FOR IDENTIFICATION PURPOSE ONLY

實地照片 SITE PHOTOS

本圖於2021年5月12日擬備，所根據的資料為攝於2021年4月26日的實地照片
PLAN PREPARED ON 12.5.2021
BASED ON SITE PHOTOS
TAKEN ON 26.4.2021

臨時貨櫃車及貨車停車場及
露天存放建築材料連附屬車胎及車輛維修處、
地盤辦公室、員工飯堂及存放用途（為期18個月）
元朗新田丈量約份第99約地段第769號餘段（部分）
TEMPORARY CONTAINER AND GOODS VEHICLE PARK AND
OPEN STORAGE OF CONSTRUCTION MATERIALS WITH ANCILLARY
TYRE AND VEHICLE REPAIR AREAS, SITE OFFICE, STAFF CANTEEN
AND STORAGE USES FOR A PERIOD OF 18 MONTHS
LOT 769 RP (PART) IN D.D. 99, SAN TIN, YUEN LONG

規 劃 署
PLANNING
DEPARTMENT



參考編號
REFERENCE No.
A/YL-ST/578

圖 PLAN
A-4b

10



11



12



申請地點界線只作識別用 APPLICATION SITE BOUNDARY FOR IDENTIFICATION PURPOSE ONLY

實地照片 SITE PHOTOS

本圖於2021年5月12日擬備，所根據的資料為攝於2021年4月26日的實地照片
PLAN PREPARED ON 12.5.2021
BASED ON SITE PHOTOS
TAKEN ON 26.4.2021

臨時貨櫃車及貨車停車場及
露天存放建築材料連附屬車胎及車輛維修處、
地盤辦公室、員工飯堂及存放用途（為期18個月）
元朗新田丈量約份第99約地段第769號餘段（部分）
TEMPORARY CONTAINER AND GOODS VEHICLE PARK AND
OPEN STORAGE OF CONSTRUCTION MATERIALS WITH ANCILLARY
TYRE AND VEHICLE REPAIR AREAS, SITE OFFICE, STAFF CANTEEN
AND STORAGE USES FOR A PERIOD OF 18 MONTHS
LOT 769 RP (PART) IN D.D. 99, SAN TIN, YUEN LONG

規劃署
PLANNING
DEPARTMENT



參考編號
REFERENCE No.
A/YL-ST/578

圖 PLAN
A-4c