

(摘錄自申請人於18. 1. 2024呈交的進一步資料)
(Extract from Applicant's Further
Information Submitted on 18.1.2024)

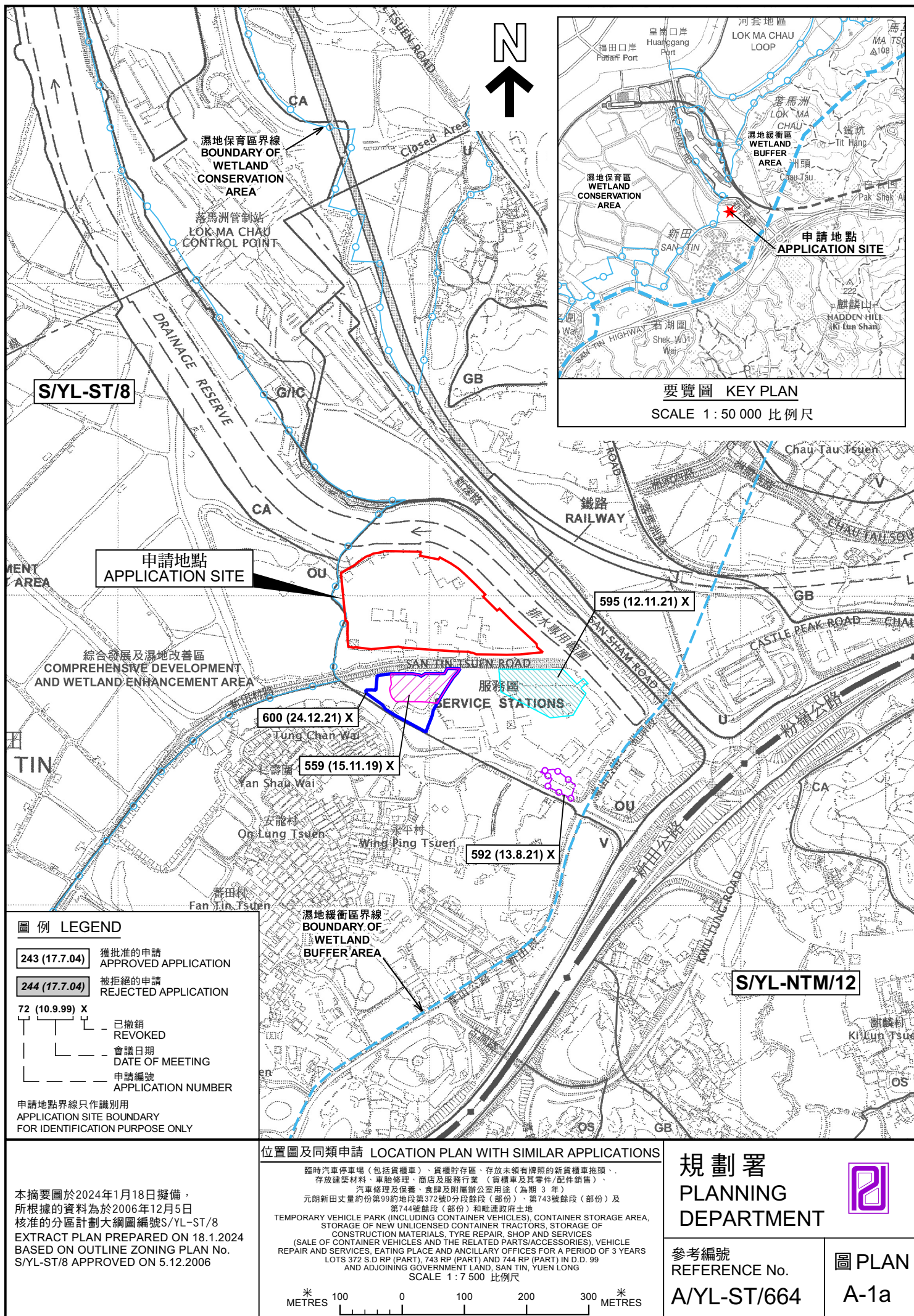
參考編號
REFERENCE No.
A/YL-ST/664

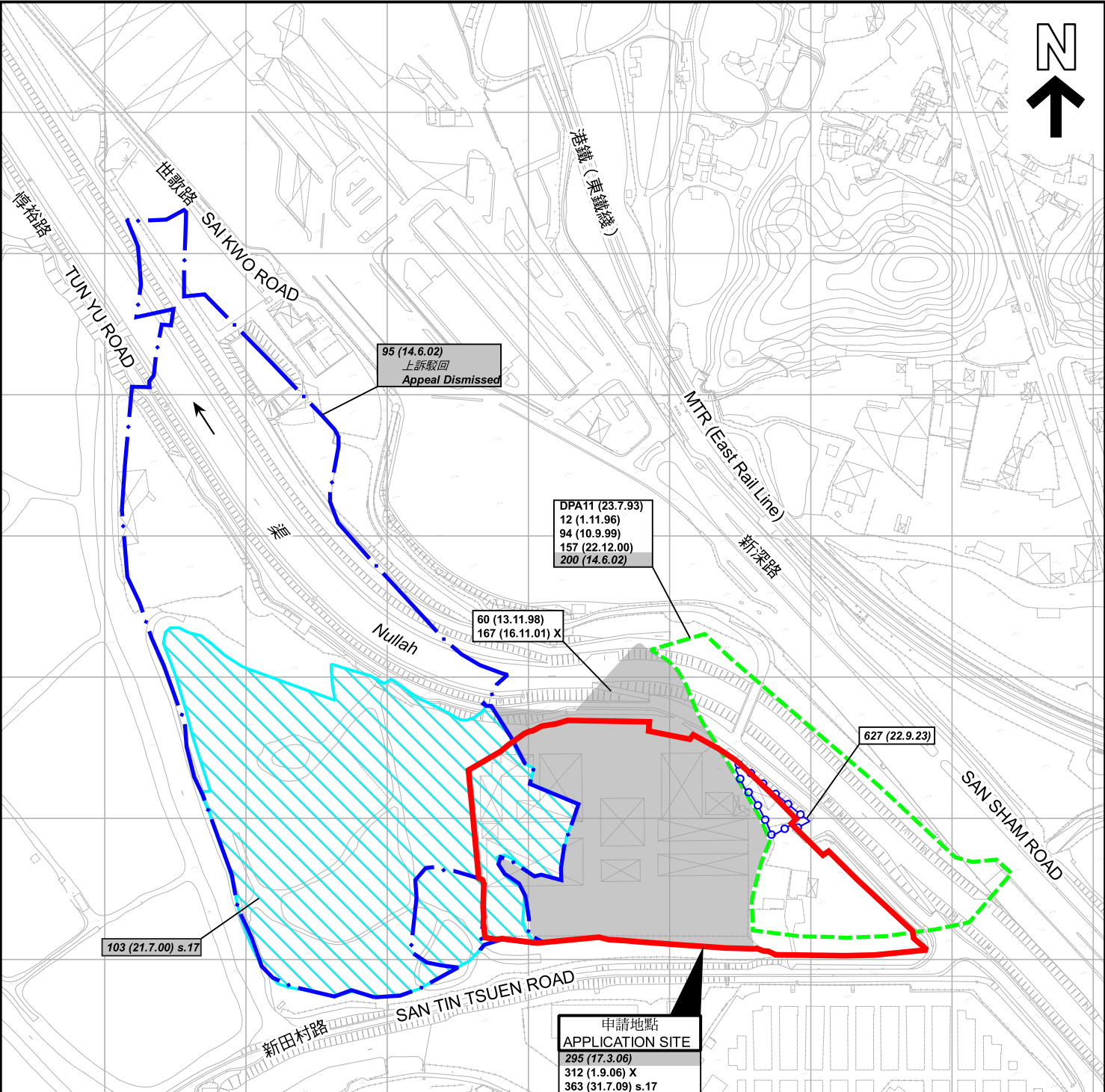
繪圖
DRAWING
A - 1a

Information of On-site Structures					
No.	Use	No. of Storey	Dimension	Covered Area (m ²)	GFA (m ²)
1	CLP Transformer Room	1	10m(W) x 10m(L) x 5m(H)	100	100
2	Vehicle Repairing and Servicing Area (Open-sided)	1	14m(W) x 23m(L) x 6m(H)	322	322
3	Vehicle Repairing and Servicing Area (Open-sided)	1	15m(W) x 30m(L) x 6m(H)	450	450
4	Vehicle Repairing and Servicing Area (Open-sided)	1	15m(W) x 17m(L) x 6m(H)	255	255
5	Shop, Office and Storeroom	2	28m(W) x 45m(L) x 7m(H)	1,260	2,520
6	Vehicle Repairing and Servicing Area (Open-sided)	1	32m(W) x 64m(L) x 6m(H)	2,048	2,048
7	Shop and Office	1	28m(W) x 33m(L) x 7.5m(H)	924	924
8	Vehicle Repairing and Servicing Area (Open-sided)	1	14m(W) x 25m(L) x 6m(H)	350	350
9	Shop, Office and Storeroom	2	27m(W) x 43m(L) x 8m(H)	1,161	2,322
10	Tyre Repairing Area	1	14m(W) x 18m(L) x 6m(H)	252	252
11	Tyre Repairing Area	1	4m(W) x 14m(L) x 6m(H)	56	56
12	Vehicle Repairing and Servicing Area (Open-sided)	1	15m(W) x 55m(L) x 6m(H)	825	825
13	Vehicle Repairing and Servicing Area (Open-sided)	1	15m(W) x 55m(L) x 6m(H)	825	825
14	Eating Place	1	9.1m(W) x 24.4m(L) x 7m(H)	222.0	222.0
15	Security Office	1	2.7m(W) x 6.1m(L) x 2.6m(H)	16.5	16.5
16	Container Storage Area (Open-sided)	1	9.1m(W) x 13.7m(L) x 5.2m(H)	124.7	124.7
17	Office	2	12.2m(W) x 12.2m(L) x 5.2m(H) 6.1m(W) x 6.1m(L) x 5.2m(H)	186.1	372.1
18	Container Storage Area (Open-sided)	1	4.3m(W) x 10.7m(L) x 7m(H)	46.0	46.0
19	Storage of Construction Materials	1 (Height = 8m)	(67m(L) + 88.99 m(L)) x 27m(W) / 2	2,105.9	2,105.9
Total Area (m²)				11,529.2	14,136.2

(摘錄自申請人於18. 1. 2024呈交的進一步資料)
(Extract from Applicant's Further
Information Submitted on 18.1.2024)

參考編號 REFERENCE No. A/YL-ST/664	繪圖 DRAWING A - 1b
--------------------------------------	-------------------------





圖例

LEGEND

243 (17.7.04)

獲批准的申請

APPROVED APPLICATION

244 (17.7.04)

被拒絕的申請

REJECTED APPLICATION

72 (10.9.99) X

已撤銷

REVOKED

—

會議日期

DATE OF MEETING

—

申請編號

APPLICATION NUMBER

申請地點界線只作識別用

APPLICATION SITE BOUNDARY

FOR IDENTIFICATION PURPOSE ONLY

東鎮圍

TUNG CHAN WAI

仁壽圍

YAN SHAU WAI

安龍村

ON LUNG TSUEN

申請地點

APPLICATION SITE

295 (17.3.06)

312 (1.9.06) X

363 (31.7.09) s.17

411 (16.3.12) X

438 (11.10.13) X

447 (22.8.14)

506 (11.8.17)

575 (15.9.20)

655 (11.9.23)

規劃署

PLANNING

DEPARTMENT

參考編號

REFERENCE No.

A/YL-ST/664

圖 PLAN

A-1b

本摘要圖於2024年1月15日擬備，
所根據的資料為測量圖編號
2-SE-3C，3D，8A，8B，8C 及 8D
EXTRACT PLAN PREPARED ON 15.1.2024
BASED ON SURVEY SHEET No.
2-SE-3C, 3D, 8A, 8B, 8C & 8D

先前申請圖 PREVIOUS APPLICATION PLAN

臨時汽車停車場（包括貨櫃車）、貨櫃貯存區、存放未領有牌照的新貨櫃車拖頭、
存放建築材料、車胎修理、商店及服務行業（貨櫃車及其零件/配件銷售）、
汽車修理及保養、食肆及附屬辦公室用途（為期 3 年）
元朗新田丈量約份第99約地段第372號D分段餘段（部份）、第743號餘段（部份）及
第744號餘段（部份）和毗連政府土地
TEMPORARY VEHICLE PARK (INCLUDING CONTAINER VEHICLES), CONTAINER STORAGE AREA,
STORAGE OF NEW UNLICENSED CONTAINER TRACTORS, STORAGE OF
CONSTRUCTION MATERIALS, TYRE REPAIR, SHOP AND SERVICES
(SALE OF CONTAINER VEHICLES AND THE RELATED PARTS/ACCESSORIES), VEHICLE
REPAIR AND SERVICES, EATING PLACES AND ANCILLARY OFFICES FOR A PERIOD OF 3 YEARS
LOTS 372 S.D.RP (PART), 743 RP (PART) AND 744 RP (PART) IN D.D. 99
AND ADJOINING GOVERNMENT LAND, SAN TIN, YUEN LONG
SCALE 1 : 4 000 比例尺

米

80

0

80

160

米

METRES

參考編號

REFERENCE No.

A/YL-ST/664

圖 PLAN

A-1b

建議發展大綱圖 Recommended Outline Development Plan

圖 Plan 1



申請地點及新田科技城的土地用途建議 APPLICATION SITE AND LAND USE PROPOSAL OF SAN TIN TECHNOPOLE

臨時汽車停車場 (包括貨櫃車)、貨櫃貯存區、存放未領有牌照的新貨櫃車拖頭、存放建築材料、車胎修理、商店及服務行業 (貨櫃車及其零件/配件銷售)、汽車修理及保養、食肆及附屬辦公室用途 (為期 3 年)
元朗新田丈量約份第99約地段第372號D分段餘段 (部份)、第743號餘段 (部份) 及第744號餘段 (部份) 和毗連政府土地
TEMPORARY VEHICLE PARK (INCLUDING CONTAINER VEHICLES), CONTAINER STORAGE AREA, STORAGE OF NEW UNLICENSED CONTAINER TRACTORS, STORAGE OF CONSTRUCTION MATERIALS, TYRE REPAIR, SHOP AND SERVICES (SALE OF CONTAINER VEHICLES AND THE RELATED PARTS/ACCESSORIES), VEHICLE REPAIR AND SERVICES, EATING PLACE AND ANCILLARY OFFICES FOR A PERIOD OF 3 YEARS
LOTS 372 S.D RP (PART), 743 RP (PART) AND 744 RP (PART) IN D.D. 99 AND ADJOINING GOVERNMENT LAND, SAN TIN, YUEN LONG

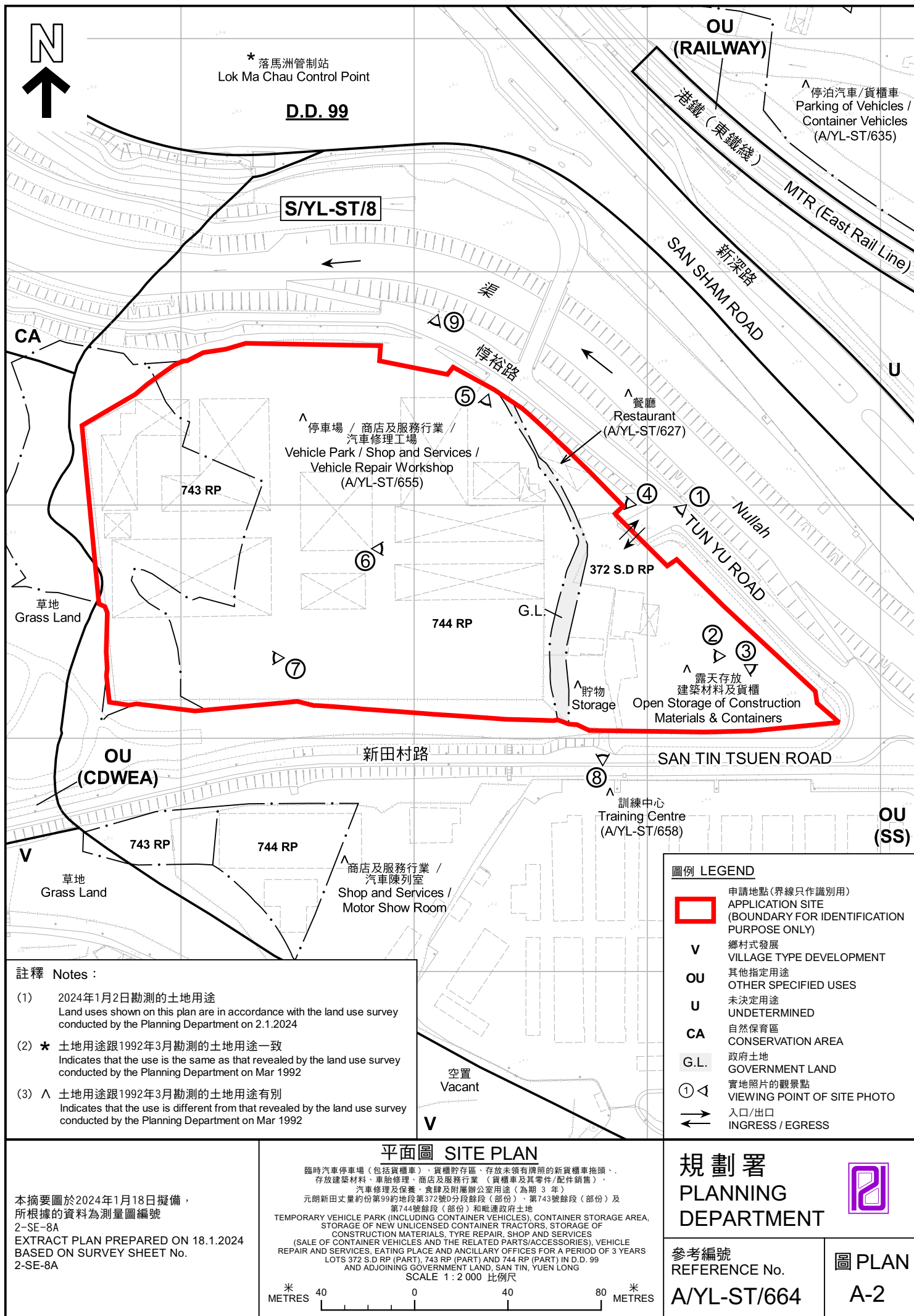
規劃署
PLANNING
DEPARTMENT

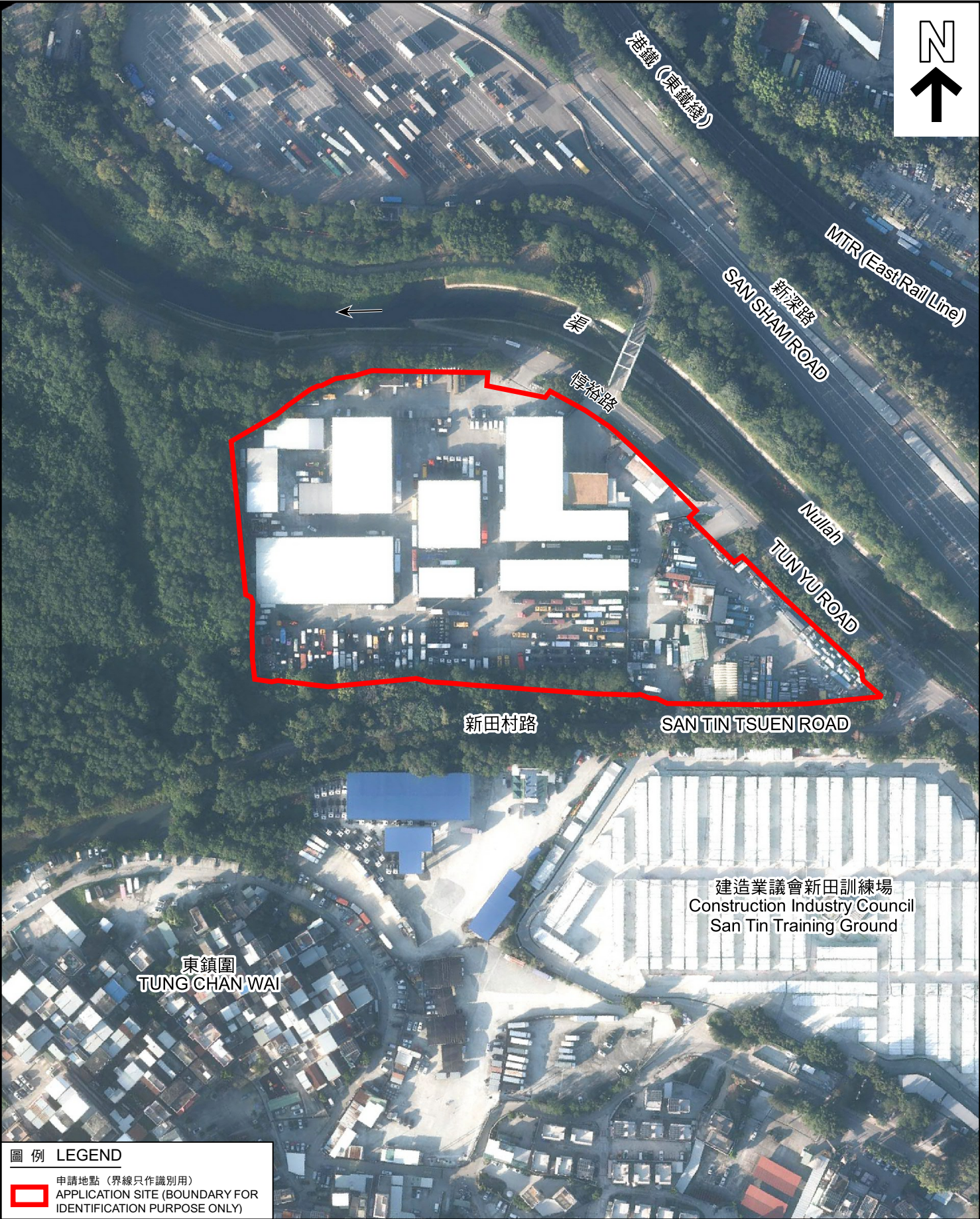


參考編號
REFERENCE No.
A/YL-ST/664

圖 PLAN
A-1c

本摘要圖於2024年1月15日擬備
EXTRACT PLAN PREPARED
ON 15.1.2024





圖例 LEGEND

 申請地點 (界線只作識別用)
APPLICATION SITE (BOUNDARY FOR IDENTIFICATION PURPOSE ONLY)

本摘要圖於2024年1月15日擬備，
所根據的資料為地政總署於2022年12月18日
拍得的航攝照片編號 E175101C
EXTRACT PLAN PREPARED ON 15.1.2024
BASED ON AERIAL PHOTO No.
E175101C TAKEN ON 18.12.2022
BY LANDS DEPARTMENT

航攝照片 AERIAL PHOTO

臨時汽車停車場 (包括貨櫃車)、貨櫃貯存區、存放未領有牌照的新貨櫃車拖頭、
存放建築材料、車胎修理、商店及服務行業 (貨櫃車及其零件/配件銷售)、
汽車修理及保養、食肆及附屬辦公室用途 (為期 3 年)
元朗新田丈量約份第99約地段第372號D分段餘段 (部份)、第743號餘段 (部份) 及
第744號餘段 (部份) 和毗連政府土地
TEMPORARY VEHICLE PARK (INCLUDING CONTAINER VEHICLES), CONTAINER STORAGE AREA,
STORAGE OF NEW UNLICENSED CONTAINER TRACTORS, STORAGE OF
CONSTRUCTION MATERIALS, TYRE REPAIR, SHOP AND SERVICES
(SALE OF CONTAINER VEHICLES AND THE RELATED PARTS/ACCESSORIES), VEHICLE
REPAIR AND SERVICES, EATING PLACE AND ANCILLARY OFFICES FOR A PERIOD OF 3 YEARS
LOTS 372 S.D RP (PART), 743 RP (PART) AND 744 RP (PART) IN D.D. 99
AND ADJOINING GOVERNMENT LAND, SAN TIN, YUEN LONG

規劃署 PLANNING DEPARTMENT	
參考編號 REFERENCE No. A/YL-ST/664	圖 PLAN A-3



申請地點界線只作識別用 APPLICATION SITE BOUNDARY FOR IDENTIFICATION PURPOSE ONLY

實地照片 SITE PHOTOS

本圖於2024年1月15日擬備，所根據的資料為攝於2024年1月2日的實地照片
PLAN PREPARED ON 15.1.2024
BASED ON SITE PHOTOS
TAKEN ON 2.1.2024

臨時汽車停車場（包括貨櫃車）、貨櫃貯存區、存放未領有牌照的新貨櫃車拖頭、存放建築材料、車胎修理、商店及服務行業（貨櫃車及其零件/配件銷售）、汽車修理及保養、食肆及附屬辦公室用途（為期3年）
元朗新田丈量約份第99約地段第372號D分段餘段（部份）、第743號餘段（部份）及第744號餘段（部份）和毗連政府土地
TEMPORARY VEHICLE PARK (INCLUDING CONTAINER VEHICLES), CONTAINER STORAGE AREA, STORAGE OF NEW UNLICENSED CONTAINER TRACTORS, STORAGE OF CONSTRUCTION MATERIALS, TYRE REPAIR, SHOP AND SERVICES (SALE OF CONTAINER VEHICLES AND THE RELATED PARTS/ACCESSORIES), VEHICLE REPAIR AND SERVICES, EATING PLACE AND ANCILLARY OFFICES FOR A PERIOD OF 3 YEARS
LOTS 372 S.D RP (PART), 743 RP (PART) AND 744 RP (PART) IN D.D. 99 AND ADJOINING GOVERNMENT LAND, SAN TIN, YUEN LONG

規劃署
PLANNING
DEPARTMENT



參考編號
REFERENCE No.
A/YL-ST/664

圖 PLAN
A-4a



申請地點界線只作識別用 APPLICATION SITE BOUNDARY FOR IDENTIFICATION PURPOSE ONLY

實地照片 SITE PHOTOS

本圖於2024年1月16日擬備，所根據的資料為攝於2024年1月2日的實地照片
PLAN PREPARED ON 16.1.2024
BASED ON SITE PHOTOS
TAKEN ON 2.1.2024

臨時汽車停車場（包括貨櫃車）、貨櫃貯存區、存放未領有牌照的新貨櫃車拖頭、存放建築材料、車胎修理、商店及服務行業（貨櫃車及其零件/配件銷售）、汽車修理及保養、食肆及附屬辦公室用途（為期3年）
元朗新田丈量約份第99約地段第372號D分段餘段（部份）、第743號餘段（部份）及第744號餘段（部份）和毗連政府土地
TEMPORARY VEHICLE PARK (INCLUDING CONTAINER VEHICLES), CONTAINER STORAGE AREA, STORAGE OF NEW UNLICENSED CONTAINER TRACTORS, STORAGE OF CONSTRUCTION MATERIALS, TYRE REPAIR, SHOP AND SERVICES (SALE OF CONTAINER VEHICLES AND THE RELATED PARTS/ACCESSORIES), VEHICLE REPAIR AND SERVICES, EATING PLACE AND ANCILLARY OFFICES FOR A PERIOD OF 3 YEARS
LOTS 372 S.D RP (PART), 743 RP (PART) AND 744 RP (PART) IN D.D. 99 AND ADJOINING GOVERNMENT LAND, SAN TIN, YUEN LONG

規劃署
PLANNING
DEPARTMENT



參考編號
REFERENCE No.
A/YL-ST/664

圖 PLAN
A-4b



申請地點界線只作識別用 APPLICATION SITE BOUNDARY FOR IDENTIFICATION PURPOSE ONLY

<p>本圖於2024年1月15日擬備，所根據的資料為攝於2024年1月2日的實地照片 PLAN PREPARED ON 15.1.2024 BASED ON SITE PHOTOS TAKEN ON 2.1.2024</p>	<p>實地照片 SITE PHOTOS</p> <p>臨時汽車停車場（包括貨櫃車）、貨櫃貯存區、存放未領有牌照的新貨櫃車拖頭、存放建築材料、車胎修理、商店及服務行業（貨櫃車及其零件/配件銷售）、汽車修理及保養、食肆及附屬辦公室用途（為期3年） 元朗新田丈量約份第99約地段第372號D分段餘段（部份）、第743號餘段（部份）及第744號餘段（部份）和毗連政府土地 TEMPORARY VEHICLE PARK (INCLUDING CONTAINER VEHICLES), CONTAINER STORAGE AREA, STORAGE OF NEW UNLICENSED CONTAINER TRACTORS, STORAGE OF CONSTRUCTION MATERIALS, TYRE REPAIR, SHOP AND SERVICES (SALE OF CONTAINER VEHICLES AND THE RELATED PARTS/ACCESSORIES), VEHICLE REPAIR AND SERVICES, EATING PLACE AND ANCILLARY OFFICES FOR A PERIOD OF 3 YEARS LOTS 372 S.D RP (PART), 743 RP (PART) AND 744 RP (PART) IN D.D. 99 AND ADJOINING GOVERNMENT LAND, SAN TIN, YUEN LONG</p>	<p>規 劃 署 PLANNING DEPARTMENT</p> <p>參考編號 REFERENCE No. A/YL-ST/664</p>	<p></p> <p>圖 PLAN A-4c</p>
--	--	---	---