



**Structure 2**  
Retail shop for hardware accessories  
GFA: Not exceeding 180m<sup>2</sup>  
Height: Not exceeding 5m  
No. of storey: 1

**Structure 1**  
Retail shop for hardware accessories  
GFA: Not exceeding 220m<sup>2</sup>  
Height: Not exceeding 5m  
No. of storey: 1

8m Ingress/  
Egress

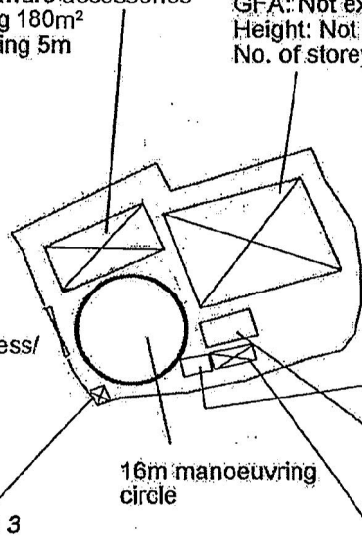
1 parking space  
of 5m x 2.5m for  
private car

1 loading/unloading  
bay of 7m x 3.5m for  
light goods vehicle

16m manoeuvring  
circle

**Structure 3**  
Toilet  
GFA: Not exceeding 4m<sup>2</sup>  
Height: Not exceeding 3m  
No. of storey: 1

**Structure 4**  
Site office  
GFA: Not exceeding 20m<sup>2</sup>  
Height: Not exceeding 3m  
No. of storey: 1



Project 項目名稱:

Proposed Temporary Shop and  
Services (Retail Shop for Hardware  
Accessories) for a Period of 3 Years at  
Lots 1816 (Part) & 1820 (Part) in D.D.  
121, Tong Yan San Tsuen, Yuen Long,  
N.T.

Drawing Title 圖目:

Proposed Layout Plan

Remarks 備註:

Drawing No. 圖號:

Figure 3

Scale 比例:

1:1000

(摘錄自申請人於 31.5.2021 呈交的申請書)  
(Extract from Applicant's  
Submission of 31.5.2021)

參考編號

REFERENCE No.

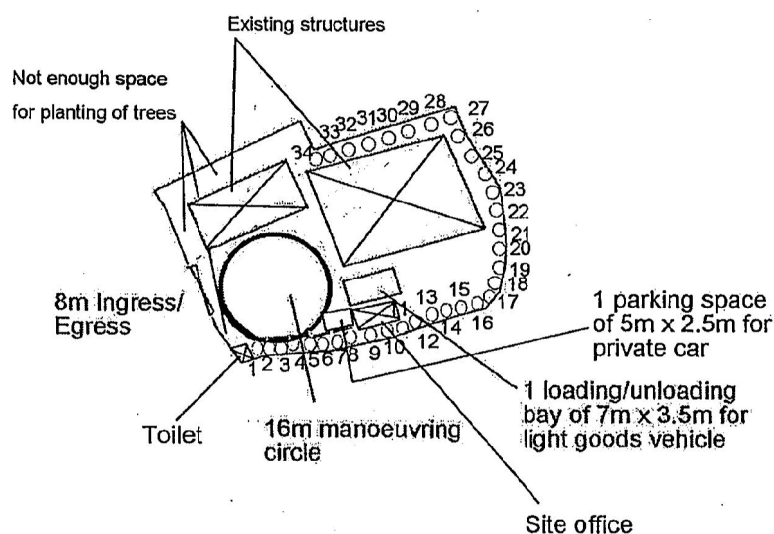
A/YL-TYST/1101

繪圖 DRAWING

A-2



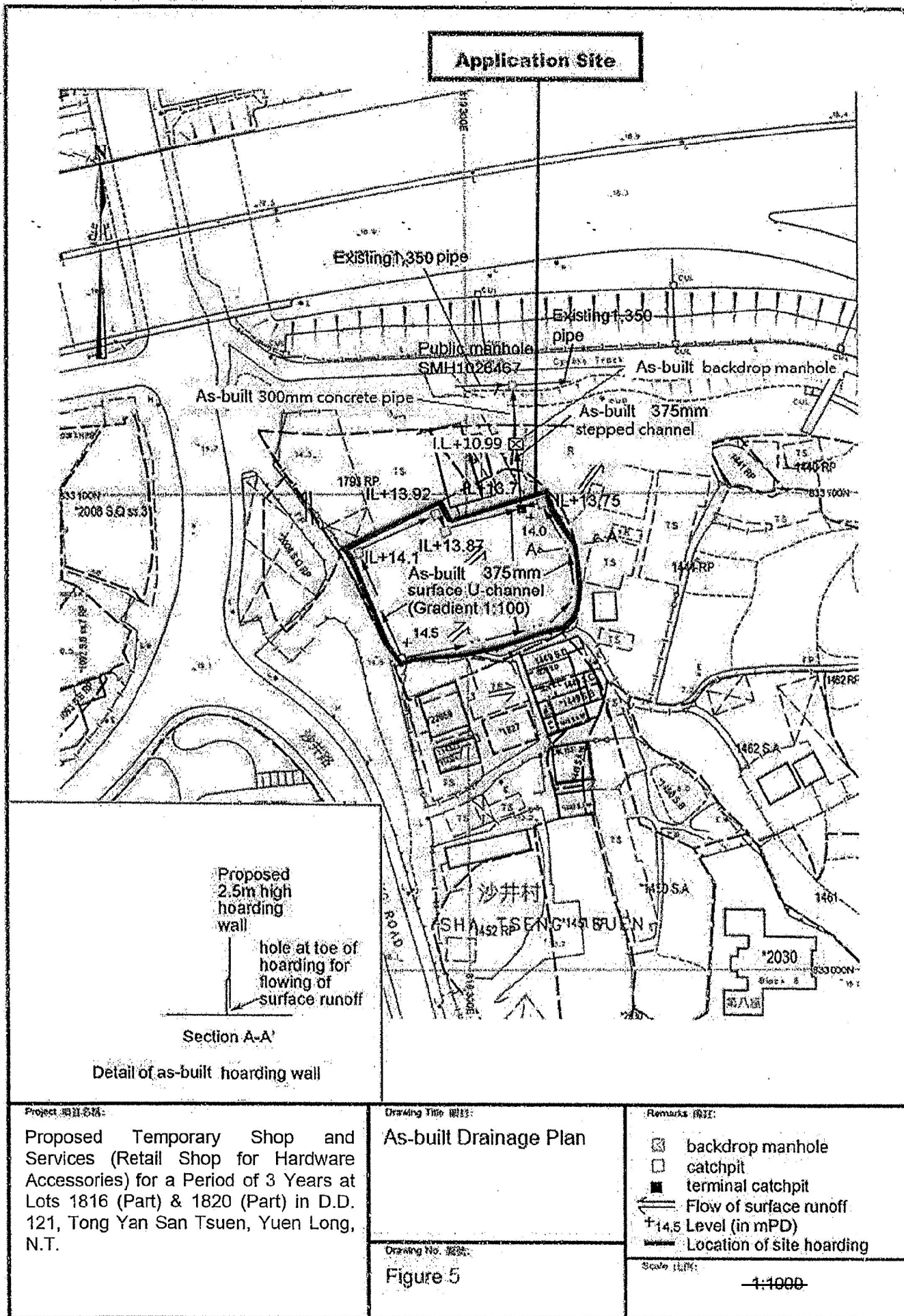
Tree	Approximate Height	Spacing
○ Existing <i>Bauhinia blakeana</i>	2.75m	3m to 4m



<b>Project 項目名稱:</b> Proposed Temporary Shop and Services (Retail Shop for Hardware Accessories) for a Period of 3 Years at Lots 1816 (Part) & 1820 (Part) in D.D. 121, Tong Yan San Tsuen, Yuen Long, N.T.	<b>Drawing Title 圖目:</b> Proposed Tree Preservation Plan	<b>Remarks 備註:</b> --- Existing kerb
	<b>Drawing No. 圖號:</b> Figure 4	<b>Scale 比例:</b> 1:1000

(摘錄自申請人於 31.5.2021 呈交的申請書)  
(Extract from Applicant's Submission of 31.5.2021)

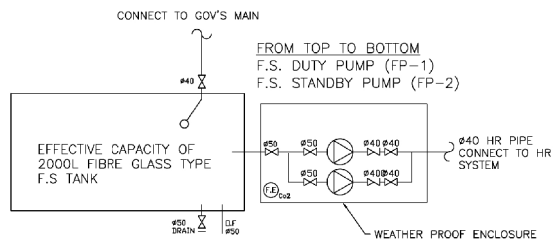
參考編號 REFERENCE No. A/YL-TYST/1101	繪圖 DRAWING A-3
---	-------------------



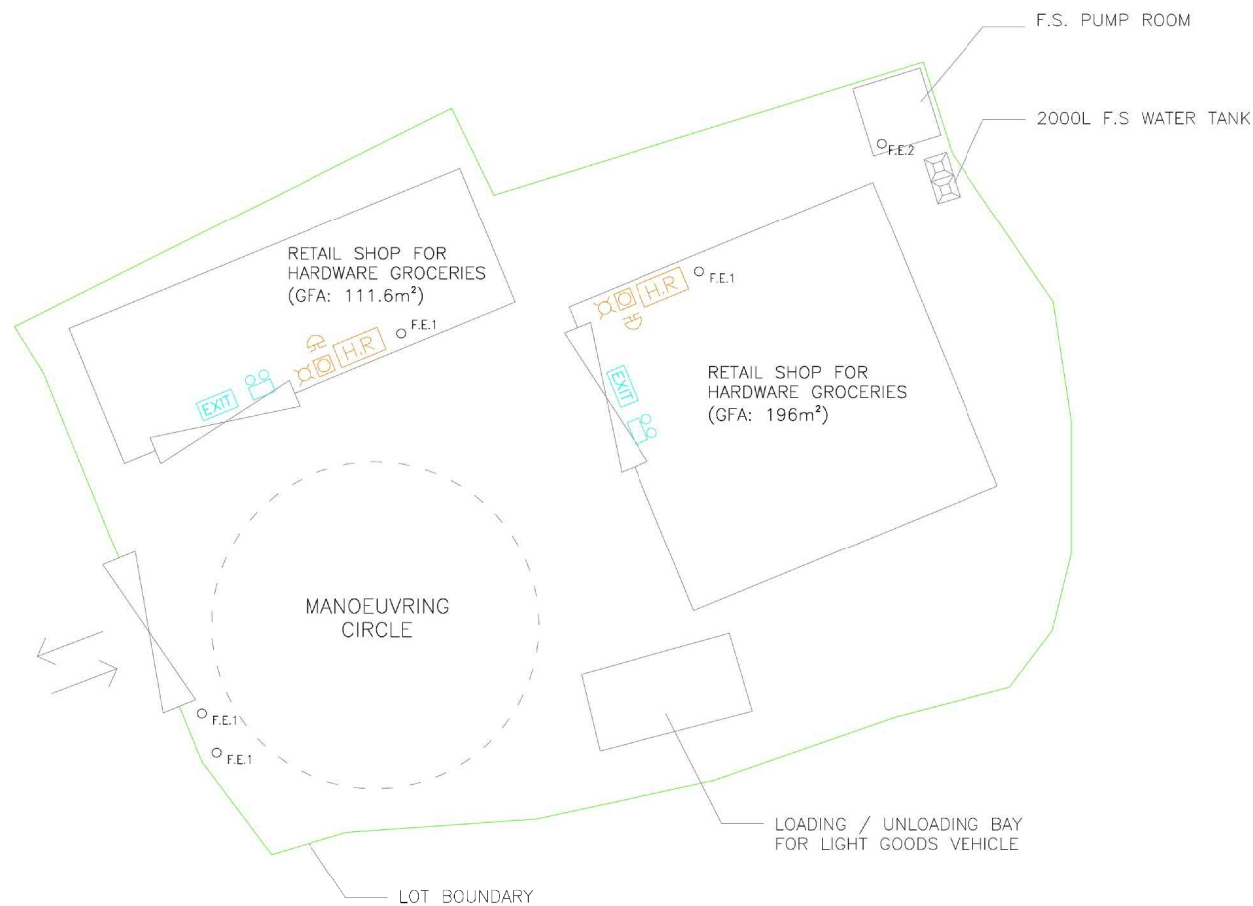
(摘錄自申請人於 31.5.2021 呈交的申請書)  
(Extract from Applicant's Submission of 31.5.2021)

參考編號  
REFERENCE No.  
A/YL-TYST/1101

繪圖 DRAWING  
A-4



DETAILS "1" F.S. PUMP & PIPEWORK ARRANGEMENT (N.T.S)



REV	DESCRIPTION	DATE	BY
B	REVISE	13-04-2018	HY
A	FSD SUBMISSION	28-08-2017	HY

FSI CONTRACTOR

East Power Engineering Limited



Plot A, 7/F., Hop Shing Commercial Building,  
41 Chi Kiang Street, Tsimshatsui, Kowloon  
Fax : 2394-3772 Tel : 2397-3238

PROJECT

TEMPORARY SHOP AND SERVICES (RETAIL SHOP FOR HARDWARE GROCERIES) FOR A PERIOD OF 3 YEARS AT LOTS 1816 (PART) & 1820 (PART) IN C.D. 121, TONG TAN SAN TSUEN, YUEN LONG

DRAWING TITLE

PROPOSED FSI LAYOUT PLAN

	INITIAL	DESIGNATION	DATE
DRAWN BY	HY	A. Eng	28-8-2017
DESIGNED BY	HY	A. Eng	28-8-2017
CHECKED BY	CM	PM	28-8-2017
APPROVED BY	CM	PM	28-8-2017

PROJECT NO. 10354

PAPER SIZE	A3	PLOT SCALE	1 : 1
------------	----	------------	-------

DRAWING NO.

EP-10354-FS02

SCALE	1 : 200	REVISION	B
-------	---------	----------	---

(摘錄自申請人於 7.6.2021 呈交的補充資料)  
(Extract from Applicant's Supplementary  
Information Submitted on 7.6.2021)

參考編號  
REFERENCE No.  
A/YL-TYST/1101

繪圖 DRAWING  
A-5



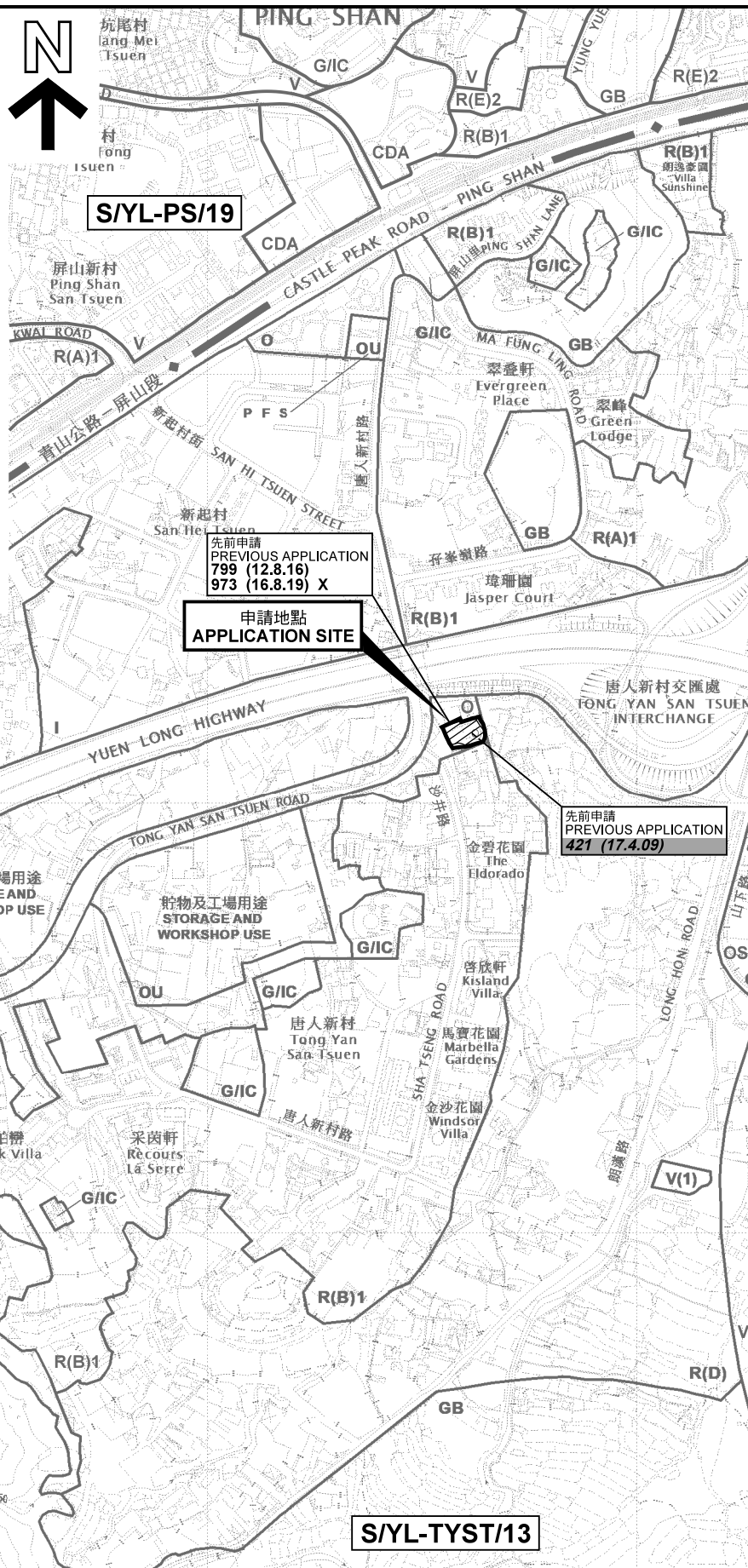
申請地點  
APPLICATION SITE

### 要覽圖 KEY PLAN

SCALE 1: 50 000 比例尺



S/YL-PS/19



先前申請  
PREVIOUS APPLICATION  
799 (12.8.16)  
973 (16.8.19) X

申請地點  
APPLICATION SITE

先前申請  
PREVIOUS APPLICATION  
421 (17.4.09)

### 圖例 LEGEND

- |                       |                                |
|-----------------------|--------------------------------|
| <b>243 (17.7.04)</b>  | 獲批准的申請<br>APPROVED APPLICATION |
| <b>244 (17.7.04)</b>  | 被拒絕的申請<br>REJECTED APPLICATION |
| <b>72 (10.9.99) X</b> |                                |
|                       | 已撤銷<br>REVOKED                 |
|                       | 會議日期<br>DATE OF MEETING        |
|                       | 申請編號<br>APPLICATION NUMBER     |

申請地點界線只作識別用  
APPLICATION SITE BOUNDARY  
FOR IDENTIFICATION PURPOSE ONLY

### 位置圖 LOCATION PLAN

擬議臨時商店及服務行業（為期3年）  
元朗唐人新村丈量約份第121約地段第1816號（部分）及第1820號（部分）  
PROPOSED TEMPORARY SHOP AND SERVICES  
FOR A PERIOD OF 3 YEARS  
LOTS 1816 (PART) AND 1820 (PART) IN D.D.121,  
TONG YAN SAN TSUEN, YUEN LONG

SCALE 1: 7 500 比例尺  
100 0 100 200 300 米  
METRES

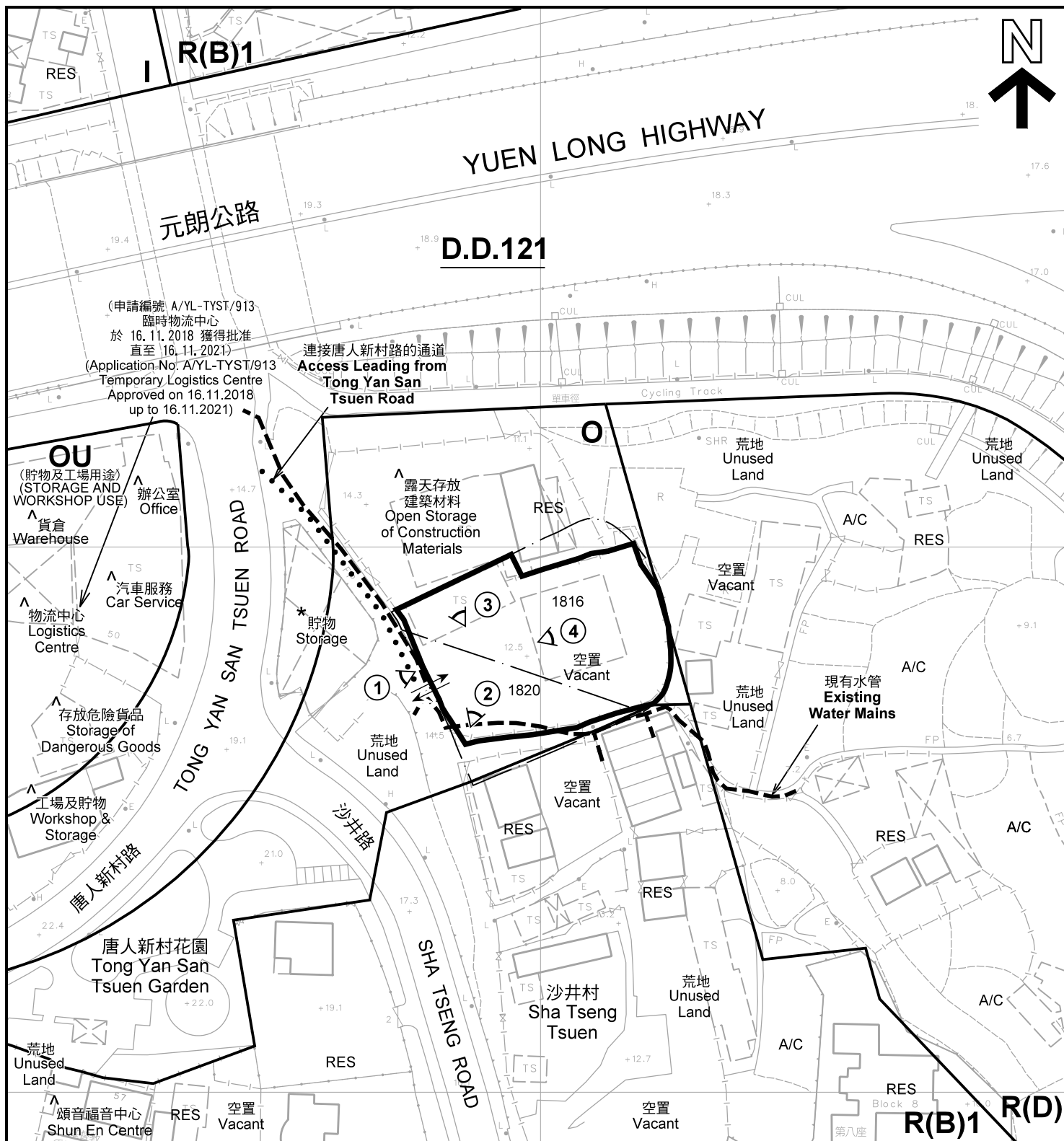
規劃署  
PLANNING  
DEPARTMENT



參考編號  
REFERENCE No.  
A/YL-TYST/1101

圖 PLAN  
A-1

本摘要圖於2021年6月29日擬備，  
所根據的資料為2020年7月10日  
展示的分區計劃大綱圖編號 S/YL-TYST/13  
EXTRACT PLAN PREPARED ON 29.6.2021  
BASED ON OUTLINE ZONING PLAN No.  
S/YL-TYST/13 EXHIBITED ON 10.7.2020



註釋 Notes :

- (1) 2021年6月15日勘測的土地用途  
Land uses shown on this plan are in accordance with the land use survey conducted by the Planning Department on 15.6.2021
- (2) \* 土地用途跟1993年6月18日、1993年6月21日及1993年7月5日勘測的土地用途一致  
Indicates that the use is the same as that revealed by the land use survey conducted by the Planning Department on 18.6.1993, 21.6.1993 & 5.7.1993
- (3) ^ 土地用途跟1993年6月18日、1993年6月21日及1993年7月5日勘測的土地用途有別  
Indicates that the use is different from that revealed by the land use survey conducted by the Planning Department on 18.6.1993, 21.6.1993 & 5.7.1993

圖例 LEGEND



申請地點(界線只作識別用)  
APPLICATION SITE  
(BOUNDARY FOR IDENTIFICATION  
PURPOSE ONLY)

R(B)

住宅(乙類)  
RESIDENTIAL (GROUP B)

R(D)

住宅(丁類)  
RESIDENTIAL (GROUP D)

I

工業  
INDUSTRIAL

OU

其他指定用途  
OTHER SPECIFIED USES

O

休憩用地  
OPEN SPACE

RES

住宅建築物  
RESIDENTIAL STRUCTURES

A/C

常耕農地  
CULTIVATED AGRICULTURAL LAND

①

實地照片的觀景點  
VIEWING POINT OF SITE PHOTO

↔

入口/出口  
INGRESS / EGRESS

平面圖 SITE PLAN

擬議臨時商店及服務行業 (為期3年)  
元朗唐人新村丈量約份第121約地段第1816號(部分)及第1820號(部分)  
PROPOSED TEMPORARY SHOP AND SERVICES  
FOR A PERIOD OF 3 YEARS  
LOTS 1816 (PART) AND 1820 (PART) IN D.D.121,  
TONG YAN SAN TSUEN, YUEN LONG

本摘要圖於2021年7月15日擬備, 所根據的資料為測量圖編號 6-NW-13B 及 13D  
EXTRACT PLAN PREPARED ON 15.7.2021  
BASED ON SURVEY SHEETS No.  
6-NW-13B & 13D

SCALE 1 : 1 000 比例尺  
米 METRES 20 0 20 40 米 METRES

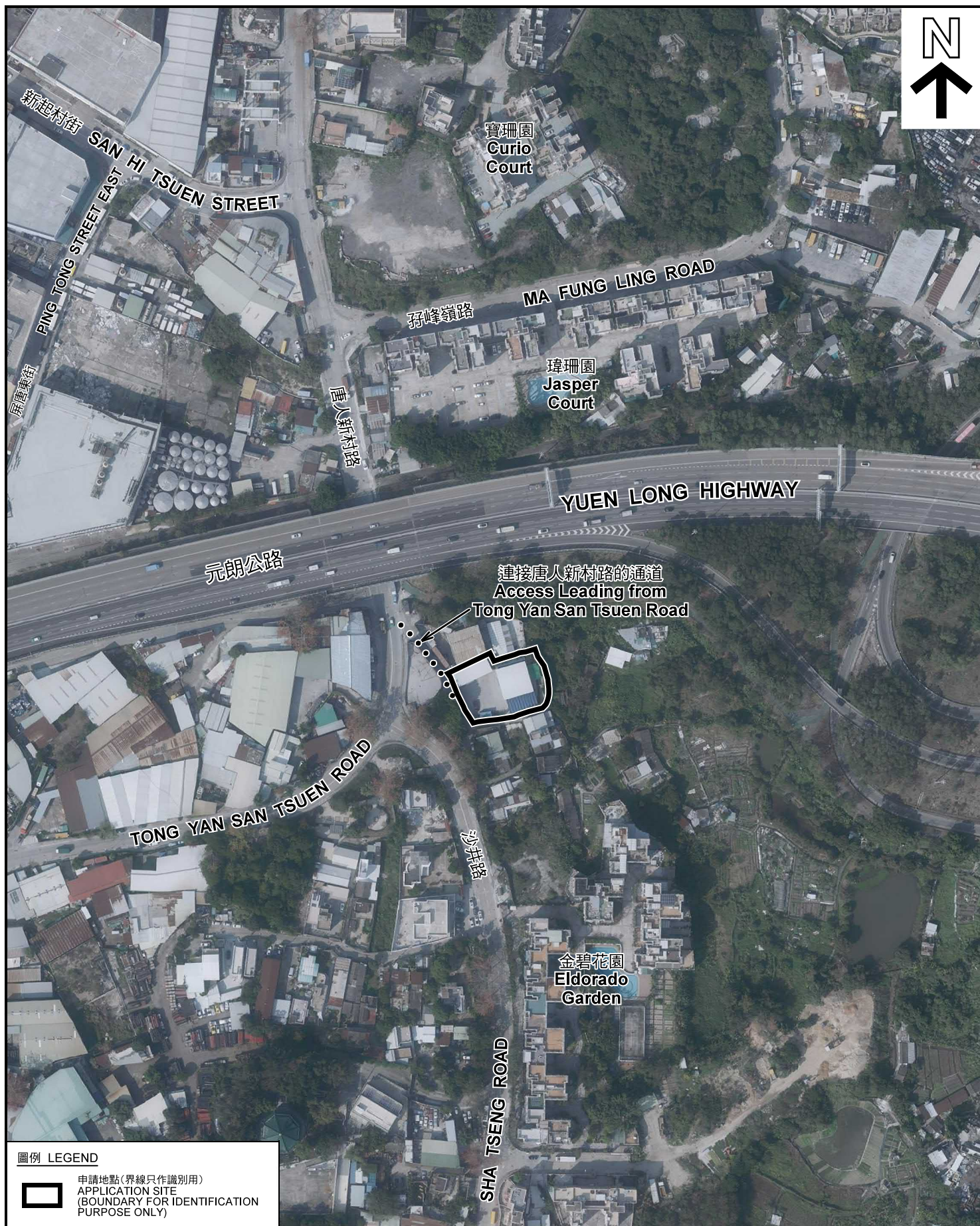
規劃署  
PLANNING  
DEPARTMENT



參考編號  
REFERENCE No.

A/YL-TYST/1101

圖 PLAN  
A-2



#### 圖例 LEGEND



申請地點 (界線只作識別用)  
APPLICATION SITE  
(BOUNDARY FOR IDENTIFICATION  
PURPOSE ONLY)

本摘要圖於2021年6月29日擬備，所根據的資料為地政總署於2020年2月18日拍得的航攝照片編號 E089567C  
EXTRACT PLAN PREPARED ON 29.6.2021  
BASED ON AERIAL PHOTO No.  
E089567C TAKEN ON 18.2.2020  
BY LANDS DEPARTMENT

#### 航攝照片 AERIAL PHOTO

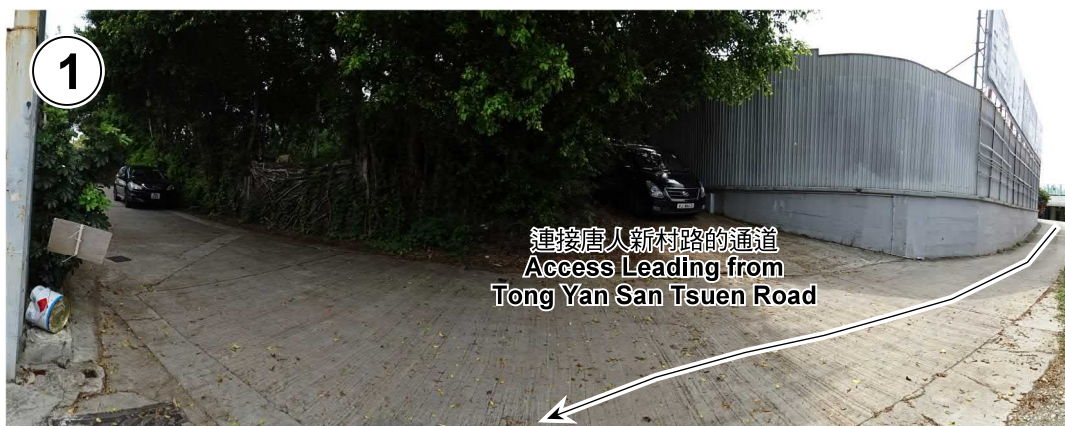
擬議臨時商店及服務行業 (為期3年)  
元朗唐人新村丈量約份第121約地段第1816號(部分)及第1820號(部分)  
PROPOSED TEMPORARY SHOP AND SERVICES  
FOR A PERIOD OF 3 YEARS  
LOTS 1816 (PART) AND 1820 (PART) IN D.D.121,  
TONG YAN SAN TSUEN, YUEN LONG

規劃署  
PLANNING  
DEPARTMENT



參考編號  
REFERENCE No.  
A/YL-TYST/1101

圖 PLAN  
A-3



1

連接唐人新村路的通道  
Access Leading from  
Tong Yan San Tsuen Road



2

申請地點  
APPLICATION SITE



3

申請地點  
APPLICATION SITE



4

申請地點  
APPLICATION SITE

### 實地照片 SITE PHOTOS

擬議臨時商店及服務行業（為期3年）  
元朗唐人新村丈量約份第121約地段第1816號（部分）及第1820號（部分）  
PROPOSED TEMPORARY SHOP AND SERVICES  
FOR A PERIOD OF 3 YEARS  
LOTS 1816 (PART) AND 1820 (PART) IN D.D.121,  
TONG YAN SAN TSUEN, YUEN LONG

本圖於2021年6月29日擬備，所根據的資料為攝於2021年6月8日的實地照片  
PLAN PREPARED ON 29.6.2021  
BASED ON SITE PHOTOS  
TAKEN ON 8.6.2021

規劃署  
PLANNING  
DEPARTMENT



參考編號  
REFERENCE No.  
A/YL-TYST/1101

圖 PLAN  
A-4