

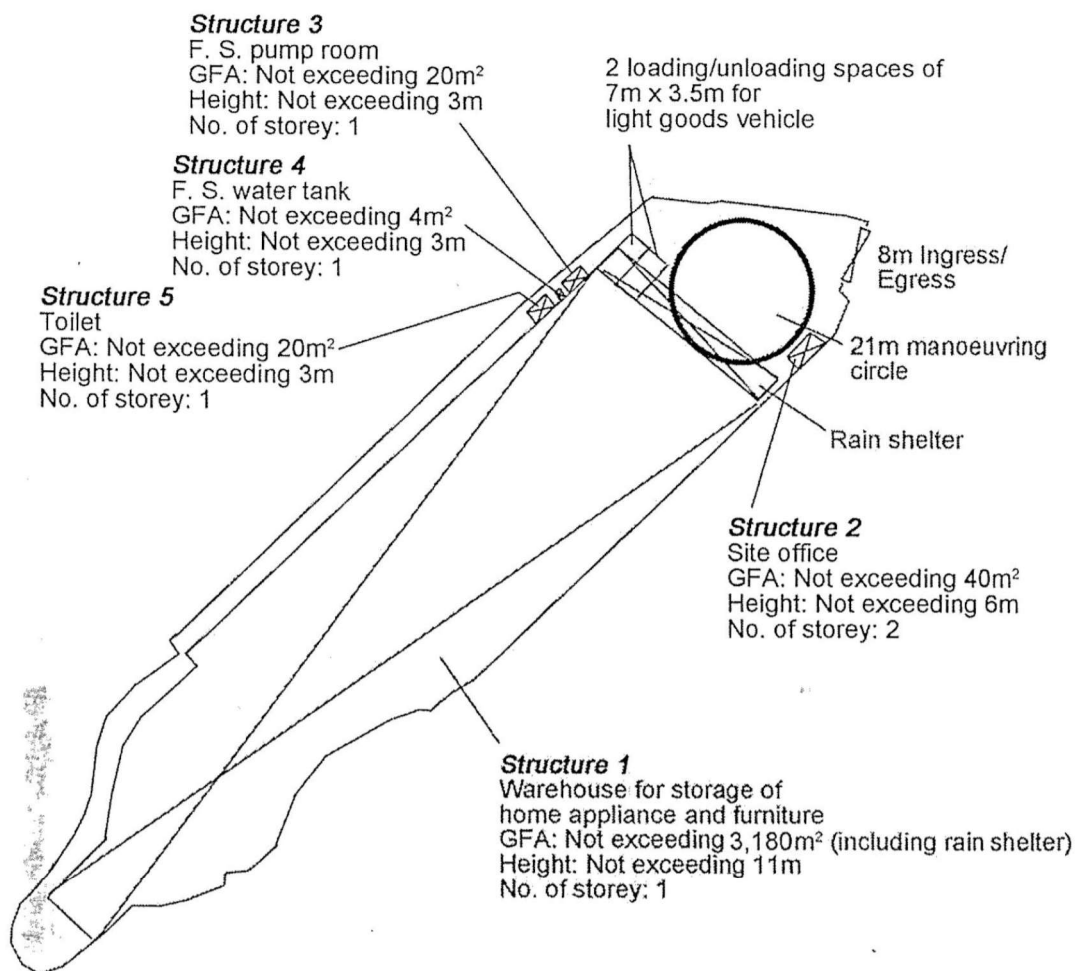
<p>Project 項目名稱:</p> <p>Proposed Temporary Warehouse for Storage of Home Appliance and Furniture for a Period of 3 Years at Lots 1937 (Part), 1945 (Part), 1946 (Part), 1947 (Part), 1948, 1954 (Part), 1955, 1956 (Part), 1957 (Part) in D.D.117 & Adjoining Government Land, Yuen Long, N.T.</p>	<p>Drawing Title 圖目:</p> <p>Location Plan</p> <p>Drawing No. 圖號:</p> <p>Figure 2</p>	<p>Remarks 備註:</p> <p>●●● Vehicular access leading from Kung Um Road</p> <p>Scale 比例:</p> <p>1:7500</p>
--	--	---

(摘錄自申請人於 16.11.2022 呈交的申請書)
(Extract from Applicant's
Submission of 16.11.2022)

參考編號
REFERENCE No.
A/YL-TYST/1190

繪圖 DRAWING
A-1

N

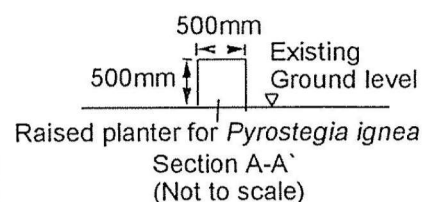


<p>Project 項目名稱:</p> <p>Proposed Temporary Warehouse for Storage of Home Appliance and Furniture for a Period of 3 Years at Lots 1937 (Part), 1945 (Part), 1946 (Part), 1947 (Part), 1948, 1954 (Part), 1955, 1956 (Part), 1957 (Part) in D.D.117 & Adjoining Government Land, Yuen Long, N.T.</p>	<p>Drawing Title 圖目:</p> <p>Proposed Layout Plan</p> <p>Drawing No. 圖號:</p> <p>Figure 3</p>	<p>Remarks 備註:</p> <p>Scale 比例:</p> <p>1:1000</p>
--	---	---

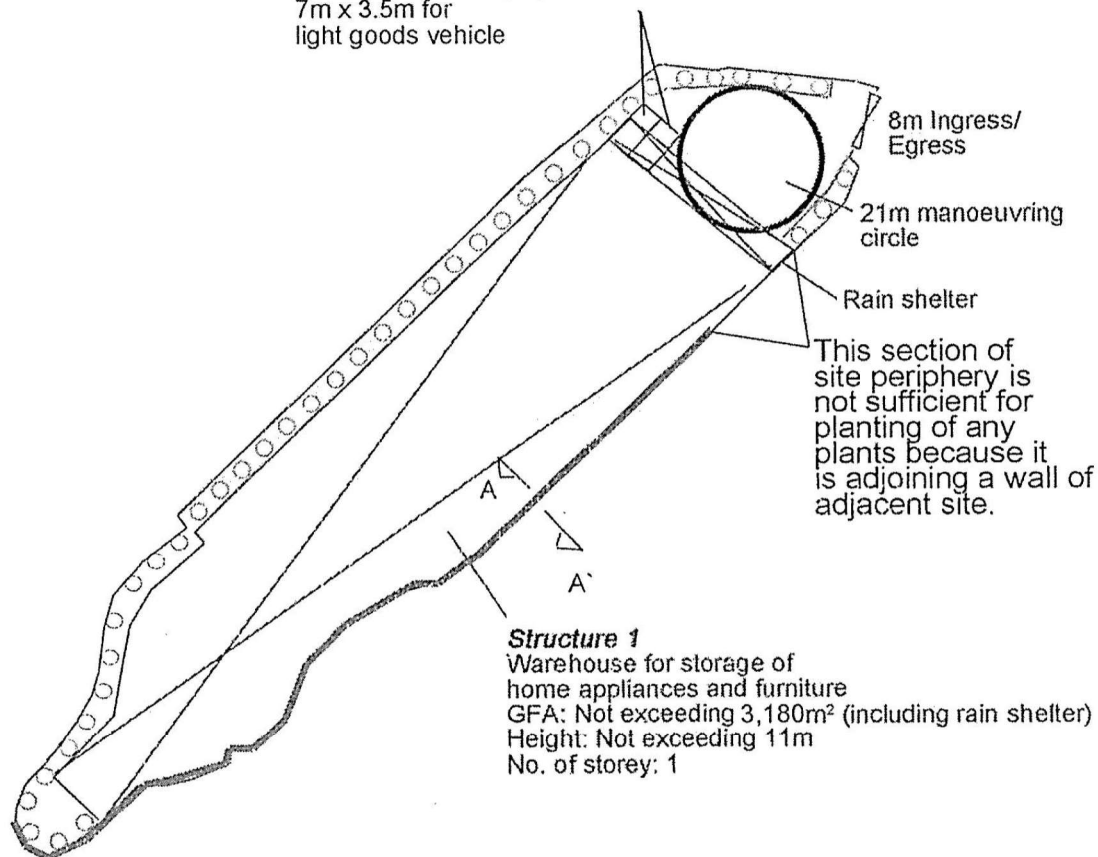
(摘錄自申請人於 16.11.2022 呈交的申請書)
(Extract from Applicant's Submission of 16.11.2022)

<p>參考編號 REFERENCE No. A/YL-TYST/1190</p>	<p>繪圖 DRAWING A-2</p>
--	---------------------------

N



2 loading/unloading spaces of
7m x 3.5m for
light goods vehicle



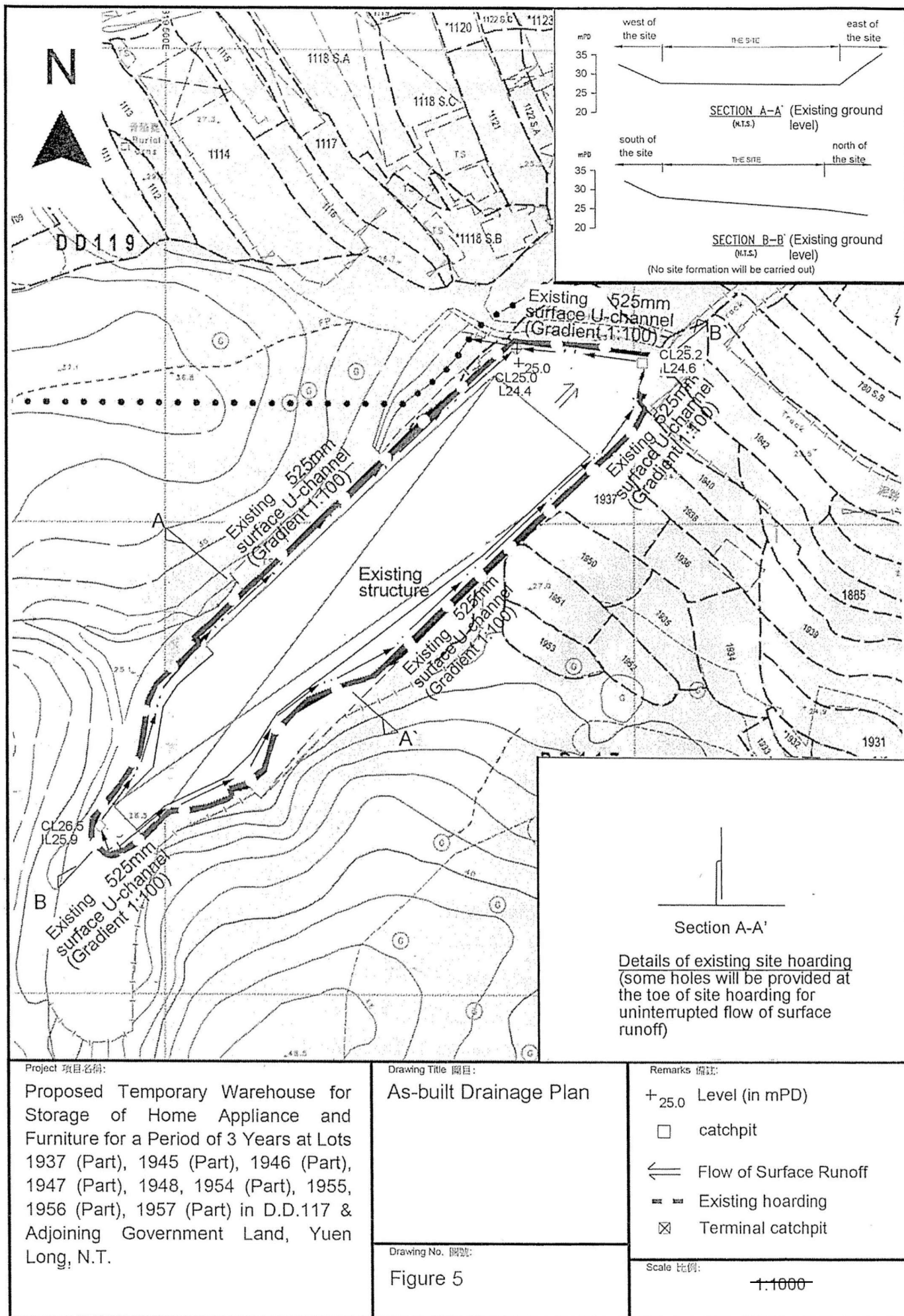
Tree	Approximate Height	Spacing
○ Proposed <i>Bauhinia blakeana</i> / <i>Cassia surattensis</i>	2.75m	4m
— Proposed <i>Pyrostegia ignea</i>	300mm	1,500mm

Project 項目名稱: Proposed Temporary Warehouse for Storage of Home Appliance and Furniture for a Period of 3 Years at Lots 1937 (Part), 1945 (Part), 1946 (Part), 1947 (Part), 1948, 1954 (Part), 1955, 1956 (Part), 1957 (Part) in D.D.117 & Adjoining Government Land, Yuen Long, N.T.	Drawing Title 圖目: Proposed Landscape & Tree Preservation Plan	Remarks 備註: — Proposed kerb at a minimum 1m away from the proposed trees
	Drawing No. 圖號: Figure 4	Scale 比例: 1:1000

(摘錄自申請人於 16. 11. 2022 呈交的申請書)
(Extract from Applicant's
Submission of 16.11.2022)

參考編號
REFERENCE No.
A/YL-TYST/1190

繪圖 DRAWING
A-3



F.S. NOTES:

1. GENERAL

- 1.1 FIRE SERVICE INSTALLATIONS SHALL BE PROVIDED IN ACCORDANCE WITH THE CODES OF PRACTICE FOR MINIMUM FIRE SERVICE INSTALLATIONS AND EQUIPMENT AND INSPECTION, TESTING AND MAINTENANCE OF INSTALLATIONS AND EQUIPMENT 2012 (COP 2012), FSD CIRCULAR LETTERS AND THE HONG KONG WATERWORKS STANDARD REQUIREMENTS.
- 1.2 ALL TUBES AND FITTINGS SHALL BE G.M.S. TO BS1387 MEDIUM GRADE WHERE PIPEWORK UP TO Ø150mm.
- 1.3 ALL TUBES AND FITTINGS SHALL BE DUCTILE IRON TO BS EN545 K12 WHERE PIPEWORK ABOVE Ø150mm.
- 1.4 ALL DRAIN PIPES SHALL BE DISCHARGED TO A CONSPICUOUS POSITION WITHOUT THE POSSIBILITY OF BEING SUBMERGED.
- 1.5 ALL PUDDLE FLANGES SHALL BE MADE OF DUCTILE IRON
- 1.6 THE AGGREGATE AREA OF OPENABLE WINDOWS NOT LESS THAN 6.25% OF THE FLOOR AREA OF THE STRUCTURE
- 1.7 VENTILATION/AIR CONDITIONING SYSTEM NOT TO BE PROVIDED.

2. HOSE REEL SYSTEM

- 2.1 NEW FIRE HOSE REEL SHALL BE PROVIDED AS INDICATED ON PLAN TO ENSURE THAT EVERY PART OF THE BUILDING CAN BE REACHED BY A LENGTH OF NOT MORE THAN 30m HOSE REEL TUBING.
- 2.2 THE WATER SUPPLY FOR HOSE REEL SYSTEM WILL BE FED FROM A NEW 2m³ F.S. FIBREGLASS WATER TANK VIA TWO HOSE REEL PUMPS (DUTY/STANDBY) LOCATED INSIDE FS PUMP ROOM AT EXTERNAL AREA.
- 2.3 HOSE REEL PUMPS SHALL BE STARTED BY ACTUATION OF ANY BREAKGLASS UNIT FITTED ASIDE EACH HOSE REEL SETS
- 2.4 ALL FIRE HOSE REEL OUTLETS SHOULD BE HOUSED IN GLASS FRONTED CABINET SECURED UNDER LOCK & KEY.
- 2.5 ALL FIRE HOSE REEL SHOULD BE PROVIDED WITH FSD APPROVED TYPE INSTRUCTION PLATE & WSD WARNING PLATE
- 2.6 SECONDARY ELECTRICITY SUPPLY DIRECTLY TEE OFF BEFORE CLP'S INCOMING MAIN SWITCH SHALL BE PROVIDED FOR THE FH/HR PUMPS.

3. AUTOMATIC SPRINKLER SYSTEM

- 3.1 NEW AUTOMATIC SPRINKLER SYSTEM SHALL BE PROVIDED AND INSTALLED IN ACCORDANCE WITH LPC RULES FOR AUTOMATIC SPRINKLER INSTALLATIONS INCORPORATING BS EN 12945: 2003 (INCLUDING TECHNICAL BULLETINS, NOTES, COMMENTARY AND RECOMMENDATIONS) AND FSD CIRCULAR LETTER, NOTES, COMMENTARY AND RECOMMENDATIONS) AND FSD CIRCULAR LETTER NO. 3/2006 AND 3/2012. THE CLASSIFICATION OF THE OCCUPANCIES WILL BE ORDINARY HAZARD GROUP III.
- 3.2 ONE NEW 135m³ SPRINKLER WATER TANK WILL BE PROVIDED AS INDICATED ON PLAN. THE TOWN MAIN WATER SUPPLY WILL BE FED FROM SINGLE END.
- 3.3 TWO NEW SPRINKLER PUMPS (DUTY/STANDBY) AND ONE JOCKEY PUMP SHALL BE PROVIDED IN FS PUMP ROOM LOCATED AT EXTERNAL AREA.
- 3.4 NEW SPRINKLER CONTROL VALVE SET AND SPRINKLER INLET SHALL BE PROVIDED AS INDICATED ON PLAN.
- 3.5 A TEST VALVE SHALL BE PROVIDED FOR EACH ZONE OF SPRINKLER PIPE. THIS VALVE SHALL BE AT A CONSPICUOUS POSITION THAT WATER CAN BE DRAINED AWAY EASILY.
- 3.6 ALL SUBSIDIARY STOP VALVES TO BE ELECTRIC MONITORING TYPE.
- 3.7 ALL ELECTRIC TYPE VALVES SHOULD GIVE VISUAL SIGNALS TO FIRE SERVICE MAIN SUPERVISORY CONTROL PANEL TO INDICATE THE STATUS (OPEN/CLOSE) OF THE VALVES.
- 3.8 SECONDARY ELECTRICITY SUPPLY DIRECTLY TEE OFF BEFORE CLP'S INCOMING MAIN SWITCH SHALL BE PROVIDED FOR THE SPRINKLER PUMPS.
- 3.9 THE SPRINKLER SYSTEM DESIGN IS BASED ON THE FOLLOWINGS:
HAZARD CLASS : ORDINARY HAZARD GROUP III
TYPE OF STORAGE : POST-PALLET (S12)
STORAGE CATEGORY : CATEGORY I
MAXIMUM STORAGE HEIGHT : 3.5m
SPRINKLER PROTECTION : CEILING PROTECTION ONLY

4. FIRE ALARM SYSTEM

- 4.1 NEW FIRE ALARM SYSTEM SHALL BE PROVIDED IN ACCORDANCE WITH BS 5839-1:2002 +A2:2008 AND FSD CIRCULAR LETTERS NO. 1/2009 & 3/2010.
- 4.2 NEW BREAKGLASS UNITS AND FIRE ALARM BELLS SHALL BE PROVIDED AT ALL NEW FIRE HOSE REEL POINTS. THE FIRE ALARM INTALLATION WILL BE INTEGRATED WITH THE HOSE REEL SYSTEM.

5. EMERGENCY LIGHTING

- 5.1 EMERGENCY LIGHTING SHALL BE PROVIDED IN ACCORDANCE WITH 'BS 5266-PART 1 :2011 AND BS EN 1838 :2013', COVERING ALL AREA. EMERGENCY LIGHTINGS SHALL BE BACKED UP BY BUILT-IN BATTERY AND CAPABLE OF MAINTAINING FUNCTION OF NOT LESS THAN 2 HOURS IN CASE OF POWER FAILURE

6. EXIT SIGN

- 6.1 ALL EXIT SIGNS/DIRECTIONAL EXIT SIGNS SHALL BE PROVIDED IN ACCORDANCE WITH 'BS 5266-PART 1 :2011 AND FSD CIRCULAR LETTER NO. 5/2008, FOR THE BUILDING. EXIT SIGNS/DIRECTIONAL EXIT SIGNS SHALL BE BACKED UP BY BUILT-IN BATTERY AND CAPABLE OF MAINTAINING FUNCTION OF NOT LESS THAN 2 HOURS IN CASE OF POWER FAILURE.

7. PORTABLE APPLIANCES

- 7.1 PORTABLE HAND OPERATED APPLIANCES SHALL BE PROVIDED AS INDICATED ON PLAN.

LEGEND

 HOSE REEL	 EMERGENCY LIGHT	 5KG CO2 FIRE EXTINGUISHER	 SPRINKLER HEAD (ON PLAN)
 BREAK GLASS UNIT	 EXIT SIGN	 SPRINKLER CONTROL VALVE SET	 PUMP SET
 FIRE ALARM BELL	 SUBSIDIARY VALVE / FLOW SWITCH	 SPRINKLER INLET	

Structure 3

F.S. pump room

GFA: Not exceeding 20m²

Height: Not exceeding 3m

No. of storey: 1

2000 LIT. FIBREGLASS
F.S. WATER TANK

Pump Room
For FSIs

Structure 4

F.S water tank

GFA: Not exceeding 4m²

Height: Not exceeding 3m

No. of storey: 1

135000 LIT. RCC
SPRINKLER WATER TANK

Water Tank
Room For FSIs

Structure 5

Toilet

GFA: Not exceeding 20m²

Height: Not exceeding 3m

No. of storey: 1

8m wide
Ingress/Egress

21m diameter
manoeuvring
circle

Structure 2

Site office

GFA: Not exceeding 40m²

Height: Not exceeding 6m

No. of storey: 2

Structure 1

Warehouse for storage of
home appliance and furniture

GFA: Not exceeding 3,180m² (including rain shelter)

Height: Not exceeding 11m

No. of storey: 1

Structure 1 Openable Windows Calculation

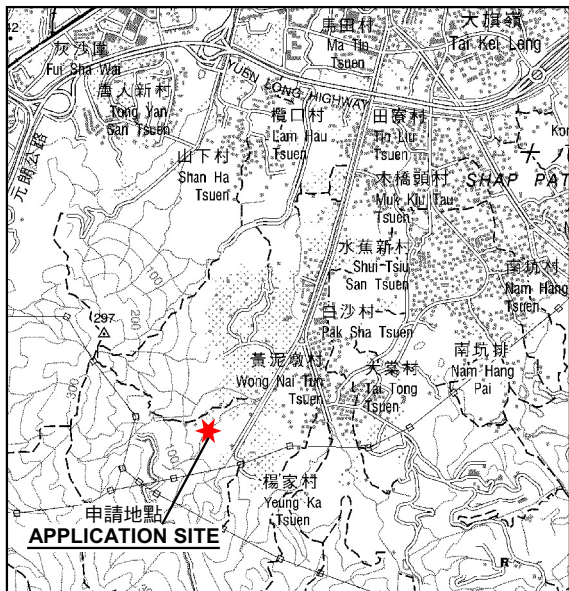
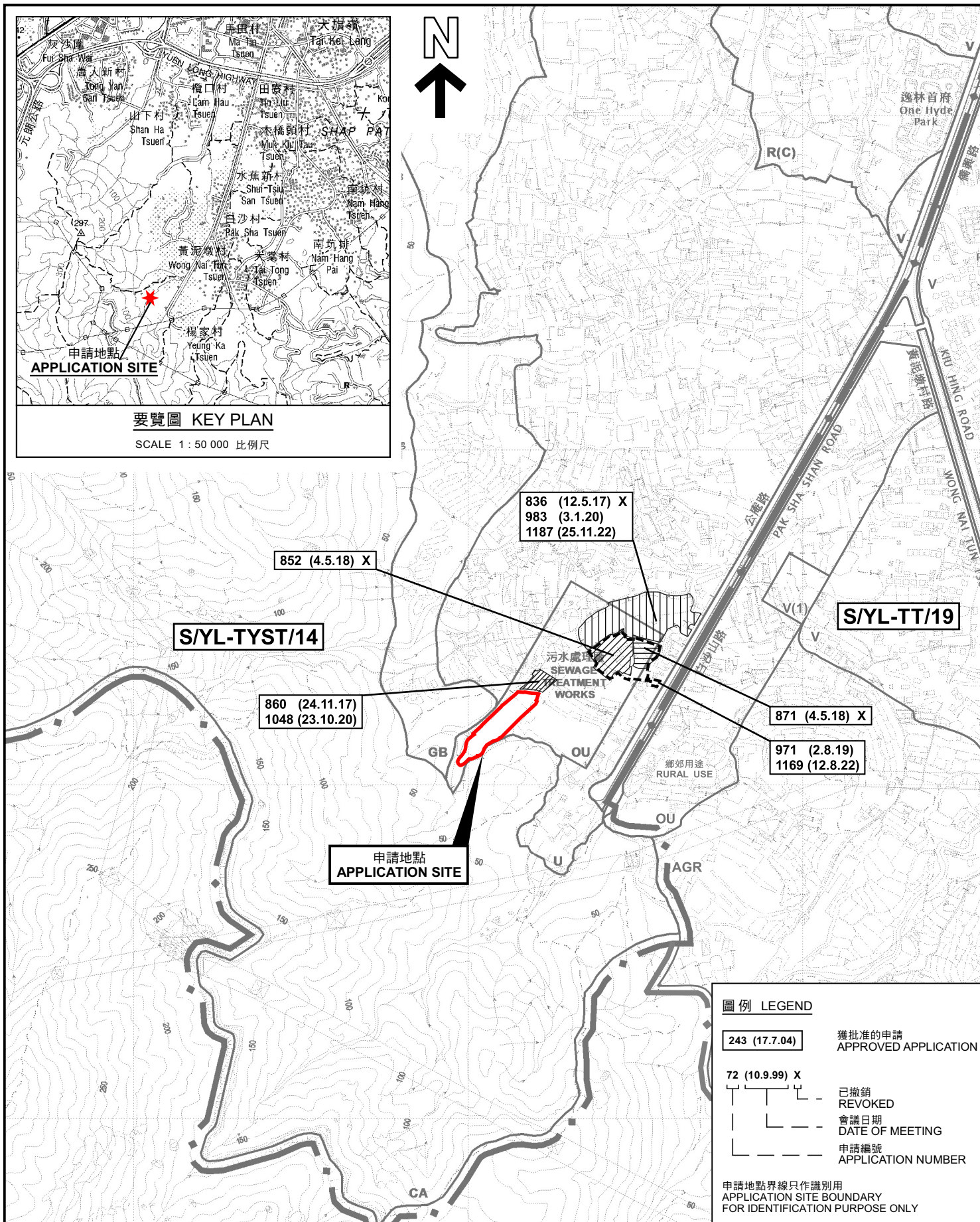
Area of Structure 1 = 3180 sq.m.
Area of opening 1 = 5m(W) x 7m(H) = 35 sq.m.
Area of opening 2 = 5m(W) x 7m(H) = 35 sq.m.
Area of opening 3 = 5m(W) x 7m(H) = 35 sq.m.
Area of opening 4 = 5m(W) x 7m(H) = 35 sq.m.
Area of opening 5 = 5m(W) x 7m(H) = 35 sq.m.
Area of opening 6 = 5m(W) x 7m(H) = 35 sq.m.
Total openable window area = 35 + 35 + 35 + 35 + 35 + 35 = 210 sq.m.
= 6.6% of floor area

PROJECT : Proposed Temporary Warehouse for Storage of Home Appliance and Furniture for a Period of 3 Years at Lots 1937 (Part), 1945 (Part), 1946 (Part), 1947 (Part), 1948,1954 (Part), 1955, 1956 (Part), 1957 (Part), in D.D. 117 & Adjoining Government Land , Yuen Long, N.T.	DRAWING TITLE : F.S. Notes, Legend, Fire Service Installation Layout Plan	ARCHITECT : REV DESCRIPTION DATE	CONSULTANT :	FIRE SERVICE CONTRACTOR : Century Fire Service Engineering Co., Ltd.	NAME C.K.NG DATE 04 Jan 2023 DRAWING NO : FS-02 REV. 0 SCALE : 1:350 @ (A1) SOURCE : B.O.O. Ref. BD F.S.D. Ref. FP
---	--	-------------------------------------	--------------	--	--

(摘錄自申請人於 9. 1. 2023 呈交的進一步資料)
(Extract from Applicant's Further
Information Submitted on 9.1.2023)

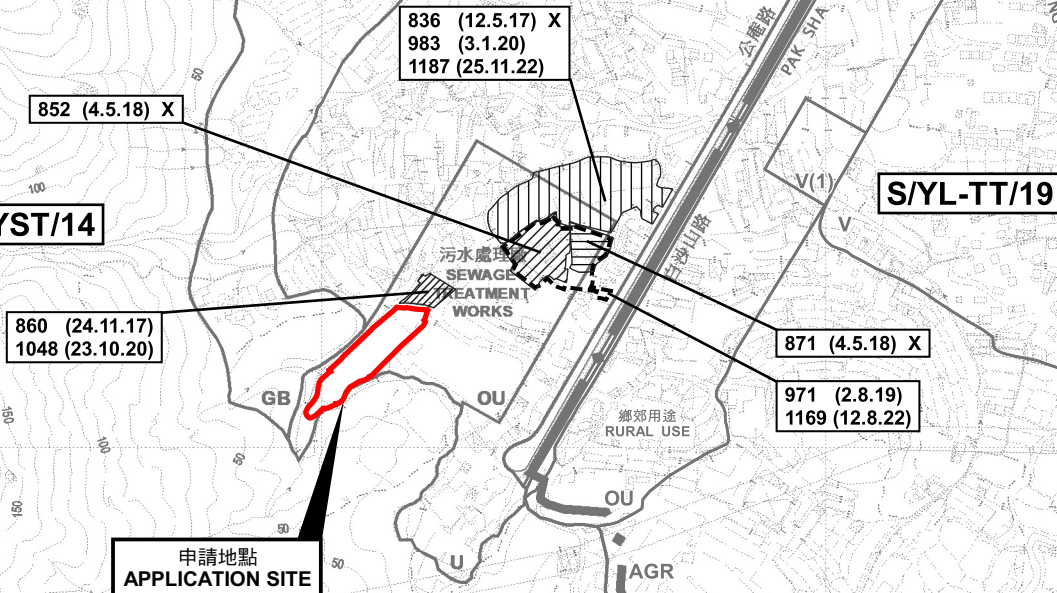
參考編號
REFERENCE No.
A/YL-TYST/1190

繪圖 DRAWING
A-5



要覽圖 KEY PLAN

SCALE 1 : 50 000 比例尺



圖例 LEGEND

- 243 (17.7.04) 獲批准的申請 APPROVED APPLICATION
- 72 (10.9.99) X 已撤銷 REVOKED
- 會議日期 DATE OF MEETING
- 申請編號 APPLICATION NUMBER

申請地點界線只作識別用
APPLICATION SITE BOUNDARY
FOR IDENTIFICATION PURPOSE ONLY

位置圖及同類申請 LOCATION PLAN WITH SIMILAR APPLICATIONS

臨時貨倉存放家庭電器及傢俱(為期3年)
元朗唐人新村丈量約份第117約地段第1937號(部分)、第1945號(部分)、
第1946號(部分)、第1947號(部分)、第1948號、第1954號(部分)、第1955號、
第1956號(部分)及第1957號(部分)和毗連政府土地
TEMPORARY WAREHOUSE FOR STORAGE
OF HOME APPLIANCE AND FURNITURE FOR A PERIOD OF 3 YEARS
LOTS 1937 (PART), 1945 (PART), 1946 (PART), 1947 (PART), 1948, 1954 (PART), 1955,
1956 (PART) AND 1957 (PART) IN D.D. 117 AND ADJOINING GOVERNMENT LAND,
TONG YAN SAN TSUEN, YUEN LONG
SCALE 1 : 7 500 比例尺

米 100 0 100 200 300 米
METRES

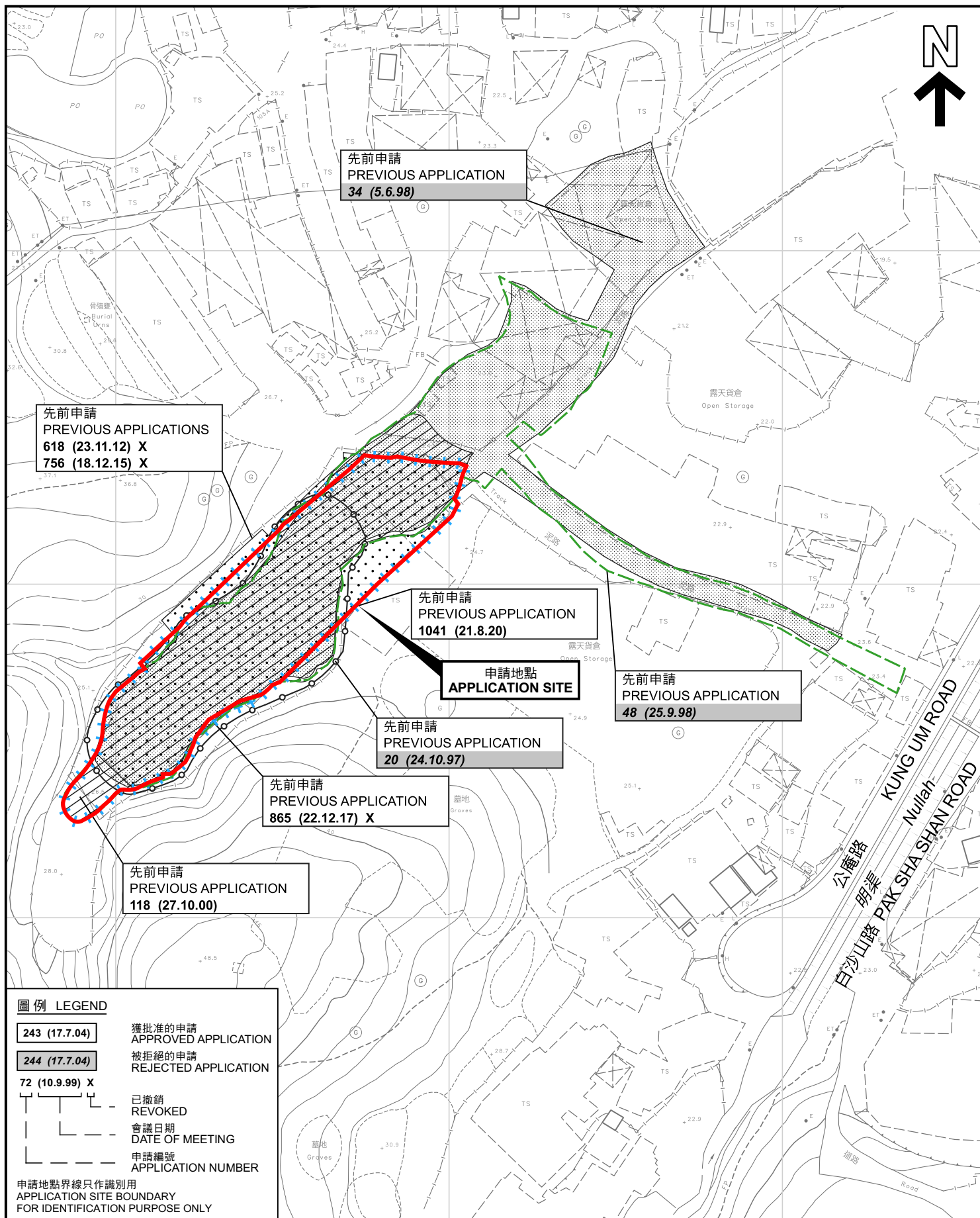
規劃署
PLANNING
DEPARTMENT



參考編號
REFERENCE No.
A/YL-TYST/1190

圖 PLAN
A-1a

本摘要圖於2023年1月6日擬備，
所根據的資料為於2021年8月10日
核准的分區計劃大綱圖編號 S/YL-TYST/14
EXTRACT PLAN PREPARED ON 6.1.2023
BASED ON OUTLINE ZONING PLAN No.
S/YL-TYST/14 APPROVED ON 10.8.2021



先前申請圖 PREVIOUS APPLICATIONS PLAN

臨時貨倉存放家庭電器及傢俱(為期3年)
元朗唐人新村丈量約份第117約地段第1937號(部分)、第1945號(部分)、
第1946號(部分)、第1947號(部分)、第1948號、第1954號(部分)、第1955號、
第1956號(部分)及第1957號(部分)和毗連政府土地
TEMPORARY WAREHOUSE FOR STORAGE
OF HOME APPLIANCE AND FURNITURE FOR A PERIOD OF 3 YEARS
LOTS 1937 (PART), 1945 (PART), 1946 (PART), 1947 (PART), 1948, 1954 (PART), 1955,
1956 (PART) AND 1957 (PART) IN D.D. 117 AND ADJOINING GOVERNMENT LAND,
TONG YAN SAN TSUEN, YUEN LONG
SCALE 1:1 500 比例尺

米 25 0 25 50 米
METRES

規劃署
PLANNING
DEPARTMENT



參考編號
REFERENCE No.
A/YL-TYST/1190

圖 PLAN
A-1b

本摘要圖於2022年12月19日擬備，所根據的
資料為測量圖編號 6-NW-23B、23D、24A及24C
EXTRACT PLAN PREPARED ON
19.12.2022 BASED ON SURVEY SHEETS
No. 6-NW-23B, 23D, 24A & 24C



圖例 LEGEND

 申請地點(界線只作識別用)
APPLICATION SITE
(BOUNDARY FOR IDENTIFICATION
PURPOSE ONLY)

本摘要圖於2022年12月19日擬備，所根據的資料為地政總署於2022年2月14日拍得的航攝照片編號 E147920C
EXTRACT PLAN PREPARED ON 19.12.2022
BASED ON AERIAL PHOTO No.
E147920C TAKEN ON 14.2.2022 BY
LANDS DEPARTMENT

航攝照片 AERIAL PHOTO

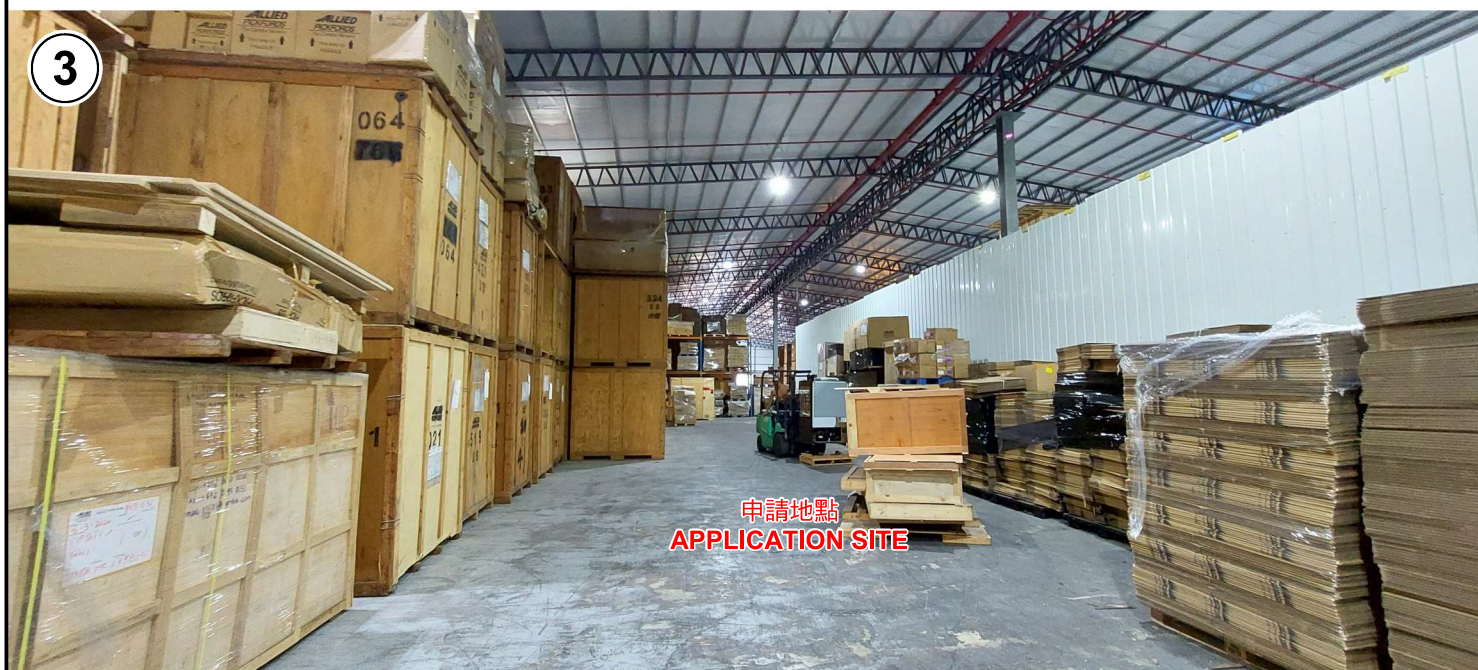
臨時貨倉存放家庭電器及傢俱(為期3年)
元朗唐人新村丈量約份第117約地段第1937號(部分)、第1945號(部分)、
第1946號(部分)、第1947號(部分)、第1948號、第1954號(部分)、第1955號、
第1956號(部分)及第1957號(部分)和毗連政府土地
TEMPORARY WAREHOUSE FOR STORAGE
OF HOME APPLIANCE AND FURNITURE FOR A PERIOD OF 3 YEARS
LOTS 1937 (PART), 1945 (PART), 1946 (PART), 1947 (PART), 1948, 1954 (PART), 1955,
1956 (PART) AND 1957 (PART) IN D.D. 117 AND ADJOINING GOVERNMENT LAND,
TONG YAN SAN TSUEN, YUEN LONG

規劃署
PLANNING
DEPARTMENT



參考編號
REFERENCE No.
A/YL-TYST/1190

圖 PLAN
A-3



實地照片 SITE PHOTOS

本圖於2022年12月19日擬備，所根據的資料為攝於2022年11月25日的實地照片
PLAN PREPARED ON 19.12.2022
BASED ON SITE PHOTOS
TAKEN ON 25.11.2022

臨時貨倉存放家庭電器及傢俱(為期3年)
元朗唐人新村丈量約份第117約地段第1937號(部分)、第1945號(部分)、
第1946號(部分)、第1947號(部分)、第1948號、第1954號(部分)、第1955號、
第1956號(部分)及第1957號(部分)和毗連政府土地
TEMPORARY WAREHOUSE FOR STORAGE
OF HOME APPLIANCE AND FURNITURE FOR A PERIOD OF 3 YEARS
LOTS 1937 (PART), 1945 (PART), 1946 (PART), 1947 (PART), 1948, 1954 (PART), 1955,
1956 (PART) AND 1957 (PART) IN D.D. 117 AND ADJOINING GOVERNMENT LAND,
TONG YAN SAN TSUEN, YUEN LONG

規劃署
PLANNING
DEPARTMENT



參考編號
REFERENCE No.
A/YL-TYST/1190

圖 PLAN
A-4