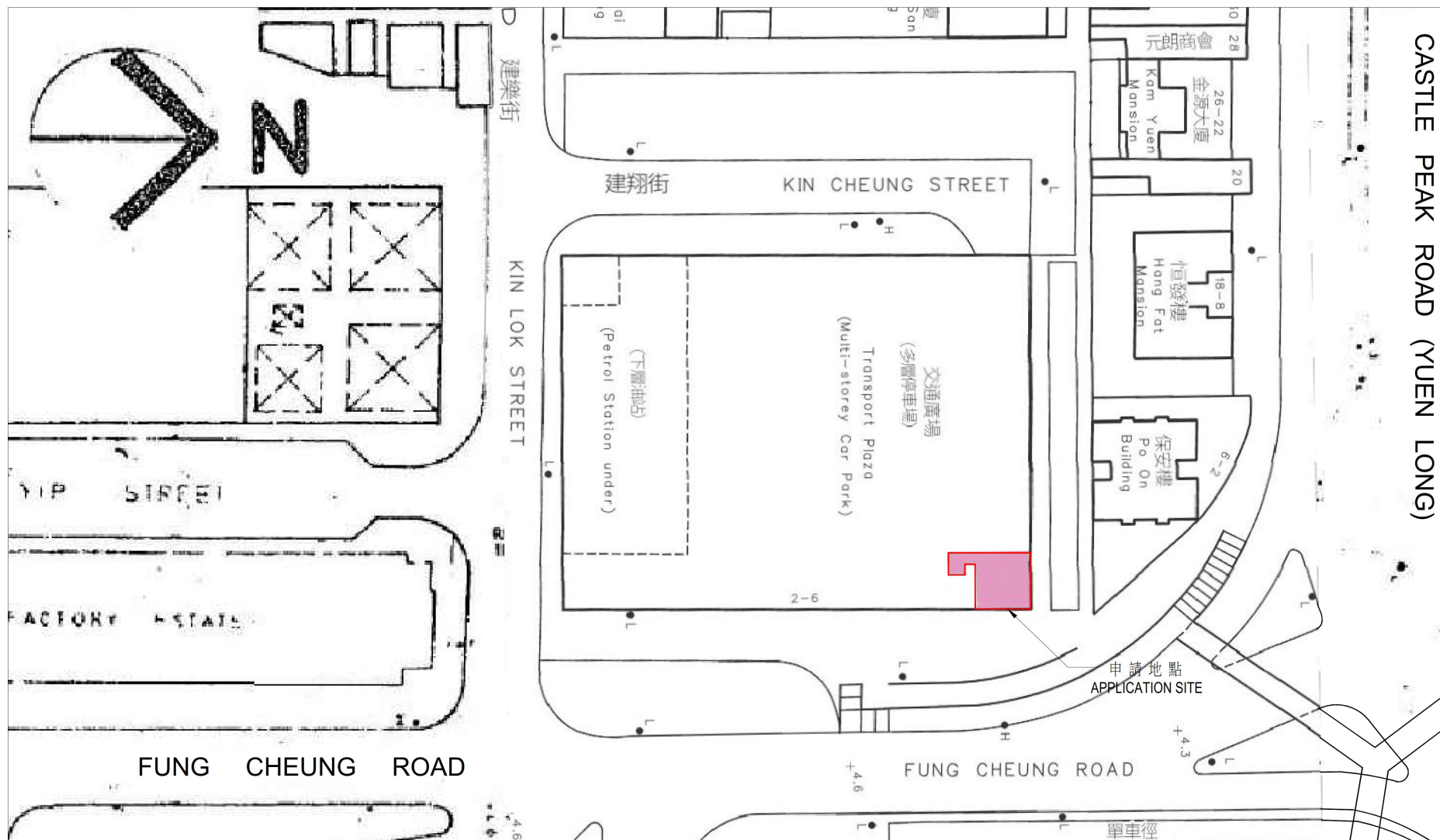


# CASTLE PEAK ROAD (YUEN LONG)



BLOCK PLAN FOR TRANSPORT PLAZA  
SCALE: 1:500

aaaenpl  
M: +852 5444 2737  
F: +852 2177 0901 E: general@aaaenpl.com  
A: UNIT 14, 6/F, WAH SHING CENTRE,  
11 SHING YIP STREET, KWUN TONG, HONG KONG

TITLE  
BLOCK PLAN

PROJECT  
PROPOSED TUTORIAL SCHOOL AT  
G/F OF TRANSPORT PLAZA  
2-6, FUNG CHEUNG ROAD, YUEN LONG, N.T. - Y.L.T.L.348

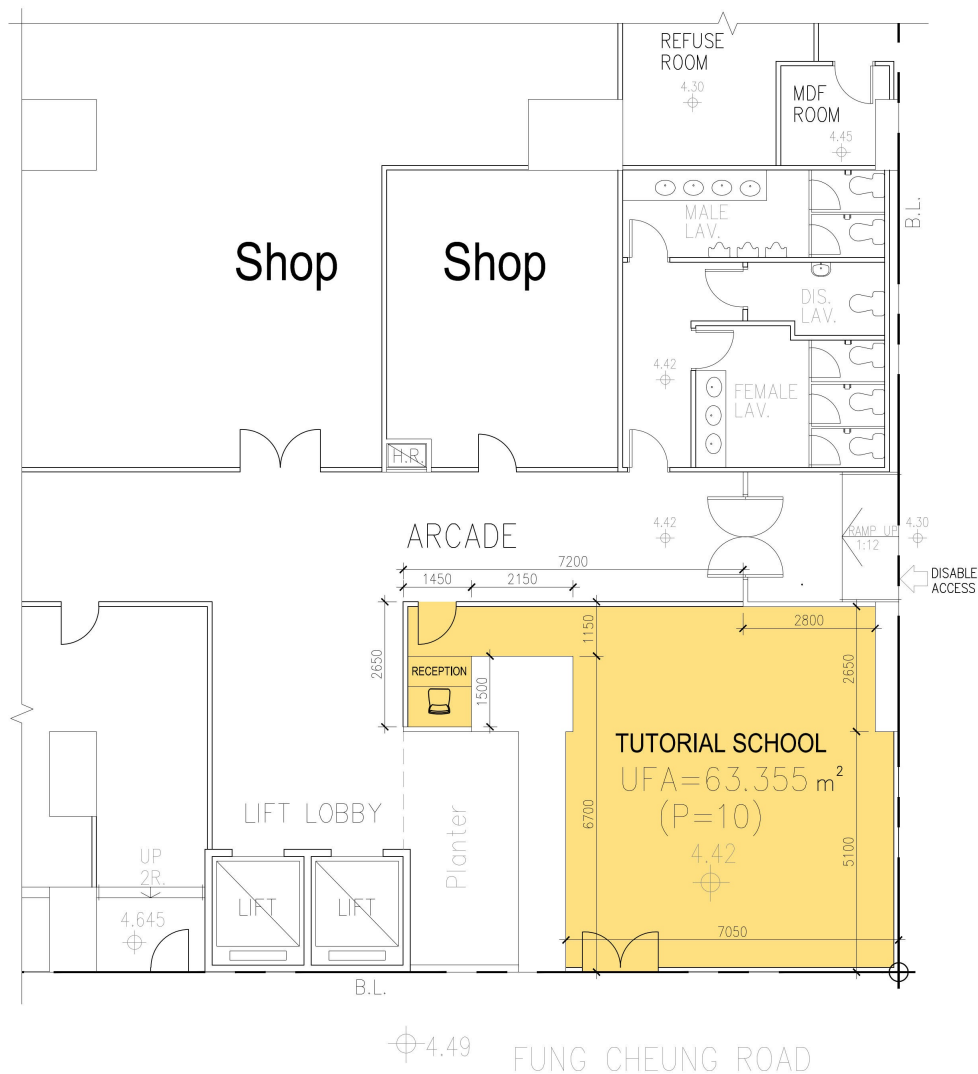
A 1 8 0 7 7 B

Size: - A3  
Scale: - AS SHOWN  
Date: - 31/03/22  
DWG. NO. A18077B/S/01

(摘錄自申請人於 20.4.2022 呈交的申請書)  
(Extract from Applicant's  
Submission of 20.4.2022)

參考編號  
REFERENCE No.  
A/YL/292

繪圖 DRAWING  
A-1



4.49 FUNG CHEUNG ROAD

PART GROUND FLOOR PLAN  
SCALE: 1:100

#### CAPACITY OF NEW TUTORIAL SCHOOL

	TOTAL POPULATION	MALE/ FEMALE RATIO	MALE NO.	FEMALE NO.
STUDENT	8	1:1	4	4
STAFF	2	1:1	1	1

#### SCHEDULE OF SANITARY FITMENTS

LOCATION OF FLOOR	USE	TOTAL USABLE FLOOR AREA PER STOREY (m²)	FACTOR (m²/P)	TOTAL CAPACITY (PERSON)	RATIO OF M:F (1:1)	SANITARY FITMENT REQUIRED			SANITARY FITMENT PROVIDED		
						W.C.	BASIN	URINAL	W.C.	BASIN	URINAL
GROUND FLOOR	SHOP / STORE	877.923	814.568	15	59.55	3	4	3	3	4	3
	FAST FOOD	186.239	1.5	145	210/504	4	4	—	4	4	—
	NEW TUTORIAL SCHOOL	63.355	NO. OF SEATS	10	—	—	—	—	1	1	2
	PETROL FILLING STATION	—	—	—	—	—	—	—	1	1	—

#### FIRE RESISTANCE REQUIREMENT FOR ELEMENTS OF CONSTRUCTION

LOCATION OF FLOOR	USE	CLASS	COMPARTMENT OF BUILDING FLOOR AREA (m²)	VOLUME (m³)	REQUIRED F.R.P. (HRS)	MINIMUM DIMENSION OF ELEMENTS OF CONSTRUCTION			
						R.C.C. SLAB THICKNESS	R.C.C. BEAM THICKNESS	R.C.C. COLUMN THICKNESS	R.C.C. COLUMN COVER TO STEEL
GROUND FLOOR	PETROL FILLING STATION	—	811.580	5129.186	4	150	25	—	65
	SHOP	4b	1,931.735	6,954.246	2	150	25	—	65
	TRANSFORMER ROOM	8	—	—	2	150	25	—	65
	NEW TUTORIAL SCHOOL	5b	63.355	228.078	2	150	25	—	65

#### LOADING INTENSITY

LOCATION OF FLOOR	USE	EXISTING LIVE LOAD (kPa)	NEW LIVE LOAD (kPa)
GROUND FLOOR	NEW TUTORIAL SCHOOL	5.0 (FOR SHOP USE)	3.0 (FOR CLASSROOM USE)

aaaenpl M: +852 5444 2737  
F: +852 2177 0901 E: general@aaaenpl.com  
A: UNIT 14, 4/F, WAH SHING CENTRE,  
11 SHING YIP STREET, KWUN TONG, HONG KONG

-/-

-/-

TITLE  
PART GROUND FLOOR PLAN  
AND SCHEDULE

PROJECT  
PROPOSED TUTORIAL SCHOOL AT  
G/F OF TRANSPORT PLAZA  
2-6, FUNG CHEUNG ROAD, YUEN LONG, N.T. - Y.L.T.L.348

A 1 8 0 7 7 B

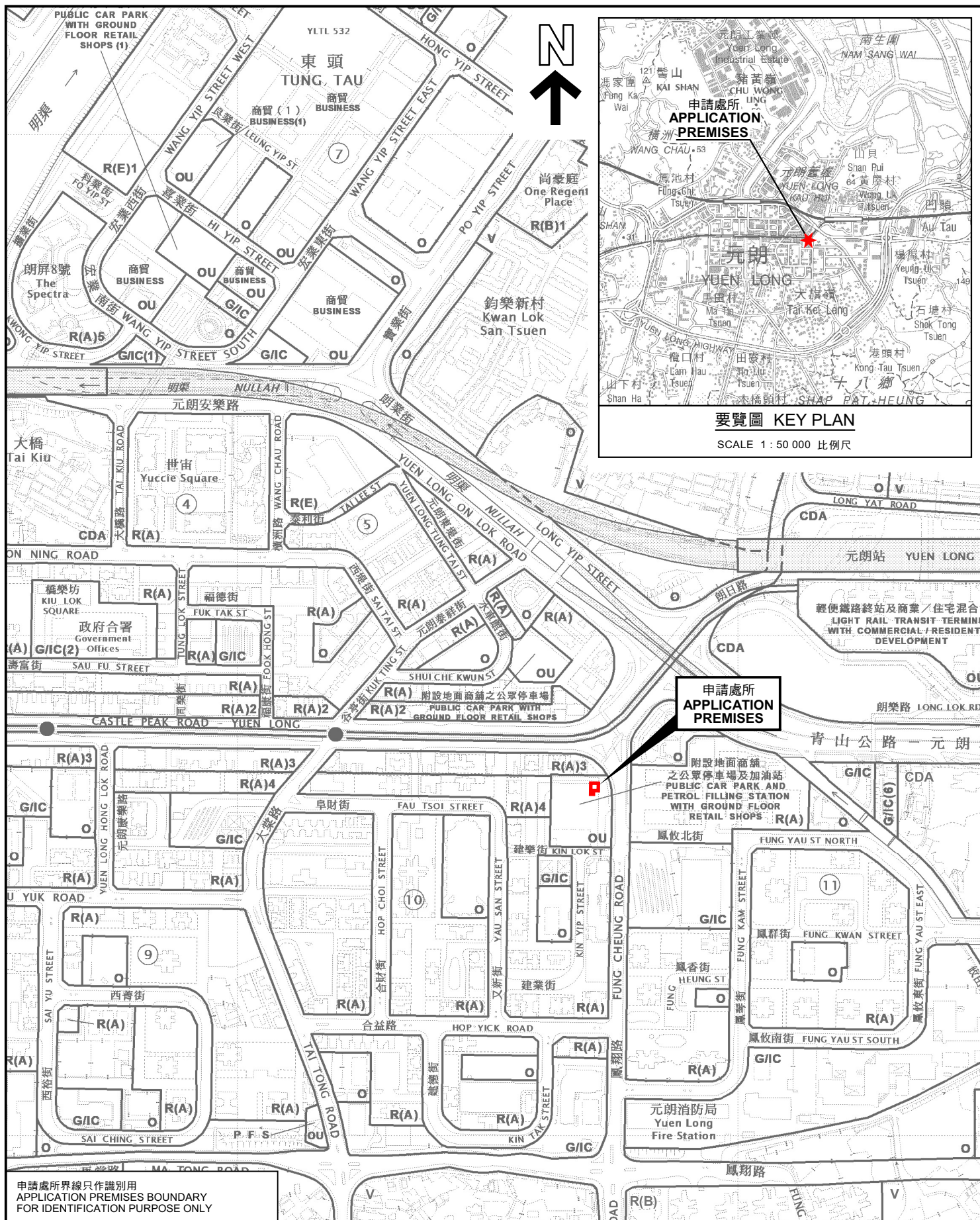
Size: — A3  
Scale: — AS SHOWN  
Date: — 19/01/22  
DWG. NO. A18077B/S/03

(摘錄自申請人於 20. 4. 2022 呈交的申請書)  
(Extract from Applicant's  
Submission of 20.4.2022)

參考編號  
REFERENCE No.  
A/YL/292

繪圖 DRAWING  
A-2





### 位置圖 LOCATION PLAN

擬議學校(補習學校)  
元朗鳳翔路2-6號交通廣場地下33及34號舖  
PROPOSED SCHOOL (TUTORIAL SCHOOL)  
SHOPS 33 AND 34, G/F, TRANSPORT PLAZA,  
2-6 FUNG CHEUNG ROAD, YUEN LONG

本摘要圖於2022年5月11日擬備，  
所根據的資料為於2021年12月7日  
核准的分區計劃大綱圖編號 S/YL/25  
EXTRACT PLAN PREPARED ON 11.5.2022  
BASED ON OUTLINE ZONING PLAN No.  
S/YL/25 APPROVED ON 7.12.2021

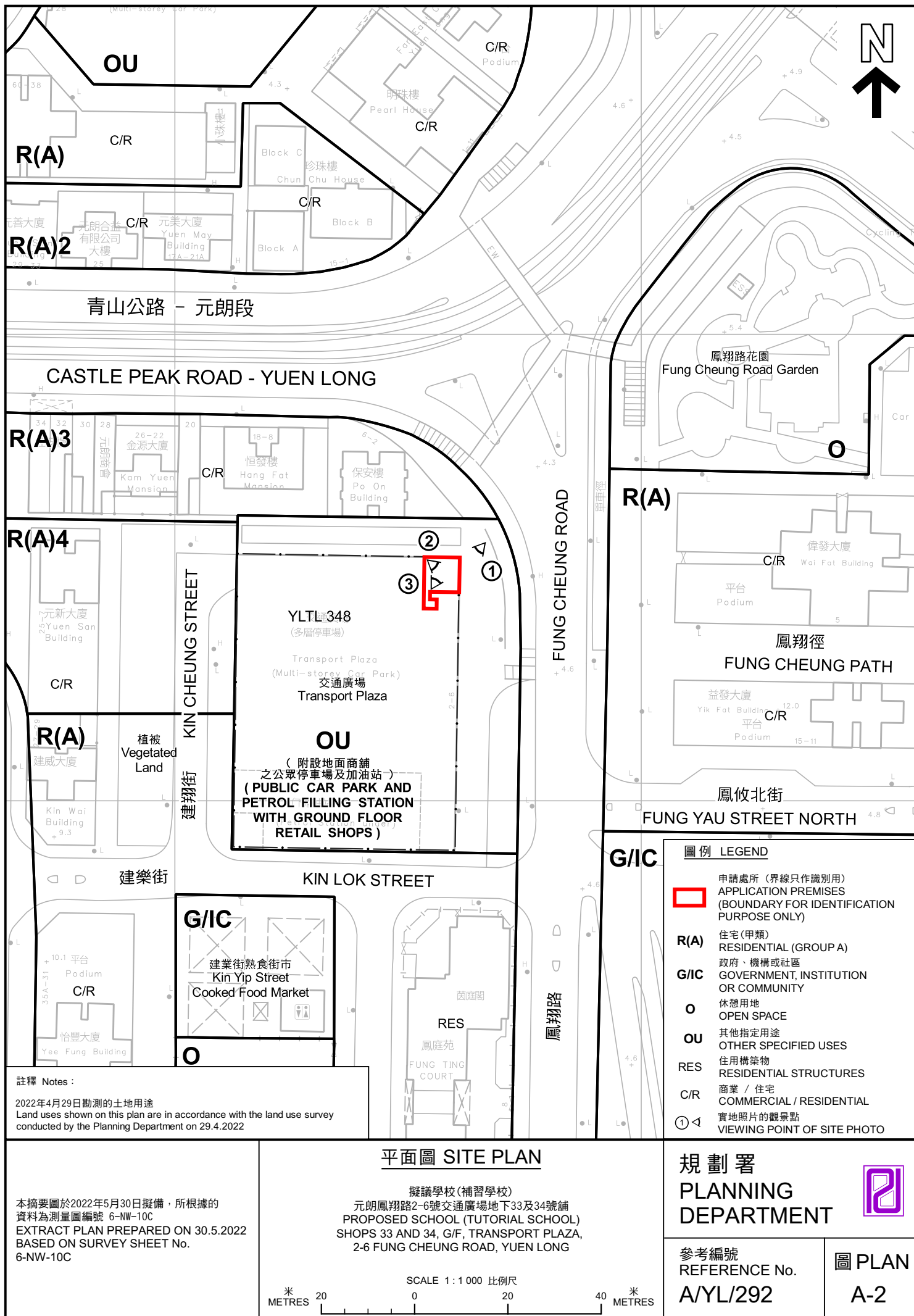
SCALE 1 : 5 000 比例尺  
METRES 100 0 100 200 METRES

規劃署  
PLANNING  
DEPARTMENT



參考編號  
REFERENCE No.  
A/YL/292

圖 PLAN  
A-1







青山公路 - 元朗段

CASTLE PEAK ROAD - YUEN LONG

FUNG CHEUNG ROAD

交通廣場  
Transport Plaza

鳳攸北街

FUNG YAU STREET NORTH

建樂街

KIN LOK STREET

鳳琴街體育館  
Fung Kam Street  
Sports Centre

YAU SAN STREET

KIN YIP STREET

鳳翔路

又新街

建業街

#### 圖例 LEGEND



申請處所(界線只作識別用)  
APPLICATION PREMISES  
(BOUNDARY FOR IDENTIFICATION  
PURPOSE ONLY)

#### 航攝照片 AERIAL PHOTO

擬議學校(補習學校)  
元朗鳳翔路2-6號交通廣場地下33及34號舖  
PROPOSED SCHOOL (TUTORIAL SCHOOL)  
SHOPS 33 AND 34, G/F, TRANSPORT PLAZA,  
2-6 FUNG CHEUNG ROAD, YUEN LONG

規劃署  
PLANNING  
DEPARTMENT



參考編號  
REFERENCE No.  
A/YL/292

圖 PLAN  
A-3

本摘要圖於2022年5月11日擬備，所根據的資料為地政總署於2021年1月19日拍得的航攝照片編號 E130379C  
EXTRACT PLAN PREPARED ON 11.5.2022  
BASED ON AERIAL PHOTO No.  
E130379C TAKEN ON 19.1.2021 BY  
LANDS DEPARTMENT





申請處所界線只作識別用 APPLICATION PREMISES BOUNDARY FOR IDENTIFICATION PURPOSE ONLY

## 實地照片 SITE PHOTOS

擬議學校(補習學校)  
元朗鳳翔路2-6號交通廣場地下33及34號舖  
PROPOSED SCHOOL (TUTORIAL SCHOOL)  
SHOPS 33 AND 34, G/F, TRANSPORT PLAZA,  
2-6 FUNG CHEUNG ROAD, YUEN LONG

規劃署  
PLANNING  
DEPARTMENT



參考編號  
REFERENCE No.  
A/YL/292

圖 PLAN  
A-4

本圖於2022年5月30日擬備，所根據的  
資料為攝於2022年4月29日的實地照片  
PLAN PREPARED ON 30.5.2022  
BASED ON SITE PHOTOS  
TAKEN ON 29.4.2022