

Remark: 'Shop & Services' use on G/F is always permitted according to the Notes of OZP, whereas 'Eating Place' and 'School' (Tutorial School only) uses have been previously approved on part of G/F under Planning Application Nos. A/YL/5 and A/YL/292 respectively. Please refer to Annex A for their respective extent on G/F.

Legend	
YLTL No. 348 Boundary	
Application Premises Boundary on G/F	

ARK

Title

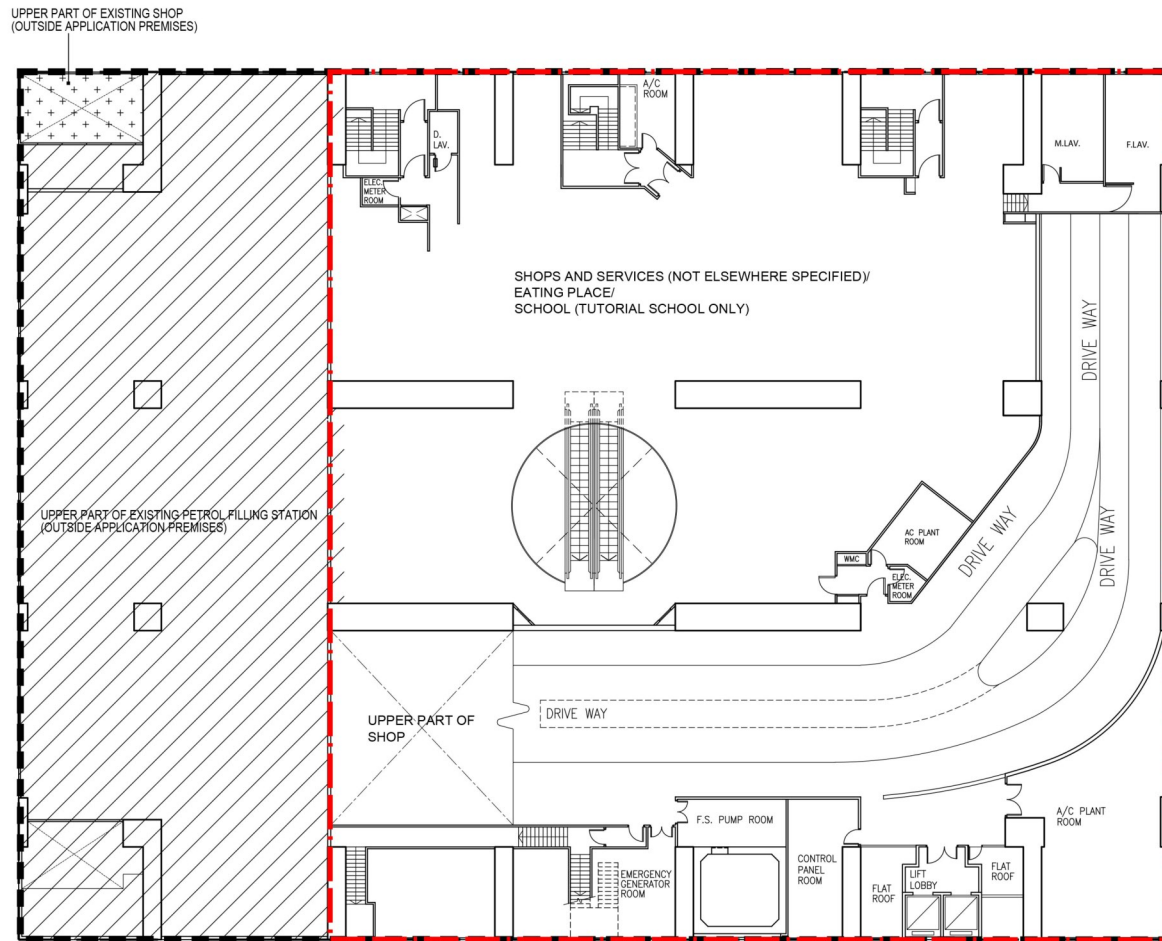
Indicative Floor Plan (G/F)

Checked	DH	Drawn	PW
Rev	0	Date	Oct 2022
Scale	N/A	Figure	3.1

(摘錄自申請人於 13. 10. 2022 呈交的申請書)
(Extract from Applicant's
Submission of 13.10.2022)

參考編號
REFERENCE No.
A/YL/296

繪圖 DRAWING
A-1



Remark: 'Remark: 'Eating Place' use has been previously approved for the whole of M/F under Planning Application No. A/YL/5. Please refer to Annex A for its extent on M/F.

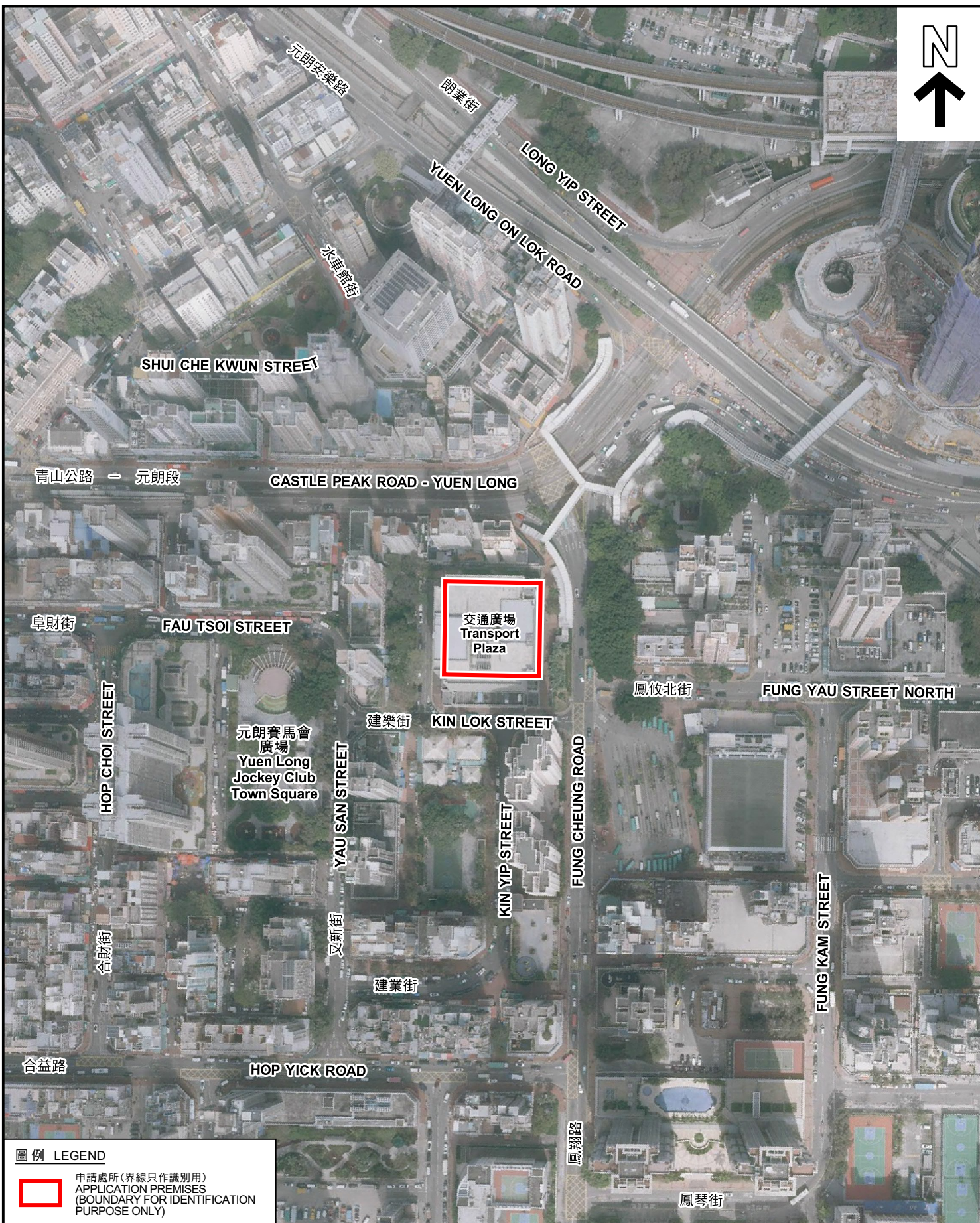
Legend	
YLTL No. 348 Boundary	
Application Premises Boundary on M/F	

ARK	Title	Indicative Floor Plan (M/F)	Checked	DH	Drawn	PW
			Rev	0	Date	Oct 2022
			Scale	N/A	Figure	3.2

(摘錄自申請人於 13. 10. 2022 呈交的申請書)
(Extract from Applicant's
Submission of 13.10.2022)

參考編號
REFERENCE No.
A/YL/296

繪圖 DRAWING
A-2



圖例 LEGEND



申請處所(界線只作識別用)
APPLICATION PREMISES
(BOUNDARY FOR IDENTIFICATION
PURPOSE ONLY)

本摘要圖於2022年11月16日擬備，所根據的資料為地政總署於2022年2月14日拍得的航攝照片編號 E148056C
EXTRACT PLAN PREPARED ON 16.11.2022
BASED ON AERIAL PHOTO No.
E148056C TAKEN ON 14.2.2022 BY
LANDS DEPARTMENT

航攝照片 AERIAL PHOTO

擬議食肆、商店及服務行業及學校(補習學校)
元朗鳳翔路2-6號交通廣場地下(部分)及M樓(元朗市地段第348號)
PROPOSED EATING PLACE, SHOP AND SERVICES AND
SCHOOL (TUTORIAL SCHOOL)
G/F (PART) AND M/F, TRANSPORT PLAZA, 2-6 FUNG CHEUNG ROAD,
YUEN LONG (YUEN LONG TOWN LOT NO. 348)

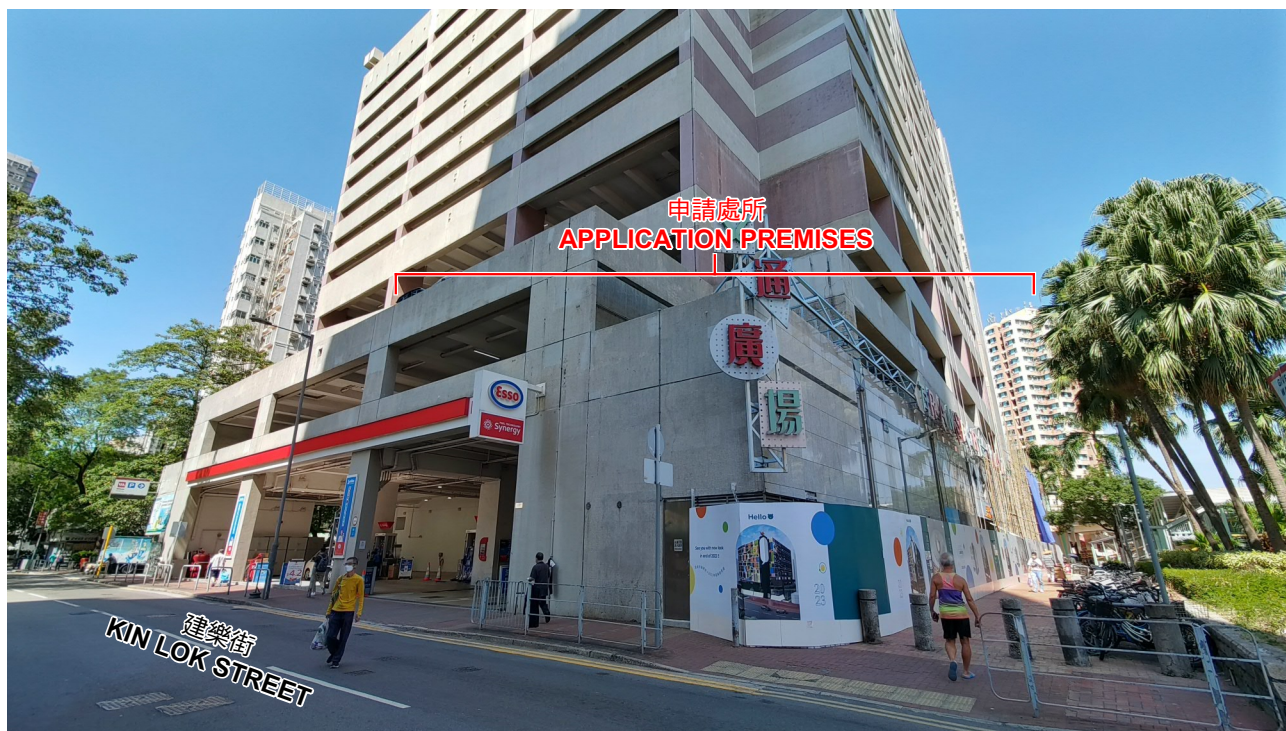
規劃署
PLANNING
DEPARTMENT



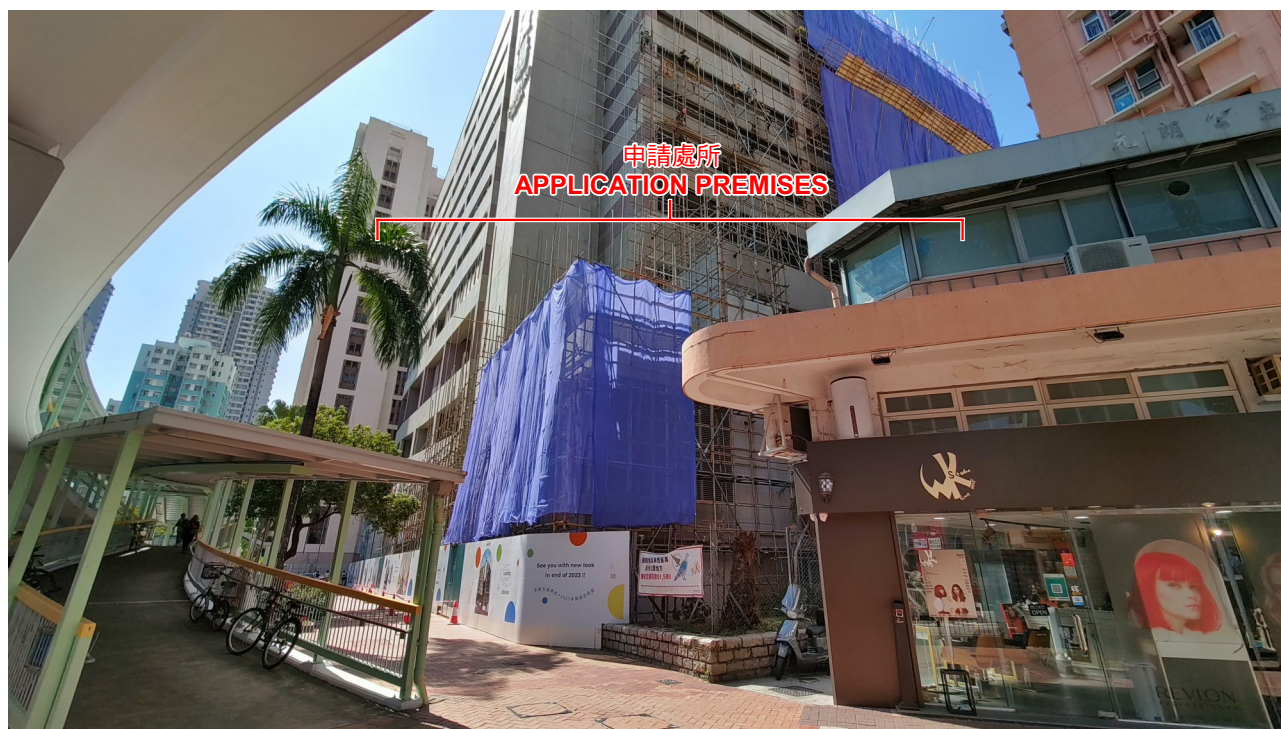
參考編號
REFERENCE No.
A/YL/296

圖 PLAN
A-3

1



2



實地照片 SITE PHOTOS

擬議食肆、商店及服務行業及學校(補習學校)
元朗鳳翔路2-6號交通廣場地下(部分)及M樓(元朗市地段第348號)
PROPOSED EATING PLACE, SHOP AND SERVICES AND
SCHOOL (TUTORIAL SCHOOL)
G/F (PART) AND M/F, TRANSPORT PLAZA, 2-6 FUNG CHEUNG ROAD,
YUEN LONG (YUEN LONG TOWN LOT NO. 348)

規劃署
PLANNING
DEPARTMENT



參考編號
REFERENCE No.
A/YL/296

圖 PLAN
A-4a

本圖於2022年11月16日擬備，所根據的資料為攝於2022年10月25日的實地照片
PLAN PREPARED ON 16.11.2022
BASED ON SITE PHOTOS
TAKEN ON 25.10.2022

3



4



申請處所界線只作識別用 APPLICATION PREMISES BOUNDARY FOR IDENTIFICATION PURPOSE ONLY

實地照片 SITE PHOTOS

擬議食肆、商店及服務行業及學校(補習學校)
元朗鳳翔路2-6號交通廣場地下(部分)及M樓(元朗市地段第348號)
PROPOSED EATING PLACE, SHOP AND SERVICES AND
SCHOOL (TUTORIAL SCHOOL)
G/F (PART) AND M/F, TRANSPORT PLAZA, 2-6 FUNG CHEUNG ROAD,
YUEN LONG (YUEN LONG TOWN LOT NO. 348)

規劃署
PLANNING
DEPARTMENT



參考編號
REFERENCE No.
A/YL/296

圖 PLAN
A-4b

本圖於2022年11月16日擬備，所根據的
資料為攝於2022年10月25日的實地照片
PLAN PREPARED ON 16.11.2022
BASED ON SITE PHOTOS
TAKEN ON 25.10.2022