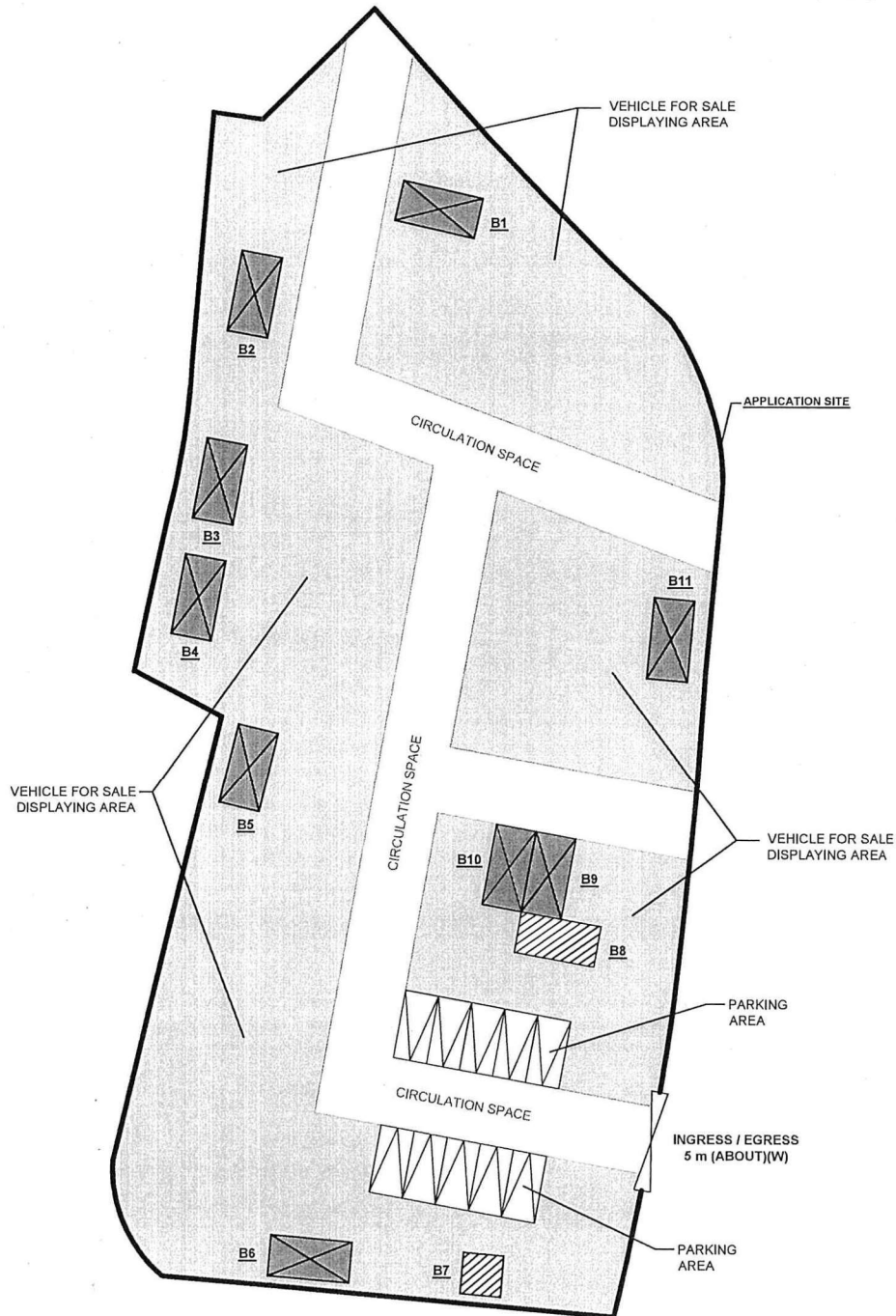


DEVELOPMENT PARAMETERS

APPLICATION SITE AREA	3,222 m ² (ABOUT)
COVERED AREA	189 m ² (ABOUT)
UNCOVERED AREA	3,033 m ² (ABOUT)
PLOT RATIO	0.06 (ABOUT)
SITE COVERAGE	5.9 % (ABOUT)
NO. OF STRUCTURE	11
DOMESTIC GFA	NOT APPLICABLE
NON-DOMESTIC GFA	189 m ² (ABOUT)
TOTAL GFA	189 m ² (ABOUT)
BUILDING HEIGHT	3m (ABOUT)
NO. OF STOREY	1

STRUCTURE	USE	COVERED AREA	GFA	BUILDING HEIGHT
B1	SHOP AND SERVICES WITH OFFICE	18 m ² (ABOUT)	18 m ² (ABOUT)	3m (ABOUT)(1-STOREY)
B2	SHOP AND SERVICES WITH OFFICE	18 m ² (ABOUT)	18 m ² (ABOUT)	3m (ABOUT)(1-STOREY)
B3	SHOP AND SERVICES WITH OFFICE	18 m ² (ABOUT)	18 m ² (ABOUT)	3m (ABOUT)(1-STOREY)
B4	SHOP AND SERVICES WITH OFFICE	18 m ² (ABOUT)	18 m ² (ABOUT)	3m (ABOUT)(1-STOREY)
B5	SHOP AND SERVICES WITH OFFICE	18 m ² (ABOUT)	18 m ² (ABOUT)	3m (ABOUT)(1-STOREY)
B6	SHOP AND SERVICES WITH OFFICE	18 m ² (ABOUT)	18 m ² (ABOUT)	3m (ABOUT)(1-STOREY)
B7	RAIN SHELTER FOR VEHICLE	9 m ² (ABOUT)	9 m ² (ABOUT)	3m (ABOUT)(1-STOREY)
B8	RAIN SHELTER FOR VEHICLE	18 m ² (ABOUT)	18 m ² (ABOUT)	3m (ABOUT)(1-STOREY)
B9	SHOP AND SERVICES WITH OFFICE	18 m ² (ABOUT)	18 m ² (ABOUT)	3m (ABOUT)(1-STOREY)
B10	SHOP AND SERVICES WITH OFFICE	18 m ² (ABOUT)	18 m ² (ABOUT)	3m (ABOUT)(1-STOREY)
B11	SHOP AND SERVICES WITH OFFICE	18 m ² (ABOUT)	18 m ² (ABOUT)	3m (ABOUT)(1-STOREY)
TOTAL		189 m ² (ABOUT)	189 m ² (ABOUT)	



LEGEND

[Outline]	APPLICATION SITE
[Hatched Box]	STRUCTURE (ENCLOSED)
[Hatched Box]	STRUCTURE (CANOPY)
[Hatched Box]	VEHICLE DISPLAYING AREA
[Hatched Box]	PARKING SPACE
[Hatched Box]	INGRESS / EGRESS

PARKING AND LOADING/UNLOADING PROVISIONS

NO. OF PRIVATE CAR PARKING SPACE	10
DIMENSION OF PARKING SPACE	: 5m (L) X 2.5m (W)

PLANNING CONSULTANT



PROJECT

PROPOSED TEMPORARY SHOP AND SERVICES WITH ANCILLARY OFFICE FOR A PERIOD OF 6 YEARS

ADDRESS

LOT 104 RP (PART) IN D.D. 115, YUEN LONG, NEW TERRITORIES

SCALE

1:500 @ A1

DRAWN BY

MN

DATE

19.12.2022

REVISED BY

DATE

TITLE

LAYOUT PLAN

DWG NO.

PLAN 4

VER

001



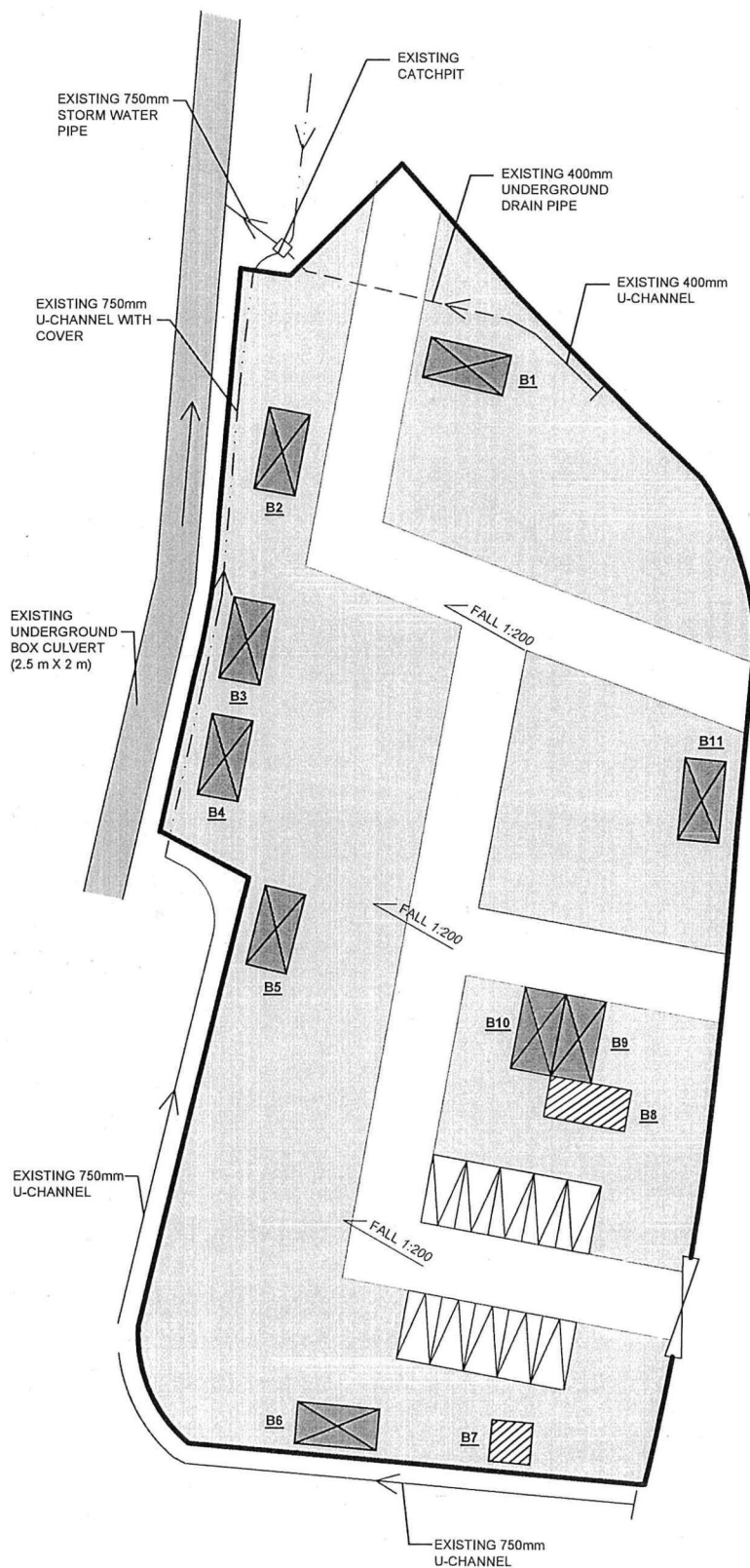
(摘錄自申請人於 13. 2. 2023 呈交的申請書)
(Extract from Applicant's
Submission of 13.2.2023)

參考編號
REFERENCE No.
A/YL/301

繪圖 DRAWING
A-2

DEVELOPMENT PARAMETERS

APPLICATION SITE AREA	: 3,222 m ²	(ABOUT)
COVERED AREA	: 189 m ²	(ABOUT)
UNCOVERED AREA	: 3,033 m ²	(ABOUT)



LEGEND

	APPLICATION SITE
	STRUCTURE (ENCLOSED)
	STRUCTURE (CANOPY)
	VEHICLE DISPLAYING AREA
	PARKING SPACE
	INGRESS / EGRESS

PLANNING CONSULTANT



PROJECT

PROPOSED TEMPORARY SHOP AND SERVICES WITH ANCILLARY OFFICE FOR A PERIOD OF 6 YEARS

ADDRESS

LOT 104 RP (PART) IN D.D. 115, YUEN LONG, NEW TERRITORIES

SCALE

1:500 @ A4

DRAWN BY

MN

DATE

14.12.2022

REVISED BY

DATE

TITLE

AS-BUILT DRAINAGE PLAN

DWG NO.

APPENDIX III

VER.

001



(摘錄自申請人於 13. 2. 2023 呈交的申請書)
(Extract from Applicant's
Submission of 13.2.2023)

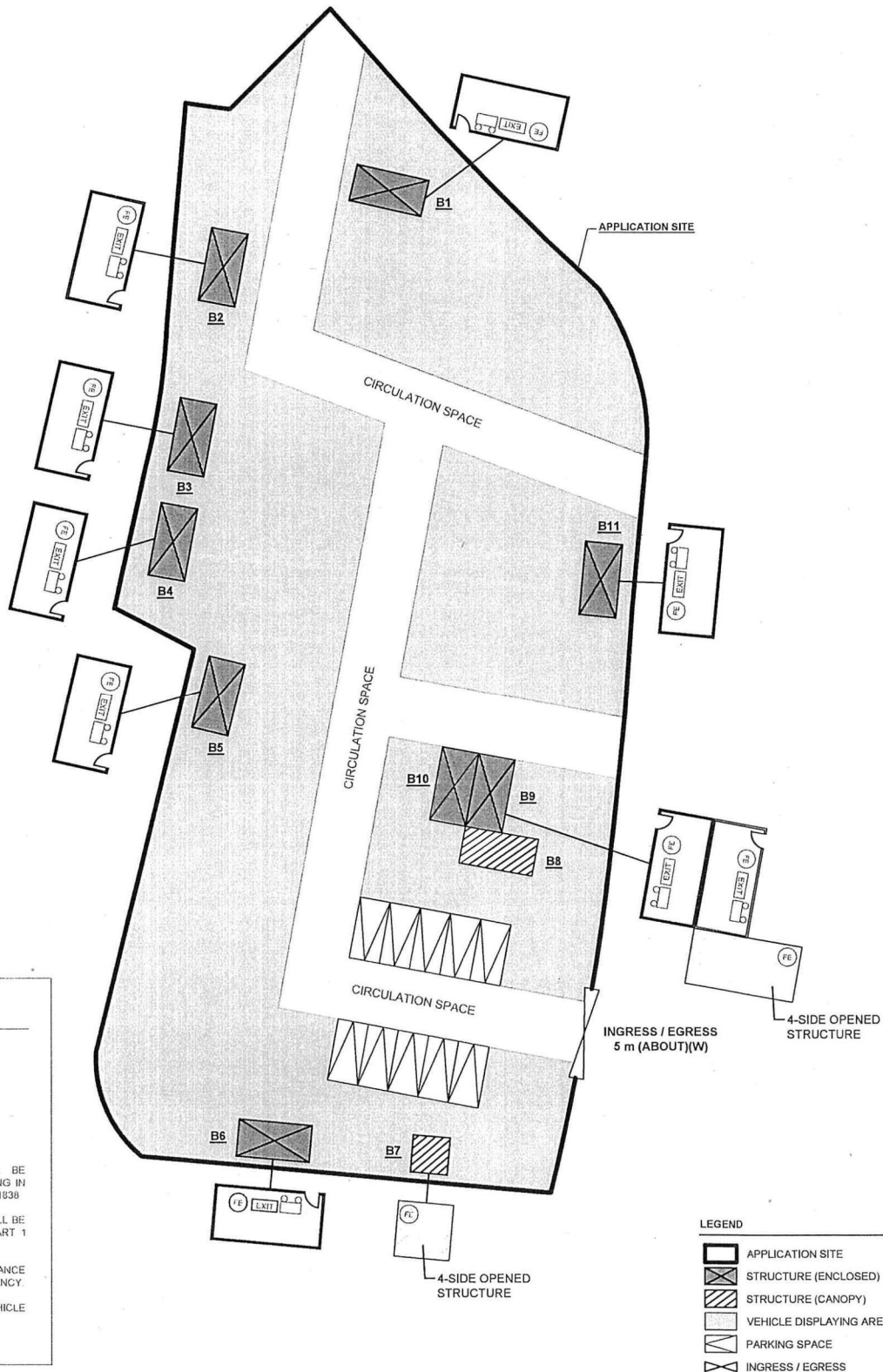
參考編號
REFERENCE No.
A/YL/301

繪圖 DRAWING
A-3

DEVELOPMENT PARAMETERS

APPLICATION SITE AREA	: 3,222 m ²	(ABOUT)
COVERED AREA	: 189 m ²	(ABOUT)
UNCOVERED AREA	: 3,033 m ²	(ABOUT)
PLOT RATIO	: 0.06	(ABOUT)
SITE COVERAGE	: 5.9 %	(ABOUT)
NO. OF STRUCTURE	: 11	
DOMESTIC GFA	: NOT APPLICABLE	
NON-DOMESTIC GFA	: 189 m ²	(ABOUT)
TOTAL GFA	: 189 m ²	(ABOUT)
BUILDING HEIGHT	: 3m	(ABOUT)
NO. OF STOREY	: 1	

STRUCTURE	USE	COVERED AREA	GFA	BUILDING HEIGHT
B1	SHOP AND SERVICES WITH OFFICE	18 m ² (ABOUT)	18 m ² (ABOUT)	3m (ABOUT)(1-STOREY)
B2	SHOP AND SERVICES WITH OFFICE	18 m ² (ABOUT)	18 m ² (ABOUT)	3m (ABOUT)(1-STOREY)
B3	SHOP AND SERVICES WITH OFFICE	18 m ² (ABOUT)	18 m ² (ABOUT)	3m (ABOUT)(1-STOREY)
B4	SHOP AND SERVICES WITH OFFICE	18 m ² (ABOUT)	18 m ² (ABOUT)	3m (ABOUT)(1-STOREY)
B5	SHOP AND SERVICES WITH OFFICE	18 m ² (ABOUT)	18 m ² (ABOUT)	3m (ABOUT)(1-STOREY)
B6	SHOP AND SERVICES WITH OFFICE	18 m ² (ABOUT)	18 m ² (ABOUT)	3m (ABOUT)(1-STOREY)
B7	RAIN SHELTER FOR VEHICLE	9 m ² (ABOUT)	9 m ² (ABOUT)	3m (ABOUT)(1-STOREY)
B8	RAIN SHELTER FOR VEHICLE	18 m ² (ABOUT)	18 m ² (ABOUT)	3m (ABOUT)(1-STOREY)
B9	SHOP AND SERVICES WITH OFFICE	18 m ² (ABOUT)	18 m ² (ABOUT)	3m (ABOUT)(1-STOREY)
B10	SHOP AND SERVICES WITH OFFICE	18 m ² (ABOUT)	18 m ² (ABOUT)	3m (ABOUT)(1-STOREY)
B11	SHOP AND SERVICES WITH OFFICE	18 m ² (ABOUT)	18 m ² (ABOUT)	3m (ABOUT)(1-STOREY)
TOTAL		189 m ² (ABOUT)	189 m ² (ABOUT)	



FIRE SERVICE INSTALLATIONS

- 9 x EXIT SIGN
- 9 x EMERGENCY LIGHT
- 11 x 5 KG CO₂ FIRE EXTINGUISHER

FS NOTES:

- SUFFICIENT EMERGENCY LIGHTING SHALL BE PROVIDED THROUGHOUT THE ENTIRE BUILDING IN ACCORDANCE WITH BS5266: PART1 AND BS EN1838
- SUFFICIENT DIRECTIONAL AND EXIT SIGN SHALL BE PROVIDED IN ACCORDANCE WITH BS5266: PART 1 AND FSD CIRCULAR LETTER 5/2008.
- PORTABLE HAND-OPERATED APPROVED APPLIANCE SHALL BE PROVIDED AS REQUIRED BY OCCUPANCY.
- ACCESS IS PROVIDED FOR EMERGENCY VEHICLE TO REACH 30m OF ALL PART OF STRUCTURES.

PLANNING CONSULTANT

R-Riches
Property Consultants Ltd.

PROJECT

PROPOSED TEMPORARY SHOP AND SERVICES WITH ANCILLARY OFFICE FOR A PERIOD OF 6 YEARS

ADDRESS

LOT 104 RP (PART) IN D.D. 115, YUEN LONG, NEW TERRITORIES

SCALE

1:500 @ A4

DRAWN BY

MN

DATE

14.12.2022

REVISED BY

DATE

TITLE

FIRE SERVICE INSTALLATIONS PROPOSAL

DWG NO.

APPENDIX II

VER.

001

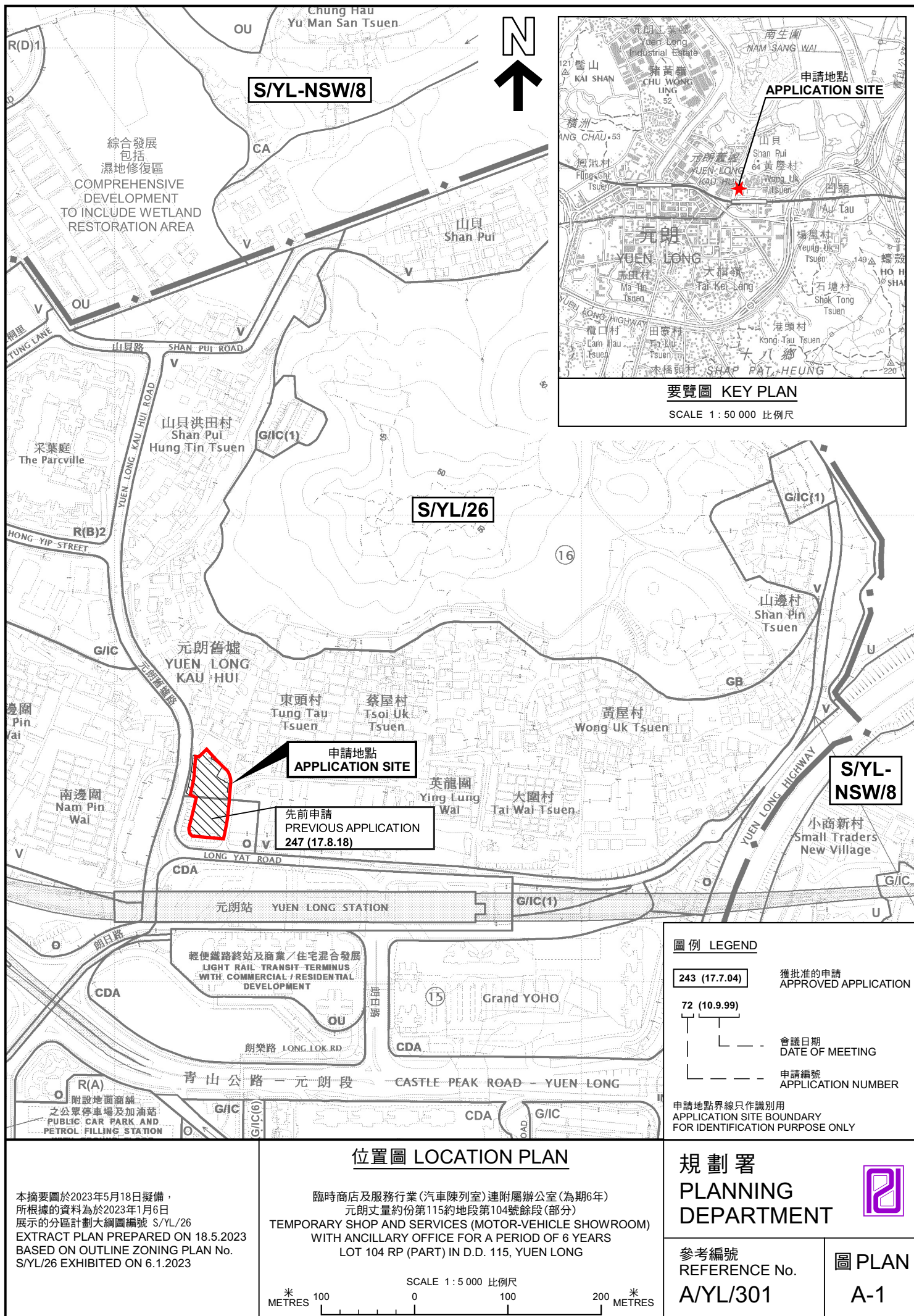
NORTH

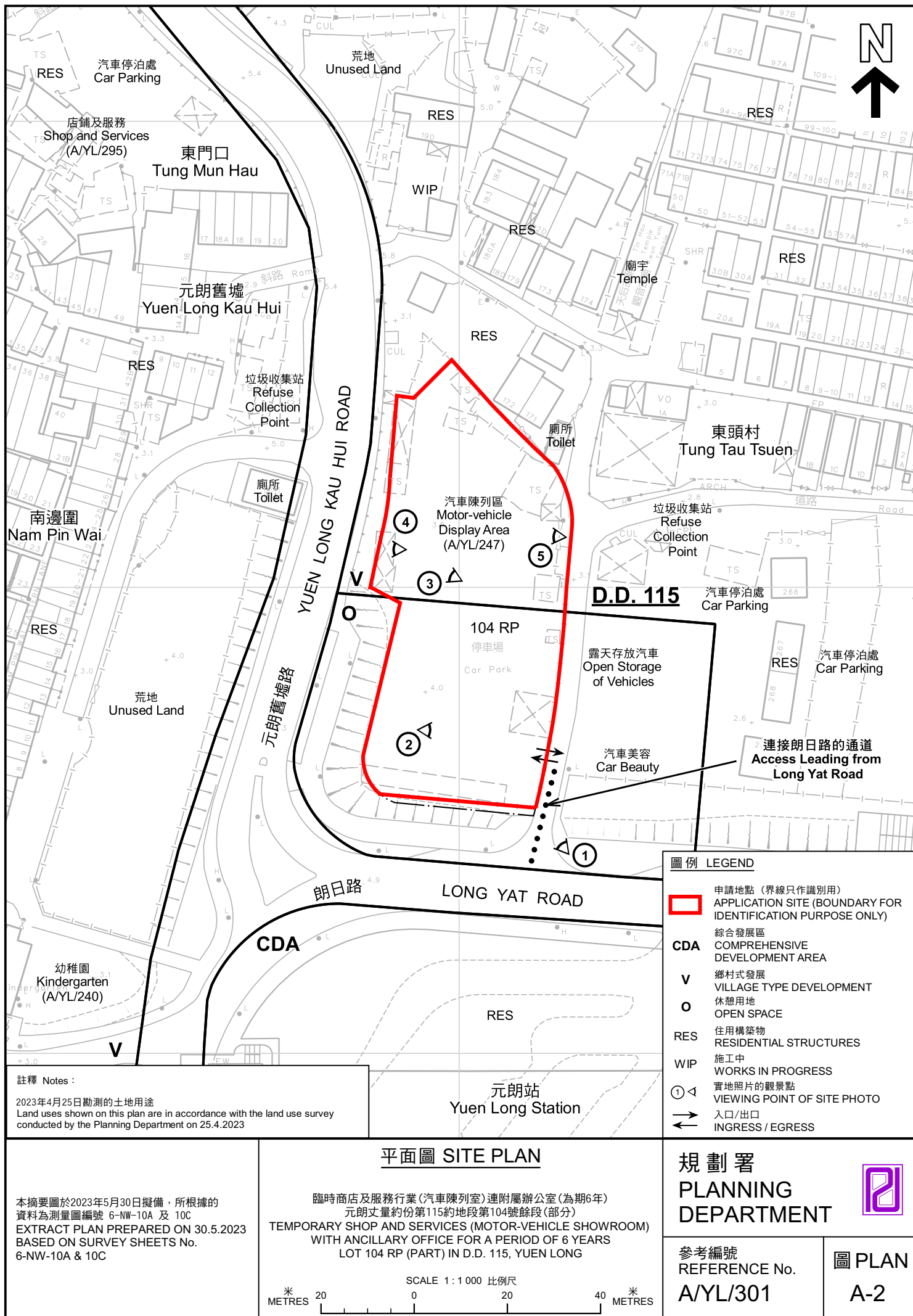


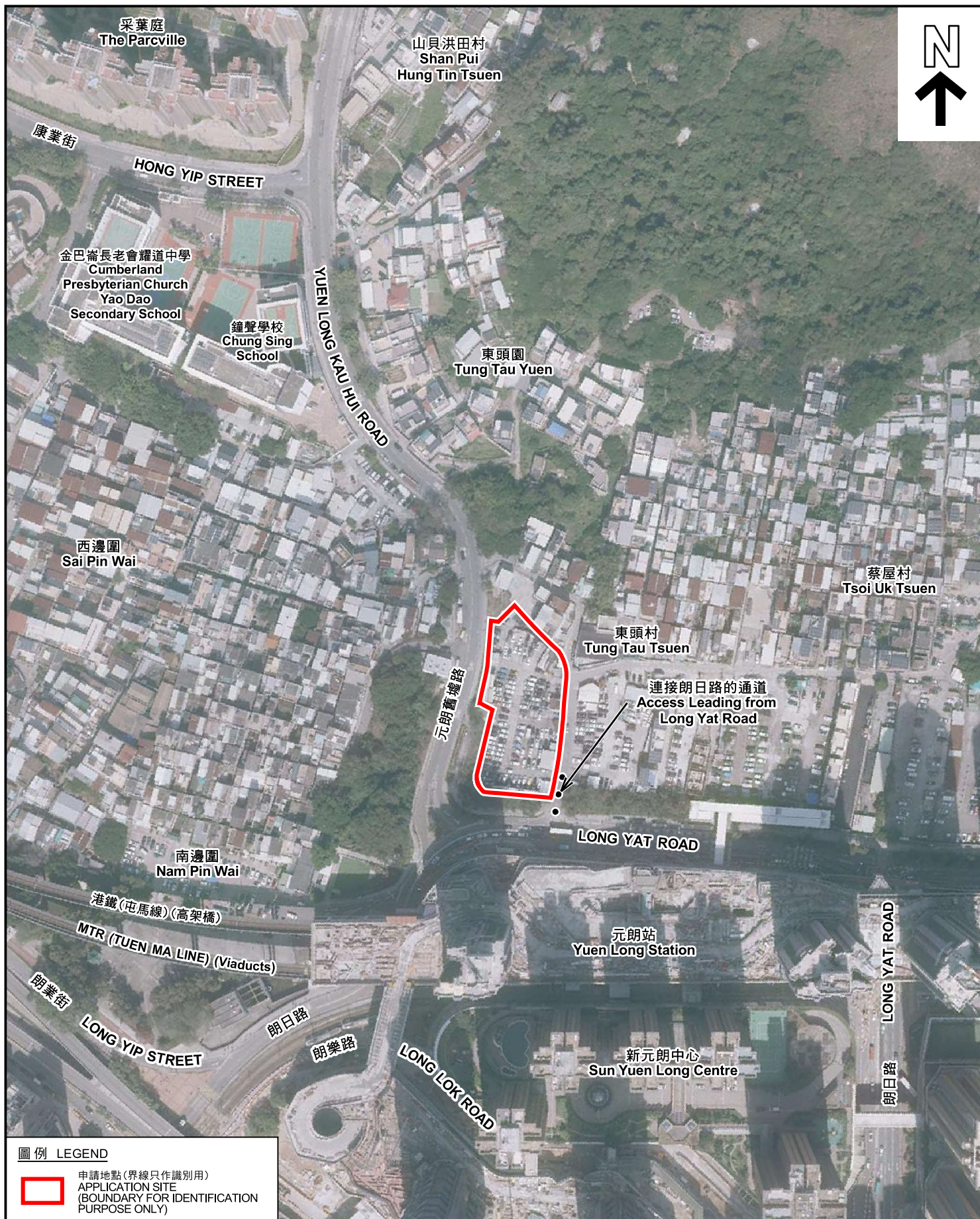
(摘錄自申請人於 13.2.2023 呈交的申請書)
(Extract from Applicant's Submission of 13.2.2023)

參考編號
REFERENCE No.
A/YL/301

繪圖 DRAWING
A-4







圖例 LEGEND



申請地點(界線只作識別用)
APPLICATION SITE
(BOUNDARY FOR IDENTIFICATION
PURPOSE ONLY)

航攝照片 AERIAL PHOTO

本摘要圖於2023年5月19日擬備，所根據的資料為地政總署於2022年2月14日拍得的航攝照片編號 E148540C
EXTRACT PLAN PREPARED ON 19.5.2023
BASED ON AERIAL PHOTO No.
E148540C TAKEN ON 14.2.2022 BY
LANDS DEPARTMENT

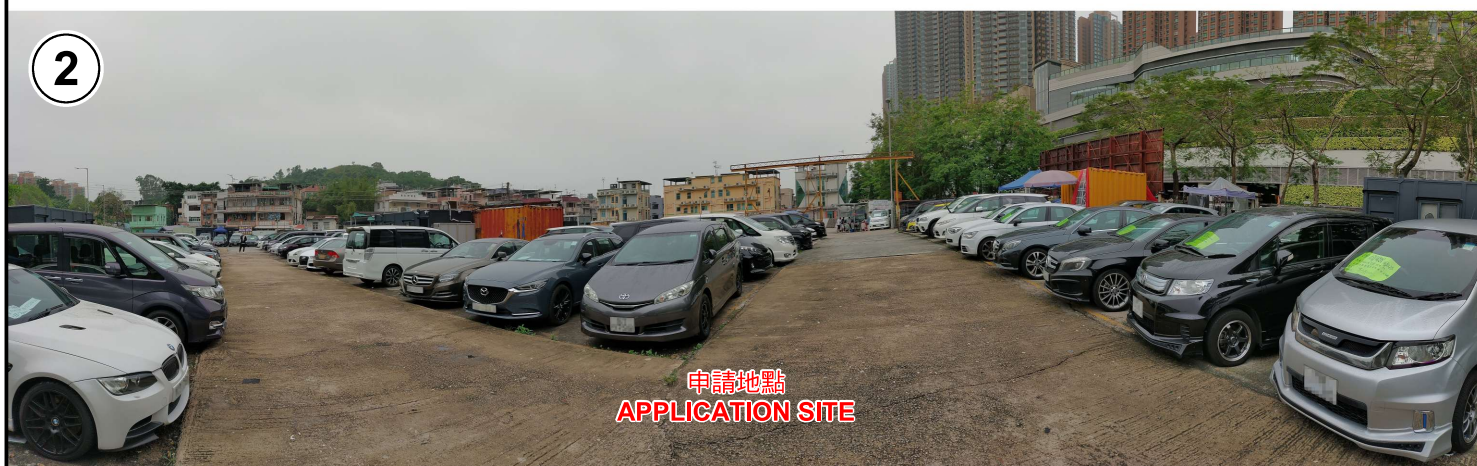
臨時商店及服務行業(汽車陳列室)連附屬辦公室(為期6年)
新界元朗丈量約份第115約地段第104號餘段(部分)
TEMPORARY SHOP AND SERVICES (MOTOR-VEHICLE SHOWROOM)
WITH ANCILLARY OFFICE FOR A PERIOD OF 6 YEARS
LOT 104 RP (PART) IN D.D. 115, YUEN LONG, NEW TERRITORIES

規劃署
PLANNING
DEPARTMENT



參考編號
REFERENCE No.
A/YL/301

圖 PLAN
A-3



申請地點界線只作識別用 APPLICATION SITE BOUNDARY FOR IDENTIFICATION PURPOSE ONLY

實地照片 SITE PHOTOS

本圖於2023年6月5日擬備，所根據的資料為攝於2023年4月25日的實地照片
PLAN PREPARED ON 5.6.2023
BASED ON SITE PHOTOS
TAKEN ON 25.4.2023

臨時商店及服務行業(汽車陳列室)連附屬辦公室(為期6年)
元朗丈量約份第115約地段第104號餘段(部分)
TEMPORARY SHOP AND SERVICES (MOTOR-VEHICLE SHOWROOM)
WITH ANCILLARY OFFICE FOR A PERIOD OF 6 YEARS
LOT 104 RP (PART) IN D.D. 115, YUEN LONG

規劃署
PLANNING
DEPARTMENT



參考編號
REFERENCE No.
A/YL/301

圖 PLAN
A-4a

4



5



實地照片 SITE PHOTOS

本圖於2023年5月19日擬備，所根據的資料為攝於2023年4月25日的實地照片
PLAN PREPARED ON 19.5.2023
BASED ON SITE PHOTOS
TAKEN ON 25.4.2023

臨時商店及服務行業(汽車陳列室)連附屬辦公室(為期6年)
元朗丈量約份第115約地段第104號餘段(部分)
TEMPORARY SHOP AND SERVICES (MOTOR-VEHICLE SHOWROOM)
WITH ANCILLARY OFFICE FOR A PERIOD OF 6 YEARS
LOT 104 RP (PART) IN D.D. 115, YUEN LONG

規劃署
PLANNING
DEPARTMENT



參考編號
REFERENCE No.
A/YL/301

圖 PLAN
A-4b