

B2/F LAYOUT PLAN

-- This drawing and the contents are the copyright of I Consultants & Contracting Co. Ltd.
 -- No part of the drawing and the design contained herein may be reproduced without the prior written consent of a director of I Consultants & Contracting Co. Ltd.
 -- Do not take measurements directly from this drawing.
 -- Check and verify all dimensions on site.
 -- Read this drawing in conjunction with the specifications and all other related drawings.
 -- Notify the Architect immediately of any discrepancy found herein.

Rev. Date Description
 Project Name:
 Redevelopment of
 Yuen Long Theatre
 at Lot No. 3678 in
 D.D. 120, Yuen Long, N.T.

Planning Consultant:
 DeSPACE (International) Limited

Architect:
 I Consultants & Contracting Company Limited

Traffic Consultant:
 CTA Consultants Limited

Environmental Consultant:
 BeeKeng Consulting Limited

Structural and Geotechnical Engineer:
 S. T. Wong & Partners Limited

Drawing Title:
 B2/F LAYOUT PLAN

Designed by: JODY

Drawn by: JODY

Checked by: CAL

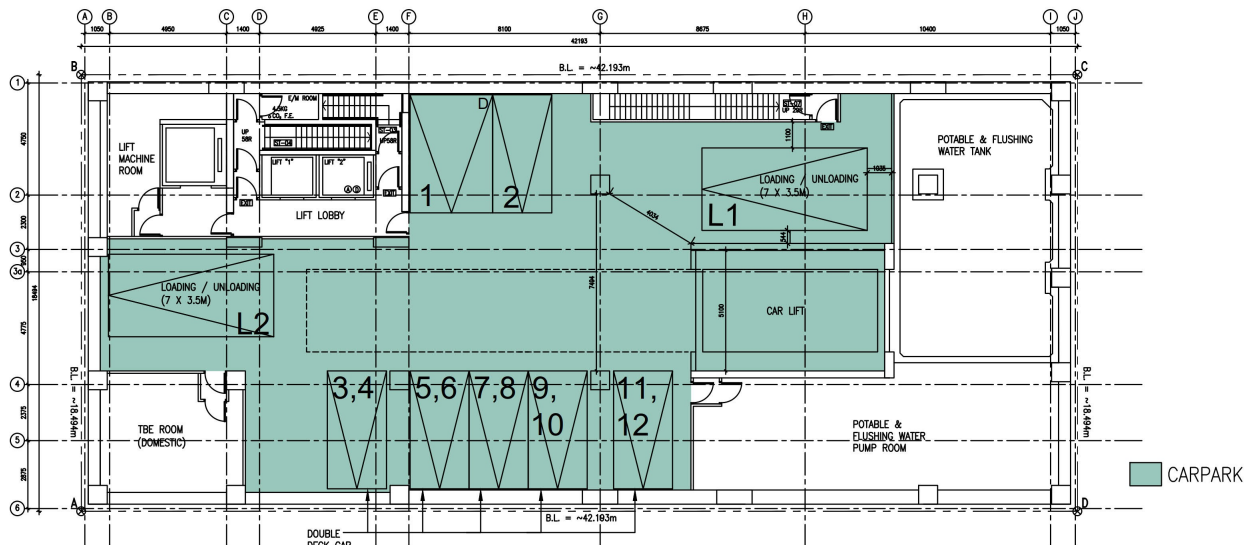
Scale: 1:100 Paper: A3

Drawing Number:
 GBP001

(摘錄自申請人於 30. 9. 2024 呈交的進一步資料)
 (Extract from Applicant's Further
 Information Submitted on 30.9.2024)

參考編號
 REFERENCE No.
 A/YL/319

繪圖 DRAWING
 A-1



B1/F LAYOUT PLAN

- This drawing and the contents are the copyright of I Consultants & Contracting Co. Ltd.
 - No part of the drawing and the design contained herein may be reproduced without the prior written consent of a director of I Consultants & Contracting Co. Ltd.
 - Do not take measurements directly from this drawing.
 - Check and verify all dimensions on site.
 - Read this drawing in conjunction with the specifications and all other related drawings.
 - Notify the Architect immediately of any discrepancy found herein.

Rev. Date Description
 Project Name:
 Redevelopment of
 Yuen Long Theatre
 at Lot No. 3678 in
 D.D. 120, Yuen Long, N.T.

Planning Consultant:
 DeSPACE (International) Limited
 Architect:
 I Consultants & Contracting Company Limited
 Traffic Consultant:
 CTA Consultants Limited
 Environmental Consultant:
 BeeKeng Consulting Limited
 Structural and Geotechnical Engineer:
 S. T. Wong & Partners Limited

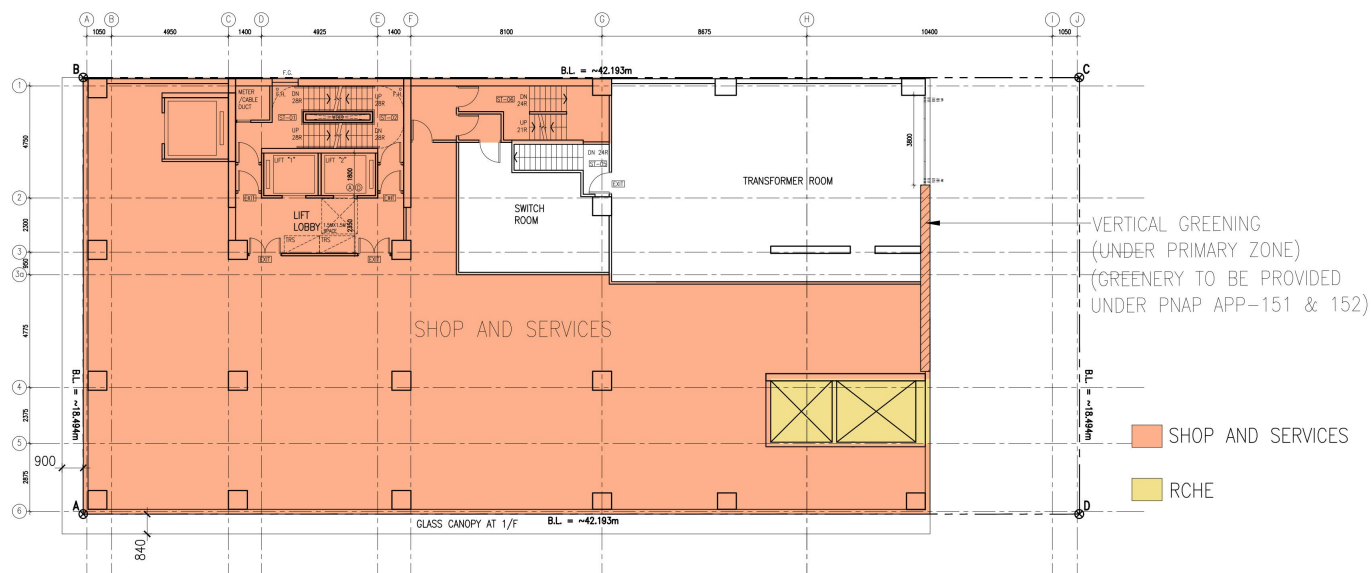
Drawing Title:
 B1/F LAYOUT PLAN

Designed by: JODY
 Drawn by: JODY
 Checked by: CAL
 Paper: A3
 Drawing Number:
 GBP002

(摘錄自申請人於 30. 9. 2024 呈交的進一步資料)
 (Extract from Applicant's Further
 Information Submitted on 30.9.2024)

參考編號
 REFERENCE No.
 A/YL/319

繪圖 DRAWING
 A-2



1/F LAYOUT PLAN

-- This drawing and the contents are the copyright of I Consultants & Contracting Co. Ltd.
 -- No part of the drawing and the design contained herein may be reproduced without the prior written consent of a director of I Consultants & Contracting Co. Ltd.
 -- Do not take measurements directly from this drawing.
 -- Check and verify all dimensions on site.
 -- Read this drawing in conjunction with the specifications and all other related drawings.
 -- Notify the Architect immediately of any discrepancy found herein.

Rev. Date Description
 Project Name:

Redevelopment of
 Yuen Long Theatre
 at Lot No. 3678 in
 D.D. 120, Yuen Long, N.T.

Planning Consultant:
 DEEPSPACE (International) Limited

Architect:
 I Consultants & Contracting Company Limited

Traffic Consultant:
 CTA Consultants Limited

Environmental Consultant:
 BeeKerry Consulting Limited

Structural and Geotechnical Engineer:
 S. T. Wong & Partners Limited

Drawing Title:
 1/F LAYOUT PLAN

Designed by: JODY

Drawn by: JODY

Checked by: CAL

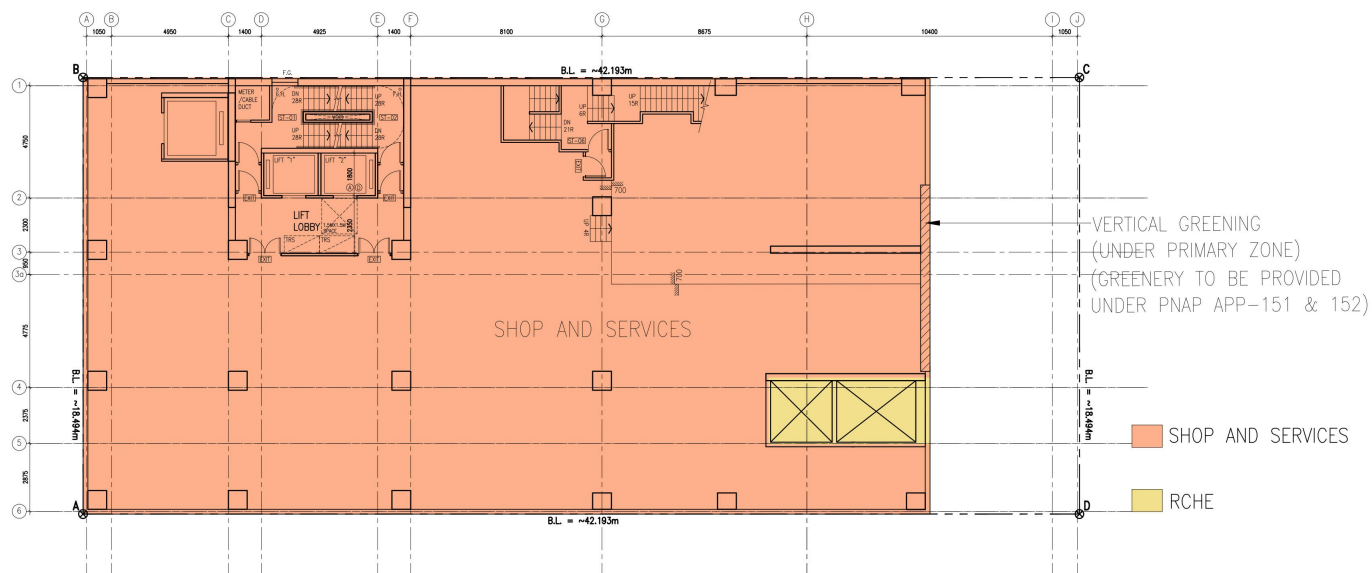
Paper: A3

Drawing Number:
 GBP004A

(摘錄自申請人於 11. 6. 2024 呈交的進一步資料)
 (Extract from Applicant's Further
 Information Submitted on 11.6.2024)

參考編號
 REFERENCE No.
 A/YL/319

繪圖 DRAWING
 A-4



2/F LAYOUT PLAN

-- This drawing and the contents are the copyright of I Consultants & Contracting Co. Ltd.
 -- No part of the drawing and the design contained herein may be reproduced without the prior written consent of a director of I Consultants & Contracting Co. Ltd.
 -- Do not take measurements directly from this drawing.
 -- Check and verify all dimensions on site.
 -- Read this drawing in conjunction with the specifications and all other related drawings.
 -- Notify the Architect immediately of any discrepancy found herein.

Rev.	Date	Description
Project Name:		

Redevelopment of
Yuen Long Theatre
at Lot No. 3678 in
D.D. 120, Yuen Long, N.T.

Planning Consultant:
DESPACE (International) Limited

Architect:
I Consultants & Contracting Company Limited

Traffic Consultant:
CTA Consultants Limited

Environmental Consultant:
BeeKeng Consulting Limited

Structural and Geotechnical Engineer:
S. T. Wong & Partners Limited

Drawing Title:
2/F LAYOUT PLAN

Designed by: JODY

Drawn by: JODY

Checked by: CAL.

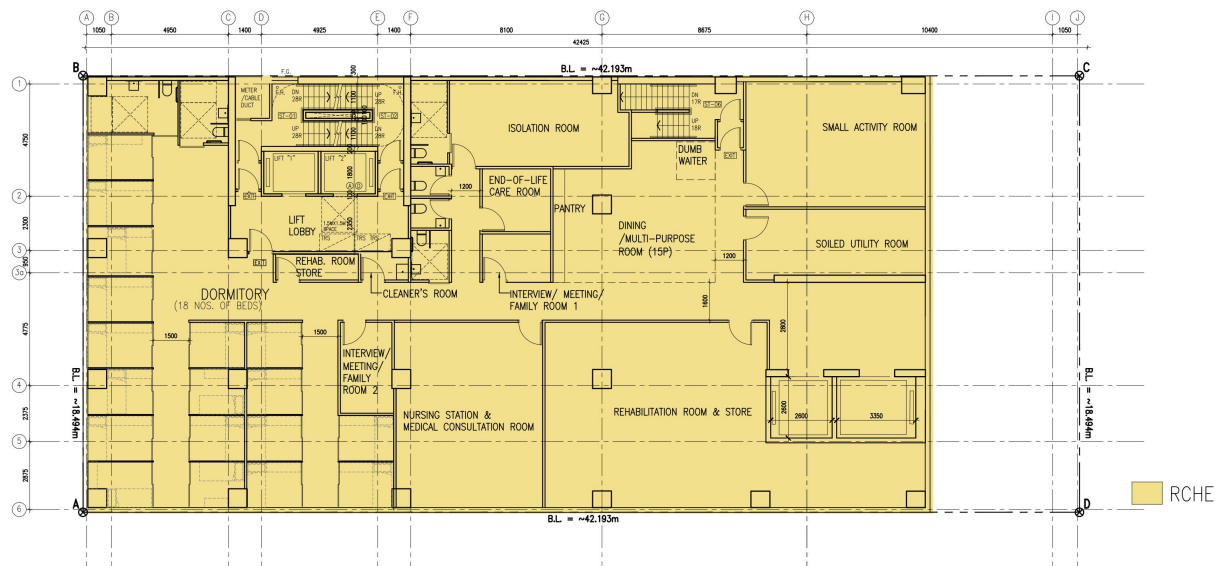
Scale: 1:100 Paper: A3

Drawing Number:
GBP004B

(摘錄自申請人於 11. 6. 2024 呈交的進一步資料)
 (Extract from Applicant's Further
 Information Submitted on 11.6.2024)

參考編號
REFERENCE No.
A/YL/319

繪圖 DRAWING
A-5



3/F LAYOUT PLAN
(DORMITORY FOR RCHE)

- This drawing and the contents are the copyright of I Consultants & Contracting Co. Ltd.
- No part of the drawing and the design contained herein may be reproduced without the prior written consent of a director of I Consultants & Contracting Co. Ltd.
- Do not take measurements directly from this drawing.
- Check and verify all dimensions on site.
- Read this drawing in conjunction with the specifications and all other related drawings.
- Notify the Architect immediately of any discrepancy found herein.

Rev. Date Description
Project Name:

Redevelopment of
Yuen Long Theatre
at Lot No. 3678 in
D.D. 120, Yuen Long, N.T.

Planning Consultant:
DESIGNSPACE (International) Limited

Architect:
I Consultants & Contracting Company Limited

Traffic Consultant:
CTA Consultants Limited

Environmental Consultant:
Beekerry Consulting Limited

Structural and Geotechnical Engineer:
S. T. Wong & Partners Limited

Drawing Title:
3/F LAYOUT PLAN

Designed by: JODY

Drawn by: JODY

Checked by: CAL.

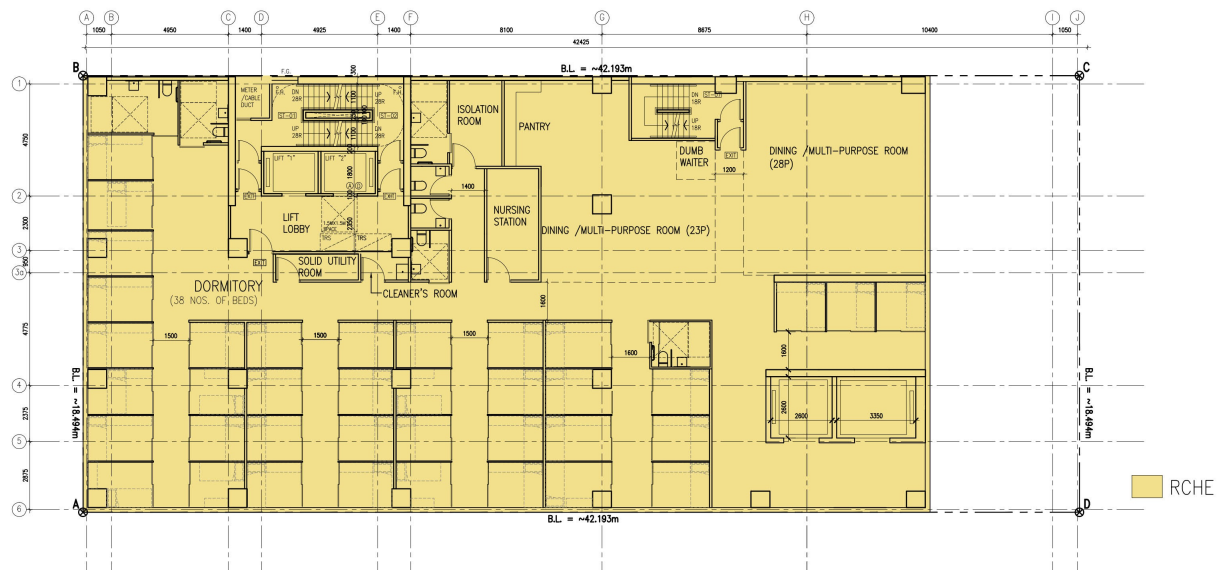
Paper: A3

Drawing Number:
GBP005

(摘錄自申請人於 11. 6. 2024 呈交的進一步資料)
(Extract from Applicant's Further
Information Submitted on 11.6.2024)

參考編號
REFERENCE No.
A/YL/319

繪圖 DRAWING
A-6



4/F TO 7/F LAYOUT PLAN
(DORMITORY FOR RCHE)

- This drawing and the contents are the copyright of I Consultants & Contracting Co. Ltd.
- No part of the drawing and the design contained herein may be reproduced without the prior written consent of a director of I Consultants & Contracting Co. Ltd.
- Do not take measurements directly from this drawing.
- Check and verify all dimensions on site.
- Read this drawing in conjunction with the specifications and all other related drawings.
- Notify the Architect immediately of any discrepancy found herein.

Rev. Date Description

Project Name:

Redevelopment of
Yuen Long Theatre
at Lot No. 3678 in
D.D. 120, Yuen Long, N.T.

Planning Consultant:
DESIGNSPACE (International) Limited

Architect:
I Consultants & Contracting Company Limited

Traffic Consultant:
CTA Consultants Limited

Environmental Consultant:
BeeKeng Consulting Limited

Structural and Geotechnical Engineer:
S. T. Wong & Partners Limited

Drawing Title:

4/F TO 7/F LAYOUT PLAN

Designed by: JODY

Drawn by: JODY

Checked by: CAL

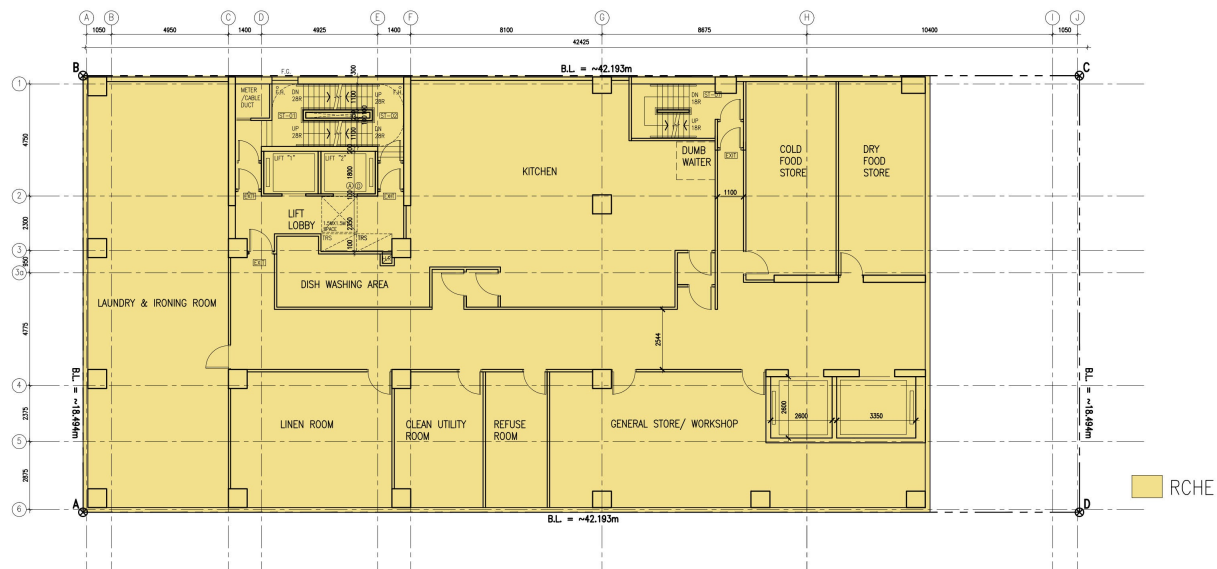
Scale: 1:1000 Paper: A3

Drawing Number:
GBP006

(摘錄自申請人於 11. 6. 2024 呈交的進一步資料)
(Extract from Applicant's Further
Information Submitted on 11.6.2024)

參考編號
REFERENCE No.
A/YL/319

繪圖 DRAWING
A-7



- This drawing and the contents are the copyright of I Consultants & Contracting Co. Ltd.
 - No part of the drawing and the design contained herein may be reproduced without the prior written consent of a director of I Consultants & Contracting Co. Ltd.
 - Do not take measurements directly from this drawing.
 - Check and verify all dimensions on site.
 - Read this drawing in conjunction with the specifications and all other related drawings.
 - Notify the Architect immediately of any discrepancy found herein.

Rev. Date Description
 Project Name:

Redevelopment of
 Yuen Long Theatre
 at Lot No. 3678 in
 D.D. 120, Yuen Long, N.T.

Planning Consultant:
 DESPACE (International) Limited

Architect:
 I Consultants & Contracting Company Limited

Traffic Consultant:
 CTA Consultants Limited

Environmental Consultant:
 BeeKeng Consulting Limited

Structural and Geotechnical Engineer:
 S. T. Wong & Partners Limited

Drawing Title:
 8/F LAYOUT PLAN

Designed by: JODY

Drawn by: JODY

Checked by: CAL.

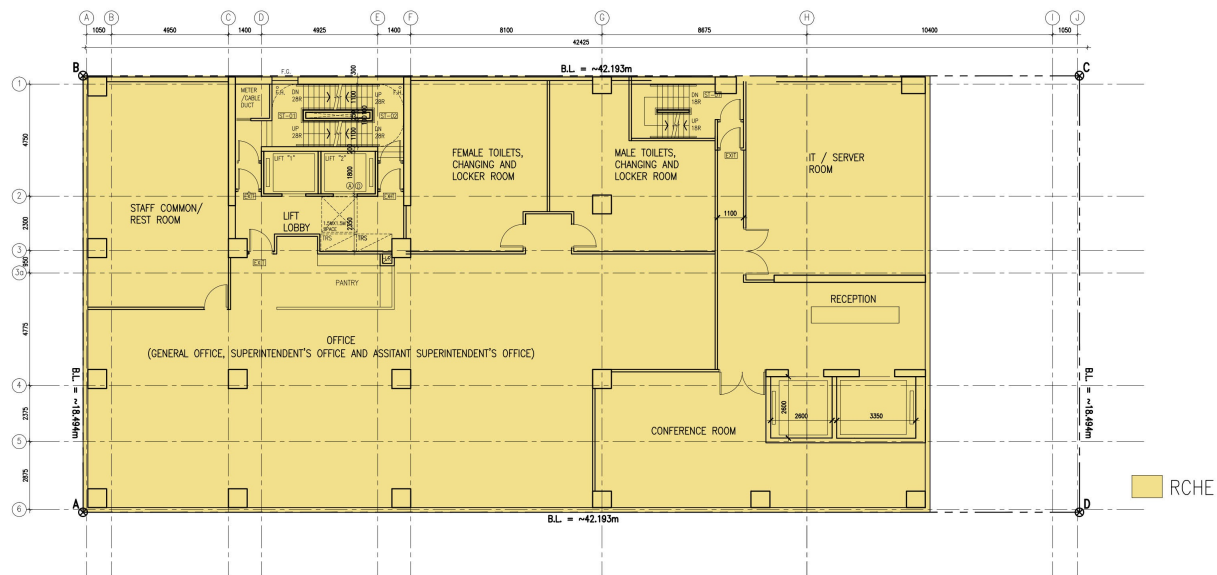
Paper: A3

Drawing Number:
 GBP007

(摘錄自申請人於 11. 6. 2024 呈交的進一步資料)
 (Extract from Applicant's Further
 Information Submitted on 11.6.2024)

參考編號
 REFERENCE No.
 A/YL/319

繪圖 DRAWING
 A-8



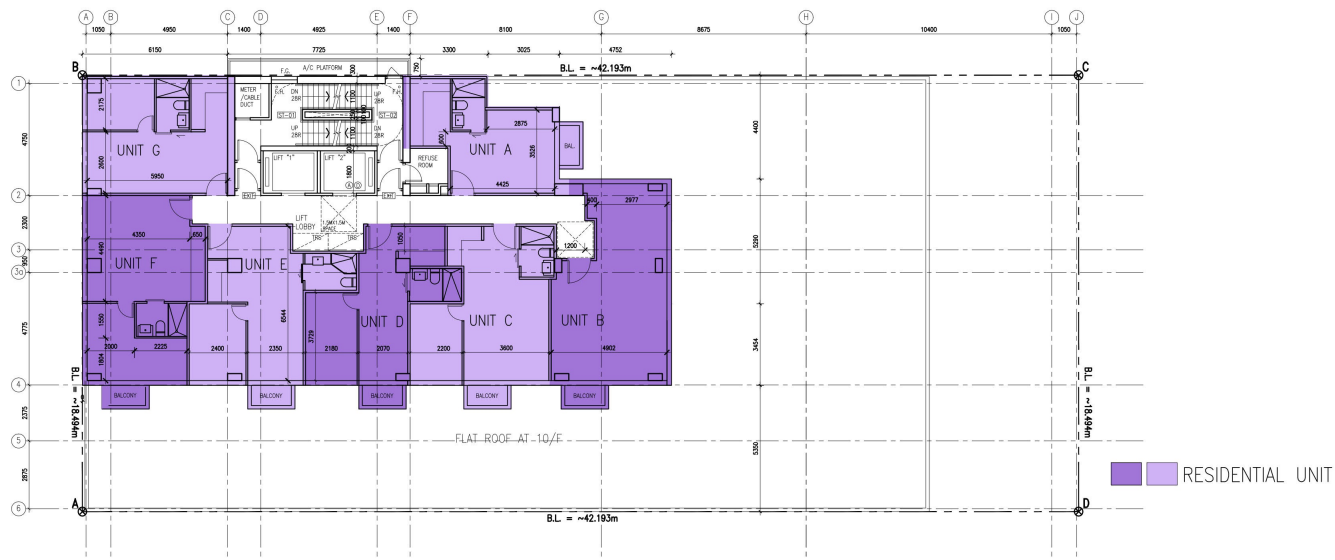
- This drawing and the contents are the copyright of I Consultants & Contracting Co. Ltd.
- No part of the drawing and the design contained herein may be reproduced without the prior written consent of a director of I Consultants & Contracting Co. Ltd.
- Do not take measurements directly from this drawing.
- Check and verify all dimensions on site.
- Read this drawing in conjunction with the specifications and all other related drawings.
- Notify the Architect immediately of any discrepancy found herein.

Rev.	Date	Description
Project Name:		
Redevelopment of Yuen Long Theatre at Lot No. 3678 in D.D. 120, Yuen Long, N.T.		
Planning Consultant: DESPACE (International) Limited		
Architect: I Consultants & Contracting Company Limited		
Traffic Consultant: CTA Consultants Limited		
Environmental Consultant: BeeKeng Consulting Limited		
Structural and Geotechnical Engineer: S. T. Wong & Partners Limited		
Drawing Title:		
9/F LAYOUT PLAN		
Designed by: JODY		
Drawn by: JODY		
Checked by: CAL.		
Paper: A3		
Drawing Number: GBP008		

(摘錄自申請人於 11. 6. 2024 呈交的進一步資料)
(Extract from Applicant's Further Information Submitted on 11.6.2024)

參考編號
REFERENCE No.
A/YL/319

繪圖 DRAWING
A-9



10/F TO 19/F LAYOUT PLAN

- This drawing and the contents are the copyright of I Consultants & Contracting Co. Ltd.
- No part of the drawing and the design contained herein may be reproduced without the prior written consent of a director of I Consultants & Contracting Co. Ltd.
- Do not take measurements directly from this drawing.
- Check and verify all dimensions on site.
- Read this drawing in conjunction with the specifications and all other related drawings.
- Notify the Architect immediately of any discrepancy found herein.

Rev. Date Description
Project Name:

Redevelopment of
Yuen Long Theatre
at Lot No. 3678 in
D.D. 120, Yuen Long, N.T.

Planning Consultant:
DESPACE (International) Limited

Architect:
I Consultants & Contracting Company Limited

Traffic Consultant:
CTA Consultants Limited

Environmental Consultant:
BeeKeng Consulting Limited

Structural and Geotechnical Engineer:
S. T. Wong & Partners Limited

Drawing Title:
10/F TO 17/F LAYOUT PLAN

Designed by: JODY

Drawn by: JODY

Checked by: CAL

Scale: 1:100 Paper: A3

Drawing Number:
GBP009

(摘錄自申請人於 11. 6. 2024 呈交的進一步資料)
(Extract from Applicant's Further
Information Submitted on 11.6.2024)

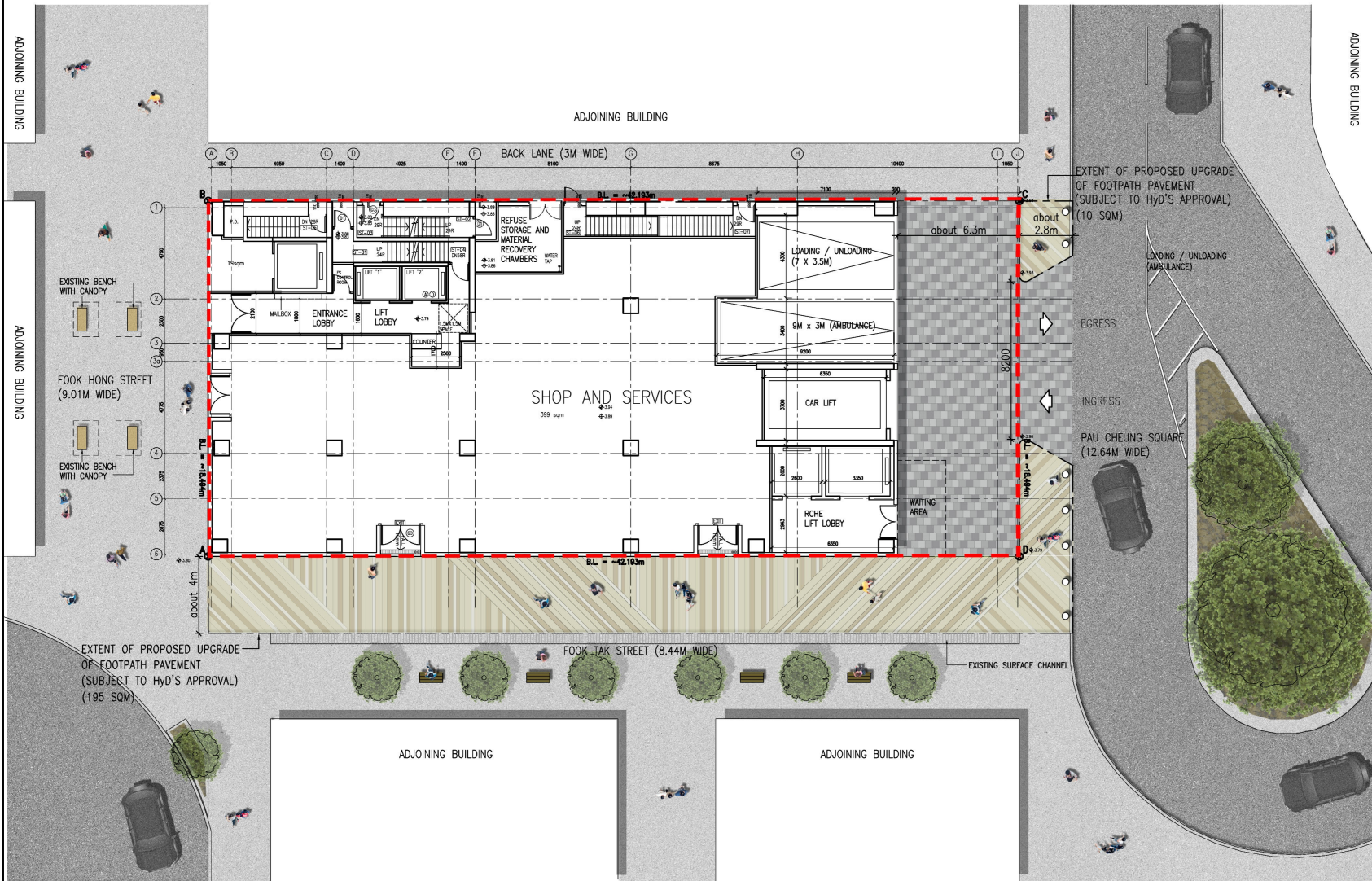
參考編號
REFERENCE No.
A/YL/319

繪圖 DRAWING
A-10

LEGEND

- EXISTING TREE
- NEW BENCH
- NEW BOLLARD

- PAVING AREA (205 M²)
- SITE BOUNDARY



PROPOSED STREETSCAPE PLAN

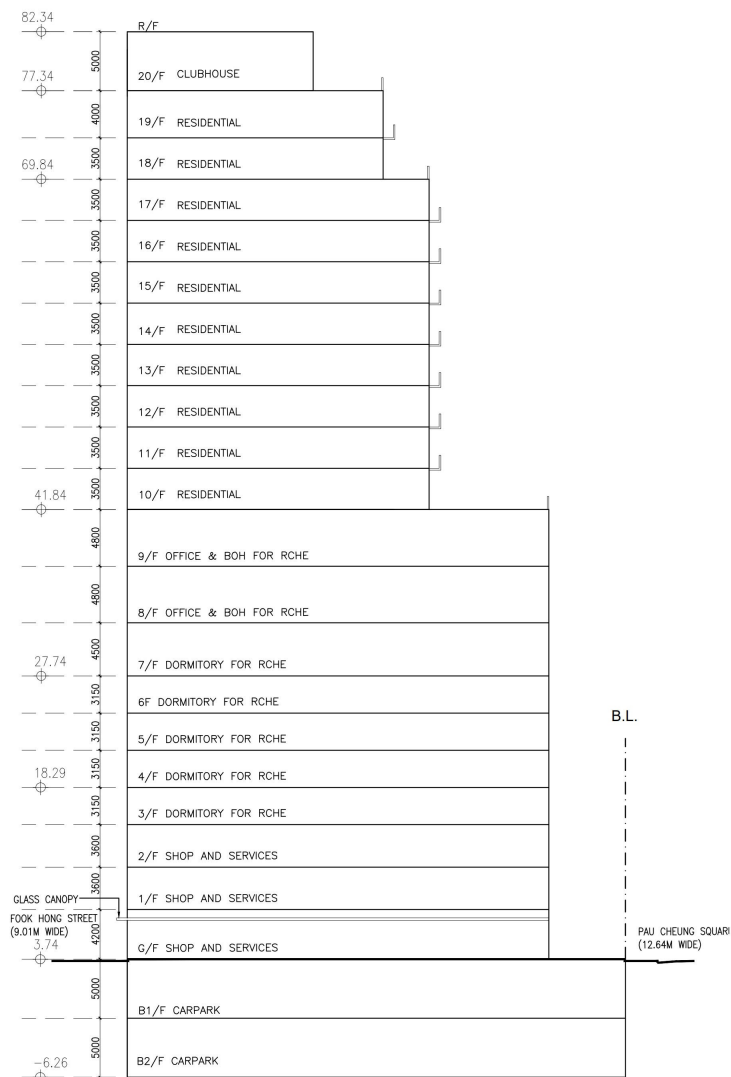
- This drawing and the contents are the copyright of I Consultants & Contracting Co.
 - No part of the drawing and the design contained herein may be reproduced without the prior written consent of a director of I Consultants & Contracting Co. Ltd.
 - Do not take measurements directly from this drawing.
 - Check and verify all dimensions on site.
 - Read this drawing in conjunction with the specifications and all other related drawings.
 - Notify the Architect immediately of any discrepancy found herein.

Rev.	Date	Description
Project Name:		
Redevelopment of Yuen Long Theatre at Lot No. 3678 in D.D. 120, Yuen Long, N.T.		
Planning Consultant: GeoSPACE (International) Limited		
Architect: I Consultants & Contracting Company Limited		
Traffic Consultant: CTA Consultants Limited		
Environmental Consultant: GeoEnergy Consulting Limited		
Structural and Geotechnical Engineer: S. T. Wong & Partners Limited		
Drawing Title:		
PROPOSED STREETSCAPE PLAN		
Designed by: JODY		
Drawn by: JODY		
Checked by: CAL		
Scale: 1:200	Paper: A3	Version: 1.0
Drawing Number: GBP012		

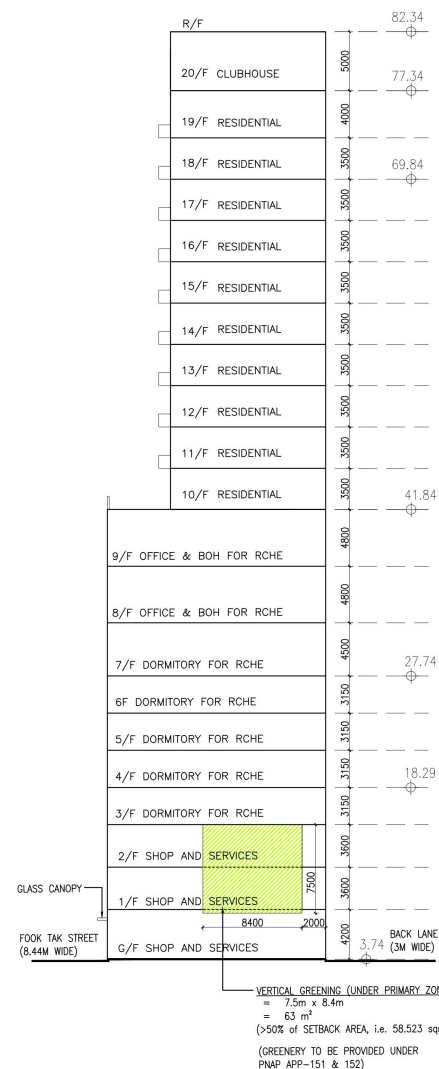
(摘錄自申請人於 17. 5. 2024 呈交的進一步資料)
 (Extract from Applicant's Further Information Submitted on 17.5.2024)

參考編號
 REFERENCE No.
 A/YL/319

繪圖 DRAWING
 A-11



SCHEMATIC SECTION
(FACING FOOK TAK STREET)



SCHEMATIC ELEVATION
(FACING PAU CHEUNG SQUARE)

- This drawing and the contents are the copyright of I Consultants & Contracting Co. Ltd.
- No part of the drawing and the design contained herein may be reproduced without the prior written consent of a director of I Consultants & Contracting Co. Ltd.
- Do not take measurements directly from this drawing.
- Check and verify all dimensions on site.
- Read this drawing in conjunction with the specifications and all other related drawings.
- Notify the Architect immediately of any discrepancy found herein.

Rev. Date Description
Project Name:
Redevelopment of
Yuen Long Theatre
at Lot No. 3678 in
D.D. 120, Yuen Long, N.T.

Planning Consultant:
DeSPACE (International) Limited

Architect:
I Consultants & Contracting Company Limited

Traffic Consultant:
CTA Consultants Limited

Environmental Consultant:
Beeking Consulting Limited

Structural and Geotechnical Engineer:
S. T. Wong & Partners Limited

Drawing Title:
SCHEMATIC SECTION
AND ELEVATION

Designed by: JODY

Drawn by: JODY

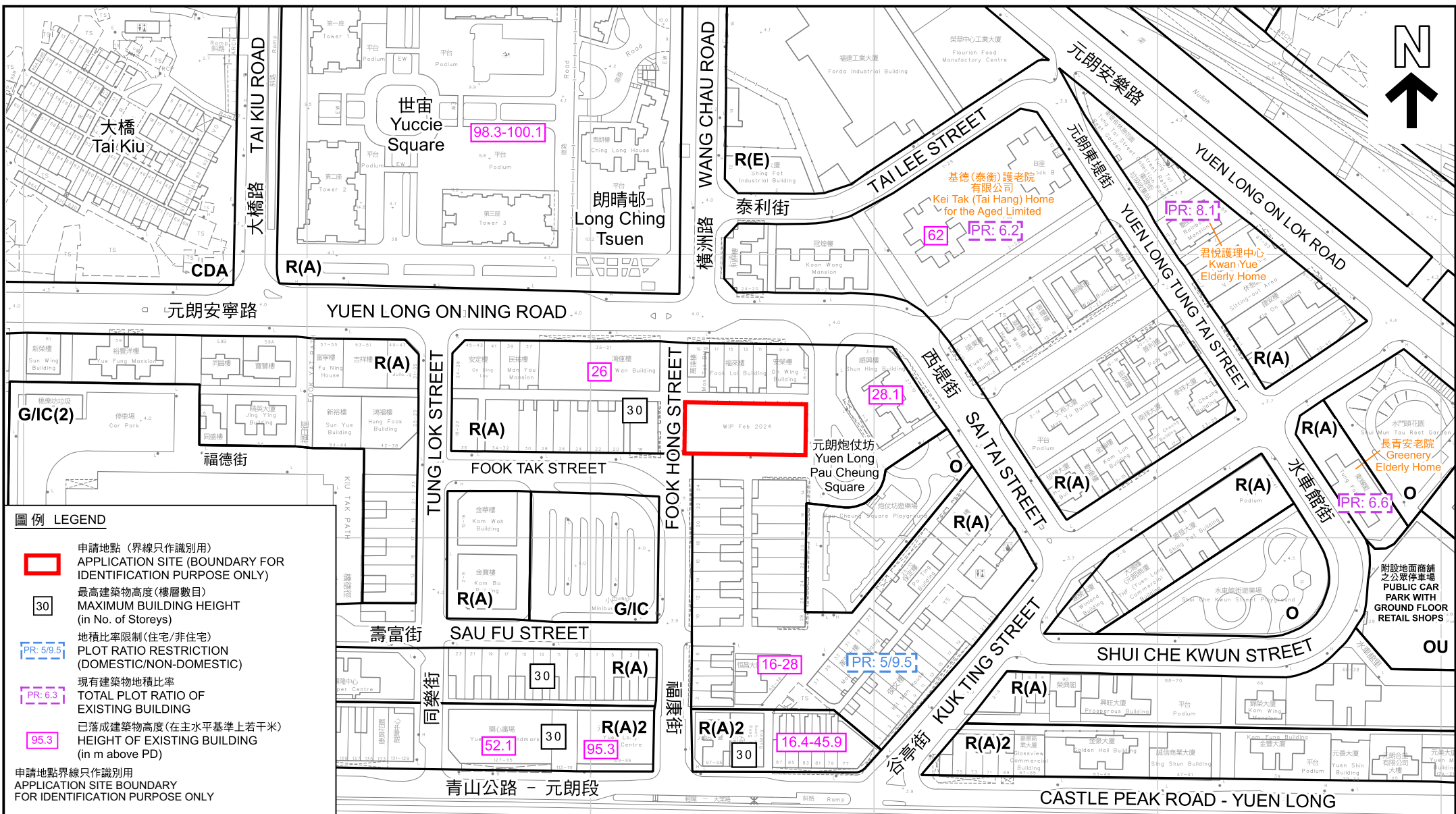
Checked by: CAL

Drawing Number: GBP013

(摘錄自申請人於 17. 5. 2024 呈交的進一步資料)
(Extract from Applicant's Further
Information Submitted on 17.5.2024)

參考編號
REFERENCE No.
A/YL/319

繪圖 DRAWING
A-12



圖例 LEGEND

- 申請地點 (界線只作識別用)
APPLICATION SITE (BOUNDARY FOR IDENTIFICATION PURPOSE ONLY)
- 最高建築物高度 (樓層數目)
MAXIMUM BUILDING HEIGHT (in No. of Storeys)
- 地積比率限制 (住宅/非住宅)
PLOT RATIO RESTRICTION (DOMESTIC/NON-DOMESTIC)
- 現有建築物地積比率
TOTAL PLOT RATIO OF EXISTING BUILDING
- 已落成建築物高度 (在主水平基準上若干米)
HEIGHT OF EXISTING BUILDING (in m above PD)

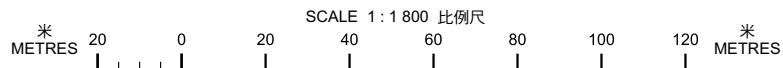
申請地點界線只作識別用
APPLICATION SITE BOUNDARY
FOR IDENTIFICATION PURPOSE ONLY

本摘要圖於2024年11月13日擬備，所根據的
資料為測量圖編號 6-NW-10C
EXTRACT PLAN PREPARED ON 13.11.2024
BASED ON SURVEY SHEET No.
6-NW-10C

平面圖 SITE PLAN

擬議略為放寬地積比率限制，以作准許的屋宇、商店及服務行業和社會福利設施(安老院舍)用途
元朗丈量約份第120約地段第3678號

PROPOSED MINOR RELAXATION OF PLOT RATIO RESTRICTION FOR
PERMITTED FLAT WITH SHOP AND SERVICES AND
SOCIAL WELFARE FACILITY (RESIDENTIAL CARE HOME FOR THE ELDERLY) USES
LOT 3678 IN D.D. 120, YUEN LONG

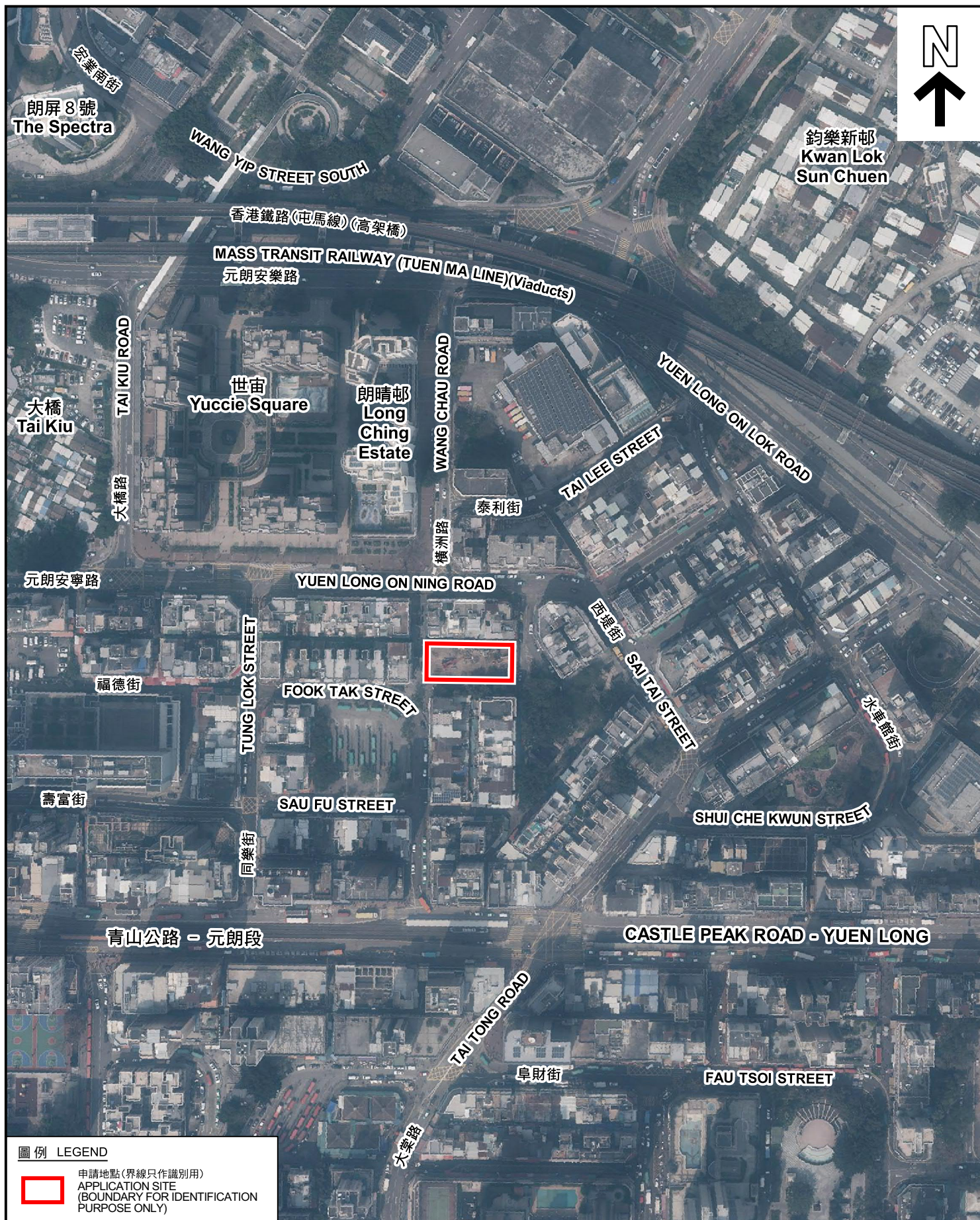


規劃署
PLANNING
DEPARTMENT



參考編號
REFERENCE No.
A/YL/319

圖 PLAN
A-1b



圖例 LEGEND



申請地點(界線只作識別用)
APPLICATION SITE
(BOUNDARY FOR IDENTIFICATION
PURPOSE ONLY)

本摘要圖於2024年9月11日擬備，所根據的資料為地政總署於2023年2月24日拍得的航攝照片編號 E187776C
EXTRACT PLAN PREPARED ON 11.9.2024
BASED ON AERIAL PHOTO No.
E187776C TAKEN ON 24.2.2023
BY LANDS DEPARTMENT

航攝照片 AERIAL PHOTO

擬議略為放寬地積比率限制，以作准許的屋宇、商店及服務行業和社會福利設施(安老院舍)用途
元朗丈量約份第120約地段第3678號
PROPOSED MINOR RELAXATION OF PLOT RATIO RESTRICTION FOR
PERMITTED FLAT WITH SHOP AND SERVICES AND
SOCIAL WELFARE FACILITY
(RESIDENTIAL CARE HOME FOR THE ELDERLY) USES
LOT 3678 IN D.D. 120, YUEN LONG

規劃署
PLANNING
DEPARTMENT



參考編號
REFERENCE No.
A/YL/319

圖 PLAN
A-3



實地照片 SITE PHOTOS

本圖於2024年11月18日擬備，所根據的資料為攝於2024年11月15日的實地照片
PLAN PREPARED ON 18.11.2024
BASED ON SITE PHOTOS
TAKEN ON 15.11.2024

擬議略為放寬地積比率限制，以作准許的屋宇、商店及服務行業和社會福利設施(安老院舍)用途
元朗丈量約份第120約地段第3678號
PROPOSED MINOR RELAXATION OF PLOT RATIO RESTRICTION FOR PERMITTED FLAT WITH SHOP AND SERVICES AND SOCIAL WELFARE FACILITY (RESIDENTIAL CARE HOME FOR THE ELDERLY) USES LOT 3678 IN D.D. 120, YUEN LONG

規劃署
PLANNING
DEPARTMENT



參考編號
REFERENCE No.
A/YL/319

圖 PLAN
A-4