



Proposed Redevelopment of Pok Oi Hospital
Yeung Chun Pui Care and Attention Home in Yuen Long

SITE LOCATION PLAN

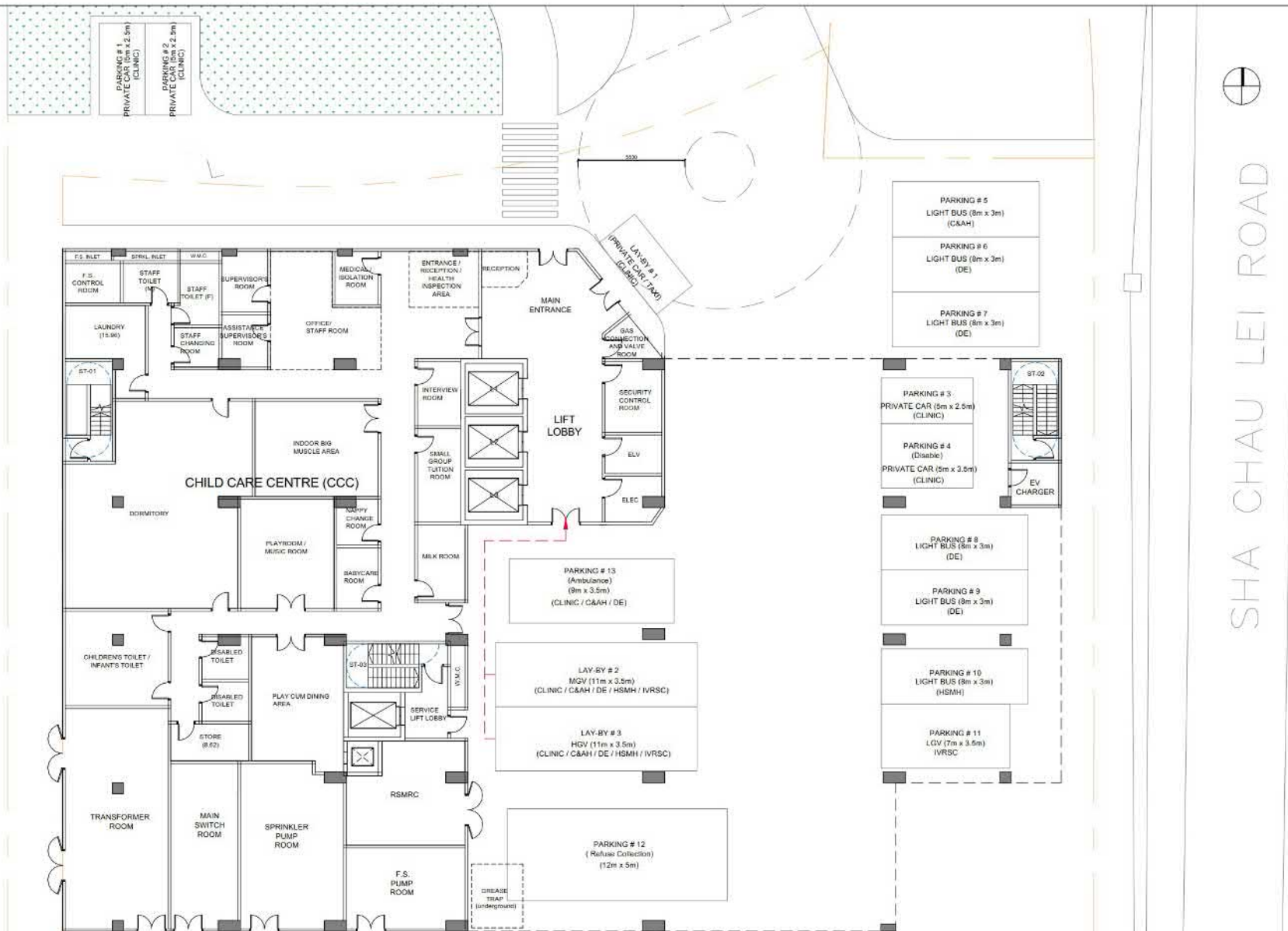
Date : 14 JUN 2024
Scale : 1:500 (A3)



(摘錄自申請人於 17.1.2025 呈交的整合規劃綱領)
(Extract from Applicant's Consolidated
SPS Submitted on 17.1.2025)

參考編號
REFERENCE No.
Y/HSK/1

繪圖 DRAWING
Z-1



*Note: The layout plans provided in the S12A Planning Application are indicative only and are subjected to approval by the relevant Government Departments in the TFS and detailed design stage.

Proposed Redevelopment of Pok Oi Hospital
Yeung Chun Pui Care and Attention Home in Yuen Long

GROUND FLOOR PLAN

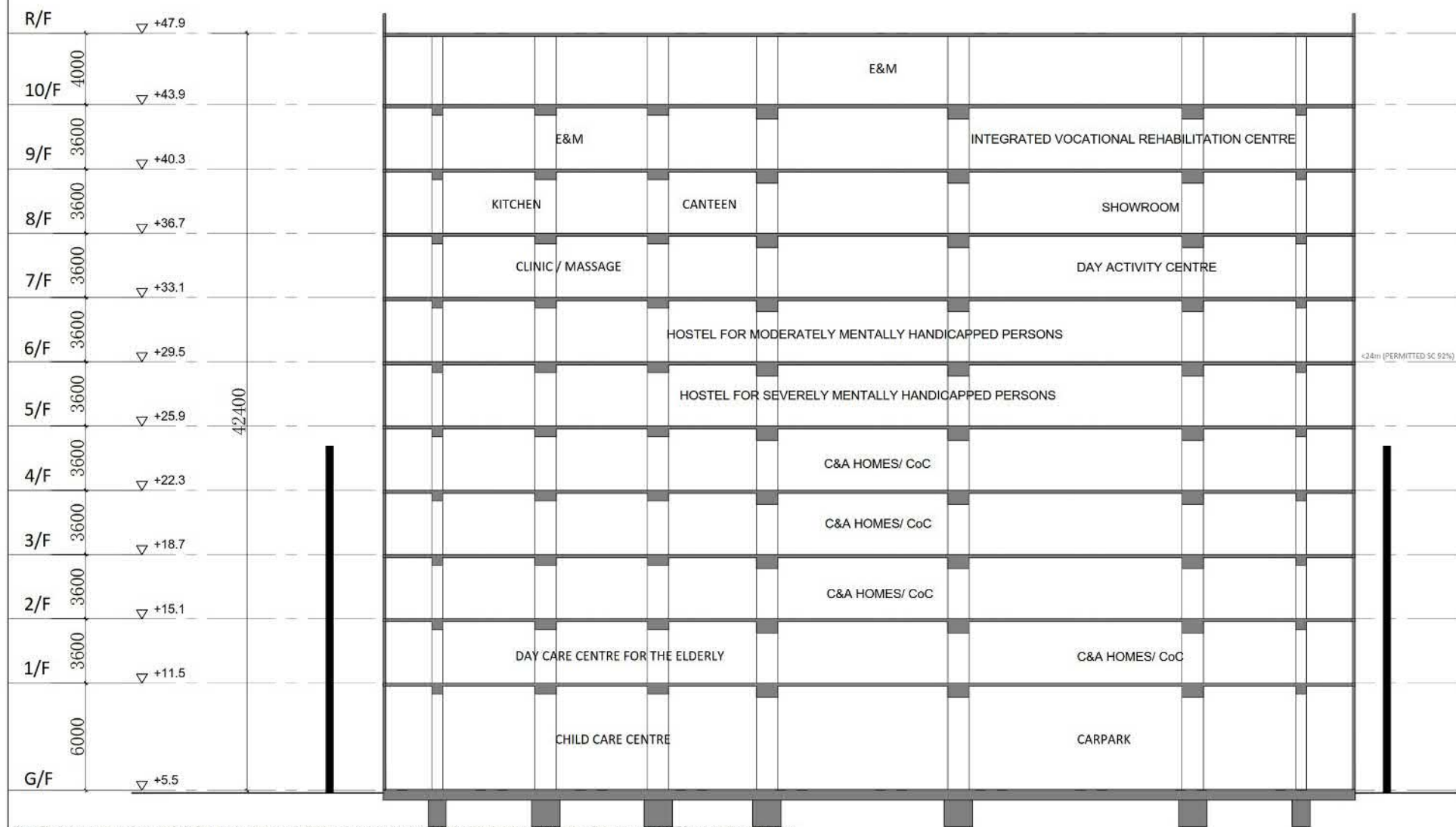
Date : 14 JUN 2024
Scale : 1:200 (A3)



(摘錄自申請人於 17.1.2025 呈交的整合規劃綱領)
(Extract from Applicant's Consolidated
SPS Submitted on 17.1.2025)

參考編號
REFERENCE No.
Y/HSK/1

繪圖 DRAWING
Z-2



*Note: The layout plans provided in the S12A Planning Application are indicative only and are subjected to approval by the relevant Government Departments in the TFS and detailed design stage.

Proposed Redevelopment of Pok Oi Hospital
Yeung Chun Pui Care and Attention Home in Yuen Long

SCHEMATIC SECTION

Date : 14 JUN 2024

Scale : 1 : 200 (A3)



(摘錄自申請人於 17.1.2025 呈交的整合規劃綱領)
(Extract from Applicant's Consolidated
SPS Submitted on 17.1.2025)

參考編號
REFERENCE No.
Y/HSK/1

繪圖 DRAWING
Z-3



AECOM

PROJECT

PROPOSED DEVELOPMENT OF
POK OI HOSPITAL YUNG CHUN
PUI CARE AND ATTENTION HOME
IN YUEN LONG

CLIENT

CONSULTANT

AECOM Asia Company Ltd.
www.aecom.com

SUB-CONSULTANTS

ISSUE/REVISION

NO.	DATE	DESCRIPTION	CHK.
1			
2			
3			
4			
5			

STATUS

100%

SCALE

1:100

METRES

(摘錄自申請人於 17.1.2025 呈交的整合規劃綱領)
(Extract from Applicant's Consolidated
SPS Submitted on 17.1.2025)

參考編號
REFERENCE No.
Y/HSK/1

繪圖 DRAWING
Z-4

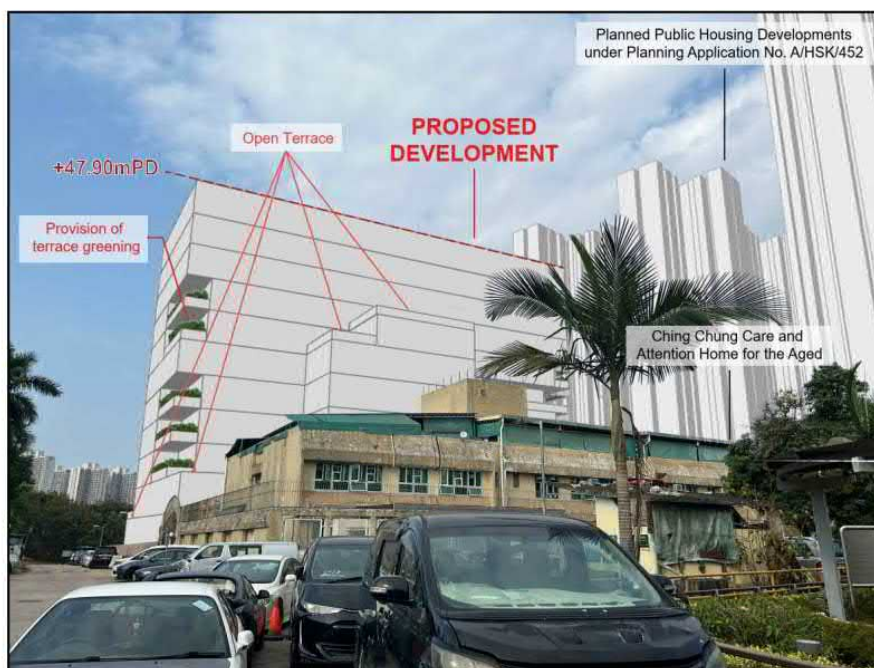
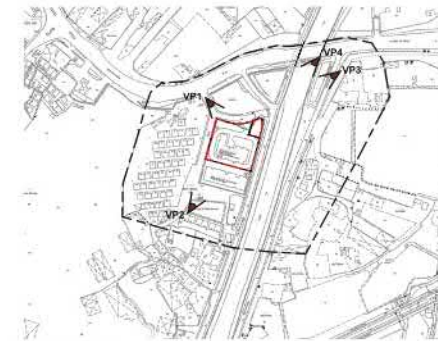


Figure 3.1 Proposed Stepped Terrace Design on 1/F, 2/F, 6/F and 7/F



Figure 3.2 Provision of Building Setback



KEY PLAN

AECOM

PROJECT

PROPOSED DEVELOPMENT OF
POK OI HOSPITAL YEUNG CHUN
PUI CARE AND ATTENTION
HOME IN YUEN LONG

CLIENT

CONSULTANT

P&T Architects Limited

SUB-CONSULTANTS

AECOM Asia Company Ltd.
www.aecom.com

ISSUE/REVISION

NO.	DATE	DESCRIPTION	CHK.

STATUS

SCALE	DIMENSION UNIT
1:50	METRES

PROJECT NO.

60725280

SHEET TITLE

PHOTOMONTAGE AT VP1 -
SHA CHAU LEI TSUEN CARPARK

SHEET NUMBER

Figure 3



Existing Condition



Proposed Development

(摘錄自申請人於 17.1.2025 呈交的整合規劃綱領)
(Extract from Applicant's Consolidated
SPS Submitted on 17.1.2025)

參考編號
REFERENCE No.
Y/HSK/1

繪圖 DRAWING
Z-6



KEY PLAN

AECOM

PROJECT

PROPOSED DEVELOPMENT OF
POK OF HOSPITAL YEUNG CHUN
PUI CARE AND ATTENTION
HOME IN YUEN LONG

CLIENT

CONSULTANT

P&T Architects Limited

SUB-CONSULTANTS

AECOM Asia Company Ltd.
www.aecom.com

ISSUE/REVISION

ISSUE/REVISION	DATE	DESCRIPTION	CHK.

STATUS

SCALE	DIMENSION UNIT
1:50	METRES

PROJECT NO.

60725280

SHEET TITLE

PHOTOMONTAGE AT VP2 -
SHA CHAU LEI SITTING-OUT AREA

SHEET NUMBER

Figure 4



Existing Condition



Proposed Development

(摘錄自申請人於 17.1.2025 呈交的整合規劃綱領)
(Extract from Applicant's Consolidated
SPS Submitted on 17.1.2025)

參考編號
REFERENCE No.
Y/HSK/1

繪圖 DRAWING
Z-7



KEY PLAN



PROJECT

PROPOSED DEVELOPMENT OF
POK OI HOSPITAL YEUNG CHUN
PUI CARE AND ATTENTION
HOME IN YUEN LONG

CLIENT

CONSULTANT

P&T Architects Limited

SUB-CONSULTANTS

AECOM Asia Company Ltd.
www.aecom.com

ISSUE/REVISION

[illegible]

STATUS

SCALE

WATER

100

PROJECT NO.

60725280

SHEET TITLE

PHOTOMONTAGE AT VP3 -
SHEK PO ROAD, NEAR
INTERSECTION WITH TIN SHUI PATH

SHEET NUMBER

Figure 5



Existing Condition

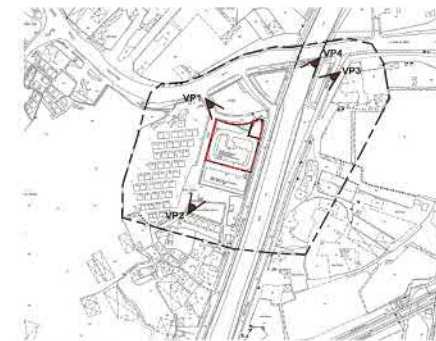


Proposed Development

(摘錄自申請人於 17.1.2025 呈交的整合規劃綱領)
(Extract from Applicant's Consolidated
SPS Submitted on 17.1.2025)

參考編號
REFERENCE No.
Y/HSK/1

繪圖 DRAWING
Z-8



KEY PLAN

AECOM

PROJECT

PROPOSED DEVELOPMENT OF
POK OF HOSPITAL YEUNG CHUN
PUI CARE AND ATTENTION
HOME IN YUEN LONG

CLIENT

CONSULTANT

P&T Architects Limited

SUB-CONSULTANTS

AECOM Asia Company Ltd.
www.aecom.com

ISSUE/REVISION

ISSUE/REVISION	DATE	DESCRIPTION	CHK.

STATUS

SCALE	DIMENSION UNIT
1:500	METRES

PROJECT NO.

60725280

SHEET TITLE

PHOTOMONTAGE AT VP4 -
PING HA ROAD, NEAR
INTERSECTION WITH SHEK PO ROAD

SHEET NUMBER

Figure 6



Existing Condition

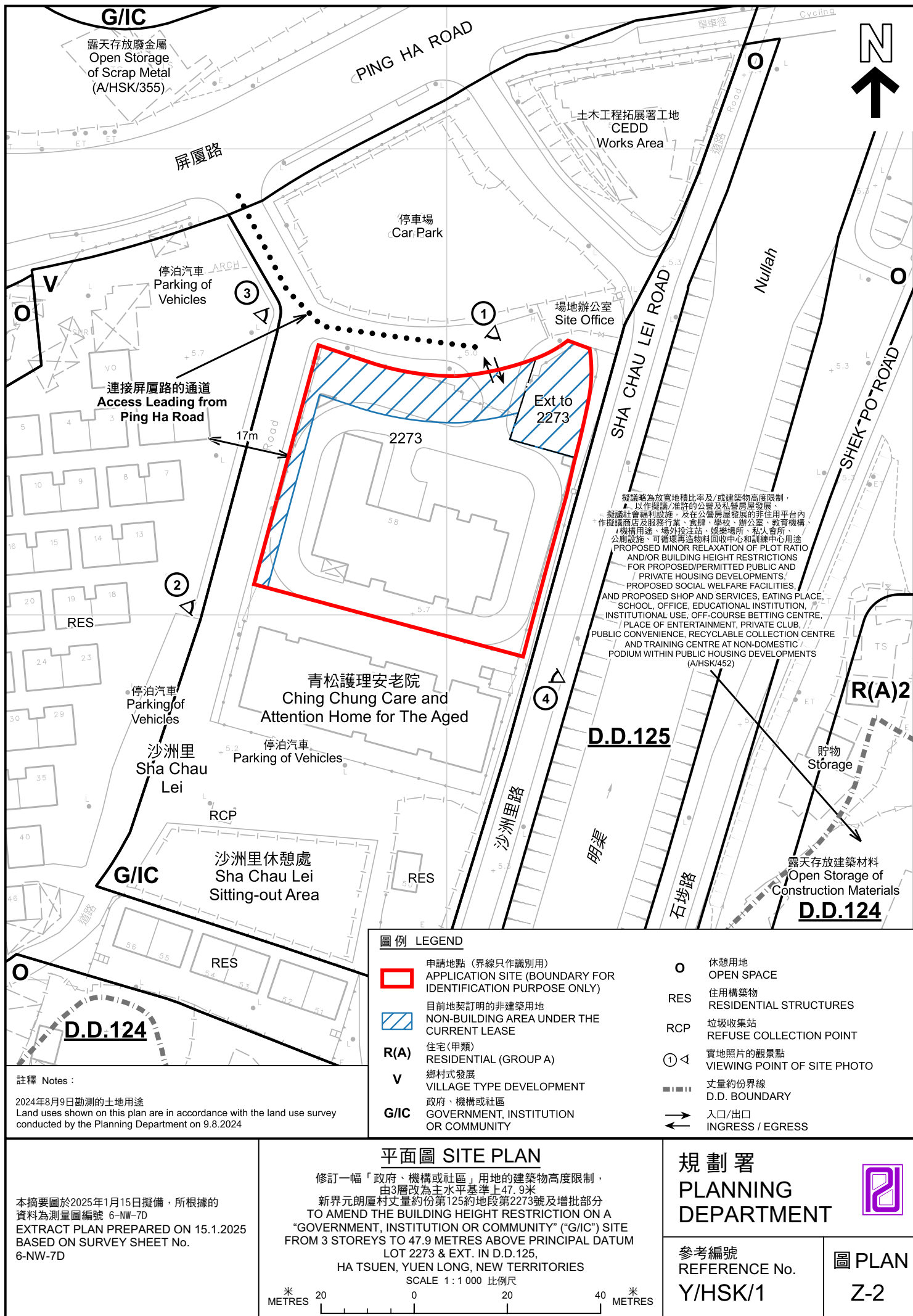


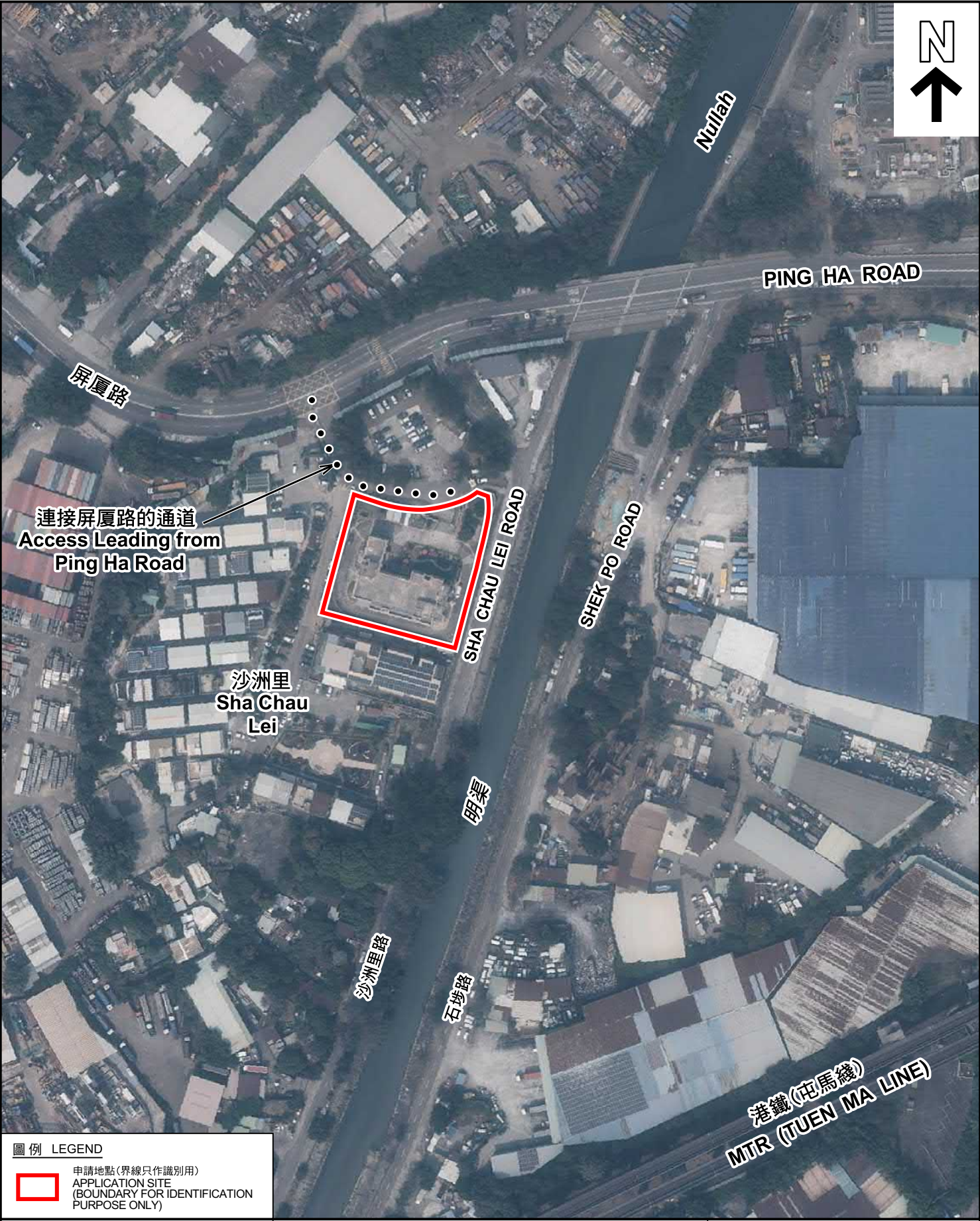
Proposed Development

(摘錄自申請人於 17.1.2025 呈交的整合規劃綱領)
(Extract from Applicant's Consolidated
SPS Submitted on 17.1.2025)

參考編號
REFERENCE No.
Y/HSK/1

繪圖 DRAWING
Z-9





圖例 LEGEND

 申請地點(界線只作識別用)
APPLICATION SITE
(BOUNDARY FOR IDENTIFICATION
PURPOSE ONLY)

本摘要圖於2024年12月23日擬備，所根據的資料為地政總署於2023年2月24日拍得的航攝照片編號 E187792C
EXTRACT PLAN PREPARED ON 23.12.2024
BASED ON AERIAL PHOTO No.
E187792C TAKEN ON 24.2.2023
BY LANDS DEPARTMENT

航攝照片 AERIAL PHOTO

修訂一幅「政府、機構或社區」用地的建築物高度限制，
由3層改為主水平基準上47.9米
新界元朗厦村丈量約份第125約地段第2273號及增批部分
TO AMEND THE BUILDING HEIGHT RESTRICTION ON A
"GOVERNMENT, INSTITUTION OR COMMUNITY" ("G/I/C") SITE
FROM 3 STOREYS TO 47.9 METRES ABOVE PRINCIPAL DATUM
LOT 2273 & EXT. IN D.D.125,
HA TSUEN, YUEN LONG, NEW TERRITORIES

規劃署
PLANNING
DEPARTMENT



參考編號
REFERENCE No.
Y/HSK/1

圖 PLAN
Z-3



實地照片 SITE PHOTOS

修訂一幅「政府、機構或社區」用地的建築物高度限制，
由3層改為主水平基準上47.9米
新界元朗廈村丈量約份第125約地段第2273號及增批部分
TO AMEND THE BUILDING HEIGHT RESTRICTION ON A
"GOVERNMENT, INSTITUTION OR COMMUNITY" ("G/I/C") SITE
FROM 3 STOREYS TO 47.9 METRES ABOVE PRINCIPAL DATUM
LOT 2273 & EXT. IN D.D.125,
HA TSUEN, YUEN LONG, NEW TERRITORIES

規 劃 署
PLANNING
DEPARTMENT



參考編號
REFERENCE No.
Y/HSK/1

圖 PLAN
Z-4

本圖於2024年12月16日擬備，所根據的
資料為攝於2024年11月13日的實地照片
PLAN PREPARED ON 16.12.2024
BASED ON SITE PHOTOS
TAKEN ON 13.11.2024