

B2/F LAYOUT PLAN

- This drawing and the contents are the copyright of I Consultants & Contracting Co. Ltd.
 - No part of the drawing and the design contained herein may be reproduced without the prior written consent of a director of I Consultants & Contracting Co. Ltd.
 - Do not take measurements directly from this drawing.
 - Check and verify all dimensions on site.
 - Read this drawing in conjunction with the specifications and all other related drawings.
 - Notify the architect immediately of any discrepancy found herein.

Rev. Date Description
 Project Name:
 Redevelopment of
 Yuen Long Theatre
 at Lot No. 367/8 in
 D.D. 120, Yuen Long, N.T.

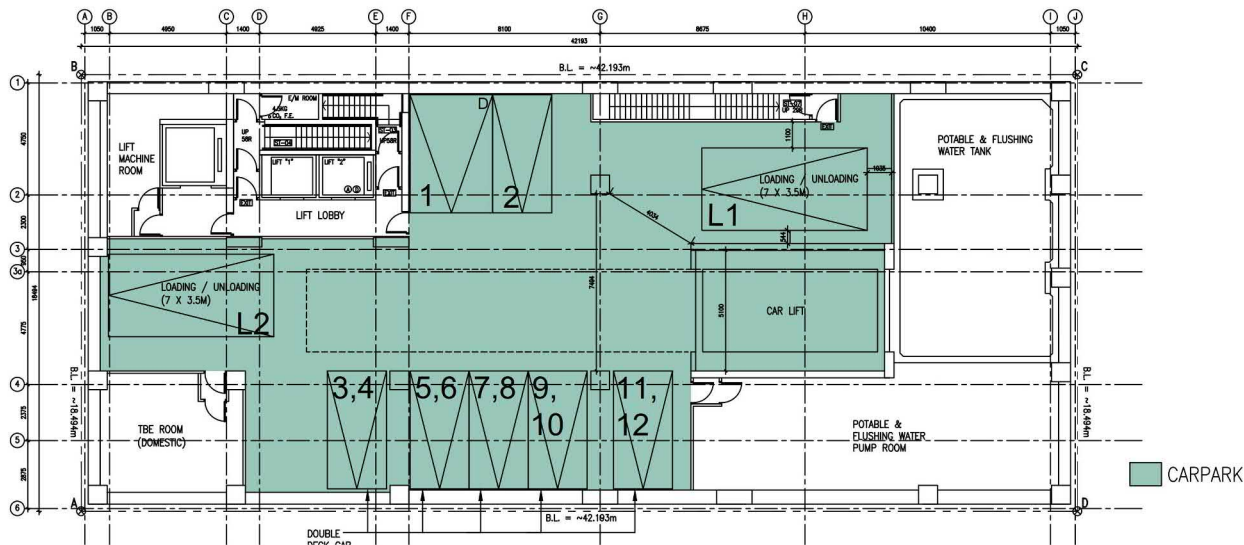
Planning Consultant:
 DeSPACE (International) Limited
 Architect:
 I Consultants & Contracting Company Limited
 Traffic Consultant:
 CTA Consultants Limited
 Environmental Consultant:
 BenKeng Consulting Limited
 Structural and Geotechnical Engineer:
 S. T. Wong & Partners Limited

Drawing Title:
 B2/F LAYOUT PLAN

Designed by: JODY
 Drawn by: JODY
 Checked by: CAL
 Paper: A3
 Drawing Number:
 GBP001

(摘錄自申請人於 10.12.2024 呈交的申請書)
 (Extract from Applicant's
 Submission of 10.12.2024)

參考編號
 REFERENCE No.
 Y/YL/21
 繪圖 DRAWING
 Z-1



B1/F LAYOUT PLAN

- This drawing and the contents are the copyright of I Consultants & Contracting Co. Ltd.
 - No part of the drawing and the design contained herein may be reproduced without the prior written consent of a director of I Consultants & Contracting Co. Ltd.
 - Do not take measurements directly from this drawing.
 - Check and verify all dimensions on site.
 - Read this drawing in conjunction with the specifications and all other related drawings.
 - Notify the architect immediately of any discrepancy found herein.

Rev. Date Description
 Project Name:
 Redevelopment of
 Yuen Long Theatre
 at Lot No. 367/8 in
 D.D. 120, Yuen Long, N.T.

Planning Consultant:
 DeSPACE (International) Limited

Architect:
 I Consultants & Contracting Company Limited

Traffic Consultant:
 CTA Consultants Limited

Environmental Consultant:
 BenKeng Consulting Limited

Structural and Geotechnical Engineer:
 S. T. Wong & Partners Limited

Drawing Title:
 B1/F LAYOUT PLAN

Designed by: JODY

Drawn by: JODY

Checked by: CAL

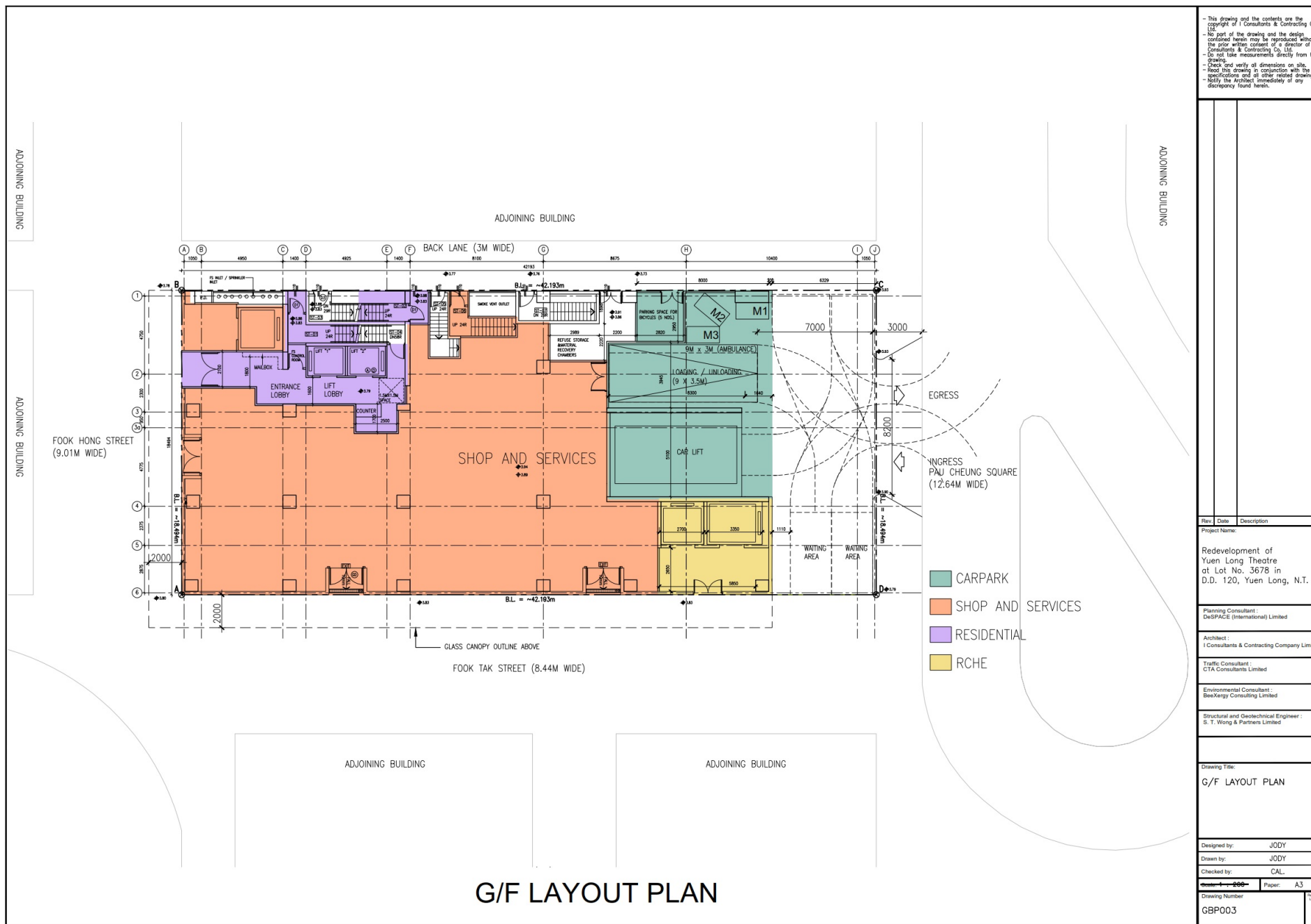
Scale: 1:1000 Paper: A3

Drawing Number:
 GBP002

(摘錄自申請人於 10. 12. 2024 呈交的申請書)
 (Extract from Applicant's
 Submission of 10.12.2024)

參考編號
 REFERENCE No.
 Y/YL/21

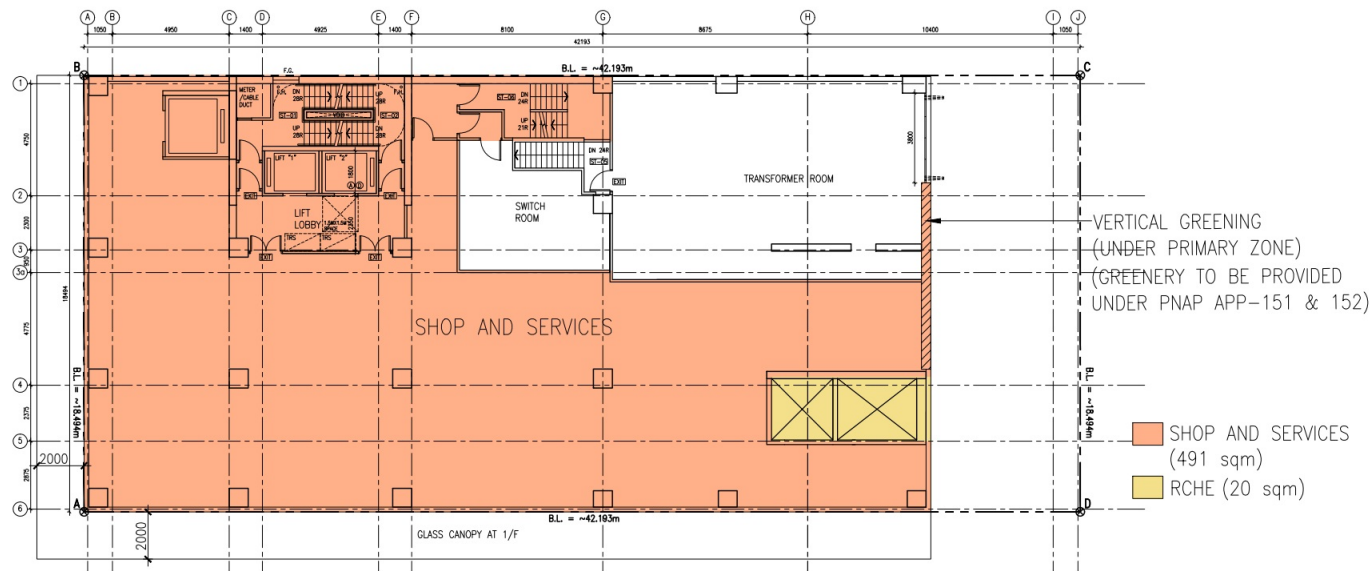
繪圖 DRAWING
 Z-2



(摘錄自申請人於 16. 1. 2025 呈交的進一步資料)
(Extract from Applicant's Further
Information Submitted on 16.1.2025)

參考編號
REFERENCE No.
Y/YL/21

繪圖 DRAWING
Z-3



1/F LAYOUT PLAN

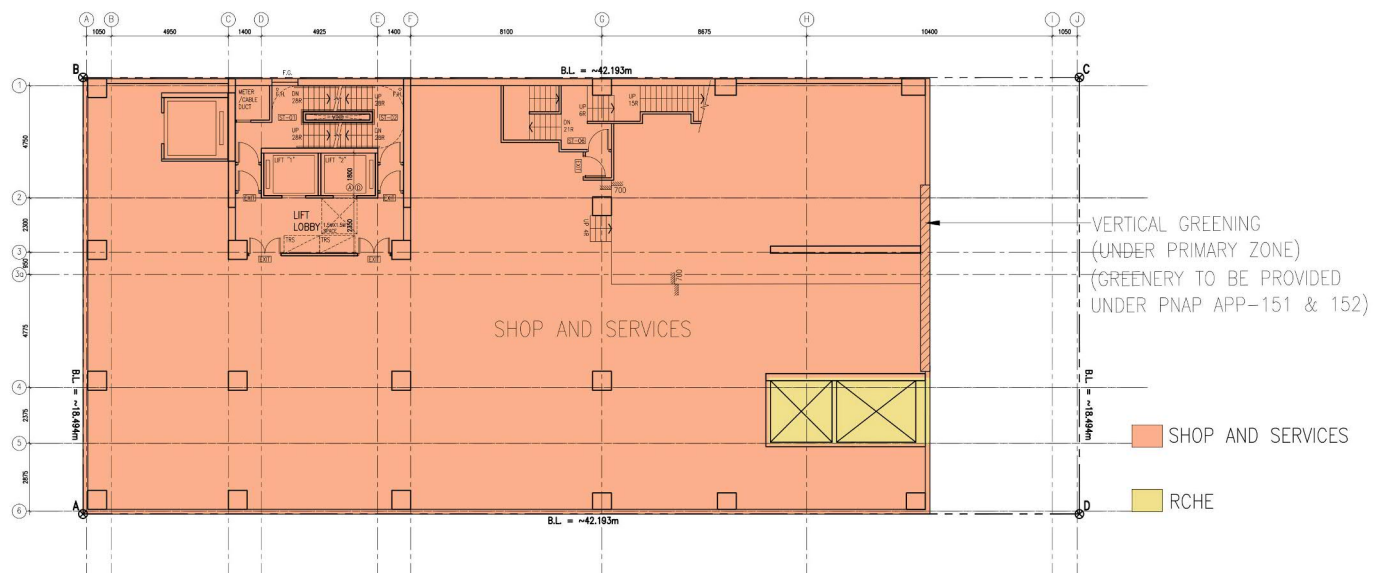
- This drawing and the contents are the copyright of I Consultants & Contracting Co. Ltd.
 No part of the drawing and the design contained herein may be reproduced without the prior written consent of a director of I Consultants & Contracting Co. Ltd.
 Do not take measurements directly from this drawing.
 Check and verify all dimensions on site.
 Read this drawing in conjunction with the specifications and all other related drawings.
 Notify the Architect immediately of any discrepancy found herein.

Rev.	Date	Description
Project Name:		
Redevelopment of Yuen Long Theatre at Lot No. 3678 in D.D. 120, Yuen Long, N.T.		
Planning Consultant : DeSPACE (International) Limited		
Architect : I Consultants & Contracting Company Limited		
Traffic Consultant : CTA Consultants Limited		
Environmental Consultant : BeeKong Consulting Limited		
Structural and Geotechnical Engineer : S. T. Wong & Partners Limited		
Drawing Title:		
1/F LAYOUT PLAN		
Designed by:		JODY
Drawn by:		JODY
Checked by:		CAL
Sheet No. 000	Page:	A3
Drawing Number		GBP004A

(摘錄自申請人於 16. 1. 2025 呈交的進一步資料)
 (Extract from Applicant's Further Information Submitted on 16.1.2025)

參考編號
 REFERENCE No.
 Y/YL/21

繪圖 DRAWING
 Z-4



2/F LAYOUT PLAN

- This drawing and the contents are the copyright of I Consultants & Contracting Co. Ltd.
 - No part of the drawing and the design contained herein may be reproduced without the prior written consent of a director of I Consultants & Contracting Co. Ltd.
 - Do not take measurements directly from this drawing.
 - Check and verify all dimensions on site.
 - Read this drawing in conjunction with the specifications and all other related drawings.
 - Notify the Architect immediately of any discrepancy found herein.

Rev. Date Description
 Project Name:

Redevelopment of
 Yuen Long Theatre
 at Lot No. 3678 in
 D.D. 120, Yuen Long, N.T.

Planning Consultant:
 GDSPACE (International) Limited

Architect:
 I Consultants & Contracting Company Limited

Traffic Consultant:
 CTA Consultants Limited

Environmental Consultant:
 BeeKerry Consulting Limited

Structural and Geotechnical Engineer:
 S. T. Wong & Partners Limited

Drawing Title:
 2/F LAYOUT PLAN

Designed by: JODY

Drawn by: JODY

Checked by: CAL

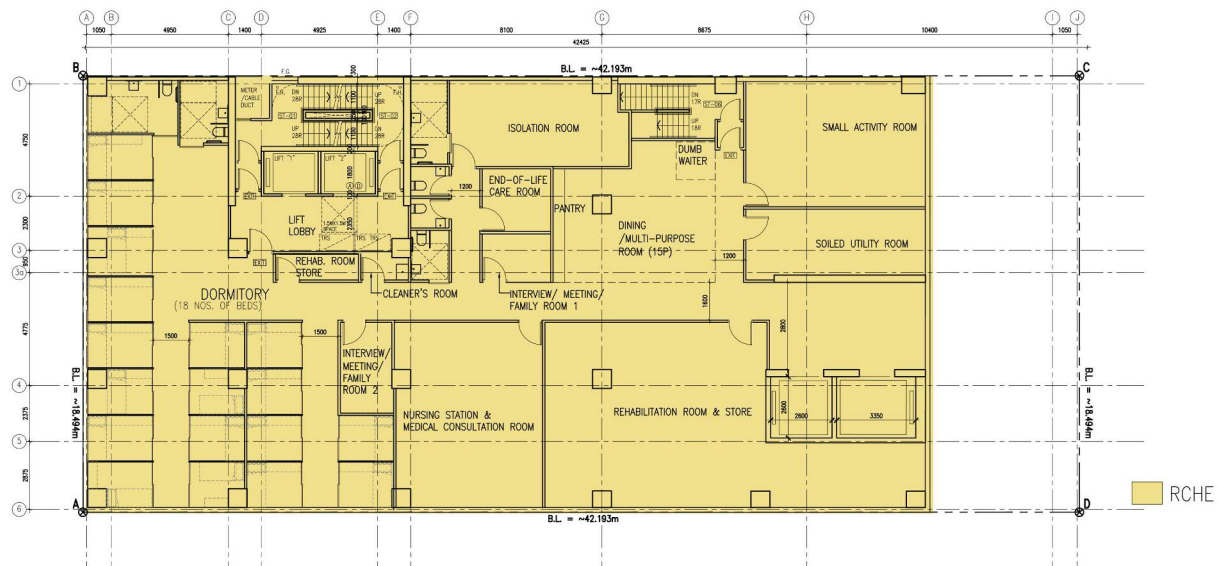
Paper: A3

Drawing Number:
 GBP0004B

(摘錄自申請人於 10. 12. 2024 呈交的申請書)
 (Extract from Applicant's
 Submission of 10.12.2024)

參考編號
 REFERENCE No.
 Y/YL/21

繪圖 DRAWING
 Z-5



3/F LAYOUT PLAN
(DORMITORY FOR RCHE)

- This drawing and the contents are the copyright of I Consultants & Contracting Co. Ltd.
- No part of the drawing and the design contained herein may be reproduced without the prior written consent of a director of I Consultants & Contracting Co. Ltd.
- Do not take measurements directly from this drawing.
- Check and verify all dimensions on site.
- Read this drawing in conjunction with the specifications and all other related drawings.
- Notify the Architect immediately of any discrepancy found herein.

Rev. Date Description
Project Name:

Redevelopment of
Yuen Long Theatre
at Lot No. 3678 in
D.D. 120, Yuen Long, N.T.

Planning Consultant:
GSPAC (International) Limited

Architect:
I Consultants & Contracting Company Limited

Traffic Consultant:
CTA Consultants Limited

Environmental Consultant:
BeeKerry Consulting Limited

Structural and Geotechnical Engineer:
S. T. Wong & Partners Limited

Drawing Title:
3/F LAYOUT PLAN

Designed by: JODY

Drawn by: JODY

Checked by: CAL

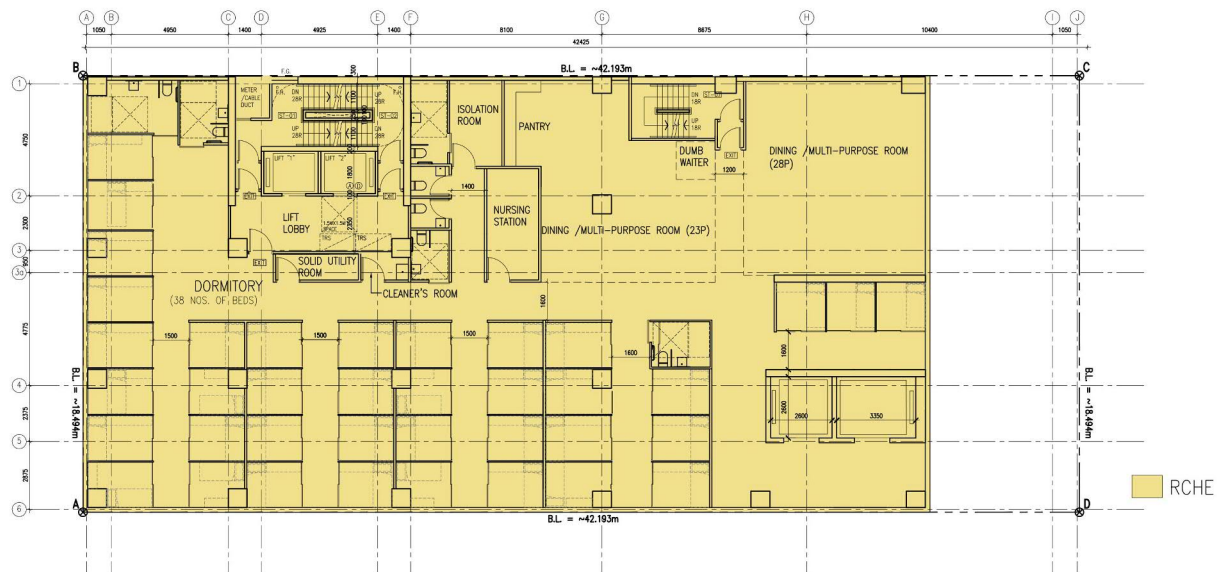
Paper: A3

Drawing Number:
GBP005

(摘錄自申請人於 10. 12. 2024 呈交的申請書)
(Extract from Applicant's
Submission of 10.12.2024)

參考編號
REFERENCE No.
Y/YL/21

繪圖 DRAWING
Z-6



4/F TO 7/F LAYOUT PLAN
(DORMITORY FOR RCHE)

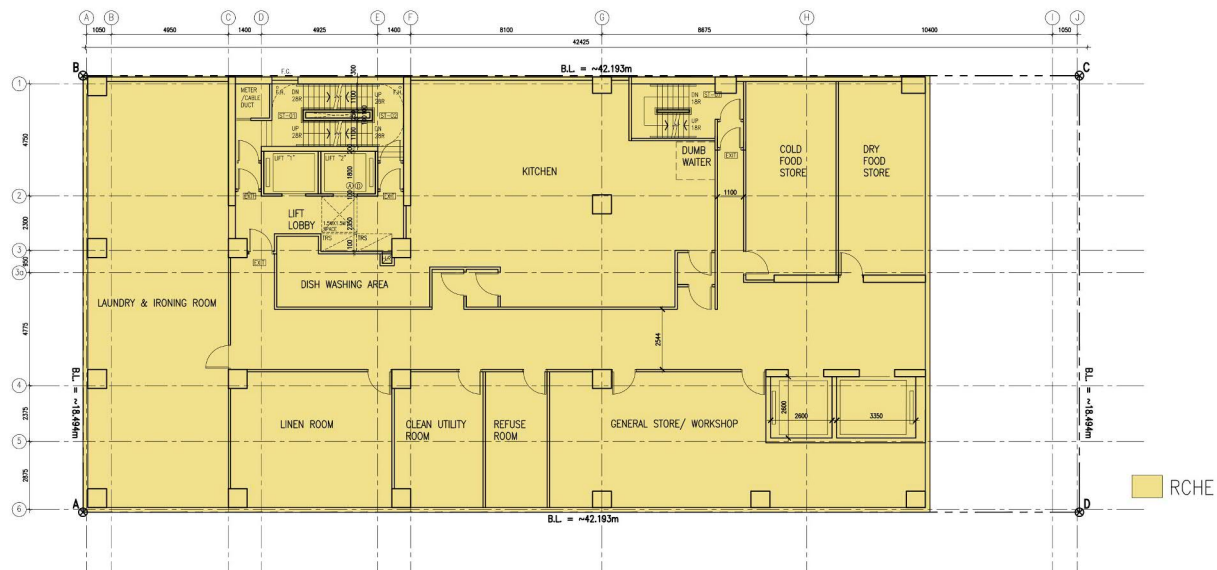
- This drawing and the contents are the copyright of I Consultants & Contracting Co. Ltd.
- No part of the drawing and the design contained herein may be reproduced without the prior written consent of a director of I Consultants & Contracting Co. Ltd.
- Do not take measurements directly from this drawing.
- Check and verify all dimensions on site.
- Read this drawing in conjunction with the specifications and all other related drawings.
- Notify the Architect immediately of any discrepancy found herein.

Rev.	Date	Description
Project Name:		
Redevelopment of Yuen Long Theatre at Lot No. 3678 in D.D. 120, Yuen Long, N.T.		
Planning Consultant: GSPACE (International) Limited		
Architect: I Consultants & Contracting Company Limited		
Traffic Consultant: CTA Consultants Limited		
Environmental Consultant: BeeKong Consulting Limited		
Structural and Geotechnical Engineer: S. T. Wong & Partners Limited		
Drawing Title: 4/F TO 7/F LAYOUT PLAN		
Designed by: JODY		
Drawn by: JODY		
Checked by: CAL		
Paper: A3		
Drawing Number: GBP006		

(摘錄自申請人於 10. 12. 2024 呈交的申請書)
(Extract from Applicant's
Submission of 10.12.2024)

參考編號
REFERENCE No.
Y/YL/21

繪圖 DRAWING
Z-7



8/F LAYOUT PLAN
(OFFICE & BOH FOR RCHE)

- This drawing and the contents are the copyright of I Consultants & Contracting Co. Ltd.
- No part of the drawing and the design contained herein may be reproduced without the prior written consent of a director of I Consultants & Contracting Co. Ltd.
- Do not take measurements directly from this drawing.
- Check and verify all dimensions on site.
- Read this drawing in conjunction with the specifications and all other related drawings.
- Notify the Architect immediately of any discrepancy found herein.

Rev. Date Description
Project Name:

Redevelopment of
Yuen Long Theatre
at Lot No. 3678 in
D.D. 120, Yuen Long, N.T.

Planning Consultant:
GESPAC (International) Limited

Architect:
I Consultants & Contracting Company Limited

Traffic Consultant:
CTA Consultants Limited

Environmental Consultant:
BeeKerry Consulting Limited

Structural and Geotechnical Engineer:
S. T. Wong & Partners Limited

Drawing Title:
8/F LAYOUT PLAN

Designed by: JODY

Drawn by: JODY

Checked by: CAL

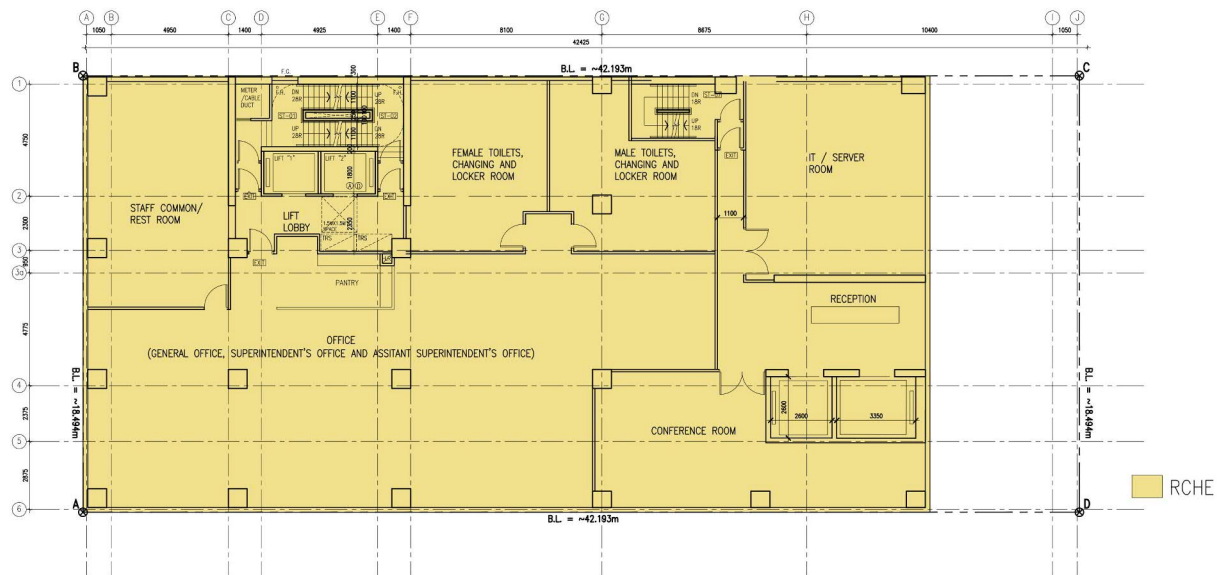
Paper: A3

Drawing Number:
GBP007

(摘錄自申請人於 10. 12. 2024 呈交的申請書)
(Extract from Applicant's
Submission of 10.12.2024)

參考編號
REFERENCE No.
Y/YL/21

繪圖 DRAWING
Z-8



9/F LAYOUT PLAN
(OFFICE & BOH FOR RCHE)

- This drawing and the contents are the copyright of I Consultants & Contracting Co. Ltd.
- No part of the drawing and the design contained herein may be reproduced without the prior written consent of a director of I Consultants & Contracting Co. Ltd.
- Do not take measurements directly from this drawing.
- Check and verify all dimensions on site.
- Read this drawing in conjunction with the specifications and all other related drawings.
- Notify the Architect immediately of any discrepancy found herein.

Rev. Date Description
Project Name:

Redevelopment of
Yuen Long Theatre
at Lot No. 3678 in
D.D. 120, Yuen Long, N.T.

Planning Consultant:
GESPAC (International) Limited

Architect:
I Consultants & Contracting Company Limited

Traffic Consultant:
CTA Consultants Limited

Environmental Consultant:
BeeKerry Consulting Limited

Structural and Geotechnical Engineer:
S. T. Wong & Partners Limited

Drawing Title:
9/F LAYOUT PLAN

Designed by: JODY

Drawn by: JODY

Checked by: CAL

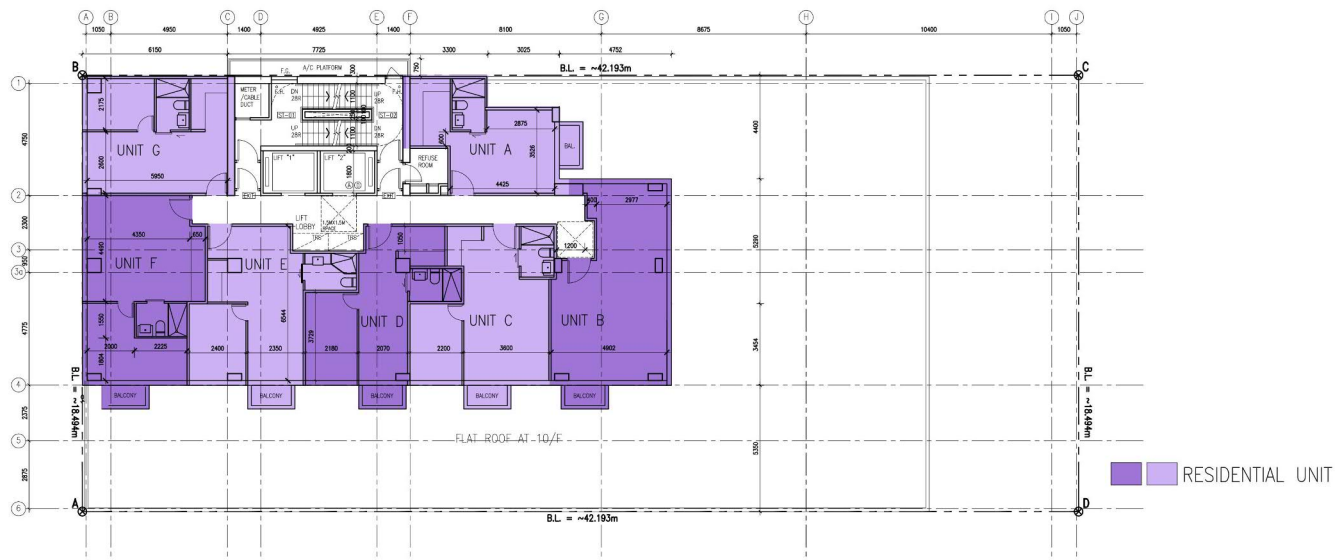
Paper: A3

Drawing Number: GBP008

(摘錄自申請人於 10. 12. 2024 呈交的申請書)
(Extract from Applicant's
Submission of 10.12.2024)

參考編號
REFERENCE No.
Y/YL/21

繪圖 DRAWING
Z-9



10/F TO 19/F LAYOUT PLAN

- This drawing and the contents are the copyright of I Consultants & Contracting Co. Ltd.
 - No part of the drawing and the design contained herein may be reproduced without the prior written consent of a director of I Consultants & Contracting Co. Ltd.
 - Do not take measurements directly from this drawing.
 - Check and verify all dimensions on site.
 - Read this drawing in conjunction with the specifications and all other related drawings.
 - Notify the Architect immediately of any discrepancy found herein.

Rev.	Date	Description
Project Name:		
Redevelopment of Yuen Long Theatre at Lot No. 3678 in D.D. 120, Yuen Long, N.T.		
Planning Consultant: GSPSPACE (International) Limited		
Architect: I Consultants & Contracting Company Limited		
Traffic Consultant: CTA Consultants Limited		
Environmental Consultant: BeeKerry Consulting Limited		
Structural and Geotechnical Engineer: S. T. Wong & Partners Limited		
Drawing Title:		
10/F TO 19/F LAYOUT PLAN		
Designed by: JODY		
Drawn by: JODY		
Checked by: CAL.		
Drawing Number: GBP009		
Paper: A3		

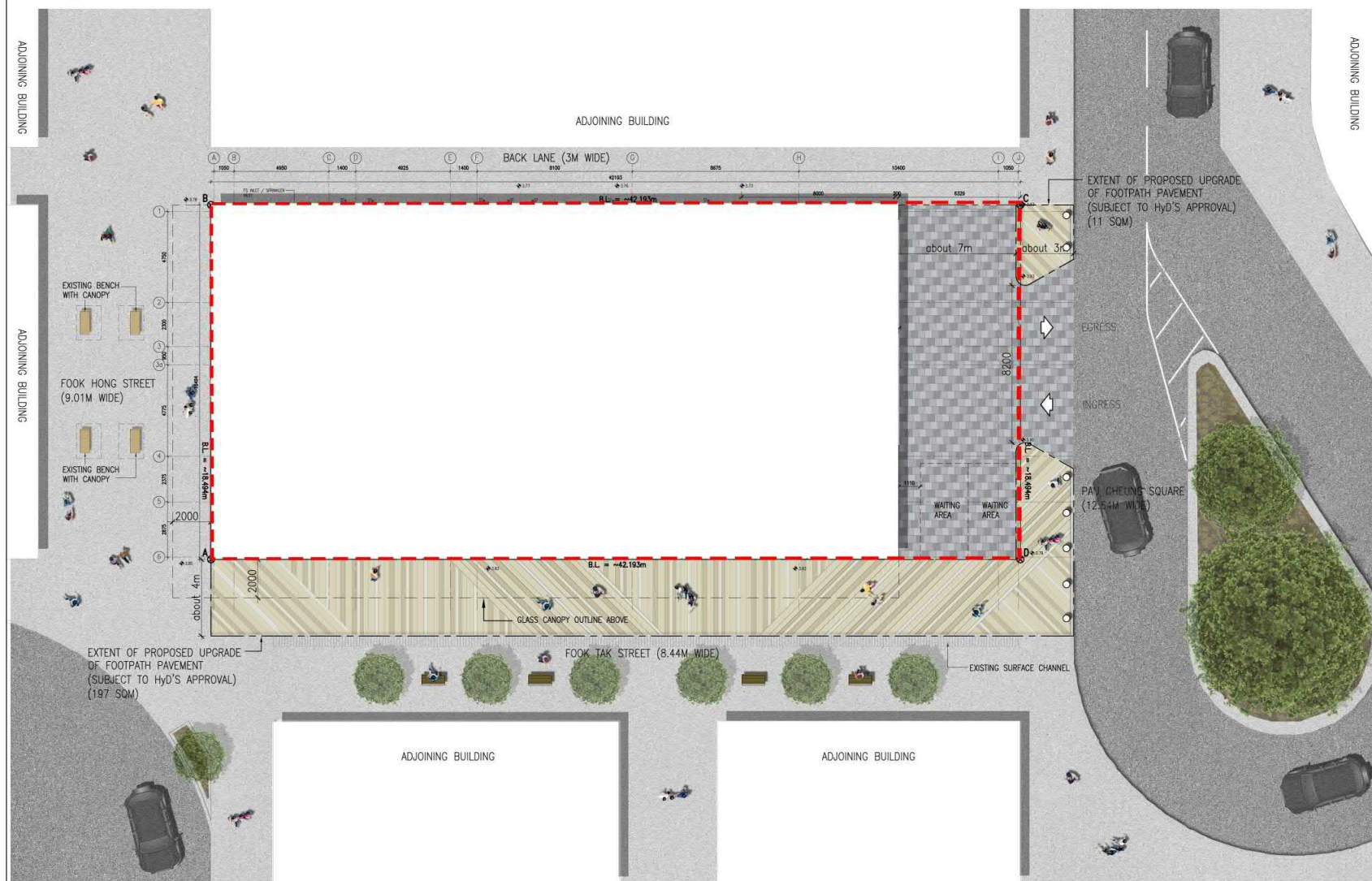
(摘錄自申請人於 10.12.2024 呈交的申請書)
 (Extract from Applicant's Submission of 10.12.2024)

參考編號 REFERENCE No. Y/YL/21	繪圖 DRAWING Z-10
----------------------------------	--------------------

LEGEND

- EXISTING TREE
- NEW BENCH
- NEW BOLLARD

- PAVING AREA (208 M²)
- SITE BOUNDARY



PROPOSED STREETSCAPE PLAN

- This drawing and the contents are the copyright of I Consultants & Contracting Co. Ltd.
 - No part of the drawing and the design contained herein may be reproduced without the prior written consent of a director of I Consultants & Contracting Co. Ltd.
 - Do not take measurements directly from this drawing.
 - Check and verify all dimensions on site.
 - Read this drawing in conjunction with the specifications and all other related drawings.
 - Notify the Architect immediately of any discrepancy found herein.

Rev.	Date	Description

Project Name:
 Redevelopment of
 Yuen Long Theatre
 at Lot No. 3678 in
 D.D. 120, Yuen Long, N.T.

Planning Consultant:
 DelSPACE (International) Limited

Architect:
 I Consultants & Contracting Company Limited

Traffic Consultant:
 CTA Consultants Limited

Environmental Consultant:
 BeeKeng Consulting Limited

Structural and Geotechnical Engineer:
 S. T. Wong & Partners Limited

Drawing Title:
 PROPOSED
 STREETSCAPE PLAN

Designed by: JODY

Drawn by: JODY

Checked by: CAL

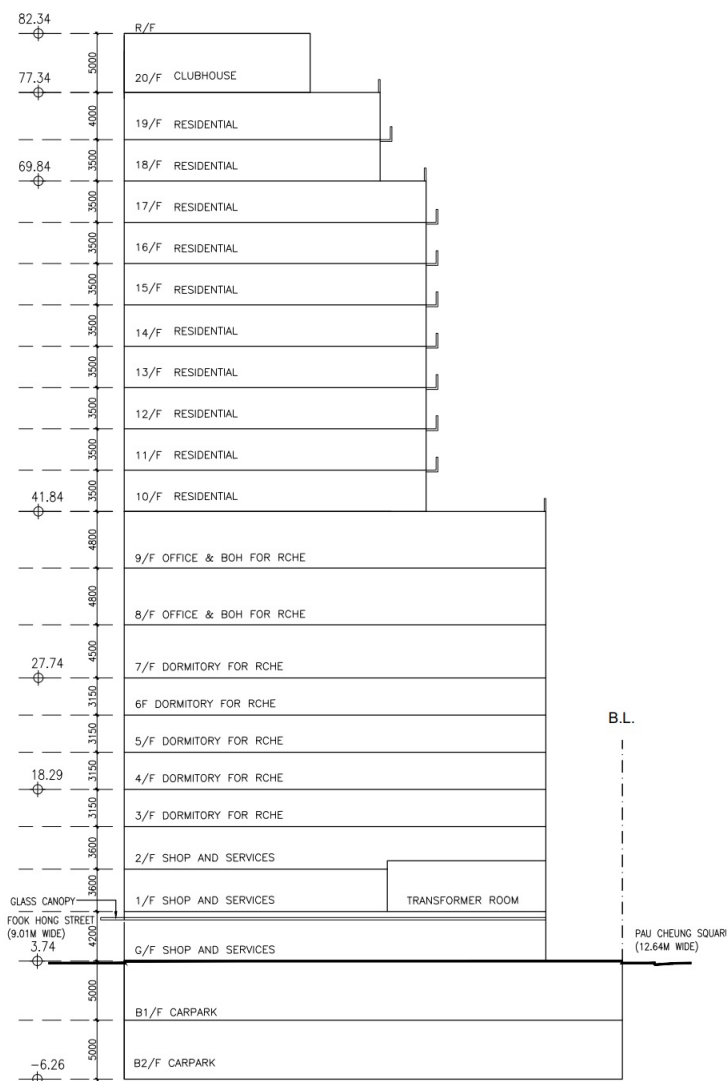
Scale: 1:1000 Paper: A3

Drawing Number:
 GBP012

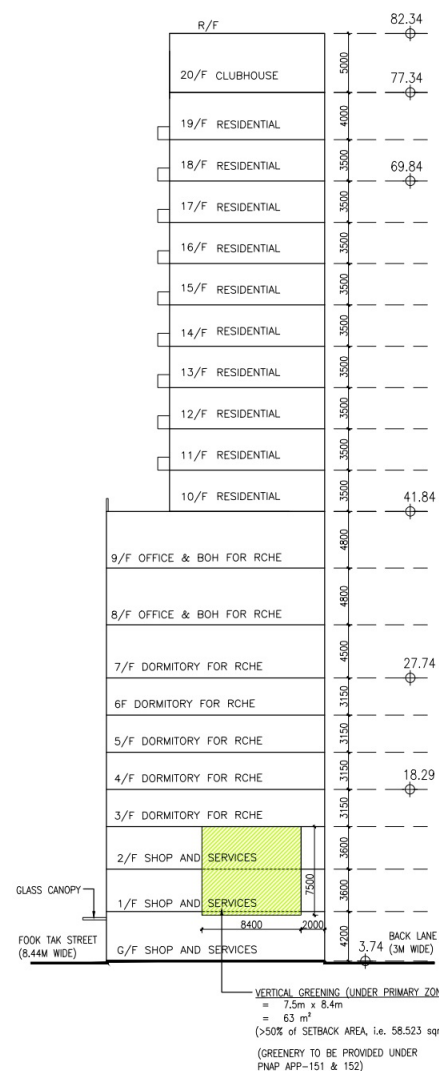
(摘錄自申請人於 16. 1. 2025 呈交的進一步資料)
 (Extract from Applicant's Further
 Information Submitted on 16.1.2025)

參考編號
 REFERENCE No.
 Y/YL/21

繪圖 DRAWING
 Z-11



**SCHEMATIC SECTION
(FACING FOOK TAK STREET)**



**SCHEMATIC ELEVATION
(FACING PAU CHEUNG SQUARE)**

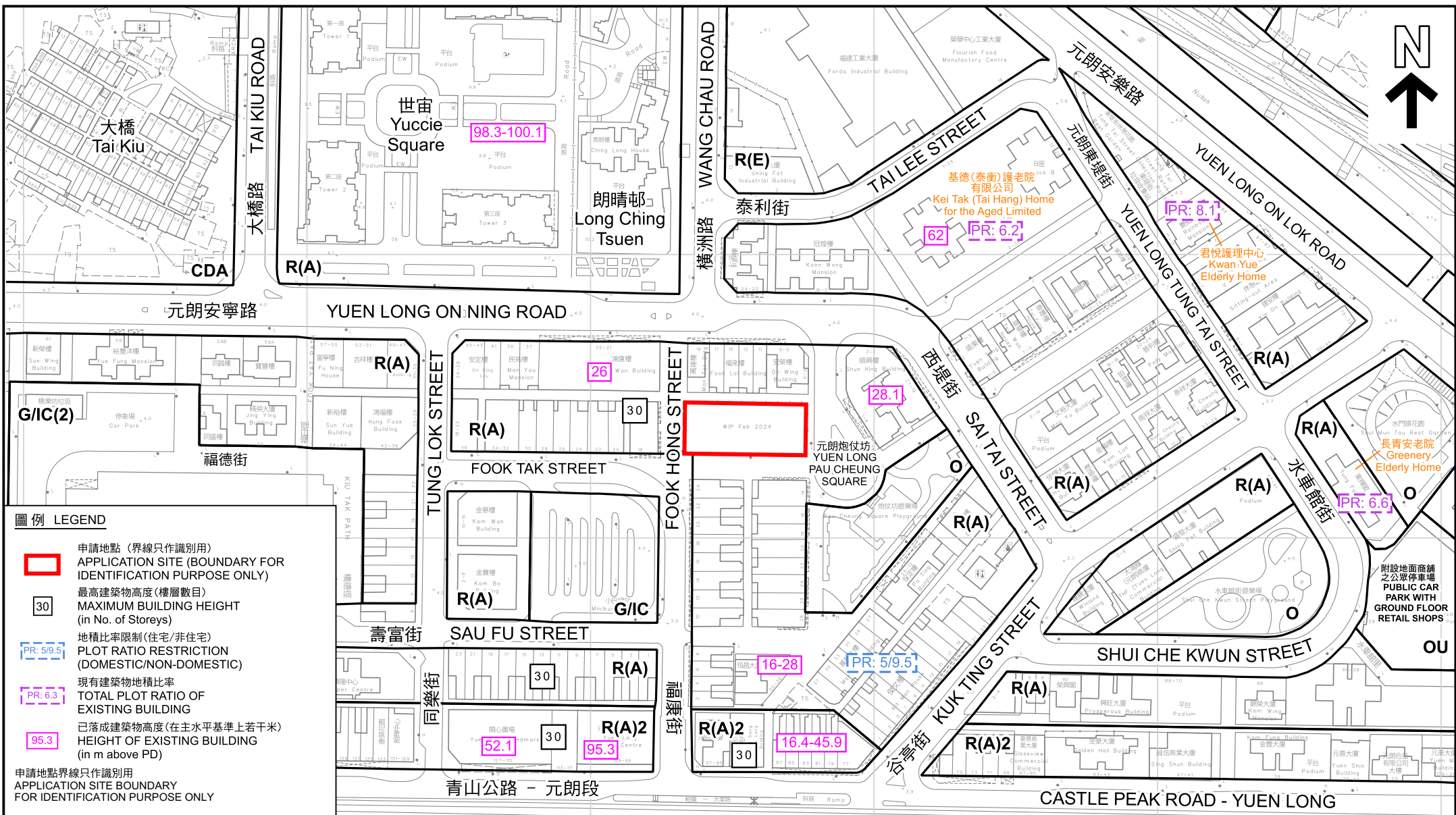
- This drawing and the contents are the copyright of I Consultants & Contracting Co. Ltd.
- No part of the drawing and the design contained herein may be reproduced without the prior written consent of a director of I Consultants & Contracting Co. Ltd.
- Do not take measurements directly from this drawing.
- Check and verify all dimensions on site.
- Read this drawing in conjunction with the specifications and all other related drawings.
- Notify the Architect immediately of any discrepancy found herein.

Rev.	Date	Description
Project Name:		
Redevelopment of Yuen Long Theatre at Lot No. 3678 in D.D. 120, Yuen Long, N.T.		
Planning Consultant: DeSPACE (International) Limited		
Architect: I Consultants & Contracting Company Limited		
Traffic Consultant: CTA Consultants Limited		
Environmental Consultant: BeeKeng Consulting Limited		
Structural and Geotechnical Engineer: S. T. Wong & Partners Limited		
Drawing Title: SCHEMATIC SECTION AND ELEVATION		
Designed by: JODY		Paper: A3
Drawn by: JODY		
Checked by: CAL		
Drawing Number: GBP013		

(摘錄自申請人於 16. 1. 2025 呈交的進一步資料)
(Extract from Applicant's Further Information Submitted on 16.1.2025)

參考編號
REFERENCE No.
Y/YL/21

繪圖 DRAWING
Z-12



- 圖例 LEGEND
- 申請地點 (界線只作識別用)
APPLICATION SITE (BOUNDARY FOR IDENTIFICATION PURPOSE ONLY)
 - 最高建築物高度 (樓層數目)
MAXIMUM BUILDING HEIGHT (in No. of Storeys)
 - 地積比率限制 (住宅/非住宅)
PLOT RATIO RESTRICTION (DOMESTIC/NON-DOMESTIC)
 - 現有建築物地積比率
TOTAL PLOT RATIO OF EXISTING BUILDING
 - 已落成建築物高度 (在主水平基準上若干米)
HEIGHT OF EXISTING BUILDING (in m above PD)
- 申請地點界線只作識別用
APPLICATION SITE BOUNDARY FOR IDENTIFICATION PURPOSE ONLY

本摘要圖於2024年12月20日擬備，所根據的資料為測量圖編號 6-NW-9D 和 6-NW-10C
EXTRACT PLAN PREPARED ON 20.12.2024
BASED ON SURVEY SHEETS No. 6-NW-9D and 6-NW-10C

平面圖 SITE PLAN

把申請地點由「住宅(甲類)」地帶改劃為「住宅(甲類)9」地帶及
修訂適用於申請地點土地用途地帶的《註釋》
元朗丈量約份第120約地段第3678號
TO REZONE THE APPLICATION SITE FROM
"RESIDENTIAL (GROUP A)" TO "RESIDENTIAL (GROUP A)9" AND
TO AMEND THE NOTES OF THE ZONE APPLICABLE TO THE SITE
LOT 3678 IN D.D. 120, YUEN LONG

SCALE 1:1 800 比例尺

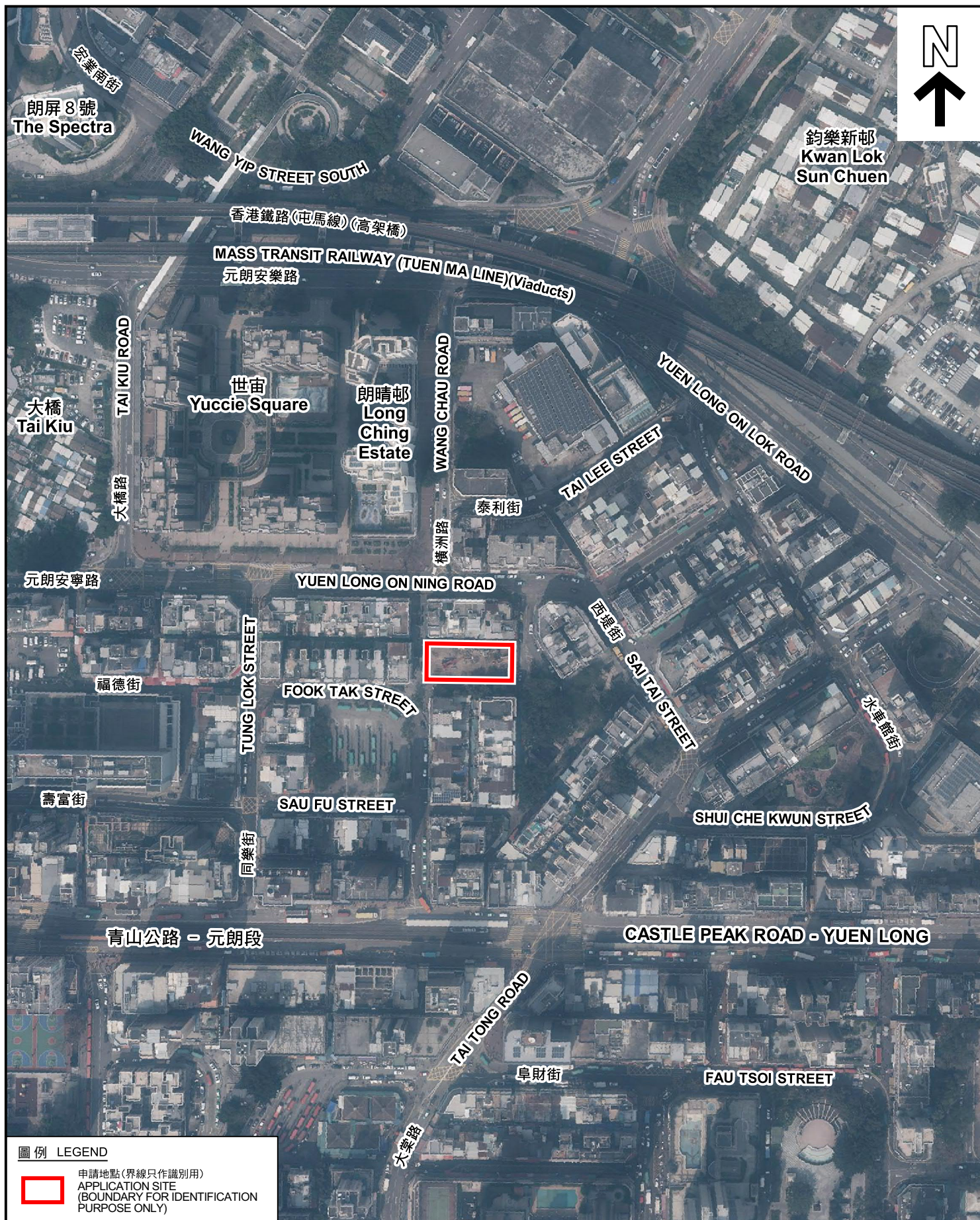
米 20 0 20 40 60 80 100 120 米
METRES

規劃署
PLANNING
DEPARTMENT



參考編號
REFERENCE No.
Y/YL/21

圖 PLAN
Z-1b



圖例 LEGEND



申請地點(界線只作識別用)
APPLICATION SITE
(BOUNDARY FOR IDENTIFICATION
PURPOSE ONLY)

航攝照片 AERIAL PHOTO

本摘要圖於2024年12月20日擬備，所根據的資料為地政總署於2023年2月24日拍得的航攝照片編號 E187776C
EXTRACT PLAN PREPARED ON 20.12.2024
BASED ON AERIAL PHOTO No.
E187776C TAKEN ON 24.2.2023
BY LANDS DEPARTMENT

把申請地點由「住宅(甲類)」地帶改劃為「住宅(甲類)9」地帶及
修訂適用於申請地點土地用途地帶的《註釋》
元朗丈量約份第120約地段第3678號
TO REZONE THE APPLICATION SITE FROM
"RESIDENTIAL (GROUP A)" TO "RESIDENTIAL (GROUP A)9" AND
TO AMEND THE NOTES OF THE ZONE APPLICABLE TO THE SITE
LOT 3678 IN D.D. 120, YUEN LONG

規劃署
PLANNING
DEPARTMENT



參考編號
REFERENCE No.
Y/YL/21

圖 PLAN
Z-3



實地照片 SITE PHOTOS

本圖於2025年3月4日擬備，所根據的資料為攝於2025年2月26日的實地照片
PLAN PREPARED ON 4.3.2025
BASED ON SITE PHOTOS
TAKEN ON 26.2.2025

把申請地點由「住宅(甲類)」地帶改劃為「住宅(甲類)9」地帶及
修訂適用於申請地點土地用途地帶的《註釋》
元朗丈量約份第120約地段第3678號
TO REZONE THE APPLICATION SITE FROM
"RESIDENTIAL (GROUP A)" TO "RESIDENTIAL (GROUP A)9" AND
TO AMEND THE NOTES OF THE ZONE APPLICABLE TO THE SITE
LOT 3678 IN D.D. 120, YUEN LONG

規劃署
PLANNING
DEPARTMENT



參考編號
REFERENCE No.
Y/YL/21

圖 PLAN
Z-4