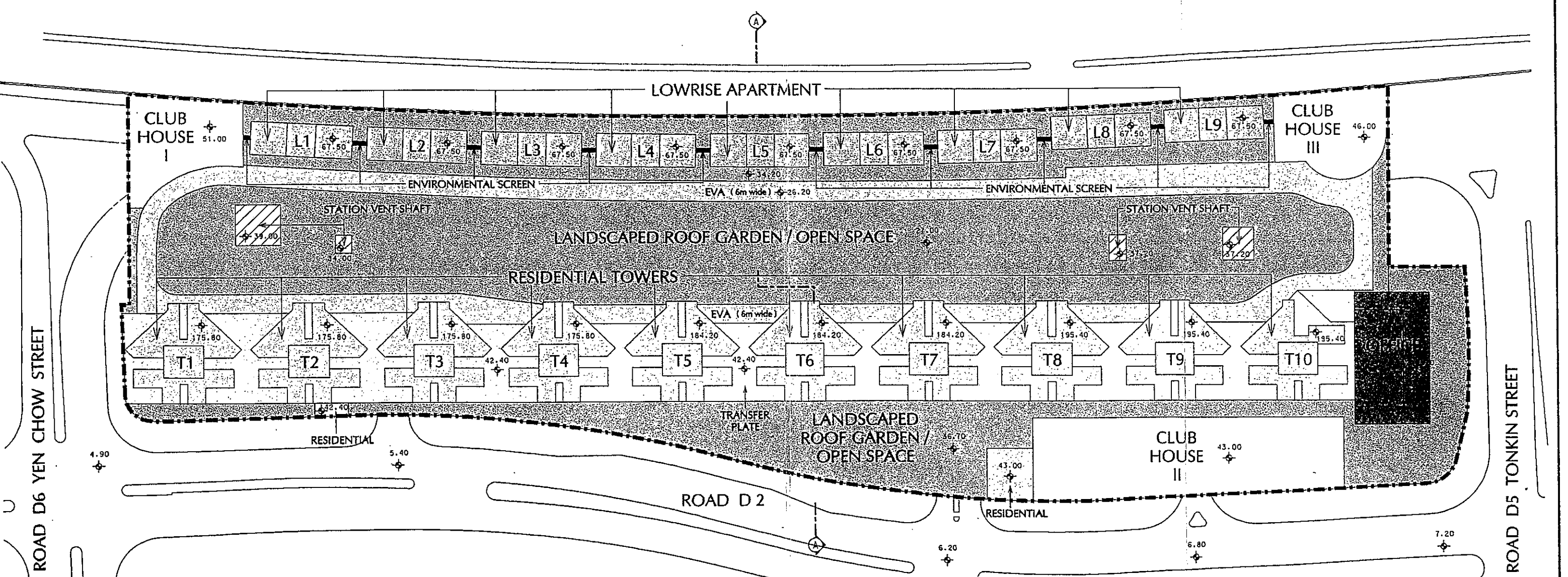


THE MLP WILL BE SUBJECT TO CHANGE TO INCORPORATE THE REQUIREMENTS OF THE APPROVAL CONDITIONS

I hereby certify, as required under S.4A(3) of the Town Planning Ordinance, that this Master Layout Plan was approved by the Town Planning Board on 17.12.1999
 茲證明城市規劃委員會已根據城市規劃條例第 4A(3)條的規定而於一九九九年十二月十七日批准本總綱發展藍圖

Signed *Gordon K.C. Siu* 蕭炯柱
 Chairman, Town Planning Board 城市規劃委員會主席簽署



- RESIDENTIAL TOWER T1 - T4 : 46 RESIDENTIAL FLOORS + 1 REFUGE FLOOR + LOBBY FLOOR ABOVE PODIUM (P5)
- T5 - T7 : 49 RESIDENTIAL FLOORS + 1 REFUGE FLOOR + LOBBY FLOOR ABOVE PODIUM (P5)
- T8 - T10 : 52 RESIDENTIAL FLOORS + 2 REFUGE FLOOR + LOBBY FLOOR ABOVE PODIUM (P5)
- OFFICE TOWER : 42 OFFICE FLOORS + 1 REFUGE FLOOR + 1 MECHANICAL FLOOR + LOBBY FLOOR ABOVE PODIUM (P5)
- LOWRISE APARTMENT L1 - L9 : 10 RESIDENTIAL FLOORS

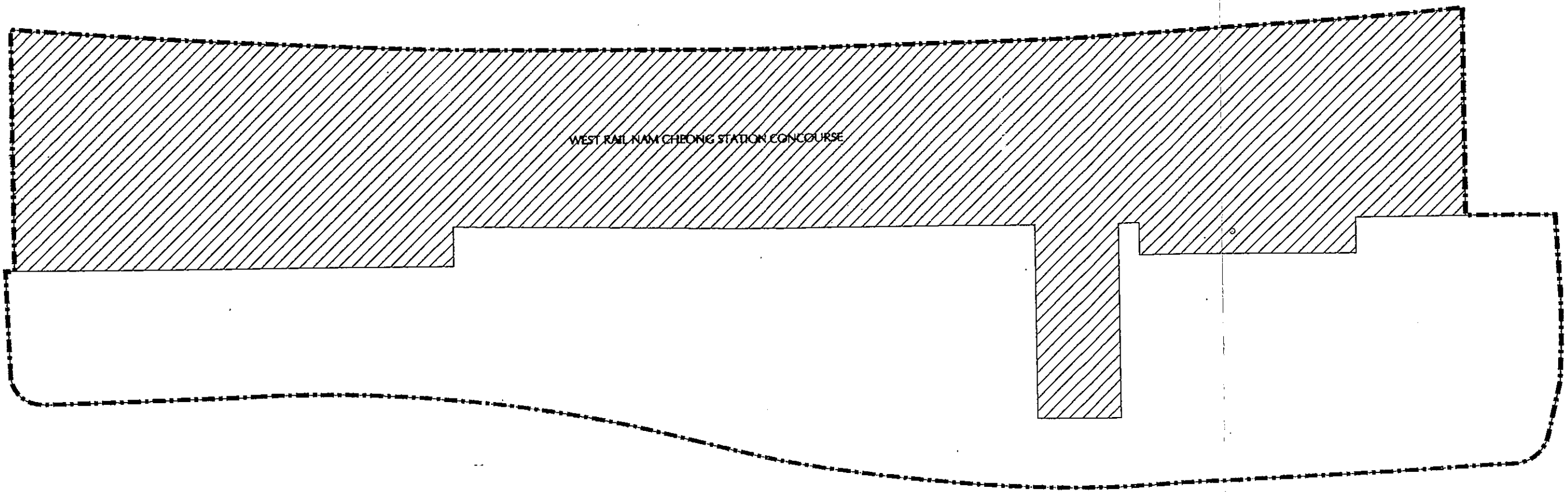
--- SITE BOUNDARY

STATION AND ASSOCIATED FACILITIES (DO NOT FORM PART OF SECTION 16 APPLICATION)

TITLE
PROPOSED MASTER LAYOUT PLAN

NAM CHEONG
 station

SCALE	1 : 1200
FIGURE NO.	4.1
DRAWING NO.	PDS/400/S16/D-01
REVISION	



WEST RAIL NAM CHEONG STATION CONCOURSE

----- SITE BOUNDARY

 STATION AND ASSOCIATED FACILITIES (DO NOT FORM PART OF SECTION 16 APPLICATION)

S-13 C:\363\5-16\ BASE3.DGN

TLE

BASEMENT (STATION CONCOURSE)

NAM CHEONG
station

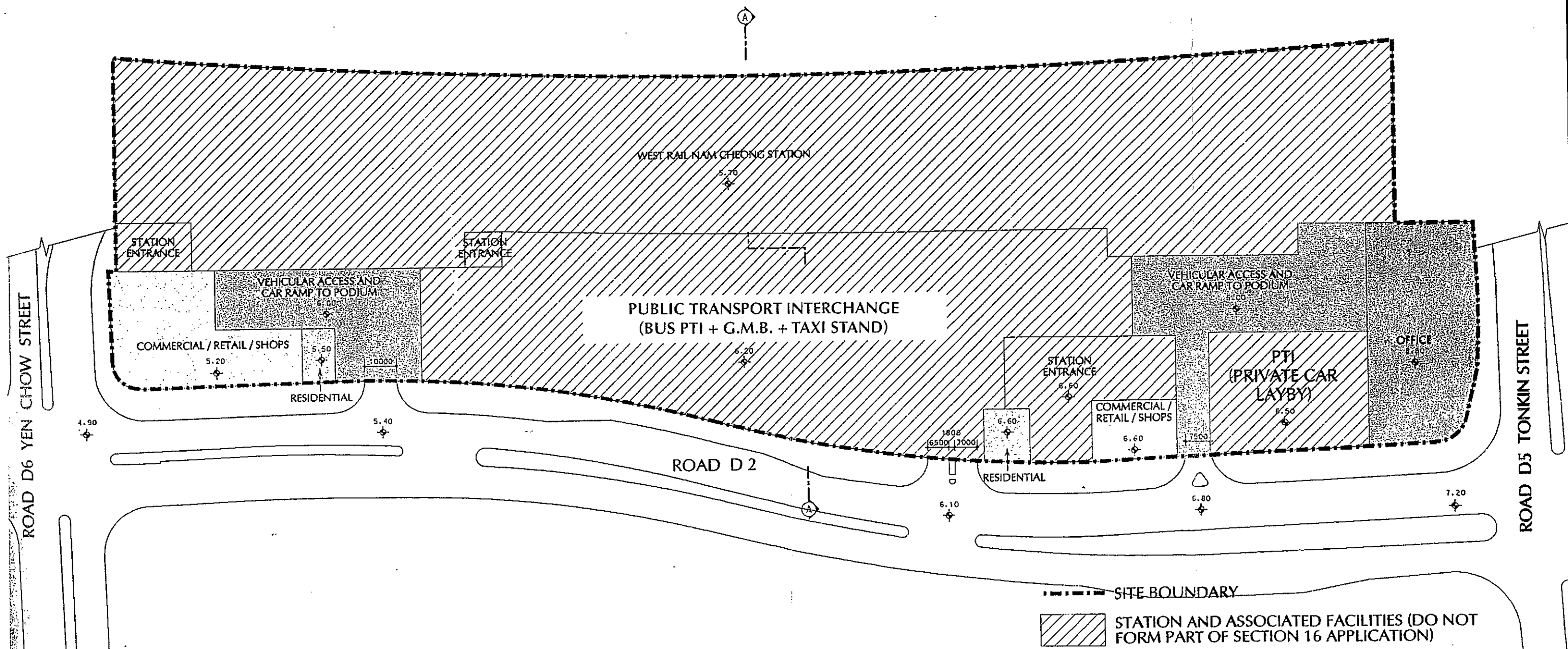
SCALE 1 : 1200

FIGURE NO: 4.2


DRAWING NO. PDS/400/S16/D-10

REVISION





--- SITE BOUNDARY

 STATION AND ASSOCIATED FACILITIES (DO NOT FORM PART OF SECTION 16 APPLICATION)

S-13 CN363VS-16GRD-03.DGN

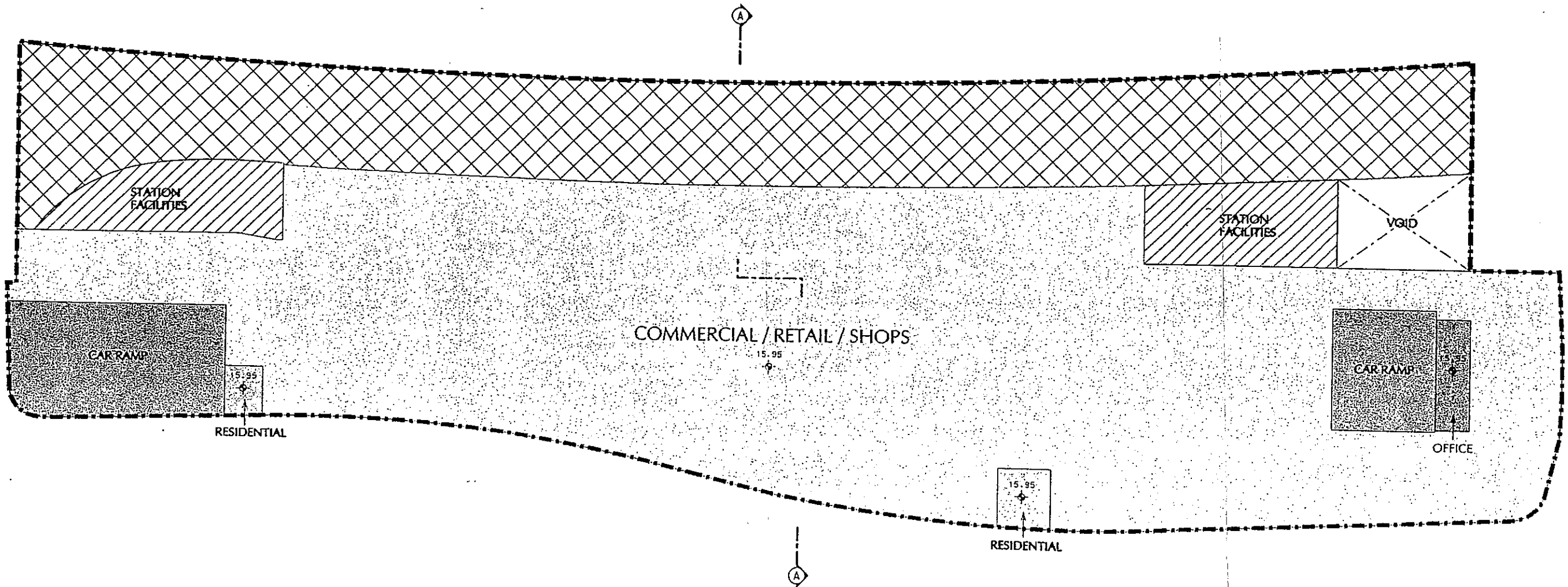
GROUND FLOOR PLAN

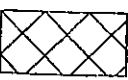
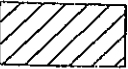
NAM CHEONG.
station

SCALE 1 : 1200
FIGURE NO. 4.3
DRAWING NO. PDS/400/S16/D-02
REVISION



KCR



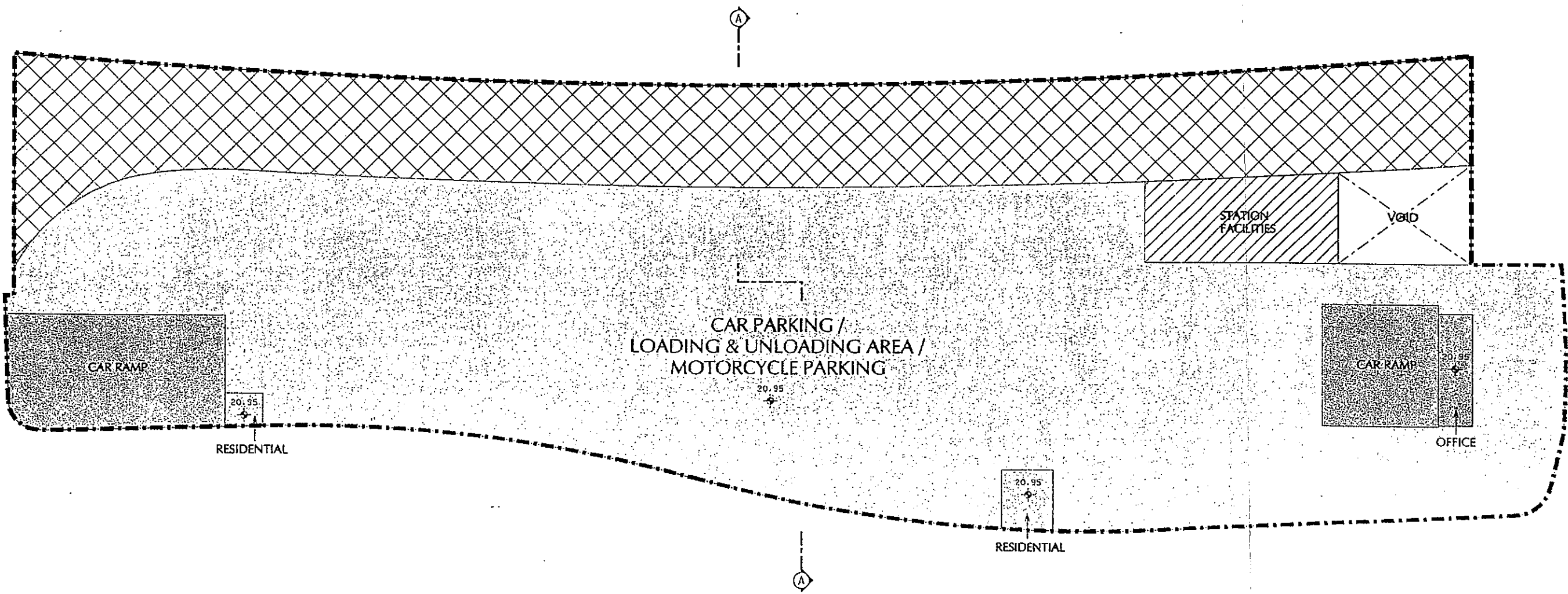
- SITE BOUNDARY
-  ROAD P1-SOUTHBOUND AND ROAD P1/D6 SLIPROAD
(DO NOT FORM PART OF SECTION 16 APPLICATION)
-  STATION AND ASSOCIATED FACILITIES (DO NOT
FORM PART OF SECTION 16 APPLICATION)

FIRST FLOOR PLAN (P1)

NAM CHEONG

SCALE 1 : 1200
FIGURE NO. 4.4
DRAWING NO. PDS/400/S16/D-03





- SITE BOUNDARY
- ROAD P1-SOUTHBOUND AND ROAD P1/D6 SLIPROAD (DO NOT FORM PART OF SECTION 16 APPLICATION)
- STATION AND ASSOCIATED FACILITIES (DO NOT FORM PART OF SECTION 16 APPLICATION)

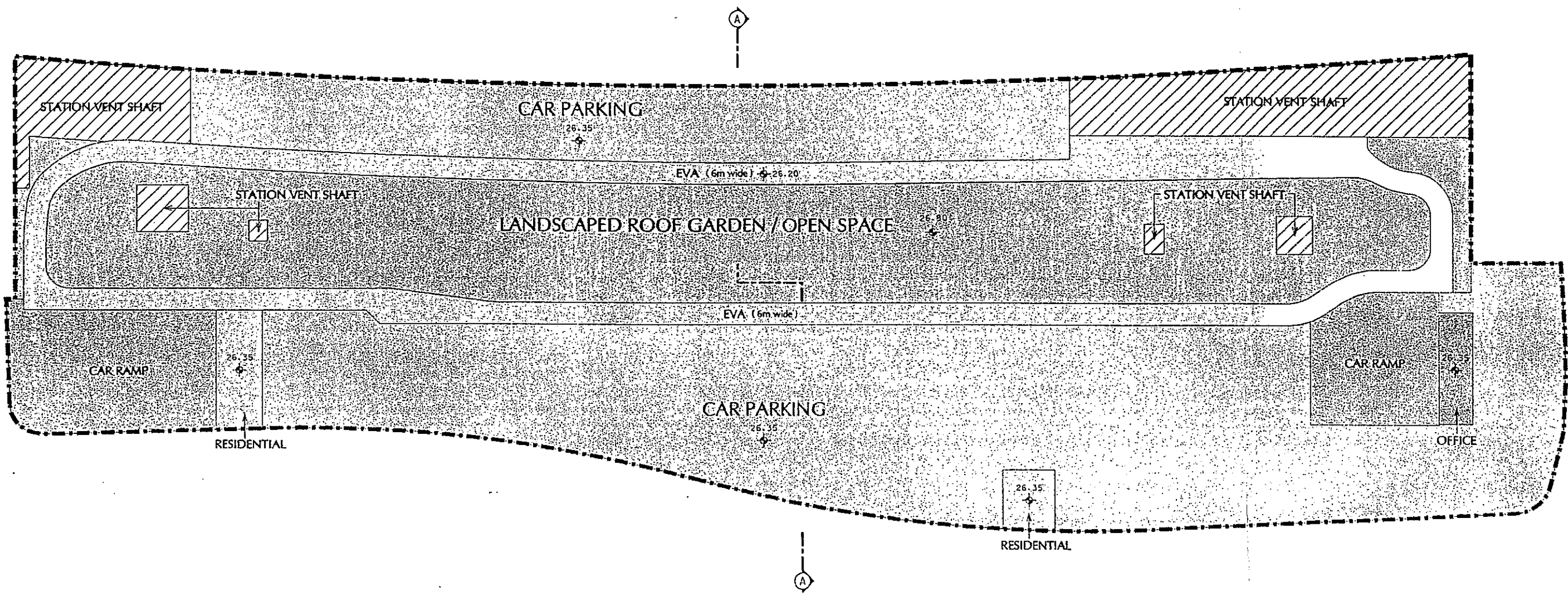
S-13 C:\1363\S-16\ 2ND-03.DGN

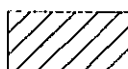
SECOND FLOOR PLAN (P2)

NAM CHEONG
station

SCALE 1 : 1200
FIGURE NO. 4.5
DRAWING NO. PDS/400/S16/D-04
REVISION






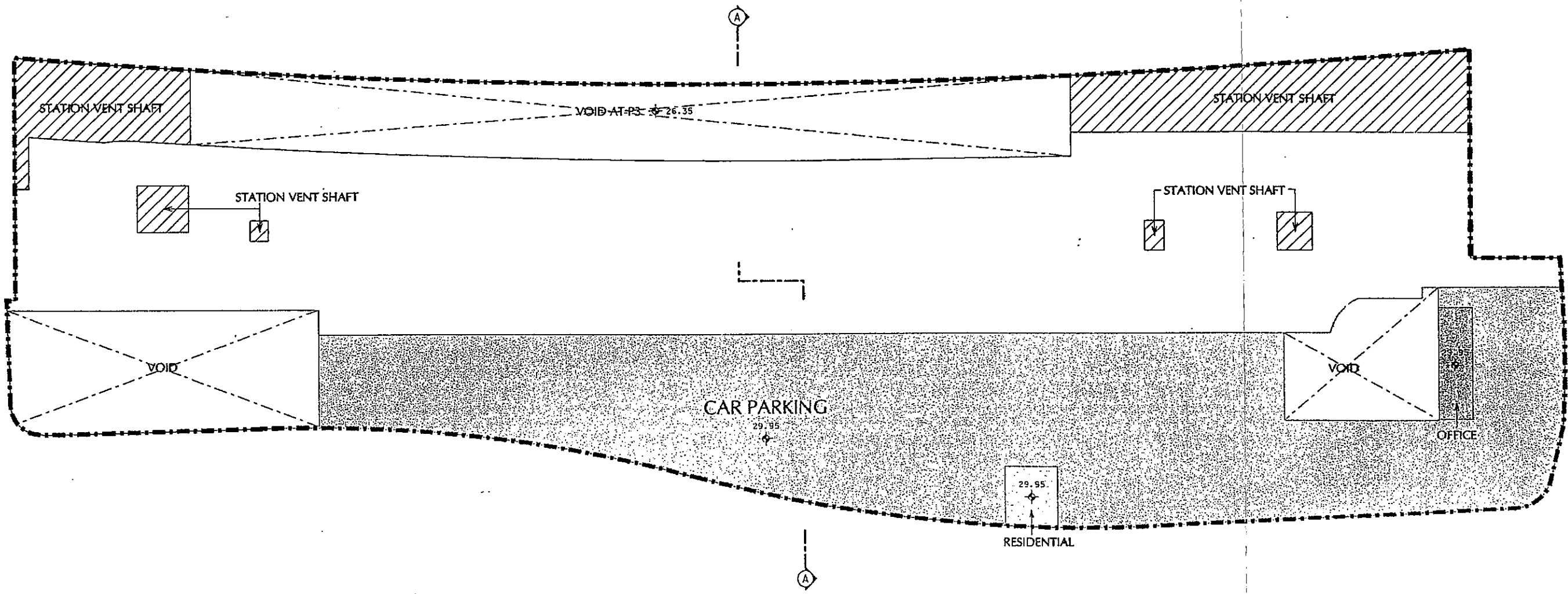
- - - - - SITE BOUNDARY
 STATION AND ASSOCIATED FACILITIES (DO NOT FORM PART OF SECTION 16 APPLICATION)

S-13 C:\J163\5-16\3RD-03.DGN

THIRD FLOOR PLAN (P3)

NAM CHEONG station	SCALE 1 : 1200	
	FIGURE NO. 4.6	
	DRAWING NO. PDS/400/S16/D-05	
	REVISION	





- SITE BOUNDARY
- STATION AND ASSOCIATED FACILITIES (DO NOT FORM PART OF SECTION 16 APPLICATION)

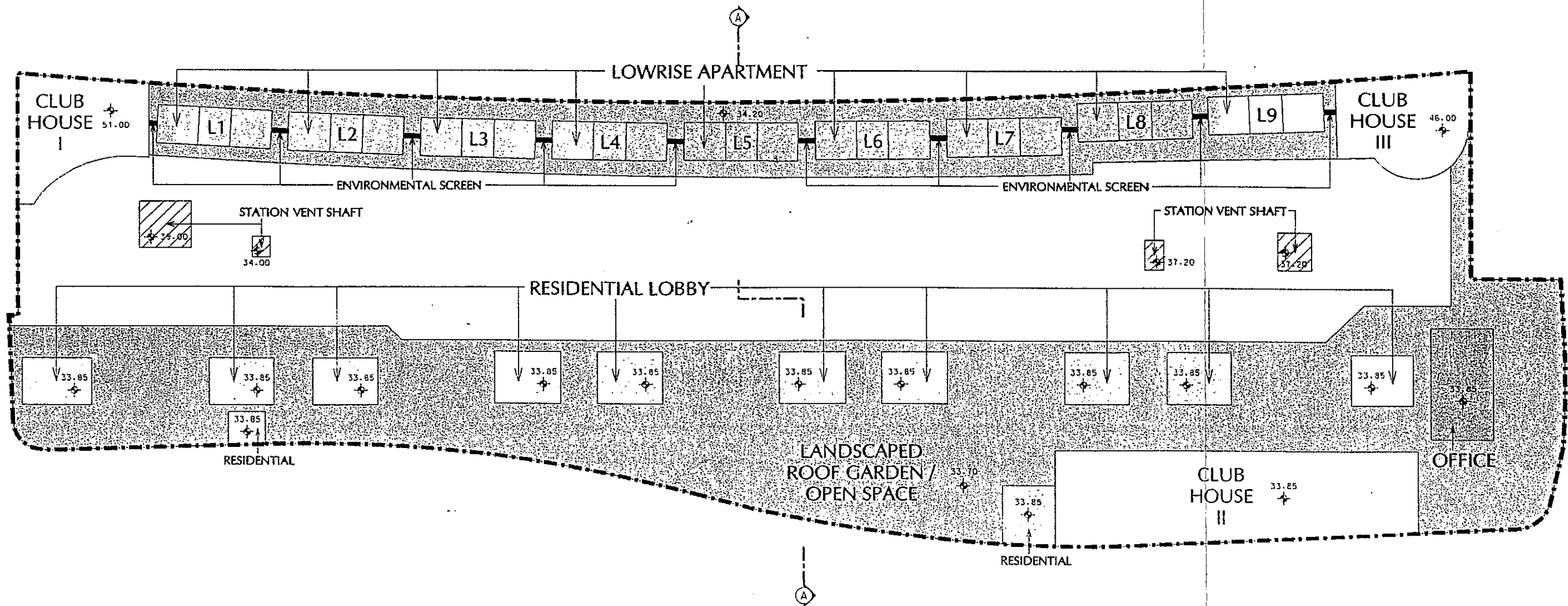
S-13 C:\J363\5-16\4TH-03.DGN

FOURTH FLOOR PLAN (P4)

NAM CHEONG
station

SCALE 1 : 1200
FIGURE NO. 4.7
DRAWING NO. PDS/400/S16/D-06
REVISION





- - - - - SITE BOUNDARY
 STATION AND ASSOCIATED FACILITIES (DO NOT FORM PART OF SECTION 16 APPLICATION)

TITLE
FIFTH FLOOR PLAN (P5)

NAM CHEONG
 station

SCALE 1 : 1200
FIGURE NO. 4.8
DRAWING NO. PDS/400/S16/D-07
REVISION



KCR
 九廣鐵路